

Golf Course Marketplace

To reserve space in this section, call Simone Marsteller, 813-576-7077

July

- 7 — Focus on Wetland Plants seminar in Seattle. Contact 206-685-8033.
- 15 — Annual Nursery Field Day in Virginia Beach, Va. Contact 804-363-3900.
- 23-25 — American Sod Producers Association Summer Convention & Field Days in Chicago. Contact 708-705-8347.
- 23-27 — American Association of Nurserymen Annual Convention and Nursery Industry Trade Show in Columbus, Ohio.
- 26-28 — International Lawn, Garden and Power Equipment Expo '92 in Louisville, Ky. Contact 800-558-8767.
- 26-28 — International Lawn, Garden and Power Equipment Expo in Louisville, Ky. Contact 800-558-8767.
- 30 — Turfgrass Management for Athletic Fields, Golf Courses and Landscapes seminar in Stillwater, N.Y. Contact 518-783-1229.

August

- 2-4 — Georgia Golf Course Superintendents Association summer conference at Pine Mountain. Contact 404-769-4076.
- 3 — West Texas GCSA meeting in Canyon. Contact Pam Deeds at 806-354-8447.
- 4-6 — Turfgrass Field Diagnostic Course for Golf Course Managers at Cornell University in Ithaca, N.Y. Contact Joann Gruttadaurio at 607-255-1792.
- 6 — New Jersey Turfgrass Research Field Day in North Brunswick.
- 9-12 — Cornell Compost Management Symposium for Professionals in Ithaca, N.Y. Contact Ken Cobb at 607-255-1185.
- 9-12 — 47th Annual Soil & Water Conservation Society Meeting in Baltimore. Contact 515-289-2331.
- 17-19 — Golf East Expo in Orlando, Fla. Contact 800-443-8318.
- 18 — Golf Course Design/Construction and Golf Day in Delhi, N.Y. Contact 800-873-TURF.
- 19 — Rhode Island Annual Turfgrass Field Day in Kingston. Contact Dr. Noel Jackson at 401-792-2932.

- 19-21 — Field Diagnosis: Insects and Diseases of Trees and Shrubs seminar in Ithaca, N.Y. Contact 518-783-1322.
- 20 — Michigan State University Turfgrass Field Day in East Lansing. Contact Frank Rossi at 517-353-0860.
- 22 — PGA of America's National Golf Day. Contact Julius Mason at 407-624-8444.
- 26 — Landscaping for Wildlife seminar in Cook College in New Brunswick, N.J. Contact 908-932-9271.
- 28-30 — Golfing '92 Indonesia in Jakarta. Contact 62 21 420-4300.

September

- 10-13 — Asian Golf Course '92 — Asian Golf Course Conference & Exhibition in Kuala Lumpur, Malaysia. Contact in Singapore 65 4473680.
- 20-23 — Florida Turfgrass Association annual conference and trade show in Jacksonville. Contact 800-882-6712.
- 23 — Oklahoma State University Turfgrass Field Day in Stillwater, Okla. Contact Dennis Martin at 405-744-5419.

October

- 3-6 — Golf '92 International Golf Trade Fair in Dusseldorf, Germany. Contact 312-781-5180.
- 4-6 — Marketing to Golf Facilities Seminar

Continued on page 52



EXCEL

BRIDGE MANUFACTURING CO.

Golf Course Bridges are our specialty! We fabricate easy-to-install, pre-engineered spans and deliver them anywhere in the U.S.A. Call today for a free consultation.

800/548-0054

12001 SHOEMAKER AVENUE, SANTA FE SPRINGS, CALIFORNIA
213/944-0701 FAX 213/944-4025

CIRCLE #168

TRIMS

THE WORLD LEADER IN
GROUNDS MANAGEMENT SOFTWARE

System Features:

- PERSONNEL & LABOR RECORDS • CHEMICAL APPLICATION LOGS • EQUIPMENT SERVICE RECORDS
- SPARE PARTS INVENTORY
- BUDGET & EXPENSES • AND MORE

Call or write today **LABB SYSTEMS/SOFTWARE**
for your FREE Demo Disk **6018 EAST OSBORN ROAD**
and Literature to see what **SCOTTSDALE, AZ 85251**
TRIMS can do for you! **(800) 733-9710**

CIRCLE #169

Keep Your Divot Seed Mixture Where It Is Used ...



... in Divot Seed & Soil tee buckets next to the tee markers. Available in Cedar or Redwood slats and with companion Trash™ debris buckets.



Ask Your Golf Course Distributor for
INNOVATIVE MAINTENANCE PRODUCTS

From

Master of the Links

P.O. Box 283, Lockport, IL 60441-0283
(815) 723-4444 • Fax (815) 723-4485



CIRCLE #170

GOLF COURSE CONSTRUCTION

NEW GOLF COURSES
GOLF COURSE RENOVATIONS



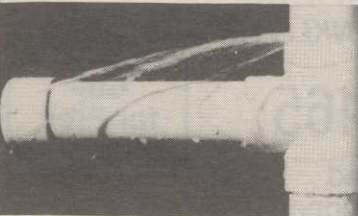
815 • 923 • 1868

Ask for Bob or Mark

18250 Beck Road, Marengo, IL 60152
Fax: 815•923•3662

CIRCLE #171

SYNTHO-GLASS PIPE REPAIR KIT



- * Stops Leaks!
- * Water Activated!
- * Sets in 30 Minutes!
- * No Mixing & Measuring!
- * Easy to Apply!
- * Use Directly from Package!

For more information call:
(800) 328-0090

NEPTUNE RESEARCH, INC.
FAX: 1-407-683-8366

CIRCLE #172

Timber Bridges

by Western Wood Structures, Inc.
Call Chuck Schmokel - 503/692-6900
1-800-482-4004

CIRCLE #173

Drag That Slimy Stuff Out!

Your orders to the grounds crew can get a different reaction. We developed an **ALGAE RAKE** to remove algae from your lake.

Ask Your Golf Course Distributor for

INNOVATIVE MAINTENANCE PRODUCTS

From

Master of the Links

P.O. Box 283, Lockport, IL 60441-0283
(815) 723-4444 • Fax (815) 723-4485



CIRCLE #175



PAVELEC BROTHERS GOLF COURSE CONSTRUCTION CO., INC.

- ✓ New Construction
- ✓ Renovation
- ✓ Field Drainage Systems

TONY PAVELEC
(201) 667-1643
EMIL PAVELEC
(201) 939-6182

98 Evergreen Ave.
Nutley, NJ 07110

CIRCLE #174

Continued from page 51

in Oak Brook, Ill. Contact Rebecca Quinlan, Golf Course News at 207-846-0600.

5-7 — International Golf & Resort Development Show in Acapulco, Mexico. Contact 800-285-2332.

15-19 — Congress for Recreation and Parks in Cincinnati. Contact Pat Phillips at 703-820-4940.

21-23 — National Golf Foundation Golf Summit in Orlando, Fla. Contact NGF at 407-744-6006.

November

1-3 — Public Golf '92 for Public Golf Facility Managers in Oak Brook, Ill. Contact Rebecca Quinlan, Golf Course News at 207-846-0600.

1-3 — Georgia Golf Course Superintendents Association annual meeting on St. Simons Island. Contact 404-769-4076.

1-4 — International Irrigation Exposition and Technical Conference in New Orleans. Contact 703-524-1200.

4-5 — Annual Oklahoma Turfgrass Conference in Tulsa. Contact Dennis Martin at 405-744-5419.

10-13 — New York State Turfgrass Association annual Turf and Grounds Exposition in Rochester. Contact 800-873-TURF.

12-14 — Golf Course Europe '92 and International Golf Development and Investment Conference '92 in Monte Carlo. Contact Charles Duff at 415-453-1184.

15-19 — Professional Grounds Management Society Annual Conference in Indianapolis. Contact 401-667-1833.

29-Dec. 2 — Canadian Turf Grass Convention and Trade Show in Halifax, Nova Scotia. Contact Chuck Desveaux at 416-602-8873.

December

2-3 — Pacific Coast Turf & Landscape Conference & Trade Show in Seattle. Contact Scott White at 800-275-9198.

2-4 — Rocky Mountain Regional Turfgrass Association Annual Conference and Show in Denver. Contact 303-688-3440.

15-17 — Missouri Lawn & Turf Conference & Trade Show in Columbia. Contact 314-882-1953.

1993

January

11-15 — Cornell Cooperative Extension Turfgrass Short Course at Cornell University, Ithaca, N.Y. Contact Joann Gruttadauro at 607-255-1792.

14-16 — Mid-America Horticultural Trade Show in Chicago. Contact Donn Sanford at 708-526-2010.

March

15-21 — Pacific Rim Golf Course Conference and Show in Singapore. Contact 913-841-2240.

26-28 — West Michigan Golf Show in Grand Rapids. Contact 616-247-1931.

* — For more information or to register, contact Betsy Evans, education coordinator, Golf Course Superintendents Association of America, at 800-472-7878 or 913-841-2240. The seminars are dependent upon the availability of the instructors, and are therefore subject to change. One-day seminars cost \$100 for GCSAA members and \$120 for non-members; two-day seminars cost \$180 for members and \$210 for non-members.

Golf Course Marketplace

To reserve space in this section, call Simone Marsteller, 813-576-7077



Available in 15", 18" and 24" bars.

ACCUGAGE™

Accu-gage™ is a precision measuring instrument for making highly accurate height-of-cut adjustments on greensmowers or other precision mowers.

GROOMER-GAGE™

Groomer-gage™ is a precision measuring instrument for accurately setting the desired grooming depth of groomer or verticutter units.

For more information on this and other precision tools call Toll Free: 1-800-253-2112 or 313-429-9571 FAX: 313-429-3985

PRECISION TOOL PRODUCTS CO. 7836 Bethel Church Rd. • Saline, MI 48176

CIRCLE #176

RANGE BOSS™



The LITE Range Picker

SGD P.O. BOX 8410

AKRON, OHIO 44320



Now SGD Company is pleased to offer the Range Boss™ line of LITE Pickers. From the husky tubular steel frames to the reinforced picker discs. The Range Boss™ is tough yet lite weight. Whether you need an EZ hand push single gang for hard to reach and light traffic areas, the three gang for medium traffic ranges, the five gang picker or seven gang picker for high customer count ranges. Choose the correct size then order Range Boss. Write or call Toll Free for your personal catalogue today.

TOLL FREE: 800-321-3411 (216)239-2828 FAX: (216)239-2668

CIRCLE #177

"NOVATEE"

The **NOVATEE** is a combination of specially manufactured **synthetic grass** of commercial quality. Its patented design, featuring top dressing imbedded between the fibers, allows golfers to tee up just like on natural grass.



The **NOVATEE** is the state-of-the-art synthetic tee surface for all courses & driving ranges.

Dealer inquiries requested.

PO/CP 533 CSL
Montreal, P.Q., Can. H4V 2Z1
514/486-1696
Fax 514/486-9927

SyntenniCo Inc.

CIRCLE #178



MOTOROLA Radium™ PORTABLE RADIOS

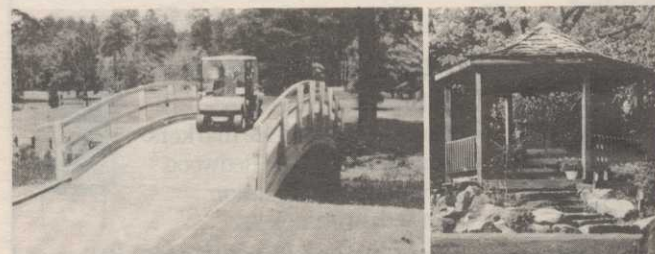
- Free 2 week trial
- Radios start at* \$99
- Up to a 3 year warranty

CALL FOR MORE INFORMATION

PAGE.COM
1-800-527-1670

*OTHER BRANDS AVAILABLE

CIRCLE #180



Glued-Laminated WOOD STRUCTURES

Order Direct From The Leading Manufacturer in U.S.
• Complete Prefabricated Packages • Ready for Fast Erection
• Direct Distribution Throughout the U.S. • Custom Design & Engineering
UNIT STRUCTURES, INC. CALL 1-800-777-UNIT
P.O. BOX A MORRISVILLE, N.C. 27560

CIRCLE #179

ENGRAVED YARDAGE LABELS

FOR SPRINKLER HEADS



Call for Free Sample Kit

- Bright colors
- Fasteners included
- Orders quickly shipped UPS

1-800-284-YARD

THE YARD EDGE GOLF CO.

P.O. Box 13159

Wichita, KS 67213

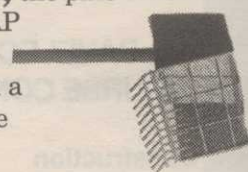
CIRCLE #181

Score a **HOLE IN ONE** with a **Classified Display Ad** like this one in **GOLF COURSE MARKETPLACE**

Call Simone Lewis today at **(813) 576-7077** for details...

CIRCLE #182

Get Out The Nuts, the pine cones & the rocks with the **SAND TRAP RENOVATOR**. Made of a sturdy frame covered with a mesh cage, it cleans up the act.



Ask Your Golf Course Distributor for **INNOVATIVE MAINTENANCE PRODUCTS**

From

Master of the Links

P.O. Box 283, Lockport, IL 60441-0283
(815) 723-4444 • Fax (815) 723-4485



CIRCLE #183