

Golf Course Marketplace

To reserve space in this section, call Simone Marsteller, 813-576-7077

ADVERTISING INFO.

1992 Rates 2X 6X 12X
 Per col. inch: \$55.00 \$50.00 \$40.00
 Add-on per 1/4": \$13.75 \$12.50 \$10.00
 Logo incl. in ad: \$30.00 \$30.00 \$30.00

- Minimum 2-time insertion.
- Prepayment is required.

Send prepayment and ad copy to:
Golf Course News
 7901 4th St. N., Ste. 311
 St. Petersburg, FL 33702
 813-576-7077 • Fax 813-579-9788

EMPLOYMENT

WANTED

Golf Course Construction company wants experienced supervisors, shapers & operators. Fax resume to:

404-992-9677

POSITION AVAILABLE

Experienced Green Industry Sales Representative sought for Mid-Atlantic region. Must be experienced in Golf Course Sales with a strong agronomic background. Qualified applicants please respond with resume to **Box M-792, c/o Golf Course News, 7901 4th St. N., #311, St. Petersburg, FL 33702.**

CONSTRUCTION SUPERVISORS & SHAPERS

International golf course architect seeking internationally - experienced construction personnel. Send resume to **Golfplan, P.O. Box 1823, Santa Rosa, CA, 95402-1823, Attn: Mr. Rick Kroeger.**

POSITIONS WANTED

POSITION WANTED

College senior graduating in December with a B.S. in Ornamental Horticulture & Landscape Design seeks entry-level position with a golf course design/construction firm.

(615) 573-2915.

BUSINESS OPPORTUNITIES

Seeking competent & knowledgeable associate. On-site worker. Golf course management. 18-hole PGA course. '92 est. min. 28,000 rounds. 500 acre South Carolina mountain foothills development. Initial investment negotiable. Will consider selling. Complete resume required. **P.O. Box 663, White Rock, SC, 29177.**

REQUEST FOR PROPOSALS

REQUEST FOR PROPOSALS NO. Y2-608: GOLF COURSE MARKET DEMAND & FINANCIAL FEASIBILITY STUDIES.

The Board of County Commissioners, Orange County, FL, invites interested firms or individuals to submit proposals no later than 2:00 p.m., July 28, 1992, to provide golf course market demand & financial feasibility studies for the Orange County Parks & Recreation Dept. Proposals will be accepted at, & copies of the Request for Proposals may be obtained from, the Orange County Purchasing & Contracts Dept., 201 S. Rosalind Ave., 3rd Floor, Orlando, FL 32801, (407) 836-5635. A pre-proposal conference will be held at 9:00 a.m., July 13, 1992, at the Orange County Purchasing & Contracts Dept.

REAL ESTATE

GOLF COURSE FOR SALE

Pine Valley Country Club, Elizabethtown, KY. 18-hole championship golf course, swimming pools, tennis courts, village hall. Excellent location. Price \$3.2M. Incl. 34 developed lots & 50+ undeveloped acres. Contact **L.A. Medley, (502) 737-8300.**

TEXAS GOLF COURSES

9 & 18 holes — Statewide.
 Some with extra land, dev. lots.
 Descriptive list available.

TEXAS GOLF PROPERTIES

1603 Lightsey — Austin, TX 78704
 512/442-7105 • Fax 512/442-1812

NEW YORK

Ellicottville: 240 acres only minutes from the number one ski area in New York, 2 hours south of Toronto. Excellent site for golf course & Residential Resort Development. \$495,000. Call **Laurie Dux, Century 21 Almeida Real Estate, 1-800-451-5559**

GOLF COURSES WANTED

Southwest Golf is interested in purchasing or leasing golf courses.

Call **Dick Campbell at (505) 898-0960**

GREEN FAIRWAYS FOR SALE THROUGHOUT U.S.

Specialized golf course brokers
 3 offices nationwide

PRESTWICK GOLF PROPERTIES

(414) 789-9753
 (803) 785-9155
 (708) 289-5633

GOLF COURSES FOR SALE

Richard M. Farrell, Lic. R. E. Broker
Golf Properties Real Estate, Inc.
 710 Grand Central Street
 Clearwater, FL 34616
 (813) 447-4653

FOR SALE

STEEL BUILDINGS

Save up to 50% on Arch Style Buildings.
Factory Clearance. 25x30; 40x40; 50x100 & others. Factory Direct.

UNIVERSAL STEEL
 1-800-548-6871

POND LINERS

Buy direct from fabricator 20 & 30 mil. P.V.C. Made to order. Under 20 cents per sq. ft. Installation or supervision available. Call...

COLORADO LINING COMPANY
 (303) 841-2022

TULIP COLORBLENDS — NATURE'S FIREWORKS

Tulips for Fall planting. New ideas and Competitive Prices. GCSAA members have pre-approved credit. Customer Service & Follow-up Assistance, call Toll Free **1-800-877-8637.**



SCHIPPER & CO.

PO Box 7584, Greenwich, CT, 06836-7584

"Our Roots Are Bulbs"

QUALITY TURF GRASSES

Sod or sprigs shipped anywhere, desoled if necessary. Meyer Z-52, Tifdwarf, Tifway, Tifway II, Tifgreen II & Fescue. Planting avail. for golf courses, athletic fields, etc.

QUAIL VALLEY FARM, INC.

(800) 666-0007
 FAX (501) 221-1243

PENNSYLVANIA GROWN SOD

Soil-Free Pennncross Bentgrass (Very adaptable to any medium)
 Bluegrass Blend, Bluegrass/Ryegrass blend shipped via our trucks, forklift unloaded.

VICNOR FARMS, INC.

Connoquenessing, PA 16027
 (800) 842-0461

DEADLINE TO PLACE A CLASSIFIED AD IN THE SEPTEMBER ISSUE IS MONDAY, AUGUST 17TH

BUSINESS SERVICES



Mid Tenn Turf, Inc.

Golf course, athletic field renovations & new construction. Sodding, sprigging, row planting, fairway renovations. Complete turn key operations. Products include: Vamont Bermuda; Tif & Tif II Bermudas; Meyer Z-52 Zoysia; Blended Fescue.

Mid Tenn Turf, Inc.
 Rt. 3, Box 3199

Manchester, TN 37355
 Phone (615) 728-0583

GOLF COURSE ACCESSORIES

CUSTOMIZED YARDAGE MARKERS

- ✓ Highest quality bronze markers for tees, 100, 150 & 200; & cart paths
 - ✓ Sprinkler head yardage tags to fit all automatic systems
 - ✓ Yardage books — 1 & 4 color
 - ✓ Laser measure per USGA standards
- For more information, references or samples, contact:

From Tee to Green, Inc.

1707 Brandywine Trail
 Ft. Wayne, IN 46845
 (800) 932-5223

WHY HASSLE WITH SEVERAL VENDORS?

- Scorecards
- Sprinkler Tagging
- Yardage Books
- Fairway Markers
- Laser Measuring
- Tee Signs (wood or granite)

Call **FORE BETTER GOLF, INC.**
 1-800-468-8672

SAVE ON PERSONALIZED FLAGS

Buy factory direct & save 40% or more on personalized flags. Flagpoles, tee markers, etc. also available. Fast personalized service guaranteed. Call toll free.



FOUR SEASONS GOLF COMPANY

P.O. Box 78011
 Greensboro, NC 27427
 1-800-476-7005

LASER MEASURING

LASER MEASURING and SPRINKLER YARDAGE MARKERS

We do it all. Laser measure & installation (same day) of **custom metal yardage markers** for all types of sprinkler heads. Warranty included. Also tee to green measurements, granite fairway markers. Sprinkler yardage markers may be purchased separately. Contact Nick for samples & references. **Fairway Designs of Florida, 800-36-TAGIT.**

Jones Trail immortalized for tourists

Billed as the largest golf construction project in the history of the game, the \$100 million seven-course Robert Trent Jones-designed state golf trail is the showpiece of a free 45-page golf guide available from the Alabama Bureau of Tourism and Travel.

Titled "Golf/Alabama," the slick publication highlights the yet-to-be played trail designed by renowned golf architect Jones. It also includes a directory of every other public course in Alabama.

The Retirement Systems of Alabama is financing the ambitious trail complex, comprising four 54-hole and two 36-hole facilities under construction in Auburn/Opelika, Birmingham, Calhoun County, Dothan, Greenville, Huntsville and Mobile.

All are scheduled to open within the year.

From the colorful cover capturing the water at Lagoon Park in Montgomery, to a biography of golf legend Jones by editor Kenneth Mullinax, to entertaining contributions by writers Ray Ford and Lynn Fulman, the magazine packs much useful information, including interesting capsules of the new courses. Referring to Alabama as "The State of Surprises," the authors may not be far off the mark. Golf activity there has received little attention nationally. A project spanning the state with a hefty price tag catches a reader's eye.

It states boldly that there is more to "ZBama than the Red Tide football teams of Coach Bear Bryant vintage.

CIRCLE # 220

PGMS publishes membership list

The 1992 Professional Grounds Management Society membership directory is now available, free to members and \$25 to others.

The 92-page book lists all 1,500-plus members of the society, comprising a combined market with annual budgets totaling more than \$100 million.

Also included in separate lists are the PGMS bylaws, officers, board of directors, 16 branches, past presidents since 1910, sustaining member organizations, certified grounds managers, and past Gold Medal recipients. The general membership listing is broken down alphabetically and by state.

Interested people should contact PGMS at 10402 Ridgland Road, Suite 4, Hunt Valley, Md. 21030; 410-667-1833. The manual has chapters on tools and equipment; pesticides; vehicle, equipment and tool maintenance; personnel; and grounds maintenance practices for turf, trees and shrubs.

CIRCLE # 221

Dobereiner returns

Peter Dobereiner's latest book, "Golf A La Carte," incorporates recent work of the writer and columnist.

His special brand of humor spices thoughts on the game professionals and others less and far less skilled players.

Cartoons illustrate the 192 pages. Price is \$19.95. Credits of the British resident include "The Book of Golf Disasters" and "Preferred Lies about Golf."

Publishers are Lyons & Burford, 31 West 21 St., New York, N. Y. 10010.

CIRCLE # 222

Golf Course Marketplace

To reserve space in this section, call Simone Marsteller, 813-576-7077

Exceptional Software...

SCMS

Superintendents
Compliance /
Management
System

"The Choice of TODAY'S Grounds Managers!"

An easy to learn software program for today's management and compliance needs.

NO SEMINARS REQUIRED

FREE DEMONSTRATION DISKETTES

Call Toll Free (800) 472-8882

Environmental Compliance Systems, Inc.
21 North Avenue Lake Forest, IL 60045

CIRCLE #160

OUTSTANDING!

Aqua Master
FOUNTAINS AND AERATORS



- Three Year Warranty.
- Exclusive Leasing Program.
- Lighting Packages.
- Interchangeable Nozzles.

16024 CTH X, KIEL, WI 53042 414 693-3121

CIRCLE #161



\$450
JOBCOMI



\$395
TEKK


2 WEEK FREE TRIAL

2-WAY PORTABLE SYSTEMS

800-362-0646

ANDERSON INSTRUMENT & supply co. 1850 Kimball Rd. S.E., Canton, OH 44707

CIRCLE #162



Why
HEAT

your
greens?

TURFTEMP

BioTherm 800-GET-HEAT PO Box 750967, Petaluma, CA 94975

CIRCLE #163



Nationwide delivery • Install in less than two hours

Golf Course Bridges!

1-800-328-2047

Thousands in use. Built to last.

Sponsor Member

CONTINENTAL BRIDGE

Route 5, Box 178, Alexandria, MN 56308 • (612) 852-7500

NGF NATIONAL GOLF FOUNDATION

CIRCLE #164

EP

AERATION

THE LEADER IN SUB-SURFACE ACTIVATED OXYGEN AERATION SYSTEMS

805-489-4218 • FAX 805-489-3235
946 GRIFFIN STREET • GROVER CITY, CA 93433

CIRCLE #165

Try A Red, White & Blue...

AIR CUT!

American Made. Not An Import.

GRASS CRAFT CORPORATION

Airborne Mowers

Handles Steep Slopes • Edges Deep Bunkers
Mows To Waters Edge • Floats Over Holes
No Wheelmarks Or Scalping

(207) 799-9550 202 U.S. Rte One, Suite 349
Call Us For The Name Of Falmouth, Maine 04105
The Dealer Nearest You Dealer Territories Available

CIRCLE #166

Keep That Edge

pinhigh
reel sharpening compound

Contact Your Local Distributor or Call Us
Toll Free 1 (800) 422-4748

CIRCLE #167

Golf Course Marketplace

To reserve space in this section, call Simone Marsteller, 813-576-7077

July

- 7 — Focus on Wetland Plants seminar in Seattle. Contact 206-685-8033.
- 15 — Annual Nursery Field Day in Virginia Beach, Va. Contact 804-363-3900.
- 23-25 — American Sod Producers Association Summer Convention & Field Days in Chicago. Contact 708-705-8347.
- 23-27 — American Association of Nurserymen Annual Convention and Nursery Industry Trade Show in Columbus, Ohio.
- 26-28 — International Lawn, Garden and Power Equipment Expo '92 in Louisville, Ky. Contact 800-558-8767.
- 26-28 — International Lawn, Garden and Power Equipment Expo in Louisville, Ky. Contact 800-558-8767.
- 30 — Turfgrass Management for Athletic Fields, Golf Courses and Landscapes seminar in Stillwater, N.Y. Contact 518-783-1229.

August

- 2-4 — Georgia Golf Course Superintendents Association summer conference at Pine Mountain. Contact 404-769-4076.
- 3 — West Texas GCSA meeting in Canyon. Contact Pam Deeds at 806-354-8447.
- 4-6 — Turfgrass Field Diagnostic Course for Golf Course Managers at Cornell University in Ithaca, N.Y. Contact Joann Gruttadaurio at 607-255-1792.
- 6 — New Jersey Turfgrass Research Field Day in North Brunswick.
- 9-12 — Cornell Compost Management Symposium for Professionals in Ithaca, N.Y. Contact Ken Cobb at 607-255-1185.
- 9-12 — 47th Annual Soil & Water Conservation Society Meeting in Baltimore. Contact 515-289-2331.
- 17-19 — Golf East Expo in Orlando, Fla. Contact 800-443-8318.
- 18 — Golf Course Design/Construction and Golf Day in Delhi, N.Y. Contact 800-873-TURF.
- 19 — Rhode Island Annual Turfgrass Field Day in Kingston. Contact Dr. Noel Jackson at 401-792-2932.

- 19-21 — Field Diagnosis: Insects and Diseases of Trees and Shrubs seminar in Ithaca, N.Y. Contact 518-783-1322.
- 20 — Michigan State University Turfgrass Field Day in East Lansing. Contact Frank Rossi at 517-353-0860.
- 22 — PGA of America's National Golf Day. Contact Julius Mason at 407-624-8444.
- 26 — Landscaping for Wildlife seminar in Cook College in New Brunswick, N.J. Contact 908-932-9271.
- 28-30 — Golfing '92 Indonesia in Jakarta. Contact 62 21 420-4300.

September

- 10-13 — Asian Golf Course '92 — Asian Golf Course Conference & Exhibition in Kuala Lumpur, Malaysia. Contact in Singapore 65 4473680.
- 20-23 — Florida Turfgrass Association annual conference and trade show in Jacksonville. Contact 800-882-6712.
- 23 — Oklahoma State University Turfgrass Field Day in Stillwater, Okla. Contact Dennis Martin at 405-744-5419.

October

- 3-6 — Golf '92 International Golf Trade Fair in Dusseldorf, Germany. Contact 312-781-5180.
- 4-6 — Marketing to Golf Facilities Seminar

Continued on page 52



EXCEL

BRIDGE MANUFACTURING CO.

Golf Course Bridges are our specialty! We fabricate easy-to-install, pre-engineered spans and deliver them anywhere in the U.S.A. Call today for a free consultation.

800/548-0054

12001 SHOEMAKER AVENUE, SANTA FE SPRINGS, CALIFORNIA
213/944-0701 FAX 213/944-4025

CIRCLE #168

TRIMS

THE WORLD LEADER IN
GROUNDS MANAGEMENT SOFTWARE

System Features:

- PERSONNEL & LABOR RECORDS • CHEMICAL APPLICATION LOGS • EQUIPMENT SERVICE RECORDS
- SPARE PARTS INVENTORY
- BUDGET & EXPENSES • AND MORE

Call or write today **LABB SYSTEMS/SOFTWARE**
for your FREE Demo Disk **6018 EAST OSBORN ROAD**
and Literature to see what **SCOTTSDALE, AZ 85251**
TRIMS can do for you! **(800) 733-9710**

CIRCLE #169

Keep Your Divot Seed Mixture Where It Is Used ...



... in Divot Seed & Soil tee buckets next to the tee markers. Available in Cedar or Redwood slats and with companion Trash™ debris buckets.

Ask Your Golf Course Distributor for
INNOVATIVE MAINTENANCE PRODUCTS

From

Master of the Links

P.O. Box 283, Lockport, IL 60441-0283
(815) 723-4444 • Fax (815) 723-4485



CIRCLE #170

GOLF COURSE CONSTRUCTION

NEW GOLF COURSES
GOLF COURSE RENOVATIONS



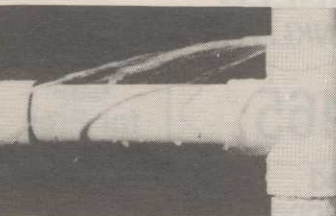
815 • 923 • 1868

Ask for Bob or Mark

18250 Beck Road, Marengo, IL 60152
Fax: 815•923•3662

CIRCLE #171

SYNTHO-GLASS PIPE REPAIR KIT



- * Stops Leaks!
- * Water Activated!
- * Sets in 30 Minutes!
- * No Mixing & Measuring!
- * Easy to Apply!
- * Use Directly from Package!

For more information call:

(800) 328-0090

NEPTUNE RESEARCH, INC.
FAX: 1-407-683-8366

CIRCLE #172

Timber Bridges

by Western Wood Structures, Inc.
Call Chuck Schmokel - 503/692-6900
1-800-482-4004

CIRCLE #173

Drag That Slimy

Stuff Out! Your orders to the grounds crew can get a different reaction. We developed an ALGAE RAKE to remove algae from your lake.

Ask Your Golf Course Distributor for

INNOVATIVE MAINTENANCE PRODUCTS

From

Master of the Links

P.O. Box 283, Lockport, IL 60441-0283
(815) 723-4444 • Fax (815) 723-4485



CIRCLE #175



**PAVELEC BROTHERS
GOLF COURSE CONSTRUCTION CO., INC.**

✓ New Construction

✓ Renovation

✓ Field Drainage Systems

TONY PAVELEC
(201) 667-1643
EMIL PAVELEC
(201) 939-6182

**98 Evergreen Ave.
Nutley, NJ 07110**

CIRCLE #174

Continued from page 51

in Oak Brook, Ill. Contact Rebecca Quinlan, Golf Course News at 207-846-0600.

5-7 — International Golf & Resort Development Show in Acapulco, Mexico. Contact 800-285-2332.

15-19 — Congress for Recreation and Parks in Cincinnati. Contact Pat Phillips at 703-820-4940.

21-23 — National Golf Foundation Golf Summit in Orlando, Fla. Contact NGF at 407-744-6006.

November

1-3 — Public Golf '92 for Public Golf Facility Managers in Oak Brook, Ill. Contact Rebecca Quinlan, Golf Course News at 207-846-0600.

1-3 — Georgia Golf Course Superintendents Association annual meeting on St. Simons Island. Contact 404-769-4076.

1-4 — International Irrigation Exposition and Technical Conference in New Orleans. Contact 703-524-1200.

4-5 — Annual Oklahoma Turfgrass Conference in Tulsa. Contact Dennis Martin at 405-744-5419.

10-13 — New York State Turfgrass Association annual Turf and Grounds Exposition in Rochester. Contact 800-873-TURF.

12-14 — Golf Course Europe '92 and International Golf Development and Investment Conference '92 in Monte Carlo. Contact Charles Duff at 415-453-1184.

15-19 — Professional Grounds Management Society Annual Conference in Indianapolis. Contact 401-667-1833.

29-Dec. 2 — Canadian Turf Grass Convention and Trade Show in Halifax, Nova Scotia. Contact Chuck Desveaux at 416-602-8873.

December

2-3 — Pacific Coast Turf & Landscape Conference & Trade Show in Seattle. Contact Scott White at 800-275-9198.

2-4 — Rocky Mountain Regional Turfgrass Association Annual Conference and Show in Denver. Contact 303-688-3440.

15-17 — Missouri Lawn & Turf Conference & Trade Show in Columbia. Contact 314-882-1953.

1993

January

11-15 — Cornell Cooperative Extension Turfgrass Short Course at Cornell University, Ithaca, N.Y. Contact Joann Gruttadauro at 607-255-1792.

14-16 — Mid-America Horticultural Trade Show in Chicago. Contact Donn Sanford at 708-526-2010.

March

15-21 — Pacific Rim Golf Course Conference and Show in Singapore. Contact 913-841-2240.

26-28 — West Michigan Golf Show in Grand Rapids. Contact 616-247-1931.

* — For more information or to register, contact Betsy Evans, education coordinator, Golf Course Superintendents Association of America, at 800-472-7878 or 913-841-2240. The seminars are dependent upon the availability of the instructors, and are therefore subject to change. One-day seminars cost \$100 for GCSAA members and \$120 for non-members; two-day seminars cost \$180 for members and \$210 for non-members.

Golf Course Marketplace

To reserve space in this section, call Simone Marsteller, 813-576-7077



Available in 15", 18" and 24" bars.

ACCU-GAGE™

Accu-gage™ is a precision measuring instrument for making highly accurate height-of-cut adjustments on greensmowers or other precision mowers.

GROOMER-GAGE™

Groomer-gage™ is a precision measuring instrument for accurately setting the desired grooming depth of groomer or verticutter units.

For more information on this and other precision tools call Toll Free: 1-800-253-2112 or 313-429-9571 FAX: 313-429-3985

PRECISION TOOL PRODUCTS CO. 7836 Bethel Church Rd. • Saline, MI 48176

CIRCLE #176

RANGE BOSS™



The LITE Range Picker

SGD P.O. BOX 8410 AKRON, OHIO 44320



Now SGD Company is pleased to offer the Range Boss™ line of LITE Pickers. From the husky tubular steel frames to the reinforced picker discs. The Range Boss™ is tough yet lite weight. Whether you need an EZ hand push single gang for hard to reach and light traffic areas, the three gang for medium traffic ranges, the five gang picker or seven gang picker for high customer count ranges. Choose the correct size then order Range Boss. Write or call Toll Free for your personal catalogue today.

TOLL FREE: 800-321-3411 (216)239-2828 FAX: (216)239-2668

CIRCLE #177

"NOVATEE"

The NOVATEE is a combination of specially manufactured synthetic grass of commercial quality. Its patented design, featuring top dressing imbedded between the fibers, allows golfers to tee up just like on natural grass.



The NOVATEE is the state-of-the-art synthetic tee surface for all courses & driving ranges.

Dealer inquiries requested.

PO/CP 533 CSL Montreal, P.Q., Can. H4V 2Z1 514/486-1696 Fax 514/486-9927

SyntenniCo Inc.

CIRCLE #178



MOTOROLA Radium PORTABLE RADIOS

- Free 2 week trial
- Radios start at* \$99
- Up to a 3 year warranty

CALL FOR MORE INFORMATION **PAGE.COM** 1-800-527-1670

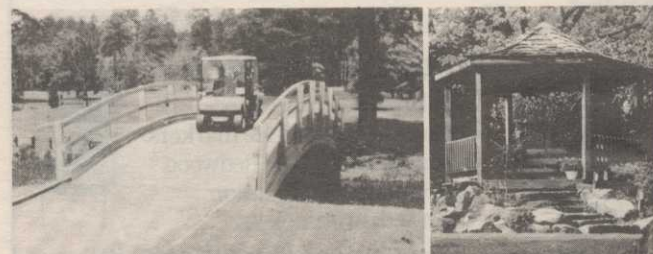
*OTHER BRANDS AVAILABLE

CIRCLE #180

Score a **HOLE IN ONE** with a **Classified Display Ad** like this one in **GOLF COURSE MARKETPLACE**

Call Simone Lewis today at **(813) 576-7077** for details...

CIRCLE #182



Glued-Laminated WOOD STRUCTURES

Order Direct From The Leading Manufacturer in U.S. Complete Prefabricated Packages Ready for Fast Erection Direct Distribution Throughout the U.S. Custom Design & Engineering UNIT STRUCTURES, INC. CALL 1-800-777-UNIT P.O. BOX A MORRISVILLE, N.C. 27560

CIRCLE #179

ENGRAVED YARDAGE LABELS

FOR SPRINKLER HEADS



Call for Free Sample Kit

- Bright colors
- Fasteners included
- Orders quickly shipped UPS

1-800-284-YARD

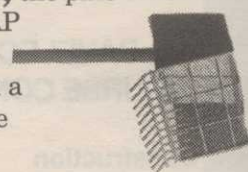
THE YARD EDGE GOLF CO.

P.O. Box 13159

Wichita, KS 67213

CIRCLE #181

Get Out The Nuts, the pine cones & the rocks with the SAND TRAP RENOVATOR. Made of a sturdy frame covered with a mesh cage, it cleans up the act.



Ask Your Golf Course Distributor for **INNOVATIVE MAINTENANCE PRODUCTS**

From

Master of the Links

P.O. Box 283, Lockport, IL 60441-0283 (815) 723-4444 • Fax (815) 723-4485



CIRCLE #183

Golf Course Marketplace

To reserve space in this section, call Simone Marsteller, 813-576-7077

ON THE GREEN

Mission possible

Continued from page 54

the newly enlarged greens.

Petersan could not begin employment full-time until last Oct. 1, so he flew to Baltimore each weekend during September to coordinate and implement the renovation process. As the frequent flyer miles improved, so did the greens.

"We used the Verti-Drain three times, using solid tines so the undesirable subsoil would not be brought to the surface. The holes were filled with straight sand along with the thatch layer after the sod was removed," Petersan said. "We did not remove the sod at Prairie Dunes, but did at BCC, proving that each club's renovation must adapt to their local condition."

Factors in the decision include:

- The amount of thatch. If there is a lot, the sod usually should be stripped.
- The feeling by some superintendents that stripping sod will change green contours.
- The "gut feeling" of club members.

Seeding rates with Pennlinks were three-fourths pound pure live seed in two directions per 1,000 square feet. Petersan had the luxury of closing the course as his members played on the other 18-hole layout.

ONE MORE SUCCESS STORY

Mark A. Yoder of Scioto Country Club in Columbus, Ohio, recently renovated his greens with another unique set of circumstances. Scioto was designed by Ross in 1916 and was remodeled in the early 1960s by Dick Wilson, who fully restored the bunkers and putting surfaces to their original design.

In the last 30 years, the greens had become about 80 percent poa annua. The other 20 percent was Old Orchard creeping bentgrass that was stolized. The greens had to be hand-watered in the heat of the day and seed head production during the spring and fall provided inconsistent playing conditions.

Yoder took advantage of having the greens closed during renovation by restoring all the greenside sand bunkers. He stripped the sod, found the "original" sand/topsoil delineation, repaired and/or added drainage pipe, and then re-sodded the sand bunker banks and in between the greens and bunkers with bluegrass.

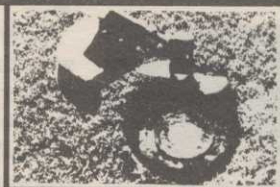
Meanwhile, he built temporary greens, from scratch, on the par-3s that did not already have bentgrass fairways, and then sodded them. The 150-yard markers were relocated in relation to the temporary green locations; the temporary course was laser-measured for scorecards; the course was played from one set of tee markers instead of the customary three sets; the ladies still teed off from their respective markers; and the membership was kept happy.

Yoder closed the regulation greens the third week of August 1991 and chose not to strip the sod off. His procedure was similar to the other clubs in that he used methyl bromide. Deep-aerification, accomplished the two previous falls, was repeated before re-seeding with Pennlinks. A pythium preventive application of a granular Subdue was applied for added insurance.

The green contours were not changed, another advantage of doing this type of renovation to maintain the original character of the course design.

The Pennlinks seed was pre-germinated before seeding in three directions at a combined rate of 1-1/2 pounds pure live seed per 1,000 square feet, as the seed was blended with fine grade Milorganite for consistency.

"The greens were opened on May 1, and the members said it was definitely worth all the time and effort involved," Yoder said.



The DonuT Trimmer Edging Blades

- Easily attaches to most commercial string trimmers.
- Edges any size sprinkler head, valve box, yardage marker, etc. in seconds.
- Edges bunkers, cart paths, railroad ties in minutes.

To Order or if you have any questions about blade operation call Thomas Wait or Andy Masciarella at:

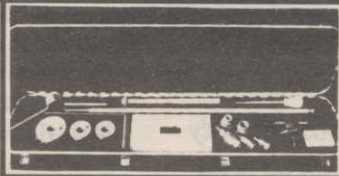
Precision 1-800-345-1960

Patented & Licensed to Precision Small Engine Co. by Thomas R. Wait

The Original . . . LEVEL-EEZ

Patented

\$795



This complete kit allows you to raise Toro® and Rainbird® Valve-In-Head Sprinklers in a fraction of the time with no digging. Satisfaction Guaranteed.

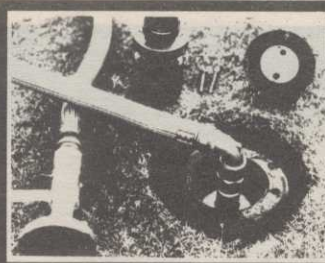
Beware of imitations.

To Order Call:

Precision 1-800-345-1960

Patented & Licensed Exclusively to Precision Small Engine Co. by Thomas R. Wait

CIRCLE #184



The Aqua-Quick Coupler

(swivels optional)

The Aqua-Quick is made of solid aluminum & easily changes Toro® and Rainbird® Valve-In-Head Sprinkler into a 1" water source instantly.

\$39.95 and \$44.95

Don't wait for dry areas to appear.

To Order Call:

Precision 1-800-345-1960

Patented & Licensed to Precision Small Engine Co. by Thomas R. Wait



Aqua-Key

This pocket-sized device allows you to activate Toro® and Rainbird® Electric Heads with one tool, which is made of hardened steel and plated for long-life.

\$19.95

Key ring & screwdriver included.

To Order Call

Precision

1-800-345-1960

Designed & Licensed to Precision Small Engine Co. by Thomas R. Wait

CIRCLE #185



Kool Shot Injection System

"A must for wilt watch."

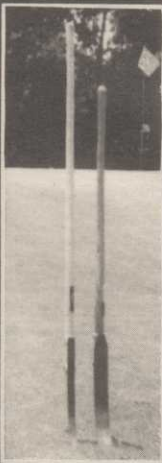
\$259 plus case

The Kool Shot Injection System allows you to completely explode and saturate hydro-phobic or localized dry areas 8" below the putting surface or fairway using the 15 high pressure horizontal jets with water, wetting agents, insecticides or air.

To Order Call:

Precision 1-800-345-1960

Designed & Licensed to Precision Small Engine Co. by Thomas R. Wait



1" & 2" Super Slim Shovels

Custom shovels made of hardened steel for small trench clean-out.

You've been waiting for these!

\$39.95

To Order Call:

Precision

1-800-345-1960

Designed & Licensed to Precision Small Engine Co. by Thomas R. Wait

CIRCLE #186



Safe - T - Key

This is a one-piece, quick coupler valve-key with extended handles which allow easy and safe ON-OFF operation. Also a patented hose holder which allows you to remove the key using two hands and relieve hose pressure simultaneously.

\$69.95

- Repairable (key-way), not a throw-away
- Eliminates high PSI safety hazard
- Eliminates kicking keys on/off
- Plated steel construction

To Order Call: **Precision 1-800-345-1960**

Designed & Licensed to Precision Small Engine Co. by Thomas R. Wait



Stabilizer \$39.95



\$12.95 Booted Cover

Quick Coupler Stabilizer

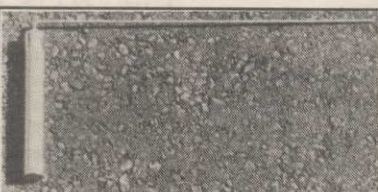
- Permanently stops any in-ground valve movement.
- Eliminates high PSI safety hazard.
- Install in minutes without digging
- Made of stainless steel and aluminum

To Order Call:

Precision 1-800-345-1960

Designed & Licensed to Precision Small Engine Co. by Thomas R. Wait

CIRCLE #187



PIPE LOCATOR THE LOCAT™ INEXPENSIVE

Locates, traces underground pipes, including drain pipes, made of PVC, ABS, steel and cement. Finds sprinklers, valves and clogs.

Used by Hundreds of Golf Courses

Satisfaction Guaranteed

Bloch & Company

Box 18058, Cleveland, OH 44118

(216) 371-0979

CIRCLE #189

The Greens Encroachment Barrier System

This system is the only tested, proven, and patented method of completely stopping Bermuda Grass encroachment.

For more information or quotation call:

407-624-4203

Thomas R. Wait, Design, Sales, Installation • Paul R. Latshaw, Consultant
TRW Ent. Inc., 840 US Hwy I, Suite 340, N. Palm Beach, FL 33408

CIRCLE #188