

## Snow says TRACS on verge of comeback

Turf Renovation and Construction Services (TRACS), the controversial U.S. Golf Association Green Section course construction consultancy service, could be launched late this year or early in 1993, according to Green Section National Director Jim Snow.

TRACS would employ Green Section agronomists to oversee building techniques and ensure quality construction. The Green Section agreed to temporarily shelve the idea earlier this year while it sought architects' and builders' input.

Some believed the program represented unfair competition. TRACS, they argued, would do much of the same work architects and build-

ers are paid to do.

The Green Section believed the service could prove valuable, especially to smaller architectural firms that lacked the Green Section's agronomic expertise.

"The architects and builders seem comfortable with it now," Snow said. "We're providing some TRACS services already through the Turf Advisory Service."

The start of TRACS will coincide with the new USGA greens specifications expected later this year as the result of Cornell University Extension Service researcher Dr. Norm Hummel's year-long study.

## Irwin hard at work in Colo.

LAFAYETTE, Colo. — A new 18-hole public golf course designed by Hale Irwin Golf Services, Inc. is under development here. The Jan. 10 groundbreaking set the stage for the \$4.25 million construction project called Lafayette Golf Course at Indian Peaks.

Irwin, a former Boulder County resident, said the golf course he envisions will be one that golfers of all skill levels can enjoy. "This is not going to be Colorado's most difficult golf course, that's not the intent," he said. "This won't be

unplayable. It should have enough variety to appeal to people of all abilities."

Richard M. Phelps, golf course architect for Hale Irwin Golf Services, Inc., said the Beauvez property lends itself well to the golf course project. The long views and excellent soil are especially beneficial.

According to Phelps, "What we don't have out here right now, we'll create," noting that many trees will be planted on the site.

"I've seen a number of golf course communities where it's obvious that they built a golf course and then decided to build homes all around it," said Bob Beauvez, who represents the landowners. "We want an integration of the two projects so they connect in a positive way."

## Young oversees \$4.5-million Georgia project

WATKINSVILLE, Ga. — Mike Young Designs has designed and is now overseeing construction of a new 18-hole project here.

Lane Creek Golf Course will be situated on 677 acres of undeveloped land in Oconee County with future plans for residential development. The course will be par 72 and measure 7,000 yards. Set on rolling land lending itself to a traditional golf, the course will feature water on several holes.

Paul Hawkins, an Atlanta attorney and president of Lane Creek Properties, Inc., said the entire project is expected to be in the \$4.5-million range, including a clubhouse of 3,500 square feet. Lane Creek Golf Course will be an up-scale daily-fee course with greens fees ranging from \$30 to \$35, including a cart.

The expected opening of the course is Sept. 15, 1992.

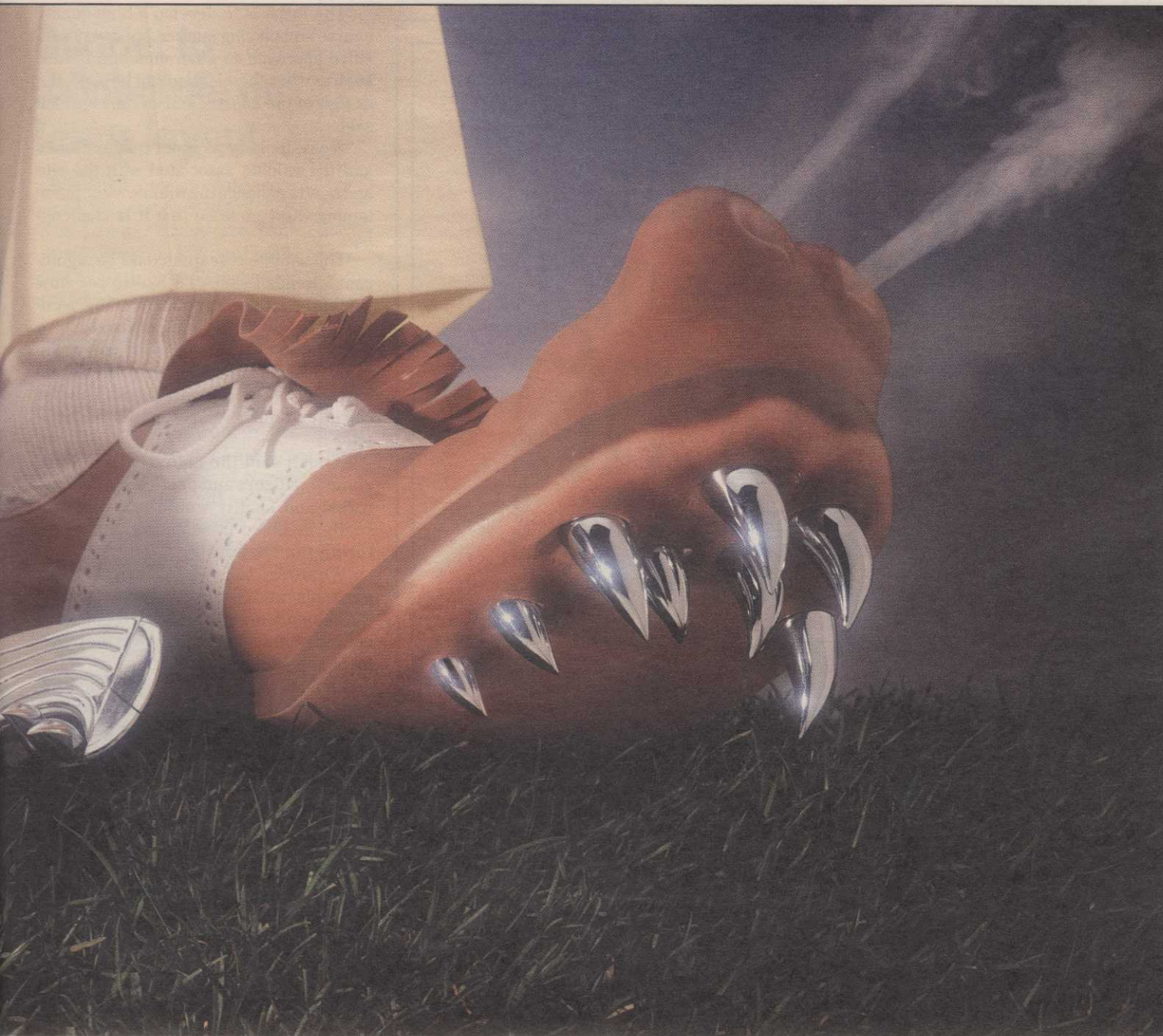
## Frei opens Wash. course

WOODINVILLE, Wash. — Nearby Echo Falls Country Club, a par-70, 6,006-yard course opened for public play May 28.

The 79-home, semi-private golf course community is being developed by Bellevue-based Steve Burnstead Construction Co.

PGA Golf Professional Scot Solomonson, head pro/golf director, and Lisa Rowe, special events director, will head up the Echo Falls' management team. Solomonson, formerly the acting pro at Northshore Golf and Country Club in Tacoma, comes to Echo Falls with 12 years pro experience.

The course was designed by local PGA professional and golf course architect Jack Frei.



# THE AVERAGE GOLFER.

Pink and Gray Snow Mold and Fusarium Patch.

And because CHIPCO® brand 26019 provides long-lasting control, and is registered for use on a wide variety of high-value ornamentals, you can keep more of your course



**Chipco® 26019**  
Fungicide

disease-free all season long.

This year, take the bite out of traffic pressure with the proven disease protection of CHIPCO® brand 26019 fungicide. Available in wettable powder and smooth-pouring flowable formulations.

CIRCLE #128