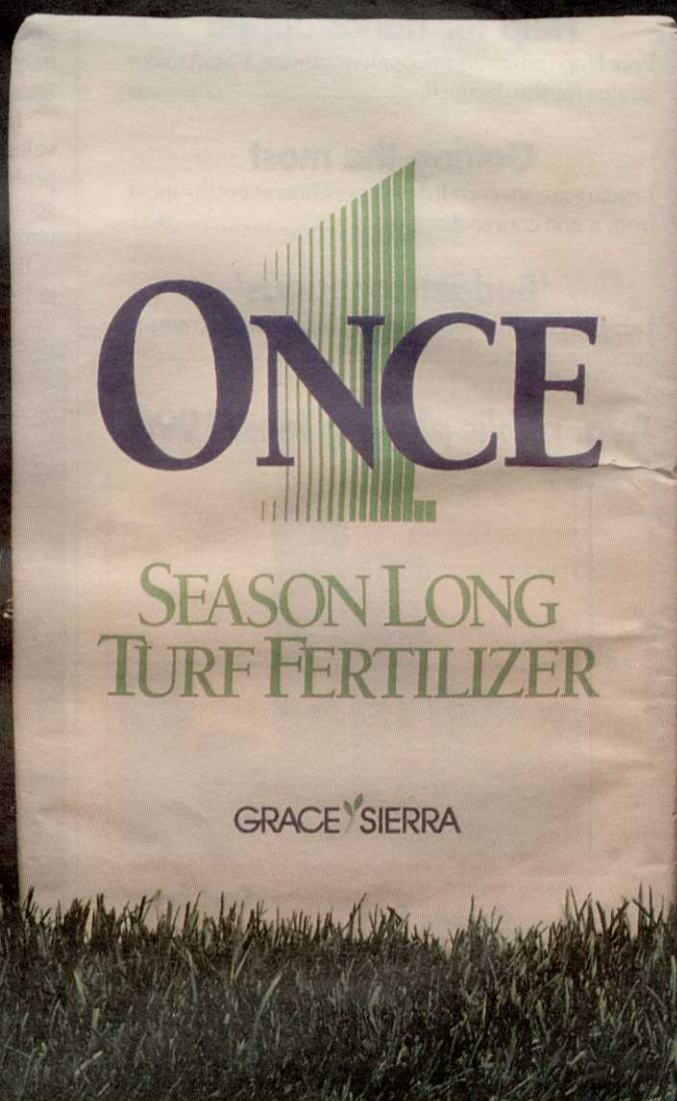


# For Consistent Superior Growth Apply Just



ONCE™ gives you consistent, superior turf color and growth because it feeds continuously—all season.

ONCE eliminates the “feast or famine” effects of conventional fertilizers. This insures uniform, superior growth—with even mowing cuts. And minimal nutrient pollution.

ONCE was developed using our OSMOCOTE® resin coating technology, the leading controlled release fertilizer worldwide. This unique system meters nutrients continuously—every day—for a full season.

Because release is based *only* on temperature—not water, pH, or bacteria as with other fertilizers—nutrient availability matches turf and plant growth needs.

ONCE is available in a variety of analyses and 8-9 and 5-6 month longevities.

ONCE. Contact your Grace-Sierra turf/landscape distributor or call us toll-free at 1-800-492-8255.

Use ONCE, just once, for the best results all season long.

**GRACE SIERRA**

# This may be the most beautiful golf car you've ever seen.



She's been around awhile. Up and down countless hills. Carelessly smashed and violently thrashed. Stuck, struck, rocked, rolled, bumped, bruised, used and abused.

Yes, she's worn. But worn out? Not yet.

That's because she's a Yamaha. And the beauty of that distinction? She's a tougher car—built with tougher standards. So Yamaha cars, gas and electric, outperform and outlast all others. On your course and your bottom line.

So if you're not driving a Yamaha fleet, you're not driving the kind of revenues you could be. And that's trouble. But doing something about it is no trouble at all. Just give us a call at 1-800-447-4700. We'll show you some real beauties.

**YAMAHA USA**  
Better in the long run.

# On a golf course a bad score should be the only thing that stinks.

Foul odors, algae and sludge in golf course ponds are enough to ruin anyone's game. The results of poor water management can be unsightly, smelly and costly.

Now Otterbine has developed CONCEPT<sub>2</sub>, the new high-technology surface aerators that can revolutionize your approach to water quality management.

CONCEPT<sub>2</sub> High Volume aerators are built to last, made of stainless steel and tough, versatile thermoplastics, with a rugged, custom built motor and a virtually unbreakable stainless steel prop designed to handle large volumes of water.

And CONCEPT<sub>2</sub> offers almost unlimited versatility, with easily installed, totally interchangeable spray patterns.

SUNBURST<sub>2</sub> in Otterbine's CONCEPT<sub>2</sub> line answers the challenge of producing a sparkling water display with minimal effect on pumping rates.

CONCEPT<sub>2</sub> and SUNBURST<sub>2</sub>, fulfill the Otterbine tradition of scientifically designed, highly efficient, compact, self-contained aeration systems. They are simple to install and economical to operate.

They need no foundation, external pumps, or other costly plumbing fixtures. All Otterbine Aerators are safety tested and approved by the Electrical Testing Laboratory.

Call or write, today, to find out how CONCEPT<sub>2</sub> can help you keep your water quality up to par.

SUNBURST<sub>2</sub>

CONCEPT<sub>2</sub> High Volume



## Water works with Otterbine.

P.O. Box 217, Emmaus, Pennsylvania 18049 • (215) 965-6018

# The 2nd International Golf Exhibition & Conference

**BE THERE!**

Canada  
USA  
UK  
Europe  
South Africa  
Korea  
Japan  
Taiwan  
Hongkong  
Malaysia  
Singapore  
Indonesia  
Australia  
New Zealand

**GOLF ASIA '92**  
26-29 March 1992

Singapore World Trade Centre

- The region's premier golfing event featuring
- \* Golf Course Architects and Designers
  - \* Golf Course Maintenance and Equipment
  - \* Golf Equipment and Accessories
  - \* Golf Apparel and Fashion
  - \* Golf Holiday Resorts
  - \* Golf Driving Range and Equipment
  - \* Golf Educational Videos and Magazines
  - \* Golf Trophies and Souvenirs
  - \* Other Golf Related Products and Services

Golf Asia Exhibition and Conference, the event that took the world by storm early this year is back again. Much bigger than Golf Asia '91, not only in terms of size and shape alone, it has attracted more principal exhibitors and agents from all over the world than ever expected. This means big business for exhibitors and a spectacular show for Golf enthusiasts.

Endorsed by  
**Singapore Golf Association**  
**Thailand Golf Association**  
**The Golf Association of the Republic of China**

Organised By



**CONNEX PRIVATE LIMITED**

(International Exhibition Division)  
7500A Beach Road #07-308/9, The Plaza, Singapore 0719  
Tel: (65) 2966961 Fax: (65) 2935628 Tlx: RS 36463 CONNEX

CIRCLE #131

In conjunction with the exhibition, the **2nd Asia Pacific Golf Conference** will be held at Marina Mandarin hotel from 24-26 March 1992. The conference is geared to put you ahead of your competition and provide you with an indepth study of the global golfing industry. Exchange your views with the key principals of the Golfing World in this major conference.

Fax or mail the reply coupon or your business card today.

would like details on attending the Asia Pacific Golf Conference  
 would like details on exhibiting at Golf Asia '92 Exhibition

Name: .....  
Position: .....  
Company: .....  
Address: .....  
Fax: .....  
Tel: .....

Please tick where applicable

Official Airline  
**SINGAPORE AIRLINES**

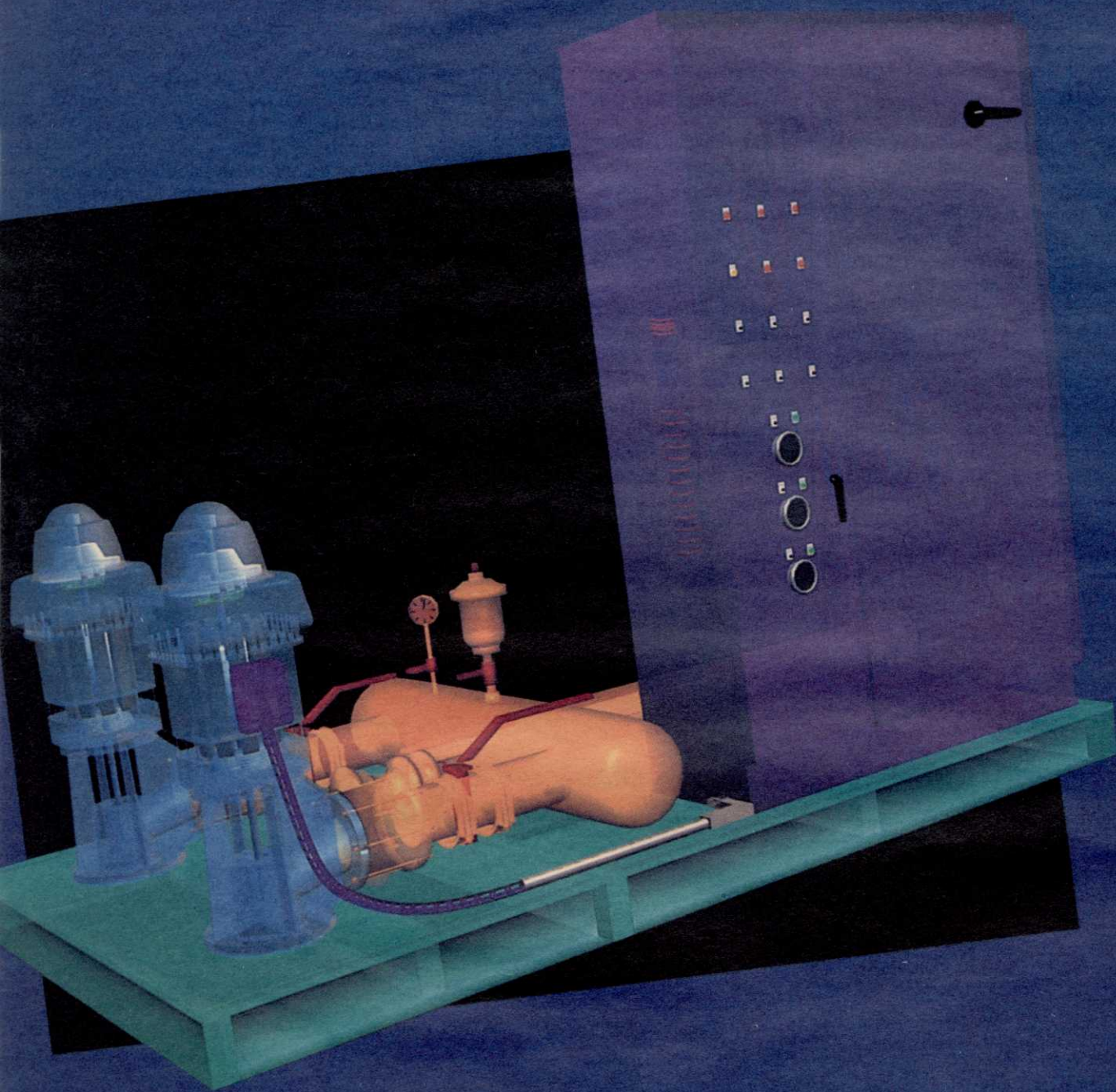


Official Publication  
AUSTRALIAN  
**GOLF**  
DIGEST

Supporting Publication  
**Golf Vacations**

# FLOWTRONEX

*Variable Speed Pumping Systems*



## THE FIRST

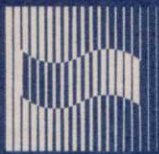
Flowtronex was the first national pump station manufacturer to install variable speed pumping stations for golf course irrigation.

## THE BIGGEST

Flowtronex manufactures more variable speed pumping stations than all of our competitors combined. In fact, over 2/3 of all golf course variable speed installations were built by Flowtronex.

## and still THE BEST

Over 10 years of building variable speed systems gives us something none of our competitors can match --- EXPERIENCE! We continually incorporate this experience along with new engineering developments to improve and enhance our VSPS line of pump stations. NOBODY makes a better variable speed pump station than Flowtronex.



**FLOWTRONEX**  
*International*

Flowtronex International  
1631 Northwest Professional Plaza  
Columbus, Ohio 43220  
614-442-5850  
1-800-PUMPSTATION  
(1-800-786-7782)



Flowtronex V-Series VFD pump stations combine smooth efficient operation with proven reliability to give you the best value on the market.

**VSPS** Variable Speed  
Pumping Systems

# SURF-SIDE WETTING AGENT

ARMEN SUNY

MARSHALL FEARING



TOURNAMENT  
DIRECTOR

## CASTLE PINES GC

HOME OF THE INTERNATIONAL  
TOURNAMENT, CASTLE ROCK, CO.

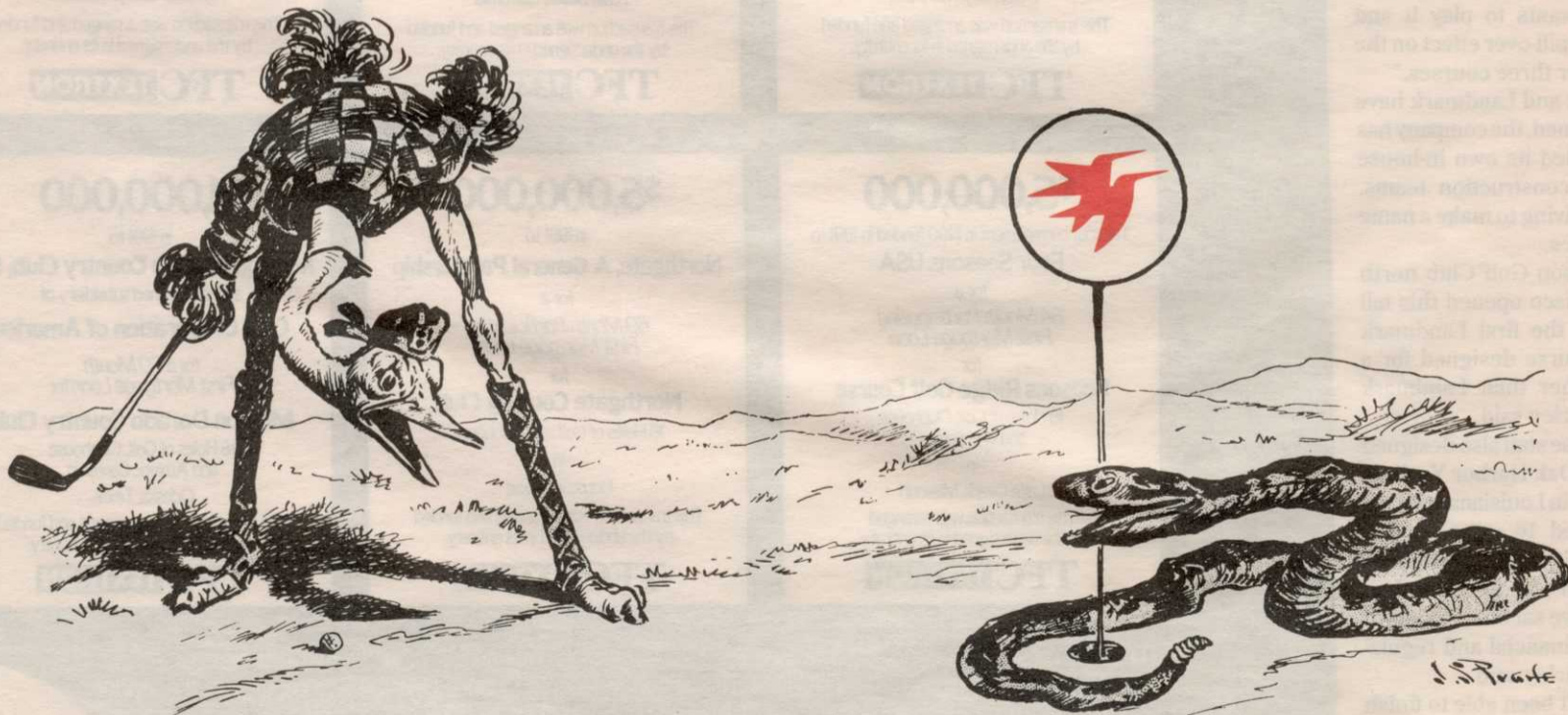
For the "International" we spray everything inside and outside the gallery ropes with Surf-Side #37 and Iron. Our fairway program during the summer is 3-oz Surf-Side/M and 1½-oz Iron/M applied every other week. We don't water-in the application. The Iron mixed with Surf-Side does wonders for the grass! Greens receive 1 qt./M Surf-Side to start season.



GOLF COURSE  
SUPERINTENDENT

Back in 1986 we had lots of fairway areas that didn't take water well. Localized dry spots were a real problem due to thatchy turf and a clay-gravel soil. With 40 days over 90°F and winds coupled with 15 to 25% humidity the exposed sites dried out rapidly. A program of aeration plus Surf-Side has reduced this problem significantly. At Castle Pines hand watering isn't just hand watering any more . . . any remaining dry areas on fairways are hit with Surf-Side using a quick coupler and a 5-gal tank proportioner containing a premix of 1½ gals Surf-Side #37 to 3½ gals water. This gives us one quart Surf-Side to sixty gallons water applied as a drench. A repeat application usually isn't needed for up to 4 weeks. Our fairways are irrigated twice a week. When conditions warrant we also premix Surf-Side and Iron (with water) in a 50-gal tank and inject this into the irrigation system.

Fairways were originally seeded to Seaside and Astoria bent. Tees and greens to Penncross. We now oversee fairways with Penncross and SR 1020.



SURF-SIDE DOESN'T BURN, DISCOLOR, OR ROOT PRUNE

ZAP! DEFOAMER

MONTCO PRODUCTS CORPORATION  
BOX 404  
AMBLER, PA 19002

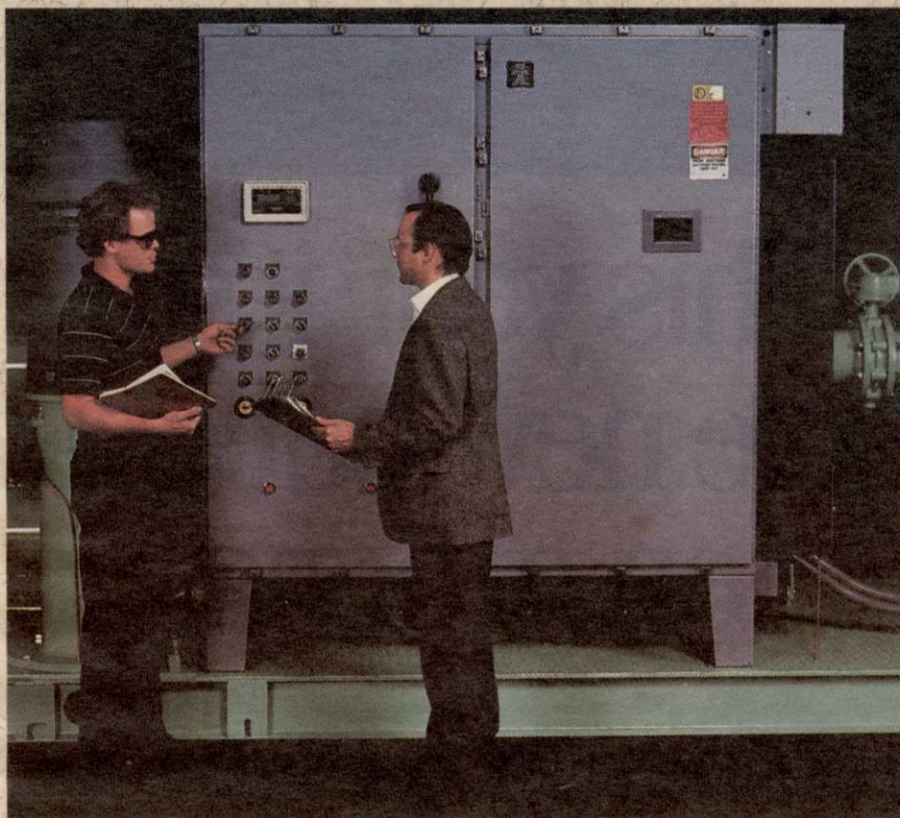
BLEND 37

# VARIABLE FREQUENCY DRIVE PUMP CONTROL

From the Innovative Leader in Prefabricated  
Water Pumping System Design

## **Pumping Systems,**

**Inc.** manufactures custom made prefabricated water pumping systems that provide maximum efficiency and low operating cost exclusively for turf grass managers. Extensive research has been conducted by PSI engineers over the past seven years to seek improved water pumping techniques including the design and construction of Variable Frequency Drive (VFD) controlled pumping systems. Since 1988, PSI has delivered VFD systems to turf grass irrigation projects across the United States.



## **Today, PSI continues this research and development**

in order to provide the most reliable systems available. Some standard features include: U.S. manufactured, state-of-the-art VFD; custom designed computer control software; dehumidified air cooler for the control panel; power filter; and a system capacity

relief valve. These features ensure the durability, reliability and operator confidence required for today's turf irrigation pumping systems.

**PSI has a factory trained national service network.** For prompt service or more information on the finest turf irrigation pumping systems available, contact your nearest dealer or:



# **Pumping Systems, Inc.**

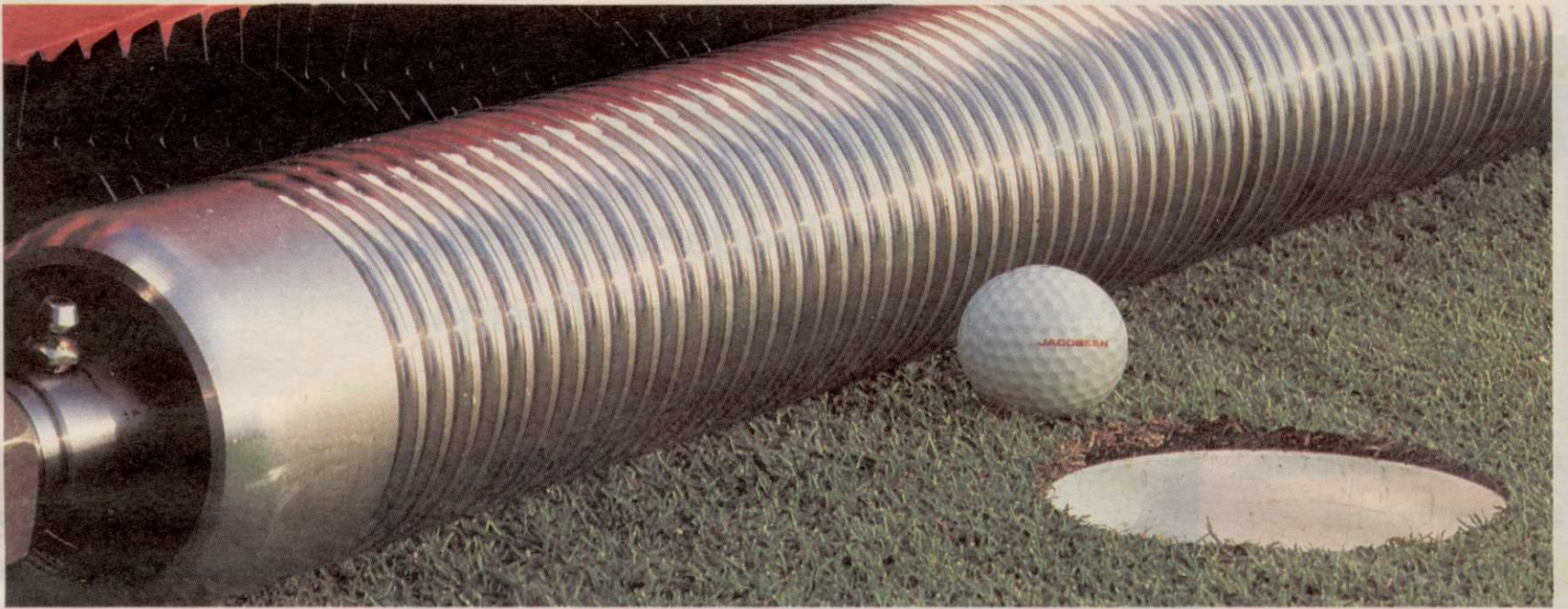
10717 Harry Hines Blvd.

Dallas, Texas 75220

(214) 357-1320

Toll-free (800) 527-0539

FAX (214) 357-5861



This year it's a  
whole new ballgame  
on greens.

See why  
at the GCSAA Show,  
Booth 2546  
Feb. 15-17.

THE PROFESSIONAL'S CHOICE ON TURF.



Jacobsen Division of Textron, Inc.