

# Senior Skins venue Mauna Lani's new layout

*Francis I'i Brown  
North Course  
opens with a flair*

A brand new South Course at Mauna Lani Resort on the Big Island of Hawaii's Kohala Coast will stack up against some of golf's greats at the fifth annual Senior Skins Game, Jan. 25-26.

Designed by Homer Flint in conjunction with the Honolulu-based design firm of Belt Collins and Associates, the South Course is the result of nine holes being added to the existing front nine of the Francis H. I'i Brown Golf Course.

Another nine holes were added to the back nine of the original Brown course, and the result is Mauna Lani's North Course.

"We are very pleased with the expansion of our courses at Mauna Lani and we know the South Course will provide the Senior Skins Game competitors with a super test on Super Bowl weekend," said Jerry Johnston, director of golf for Mauna Lani Resort, Inc.

Meandering over the dark, rich lava flows of Kalahuipua'a, the South Course offers dramatic ocean views.



One of the Francis H. I'i Brown South Course's two ocean holes, the par-3 7th will challenge Senior Skins Game players with an onshore wind on Super Bowl weekend, Jan. 25-26. Tee shots must carry a shoreline lava cliff. The large two-tiered green nestles in front of windswept kiawe grove. Any shot to the left will land in sand, lava or sea.

It was designed to be enjoyed by the average player as well as professional.

The North Course emphasizes rolling fairways. Groves of twisted kiawe trees along the fairway edges

and more pronounced topography give it a flavor that contrasts sharply with the South Course.

## Course OK'd on farmland

ALBANY, Ore. — The Linn County Board of Commissioners has backed a Planning Commission decision not to allow building a golf course on the 346-acre farm of Jefferson brothers Leighton and Monte Weddle.

The Planning Commission ruled last May that the location would not be suitable for a golf course because it is in a flood plain and flood way, and because the land is zoned for exclusive farm use.

## Pen Park a year ahead of schedule

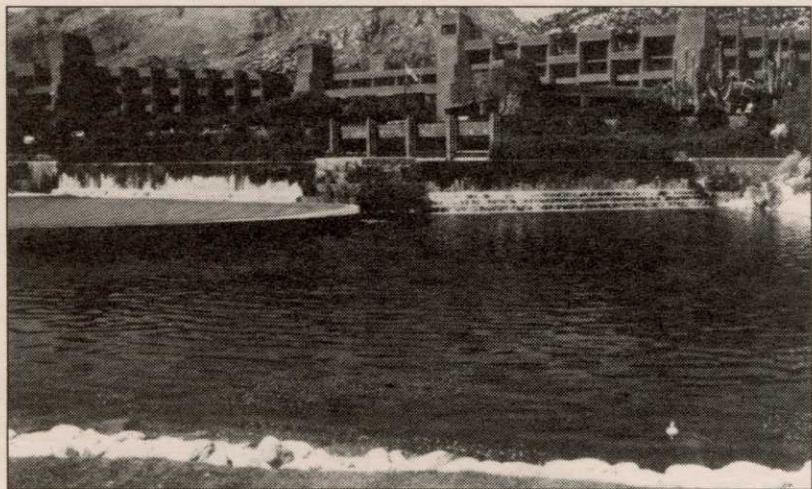
PEN PARK, Va. — Pen Park Golf Course's new nine holes could be completed next summer, one year earlier than anticipated.

The City Council approved the \$1.5 million expansion of the nine hole layout about 14 months ago.

City parks and recreation director Eugene German said the stepped-up construction schedule requires the city to send an emergency \$90,000 to fertilize the new nine and cut the grass until the course is ready for play.

The money would go to hire four course attendants, lease mowing equipment and pay for chemicals.

## Success In Golf Is Often Measured In Inches.



The scenic 18th green and unique water feature at Ventana Canyon Resort near Tucson, AZ.

### At The Watersaver Company, We Measure Success In Zero Leakage.

For over 20 years, our lining systems have been used to prevent seepage loss in lakes for some of the country's finest golf courses.

We specialize in the fabrication and installation of membrane liners for decorative lakes, traps, greens and aquascapes. So, before you design or build your next project, talk to us.

We can assist you with the right technology that will prevent your work from becoming a real hazard.

And, if your existing lakes are showing signs of leakage, it may be time to retrofit with Hypalon\* or PVC membrane liners fabricated for both durability and cost effectiveness.

For assistance with specifications and cost estimates on your next golf course project, contact the Watersaver Company today!



\*Hypalon is a Registered Trademark of E. I. DuPont

WATERSAVER CO., INC. • Plant/General Office • 5870 E. 56th Avenue • Commerce City, CO 80022  
PO Box 16465 Denver, CO 80216 303-289-1818 • 800-525-2424 • FAX 303-287-3136

**SIGNAL™**  
Spray Colorant  
**TRUE BLUE™**  
Lake and Pond Dye

*Now in Water Soluble Packets*

Precision Laboratories, in developing SOLUPAK water soluble packets, now delivers the same outstanding performance of Signal™ and True Blue™ with these convenient handling features:

- Convenient and clean – no staining worries
  - Quick dissolving
  - Safe-to-handle
  - Premeasured for easy application
  - Avoids container disposal and messy spills
- SIGNAL SOLUPAK is a highly visible temporary blue spray indicator.
- Non-toxic; environmentally safe
  - Assures accuracy
  - Totally compatible and water soluble
  - Highly concentrated

TRUE BLUE SOLUPAK brings a natural blue to your ponds and lakes. It's true to nature's living colors, not artificial in appearance.

- Non-toxic; environmentally safe
- Harmless to fish, wildlife and other aquatic species
- Long-lasting

800-323-6280

**PRECISION LABORATORIES, INC.**

P.O. Box 127, Northbrook, IL 60065

Signal and True Blue are trademarks of Precision Laboratories, Inc.

