

The Most Profitable Golf Car For Your Course. Shown With Its Closest Competitor.

Improved comfort. Increased performance. Unmatched efficiency. No other golf cars can measure up to the 1992 E-Z-GO gas and electric cars.

Our new gas car features the first twin cylinder overhead cam engine in the golf car industry. More power. Less noise. And performance unequalled by any single cylinder engine.

And our electric car, with the solid state energy control and the Total Charge® charger, is still the most efficient electric golf car money can buy.

Both cars give you more rental time on the course. Trademark smooth ride. Flexible financing options. And the industry's most extensive service network. That all adds up to higher profitability.

Maybe that's why more of the top 100 golf courses run with E-Z-GO than any other car. Call 1-800-241-5855 to find your nearest E-Z-GO representative. Take our car out for a test drive. You'll see there's just no equal.

EZGO TEXTRON

E-Z-GO Division Of Textron, Inc.

©1991 E-Z-GO Textron.

Location courtesy of Marriott's® Seaview Resort.

CIRCLE #101/GCSAA BOOTH #2556

The Fungicide Turf Managers Swear By (Not At).



For more than 20 years, turf managers have known Fungo® is the fungicide they can always trust—for reliability and effectiveness.

Fungo provides broad spectrum control of most major turf and ornamentals diseases. And, Fungo is economical to use. Its systemic activity keeps

on working for up to 14 days with one application.

Fungo Controls All These Turf Diseases:	
• Dollar Spot	• Summer Patch
• Brown Patch	• Necrotic Ring Spot
• Anthracnose	• Fusarium Patch
• Copper Spot	• Fusarium Blight
• Red Thread	• Stripe Smut

And now, Fungo is available in dry flowable form, as well as in liquid flowable and WP. Just choose the one that's perfect for you.

Contact your Grace-Sierra distributor today and tell him you want Fungo.

Or call us today toll-free at 1-800-492-8255.

Use Fungo. You'll swear by it for good.



GRACE SIERRA
Tournament Condition Every Day.

Fungo 85 DF is not available for sale in California. © 1991 Grace-Sierra Crop Protection Company. Fungo is a registered trademark of Grace-Sierra Crop Protection Company.

CIRCLE #112/GCSAA BOOTH #1625-1629

It's

What's Below The Surface That Counts!



High Density Polyethylene Float:

Filled with US Coast Guard approved closed cell foam. Always floats level, stays afloat even if punctured or damaged. S/S fasteners provide longer life.

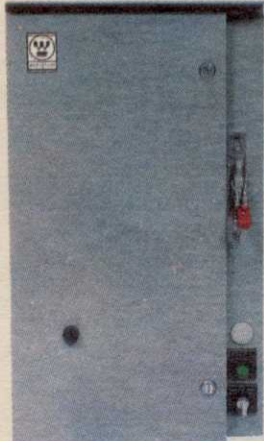
4 Pole/High Torque Motor:

Designed specifically for aeration. Runs longer and cooler at 1725 RPM. Easy to maintain. Rebuildable, not disposable.

Lubricating Oil:

Developed by a major oil company for lubricating and very low dielectric capabilities. Acts as heat transfer.

Power Control Center:

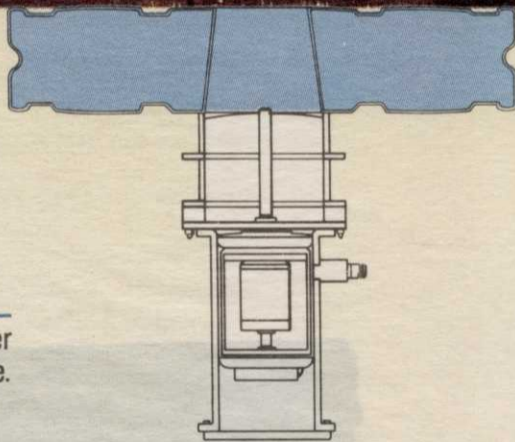


Exclusive Westinghouse motor controls provide maximum built-in protection. UL, CSA and ETL approved. Standard equipment, not an option.

Safety Tested:



All Otterbine aerators are safety tested and approved by ETL.



High Volume, Low Pressure Impeller:

Designed to aerate and move large volumes of water. Precision pitched Stainless Steel affords increased efficiency.

Plug-Type Underwater Connector:

Designed for Otterbine. Easy connect and disconnect makes installation and service simple.

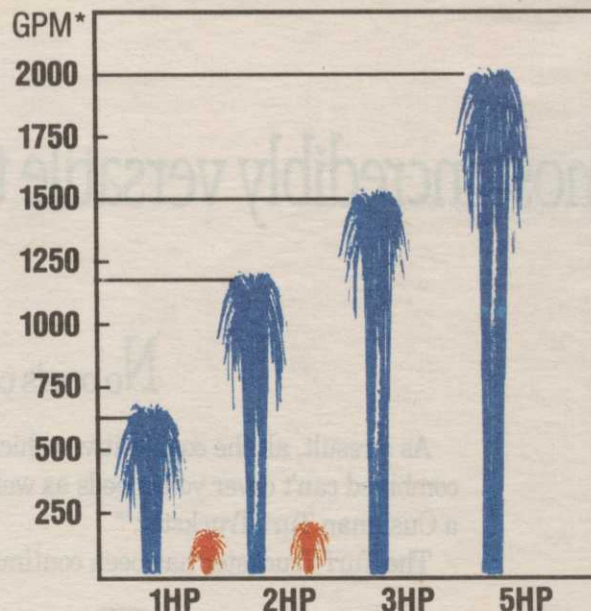
Strong Distributor and Service Network:

Over 130 distributors nationwide with 35 service centers staffed by factory trained personnel.



Otterbine®

We are the competition.



*Gallons Per Minute Pumped

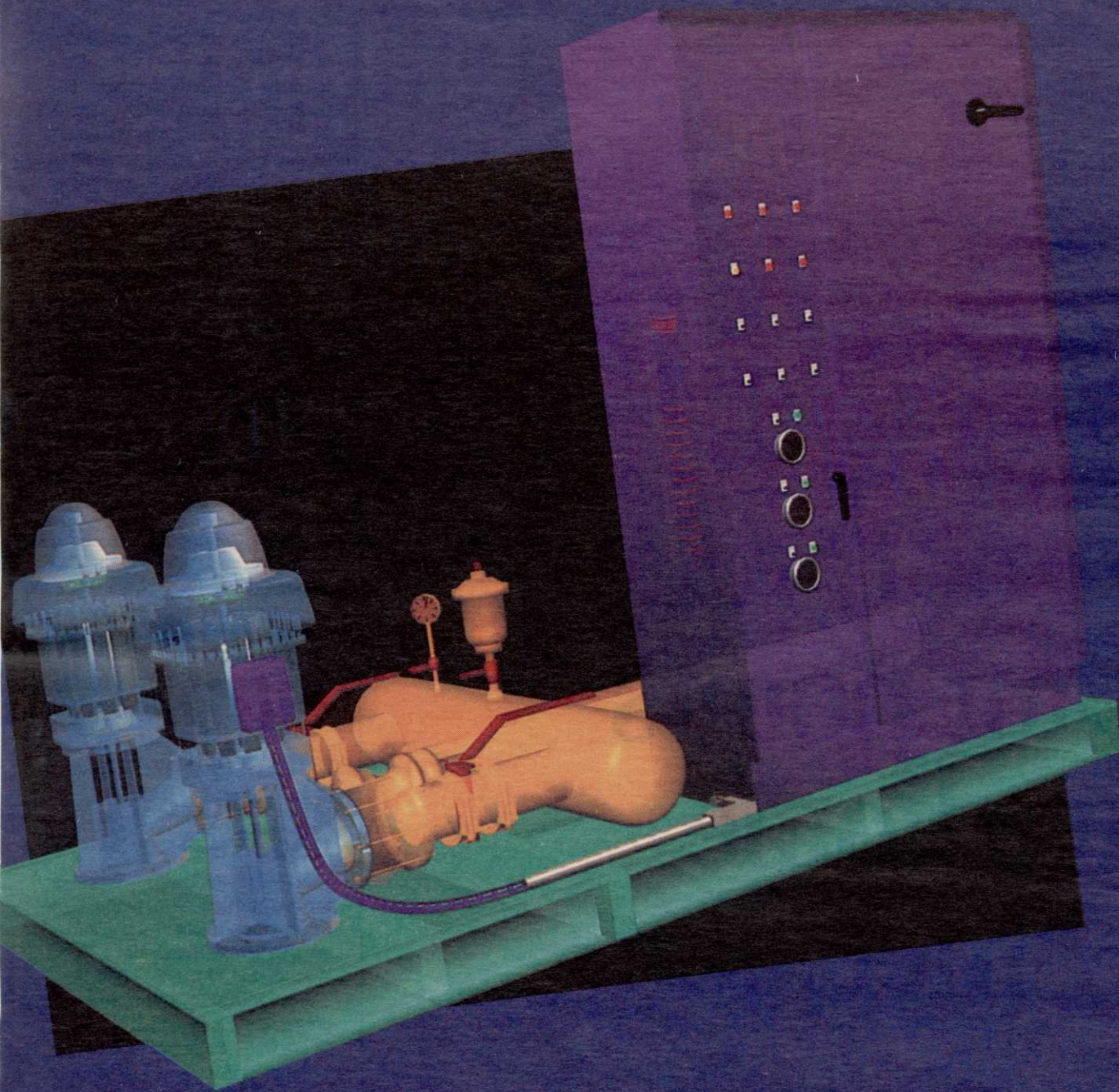
BAREBO, INC.

P.O. Box 217, R.D. 2 • Emmaus, PA 18049 • Phone (215) 965-6018 • Fax (215) 965-6050

CIRCLE #128/GCSAA BOOTH #2209

FLOWTRONEX

Variable Speed Pumping Systems



THE FIRST

Flowtronex was the first national pump station manufacturer to install variable speed pumping stations for golf course irrigation.

THE BIGGEST

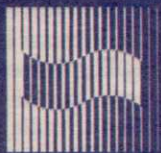
Flowtronex manufactures more variable speed pumping stations than all of our competitors combined. In fact, over 2/3 of all golf course variable speed installations were built by Flowtronex.

and still THE BEST

Over 10 years of building variable speed systems gives us something none of our competitors can match --- EXPERIENCE! We continually incorporate this experience along with new engineering developments to improve and enhance our VSPS line of pump stations. NOBODY makes a better variable speed pump station than Flowtronex.



Flowtronex V-Series VFD pump stations combine smooth efficient operation with proven reliability to give you the best value on the market.

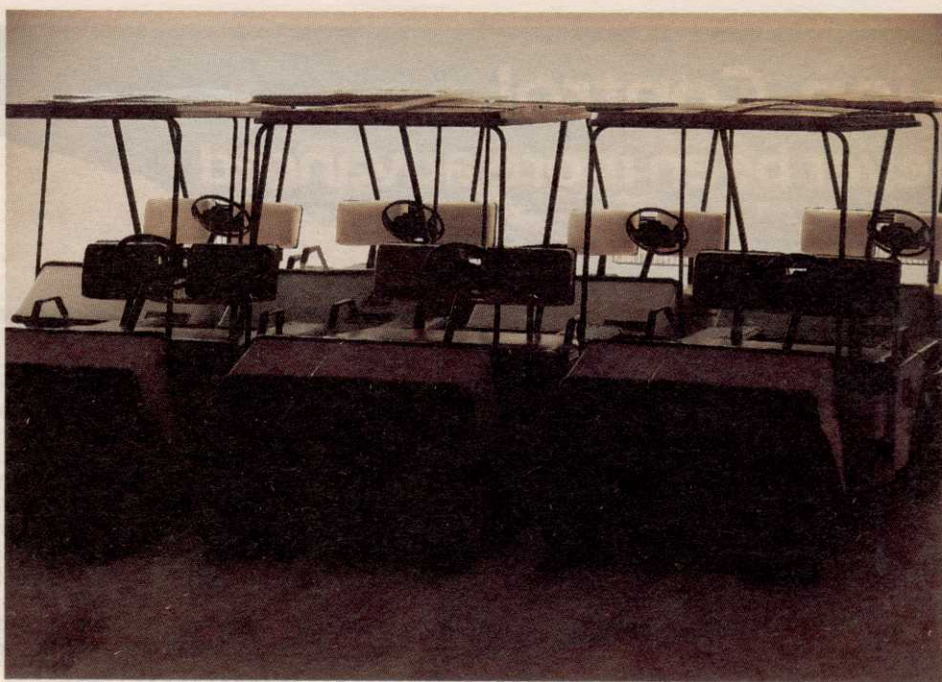


FLOWTRONEX
International

Flowtronex International
1631 Northwest Professional Plaza
Columbus, Ohio 43220
614-442-5850
1-800-PUMPSTATION
(1-800-786-7782)

VSPS Variable Speed
Pumping Systems

Chances are you have 50 losers working at your course.



Every manufacturer claims to make the best golf car. But only Yamaha can prove they make a winner. In completely independent tests, Yamaha emerged as a clear victor when pitted against Club Car and E-Z-Go*. It was a Yamaha car that rated first in four out of four tests that measured both electric car and gas car economy. The lowest noise output? Also a Yamaha.

Cleanest-burning gas car? Yamaha again.

For a detailed look at these test results, call 1-800-447-4700, or return the reply card. And if you'd like to know how Yamaha performs outside the test arena, ask for your free copy of our "Winning the Golf Car Game," video. You'll get a first-hand look at course operators all over the country telling you what they already know.

If you're not running a Yamaha fleet, you're losing out.

YAMAHA USA
Better in the long run.

*Tests conducted by Otto Labs, 1991. Test results available.

GOLF COURSE NEWS

THE NEWSPAPER FOR THE GOLF COURSE INDUSTRY

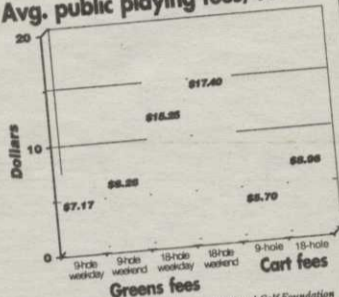
A UNITED PUBLICATION
VOLUME 4, NUMBER 1
JANUARY 1992

Help for handicapped
Fore Hope program, national committee, USGA make strides for the disabled. 5

Getting the most
Leading architects tell developers how to get the most from a golf course designer. 9-11

'Budget-conscious'
Larry Flatt institutes course development program for communities. 30

Avg. public playing fees/1990



COURSE MAINTENANCE
Squaw Creek living under no-chem rules 17
George Frye accepts Kiawah test 18
USGA thrilled with Pebble Beach renovations 25

COURSE DEVELOPMENT
Course Builders Ass'n maps strategic plan 27
Donald Ross Society winning members 29
Keith Foster opens own design firm 37

COURSE MANAGEMENT
Upscale public courses gain popularity 45
NGF report tells the score on fees 45
CMAA adds 5,000th member 45

SUPPLIER BUSINESS
RISE announces new board members 49
Sumitomo works deal with Innova 10
New products hit marketplace 54-57

Hawaii council nixes impact fees

By Peter Blais
The Honolulu City Council has unanimously overridden Mayor Frank Fasi's veto and adopted a golf course development policy that rejects the mayor's suggested \$100-million impact fees.

Instead the policy encourages developers to integrate the golf course project into the local community while setting strict social, economic and environmental requirements. Bill 129 establishes guidelines for judging among the numerous proposals submitted for review annually on the island of Oahu, where at least 40 courses are in preliminary planning stages.

But critics complain the ordinance still fails to address how many more courses should be allowed on the island or where they can be located. One of the primary areas of concern is near already crowded Kaneohe Bay on the northeast side of Oahu, where another 14 courses have been proposed and residents are concerned about the bay's water quality.

"The ordinance is rational and scientifically based," said Stuart Cohen of Environmental & Turf Services, a Wheaton, Md.-based firm that has done environmental risk assessments in Hawaii. "It takes the proposals, provides a rational basis for making decisions, and requires that good people are available to manage the turf."

Cohen, who testified at an August workshop concerning Bill 129, agreed that the number of courses and where they should be located are important issues that still need to be addressed on

Continued on page 34

The Best of 1991

The annual *Golf Course News* survey votes are in. The winners are:

Architect:
Tom Fazio
story, page 27

Builder:
Wadsworth
story, page 27

Resort Developer:
Landmark Land Co.
story, page 45

Conditioned Resort
Course on Tour:
TPC at Sawgrass
story, page 17



One of the most talked-about holes at architect Tom Fazio's Ocean Course at Pelican Hill Golf Club in Newport Beach, Calif., is the 13th. It features two small greens fronted by a large area of coastal scrub and sand. The Ocean Course opened in November. A second 18-hole venue at Pelican Hill — the Canyon Course — is slated for completion some time later. The project was developed by The Irvine Co. For more on Pelican Hill and other new golf courses, see pages 27-43.

Photo by John Connell

Sherman Hollow dealt a blow by Vt. board

By Peter Blais
The Vermont Environmental Board has denied the latest attempt to obtain a building permit for the Sherman Hollow Golf Course in Huntington.

But course developers, who have spent seven years and hundreds of thousands of dollars seeking approval for the multimillion-dollar resort under the state's strict Act 250 development

See related story on Squaw Creek, page 17.

law, are not giving up. They feel the board made "substantial mistakes" and are asking it to reverse its ruling, according to Sherman Hollow President Paul Truax.

"It's a step we had to take within 30 days of the board's decision," said Truax,

who submitted the appeal on the final day of the one-month deadline.

The board denied the latest reconsideration for a land-use permit — which included the developers' promise not to use chemical pesticides or fertilizers — because of problems regarding waste disposal, streams, water supplies and soil erosion.

Continued on page 12

USGA puts rebuffed TRACS on hold

By Peter Blais
The U.S. Golf Association Green Section has temporarily shelved plans for its new construction consulting service after receiving complaints from golf course architects and builders that it

represents competition and unnecessary oversight. Green Section Director Jim Snow still hopes to establish the program, but will delay its launch until some "unfortunate misunderstandings" are clarified.

Snow announced the introduction of Turf Renovation and Construction Services in mid-November.

Headed by Mid-Continent Section Director Jim Moore, TRACS is designed as a

Continued on page 39

TO: WILLIAM "TIM" HIERS
JOHN'S ISLAND CLUB
350 BEACH ROAD
VERO BEACH, FL 32963

The most important people in the golf course industry make our front page every month.



People like Tim Hiers, Golf Course Manager of the 54 hole private John's Island Club in Vero Beach, Florida.

Past President of the Florida Golf Course Superintendents Association, Tim received the organization's Distinguished Service Award in 1986 and is currently their Chairman of Government Relations. Tim is a seminar instructor for several organizations and is also a special consultant to the PGA.

Hiers likens *Golf Course News* to "a Reader's Digest of the golf course industry," with topics that are "interesting, well-written, and pertinent to golf and its environment."

If you want to reach Tim and 22,000 others who are the most important people in the industry ... decision makers at nearly every course in America, call *Golf Course News* today.

It's "addressed" for success.

GOLF COURSE NEWS

7901 Fourth Street North, Suite 311
St. Petersburg, FL 33702
(813) 576-7077

VARIABLE FREQUENCY DRIVE PUMP CONTROL

From the Innovative Leader in Prefabricated
Water Pumping System Design

Pumping Systems,

Inc. manufactures custom made prefabricated water pumping systems that provide maximum efficiency and low operating cost exclusively for turf grass managers. Extensive research has been conducted by PSI engineers over the past seven years to seek improved water pumping techniques including the design and construction of Variable Frequency Drive (VFD) controlled pumping systems. Since 1988, PSI has delivered VFD systems to turf grass irrigation projects across the United States.



Today, PSI continues this research and development

in order to provide the most reliable systems available. Some standard features include: U.S. manufactured, state-of-the-art VFD; custom designed computer control software; dehumidified air cooler for the control panel; power filter; and a system capacity

relief valve. These features ensure the durability, reliability and operator confidence required for today's turf irrigation pumping systems.

PSI has a factory trained national service network. For prompt service or more information on the finest turf irrigation pumping systems available, contact your nearest dealer or:



Pumping Systems, Inc.

10717 Harry Hines Blvd.
Toll-free (800) 527-0539

Dallas, Texas 75220
FAX (214) 357-5861

(214) 357-1320

In this domain, the King reigns supreme.

Ask
About
NO PAY 'TIL
MAY 1, 1992
Thru Participating Distributors



- Lightest footprint, best weight distribution to minimize compaction.
- Exclusive nine blade reel with full-floating, articulated steering set the standard in fine greens mowing.
- Power backlapping standard.
- Patented Turf Groomer® for truer, healthier greens.
- New, large, easy-to-use grass catchers.
- Choose 16½ HP diesel or 16 HP gas engine.

A superior quality of cut makes the Greens King IV® the most popular greens mower in the world. With the lightest footprint in the industry, the Greens King has the best weight distribution between all three wheels to minimize compaction. **Exclusive features are standard.**

Exclusive, fully floating, pivoting reels steer through turns without scuffing or marking on the clean-up pass. Individual reel control and power backlapping are standard to keep reels sharp with less work. The Jacobsen quality reel sets the standard for fine greens mowing. All this at a competitive price.

New, large capacity grass catchers are easier to attach and remove. For maximum durability and

economy, choose the 16½ HP diesel with power steering or choose the 16 HP gas engine.

Greens King performance with the ultimate exclusive: Turf Groomer.®

Jacobsen's new, patented Turf Groomer greens conditioner gives a smoother, truer putting surface without grain. The unique design increases green speeds up to 25% without lowering height of cut, producing truer and healthier greens.

Now heavier, larger diameter rollers, higher side frame clearance and improved durability make the Turf Groomer better than ever. Quick-lift levers let you raise the Turf Groomer ¾" to skip conditioning.

See why the King reigns supreme. Contact your Jacobsen distributor for a demonstration.

JACOBSEN
TEXTRON

Jacobsen Division of Textron Inc.