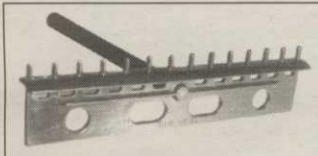


Golf Course Marketplace

To reserve space in this section, call Simone Marsteller, 813-576-7077

NEW LITERATURE

Everything you've heard is TRUE!



TOUR-LEVEL™ SAND RAKES

The ONLY Tour-approved rake with:

- * No-Splinter Oval Handle
- * Flow-Thru Smoothing
- * Polycarbonate Head

**FREE
SAMPLE!**

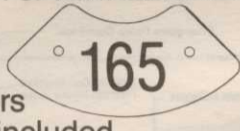
**(919) 765-GOLF
(4653)**

Innovative Golf Products, 104-5 Griffith Plaza Drive
Winston-Salem, NC 27103 FAX (919) 765-9955

CIRCLE #150

ENGRAVED YARDAGE LABELS

FOR SPRINKLER HEADS



Call
for Free
Sample Kit

- Bright colors
- Fasteners included
- Orders quickly shipped UPS

1-800-284-YARD

THE YARD EDGE GOLF CO.

P.O. Box 13159

Wichita, KS 67213

CIRCLE #152



PAVELEC BROTHERS GOLF COURSE CONSTRUCTION CO., INC.

- ✓ New Construction
- ✓ Renovation
- ✓ Field Drainage Systems

TONY PAVELEC
(201) 667-1643
EMIL PAVELEC
(201) 939-6182

98 Evergreen Ave.
Nutley, NJ 07110

CIRCLE #154

TEX-NET INC.

Manufacturer of barrier netting, wind and shade screen and crowd control fencing is the industry's pro of choice.

Tex-Net has perfected techniques that ensure longer field life and maximum resistance to the ultra-violet rays of the sun.

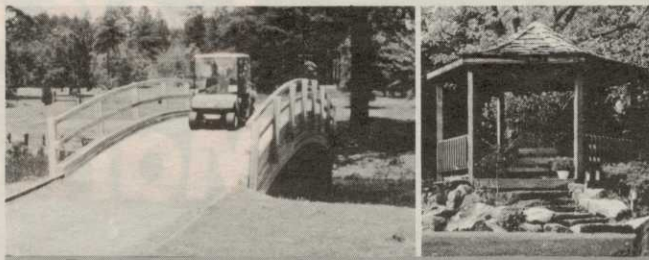
Tex-Net manufactures both 1/2 and 1-inch heavy duty mesh in widths that range from 6 to 50 feet wider than any other manufacturer and lengths to meet your specifications. With Tex-Net you're bound to improve your handicap.

**Increase your net worth
by keeping your expenses under par.**

Call or write for free samples
Tex-Net, Inc.

Box 315, Riverton, NJ 08077 • 609-499-9111

CIRCLE #156



Glued-Laminated WOOD STRUCTURES

Order Direct From The Leading Manufacturer in U.S.

- Complete Prefabricated Packages
- Direct Distribution Throughout the U.S.
- Ready for Fast Erection
- Custom Design & Engineering

UNIT STRUCTURES, INC.
P.O. BOX A MORRISVILLE, N.C. 27560

CALL
1-800-777-UNIT

CIRCLE #151

"NOVATEE"

The NOVATEE is a combination of specially manufactured synthetic grass of commercial quality. Its patented design, featuring top dressing imbedded between the fibers, allows golfers to tee up just like on natural grass.



The NOVATEE is the state-of-the-art synthetic tee surface for all courses & driving ranges.

Dealer inquiries requested.

PO/CP 533 CSL
Montreal, P.Q., Can. H4V 2Z1
514/486-1696
Fax 514/486-9927

SyntenniCo Inc.

CIRCLE #153

Keep Your Divot Seed Mixture Where It Is Used ...



... in Divot Seed & Soil tee buckets next to the tee markers. Available in Cedar or Redwood slats and with companion Trash'M debris buckets.



Ask Your Golf Course Distributor for
INNOVATIVE MAINTENANCE PRODUCTS

From

Master of the Links

P.O. Box 283, Lockport, IL 60441-0283
(815) 723-4444 • Fax (815) 723-4485



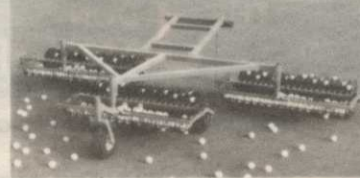
CIRCLE #155

RANGE™ BOSS



The LITE Range Picker

SGD P.O. BOX 8410
AKRON, OHIO 44320



Now SGD Company is pleased to offer the Range Boss™ line of LITE Pickers. From the husky tubular steel frames to the reinforced picker discs. The Range Boss™ is tough yet lite weight. Whether you need an EZ hand push single gang for hard to reach and light traffic areas, the three gang for medium traffic ranges, the five gang picker or seven gang picker for high customer count ranges. Choose the correct size then order Range Boss. Write or call Toll Free for your personal catalogue today.

TOLL FREE: 800-321-3411 (216) 239-2828
FAX: (216) 239-2668

CIRCLE #157

Score a
HOLE IN ONE
with a
Classified Display Ad
like this one in
GOLF COURSE MARKETPLACE

Call Simone Lewis today at
(813) 576-7077

for details ...

CIRCLE #158



Architect Tom Doak and son, Michael.

Doak designs second career as book author

Praise is coming from many corners for golf course architect Tom Doak's newbook, *Anatomy of a Golf Course: The Art of Golf Architecture*.

"Tom Doak is a practicing golf architect and a dedicated student of golf design," said noted course designer Tom Fazio. "He is also quite good at explaining many of the more technical aspects of golf architecture in easily understood terms."

"This book will appeal to the many golfers who find golf architecture a fascinating subject and want to learn more about it."

Doak is known to many as architecture editor for *GOLF Magazine*. Said Editor-in-Chief George Peper: "On one level, this is a lucid book inside the mind of a golf architect. On a second, more important level, it's an instruction book—it tells you how to read a course."

A Traverse City, Mich.-based designer, Doak is considered one of the brightest young stars on the architectural horizon. Among his best-known works is Black Forest at Wilderness Valley in Gaylord, Mich., listed as one of the Top 10 New Courses You Can Play in *GOLF Magazine*.

He has also done High Pointe Golf Club in Williamsburg, Mich., and The Heathland Course at The Legends in Myrtle Beach, S.C. He is working on facilities in Charlotte, N.C., and Elverson, Pa., 45 minutes west of Philadelphia.

Shortly after graduating from Cornell University, Doak worked for architect Pete Dye, getting involved in such projects as PGA West. "Of all the things I learned from Pete," Doak wrote, "the most important was just how much was involved in getting a great golf course from the dream to the ground. That is one lesson I hope will come across clearly in this book."

It does.

Doak delves deeply into the areas of routing, esthetics, design psychology, greens, tees, fairways, hazards, practice facilities, redesigns and restorations.

Superintendents and developers might find the chapter "Maintenance — The Architect's Perspective" particularly interesting.

"The golf architect has a vested interest in maintenance because, as conditions change, so does a golfer's perception of the design," Doak wrote.

"The architect must be careful not to design features which are impossible to maintain, or are so costly that they undermine the economics of the project."

The 256-page book contains 50 illustrations and a foreword by Ben Crenshaw. The cost is \$22.95. *Anatomy of a Golf Course* is available from Lyford & Burford Publishers, 31 West 21 Street, New York, N.Y. 10010; telephone 212-620-9580.