

Reduced spray drift

The Wind Cone, new from Environmental Technologies, is designed to control spray drift and can be retrofitted to any sprayer to reduce off-target drift by up to 300 percent. Made from durable polyethylene plastic for years of trouble-free service, it's designed to let you spray when you want to — not just when the wind lets you. For more information, call 1-306-343-7811.

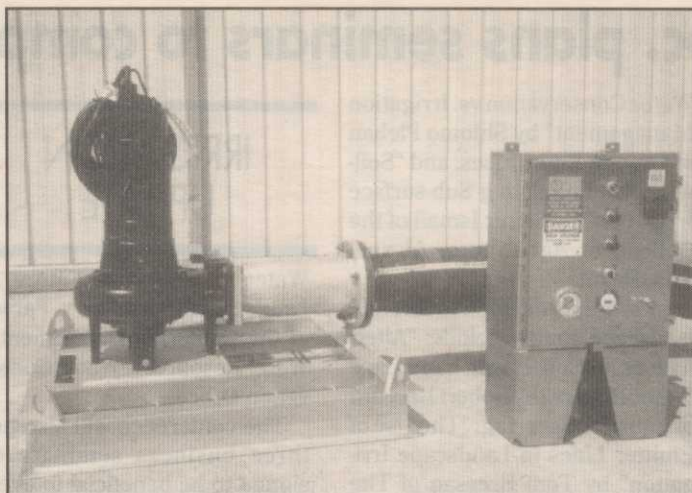
CIRCLE# 205

Controlling snow mold

Grace-Sierra Horticultural Products Company has introduced Penstar PCNB turf fungicide for long-lasting control of snow mold, brown patch and other key turf diseases. New Penstar 75WP and 10G turf fungicides have the same label and use rates as other PCNB products.

Penstar 75WP is a preventive, wettable powder soil fungicide. It's available in granular form. Both products are not yet available in California. For more information, call 1-800-492-8255.

CIRCLE# 204



The Skid-N-Pump from Greenscape Pump Services

Hidden water works

The Skid-N-Pump from Greenscape Pump Services, Inc. is designed to provide an unobtrusive, cost-effective package for water transfer, fountains, waterfalls and irrigation applications.

Skid-N-Pump can be designed with either a submersible turbine or submersible trash-style pump and comes with a U.L. Listed Control Panel.

The skid is also designed to keep the pump intake approximately one foot off the bottom of the water source, and the flexible SBR hose allows for easy maintenance access or relocation.

The Skid-N-Pump is designed to eliminate the need for wet well structures and concrete pump slabs. For more information, call 1-214-393-0346.

CIRCLE# 203

Turning on a dime

Ransomes newest riding mower, the Lynx 2000, features zero turning radius and optional clippings pick-up.

With the Lynx 2000, an operator has the option of collecting clippings or — by changing a pin and removing a quick-change panel — discharging clippings back to the turf. Changing from side-discharge to blower pick-up takes just a few seconds and can be completed without tools.

The Lynx 2000 is powered a 16-horsepower Vanguard Twin engine and features twin hydro ground drive with individual steering control to each wheel. The three-blade deep draft cutting deck cuts a 42-inch swath, and cutting height can be adjusted from 1 1/2 to 4 1/2 inches in 1/4-inch increments. The 11.5-cubic-foot dump catcher has a "see-through" poly tank, so the operator can tell when the hopper is full.

For more details on the Lynx, call Ransomes at 800-228-4444.

CIRCLE# 202

Fingertip reel control

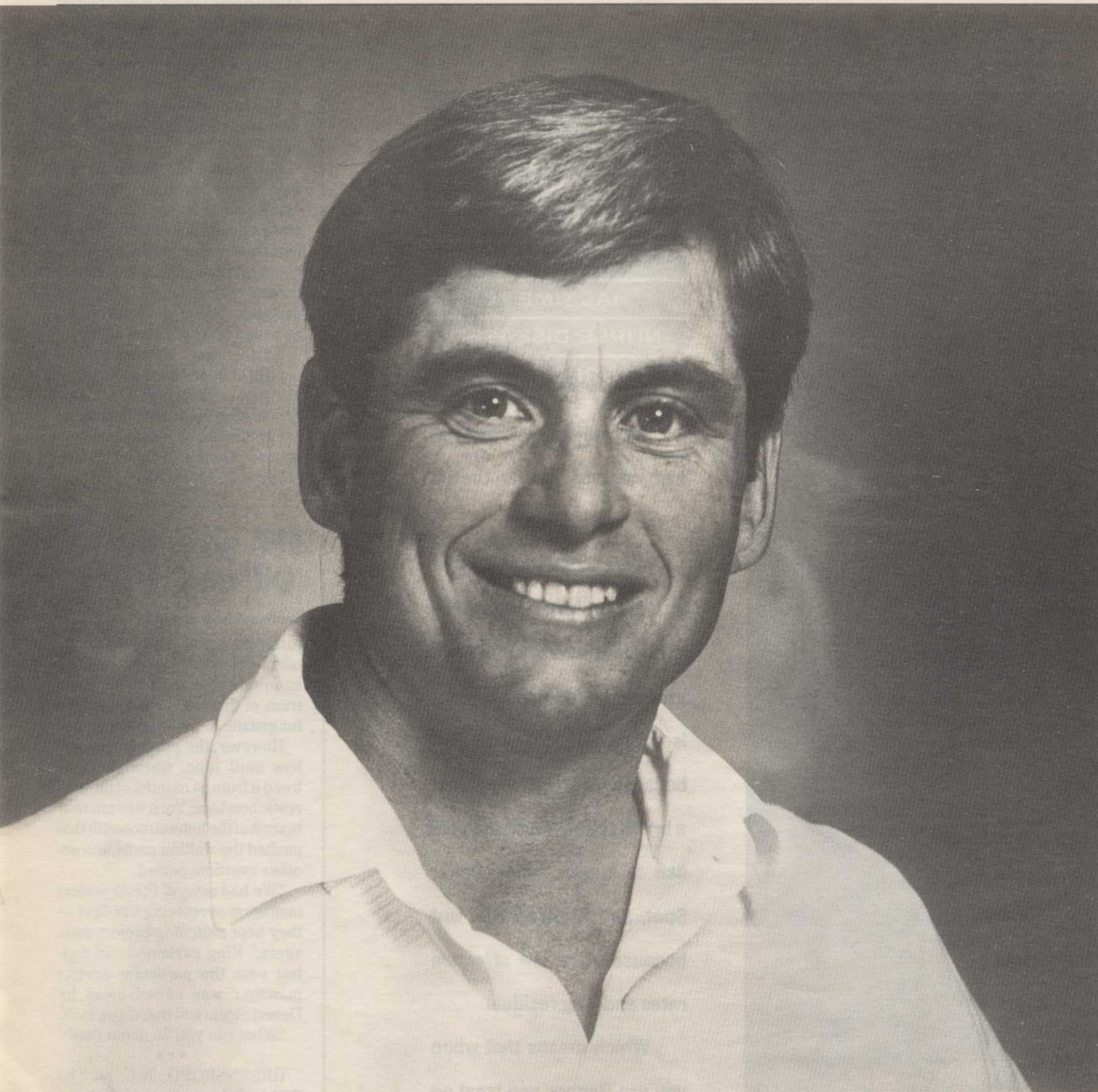
To speed up the reel-lifting and lowering cycles on fairway mowing, John Deere has developed a singled-lever lift control system for its model 3365 Professional Turf Mower.

The system controls all five reel mowers — two front reels, two outrigger reels and a mid-mounted reel. It raises them on command and immediately stops reel rotation, then lowers them with the reels rotating for aggressive mowing as soon as they reach the turf.

Electro-hydraulic controls raise and lower the outrigger reels. The reel speed is 1250 rpm.

For more information, call 1-309-765-4459.

CIRCLE# 201



ROOTS™ Concentrate was instrumental in keeping the multiple golf courses of Hershey Entertainment and Resort Community in exceptional condition throughout one of the worst droughts in the northeast. The summer of 1991 was extremely difficult for all superintendents in our area. We were on water restrictions early into the season and our ROOTS™ program was instrumental in producing the roots that carried us through this very difficult period. It's now a new year and our root system has never looked better. Thanks to ROOTS™ we feel like we always have a fighting chance!

Matthew Shaffer
Director of Golf Operations
Hershey Country Club
Hershey, PA

roots inc.

A Division of LISA Products Corp.
25 Science Park, New Haven, CT 06511

*ROOTS is a trademark of LISA Products Corporation

Please call us toll-free at 1-800-342-6173 for additional information.

CIRCLE# 142

Determining soil moisture

Automata, Inc. of Grass Valley, Calif., has introduced its new Aqua-Tel soil moisture sensor capable of a distributed measurement averaged over 30 inches (Model Aqua-Tel 1), thus replacing several one-point sensors needed for averaging soil moisture.

The distributed measurement allowed by Aqua-Tel, as opposed to one-point measurements, is designed to improve the chance of getting a reading representative of the growing area.

For more information, contact Automata at 916-273-0380.

CIRCLE# 208

Power screens

GLENDORA, Calif. — Power Screens, a new graphics interface package for use with Maxi System V computer controllers, has been introduced by the Golf Division of Rain Bird Sales, Inc.

The new program offers direct access to key screens, increased visibility of databases via windows and a full selection of interactive time- and labor-saving features.

The simultaneous multi-station satellite control is designed to increase watering flexibility while reducing system operating time. A mouse is also available.

For more information, call 1-818-963-9311.

CIRCLE# 209

Toro on the road

The Workman currently stars in a five-month, cross-country tour designed to showcase Toro's new multi-purpose vehicle.

The Toro Roadeo, which kicked off in mid-July, features onsite video orientations, vehicle/accessory demonstrations, test drives, and question-and-answer sessions.

The Workman features an extra large, full-size bed or split cargo system designed to haul 27 percent more bulk and 25 percent more weight than what users were previously used to.

As with all Toro products, the new work vehicle will be backed by the firm's 48-Hour Delivery Program, in which any part not immediately available from Toro distributors can be delivered within 48 hours anywhere in the contiguous United States.

For more information on the Workman, the Roadeo or other Toro products, call 612-887-8350.

CIRCLE# 210

Ditch n' Stitch

The lightweight, self-contained TC-4 Stitcher, new from Vermeer Manufacturing Inc., restores narrow trenches and reduces "settling" problems. It combines the proven compaction aid of vibratory force with a rugged static compacting wheel for more positive restoration results.

The all-hydraulic Stitcher applies compaction at any level down to 26 inches.

Call 1-515-628-3141 for more information.

CIRCLE# 207



The F1098 soft-side sweeper from Kubota

Easy clean-up

COMPTON, Calif. — Kubota Tractor Corporation recently unveiled its new F1098, an economy soft-sided enclosure for F Series front mowers with two-post ROPS.

With replaceable reinforced vinyl sides with Velcro edging standard, the F1098 can be easily removed for warm weather use. The F1098 is also equipped with tapered, full-length windshield safety glass and single-speed electric wiper.

For more information, call 1-213-444-7000.

CIRCLE# 206

BEFORE YOU BUY JUST ANY BENTGRASS, GO BY THE BOOK.



Phone 1-800-547-0255 today for your complimentary copy of the Penn Pals catalogue. You'll see why Penncross, Penneagle, PennLinks and Pennway blend set the standard for bentgrass on golf courses.

Tee-2-Green Corp.

PO Box 250, Hubbard, OR 97032

FAX 503-981-5626

1-800-547-0255

CIRCLE# 149