

This may be the most beautiful golf car you've ever seen.



She's been around awhile. Up and down countless hills. Carelessly smashed and violently thrashed. Stuck, struck, rocked, rolled, bumped, bruised, used and abused.

Yes, she's worn. But worn out? Not yet.

That's because she's a Yamaha. And the beauty of that distinction? She's a tougher car—built with tougher standards. So Yamaha cars, gas and electric, outperform and outlast all others. On your course and your bottom line.

So if you're not driving a Yamaha fleet, you're not driving the kind of revenues you could be. And that's trouble. But doing something about it is no trouble at all. Just give us a call at 1-800-447-4700. We'll show you some real beauties.

YAMAHA USA
Better in the long run.



**Get from tee to green
in one shot.....**

.....with new DIMENSION[®] turf herbicide.



Exceptional turf safety makes weed control better by a long shot.

Apply Dimension with confidence on a wide variety of turfgrasses.

With new Dimension[®] turf herbicide, you can go anywhere on the golf course and expect excellent turf tolerance. You can apply Dimension on many warm- and cool-season turfgrasses—even on creeping bentgrass.

When used according to label directions, Dimension will not cause discoloration or root injury. It also offers excellent overlap safety. And turf treated with Dimension will not be subject to foliar burn. In addition, Dimension won't harm adjacent ornamentals, trees or shrubs.

Get better control with less herbicide.

Break-through chemistry in Dimension turf herbicide gives you long-lasting control of a broad spectrum of weeds, including crabgrass, spurge and oxalis. Yet, you don't have to put down as much herbicide as you would with other preemergence products.

That means there's less material to mix. And it's compatible with all common herbicides and fertilizers.

Preemergence and early post-emergence crabgrass control improves application flexibility.

Along with *broad-spectrum* control, Dimension lets you time your applications for *optimum* control. The

advanced chemistry in Dimension gives you both pre-emergence and early postemergence control of crabgrass. That means you can now target goosegrass and other summer annuals, without worrying about already emerging crabgrass.* No other turf herbicide gives you so much flexibility during your busy spring season.

Permits fall overseeding.

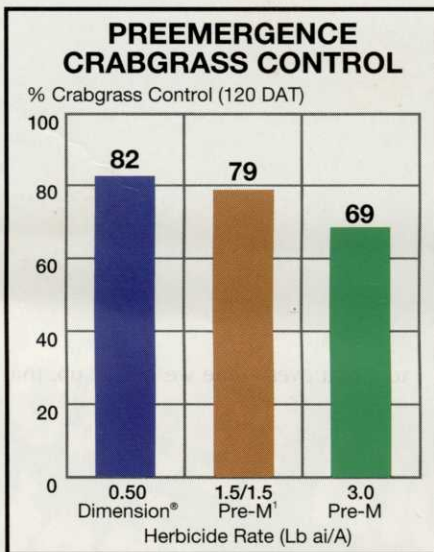
With Dimension turf herbicide, you can conduct normal fall overseeding three months after an application. So you no longer need to choose between long-lasting control and overseeding safety.

Not moisture dependent.

Dimension is less affected by moisture than many preemergence products. Therefore, it will continue to provide control under excessive rainfall conditions.

If you need effective weed control, but don't want to sacrifice turf safety, give Dimension a shot. Contact your agent for Dimension and ask about a trial. Or, for more information call:

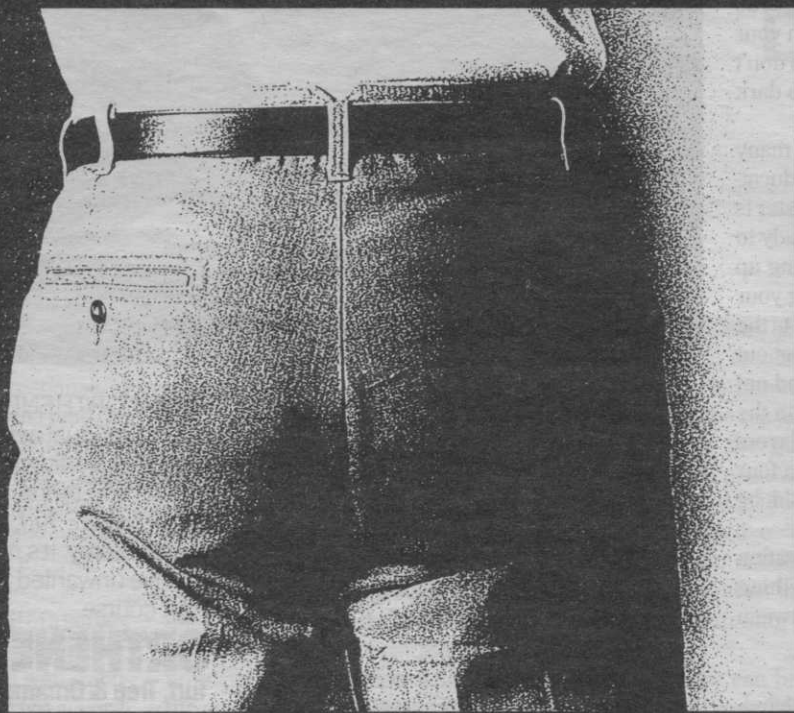
1-800-323-1421



Source: Academic and Monsanto data from Southeastern U.S. (1989-90 summary)


DIMENSION[®]
Turf Herbicide
by Monsanto

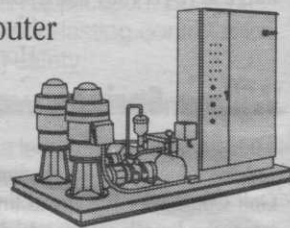
USING OUR VARIABLE SPEED PUMP STATION CAN HELP YOU SAVE VITAL PARTS.



Let's face it, in this business it pays to be backed by an industry leader. Because when your pump system goes on line, so does your reputation. And Flowtronex can help you keep both your golf course and your reputation intact with our incredibly reliable, power-saving pump station.

And how do we do all this? With an engineering breakthrough called Smoothflow™. Developed in 1986 by our team of engineers, Smoothflow is a sophisticated computer

software program that automatically monitors and controls our pump



station. Which means you no longer have a need for a pressure control valve. And because of this precise control, our Flowtronex variable speed pump stations (VSPS™) have made pressure spikes and pump-related line breaks nearly extinct on our more than 200 golf course installations.

Smoothflow software also helps budgets by slashing energy use 15 to 50% when compared to conventional pump stations using control valves. This is one of the many reasons our VSPS is the industry's most popular. In fact, superintendents have bought twice as many variable speed systems from us as all our competitors combined.

So if you're in the market for a reliable, power-saving pump station, call Flowtronex International. We've got quite a track record for standing behind our customers. And their bottom lines.

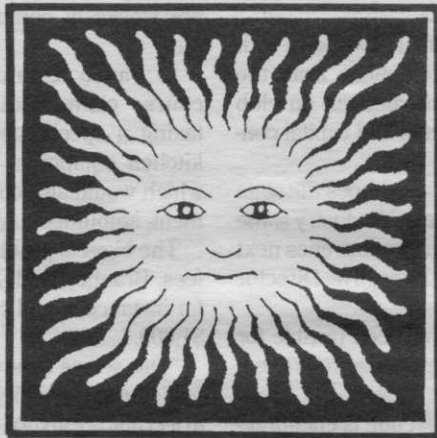
For more information, call **1-800-537-8778** or **903-595-4785**. Or write Flowtronex International, P.O. Box 7095, Tyler, Texas 75711.



FLOWTRONEX
International

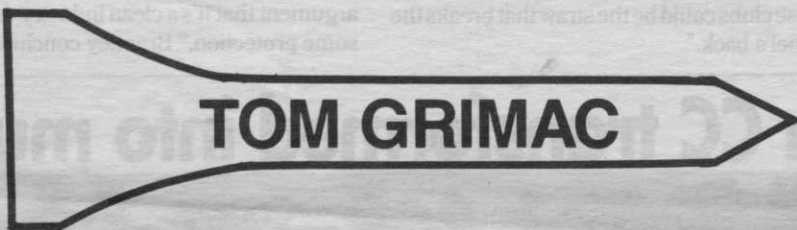
SUMMER

**SURF
SIDE**®



**WETTING
AGENT**

PATCH



**TAVISTOCK COUNTRY CLUB
HADDONFIELD, NJ**

Our control of SUMMER PATCH in the last two years has been near perfect . . . we had a few spots on one green this season (1990).

For the New Jersey area you must start April 1st with 4-oz/M of BANNER and 2 to 3 quarts of SURF-SIDE 37 per green. Our greens are 60% bent and 30% poa annua . . . they average 5 to 7000 sq. ft. We apply monthly for a total of 4 treatments. We mix on site in a 7 gal. bucket and use a siphon hose proportioner. It takes about ten minutes to do a green . . . we don't water-in the treatment. IF YOU HAVE NOT BEEN ON A PREVENTATIVE PROGRAM and develop SUMMER PATCH we'd suggest using a 4 to 8-oz/M DUPONT 1991 plus a minimum of 1/2 gallon SURF-SIDE 37 per acre, watered-in.

Our middle-of-the-month spray program varies, however, we use a minimum of 1/2 gallon of SURF-SIDE 37 per acre with our tank mix which could include any of the following: Bayleton, Banol, Dacthal, 26019, Prograss.



SUPERINTENDENTS MUST ADAPT RATES TO INDIVIDUAL GOLF COURSE CONDITIONS

Golf Course Management (AD) / April 1982

"80% to 85% reduction in syringing in the past 10 years has meant major water and labor savings."

DURING 1980 I treated one green with Surf-Side to learn something about the use of surfactants. We syringed the treated green a couple of times during the season, whereas, the rest of the greens required over 50 days of syringing — that one green was incredible!
DURING 1981 We treated all the greens and only had to syringe a handful of times, maybe a dozen times all summer, and most of that on the high spots.

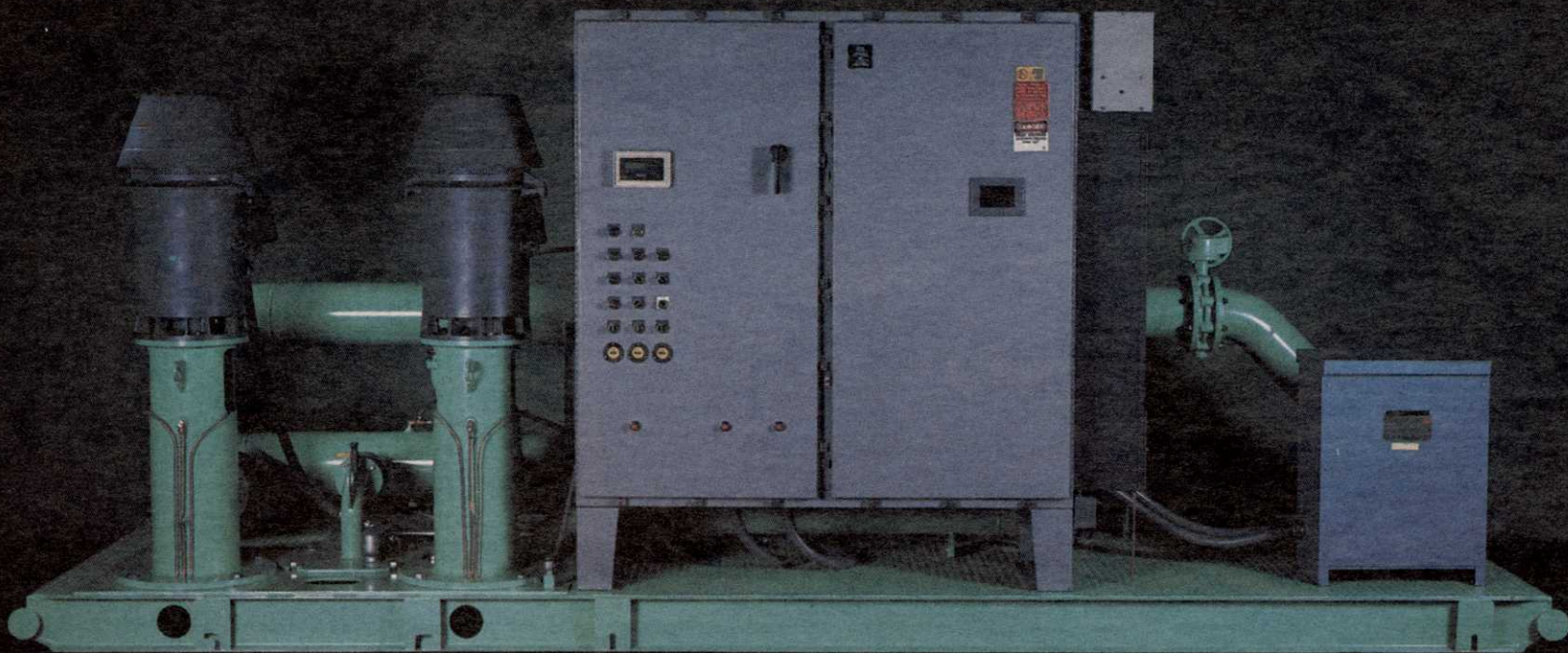
215-836-4992

SURF-SIDE DOESN'T BURN, DISCOLOR, OR ROOT PRUNE

ZAP! DEFOAMER

**MONTCO PRODUCTS CORPORATION
BOX 404
AMBLER, PA 19002**

BLEND 37



VARIABLE FREQUENCY DRIVE PUMP CONTROL

From the Innovative Leader in Prefabricated Water Pumping System Design

Pumping Systems, Inc. manufactures custom made prefabricated water pumping systems that provide maximum efficiency and low operating cost exclusively for turf grass managers. Extensive research has been conducted by PSI engineers over the past seven years to seek improved water pumping techniques including the design and construction of Variable Frequency Drive (VFD) controlled pumping systems. Since 1988, PSI has delivered VFD systems to turf grass irrigation projects across the United States.

Today, PSI continues this research and development effort in order to provide the most reliable systems available. Some standard features include: U.S. manufactured, state-of-the-art VFD; custom designed computer control software; dehumidified air cooler for the control panel; power filter; and system capacity relief valve. These features ensure the durability, reliability and operator confidence required for today's turf irrigation pumping systems.

PSI has a factory trained national service network. For prompt service or more information about the finest turf irrigation pumping systems available, contact your nearest dealer or:

Pumping Systems, Inc.

10717 Harry Hines Blvd. Dallas, Texas 75220 (214) 357-1320
Toll-free (800) 527-0539 FAX (214) 357-5861





Until now, most utility trucks have been better known for carrying repair bills than materials. Our new line of four utility trucks—built Jacobsen tough from end to end—changes all that.

For example, the 2315 has a durable 23.5 liquid-cooled diesel, 5-speed transmission with reverse and heavy-duty automotive-type clutch, creating a new standard of dependability.

The 2315 packs a 1,500 lb payload. Unlike other utility trucks, it comes complete with heavy-duty hydraulic dump box, removable side panels and tailgate, implement PTO, lights, full hydraulics and complete instrumentation *standard*.



Our rugged line also includes the 20 hp gas model 2015 and the 1,000 lb payload, gas powered 810 Express and electric 610 Express. For maximum versatility and productivity, the 2315 and 2015 can be outfitted with sprayer, top dresser, aerator and spreader attachments. If you already have attachments, our universal mounting kit lets you use them on either truck. To see them in action, call your Jacobsen distributor for a demonstration today.

JACOBSEN
TEXTRON

Jacobsen Division of Textron, Inc.

THE SHARPEST THINKING ON THE

**BUILT BECAUSE OTHER
UTILITY TRUCKS JUST DON'T
GO FAR ENOUGH.**