



The Most Advanced 4-Cycle Engine In The Industry Comes In This Familiar Package.

E-Z-GO has revolutionized the golf car industry. Again. We put the most advanced 4-cycle engine in the industry into our gas golf cars. It's a 295 cc, twin cylinder overhead cam engine that delivers 8.5 rated hp. And no other golf car on the market has it.

Twin cylinders and a counter rotating balance shaft deliver a smoother,

quieter ride than any single cylinder engine available. And give you more usable torque for climbing hills.

The forced-air cooling system provides cooler engine operation. And the pressure-fed filtered oil system is more efficient in engine lubrication.

Less engine wear. Low maintenance. And long service life. No other en-

gine in the golf car industry can deliver the benefits this one can.

Even, powerful acceleration. Trademark smooth ride. Precision performance. Unmatched efficiency.

Your players won't be able to resist the added comfort. You won't be able to resist the added value.

Just call 1-800-241-5855 to find

your nearest E-Z-GO Golf Car representative. Then test drive this car. And you'll find your new fleet.

EZGO

Location courtesy of Marriott's® Seaview Resort.
© 1991 E-Z-GO Division of Textron, Inc.



Gold Canyon Golf Club and Resort

THE THREE BEST DRIVES IN GOLF TODAY.

For nearly two decades, Melex golf cars have been out-driving the competition, in comfort as well as performance. Now the Melex line is a threesome, making Melex the natural choice for any course.

At the top of the line is the Model 412. Its sleek aerodynamic design gives it sportscar-like styling, while a state-of-the-art speed control system allows the motor to draw only the power it needs at any given speed. The result is a far smoother ride, 25% more range on a single charge, and extended battery life.

The Model 252 and the 3-wheel 152 have

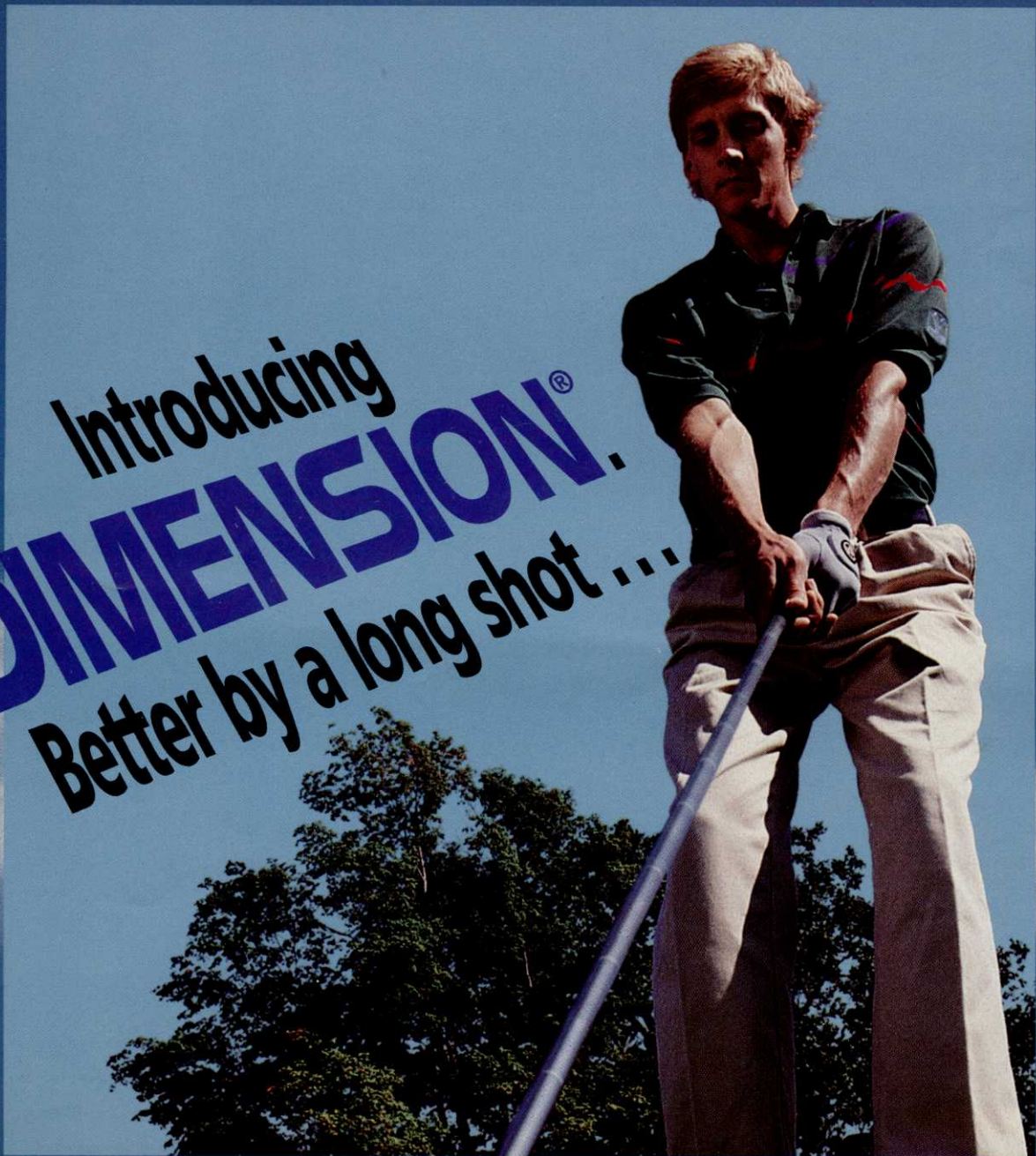
proven themselves to be reliable drives for many thousands of golfers. Both models feature a brake system that's virtually maintenance-free, an efficient, economical electrical system, and super-strong front suspension.

All Melex golf cars offer the competition's "luxury options" as standard features. These are the little touches that keep your golfers happy. Best of all, Melex golf cars are built to drive for distance. They're a lasting investment, year after year.

MELEX
We're Going The Distance.

Melex USA, Inc., 1221 Front Street, Raleigh, NC 27609, 919/828-7645, Toll Free Outside NC 1-800-334-8665, Telex 825868, FAX 919/834-7290

Introducing
DIMENSION[®]
Better by a long shot . . .



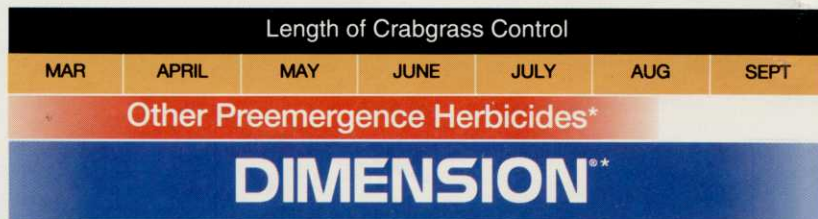
at hitting crabgrass
With season-long control.

Control Crabgrass in These Stages **



Break-through chemistry provides unprecedented control with one application.

Only DIMENSION® turf herbicide gives you true season-long control of crabgrass—with just one application. New break-through chemistry keeps Dimension working, month after month.



That means you can always expect great-looking turf—even late in the season. So you won't have to waste time re-treating because of breakdowns in residual. Nor will you risk discoloration or thinning of turf due to postemergent herbicides.

Preemergence and postemergence crabgrass control in one product.

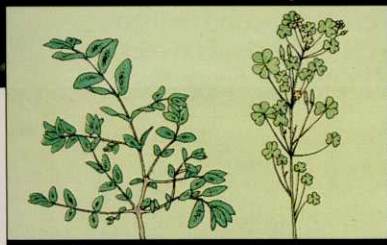
The advanced chemistry in Dimension also introduces both preemergence and post-emergence activity in one product. No other turf herbicide gives you so much flexibility.

This wide application window lets you schedule treatments with Dimension around other tasks such as spring cleanup, trimming and aerating. It also allows you to delay crabgrass treatments to optimize control of goosegrass and summer annuals.



Foxtail

Goosegrass



Spurge

Oxalis

Controls more than crabgrass.

Dimension herbicide doesn't stop with crabgrass. Its broad-spectrum activity targets a variety of annual grasses and broadleaf weeds. This control includes foxtail, goosegrass, spurge and oxalis.



Permits fall overseeding.

The break-through chemistry used to formulate Dimension gives you yet another advantage. You can conduct normal fall overseeding three months after an application. Dimension eliminates the need to choose between season-long control and overseeding safety.

Apply Dimension with confidence.

You can apply this unique, new herbicide over a variety of turfgrass species without fear of discoloration or root injury. A wide range of cool- and warm-season grasses have shown excellent tolerance to Dimension. You can even use Dimension on bentgrass without injury. In addition, Dimension won't harm adjacent ornamentals, trees or shrubs when used as directed.



DIMENSION[®]
Turf Herbicide

by **Monsanto**

*Based on a single application.

**For control of tillered crabgrass, tank mix Dimension with Acclaim[®] or MSMA.

Join the professionals who get more beautiful turf with just one shot of Dimension.

**Wes Mathany, CGCS
Superintendent
Glen Echo
Country Club
St. Louis, MO**



"I get judged on the quality of my turf. If I can cut the weed population to 10 percent or less, it makes me look better. With Dimension, I'm getting that control and the turf safety I need."

**Tom Werner, CGCS
Superintendent
Colonial Country Club
Fort Worth, TX**



"The best thing about Dimension is if you get your application down late, you're still going to get control of crabgrass. If we have Monday events and can't spray and then the weather turns on us, or we wait another few weeks, we still get control in one application."

**Randy Brehmer, CGCS
Superintendent
Bear Slide Golf Club
Cicero, IN**



"Postemergence crabgrass control is a very 'iffy' situation. The advantage of a material that can be applied both pre- and postemergence is big. Dimension does that. We saw excellent results with no detrimental affect to desirable turf in postemergence applications."

**Don Brown, CGCS
Superintendent
White Manor
Country Club
Malvern, PA**



"I like Dimension because of the flexibility of application. Timing isn't quite as critical because it can work pre- or postemergence. With other products, we spray around April 1 and we're back a second or third time. With Dimension, we can put it down in mid-May and get good results in just one application."

Call Monsanto toll-free 1-800-323-1421



DIMENSION[®]
Turf Herbicide
by **Monsanto**

The toughest thing to emerge since crabgrass.

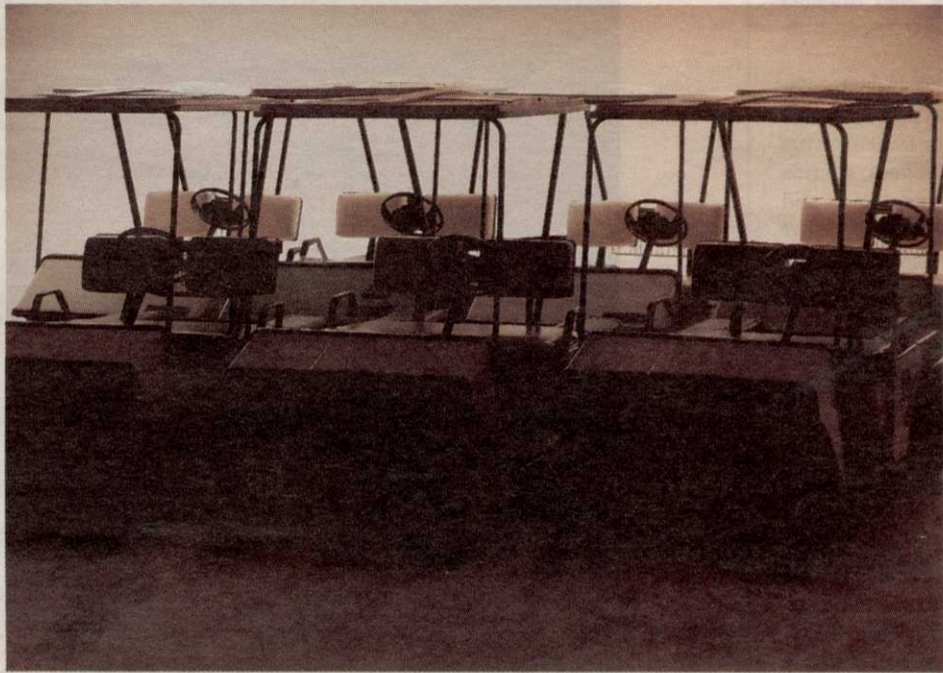
ALWAYS READ AND FOLLOW LABEL DIRECTIONS FOR DIMENSION TURF HERBICIDE.

© Monsanto Company 1991 Dimension[®] is a registered trademark of Monsanto Company.

¹Acclaim is a trademark of Hoechst AG.

DMP-1-157

Chances are you have 50 losers working at your course.



Every manufacturer claims to make the best golf car. But only Yamaha can prove they make a winner. In completely independent tests, Yamaha emerged as a clear victor when pitted against Club Car and E-Z-Go*. It was a Yamaha car that rated first in four out of four tests that measured both electric car and gas car economy. The lowest noise output? Also a Yamaha.

Cleanest-burning gas car? Yamaha again.

For a detailed look at these test results, call 1-800-447-4700, or return the reply card. And if you'd like to know how Yamaha performs outside the test arena, ask for your free copy of our "Winning the Golf Car Game," video. You'll get a first-hand look at course operators all over the country telling you what they already know.

If you're not running a Yamaha fleet, you're losing out.

YAMAHA USA
Better in the long run.

*Tests conducted by Otto Labs, 1991. Test results available.

CIRCLE #128

GOLF COURSE NEWS

THE NEWSPAPER FOR THE GOLF COURSE INDUSTRY

A UNITED PUBLICATION
VOLUME 3, NUMBER 8
AUGUST 1991

INSIDE

Nuisance water may be godsend

University of Nebraska researchers are studying ways to use untreated runoff water 3

User-friendly

EPA official urges environmentally safe golf course projects 8

'Toxo-terrorists'

Exposing fancy and unveiling fact are musts of the future for superintendents 13-14

Pesticide law

California superintendents come under restrictions of old agriculture regulations 13-14

2nd quarter 1991 course update

Type	Open		1990 Yrend	Under Construction		1990 Yrend
	1991 YTD	1990 YTD		1991 YTD	1990 YTD	
Daily Fee	48	—	166	—	340	—
Municipal	13	—	37	—	88	—
Private	27	—	86	—	189	—
N/A	—	—	—	—	3	—
Totals	88	82	289	620	511	560

Source: NGF

COURSE MAINTENANCE

Audubon, courses team up to save wildlife 15
Wildlife at refuge at John's Island West 15
Greg Graham always tournament-ready 16

COURSE DEVELOPMENT

Japanese stay active in U.S. marketplace 27
Las Vegas thrives in face of recession 27
Monthly update: Planned, approved courses 36-37

COURSE MANAGEMENT

Management companies do it all 41
Owners association gains members 41
Kemper signs pact 41

SUPPLIER BUSINESS

Bermudagrass test results released 45
Marketing conference speakers announced 46
Turfseed field days draw crowds 47

The firms that run the courses, pages 41-43
Management Companies

High Court ruling said 'scary'

By Peter Blais

The recent Supreme Court ruling freeing local governments to impose pesticide regulations that conflict with federal law could severely restrict the use of golf course chemicals, according to a Golf Course Superintendents Association of America official.

"It scares the hell out of me. It's

another step toward more regulations," said Charles Passios, government liaison to the GCSAA board of directors.

"It means superintendents are going to have to be more pro-active than ever, participating in the process and taking a lead role to make sure our concerns are heard when towns want to pass regulations."

In the case of the Town of Casey, Wis. v. Ralph Mortimer et al, the court ruled unanimously June 21 that the language of the Federal Insecticide Fungicide and Rodenticide Act does not allow it to pre-empt locally passed regulations.

The decision overturned a Wisconsin Supreme Court ruling that FIFRA

Continued on page 23



Major changes expected in revisions of wetlands laws

By Mark Leslie

Wetlands preservation regulations that have handicapped golf course developers and created long, expensive waits for approvals are being rewritten — and loosened extensively — on two fronts.

A revision of the much-maligned federal wetlands delineation manual — used by the Army Corps of Engineers, Environmental Protection

Agency, U.S. Fish and Wildlife Service, and Soil Conservation Service since 1989 — is under review and is said to more narrowly define what constitutes a wetland.

Further up Pennsylvania Avenue, congressmen have answered the call of voters and drafted legislation to correct deficiencies they see in the wetlands protection system.

Some conservationists are

angry. Linda Winter, director of wetlands programs for the Izaak Walton League, said a scientifically sound definition is "being thrown out and ignored for political reasons."

One EPA ecologist resigned and another asked that his name be dropped from the credits of the revision.

But others are looking forward to changes.

Continued on page 28

First facilities open for handicapped

By Mark Leslie

Two golf facilities built especially for the physically challenged will open within the next month, marking milestones for the country's millions of handicapped people.

In Akron, Ohio, Edwin Shaw Hospital is completing the first course in the country designed especially for handicapped golfers. Dedi

Continued on page 38

End of drought won't solve Calif. woes

By Peter Blais

RIVERSIDE, Calif. — Water will continue to be in short supply for many years in California because of the six-year drought, increased demand from a growing population and environmen-

tal concerns, according to a Southern California water expert.

"We are going to see changes in our landscapes and maybe in our lifestyles if the shortages are severe enough and long enough,"

Coachella Valley Water District water management specialist Dave Harbison said during a recent water management seminar sponsored by the University of California, Riverside Cooperative

Continued on page 20

TO: JOE BLACK
WESTERN GOLF PROPERTIES
7711 E. GREENWAY RD.
SCOTTSDALE, AZ 85260

The most important people in the golf course industry make our front page every month.



People like Joe Black, President of Western Golf Properties, Inc. ...

consultants and managers of more than a dozen courses from coast to coast.

Former President of the PGA, Chairman of the 1983 Ryder Cup Matches and 1979 & 1980 PGA Championship, Black calls *Golf Course News* a

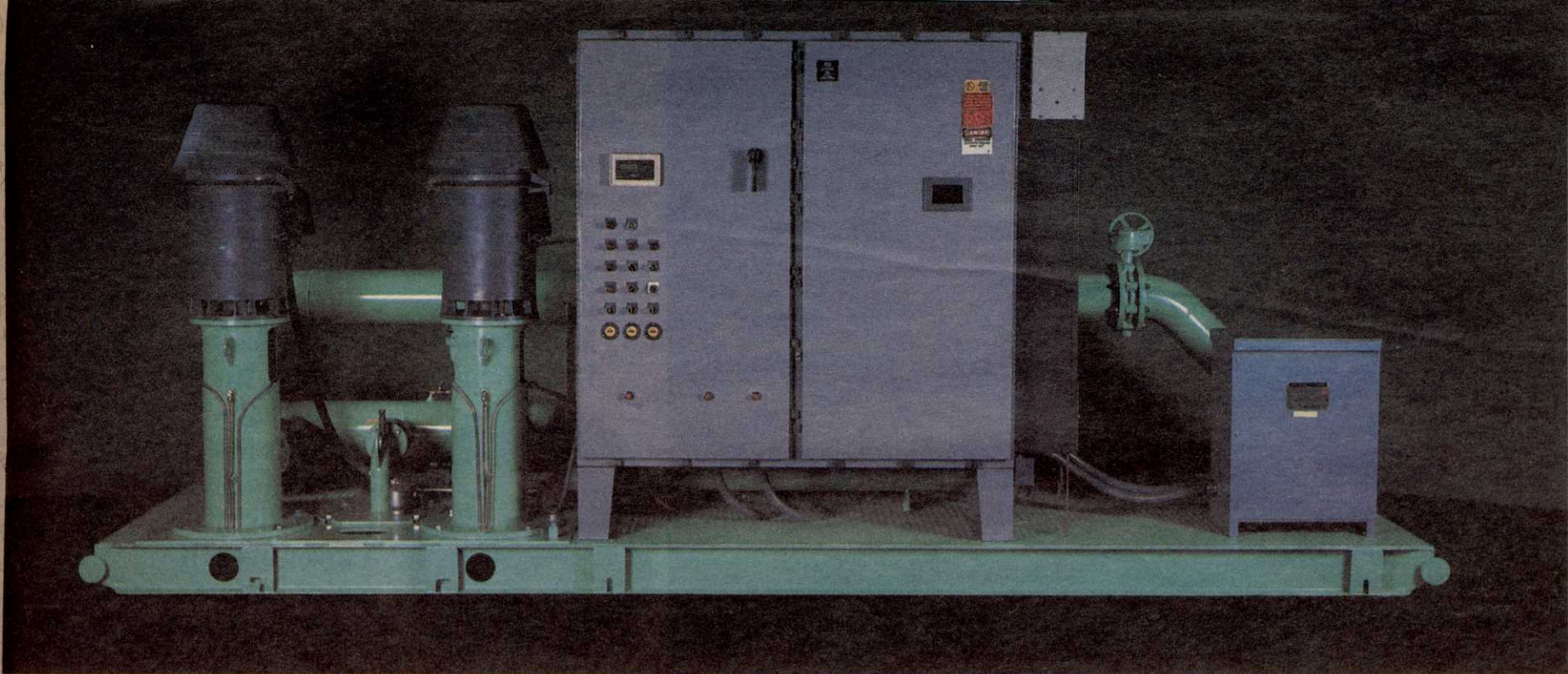
"most informative golf course development publication." "It covers subjects that are current, important and impact the industry," he contends.

If you want to reach 20,000 of the most important people in golf ... decision makers at every course in America, call *Golf Course News* today.

It's "addressed" for success.

GOLF COURSE NEWS

7901 Fourth Street North
St. Petersburg, FL 33702
(813) 576-7077 Fax (813) 579-9788



VARIABLE FREQUENCY DRIVE PUMP CONTROL

From the Innovative Leader in Prefabricated Water Pumping System Design

Pumping Systems, Inc. manufactures custom made prefabricated water pumping systems that provide maximum efficiency and low operating cost exclusively for turf grass managers. Extensive research has been conducted by PSI engineers over the past seven years to seek improved water pumping techniques including the design and construction of Variable Frequency Drive (VFD) controlled pumping systems. Since 1988, PSI has delivered VFD systems to turf grass irrigation projects across the United States.

Today, PSI continues this research and development effort in order to provide the most reliable systems available. Some standard features include: U.S. manufactured, state-of-the-art VFD; custom designed computer control software; dehumidified air cooler for the control panel; power filter; and system capacity relief valve. These features ensure the durability, reliability and operator confidence required for today's turf irrigation pumping systems.

PSI has a factory trained national service network. For prompt service or more information about the finest turf irrigation pumping systems available, contact your nearest dealer or:

Pumping Systems, Inc.

10717 Harry Hines Blvd. Dallas, Texas 75220 (214) 357-1320

Toll-free (800) 527-0539 FAX (214) 357-5861



5" x 2"
Spacing

4" x 2"
Spacing

3" x 2"
Spacing

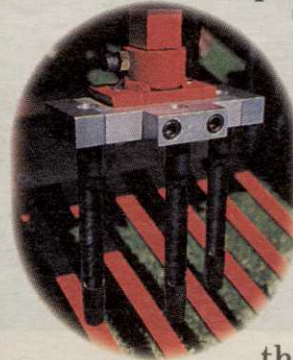
2" x 2"
Spacing

1" x 2"
Spacing



With the two new Jacobsen Aero King aerators, you get the widest selection of hole spacings on the market to handle changing aeration needs quickly and easily. Simply shift gears to select just the right pattern for the job.

Most convenient controls in the industry. Unlike competitive units, the self-propelled T1224 puts all controls at the operator's fingertips for easier operation and increased productivity.



Lower overall maintenance costs.

Our virtually unpluggable tines last up to three times longer than competitive tines. So you get more consistent hole depth throughout your course, while spending less time and money changing tines. What's more, the Aero Kings' simple, durable designs are easier and more economical to maintain than gear-driven units. They also cover more ground in an hour than competitors, giving you the best overall aerator value.



The tractor mounted PT2448, with its 48" width, is small enough for greens but big enough for fairways and tees. The PT2448 features a storage frame and casters for fast, easy hook-up to an 18+ hp tractor.

To see just how much a single aerator can do, ask your Jacobsen distributor for a demonstration today.



CIRCLE #153

**JACOBSEN
TEXTRON**

Jacobsen Division of Textron, Inc.

THE SHARPEST THINKING ON TURF.

**NOW, CHANGING HOLE PATTERNS
IS AS EASY AS 1, 2, 3, 4, 5.**