

Golf Course Marketplace

To reserve space in this section, call Simone Lewis, 813-576-7077

ADVERTISING INFO.

	2X	6X	12X
Per col. inch:	\$45.00	\$40.00	\$35.00
Add-on per 1/4":	\$11.25	\$10.00	\$8.75
Logo incl. in ad:	\$20.00	\$20.00	\$20.00

- Minimum 2-time insertion.
- Prepayment is required.

Send prepayment and ad copy to:

Golf Course News
7901 4th St. N., Ste. 311
St. Petersburg, FL 33702
813-576-7077 • Fax 813-579-9788

EMPLOYMENT

WANTED —

DOZER OPERATOR

Experienced in golf course shaping and fine grading.

Call (313) 676-8688
EOE

SHAPERS

Golf Course Contractor on West Coast is currently seeking qualified shapers for West Coast work. Applicants must have prior golf course construction experience. For consideration, send resume with salary requirement in confidence to: **P.O. Box 924, Novato, CA 94948.**

POSITIONS AVAILABLE

Experienced golf course construction supervisors & shapers needed for overseas work. Send references & resume to "Overseas Golf", 14651 Big Basin Way, Saratoga, CA, 95070 or Fax to 408-867-9680.

SYNCROFLO, INC.

National Irrigation Pumping Station Sales Manager

This position is responsible for the promotion, sales & marketing of packaged pump stations through a national distribution network. The person must have high values, be a good discerner, and a developer of a distribution network that produces. A good persuader who works competitively with intensity and is a good delegator is a strong plus. Minimum requirements include: experience calling on and promoting products through a distribution network, a good reputation in the turf industry, excellent verbal & written skills, & willingness to travel. Be willing to relocate to Atlanta, GA. Qualifications desired include a four-year degree from an accredited university, minimum of three years experience with a distributor of pumps or pump stations. Benefits include salary, bonus, car allowance, health and life insurance, professional organizations, vacation & sick pay, & ESOP stock. If you meet the above qualifications & desire to make a change, please submit resume to: **Vice President of Sales & Marketing, SyncroFlo, Inc., 6700 Best Friend Rd, Norcross, GA, 30071. Fax (404) 447-0230 or phone (404) 447-4443.**

RESUME SERVICES

PROFESSIONAL RESUME SERVICES

Successfully serving golf course professionals since 1976. Resume preparation, cover letter development. Career planning. Creative! Confidential. Immediate service avail. Call **1-800-933-7598** (24 hrs).

REAL ESTATE

TEXAS GOLF COURSES

9 & 18 holes — Statewide.
Some with extra land, dev. lots.
Descriptive list available.

TEXAS GOLF PROPERTIES

1603 Lightsey — Austin, TX 78704
512/442-7105 • Fax 512/442-1812

WANTED

Golf course operator seeks operations for lease, purchase or joint venture.

Fax (201) 842-4608

COMMERCIAL GOLF PROPERTIES
COLDWELL BANKER COMMERCIAL GOLF PROPERTIES MARKETING GROUP has been formed by the nation's largest commercial real estate brokerage to market golf courses nationwide. For information contact **Roger Garrett, 602/262-5511** or **Tom Harris, 602/262-5521.**

EDUCATION

GRAYSON COLLEGE, Dennison, TX. 2-year technical program in golf course & turf grass management. 18-hole golf course on campus. Dormitories, placement assistance, financial aid & scholarships available. Contact: **GCC, 6101 Grayson Dr., Dennison, TX 75020. (214) 465-6030, ext. 253.**

FOR SALE

QUALITY TURF GRASSES

Sod or sprigs. Meyer Z-52, Tifgreen II, Tifdwarf, Tifway. Sprig planting available.
Quail Valley Farm, Inc.
1-800-666-0007

SPRINKLER REMOTE MAINTENANCE RADIOS

Distributors over-stock SALE!!!!
New TRC-1200 Remote radio kits. Turn sprinklers on & off by pocket radio. One mile range. Controls up to 12 stations. For golf course & large commercial applications. Includes: Transmitter, Receiver, Connectors, Charger & Carrying Case. **Regular Price \$1295. Sale Special \$950.** For additional information & literature contact: **FF Sales, 3223rd St. W., Bradenton FL 34205. 813-745-2499**

MEYER Z-52 ZOYSIA SOD

Bermuda-free; forklift delivery to the Mid-Atlantic region.

OAKWOOD SOD FARM

Salisbury, MD
(301) 742-3086

POND LINERS

Buy direct from fabricator 20 & 30 mil. P.V.C. Made to order. Under 20 cents per sq. ft. Installation or supervision available. Call...

COLORADO LINING COMPANY

(303) 841-2022

MEYERS ZOYSIA SOD

Zoysia sod, sprigs, sprigging, row planting, solid sodding, strip sodding, renovations, turnkey jobs.

DOUBLE SPRINGS GRASS FARM

1-800-458-4756

PENNSYLVANIA GROWN SOD

Penncross Bentgrass — 4-way blend of Bluegrass — Bluegrass/Ryegrass blend — shipped via our trucks, forklift unloaded.

VICOR FARMS, INC.

Connoquenessing, PA 16027
(800) 842-0461

GOLF COURSE ACCESSORIES

SAVE ON PERSONALIZED FLAGS

Buy factory direct & save 40% or more on personalized flags. Flagpoles, tee markers, etc. also available. Fast personalized service guaranteed. Call toll free.



FOUR SEASONS GOLF COMPANY

P.O. Box 78011
Greensboro, NC 27427
1-800-476-7005

LASER MEASURING and SPRINKLER YARDAGE MARKERS

We do it all. Laser measure & installation (same day) of **custom metal yardage markers** for all types of sprinkler heads. Warranty included. Also tee to green measurements, granite fairway markers. Sprinkler yardage markers may be purchased separately. Contact Nick for samples & references. **Fairway Designs of Florida, 800-36-TAGIT.**

CLASSIC CULTURED MARBLE

Tee • Entrance • Direction Signs
LASER MEASURING TEE TO GREEN
LASER MEASURING TEE TO GREEN



1939 Hallam Drive
Lakeland, FL 33813
(813) 646-3351

GOLF COURSE FINANCING

MALONEY GOLF FINANCE, INC.

Arranging financing for existing 18-hole daily fee courses & for-profit country clubs with at least 3 years operating history. Contact:

Russ Maloney, President
6901 W. 63rd St., Ste. 204
Overland Park, KS 66202

913-432-9990

Fax 913-432-5759

BUSINESS OPPORTUNITIES

DISTRIBUTORS WANTED

Alabama, Georgia & Carolinas

We manufacture dyed green sand & market in 50lb. bags. Used by golf courses to cover divots & homeowners to topdress those bare spots.

Call Mike at (407) 629-6222

CITY OF BURKBURNETT, TX

Is accepting proposals for the operation & maintenance of City Golf Course. Deadline for submission is July 1, 1991. Inquiries to **John Brookman, City of Burkburnett, 501 Sheppard Rd., Burkburnett TX 76354. (817) 569-2263.**

DISTRIBUTORSHIPS AVAILABLE

Turf-Ag-Nursery-Organic based product line. Investment required — secured by inventory. Direct inquiries to:

NEEP

PO Box 608258
Orlando, FL 32860

PARTNERSHIP/MERGER

Well-equipped irrigation contractor relocating to Eastern South Carolina is seeking an experienced working partner or merger for expansion into larger scale irrigation projects. For further information, please contact Charlie at:

908-685-0653

MINIATURE GOLF COURSE

Complete 18 hole course with all hazards and markers. Manufactured by Mini-Golf, Inc. For more information, contact:

George Loughman
(219) 563-4116, ext. 50

\$60,000+ CAREER

For individual with Golf Industry Knowledge & contacts. Must be an articulate, proven sales executive with presentation & communication skills. We are a 10 year established Marketing Firm, not a franchise. \$15k investment required (No inventory!). Forward credentials to: **Joe Doyle, The Doyle Group, 2101 Rexford Road, Suite 172W, Charlotte, NC 28211.**

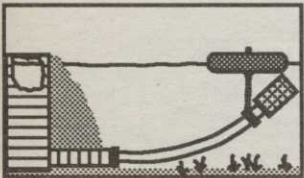
Golf Course Marketplace

To reserve space in this section, call Simone Lewis, 813-576-7077

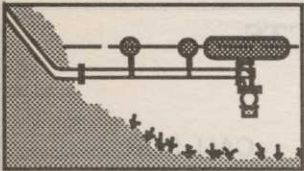
NEW LITERATURE

FLOAT-N- PRODUCTS™

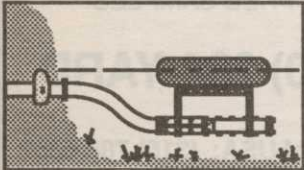
Extend the life of your pump equipment and alleviate silt build-up throughout your entire irrigation system - from intake to greens!



Float -N- Screen™
(Patented)



Float -N- Foot Valve™



Float -N- Pump™

manufactured by:
Greenscape Pump Services, Inc.
556 Coppel Road
Coppel, Texas 75019

Phone: (214) 393-0346 Fax: (214) 393-2337

CIRCLE #161

Personalized with your club name -

Golf Forms

- | | |
|---------------------------|--------------------------|
| Tournament Invitations | Pesticide Posting Sheets |
| Inventory Sheets | Equipment Logs |
| Application Forms | Business Cards |
| Gift Certificates | Stationary |
| Score Sheets | Order Forms |
| Employee Evaluation Forms | |

From: Golf Direction Associates Foxborough, MA 02035
54 North Grove Street 508-543-9822

CIRCLE #162



PAVELEC BROTHERS GOLF COURSE CONSTRUCTION CO., INC.

- ✓ New Construction
- ✓ Renovation
- ✓ Field Drainage Systems

TONY PAVELEC (201) 667-1643
EMIL PAVELEC (201) 939-6182
98 Evergreen Ave.
Nutley, NJ 07110

CIRCLE #163

Golf course design.



MIKE
YOUNG
DESIGNS

3 North Main Street • P.O. Box 289 • Watkinsville, GA 30677
Phone: (404) 769-7415 • FAX: (404) 769-8538

CIRCLE #164

2-WAY
PORTABLE
SYSTEM

**ANDERSON
INSTRUMENT
& supply co.**

\$395

2 WEEK
FREE TRIAL

INCLUDES:

- 2 Radios
- 2 Holsters
- 2 Charging Systems

MADE IN THE USA

800-333-6212

1850 Kimball Rd. S.E., Canton, OH 44707

CIRCLE #166



QUAIL VALLEY FARM INC.

"GROWERS OF QUALITY
TURF GRASSES"

- MEYER Z-52 ZOYSIA
- TIFGREEN II
- TIFDWARF
- TIFWAY
- FESCUE
- SPRIGS

7501 KANIS ROAD
LITTLE ROCK, AR 72204

(800) 666-0007

CIRCLE #168

EXCEL

BRIDGE MANUFACTURING CO.



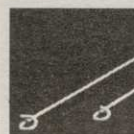
Golf Course Bridges are our specialty! We fabricate easy-to-install, pre-engineered spans and deliver them anywhere in the U.S.A. Call today for a free consultation.

800/548-0054

12001 SHOEMAKER AVENUE, SANTA FE SPRINGS, CALIFORNIA
213/944-0701 FAX 213/944-4025

CIRCLE #165

Stake Your Course-with Rope'r.



Rope off areas using the heavy duty ROPER stakes. These step down stakes are a full .370 diameter — 40% more rod than the common 3/16" stakes. Powder Coated and heat dried, with either style top — closed eye or pigtail and in long or short

lengths — the ROPER Stakes have the quality and durability for your course.

Ask Your Golf Course Distributor for
INNOVATIVE MAINTENANCE PRODUCTS



FROM *Master of the Links*

P.O. Box 52 • Lombard, IL 60148-0052
(708)627-8379 • FAX (708)627-8370

CIRCLE #167

Keep That Edge



pinhigh
reel sharpening compound

Contact Your Local Distributor or Call Us
Toll Free 1 (800) 422-4748

CIRCLE #169

New guide book details int'l golf camps and schools

Golfers seeking to improve their playing skills and those pursuing careers in golf resort or club management will find the recently released "Guide to Golf Schools and Camps" useful.

The 142-page book is arranged geographically by 41 states and 10 countries and contains detailed descriptions of 137 schools and camps — including 63 programs exclusively for junior golfers, 27 programs for adults only, 38 programs for players of all ages and nearly 30 programs geared to intermediate and advanced players.

School and camp sponsors include colleges and universities, golf clubs and resorts, golf organizations and professional golfers who have earned recognition for their playing and/or teaching skills.

The guide also contains descriptions of seven two- and four-year college programs in golf facility management; two one-week schools in golf club fitting, assembly and repair; 10 national golf organizations; and contact information for 68 international organizations.

The listings in Section One, **Schools & Camps**, contain year established, length, dates, frequency of programs, level and scope of instruction, daily schedule, class size, student-to-teacher ratio, teaching aids utilized, description of golf and resort facilities, names and credentials of instructors, tuition, deposit and refund policies, and contact information.

Most programs range from a day to a week in length and many augment classroom, practice range and on-course instruction with videotaping and other teaching aids.

Section Two, **Organizations**, describes 10 national organizations' goals, objectives, activities, annual dues and member benefits. Those wishing to learn about facilities, activities and schools worldwide will find contact information for 68 golf organizations throughout the world.

"Guide to Golf Schools & Camps" is available in book and golf stores or by sending a check for \$18.95 to ShawGuides, 625 Biltmore Way, Coral Gables, Fla. 33134 or call 305-446-8888.

Wabash Valley Mfg. releases 1991 plastisol furniture catalog

The 1991 Wabash Valley Manufacturing product catalog is now available from the manufacturer.

Wabash Valley offers a complete line of plastisol-coated furniture. Permanently bonded to steel to a thickness of 1/4-inch, it is guaranteed not to crack, peel, chip, rust, warp or rot.

The 68-page catalog showcases Wabash Valley's product line in color with descriptions and prices listed. The line includes picnic tables, benches, litter receptacles and bicycle loops.

New for 1991 is the Contemporary Series of benches, available in wire or diamond mesh and three different lengths, ideal for public seating. New diamond-wire mesh planters and ash urns are also available.

To receive the free catalog or obtain additional information regarding the Wabash line, call 800-253-8619 or write Wabash Valley, P.O. Box 5, State Rd. 15 N., Silver Lake, Ind. 46982.

May

4-6 — *Turf & Ornamental Communicators annual meeting in St. Louis.* Contact TOCA President Jerry Roche at 216-243-8100.

15 - *North Carolina Turf and Landscape Field Day at North Carolina State University in Raleigh.* Contact R.H. White at 919-737-7615.

20-21 — *Pacific Rim Japan-America Resort and Golf Executive Conference in Hawaii.* For information call Executive Conferences at 800-873-9137.

21 - *GCSANJ monthly meeting at Metedeconk National GC.* Contact Steve Cadenelli at 201-928-4639.

24 - *Soil modifications seminar in Montreal.* Contact Canadian GSA at 416-602-TURF.

June

12 - *Lofts Field Day in Martinsville, N.J.* Contact Karna Godridge at 908-359-1100.

19 - *Lofts Field Day in Wilmington, Ohio.* Contact Karna Godridge at 908-359-1100.

21 - *Central Florida Chapter FGCSA Turf Field Day at Hunters Creek GC.* Contact 407-275-9287.

24-26 - *Golf course development and financing seminar in Las Vegas.* Contact Institute for International Research, Inc. at 212-826-1260.

27 - *Practical water conservation techniques seminar in Riverside, Calif.* Contact Hartley Bennett at 602-684-7308.

July

28-30 — *International Lawn, Garden and Power Equipment Expo 91 in Louisville, Ky.* Contact Expo Hot Line at 800-558-8767.

31 — *Griffin Field Day, Georgia Experiment Station in Griffin, Ga.* Contact Georgia GCSA at 404-769-4076.

August

7 — *Illinois Landscape Contractors Association Summer Field Day in St. Charles, Ill.* Contact ILCA at 708-932-8443.

8 — *MNLA Summer Meeting and Trade Show in St. Paul, Minn.* Contact Minnesota Nursery and Landscape Association at 612-633-4987.

16-18 — *TAN-MISSLARK Regional Nursery and Garden Supply Show in Dallas.* Contact Texas Association of Nurserymen at 512-280-5182.

22 - *Michigan State University Turfgrass Field Day, Trade Show and Equipment Auction in East Lansing.* Contact 517-353-2033.

25-27 — *National Lawn, Garden and Power Equipment Showcase in Toronto, Ontario, Canada.* Contact show producers at 705-741-2536.

September

1-3 — *International Garden Trade Fair in Cologne, Germany.* Contact show producers at 212-974-8836.

3-5 - *IoG Sports & Leisure World Trade Exhibition in Peterborough, England.* Telephone 0908 311856.

13-15 — *Florida Nursery and Allied Trades Show in Orlando, Fla.* Contact FNGA at 407-345-8137.

15-17 — *GMA Show-International Professional Lawn, Garden and Outdoor Power Equipment Exhibition in Kempton Park, United Kingdom.* Contact Andry Montgomery Group at 502-473-1992.

16-19 — *Northwest Turfgrass Conference and Exhibition in Couer d'Alene, Idaho.* Contact NTA at 206-754-0825.

25 — *25th Annual CGSA Fall Field Day at*

Continued on page 61

Golf Course Marketplace

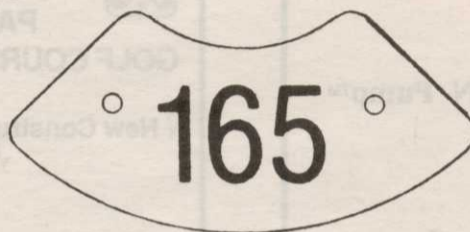
To reserve space in this section, call Simone Lewis, 813-576-7077

MORE GOLFERS LOOK DOWN ON OUR PRODUCTS TO IMPROVE THEIR SCORE!

Engraved Yardage Labels

For Sprinkler Heads

- BRIGHT COLORS
- FASTENERS INCLUDED



CALL FOR FREE SAMPLES!

(800) 284-YARD

Out of USA: (316) 788-6857
Fax: (316) 264-7164

YARD EDGE GOLF COMPANY

P.O. Box 13159, Wichita, KS 67213

CIRCLE #170



**PIPE LOCATOR
THE LOCAT™
INEXPENSIVE**

Locates, traces underground pipes, including drain pipes, made of PVC, ABS, steel and cement. Finds sprinklers, valves and clogs.

Used by Hundreds of Golf Courses

Satisfaction Guaranteed

Bloch & Company
Box 18058, Cleveland, OH 44118
(216) 371-0979

CIRCLE #171

**KENOVA CONSTRUCTION CORPORATION
GOLF COURSE BUILDERS**

ANY SCOPE
ANYWHERE
ANYTIME



QUALITY
PERFORMANCE
INTEGRITY

Call for information/brochure.
PHONE: 407-848-0194
FAX: 407-848-0968

GENERAL CONTRACTOR
WEST PALM BEACH, FL

CIRCLE #172

Poa Free

Pennsylvania Grown **PENNCROSS**

BENTGRASS SOD

CALL 800-USA-TURF (872-8873) or 717-898-5000

CIRCLE #173

"NOVATEE"

The **NOVATEE** is a combination of specially manufactured **synthetic grass** of commercial quality. Its patented design, featuring top dressing imbedded between the fibers, allows golfers to tee up just like on natural grass.

The **NOVATEE** is the state-of-the-art synthetic tee surface for all courses & driving ranges.

Dealer inquiries requested. PO/CP 533 CSL
Montreal, PQ., Can. H4V 2Z1
514/486-1696
Fax 514/486-9927

SyntenniCo Inc.

CIRCLE #174

GOLF COURSE RADIOS

Motorola

2 WAY RADIO
PORTABLE FM
POCKET SIZE
GOLF COURSE ORGANIZATION

\$235.00

Radius Mail Order Pricing...
for details call Jim Martin (800) 523-0625

2 YR. WARRANTY FREE DEMO

WAREHOUSE RADIO
3038 State, Columbus, IN 47201

POCKET SIZE 12 OZ.

CIRCLE #175

Nationwide delivery • Install in less than two hours

Golf Course Bridges!

1-800-328-2047

Thousands in use. Built to last.
Sponsor Member

Route 5, Box 178, Alexandria, MN 56308 • (612) 852-7500

CIRCLE #176

Continued from page 60

Carling Lake Golf & CC in Lachute, Quebec, Canada. Contact Canadian Golf Superintendents Association at 800-387-1056.

October

7 — *Allied Association Meeting at St. Ives CC and Bend CC.* Contact Georgia GCSA at 404-769-4076.

24-26 — *Summit 91 Women in Golf in Daytona Beach, Fla.* Contact LPGA at 9040254-8800.

November

3-5 — *Georgia GCSA Annual Meeting at Jekyll Island Club Resort.* Contact Georgia GCSA at 404-769-4076.

5-6 — *Indiana State Lawn Care Association Conference and Show in Indianapolis.* Contact ISLCA at 317-575-9010.

5-8 — *New York State Turfgrass Association Turf and Grounds Exposition in Rochester, N.Y.* Contact NYSTA at 800-873-TURF.

7-10 — *Golfworld 91 in Dusseldorf, Germany.* Contact Monika Waraczynski at (0211) 45600-543.

10-13 — *International Irrigation Exposition in San Antonio, Texas.* Contact The Irrigation Association at 703-524-1200.

14-16 — *Landscape Maintenance Association Meeting and Demo at a site to be announced.* Contact LMA at 813-584-2312.

17-20 — *Green Industry Expo in Tampa, Fla.* Contact Associated Landscape Contractors of America at 703-241-4004.

18-21 — *Professional Lawn Care Association of America Convention and Trade Show in Tampa, Fla.* Contact PLCAA at 404-977-5222.

19-20 — *4th Annual Southern Grounds & Turf Maintenance Exhibition and Conference in Myrtle Beach, S.C.* Contact S.C. State Board for Technical & Comprehensive Education at 800-553-7702.

19-21 — *Inland Northwest Turf and Landscape Conference and Trade Show in Spokane, Wash.* Contact show producers at 800-729-5904.

December

3 — *New Hampshire GCSA Annual Meeting in Concord, N.H.*

8-11 — *CGSA's 43rd Annual Canadian Turfgrass Conference and Trade Show and 25th Annual Meeting in Toronto.* Contact Canadian Golf Superintendents Association at 800-387-1056.

9-11 — *22nd Annual Georgia Turfgrass Conference & Trade Show in Atlanta.* Contact Extension Conference Office at 912-681-5189.

9-12 — *Ohio Turfgrass Conference and Trade Show in Cincinnati.* Contact Ohio Turfgrass Foundation at 614-292-2601.

1992

January

16-18 — *Mid-Am Trade Show in Chicago.* Contact 708-526-3993.

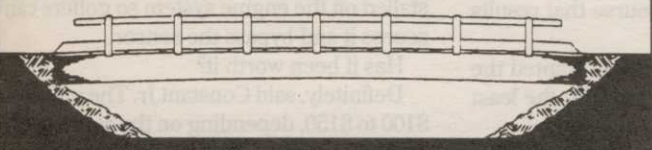
February

10-17 — *GCSAA Annual Conference & Show in New Orleans.**

* — For more information, contact Betsy Evans, education coordinator, Golf Course Superintendents Association of America, at 800-472-7878 or 913-841-2240. The seminars are dependent upon the availability of the instructors, and are therefore subject to change. One-day seminars cost \$100 for GCSAA members and \$120 for non-members; two-day seminars cost \$180 for members and \$210 for non-members.

Golf Course Marketplace

To reserve space in this section, call Simone Lewis, 813-576-7077



Timber Bridges

by Western Wood Structures, Inc.
Call Chuck Schmokel - 503/692-6900
1-800-482-4004

CIRCLE #177

MOWER MATE®



U.S. & Foreign Patents Pending. Canadian Pat. #66639
Protect your greensmower from damage due to transport from green to green. Our exclusive 3-point clamping system suspends your reel, bed-knife, verticutter & differential. Call or write for details.

BELL TURF EQUIPMENT
316 Blossom Hill Rd.
San Jose, CA 95123
(408) 972-5061

CIRCLE #178



WEATHERGUARD STEEL Equipment Awnings
STRONG • FIREPROOF • 20 YEAR WARRANTY
MODULAR, FREESTANDING, EXPANDABLE, & FAST. CALL FOR IMMEDIATE QUOTE
1-800-289-8827
100 WEST ASHE STREET, JOHNSON CITY, TENNESSEE 37601 (615)926-1470

PROTECT YOUR EQUIPMENT FOR AS LOW AS \$300 Per Square Foot

CIRCLE #179

Birds or Animals a PROBLEM??

Scare them away with

SHELLCRACKERS®

a Pest Control Device
that safely disrupts eating & nesting habits.

For more information call or write:
JPF Distributors
9 Union Square, Suite 184 N
Southbury, Connecticut 06488
203-262-1463

CIRCLE #180



Sod Stripper™

cuts a strip of sod for your small turf repairs.

Call for Brochure
800-456-4351

Miltona
TURF PRODUCTS P. O. Box 164-M • Miltona, MN 56354

CIRCLE #181

willadsen scale models

Custom Models for the Golf Industry

555 whitehall street s.w.
atlanta, ga. 30303 (404) 658-1704

CIRCLE #182



ACCU-GAGE™
Accu-gage™ is a precision measuring instrument for making highly accurate height-of-cut adjustments on greensmowers or other precision mowers.

Available in 15", 18" and 24" bars.

GROOMER-GAGE™
Groomer-gage™ is a precision measuring instrument for accurately setting the desired grooming depth of groomer or verticutter units.

For more information on this and other precision tools call Toll Free:
1-800-253-2112 or 313-429-9571 FAX: 313-429-3985
PRECISION TOOL PRODUCTS CO. 7836 Bethel Church Rd. • Saline, MI 48176

CIRCLE #183



Glued-Laminated WOOD STRUCTURES

Order Direct From The Leading Manufacturer in U.S.

- Complete Prefabricated Packages
- Direct Distribution Throughout the U.S.
- Ready for Fast Erection
- Custom Design & Engineering

UNIT STRUCTURES, INC. CALL
P.O. BOX A MORRISVILLE, N.C. 27560 **1-800-777-UNIT**

CIRCLE #184

Three strikes and you're out at Heather Hills CC

Electronic device lets golfer know when he leaves the cart path

By Mark Leslie

The Poholeks of Heather Hill Country Club had a problem and no solution.

Their problem: Maverick golfers were driving their carts onto the fairways, muddying them up, compacting the turf and generally raising havoc with playing conditions.

Their solution: None. That is, until the day Constant Poholek Jr., part-time lawyer and full-time son of the president and owner of Heather Hill, had a brainstorm.

With the ingenuity of Uncle Ernest Poholek, Constant Jr.'s idea is now a reality on Heather Hill's fleet of 41 gas-powered golf cars. And only the brave wander off the cart paths that span the 18-hole course, which will enlarge to 27 holes next year.

Each car is equipped with an electronic device that senses whether the car is on grass versus tar or gravel. As soon as the car veers off the path, an alarm sounds, warning the golfer to drive back onto the path.

If a golfer violates the restriction three times, the device shuts off the engine and the car goes nowhere. "The chronic violator is the person who is way off course in places

they shouldn't be with a golf car," said Constant Jr., who is assistant manager under general manager Normand Champagne.

"It has worked out very well," he said. "We developed it last year so we could have plusher fairways. People were muddying and tearing them up."

In six months of use, Constant Jr. said few have complained about the sensors.

"Most people are accepting it," he said. "The old and handicapped golfer may not like it, but we don't have any handicapped golfers right now. And the average golfer will appreciate the nice course that results from it."

Constant Jr. said the owners wanted the ability to manage the course with the least number of marshals.

"We do have two rangers, also, but this gives us efficient management of the cart path system," he said. "Also, we find that the wear and tear on our carts is minimal. We get

longer life out of the cart and have more control."

Ernest Poholek, an electronics engineer and inventor from Attleboro, Mass., who is the Heather Hill maintenance person, needed little time to turn his nephew's idea into a six-by-four-inch, weatherproof, electronic sensor that can be modified to buzz an alarm, speak a "Please return to the cart path" warning, or kill the engine.

Mounted near the rear wheel well, the sensor turns the engine off when tampered with. Also, a locking mechanism can be installed on the engine system so golfers can't access it and bypass the sensor.

Has it been worth it?

Definitely, said Constant Jr. The unit costs \$100 to \$150, depending on the alarm option chosen.

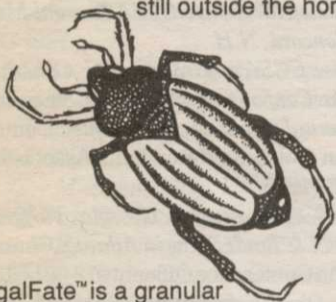
And the Poholeks say if anyone is interested in ordering some, they can have them built immediately.

RegalFate™ THE FATAL ATTRACTION FOR INSECTS!



Now landscape managers can provide a service urgently needed by homeowners.

As easily as spreading fertilizers, you can control fleas, ticks, ants, spiders and many other pesky insects while they are still outside the home.



RegalFate™ is a granular insecticide. The active ingredient is impregnated on a 100% edible, organic carrier and then baited to attract the insects to eat the toxicant. Ingestion is many times more effective than contact or vapor action of insecticides.

Just spread a 10 foot band of RegalFate™ around the house or building for complete insect control.



Regal Chemical Company
P.O. BOX 900 / ALPHARETTA, GA 30239
PHONE 404-475-4837 / 800-621-5208



When Results Count...

...USE THE BEST!

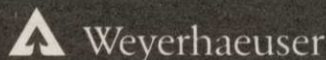
Silva-Fiber™ Grows Golf Courses!

Seeds/Sprigs/Stolons/Capping
100% Virgin Wood Fiber
for Hydraulic Planting
- Available Worldwide -

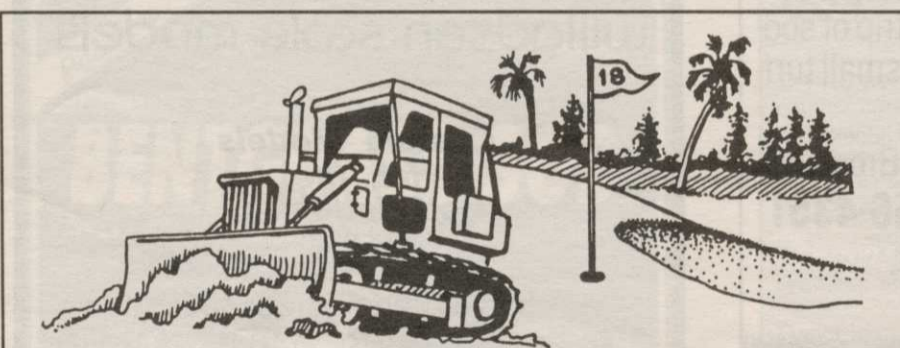
(800) 443-9179

Fax (206) 888-7504

Weyerhaeuser Engineered Fiber, Tacoma, WA 98477



CIRCLE #158



GUETTNER & SONS INCORPORATED

specializing in
Complete Turnkey Golf Course Construction
and Renovations

Building Across the United States
Since 1954

Contact Chris Nelson
P.O. Box 1987, Ft. Pierce, FL 34954
Tel: (407) 461-8345
Fax: (407) 461-8039

CIRCLE #157

ADVERTISERS INDEX

RS#	Advertiser	Page	RS#	Advertiser	Page
166	Anderson Instruments	59	143	Flowtronex	40
118	The Andersons	23	142	Fore Par	53
141	Aquatrols	38	112	Golf 2000 Pavers	17
178	Bell Turf Equipment	61	162	Golf Direction Associates	59
171	Bloch & Co.	60	101	Grace-Sierra	2
120	Ciba-Geigy	24-25	107	Grace-Sierra	11
131	Ciba-Geigy	31	109	Grace-Sierra	13
133	Ciba-Geigy	33	111	Grace-Sierra	15
136	Ciba-Geigy	35	134	Greens Encroachment Barriers	34
145	Ciba-Geigy	43	161	Greenscape Pump Services	59
153	Ciba-Geigy	53	114	Growth Products	20
155	Ciba-Geigy	56-57	157	Guettler & Sons	62
129	Club Car	30	179	Homotech Indus.	61
176	Continental Bridge	60	110	Hyundai	14
105	Cushman	8-9	104	ISK Biotech	6-7
127	Cushman	26-27	160	Jacobsen	64
148	Cushman	47	169	Jesco Products	59
106	Di Giacomo	10	146	John Deere	44-45
130	Dispro Display Products	34	180	JPF Distributors	61
159	E-Z-GO	63	139	Kalo	37
165	Excel Bridge Mfg.	59	172	Kenova Construction Corp.	60
			144	Kubota	41
			116	Lebanon Turf Products	22
			135	Mach IV Productions	35
			167	Master of the Links	59
			113	Melex	18
			164	Mike Young Designs	59
			181	Miltona Turf Products	61
			115	Par Aide	21
			163	Pavelec Bros. Construction	59
			137	Pennington Enterprises	36
			117	Precision Small Engine	23
			183	Precision Tool Co.	61
			168	Quail Valley Turf Farm	59
			150	Ransomes	50
			138	Regal Chemical	36
			156	Regal Chemical	62
			151	Rhone-Poulenc	51
			152	Roots, Inc.	52
			173	Sporting Valley Sod	60
			108	Standard Golf	12
			174	Syntennico	60
			128	Tee-2-Green	28
			140	Terracare Products Co.	34
			103	Toro Comm'l. Prod. Div.	3-5
			154	Toro Comm'l. Prod. Div.	54-55
			147	Trojan Battery Co.	46
			184	Unit Structures	61
			175	Warehouse Radio	60
			177	Western Wood Structures	61
			158	Weyerhaeuser	62
			182	Willadsen Scale Models	61
			149	Yamaha	49
			170	Yard Edge	60