

Palmer, California team up for public facilities

PLEASANTON, Calif. — Believing the 1990s will emphasize public play golf, California's 58 counties and 460 cities have teamed with Arnold Palmer to build municipal courses.

The joint announcement was made by Palmer and California Muni Golf, a public/private partnership sponsored by the County Supervisors Association of California and the League of California Cities.

Called MuniGolf Partnership, the team will develop "well-planned and well-designed municipal courses that will not only be self-supporting without taxpayer subsidy, but will also provide an economic return to the community," Palmer said.

Palmer's course design and management companies in Ponte Vedra Beach, Fla., will work with economists Alfred Gobar and Associates of Brea, Calif., Kajima Engineering and Construction Inc. of Los Angeles, and planning specialists Pacific Investment Network Inc. of Los Angeles.

Courses will be designed as cen-

New Jersey county needs \$5M for course

RARITAN TOWNSHIP, N.J. — The county park board seeks \$5 million to develop a golf course site. The 244-acre Kuster Farm in Raritan Township appears the land of choice.

The Kuster Farm would replace the board's previous golf course site, county-owned 150-acre Tower Hill Farm in Bethlehem Township. This site was ruled out late in the planning stages because of wetlands.

As to doubts that land owner Ernest Kuster Jr. would wait for Green Acres funding to come through, freeholder George Melick said, "He probably will. It's the best deal in town."

Panks designed Paradise Valley CC

Architect Gary Panks of Scottsdale, Ariz., did major portions of the design work at Paradise Valley (Ariz.) Country Club.

March's **Super Focus** article on Paradise Valley superintendent Bill Emerson mentioned that Emerson works on renovations with architect Geoffrey Cornish of Amherst, Mass. But when the course was first built, Cornish did the routing and consulted, while Panks directed all the shaping and other finetuning, and added bunkers and a number of mounds.

Cornish said Panks has also instituted a major tree-planting plan on the course and did all the design work on the practice fairway.

terpieces for community and neighborhood development. The program will emphasize reclamation and water conservation, irrigating with wastewater when possible.

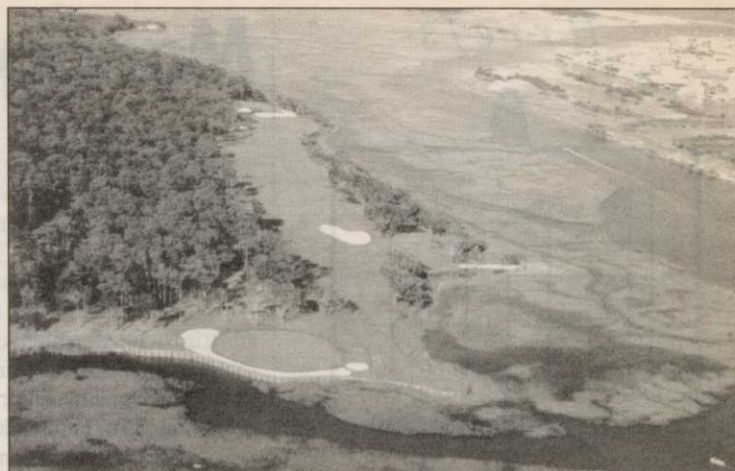
Available for new courses and rehabilitation projects, the partnership's range of services includes economic development/feasibility studies, financing, planning and design, construction management and operations management.

Tax attorney's first design wins national honors

NORTH MYRTLE BEACH, S.C. — Tidewater Golf and Country Club has been selected 1990's Best New Public Course in America by *Golf Digest* and headed the list of 1990's Top 10 New Public Courses in America by *Golf Magazine*.

Evaluation was based on shot values, playability, design balance, memorability and aesthetics.

Ken Tomlinson, a tax attorney who bought the land and turned course designer, supervised every detail. His design philosophy high-



The 13th fairway at Tidewater Golf Club and Plantation in N. Myrtle Beach, S.C. unobstructed by artificial man-made mounds. lighted magnificent views of natural sea and landscape settings

THE COMPLETE COMMERCIAL MOWING SYSTEM FROM "A" TO "Z"



Kubota's FZ2100 with Auto Assist Differential and Zero Diameter Turning Radius.

Kubota has introduced a complete new mowing system, the FZ2100 Front Mower. From "A" — Auto Assist Differential (AAD) to "Z" — Zero Diameter Turning Radius (ZDT), it increases your power and mobility to handle all your mowing needs.

Equipped with 20 horsepower and four-wheel drive, the new FZ2100 Front Mower's zero diameter turning radius gives you the agility and power to get into the tightest spaces effectively. You can mow around trees, hedges, flower beds and other obstacles much more precisely and in less time. And, with the Auto Assist Differential drive system the machine automatically switches between 2WD and 4WD to match operating conditions and terrain, providing more traction and eliminating slippage. This increased productivity in all mowing conditions, and the FZ2100's ability to turn com-

pletely around in one spot without damage to the turf, cuts way down the time spent on labor-intensive hand trimming jobs.

The FZ2100's front wheels rotate freely through your tightest turns, and Kubota

has designed round shoulder tires that virtually eliminate turf damage. And, the FZ2100 offers all the durability and innovation commercial operators have come to expect from Kubota. Like our powerful Kubota liquid-cooled diesel engine, hydrostatic transmission, 55 degree tilt deck for easy access and blade maintenance and optional grass catcher.

Your authorized Kubota dealer can show you the complete commercial mowing system with the power and maneuverability to handle your tough jobs from A to Z. For more information write to:

Kubota Tractor Corporation
P.O. Box 7020-Z
Compton, CA 90224-7020.



Kubota

CIRCLE #144