

March

4-8 - Club Managers Association of America Annual Conference in Dallas. Contact Kathi Pernell at 703-739-9500.

10-12 - Ohio State Golf Course Owners Conference in Akron. Contact Allan Whaling at 614-889-1593.

12 - Seminar on Recent Developments in Turfgrass Disease and Control by Dr. Houston Couch in Edmonton, Alberta, Canada. Contact the Canadian Golf Superintendents Association, 203-2000 Weston Road, Weston, Ontario M9N 1X3; 800-387-1056.

12-13 - GCSAA seminar in Philadelphia, Pa., on Environmental Considerations in Golf Course Management.*

12-13 - "Turfgrass Management for Professionals" in Davis, Calif. sponsored by the Univ. of Calif. Extension, worth 0.8 CEUs.

13-14 - Reinders Brothers, Inc.'s 10th Turf Conference, Equipment Show and Service Clinic at Waukesha (Wis.) Expo Center. Contact Ed Devinger at 13400 Watertown Plank Road, Elm Grove, Wis. 53122; 414-786-3301.

15 - Seminar, "Update on Pesticides and Spraying Calibrations," by Dr. Chris Hall in Hamilton, Ontario, Canada. Contact the Canadian Golf Superintendents Association, 203-2000 Weston Road, Weston, Ontario M9N 1X3; 800-387-1056.

18-19 - GCSAA seminar in Minneapolis, Minn., on Public Relations and Public Speaking.*

21 - GCSAA seminar in Milwaukee, Wis., on Safe Pesticide Management.*

23-24 - Seminar, "Pesticide Safety Training," at Springfield Golf & CC, Guelph, Ontario, Canada. Contact John Gravett at 519-767-1611.

24 - Seminar on Soil Modifications in Montreal, Quebec, Canada, by Dr. Donald Waddington. Contact the Canadian Golf Superintendents Association, 203-2000 Weston Road, Weston, Ontario M9N 1X3; 800-387-1056.

25-26 - GCSAA seminar in Indianapolis, Ind., on Integrated Pest Management.*

April

11-14 - Golf Asia '91, the first international golf show for the Asia-Pacific region, at the World Trade Centre in Singapore. Contact Zainal Abidin Shah, exhibition manager, at Connex Private Ltd., 3015A Ubi Road 1 #05-11/12, Kampong Ubi Industrial Estate, Singapore 1440; telephone 7489696.

15-16 - Southeastern Turf Conference in Tifton, Ga. Contact Georgia GCSA at 404-769-4076.

16-17 - GCSAA seminar in Palm Springs, Calif., on Disease Identification and Control.*

18-19 - Landscape Industry Show/Greentech 91 in Long Beach, Calif. Contact California Landscape Contractors Association at 916-448-2522.

22-24 - Golf Development Expo in Palm Springs, Calif. Contact Crittenden Research Institute, Inc., P.O. Box 1150, Novato, Calif. 9448; 800-443-8318.

May

20-21 - Pacific Rim Japan-America Resort and Golf Executive Conference in Hawaii. For information call Executive Conferences at 800-873-9137.

July

28-30 - International Lawn, Garden and Power Equipment Expo 91 in Louisville, Ky. Contact Expo Hot Line at 800-558-8767.

31 - Griffin Field Day, Georgia Experiment Station in Griffin, Ga. Contact Georgia GCSA at 404-769-4076.

Golf Course Marketplace

To reserve space in this section, call Simone Lewis, 813-576-7077

Birds or Animals a PROBLEM??

Scare them away with

SHELLCRACKERS®

a Pest Control Device

that safely disrupts eating & nesting habits.

For more information call or write:

JPF Distributors

9 Union Square, Suite 184 N
Southbury, Connecticut 06488
203-262-1463

CIRCLE #163

Keep That Edge



Contact Your Local Distributor or Call Us
Toll Free 1 (800) 422-4748

CIRCLE #164



PAVELEC BROTHERS GOLF COURSE CONSTRUCTION CO., INC.

- ✓ New Construction
- ✓ Renovation
- ✓ Field Drainage Systems

TONY PAVELEC
(201) 667-1643
EMIL PAVELEC
(201) 939-6182

98 Evergreen Ave.
Nutley, NJ 07110

CIRCLE #165

GOLF COURSE MANAGEMENT

Is your golf course not performing to expectations?
Call our Management Division (602) 837-6086

GOLF COURSE DEVELOPMENT

Looking for an alternative to the high cost of the
signature golf courses?

CALL THE GOLF COURSE COMPANY

- offering the most competitive rates in the industry
- increasing your profits

Terry Carroll
(805) 969-2642
California

Mike Phelan
(602) 837-6086
Arizona

CIRCLE #166

Tulip Colorblends... Nature's Fireworks® A flower display you can put on.



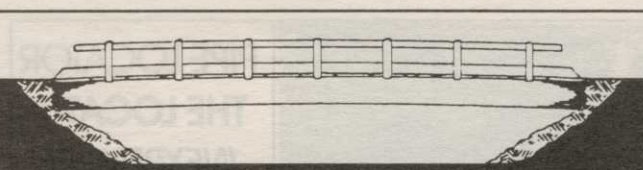
SCHIPPER & CO.

Wholesale Bulbgrowers and Exporters
1616ZG Hoogkarspel, Holland

USA Address: P.O. Box 236, Haddonfield, NJ 08033
Toll Free: 1 800-TPP-TOES or 1 800-877-8637

"Our Roots Are Bulbs"

CIRCLE #167



Timber Bridges

by Western Wood Structures, Inc.
Call Chuck Schmokel - 503/692-6900
1-800-482-4004

CIRCLE #168

Keep Your Divot Seed Mixture Where It Is Used ...



... in Divot Seed & Soil tee buckets next to the tee markers. Available in Cedar or Redwood slats and with companion Trash'M debris buckets.



Ask Your Golf Course Distributor for
INNOVATIVE MAINTENANCE PRODUCTS

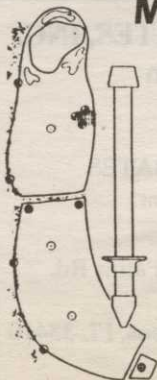
From *Master of the Links*

P.O. Box 52 • Lombard, IL 60148-0052
(708) 627-8379 (MASTERY)

CIRCLE #169

Modular Golf Course Markers

- for
- OUT-OF-BOUNDS MARKERS
- YARDAGE MARKERS
- GROUND UNDER REPAIR MARKERS
- ⊕ TEE MARKERS
- HAZARD MARKERS



For more information call Toll Free
1-800-969-5920

MARKERS, INC.

33597 Pin Oak Parkway, Avon Lake, OH 44012
Phone (216) 933-5927 FAX (216) 933-7839

CIRCLE #170

Continued from page 60

Continued from page 59

August

7—*Illinois Landscape Contractors Association Summer Field Day in St. Charles, Ill.* Contact ILCA at 708-932-8443.

8—*MNLA Summer Meeting and Trade Show in St. Paul, Minn.* Contact Minnesota Nursery and Landscape Association at 612-633-4987.

16-18—*TAN-MISSLARK Regional Nursery and Garden Supply Show in Dallas.* Contact Texas Association of Nurserymen at 512-280-5182.

25-27 — *National Lawn, Garden and Power Equipment Showcase in Toronto, Ontario, Canada.* Contact show producers at 705-741-2536.

September

1-3 — *International Garden Trade Fair in Cologne, Germany.* Contact show producers at 212-974-8836.

13-15—*Florida Nursery and Allied Trades Show in Orlando, Fla.* Contact FNGA at 407-345-8137.

15-17 — *GMA Show-International Professional Lawn, Garden and Outdoor Power Equipment Exhibition in Kempton Park, United Kingdom.* Contact Andry Montgomery Group at 502-473-1992.

16-19 — *Northwest Turfgrass Conference and Exhibition in Couer d'Alene, Idaho.* Contact NTA at 206-754-0825.

25 — *25th Annual CGSA Fall Field Day at Carling Lake Golf & CC in Lachute, Quebec, Canada.* Contact Canadian Golf Superintendents Association at 800-387-1056.

October

7—*Allied Association Meeting at St. Ives CC and Bend CC.* Contact Georgia GCSA at 404-769-4076.

November

3-5 — *Georgia GCSA Annual Meeting at Jekyl Island Club Resort.* Contact Georgia GCSA at 404-769-4076.

5-6 — *Indiana State Lawn Care Association Conference and Show in Indianapolis.*

Continued to page 61

Daylen
INCORPORATED

GOLF COURSE
CONSTRUCTION

2559 So. East Ave.
Fresno, CA 93706
(209) 233-3345
FAX (209) 233-2086
Lic. No. 437564
Dale L. Siemens
President

CIRCLE #147

Motorola Radium 2-Way Radios

P10 VHF 1 Watt= \$189 P50 VHF 5 Watt= \$275
Chest Harnesses: \$26. Also- Metal detectors, marking paint, flagging, levels, wire flags, distance measurers, etc.

1-800-533-3886

Maine surveyors' service, inc.
28 U.S. Route One
Yarmouth, ME 04096
CIRCLE #171

Poa Free
Pennsylvania Grown PENNCROSS

BENTGRASS SOD

CALL 800-USA-TURF (872-8873) or 717-898-5000

SPORTING VALLEY
SOD

CIRCLE #173

PIPE LOCATOR THE LOCAT™ INEXPENSIVE

Locates, traces underground pipes, including drain pipes, made of PVC, ABS, steel and cement. Finds sprinklers, valves and clogs.

Used by Hundreds of Golf Courses
Satisfaction Guaranteed

Bloch & Company
Box 18058, Cleveland, OH 44118
(216) 371-0979

CIRCLE #175

JOHNCKE, BATES & ASSOCIATES, INC.
Golf Course Construction

GARY E. BATES
President

11382 Prosperity Farms Rd.
Suite 230
Palm Beach Gardens, FL 33410
(407) 626-0233
Fax (407) 626-0591

CIRCLE #177

Golf Course Marketplace

To reserve space in this section, call Simone Lewis, 813-576-7077

"NOVATEE"

The **NOVATEE** is a combination of specially manufactured **synthetic grass** of commercial quality. Its patented design, featuring top dressing imbedded between the fibers, allows golfers to tee up just like on natural grass.

The **NOVATEE** is the state-of-the-art synthetic tee surface for all courses & driving ranges.

Dealer inquiries requested. PO/CP 533 CSL
Montreal, P.Q., Can. H4V 2Z1
514/486-1696
SyntenniCo Inc. Fax 514/486-9927

CIRCLE #172

Nationwide delivery • Install in less than two hours

Golf Course Bridges!
1-800-328-2047

Thousands in use. Built to last.
Sponsor Member

CONTINENTAL BRIDGE
Route 5, Box 178, Alexandria, MN 56308 • (612) 852-7500

CIRCLE #174

MOWER MATE®

U.S. & Foreign Patents Pending. Canadian Pat. #66639
Protect your greensmower from damage due to transport from green to green. Our exclusive 3-point clamping system suspends your reel, bed-knife, verticutter & differential. Call or write for details.

BELL TURF EQUIPMENT
316 Blossom Hill Rd.
San Jose, CA 95123
(408) 972-5061

CIRCLE #176

GOLF COURSE RADIOS

Motorola
2 WAY RADIO
PORTABLE FM
POCKET SIZE
GOLF COURSE ORGANIZATION
\$235.00
Radium Mail Order Pricing...

for details call Jim Martin
(800) 523-0625

2 YR. WARRANTY FREE DEMO
WAREHOUSE RADIO
3038 State, Columbus, IN 47201

CIRCLE #178

Golf Course Marketplace

To reserve space in this section, call Simone Lewis, 813-576-7077

FIX YOUR DRY SPOTS



This Handi Airifier™ has seven 1/2" tines and attaches to your old cup cutter.

800-456-4351

Miltona Turf Products

P.O. BOX 164 • MILTONA, MINNESOTA 56354

CIRCLE #179



2-WAY PORTABLE SYSTEM

\$395 INCLUDES:
2 Radios
2 Holsters
2 Charging Systems

2 WEEK FREE TRIAL

MADE IN THE USA

800-333-6212
1850 Kimball Rd. S.E., Canton, OH 44707

CIRCLE #180

willadsen scale models

Custom Models for the Golf Industry

555 whitehall street s.w.
atlanta, ga. 30303 (404) 658-1704

CIRCLE #181



EXCEL
BRIDGE MANUFACTURING CO.

Golf Course Bridges are our specialty! We fabricate easy-to-install, pre-engineered spans and deliver them anywhere in the U.S.A. Call today for a free consultation.

800/548-0054

12001 SHOEMAKER AVENUE, SANTA FE SPRINGS, CALIFORNIA
213/944-0701 FAX 213/944-4025

CIRCLE #182

MORE GOLFERS LOOK DOWN ON OUR PRODUCTS TO IMPROVE THEIR SCORE!

Engraved Yardage Labels
For Sprinkler Heads

- BRIGHT COLORS
- FASTENERS INCLUDED



CALL FOR FREE SAMPLES!

(800) 284-YARD

Out of USA: (316) 788-6857
Fax: (316) 264-7164

YARD EDGE GOLF COMPANY

P.O. Box 13159, Wichita, KS 67213

CIRCLE #183

LIST RENTAL

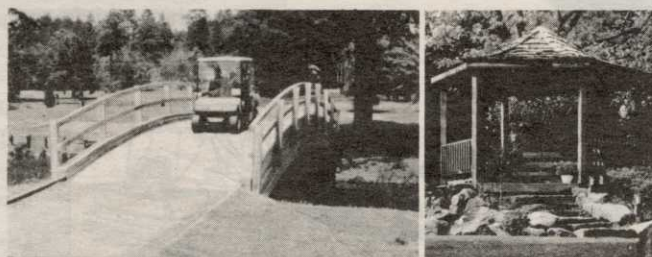
GOLF COURSE NEWS

...now offers you the opportunity to reach the decision makers at thousands of golf facilities with an exclusive mailing list.

Call Simone Lewis for details.

(813) 576-7077

CIRCLE #184



Glued-Laminated WOOD STRUCTURES

Order Direct From The Leading Manufacturer in U.S.

- Complete Prefabricated Packages
- Direct Distribution Throughout the U.S.
- Ready for Fast Erection
- Custom Design & Engineering

UNIT STRUCTURES, INC.
P.O. BOX A MORRISVILLE, N.C. 27560
CALL 1-800-777-UNIT

CIRCLE #185

Continued from page 60

Contact ISLCA at 317-575-9010.

5-8 — *New York State Turfgrass Association Turf and Grounds Exposition in Rochester, N.Y.* Contact NYSTA at 800-873-TURF.

10-13 — *International Irrigation Exposition in San Antonio, Texas.* Contact The Irrigation Association at 703-524-1200.

14-16 — *Landscape Maintenance Association Meeting and Demo at a site to be announced.* Contact LMA at 813-584-2312.

17-20 — *Green Industry Expo in Tampa, Fla.* Contact Associated Landscape Contractors of America at 703-241-4004.

18-21 — *Professional Lawn Care Association of America Convention and Trade Show in Tampa, Fla.* Contact PLCAA at 404-977-5222.

19-21 — *Inland Northwest Turf and Landscape Conference and Trade Show in Spokane, Wash.* Contact show producers at 800-729-5904.

December

3-4 — *Southern Grounds and Turf Maintenance Expo in Myrtle Beach, S.C.* Contact show producers at 800-553-7702.

8-11 — *CGSA's 43rd Annual Canadian Turfgrass Conference and Trade Show and 25th Annual Meeting in Toronto.* Contact Canadian Golf Superintendents Association at 800-387-1056.

9-12 — *Ohio Turfgrass Conference and Trade Show in Cincinnati.* Contact Ohio Turfgrass Foundation at 614-292-2601.

* — *For more information or to register, contact Betsy Evans, education coordinator, GCSAA at 800-472-7878. The seminars are dependent upon the availability of instructors, and are therefore subject to change. One-day seminars cost \$100 for GCSAA members and \$120 for non-members; two-day seminars cost \$180 for members and \$210 for non-members.*

CALENDAR ITEMS

If your organization is holding a meeting or conference, please let us know and we will include it in our calendar.

Just write: Calendar, *Golf Course News*, P.O. Box 997, Yarmouth, ME 04096.

GOLF ISN'T ALWAYS A GAME. Sometimes, It's A Business

Constructing or redesigning a golf course, hiring staff, negotiating contracts, financing and operations. This is when golf isn't a game and requires the assistance from experts with hands-on experience in every aspect of golf and country clubs.

Fraser Golf Consultants can tell you what is absolutely essential to the success of your course—and what is not.

For a free FGC brochure and information call

FRASER GOLF CONSULTANTS

609-641-7575.

James Fraser, Pres. Douglas Fraser, V.P.
One Leo Fraser Dr., Northfield, NJ 08225

CIRCLE #148