

# Golf Course Marketplace

To reserve space in this section, call Simone Lewis, 813-576-7077

## EMPLOYMENT FOR SALE BUSINESS OPPORTUNITIES

### SHAPING MAN

Golf course construction co. desires small dozer operator to shape golf course features. Compensation based on experience and ability. **Midwest Golf Development, 800 McHenry Ave., Ste. H, Crystal Lake, IL 60014. 815-459-6565.**

### POSITIONS WANTED

#### SITUATION WANTED — GOLF COURSE EXECUTIVE

Owner/operator/developer seeks responsible position in golf course industry. Will travel; willing to accept temporary assignments.

(517) 362-7386.

#### POSITION WANTED

Golf course superintendent/construction supervisor position wanted. 14 yrs. experience in horticulture w/college degree & excellent references. Willing to travel.

Call **James Rewinski**  
(516) 728-5059

### REAL ESTATE

#### WANTED

Golf course operator seeks operations for lease, purchase or joint venture.

Fax (201) 842-4608

#### TEXAS GOLF COURSES

9 & 18 holes — Statewide.  
Some with extra land, dev. lots.  
Descriptive list available.

#### TEXAS GOLF PROPERTIES

1603 Lightsey — Austin, TX 78704  
512/442-7105 • Fax 512/442-1812

#### COMMERCIAL GOLF PROPERTIES

COLDWELL BANKER COMMERCIAL GOLF PROPERTIES MARKETING GROUP has been formed by the nation's largest commercial real estate brokerage to market golf courses nationwide. For information contact **Roger Garrett, 602/262-5511** or **Tom Harris, 602/262-5521.**

#### FOR SALE

Golf courses and developments for sale: Kentucky and Georgia. Contact Jack Ridge or Rick Crawford.

(502) 839-9875  
(502) 839-8400

### EDUCATION

**GRAYSON COLLEGE**, Dennison, TX. 2-year technical program in golf course & turf grass management. 18-hole golf course on campus. Dormitories, placement assistance, financial aid & scholarships available. Contact: **GCC, 6101 Grayson Dr., Dennison, TX 75020. (214) 465-6030, ext. 253.**

#### MEYER Z-52 ZOYSIA SOD

Bermuda-free; forklift delivery to the Mid-Atlantic region.

#### OAKWOOD SOD FARM

Salisbury, MD  
(301) 742-3086

#### POND LINERS

Buy direct from fabricator 20 & 30 mil. P.V.C. Made to order. Under 20 cents per sq. ft. Installation or supervision available. Call...

#### COLORADO LINING COMPANY

(303) 841-2022

#### ZOYSIA SOD

Zoysia sod, sprigs, sprigging, row planting, solid sodding, strip sodding, renovations, turnkey jobs.

#### DOUBLE SPRINGS GRASS FARM

1-800-458-4756

#### FOR SALE

Used Rain Bird electric controllers. I have switched to Maxi V system & have 28 good used SC1230 & one MC/3S. Will sell all or part. Call (407) 239-1057, ask for George.

#### PENNSYLVANIA GROWN SOD

Penncross Bentgrass — 4-way blend of Bluegrass — Bluegrass/Ryegrass blend - - shipped via our trucks, forklift unloaded.

#### VICNOR FARMS, INC.

Connoquenessing, PA 16027  
(412) 789-7811

#### MERGER

Hard-working owner of well-equipped Irrigation Company is seeking merger with a company in the Mid to South Atlantic states for golf course & athletic field installations. Serious letters of interest should be faxed to:

(908) 526-8378

### GOLF COURSE ACCESSORIES

#### SAVE ON PERSONALIZED FLAGS

Buy factory direct & save 40% or more on personalized flags. Flagpoles, tee markers, etc. also available. Fast personalized service guaranteed. Call toll free.



FOUR SEASONS  
GOLF COMPANY

P.O. Box 78011  
Greensboro, NC 27427  
1-800-476-7005

Advertise your golf course for sale, used equipment, golf course accessories and employment opportunities in GOLF COURSE MARKETPLACE

### LASER MEASURING and SPRINKLER YARDAGE MARKERS

We do it all. Laser measure & installation (same day) of **custom metal yardage markers** for all types of sprinkler heads. Warranty included. Also tee to green measurements, granite fairway markers. Sprinkler yardage markers may be purchased separately. Contact Nick for samples & references. **Fairway Designs of Florida, 800-36-TAGIT.**

### CLASSIC CULTURED MARBLE

Tee • Entrance • Direction Signs  
LASER MEASURING TEE TO GREEN



1939 Hallam Drive  
Lakeland, FL 33813  
(813) 646-3351

### GOLF COURSE FINANCING

#### MALONEY GOLF FINANCE, INC.

Arranging financing for existing 18-hole daily fee courses & for-profit country clubs with at least 3 years operating history. Contact:

**Russ Maloney, President**  
6901 W. 63rd St., Ste. 204  
Overland Park, KS 66202  
913-432-9990 Fax 913-432-5759



## MEADOWCREEK COUNTRY CLUB

A Resort Community  
Mission, Texas

ASKING PRICE: \$2,500,000

- 18 Hole Golf Course
- 44,500 Sq. Ft. Clubhouse with Swimming Pool
- Restaurant and Banquet Facilities
- 3 Tennis Courts, 20 Shuffleboard Courts
- Maintenance and Storage Facilities
- 296 Residential Lots
- 231 Recreational Vehicle Lots
- 93 Mobile Home Lots
- 9.65 Future Development Acreage

Sealed Bid Offer due by April 15, 1991 5:00 p.m.

For Sealed Bid Package call:  
1-800-800-FDIC

**FDIC** Dallas Consolidated Office

CIRCLE #160



Available in 15",  
18" and 24" bars.

#### ACCU-GAGE™

Accu-gage™ is a precision measuring instrument for making highly accurate height-of-cut adjustments on greensmowers or other precision mowers.

#### GROOMER-GAGE™

Groomer-gage™ is a precision measuring instrument for accurately setting the desired grooming depth of groomer or verticutter units.

For more information on this and other precision tools call Toll Free:

1-800-253-2112 or 313-429-9571 FAX: 313-429-3985

PRECISION TOOL PRODUCTS CO. 7836 Bethel Church Rd. • Saline, MI 48176

CIRCLE #161

### NEW ROPE-LOC™

Finally, a rope and stake system that works! Simple but unique... the ROPE-LOC system eliminates annoying or unsightly rope failures. Simple, clean, durable — ROPE-LOC stakes are made of 3/8" steel and finished in attractive

yellow epoxy coating.

As shown in the blow-up, rope is securely "wedged" in place.

Call for a special introductory offer.

1-800-253-2112 / In Michigan call Collect: 313-429-9571

PRECISION TOOL PRODUCTS CO. • 7836 Bethel Church Rd. • Saline, MI 48176

CIRCLE #162

March

4-8 - Club Managers Association of America Annual Conference in Dallas. Contact Kathi Pernell at 703-739-9500.

10-12 - Ohio State Golf Course Owners Conference in Akron. Contact Allan Whaling at 614-889-1593.

12 - Seminar on Recent Developments in Turfgrass Disease and Control by Dr. Houston Couch in Edmonton, Alberta, Canada. Contact the Canadian Golf Superintendents Association, 203-2000 Weston Road, Weston, Ontario M9N 1X3; 800-387-1056.

12-13 - GCSAA seminar in Philadelphia, Pa., on Environmental Considerations in Golf Course Management.\*

12-13 - "Turfgrass Management for Professionals" in Davis, Calif. sponsored by the Univ. of Calif. Extension, worth 0.8 CEUs.

13-14 - Reinders Brothers, Inc.'s 10th Turf Conference, Equipment Show and Service Clinic at Waukesha (Wis.) Expo Center. Contact Ed Devinger at 13400 Watertown Plank Road, Elm Grove, Wis. 53122; 414-786-3301.

15 - Seminar, "Update on Pesticides and Spraying Calibrations," by Dr. Chris Hall in Hamilton, Ontario, Canada. Contact the Canadian Golf Superintendents Association, 203-2000 Weston Road, Weston, Ontario M9N 1X3; 800-387-1056.

18-19 - GCSAA seminar in Minneapolis, Minn., on Public Relations and Public Speaking.\*

21 - GCSAA seminar in Milwaukee, Wis., on Safe Pesticide Management.\*

23-24 - Seminar, "Pesticide Safety Training," at Springfield Golf & CC, Guelph, Ontario, Canada. Contact John Gravett at 519-767-1611.

24 - Seminar on Soil Modifications in Montreal, Quebec, Canada, by Dr. Donald Waddington. Contact the Canadian Golf Superintendents Association, 203-2000 Weston Road, Weston, Ontario M9N 1X3; 800-387-1056.

25-26 - GCSAA seminar in Indianapolis, Ind., on Integrated Pest Management.\*

April

11-14 - Golf Asia '91, the first international golf show for the Asia-Pacific region, at the World Trade Centre in Singapore. Contact Zainal Abidin Shah, exhibition manager, at Connex Private Ltd., 3015A Ubi Road 1 #05-11/12, Kampong Ubi Industrial Estate, Singapore 1440; telephone 7489696.

15-16 - Southeastern Turf Conference in Tifton, Ga. Contact Georgia GCSA at 404-769-4076.

16-17 - GCSAA seminar in Palm Springs, Calif., on Disease Identification and Control.\*

18-19 - Landscape Industry Show/Greentech 91 in Long Beach, Calif. Contact California Landscape Contractors Association at 916-448-2522.

22-24 - Golf Development Expo in Palm Springs, Calif. Contact Crittenden Research Institute, Inc., P.O. Box 1150, Novato, Calif. 9448; 800-443-8318.

May

20-21 - Pacific Rim Japan-America Resort and Golf Executive Conference in Hawaii. For information call Executive Conferences at 800-873-9137.

July

28-30 - International Lawn, Garden and Power Equipment Expo 91 in Louisville, Ky. Contact Expo Hot Line at 800-558-8767.

31 - Griffin Field Day, Georgia Experiment Station in Griffin, Ga. Contact Georgia GCSA at 404-769-4076.

# Golf Course Marketplace

To reserve space in this section, call Simone Lewis, 813-576-7077

## Birds or Animals a PROBLEM??

Scare them away with

### SHELLCRACKERS®

a Pest Control Device

that safely disrupts eating & nesting habits.

For more information call or write:

#### JPF Distributors

9 Union Square, Suite 184 N  
Southbury, Connecticut 06488  
203-262-1463

CIRCLE #163

## Keep That Edge



Contact Your Local Distributor or Call Us  
Toll Free 1 (800) 422-4748

CIRCLE #164



### PAVELEC BROTHERS GOLF COURSE CONSTRUCTION CO., INC.

- ✓ New Construction
- ✓ Renovation
- ✓ Field Drainage Systems

TONY PAVELEC  
(201) 667-1643  
EMIL PAVELEC  
(201) 939-6182

98 Evergreen Ave.  
Nutley, NJ 07110

CIRCLE #165

### GOLF COURSE MANAGEMENT

Is your golf course not performing to expectations?  
Call our Management Division (602) 837-6086

### GOLF COURSE DEVELOPMENT

Looking for an alternative to the high cost of the  
signature golf courses?

### CALL THE GOLF COURSE COMPANY

- offering the most competitive rates in the industry
- increasing your profits

Terry Carroll  
(805) 969-2642  
California

Mike Phelan  
(602) 837-6086  
Arizona

CIRCLE #166

## Tulip Colorblends... Nature's Fireworks® A flower display you can put on.

### SCHIPPER & CO.

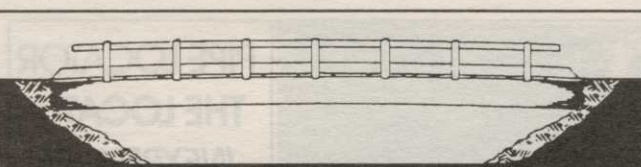
Wholesale Bulbgrowers and Exporters  
1616ZG Hoogkarspel, Holland



USA Address: P.O. Box 236, Haddonfield, NJ 08033  
Toll Free: 1 800-TPP-TOES or 1 800-877-8637

"Our Roots Are Bulbs"

CIRCLE #167



## Timber Bridges

by Western Wood Structures, Inc.  
Call Chuck Schmokel - 503/692-6900  
1-800-482-4004

CIRCLE #168

## Keep Your Divot Seed Mixture Where It Is Used ...



... in Divot Seed & Soil tee buckets next to the tee markers. Available in Cedar or Redwood slats and with companion Trash'M debris buckets.



Ask Your Golf Course Distributor for  
INNOVATIVE MAINTENANCE PRODUCTS

From

Master of the Links

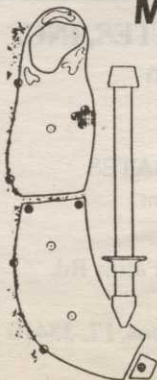
P.O. Box 52 • Lombard, IL 60148-0052  
(708) 627-8379 (MASTERY)



CIRCLE #169

## Modular Golf Course Markers

- for
- OUT-OF-BOUNDS MARKERS
- YARDAGE MARKERS
- GROUND UNDER REPAIR MARKERS
- ⊕ TEE MARKERS
- HAZARD MARKERS



For more information call Toll Free  
1-800-969-5920

**MARKERS, INC.**

33597 Pin Oak Parkway, Avon Lake, OH 44012  
Phone (216) 933-5927 FAX (216) 933-7839

CIRCLE #170

Continued from page 60

Continued from page 59

**August**

7—*Illinois Landscape Contractors Association Summer Field Day in St. Charles, Ill.* Contact ILCA at 708-932-8443.

8—*MNLA Summer Meeting and Trade Show in St. Paul, Minn.* Contact Minnesota Nursery and Landscape Association at 612-633-4987.

16-18—*TAN-MISSLARK Regional Nursery and Garden Supply Show in Dallas.* Contact Texas Association of Nurserymen at 512-280-5182.

25-27 — *National Lawn, Garden and Power Equipment Showcase in Toronto, Ontario, Canada.* Contact show producers at 705-741-2536.

**September**

1-3 — *International Garden Trade Fair in Cologne, Germany.* Contact show producers at 212-974-8836.

13-15—*Florida Nursery and Allied Trades Show in Orlando, Fla.* Contact FNGA at 407-345-8137.

15-17 — *GMA Show-International Professional Lawn, Garden and Outdoor Power Equipment Exhibition in Kempton Park, United Kingdom.* Contact Andry Montgomery Group at 502-473-1992.

16-19 — *Northwest Turfgrass Conference and Exhibition in Couer d'Alene, Idaho.* Contact NTA at 206-754-0825.

25 — *25th Annual CGSA Fall Field Day at Carling Lake Golf & CC in Lachute, Quebec, Canada.* Contact Canadian Golf Superintendents Association at 800-387-1056.

**October**

7—*Allied Association Meeting at St. Ives CC and Bend CC.* Contact Georgia GCSA at 404-769-4076.

**November**

3-5 — *Georgia GCSA Annual Meeting at Jekyl Island Club Resort.* Contact Georgia GCSA at 404-769-4076.

5-6 — *Indiana State Lawn Care Association Conference and Show in Indianapolis.*


Continued to page 61

**Daylen**  
INCORPORATED

GOLF COURSE  
CONSTRUCTION

2559 So. East Ave.  
Fresno, CA 93706  
(209) 233-3345  
FAX (209) 233-2086  
Lic. No. 437564  
Dale L. Siemens  
President

CIRCLE #147



Motorola **Radium**  
**2-Way Radios**

P10 VHF 1 Watt= \$189 P50 VHF 5 Watt= \$275  
Chest Harnesses: \$26. Also- Metal detectors, marking paint, flagging, levels, wire flags, distance measurers, etc.

**1-800-533-3886**

**Maine surveyors' service, inc.**  
28 U.S. Route One  
Yarmouth, ME 04096  
CIRCLE #171

Poa Free

Pennsylvania Grown PENNCROSS

**BENTGRASS SOD**

CALL 800-USA-TURF (872-8873) or 717-898-5000



CIRCLE #173



**PIPE LOCATOR**  
**THE LOCAT™**  
**INEXPENSIVE**


Locates, traces underground pipes, including drain pipes, made of PVC, ABS, steel and cement. Finds sprinklers, valves and clogs.

Used by Hundreds of Golf Courses  
Satisfaction Guaranteed

**Bloch & Company**  
Box 18058, Cleveland, OH 44118  
(216) 371-0979

CIRCLE #175

**JOHNCKE, BATES & ASSOCIATES, INC.**  
Golf Course Construction



GARY E. BATES  
President

11382 Prosperity Farms Rd.  
Suite 230  
Palm Beach Gardens, FL 33410  
(407) 626-0233  
Fax (407) 626-0591

CIRCLE #177

**Golf Course Marketplace**

To reserve space in this section, call Simone Lewis, 813-576-7077

**"NOVATEE"**



The **NOVATEE** is a combination of specially manufactured **synthetic grass** of commercial quality. Its patented design, featuring top dressing imbedded between the fibers, allows golfers to tee up just like on natural grass.



The **NOVATEE** is the state-of-the-art synthetic tee surface for all courses & driving ranges.

Dealer inquiries requested. PO/CP 533 CSL  
Montreal, P.Q., Can. H4V 2Z1  
**SyntenniCo Inc.** 514/486-1696  
Fax 514/486-9927

CIRCLE #172



Nationwide delivery • Install in less than two hours

**Golf Course Bridges!**  
**1-800-328-2047**

Thousands in use.  
Built to last.  
Sponsor Member



Route 5, Box 178, Alexandria, MN 56308 • (612) 852-7500



CIRCLE #174

**MOWER MATE®**



U.S. & Foreign Patents Pending. Canadian Pat. #66639  
Protect your greensmower from damage due to transport from green to green. Our exclusive 3-point clamping system suspends your reel, bed-knife, verticutter & differential. Call or write for details.



**BELL TURF EQUIPMENT**

316 Blossom Hill Rd.  
San Jose, CA 95123  
(408) 972-5061

CIRCLE #176

**GOLF COURSE RADIOS**



**Motorola**  
2 WAY RADIO  
PORTABLE FM  
POCKET SIZE  
GOLF COURSE ORGANIZATION  
**\$235.00**  
Radium Mail Order Pricing...

for details call Jim Martin (800) 523-0625

2 YR. WARRANTY FREE DEMO

**WAREHOUSE RADIO**  
3038 State, Columbus, IN 47201

CIRCLE #178

# Golf Course Marketplace

To reserve space in this section, call Simone Lewis, 813-576-7077

## FIX YOUR DRY SPOTS



This Handi Airifier™ has seven 1/2" tines and attaches to your old cup cutter.

**800-456-4351**

### Miltona Turf Products

P.O. BOX 164 • MILTONA, MINNESOTA 56354

CIRCLE #179

## ANDERSON INSTRUMENT & supply co.

**2-WAY PORTABLE SYSTEM**

**\$395** INCLUDES:  
2 WEEK FREE TRIAL

- 2 Radios
- 2 Holsters
- 2 Charging Systems

MADE IN THE USA

**800-333-6212**  
1850 Kimball Rd. S.E., Canton, OH 44707

CIRCLE #180

## willadsen scale models

*Custom Models  
for the  
Golf Industry*

555 whitehall street s.w.  
atlanta, ga. 30303 (404) 658-1704

CIRCLE #181

## EXCEL

BRIDGE MANUFACTURING CO.

Golf Course Bridges are our specialty! We fabricate easy-to-install, pre-engineered spans and deliver them anywhere in the U.S.A. Call today for a free consultation.

**800/548-0054**

12001 SHOEMAKER AVENUE, SANTA FE SPRINGS, CALIFORNIA  
213/944-0701 FAX 213/944-4025

CIRCLE #182

## MORE GOLFERS LOOK DOWN ON OUR PRODUCTS TO IMPROVE THEIR SCORE!

**Engraved Yardage Labels**  
For Sprinkler Heads

- BRIGHT COLORS
- FASTENERS INCLUDED



CALL FOR FREE SAMPLES!

**(800) 284-YARD**

Out of USA: (316) 788-6857  
Fax: (316) 264-7164

**YARD EDGE GOLF COMPANY**

P.O. Box 13159, Wichita, KS 67213

CIRCLE #183

## LIST RENTAL

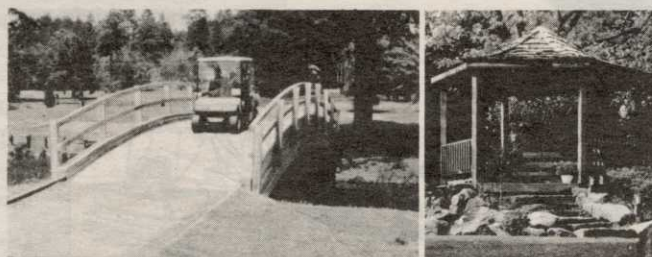
### GOLF COURSE NEWS

...now offers you the opportunity to reach the decision makers at thousands of golf facilities with an exclusive mailing list.

Call Simone Lewis for details.

**(813) 576-7077**

CIRCLE #184



## Glued-Laminated WOOD STRUCTURES

Order Direct From The Leading Manufacturer in U.S.

- Complete Prefabricated Packages
- Ready for Fast Erection
- Direct Distribution Throughout the U.S.
- Custom Design & Engineering

**UNIT STRUCTURES, INC.** CALL  
P.O. BOX A MORRISVILLE, N.C. 27560 1-800-777-UNIT

CIRCLE #185

Continued from page 60

Contact ISLCA at 317-575-9010.

**5-8** — *New York State Turfgrass Association Turf and Grounds Exposition in Rochester, N.Y.* Contact NYSTA at 800-873-TURF.

**10-13** — *International Irrigation Exposition in San Antonio, Texas.* Contact The Irrigation Association at 703-524-1200.

**14-16** — *Landscape Maintenance Association Meeting and Demo at a site to be announced.* Contact LMA at 813-584-2312.

**17-20** — *Green Industry Expo in Tampa, Fla.* Contact Associated Landscape Contractors of America at 703-241-4004.

**18-21** — *Professional Lawn Care Association of America Convention and Trade Show in Tampa, Fla.* Contact PLCAA at 404-977-5222.

**19-21** — *Inland Northwest Turf and Landscape Conference and Trade Show in Spokane, Wash.* Contact show producers at 800-729-5904.

### December

**3-4** — *Southern Grounds and Turf Maintenance Expo in Myrtle Beach, S.C.* Contact show producers at 800-553-7702.

**8-11** — *CGSA's 43rd Annual Canadian Turfgrass Conference and Trade Show and 25th Annual Meeting in Toronto.* Contact Canadian Golf Superintendents Association at 800-387-1056.

**9-12** — *Ohio Turfgrass Conference and Trade Show in Cincinnati.* Contact Ohio Turfgrass Foundation at 614-292-2601.

\* — *For more information or to register, contact Betsy Evans, education coordinator, GCSAA at 800-472-7878. The seminars are dependent upon the availability of instructors, and are therefore subject to change. One-day seminars cost \$100 for GCSAA members and \$120 for non-members; two-day seminars cost \$180 for members and \$210 for non-members.*

### CALENDAR ITEMS

If your organization is holding a meeting or conference, please let us know and we will include it in our calendar.

Just write: Calendar, *Golf Course News*, P.O. Box 997, Yarmouth, ME 04096.

## GOLF ISN'T ALWAYS A GAME. Sometimes, It's A Business

Constructing or redesigning a golf course, hiring staff, negotiating contracts, financing and operations. This is when golf isn't a game and requires the assistance from experts with hands-on experience in every aspect of golf and country clubs.

Fraser Golf Consultants can tell you what is absolutely essential to the success of your course—and what is not.

For a free FGC brochure and information call

## FRASER GOLF CONSULTANTS

**609-641-7575.**

James Fraser, Pres. Douglas Fraser, V.P.  
One Leo Fraser Dr., Northfield, NJ 08225

CIRCLE #148