



# In Case Of Pythium Break Open This Case.

Koban® turf fungicide kills Pythium instantly—on contact.

Keep Koban on hand because, left untreated, Pythium can spread like wildfire.

Koban is the most effective Pythium control available. In over 20 years of use, there's never been a reported case of resistance. It's the brand more and more superintendents are using, because they know

they can trust it, completely.

Koban is available in two convenient formulations—30% wettable powder or 1.3% granular. You can spot apply the granular without interrupting play. And increase the effectiveness of your systemic preventive program by rotating in either formulation at low rates.

Call your Grace-Sierra distributor today. Or for more information call us toll-free at 1-800-492-8255.

And get a case or two of Koban right now. Keep it handy, just like you do a fire extinguisher.

Just in case...

**GRACE SIERRA**  
Tournament Condition  
Every Day.

© 1990 Grace-Sierra Crop Protection Co. Koban is a registered trademark of Grace-Sierra Crop Protection Co.

CIRCLE #101



# GOLF COURSE NEWS

THE NEWSPAPER FOR THE GOLF COURSE INDUSTRY

A UNITED PUBLICATION  
VOLUME 3, NUMBER 7  
JULY 1991

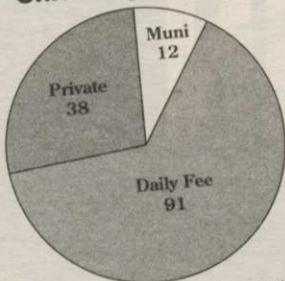
## INSIDE

**Hawaiian protesters**  
Protesters picket a golf course development conference in Hawaii ... 3

**GCSAA in court**  
National association appeals jury's \$1.5M verdict ... 5

**Bluegrass sod**  
Lean times for bluegrass sod growers, *Golf Course News* survey finds ... 24-25

### University Courses



Types of university-affiliated golf courses in the United States. Total = 141. Source: NGF. See related story on page 33.

**COURSE MAINTENANCE**  
Voc-tech school starts golf maintenance course ... 13  
Terry Bucher puts down roots ... 14  
PLCAA president seeks closer GCSAA ties ... 15

**COURSE DEVELOPMENT**  
Male, female pros cash in on design sense ... 27  
Freem courses cited ... 27  
Newly approved and planned courses listed ... 32

**COURSE MANAGEMENT**  
University courses among the best ... 33  
Universal golf ticket enters marketplace ... 33  
Innovative program trains resort employees ... 33

**SUPPLIER BUSINESS**  
Toro sues Fuque over trademark rights ... 37  
TOCA adopts advertising guidelines ... 37  
Golf marketing seminar set ... 38

TO: JOE BLACK  
WESTERN GOLF PROPERTIES  
7711 E. GREENWAY RD.  
SCOTTSDALE, AZ 85260

**SEED AND SOD**  
A special look at research and the marketplace

## USGA promises another \$4.1M

*Executive Committee promises continued support through 1997*

By Mark Leslie

The U.S. Golf Association Executive Committee has approved another \$4.15 million in funding for research projects. Revealing the decision made on June 10, USGA Green Section National Di-

rector Jim Snow said he was excited at the committee's high level of support for the research program.

The committee this winter allotted \$3.8 million to 18 research projects through 1992. That will complete the 10-year program that began in 1983.

This new infusion of funds will carry research from 1993 to 1997, Snow said. Accomplishments so far have consisted mostly of findings that set the foundation for further studies, Snow

said. He cited the Turfgrass Information File at Michigan State University, which "is a tremendous resource for the entire industry and is just now catching on"; development of NuMex Sahara bentgrass and 609 buffalograss; and investigation of breeding improvements such as screening for salt.

"These are things you can't visually see, but that were important research," he said. "We're at the point now where

Continued on page 11



The University of Wisconsin has joined the growing ranks of universities with affiliated golf courses. This is a view of its new Robert Trent Jones Jr.-designed course, which officially opens in July. See a story on university courses on page 33.

## Winter whacks Washington courses with winter kill

By Bob Spivak

Yoyo-like winter temperatures caused winter kill that devastated greens on northern Washington State courses, costing tens of thousands of dollars in repair bills and lost revenues.

The Spokane area, which boasts some of the nation's best municipal courses, was hit the hardest. Indian Canyon, perennially listed among the

top U.S. venues, counted at least half its greens this spring as "browns." And it was not alone.

In fact, courses that fared best had newly planted bentgrass, or were blanketed with snow throughout the winter. Most severely damaged were courses with incursions of poa annua (annual bluegrass) and little or no snow

Continued on page 13

## Mass. enacts new pesticide mandates

By Vern Putney

The Massachusetts Department of Food and Agriculture will require all private and commercial pesticide applicators to file an annual report listing specific pesticide use information based on previous year records beginning in 1992.

The records will be made available to the 351 cities and towns in the Bay

Continued on page 17

## Seed scientists making great strides

By Mark Leslie

While plant breeders are making extraordinary advances in turfgrasses, scientists are probing and developing other improvements using nature's endophytes and nematodes and new

See related stories p. 20-26.

techniques like seed priming and coating.

"A lot of very bright and talented young people are going into turfgrass research," said Dr. Reed Funk

of Rutgers University, an expert in cool-season grasses. "They will do a lot of things that haven't been done.

"Priming," he added, "could be developed to be a delivery system for micro-

Continued on page 20

The most important people in the golf course industry make our front page every month.



People like Joe Black, President of Western Golf Properties, Inc. ... consultants and managers of more than a dozen courses from coast to coast.

Former President of the PGA, Chairman of the 1983 Ryder Cup Matches and 1979 & 1980 PGA Championship, Black calls *Golf Course News* a

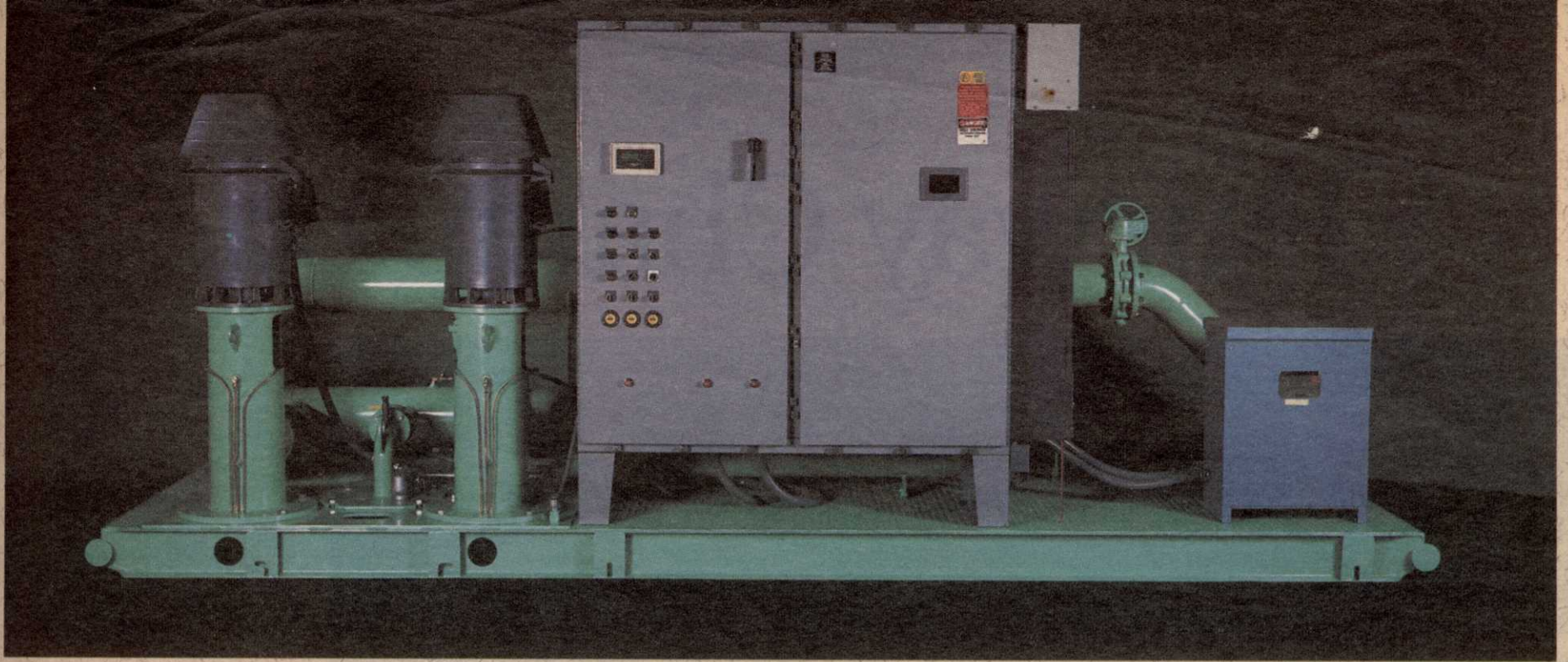
"most informative golf course development publication." "It covers subjects that are current, important and impact the industry," he contends.

If you want to reach 20,000 of the most important people in golf ... decision makers at every course in America, call *Golf Course News* today.

It's "addressed" for success.

# GOLF COURSE NEWS

7901 Fourth Street North  
St. Petersburg, FL 33702  
(813) 576-7077 Fax (813) 579-9788



# VARIABLE FREQUENCY DRIVE PUMP CONTROL

**From the Innovative Leader in Prefabricated Water Pumping System Design**

**Pumping Systems, Inc.** manufactures custom made prefabricated water pumping systems that provide maximum efficiency and low operating cost exclusively for turf grass managers. Extensive research has been conducted by PSI engineers over the past seven years to seek improved water pumping techniques including the design and construction of Variable Frequency Drive (VFD) controlled pumping systems. Since 1988, PSI has delivered VFD systems to turf grass irrigation projects across the United States.

**Today, PSI continues this research and development effort** in order to provide the most reliable systems available. Some standard features include: U.S. manufactured, state-of-the-art VFD; custom designed computer control software; dehumidified air cooler for the control panel; power filter; and system capacity relief valve. These features ensure the durability, reliability and operator confidence required for today's turf irrigation pumping systems.

**PSI has a factory trained national service network.** For prompt service or more information about the finest turf irrigation pumping systems available, contact your nearest dealer or:

## Pumping Systems, Inc.

10717 Harry Hines Blvd. Dallas, Texas 75220 (214) 357-1320

Toll-free (800) 527-0539 FAX (214) 357-5861



# Fairway Champion.

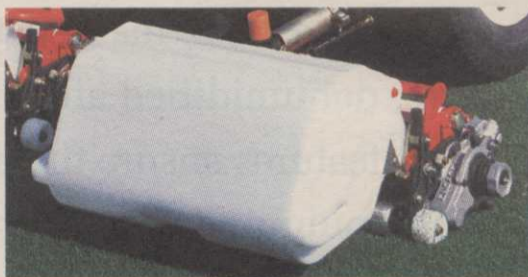


- Exclusive "on-demand" 4WD option.
- Choose 7 or 5 blade reels to cut between 1/4" and 1 3/16".
- Exclusive Turf Groomer<sup>®</sup> fairway conditioner.
- Durable, high efficiency diesel engine.
- Rugged, field-proven chassis with heavy-duty lift arms.
- High-capacity, easy on-off catchers.
- Vertical mowers available.

**Superior fairway mowing.**  
In head-to-head comparisons, the LF-100 delivered superior fairway mowing, in all kinds of grasses.

It starts with exclusive Jacobsen heavy-section, 22" reels. They stand up to challenging fairway conditions and follow ground contours closely for a smooth, manicured cut at production mowing speeds of more than 5 mph.

**Exclusive down-pressure system.**  
For the ultimate in cutting performance, add the



unique, dual-spring down pressure system. It puts the pressure at the rear rollers, where it's needed, to show off your fairways' best features.

**Lightest footprint.**  
The LF-100 has the lightest footprint in the industry. It delivers minimal compaction even on the

softest fairways.

Prove it to yourself. Contact a Jacobsen distributor for a demonstration on your course against any fairway mower. Let the LF-100 give you and your fairways a superiority complex.

**JACOBSEN**  
**TEXTRON**

Jacobsen Division of Textron Inc.