

July

10-12 - Northern Seed Assn. summer meeting at Rapid City, S.D. Contact Robb Sexauer at 605-692-6171.

12-13 - NGF seminar on public/private course development partnerships in Palm Beach Gardens, Fla. Contact Roger Yaffe at 800-733-6006.

15 - Joint GCSA of New England/New Hampshire GCSA meeting in Lowell, Mass. Contact Paul Miller at 508-369-5704.

16 - Mississippi State Univ. Turfgrass Field Day at Starkville. Contact Euel Coats at 601-325-3138.

29 - Missouri Turfgrass Field Day at Columbia. Contact Missouri Valley Turfgrass Assoc. at 314-882-4087.

31 - Univ. of Ga. Turfgrass Field Day at Griffin. Contact Extension Conference Office at 912-681-5189.

August

1 - Golf Course Superintendents Association of New England Superintendents Championship at Weston CC. Contact Paul Miller at 508-369-5704.

1 - Nat'l Turfgrass Evaluation Program Research Field Day in Beltsville, Md. Contact Kevin Morris at 301-344-2125.

4-6 - Georgia GCSA Summer Conference and Outing at Lake Lanier Islands. For more information contact 404-945-8787.

6-8 - Field diagnostic course for turfgrass managers in Ithaca, N.Y. Contact Joann Gruttadaurio at 607-255-1792.

7 - Illinois Landscape Contractors Association Summer Field Day in St. Charles, Ill. Contact ILCA at 708-932-8443.

8 - MNLA Summer Meeting and Trade Show in St. Paul, Minn. Contact Minnesota Nursery and Landscape Association at 612-633-4987.

8 - Rutgers Turfgrass Research Field Day in Freehold, N.J. Contact Edmund Milewski at 201-285-8300.

16-18 - TAN-MISSLARK Regional Nursery and Garden Supply Show in Dallas. Contact Texas Association of Nurserymen at 512-280-5182.

17-19 - West Coast Golf Show in Long Beach. Contact Southern California PGA.

22 - Michigan State University Turfgrass Field Day, Trade Show and Equipment Auction in East Lansing. Contact 517-353-2033.

25-27 - National Lawn, Garden and Power Equipment Showcase in Toronto, Ontario, Canada. Contact show producers at 705-741-2536.

September

1-3 - International Garden Trade Fair in Cologne, Germany. Contact show producers at 212-974-8836.

3-5 - IoG Sports & Leisure World Trade Exhibition in Peterborough, England. Telephone 0908 311856.

6-7 - GCSAA 65th anniversary and dedication of new headquarters building in Lawrence, Kan. Contact GCSAA at 913-841-2240.

7 - Georgia GCSA Nob North Golf Outing at Cohutta. Contact Karen White at 404-769-4076.

13-15 - Florida Nursery and Allied Trades Show in Orlando, Fla. Contact FNGA at 407-345-8137.

15-17 - GMA Show-International Professional Lawn, Garden and Outdoor Power Equipment Exhibition in Kempton Park, United Kingdom. Contact Andry Montgomery Group at 502-473-1992.

Continued on page 43

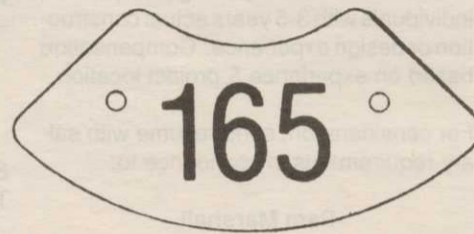
Golf Course Marketplace

To reserve space in this section, call Simone Lewis, 813-576-7077

MORE GOLFERS LOOK DOWN ON OUR PRODUCTS TO IMPROVE THEIR SCORE!

Engraved Yardage Labels For Sprinkler Heads

- BRIGHT COLORS
- FASTENERS INCLUDED



CALL FOR FREE SAMPLES!

(800) 284-YARD

Out of USA: (316) 788-6857
Fax: (316) 264-7164

YARD EDGE GOLF COMPANY

P.O. Box 13159, Wichita, KS 67213

CIRCLE #150

THE ABSOLUTE SOLUTION Complete Finish Services For New Golf Course Irrigation Systems

- New Construction Start-ups & Repairs
- Personnel Training
- Controller Wiring & Programming
- Computer & Radio-Controlled Systems Installed
- Troubleshooting & Testing
- Serving Mid to South Atlantic States

ABSOLUTE IRRIGATION SYSTEMS, INC.

Contact Charlie Moretti, President

Tel: 908-526-4998 Fax: 908-526-8378

P.O. Box 6723, Bridgewater, NJ 08807

CIRCLE #151

**ANDERSON
INSTRUMENT
& supply co.**

**2-WAY
PORTABLE
SYSTEM**



\$395

2 WEEK
FREE TRIAL

INCLUDES:
**2 Radios
2 Holsters
2 Charging Systems**

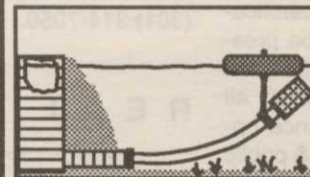
MADE IN THE USA

800-333-6212
1850 Kimball Rd. S.E., Canton, OH 44707

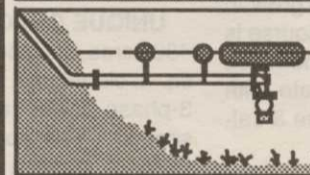
CIRCLE #152

FLOAT-N- PRODUCTS™

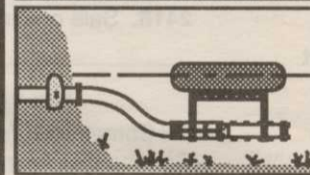
Extend the life of your pump equipment and alleviate silt build-up throughout your entire irrigation system - from intake to greens!



Float -N- Screen™
(Patented)



Float -N- Foot Valve™



Float -N- Pump™

manufactured by:

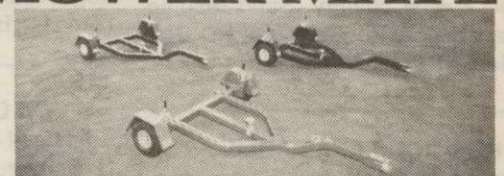
Greenscape Pump Services, Inc.
556 Coppell Road
Coppell, Texas 75019

Phone: (214) 393-0346

Fax: (214) 393-2337

CIRCLE #153

MOWER MATE®



U.S. & Foreign Patents Pending. Canadian Pat. #66639
Protect your greensmower from damage due to transport from green to green. Our exclusive 3-point clamping system suspends your reel, bed-knife, verticutter & differential. Call or write for details.

**BELL TURF
EQUIPMENT**

316 Blossom Hill Rd.
San Jose, CA 95123
(408) 972-5061

CIRCLE #154

Golf Course Marketplace

To reserve space in this section, call Simone Lewis, 813-576-7077

Continued from page 42

16-17 — *Marketing to Golf Facilities Seminar in Chicago* sponsored by *Golf Course News*. Contact Becky Quinlan at 207-846-0600.

16-19 — *Northwest Turfgrass Conference and Exhibition in Couer d'Alene, Idaho*. Contact NTA at 206-754-0825.

17 - *Metropolitan GCSA Professional Turfgrass Field Day at Rye N.Y.* Contact Bob Lipmann at 914-248-7476.

17-19 - *Va. Tech. Turf & Landscape Field Days in Blacksburg*. Contact J.R. Hall III at 703-231-5797.

25 — *25th Annual CGSA Fall Field Day at Carling Lake Golf & CC in Lachute, Quebec, Canada*. Contact Canadian Golf Superintendents Association at 800-387-1056.

October

2-3-31st *Annual Southern Calif. Turfgrass Expo in Costa Mesa*. Contact Chuck Wilson at 714-951-8547.

7 — *Allied Association Meeting at St. Ives CC and Bend CC*. Contact Georgia GCSA at 404-769-4076.

13-15 - *Fla. Turfgrass Annual Conference & Show in Jacksonville*. Contact 407-898-6721.

24-26 — *Summit 91 Women in Golf in Daytona Beach, Fla.* Contact LPGA at 9040254-8800.

November

3-5 — *Georgia GCSA Annual Meeting at Jekyll Island Club Resort*. Contact Georgia GCSA at 404-769-4076.

5-6 — *Indiana State Lawn Care Association Conference and Show in Indianapolis*. Contact ISLCA at 317-575-9010.

5-8 — *New York State Turfgrass Association Turf and Grounds Exposition in Rochester, N.Y.* Contact NYSTA at 800-873-TURF.

7-10 - *Golfworld 91 in Dusseldorf, Germany*. Contact Monika Waraczynski at (0211) 45600-543.

10-13 — *International Irrigation Exposition in San Antonio, Texas*. Contact The Irrigation Association at 703-524-1200.

14-16 — *Landscape Maintenance Association Meeting and Demo at a site to be announced*. Contact LMA at 813-584-2312.

17-21 — *Green Industry Expo in Tampa, Fla.* Contact PLCAA at 404-977-5222.

19-20 — *4th Annual Southern Grounds & Turf Maintenance Exhibition and Conference in Myrtle Beach, S.C.* Contact S.C. State Board for Technical & Comprehensive Education at 803-737-9355.

19-21 — *Inland Northwest Turf and Landscape Conference and Trade Show in Spokane, Wash.* Contact show producers at 800-729-5904.

December

2-6th *Your Home Turf at Michigan State University in East Lansing*. Contact Dr. Frank Rossi at 517-353-0860.

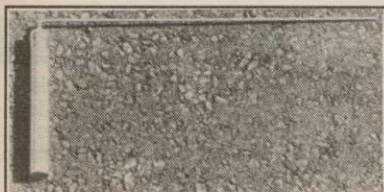
2-4 - *14th Annual Turf & Ornamental seminar at ABAC, Tifton*. Contact 912-386-3449.

3 — *New Hampshire GCSA Annual Meeting in Concord, N.H.*

3-4 — *Southern Grounds and Turf Maintenance Expo in Myrtle Beach, S.C.* Contact show producers at 800-553-7702.

8-11 — *CGSA's 43rd Annual Canadian*

Continued on page 44



PIPE LOCATOR
THE LOCAT™
INEXPENSIVE

Locates, traces underground pipes, including drain pipes, made of PVC, ABS, steel and cement. Finds sprinklers, valves and clogs.

Used by Hundreds of Golf Courses

Satisfaction Guaranteed

Bloch & Company
Box 18058, Cleveland, OH 44118
(216) 371-0979

CIRCLE #155



Nationwide delivery • Install in less than two hours

Golf Course Bridges!
1-800-328-2047

Thousands in use.
Built to last.
Sponsor Member
CONTINENTAL BRIDGE

Route 5, Box 178, Alexandria, MN 56308 • (612) 852-7500

NGF
NATIONAL GOLF FOUNDATION



CIRCLE #159

Keep That Edge

18
pinhigh
reel sharpening compound

Contact Your Local Distributor or Call Us
Toll Free 1 (800) 422-4748

CIRCLE #156

THE BALLMARK REPAIRER

This unique repair tool was developed over 40 years ago by Pete Stewart, Superintendent at Butterfield Country Club, Hinsdale, IL. It was widely distributed by George A. Davis Company and is still in demand by many Golf Course Superintendents. It is now available through MASTER of the LINKS.

Ask Your Golf Course Distributor for
INNOVATIVE MAINTENANCE PRODUCTS

From *Master of the Links*

P.O. Box 52 • Lombard, IL 60148-0052
(708)627-8379 • FAX (708)627-8370

CIRCLE #160

Golf course design.

MIKE YOUNG DESIGNS

3 North Main Street • P.O. Box 289 • Watkinsville, GA 30677
Phone: (404) 769-7415 • FAX: (404) 769-8538

CIRCLE #157

Sod Stripper™ cuts a strip of sod for your small turf repairs.

Call for Brochure
800-456-4351

Miltona

TURF PRODUCTS P. O. Box 164-M • Miltona, MN 56354

CIRCLE #161

EXCEL
BRIDGE MANUFACTURING CO.

Golf Course Bridges are our specialty! We fabricate easy-to-install, pre-engineered spans and deliver them anywhere in the U.S.A. Call today for a free consultation.

800/548-0054

12001 SHOEMAKER AVENUE, SANTA FE SPRINGS, CALIFORNIA
213/944-0701 FAX 213/944-4025

CIRCLE #158

MOTOROLA Radius PORTABLE RADIOS

• Free 2 week trial
• Radios start at ***\$99**
• Up to a 5 year warranty

CALL FOR MORE INFORMATION
1-800-570-1670
*OTHER BRANDS AVAILABLE
PAGE.COM

CIRCLE #162

Continued from page 43

Turfgrass Conference and Trade Show and 25th Annual Meeting in Toronto. Contact Canadian Golf Superintendents Association at 800-387-1056.

9-11 — 22nd Annual Georgia Turfgrass Conference and Trade Show in Atlanta. Contact Extension Conference Office at 912-681-5189.

9-12 — Ohio Turfgrass Conference and Trade Show in Cincinnati. For more information contact Ohio Turfgrass Foundation at 614-292-2601.

1992

January

13-14 - GCSAA Two-Day seminar on golf course design principles. Contact Karen White at 404-769-4076.

13-16 - 32nd Va. Turf & Landscape Conference & Trade Show. Contact Randeem Tharp at 804-340-3473.

16-18 - Mid-Am Trade Show in Chicago. Contact 708-526-3993.

20-22 - 62nd Annual Michigan Turfgrass Conference in Lansing. Contact Mike Saffel at 517-353-9022.

February

10-17 - GCSAA Annual Conference & Show in New Orleans.*

* — For more information or to register, contact Betsy Evans, education coordinator, Golf Course Superintendents Association of America, at 800-472-7878 or 913-841-2240. The seminars are dependent upon the availability of the instructors, and are therefore subject to change. One-day seminars cost \$100 for GCSAA members and \$120 for non-members; two-day seminars cost \$180 for members and \$210 for non-members.

Golf Course Marketplace

To reserve space in this section, call Simone Lewis, 813-576-7077



PAVELEC BROTHERS GOLF COURSE CONSTRUCTION CO., INC.

- ✓ New Construction
- ✓ Renovation
- ✓ Field Drainage Systems

TONY PAVELEC
(201) 667-1643
EMIL PAVELEC
(201) 939-6182

98 Evergreen Ave.
Nutley, NJ 07110

CIRCLE #163

"NOVATEE"

The **NOVATEE** is a combination of specially manufactured synthetic grass of commercial quality. Its patented design, featuring top dressing imbedded between the fibers, allows golfers to tee up just like on natural grass.



The **NOVATEE** is the state-of-the-art synthetic tee surface for all courses & driving ranges.

Dealer inquiries requested.

PO/CP 533 CSL
Montreal, P.Q., Can. H4V 2Z1
514/486-1696
Fax 514/486-9927

SyntenniCo Inc.

CIRCLE #164

GOLF COURSE RADIOS



POCKET SIZE 12 OZ.

Motorola

2 WAY RADIO
PORTABLE FM
POCKET SIZE
GOLF COURSE
ORGANIZATION

\$235.00

Radius Mail Order Pricing...

for details
call
Jim Martin

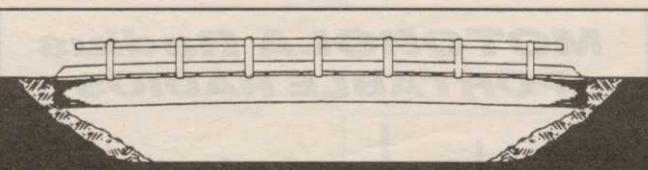
(800) 523-0625

2 YR. WARRANTY

FREE DEMO

WAREHOUSE RADIO
3038 State, Columbus, IN 47201

CIRCLE #165



Timber Bridges

by Western Wood Structures, Inc.
Call Chuck Schmokel - 503/692-6900

1-800-482-4004

CIRCLE #166



Available in 15",
18" and 24" bars.

ACCU-GAGE™

Accu-gage™ is a precision measuring instrument for making highly accurate height-of-cut adjustments on greensmowers or other precision mowers.

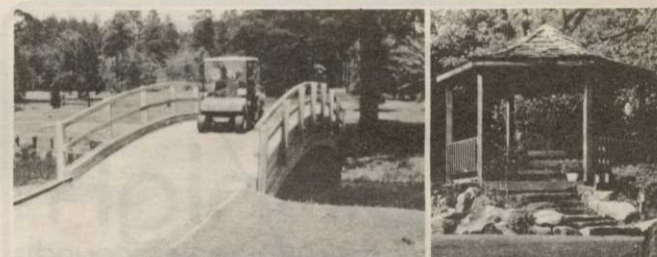
GROOMER-GAGE™

Groomer-gage™ is a precision measuring instrument for accurately setting the desired grooming depth of groomer or verticutter units.

For more information on this and other precision tools call Toll Free:
1-800-253-2112 or 313-429-9571 FAX: 313-429-3985

PRECISION TOOL PRODUCTS CO. 7836 Bethel Church Rd. • Saline, MI 48176

CIRCLE #167



Glued-Laminated WOOD STRUCTURES

Order Direct From The Leading Manufacturer in U.S.

- Complete Prefabricated Packages
- Direct Distribution Throughout the U.S.
- Ready for Fast Erection
- Custom Design & Engineering

UNIT STRUCTURES, INC.
P.O. BOX A MORRISVILLE, N.C. 27560

CALL
1-800-777-UNIT

CIRCLE #168

GOLF & COUNTRY CLUB SIGN PROGRAMS

Attractive Durable Sign Programs

- On and off course •
- Main Entrance Signs •
- Interior Signage •

Sign Programs for the Country Club

- Fitted to the Unique needs •
- of individual courses

Sandblasted Granite Sign Faces

- Sandblasted Wood Signs •
- Photographically Silk Screened Signs •

Designers & Manufacturers of

Sign Systems & Sales Centers
For Residential Builders • Since 1976



DISPRO: DISPLAY PRODUCTS CORPORATION
910 Fourth Avenue
Asbury Park, NJ 07712
(908) 988-5400
FAX (908) 774-8873

CIRCLE #131

willadsen scale models

Custom Models
for the
Golf Industry

555 whitehall street s.w.
atlanta, ga. 30303 (404) 658-1704

CIRCLE #169

Score a
HOLE IN ONE
with a
Classified Display Ad
like this one in
GOLF COURSE MARKETPLACE

Call Simone Lewis today at
(813) 576-7077
for details...

CIRCLE #170