

EMPLOYMENT

JACK NICKLAUS GOLF SERVICES

...is currently seeking qualified applicants for the following positions:

SHAPERS

Prior golf course construction experience and ability to relocate overseas essential. Excellent compensation package, including housing & vehicle.

ON-SITE DESIGN COORDINATORS

Our business keeps growing! Domestic & international assignments available to individuals with prior course construction experience and/or golf course architecture experience. Competitive compensation package including profit sharing.

For consideration, send resume with salary requirement in confidence to:

Marilyn Hannan
Jack Nicklaus
Golf Services
11780 US Highway One
No. Palm Beach, FL 33408

REAL ESTATE

TEXAS GOLF COURSES

9 & 18 holes — Statewide.
Some with extra land,
dev. lots.

Descriptive list available.
TEXAS GOLF PROPERTIES
1603 Lightsey — Austin,
TX 78704
512/442-7105
Fax 512/442-1812

COMMERCIAL GOLF PROPERTIES

COLDWELL BANKER COMMERCIAL GOLF PROPERTIES MARKETING GROUP has been formed by the nation's largest commercial real estate brokerage to market golf courses nationwide. For information contact Roger Garrett, 602/262-5511 or Tom Harris, 602/262-5521.

FOR SALE

FOR SALE

Used GRINDERS. Express Dual, Foley. Several to choose from.
Call 1-800-732-9819

POND LINERS

Buy direct from fabricator 20 & 30 mil. P.V.C. Made to order. Under 20 cents per sq. ft. Installation or supervision available. Call...

**COLORADO LINING
COMPANY**
(303) 841-2022

Golf Course Marketplace

To reserve space in this section, call Simone Lewis, 813-576-7077

SUPERINTENDENTS WANTED!!

To try these new labor-saving devices:

• **The "New Flymo"**: The original Flymo is back with a brand new look.

• **"LEVEL-EEZ"**: A unique kit that allows you to raise Toro & Rain Bird sprinkler heads in minutes with **No Digging Required**.

• **"DonuT Trimmer Edging Blades"**: Allows you to edge bunkers, sprinkler heads, yardage markers & cart paths in minutes.

• **"Aqua-Quick"**: Turns Toro & Rain Bird valve-in-head sprinklers into 1" water source instantly. To order, call:

Precision Small Engine
Co.
Andy Masciarella,
Distributor
1-800-345-1960
Thomas R. Wait
New Product Developer

FOR SALE

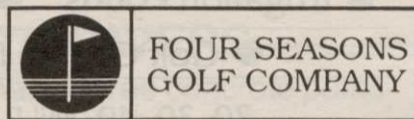
1988 BURKEEN, 30hp., vibratory plow with trenching blade and boring attachment. Very good condition. Asking \$8,000.

1-800-752-5189

GOLF COURSE ACCESSORIES

SAVE ON PERSONALIZED FLAGS

Buy factory direct & save 40% or more on personalized flags. Flagpoles, tee markers, etc. also available. Fast personalized service guaranteed. Call toll free.



FOUR SEASONS
GOLF COMPANY
P.O. Box 78011
Greensboro, NC 27427
1-800-476-7005

LASER MEASURING and SPRINKLER YARDAGE MARKERS

We do it all. Laser measure & installation (same day) of **custom metal yardage markers** for all types of sprinkler heads. Warranty included. Also tee to green measurement, granite fairway & cart path markers. Sprinkler yardage markers may be purchased separately. Contact Nick for samples & references. **Fairway Designs of Florida**, (305) 522-6252.

GRAYSON COLLEGE, Dennison, TX. 2-year technical program in golf course & turf grass management. 18-hole golf course on campus. Dormitories, placement assistance, financial aid & scholarships available. Contact: **GCC, 6101 Grayson Dr., Dennison, TX 75020. (214) 465-6030, ext. 253.**

ADVERTISING OPPORTUNITIES

GOLF COURSE NEWS CLASSIFIED ADVERTISING RATES AND INFORMATION

GOLF COURSE NEWS, the newspaper of the golf course industry, offers you a very affordable advertising option... **Classified Line Ads** in the Marketplace section. At \$45 or less per column inch, these line ads are an inexpensive way to reach 20,000 of your top prospects in the golf course industry. The 1991 rates are as follows:

| | 2x | 6x | 12x |
|-------------------|---------|---------|---------|
| Per col. inch | \$45.00 | \$40.00 | \$35.00 |
| Add per 1/4" | \$11.25 | \$10.00 | \$8.75 |
| Logo incl. in ad: | \$20.00 | | |

Call 813/576-7077 to place your ad.

**QUAIL VALLEY
FARM INC.**
"GROWERS OF QUALITY
TURF GRASSES"
ASPA

- MEYER Z-52 ZOYSIA
- TIFGREEN II
- TIFDWARF
- TIFWAY
- FESCUE
- SPRIGS

7501 KANIS ROAD
LITTLE ROCK, AR 72204
(800) 666-0007

CIRCLE #169

ENGRAVED YARDAGE LABELS

FOR SPRINKLER HEADS

- Bright colors
 - Fasteners included
 - Orders quickly shipped UPS
- CALL FOR FREE SAMPLE KIT

1-800-284-YARD

THE YARD EDGE GOLF CO.

P.O. Box 13159

Wichita, KS 67213

CIRCLE #170

LIST RENTAL

GOLF COURSE NEWS

...now offers you the opportunity to reach the decision makers at thousands of golf facilities with an exclusive mailing list.

Call Simone Lewis for details.

(813) 576-7077

CIRCLE #171

GOLF COURSE RADIOS



POCKET SIZE 12 OZ.

Motorola

2 WAY RADIO
PORTABLE FM
POCKET SIZE
GOLF COURSE
ORGANIZATION

\$235.00

Radius Mail Order Pricing...

for details
call
Jim Martin

(800) 523-0625

2 YR. WARRANTY

FREE DEMO

WAREHOUSE RADIO
3038 State, Columbus, IN 47201

CIRCLE #172

Continued from page 50

203-2000 Weston Road, Weston, Ontario M9N 1X3; 800-387-1056.

18-19 — GCSAA seminar in Minneapolis, Minn., on Public Relations and Public Speaking.*

21 — GCSAA seminar in Milwaukee, Wis., on Safe Pesticide Management.*

24 — Seminar on Soil Modifications in Montreal, Quebec, Canada, by Dr. Donald Waddington. Contact the Canadian Golf Superintendents Association, 203-2000 Weston Road, Weston, Ontario M9N 1X3; 800-387-1056.

25-26 — GCSAA seminar in Indianapolis, Ind., on Integrated Pest Management.*

April

11-14 — Golf Asia '91, the first international golf show for the Asia-Pacific region, at the World Trade Centre in Singapore. Contact Zainal Abidin Shah, exhibition manager, at Connex Private Ltd., 3015A Ubi Road 1 #05-11/12, Kampong Ubi Industrial Estate, Singapore 1440; telephone 7489696.

16-17 — GCSAA seminar in Palm Springs, Calif., on Disease Identification and Control.*

18-19 — Landscape Industry Show/Greentech 91 in Long Beach, Calif. Contact California Landscape Contractors Association at 916-448-2522.

22-24 — Golf Development Expo in Palm Springs, Calif. Contact Crittenden Research Institute, Inc., P.O. Box 1150, Novato, Calif. 9448; 800-443-8318.

July

28-30 — International Lawn, Garden and Power Equipment Expo 91 in Louisville, Ky. Contact Expo Hot Line at 800-558-8767.

August

7 — Illinois Landscape Contractors Association Summer Field Day in St. Charles, Ill. Contact ILCA at 708-932-8443.

8 — MNLA Summer Meeting and Trade Show in St. Paul, Minn. Contact Minnesota Nursery and Landscape Association at 612-633-4987.

16-18 — TAN-MISSLARK Regional Nursery and Garden Supply Show in Dallas. Contact Texas Association of Nurserymen at 512-280-5182.

25-27 — National Lawn, Garden and Power Equipment Showcase in Toronto, Ontario, Canada. Contact show producers at 705-741-2536.

September

1-3 — International Garden Trade Fair in Cologne, Germany. Contact show producers at 212-974-8836.

13-15 — Florida Nursery and Allied Trades Show in Orlando, Fla. Contact FNGA at 407-345-8137.

15-17 — GMA Show-International Professional Lawn, Garden and Outdoor Power Equipment Exhibition in Kempton Park, United Kingdom. Contact Andy Montgomery Group at 502-473-1992.

16-19 — Northwest Turfgrass Conference and Exhibition in Couer d'Alene, Idaho. Contact NTA at 206-754-0825.

November

5-6 — Indiana State Lawn Care Association Conference and Show in Indianapolis. Contact ISLCA at 317-575-9010.

5-8 — New York State Turfgrass Association Turf and Grounds Exposition in Rochester, N.Y. Contact NYSTA at 800-873-TURF.

10-13 — International Irrigation Exposition in San Antonio, Texas. Contact The Irrigation Association at 703-524-1200.

14-16 — Landscape Maintenance Association Meeting and Demo at a site to be

Continued on page 53

Golf Course Marketplace

To reserve space in this section, call Simone Lewis, 813-576-7077



Colorado Lining Company

Lining Products and Service
Custom Fabrication
and Installation

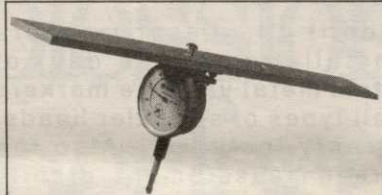
- Reservoirs ● Decorative Ponds
- Tailings Dams ● Landfill Liners
- Irrigation Ponds ● Tank Liners
- Golf Course Ponds

20, 30, 40 Mil P.V.C.
20 → 100 Mil H.D.P.E.
30 → 80 Mil V.L.D.P.E.

CALL (303) 841-2022

1062 Singing Hills Rd., Parker, CO 80134

CIRCLE #151



ACCU-GAGE

Accu-gage is a precision measuring instrument for making highly accurate height-of-cut adjustments on greensmowers or other precision mowers.

—FEATURES—

- Adjustments can be made with the gage on the mower. Simply read the gage while turning the adjusting knob.
- Measurements are made at the front edge of the bedknife regardless of bedknife wear.
- Eliminates the inaccurate "feel" method of old-type adjusting bars.
- Available in 15", 18" and 24" bars.

For more information on this and other precision tools call Toll Free:
1-800-253-2112 / In Michigan call Collect: 313-429-9571

PRECISION TOOL PRODUCTS CO. 7836 Bethel Church Rd. • Saline, MI 48176

CIRCLE #153



NEW GROOMER-GAGE

GAGE... is a precision measuring instrument for accurately setting the desired grooming depth on groomer or verticutter units.

For more information on this and other precision tools call Toll Free:
1-800-253-2112 / In Michigan call Collect: 313-429-9571

PRECISION TOOL PRODUCTS CO. 7836 Bethel Church Rd. • Saline, MI 48176

CIRCLE #155



NEW ROPE-LOC™

Finally, a rope and stake system that works! Simple but unique... the ROPE-LOC system eliminates annoying or unsightly rope failures. Simple, clean, durable — ROPE-LOC stakes are made of 3/8" steel and finished in attractive

yellow epoxy coating.

As shown in the blow-up, rope is securely "wedged" in place.

Call for a special introductory offer.

1-800-253-2112 / In Michigan call Collect: 313-429-9571

PRECISION TOOL PRODUCTS CO. • 7836 Bethel Church Rd. • Saline, MI 48176

CIRCLE #157

FIX YOUR DRY SPOTS



This Handi Airifier™ has seven 1/2" tines and attaches to your old cup cutter.

800-456-4351

Miltona Turf Products

P.O. BOX 164 • MILTONA, MINNESOTA 56354

CIRCLE #150



Motorola Radius® 2-Way Radios

P10 VHF 1 Watt = \$189 P50 VHF 5 Watt = \$275

Chest Harnesses: \$26. Also- Metal detectors, marking paint, flagging, levels, wire flags, distance measurers, etc.

1-800-533-3886



Maine surveyors' service, inc.

28 U.S. Route One
Yarmouth, ME 04096

CIRCLE #152

Poa Free

Pennsylvania Grown PENNCROSS

BENTGRASS SOD

CALL 800-USA-TURF (872-8873) or 717-898-5000



CIRCLE #154

Clearly Affordable Two-Way Radios By Motorola Radius

- LOW COST: RADIOS START AT \$235.00
- UP TO THREE-YEAR WARRANTY
- IMMEDIATE DELIVERY
- TRADE-INS ACCEPTED
- FREE TWO-WEEK TRIAL
- VARIABLE POWER MODELS AVAILABLE

1-800-527-1670

*Actual trade-in allowance depends on make and model of unit being traded in.

PAGECOM

Page-Com, Inc. 10935 Alder Circle, Dallas, Texas 75238 (214) 348-0382

CIRCLE #156



EXCEL

BRIDGE MANUFACTURING CO.

Golf Course Bridges are our specialty! We fabricate easy-to-install, pre-engineered spans and deliver them anywhere in the U.S.A. Call today for a free consultation.

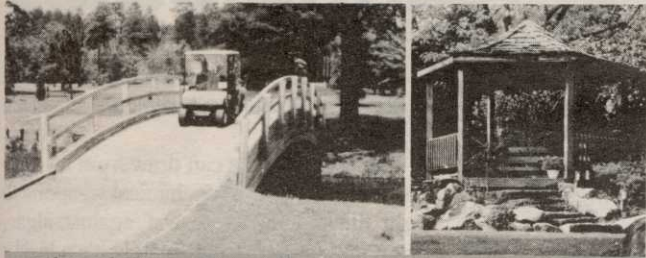
800/548-0054

12001 SHOEMAKER AVENUE, SANTA FE SPRINGS, CALIFORNIA
213/944-0701 FAX 213/944-4025

CIRCLE #158

Golf Course Marketplace

To reserve space in this section, call Simone Lewis, 813-576-7077



Glued-Laminated WOOD STRUCTURES

Order Direct From The Leading Manufacturer in U.S.
 • Complete Prefabricated Packages • Ready for Fast Erection
 • Direct Distribution Throughout the U.S. • Custom Design & Engineering

UNIT STRUCTURES, INC. CALL
 P.O. BOX A MORRISVILLE, N.C. 27560 1-800-777-UNIT

CIRCLE #159

willadsen scale models

Custom Models
for the
Golf Industry

555 whitehall street s.w.
atlanta, ga. 30303 (404) 658-1704

CIRCLE #161

Tulip Colorblends... Nature's Fireworks®
A flower display you can put on.

SCHIPPER & CO.
Wholesale Bulbgrowers and Exporters
1616ZG Hoogkarspel, Holland



USA Address: P.O. Box 236, Haddonfield, NJ 08033
Toll Free: 1 800-TPP-TOES or 1 800-877-8637

"Our Roots Are Bulbs"

CIRCLE #163

MOWER MATE®



U.S. & Foreign Patents Pending. Canadian Pat. #66639
Protect your greensmower from damage due to transport
from green to green. Our exclusive 3-point clamping
system suspends your reel, bed-knife, verticutter &
differential. Call or write for details.

**BELL TURF
EQUIPMENT**

316 Blossom Hill Rd.
San Jose, CA 95123
(408) 972-5061

CIRCLE #165

Modular Golf Course Markers

- for
- OUT-OF-BOUNDS MARKERS
 - YARDAGE MARKERS
 - GROUND UNDER REPAIR MARKERS
 - ⊕ TEE MARKERS
 - HAZARD MARKERS

SEE OUR NEW "PATH MINDERS"
Booth 3344, GCSAA SHOW
Las Vegas

For more information call Toll Free
1-800-969-5920

MARKERS, INC.

33597 Pin Oak Parkway, Avon Lake, OH 44012
Phone (216) 933-5927 FAX (216) 933-7839

CIRCLE #167

Keep Your Divot Seed Mixture Where It Is Used ...



... in Divot Seed & Soil tee
buckets next to the tee markers.
Available in Cedar or Redwood
slats and with companion
Trash™ debris buckets.



Ask Your Golf Course Distributor for
INNOVATIVE MAINTENANCE PRODUCTS

From

Master of the Links

P.O. Box 52 • Lombard, IL 60148-0052
(708) 627-8379 (MASTERY)



CIRCLE #160

SUNBELT PATH PAVERS

For maintenance free concrete paths
using the
"FAST TRACK" METHOD
Environmentally Sensitive & Economical

For more details, call
(904) 628-3141

P.O. Box 4228 • Homosassa Springs, FL 32647
Members GCSAA, GCBA, NGF

CIRCLE #162



Golf Course Bridges!

1-800-328-2047

**CONTINENTAL
BRIDGE**

Route 5, Box 178, Alexandria, MN 56308 • (612) 852-7500

Thousands in use.
Built to last.

Sponsor Member

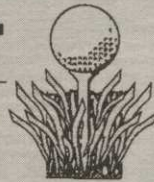


NATIONAL GOLF FOUNDATION B-DA-CL

CIRCLE #164

"NOVATEE"

The NOVATEE is a combination of specially
manufactured synthetic grass of commer-
cial quality. Its patented design, featuring
top dressing imbedded between the
fibers, allows golfers to tee up just
like on natural grass.



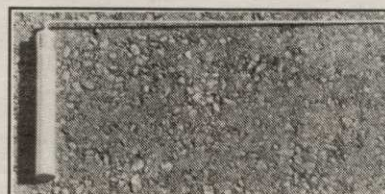
The NOVATEE is the state-of-the-art
synthetic tee surface for all courses & driving ranges.

Dealer inquiries requested.

PO/CP 533 CSL
Montreal, P.Q., Can. H4V 2Z1
514/486-1696
Fax 514/486-9927

SyntenniCo Inc.

CIRCLE #166



PIPE LOCATOR THE LOCAT™ INEXPENSIVE

Locates, traces underground pipes, including drain
pipes, made of PVC, ABS, steel and cement. Finds
sprinklers, valves and clogs.

Used by Hundreds of Golf Courses

Satisfaction Guaranteed

Bloch & Company
Box 18058, Cleveland, OH 44118
(216) 371-0979

CIRCLE #168

CALENDAR

Continued from page 52

announced. Contact LMA at 813-584-2312.
17-20 — Green Industry Expo in Tampa,
Fla. Contact Associated Landscape Contrac-
tors of America at 703-241-4004.

18-21 — Professional Lawn Care Associa-
tion of America Convention and Trade Show
in Tampa, Fla. Contact PLCAA at 404-977-
5222.

19-21 — Inland Northwest Turf and Land-
scape Conference and Trade Show in Spo-
kane, Wash. Contact show producers at 800-
729-5904.

December

3-4 — Southern Grounds and Turf Main-
tenance Expo in Myrtle Beach, S.C. Contact
show producers at 800-553-7702.

9-12 — Ohio Turfgrass Conference and
Trade Show in Cincinnati. Contact Ohio
Turfgrass Foundation at 614-292-2601.

* — For more information or to register,
contact Betsy Evans, education coordinator,
Golf Course Superintendents Association of
America, at 800-472-7878 or 913-841-2240.
The seminars are dependent upon the avail-
ability of the instructors, and are therefore
subject to change. One-day seminars cost \$100
for GCSAA members and \$120 for non-mem-
bers; two-day seminars cost \$180 for members
and \$210 for non-members.

Sheaffer

Continued from page 54

ganic fertilizer for the next algae crop. Fur-
thermore, this decomposition uses up a lot of
oxygen. Once all the oxygen is gone, decom-
position goes anaerobic and that releases the
methane and sulfur gasses that smell so bad.

"Properly employed, aeration alone can
cut down on odors by keeping dissolved
oxygen levels high enough to prevent
anaerobic decomposition. But aeration does
nothing to affect the levels of dissolved nutri-
ents that feed successive algae blooms. Aera-
tion can beat the water severely enough to
prevent green filamentous algae growth. But
it can't stop the blue-green algae that stay
suspended throughout the pond and contrib-
ute to a dark, murky appearance.

"Important for sewage treatment water is
the high levels of chlorine and other salts.
These cause grass damage when this water is
used for irrigation. Neither aeration nor
chemicals can remove these salts."

Sheaffer explained that his system, "re-
stores and renews the water by oxidizing
harmful organics and nutrients that build up
otherwise. It also oxidizes out salts like chlo-
rine. The activated oxygen destroys the ele-
ments that lead to so many problems.

"Additionally, we supply aeration at the
bottom to raise dissolved oxygen levels.
This prevents odors associated with
anaerobic decomposition and keeps nutri-
ents tied up in the bottom sediments. In-
stead of killing algae blooms, we keep the
nutrient levels low enough to prevent them
from ever occurring. We work to restore
water by creating a true ecological balance.
That includes plants, fish, plankton, etc."

Sheaffer said he has installed the system
on a dozen courses, primarily in California
and Arizona. The cost has ranged from
\$5,000 for a one-acre pond to \$120,000 for a
325-acre lake.

Hurdzan said the installation and \$80 to
\$100 per year maintenance costs are "very
reasonable." It also uses less electricity
than other systems, he added.

"In all honesty, there's no other treatment
method I have seen that is as effective, and
as cost effective, as the Sheaffer System,"
Alderman said.

Chris Loynd is a writer based in Milford, Conn.