

January  
 2-19 — Utility Turf Management/Home Lawn Care Management, at New Brunswick, N.J. Contact The Office of Continuing Professional Education at Cook College, 201-932-9271  
 3, 10, 17 — Selected Topics in Landscape Management, at New Brunswick, N.J. Contact The Office of Continuing Professional Education at Cook College, 201-932-9271.  
 3-4 — GCSAA seminar in St. Charles, Ill., on Environmental Management.\*  
 3-March 8 — Rutgers Turfgrass Management Certificate Program, at New Brunswick, N.J. Contact The Office of Continuing Professional Education at Cook College, 201-932-9271.  
 6-8 — Minnesota Nursery and Landscape Association Convention and Trade Show in Minneapolis, Minn. Contact MNLA at 612-633-4987.  
 6-10 — Golf Course Association's Ninth Annual Conference at the Registry Hotel in Naples, Fla. Contact the GCA at 8030 Cedar Ave., Suite 228, Minneapolis, Minn. 55425; 612-854-8482.  
 7-8 — GCSAA seminar in Birmingham, Ala., Weed Control.\*  
 7-9 — 25th Annual Tennessee Turfgrass Conference and Show at the Holiday Inn World's Fair in Knoxville, Tenn. Contact Donnie Callis, executive secretary, Tennessee Turfgrass Association, 533 Hagan St., Nashville, Tenn. 37203; 615-242-4600.  
 7-9 — 29th Annual Nebraska Turfgrass Conference at Holiday Inn Central, Omaha, Neb. Contact Don Ellerbee, Nebraska Turfgrass Foundation, 2727 W. Second St., P.O. Box 2118, Hastings, Neb. 68902-2118; 402-463-5418.  
 7-10 — 45th Annual Northeast Weed Science Society Meeting at Stouffer Harborplace Hotel in Baltimore, Md. Contact Bradley Majek at 609-455-3100.  
 7-10 — Virginia Professional Horticultural Conference and Trade Show in Virginia Beach. Contact show headquarters at 804-465-7777.  
 7-11 — Fifth Annual Ohio State University Golf Course Maintenance Short Course at Parke Hotel in Columbus, Ohio. Contact Sue White at 614-292-7457 for course content, or the Department of Conferences and Institutes at 614-292-4230 to register.  
 8-9 — Sixth Annual Wisconsin Turfgrass Association Winter Conference at the Olympia Village Resort in Oconomowoc. Contact Ed Devinger, Reinders Brothers, Inc., 13400 Watertown Plank Road, Elm Grove, Wis. 52122; 414-786-3301.  
 8-11 — Eastern Pennsylvania Turfgrass Conference and Trade Show at Valley Forge Convention Center, King of Prussia, Pa. Contact the Pennsylvania Turfgrass Council, Landscape Management Research Center, Orchard Road, University Park, Pa. 16802; 814-863-3475.  
 9 — GCSAA seminar in the Washington, D.C., area on Developing Your Hazard Communication Program.\*  
 9 — Lambert Landscape Co.'s Organic Warehouse and Soil Management Services will host its third annual Organic Landscaping and Growing Seminar in Dallas, Texas. It will cover environmental problems, basic organic programs, conversion from chemical to organic, organic pest control, soil balancing and other topics. Contact Barbara Smith at Lambert Landscape, telephone 214-239-0121.  
 9-11 — 29th Annual North Carolina Turfgrass Conference and Exhibit, Charlotte, N.C. Contact A.H. Bruneau, Box 7620, North Carolina State University, Raleigh, N.C. 27695-7620; 919-737-2326.  
 10-11 — New Hampshire Turf Conference

at the Center of New Hampshire in Manchester. Contact Tom Rowell, 5 Echo Ave., Portsmouth, N.H. 03801.  
 10-11 — GCSAA seminar in Pittsburgh, Pa., on Golf Course Restoration, Renovation and Construction Projects.\*  
 10-12 — The 21st Annual Georgia Turfgrass Conference and Trade Show at the Gerogia International Convention and Trade Center in Atlanta. Contact Conferences, Box 8112, Georgia Southern University, Statesboro, Ga. 30460; 912-681-5189.  
 13-18 — National Golf Foundation-National Institute of Golf Management at Oglebay Park, W.Va. Contact Oglebay at 304-243-4027.  
 14-15 — GCSAA seminar in Cromwell, Conn., on Disease Identification and Control.\*  
 14-17 — 31st Virginia Turfgrass Conference and Trade Show at the Richmond Centre and

Richmond Marriott Hotel. Contact Randeen Tharp at 804-340-3473.  
 15-17 — North Central Turfgrass Association Conference and Trade Show in Fargo, N.D. Contact NCTGA at 701-232-0215.  
 16 — Professional Turf and Landscape Conference and Trade Show in White Plains, N.Y. Contact New York Turf and Landscape Association at 914-636-2875.  
 17-19 — 1991 Mid-America Horticultural Trade Show at the Hyatt Regency Chicago. Sponsored by the Illinois Nurserymen's Association, Illinois Landscape Contractors Association, and Wisconsin Landscape Federation, the show is endorsed by the Indiana Association of Nurserymen and the Iowa Nurserymen's Association. Contact Mid-Am Trade Show, 1000 N. Rand Road, Suite 214, Wauconda, Ill. 60084; 708-526-2010.

20-23 — Landscape Magic 91 in Lake Buena Vista, Fla. Contact Walt Disney World Seminar Productions at 407-363-6620.  
 21-23 — The 61st Annual Michigan Turfgrass Conference at Clarion Hotel and Conference Center in Lansing, Mich. Contact Michael Saffel, 584G Plant and Soil Sciences Building, Department of Crop and Soil Sciences, Michigan State University, East Lansing, Mich. 48824; 517-353-9022.  
 21-23 — Midwest Regional Turf Conference and Trade Show at Adam's Mark Hotel & Conference Center, Indianapolis, Ind. Contact Jeff Lefton, Agronomy Department, Purdue University, West Lafayette, Ind. 47907; 317-494-9737.  
 22 — Golf Course Superintendents Association of New England annual meeting at

Continued on page 50

## Southern Concrete Pavers is Proud to Announce Our Installation Service is Now Offered Worldwide.



Patented and manufactured by Southern Concrete Pavers. US Patent #4878778

Thinking about redoing or installing a cart path system on your course? Whatever your cart path needs are, we can do it.

SOUTHERN CONCRETE PAVERS, with its experienced crews using the PATHPAVER™, can install a complete cart path system with scoring and brooming on your course, in most cases, in less than 30 days for less than the cost of asphalt construction! Rental and leasing programs are available. Don't delay... Call today.

**1-800-833-3014**

**QUALITY AND SERVICE ARE OUR CONCERN**

**1581 W. Gulf to Lake Hwy., Lecanto, Florida 32661. Fax 1-904-746-4006**

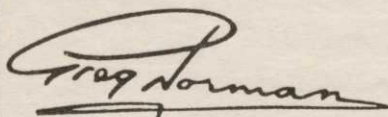
Now an office in California to better serve the western states.

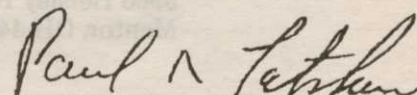
CIRCLE #141/GCSAA BOOTH #1440

## ATTENTION!!

Two of the most respected names in Golf are involved with a **New Revolutionary Product** that stops Green and Tee Encroachment.

See it's debut at the  
**1991 GCSAA International Show**  
**Las Vegas**  
**February 10 - 12 1991**  
**Booth 3800**

  
 Greg Norman

  
 Paul R. Latshaw

**Greens Encroachment Barrier Systems Inc.**  
 Patent Allowed • All Rights Reserved



Continued from page 49

Blue Hill Country Club in Canton, Mass. Contact President Paul Miller, 1 Leicester Road, Marblehead, Mass. 01945; 508-369-5704.

22-23 — Fifth Annual Inland Northwest Turf and Landscape Conference and Trade Show at the Spokane-Sheraton and the Spokane (Wash.) Convention Center. The event is sponsored by Washington State University Cooperative Extension and the Inland Empire Golf Course Superintendents Association. Contact Jones and Associates, Park Center, Suite 200, N. 908 Howard St., Spokane, Wash. 99201-2261; 509-327-5904.

23 — Arizona Spring Nursery and Landscape Show in Phoenix. Contact show producers at 916-488-6434.

24-26 — Idaho Horticultural Convention and Trade Show in Boise, Idaho. Contact

Idaho Nurserymen's Association at 800-462-4769.

25 — Annual Mid-Florida Turfgrass Conference at Seminole Community College in Sanford. Contact the University of Florida Cooperative Extension Service, Uday K. Yadav; 407-323-2500, ext. 5559.

25-28 — PGA Merchandise Show in Orlando, Fla. For information call 800-283-GOLF.

29-30 — Ohio State University Athletic Fields/Sportsturf Seminar at Parke Hotel in Columbus, Ohio, emphasizing principles of agronomy, soils, entomology and plant pathology. Contact Sue White at 614-292-7457 for course content, or the Department of Conferences and Institutes at 614-292-4230 to register.

30-Feb. 1 — International Society of Arboriculture Conference in Oklahoma City,

Okla. Contact convention organizers at 918-622-7513.

31 — Southern California Spring Horticultural Trade Show in Pomona, Calif. Contact show producers at 916-488-6434.

February

5-12 — 62nd Annual International Golf Course Conference and Show, sponsored by the Golf Course Superintendents Association, in Las Vegas, Nev. Contact the GCSAA at 1617 St. Andrews Drive, Lawrence, Kansas; 913-841-2240.

6-7 — Garden State Nursery and Landscape Conference and Trade Show in Somerset, N.J. Contact the New Jersey Nursery and Landscape Association at 609-737-0890.

15-16 — Association of Professional Landscape Designers Annual Meeting and Sym-

posium in Bethesda, Md. Contact Environmental Design at 301-652-1212.

19-21 — Northeastern Pennsylvania Turfgrass and Grounds Maintenance School in Nanticoke. Contact William Pencek at 717-963-4761.

21 — Pennsylvania Golf Course Owners executive board meeting in Monroeville. Contact President Carol Nill at 1322 Penhurst Drive, McKeesport, Pa. 15135; 412-751-0852.

21-22 — Landscape Industry Conference and Trade Show in Denver, Colo. Contact Associated Landscape Contractors of Colorado at 303-425-4862.

22-23 — American Landscape Maintenance Association Expo in St. Petersburg, Fla. Contact ALMA at 800-992-ALMA.

26-27 — Irrigation Part I seminar, sponsored by GCSAA, in Seattle, Wash.\*

26-28 — Western Pennsylvania Turf Conference and Trade Show in Monroeville. Contact the Pennsylvania Turfgrass Council at 814-863-3475.

28-March 1 — GCSAA seminar in Cincinnati, Ohio, on Landscape Design and Materials.\*

March

10-12 — Ohio State Golf Course Owners Conference in Akron. Contact Allan Whaling at 614-889-1593.

12 — Seminar on Recent Developments in Turfgrass Disease and Control by Dr. Houston Couch in Edmonton, Alberta, Canada. Contact the Canadian Golf Superintendents Association, 203-2000 Weston Road, Weston, Ontario M9N 1X3; 800-387-1056.

12-13 — GCSAA seminar in Philadelphia, Pa., on Environmental Considerations in Golf Course Management.\*

13-14 — Reinders Brothers, Inc.'s 10th Turf Conference, Equipment Show and Service Clinic at Waukesha (Wis.) Expo Center. Contact Ed Devinger at 13400 Watertown Plank Road, Elm Grove, Wis. 53122; 414-786-3301.

15 — Seminar, "Update on Pesticides and Spraying Calibrations," by Dr. Chris Hall in Hamilton, Ontario, Canada. Contact the Canadian Golf Superintendents Association,

Continued on page 52



# Professional turf performers.



First-rate disease and weed control demands a professional's touch. And here are the Turf Care products that have what it takes.

**Daconil 2787.**® The cornerstone of a professional spray program. Daconil 2787 is economical to use and the most effective, broadest-spectrum turf fungicide on the market. Controls 12 major turfgrass diseases. Available as a flowable or wettable powder formulation.

**Daconil 2787 WDG.** A new water-dispersible granular formulation that is virtually dust-free. Pouring and mixing are fast and easy. The 5-lb. reclosable container means better handling, storage and disposal.

**Dacthal.**® The preemergence herbicide that consistently delivers superior broad-spectrum control of crabgrass, spurge and 22 other tough annual grasses and broadleaf weeds. Available as a flowable or wettable powder formulation.

**Daconate 6.** The proven postemergent herbicide. Highly effective against pesky weeds such as crabgrass. (Sold as Bueno® 6 in western states only.)

**2 Plus 2 (MCP + 2,4-D Amine).** As effective as it is economical against more than 20 hard-to-kill broadleaf weeds such as clover and dandelions. Contains no dicamba.

**Frigate**® adjuvant. The only product specifically formulated to enhance the performance of Roundup\* for control of perennial and annual weeds. For turf renovations and non-cropland use, too.

When it comes to turf care, you'll see the difference in the professional's touch.

**Fermenta ASC Corporation,**  
5966 Heisley Road, P.O. Box 8000,  
Mentor, OH 44061-8000.

# The Turf Care® pros.

\*Roundup is a registered trademark of Monsanto Company. Always follow label directions carefully when using turf chemicals.

## GOLF ISN'T ALWAYS A GAME. Sometimes, It's A Business

Constructing or redesigning a golf course, hiring staff, negotiating contracts, financing and operations. This is when golf isn't a game and requires the assistance from experts with hands-on experience in every aspect of golf and country clubs.

Fraser Golf Consultants can tell you what is absolutely essential to the success of your course—and what is not.

For a free FGC brochure and information call

### FRASER GOLF CONSULTANTS

609-641-7575.

James Fraser, Pres. Douglas Fraser, V.P.  
One Leo Fraser Dr., Northfield, NJ 08225



Continued from page 50

203-2000 Weston Road, Weston, Ontario M9N 1X3; 800-387-1056.

18-19 — GCSAA seminar in Minneapolis, Minn., on Public Relations and Public Speaking.\*

21 — GCSAA seminar in Milwaukee, Wis., on Safe Pesticide Management.\*

24 — Seminar on Soil Modifications in Montreal, Quebec, Canada, by Dr. Donald Waddington. Contact the Canadian Golf Superintendents Association, 203-2000 Weston Road, Weston, Ontario M9N 1X3; 800-387-1056.

25-26 — GCSAA seminar in Indianapolis, Ind., on Integrated Pest Management.\*

April

11-14 — Golf Asia '91, the first international golf show for the Asia-Pacific region, at the World Trade Centre in Singapore. Contact Zainal Abidin Shah, exhibition manager, at Connex Private Ltd., 3015A Ubi Road 1 #05-11/12, Kampong Ubi Industrial Estate, Singapore 1440; telephone 7489696.

16-17 — GCSAA seminar in Palm Springs, Calif., on Disease Identification and Control.\*

18-19 — Landscape Industry Show/Greentech 91 in Long Beach, Calif. Contact California Landscape Contractors Association at 916-448-2522.

22-24 — Golf Development Expo in Palm Springs, Calif. Contact Crittenden Research Institute, Inc., P.O. Box 1150, Novato, Calif. 9448; 800-443-8318.

July

28-30 — International Lawn, Garden and Power Equipment Expo 91 in Louisville, Ky. Contact Expo Hot Line at 800-558-8767.

August

7 — Illinois Landscape Contractors Association Summer Field Day in St. Charles, Ill. Contact ILCA at 708-932-8443.

8 — MNLA Summer Meeting and Trade Show in St. Paul, Minn. Contact Minnesota Nursery and Landscape Association at 612-633-4987.

16-18 — TAN-MISSLARK Regional Nursery and Garden Supply Show in Dallas. Contact Texas Association of Nurserymen at 512-280-5182.

25-27 — National Lawn, Garden and Power Equipment Showcase in Toronto, Ontario, Canada. Contact show producers at 705-741-2536.

September

1-3 — International Garden Trade Fair in Cologne, Germany. Contact show producers at 212-974-8836.

13-15 — Florida Nursery and Allied Trades Show in Orlando, Fla. Contact FNGA at 407-345-8137.

15-17 — GMA Show-International Professional Lawn, Garden and Outdoor Power Equipment Exhibition in Kempton Park, United Kingdom. Contact Andry Montgomery Group at 502-473-1992.

16-19 — Northwest Turfgrass Conference and Exhibition in Couer d'Alene, Idaho. Contact NTA at 206-754-0825.

November

5-6 — Indiana State Lawn Care Association Conference and Show in Indianapolis. Contact ISLCA at 317-575-9010.

5-8 — New York State Turfgrass Association Turf and Grounds Exposition in Rochester, N.Y. Contact NYSTA at 800-873-TURF.

10-13 — International Irrigation Exposition in San Antonio, Texas. Contact The Irrigation Association at 703-524-1200.

14-16 — Landscape Maintenance Association Meeting and Demo at a site to be

Continued on page 53

# Golf Course Marketplace

To reserve space in this section, call Simone Lewis, 813-576-7077



## Colorado Lining Company

Lining Products and Service

Custom Fabrication  
and Installation

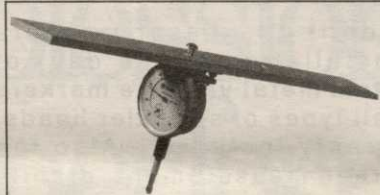
- Reservoirs ● Decorative Ponds
- Tailings Dams ● Landfill Liners
- Irrigation Ponds ● Tank Liners
- Golf Course Ponds

20, 30, 40 Mil P.V.C.  
20 → 100 Mil H.D.P.E.  
30 → 80 Mil V.L.D.P.E.

**CALL (303) 841-2022**

1062 Singing Hills Rd., Parker, CO 80134

CIRCLE #151



### ACCU-GAGE

Accu-gage is a precision measuring instrument for making highly accurate height-of-cut adjustments on greensmowers or other precision mowers.

—FEATURES—

- Adjustments can be made with the gage on the mower. Simply read the gage while turning the adjusting knob.
- Measurements are made at the front edge of the bedknife regardless of bedknife wear.
- Eliminates the inaccurate "feel" method of old-type adjusting bars.
- Available in 15", 18" and 24" bars.

For more information on this and other precision tools call Toll Free:  
1-800-253-2112 / In Michigan call Collect: 313-429-9571

PRECISION TOOL PRODUCTS CO. 7836 Bethel Church Rd. • Saline, MI 48176

CIRCLE #153



### GROOMER

**GAGE . . . is a precision measuring instrument for accurately setting the desired grooming depth on groomer or verticutter units.**

For more information on this and other precision tools call Toll Free:  
1-800-253-2112 / In Michigan call Collect: 313-429-9571

PRECISION TOOL PRODUCTS CO. 7836 Bethel Church Rd. • Saline, MI 48176

CIRCLE #155



### NEW ROPE-LOC™

Finally, a rope and stake system that works! Simple but unique . . . the ROPE-LOC system eliminates annoying or unsightly rope failures. Simple, clean, durable — ROPE-LOC stakes are made of 3/8" steel and finished in attractive

yellow epoxy coating.

As shown in the blow-up, rope is securely "wedged" in place.

Call for a special introductory offer.

1-800-253-2112 / In Michigan call Collect: 313-429-9571

PRECISION TOOL PRODUCTS CO. • 7836 Bethel Church Rd. • Saline, MI 48176

CIRCLE #157

## FIX YOUR DRY SPOTS



This Handi Airifier™ has seven 1/2" tines and attaches to your old cup cutter.

**800-456-4351**

### Miltona Turf Products

P.O. BOX 164 • MILTONA, MINNESOTA 56354

CIRCLE #150



### Motorola Radius® 2-Way Radios

P10 VHF 1 Watt = \$189 P50 VHF 5 Watt = \$275

Chest Harnesses: \$26. Also- Metal detectors, marking paint, flagging, levels, wire flags, distance measurers, etc.

**1-800-533-3886**



Maine surveyors' service, inc.

28 U.S. Route One  
Yarmouth, ME 04096

CIRCLE #152

Poa Free

Pennsylvania Grown PENNCROSS

## BENTGRASS SOD

CALL 800-USA-TURF (872-8873) or 717-898-5000



CIRCLE #154

## Clearly Affordable Two-Way Radios By Motorola Radius

- LOW COST: RADIOS START AT \$235.00
- UP TO THREE-YEAR WARRANTY
- IMMEDIATE DELIVERY
- TRADE-INS ACCEPTED
- FREE TWO-WEEK TRIAL
- VARIABLE POWER MODELS AVAILABLE

**1-800-527-1670**

\*Actual trade-in allowance depends on make and model of unit being traded in.

**PAGECOM**

Page-Com, Inc. 10935 Alder Circle, Dallas, Texas 75238 (214) 348-0382

CIRCLE #156



## EXCEL

BRIDGE MANUFACTURING CO.

Golf Course Bridges are our specialty! We fabricate easy-to-install, pre-engineered spans and deliver them anywhere in the U.S.A. Call today for a free consultation.

**800/548-0054**

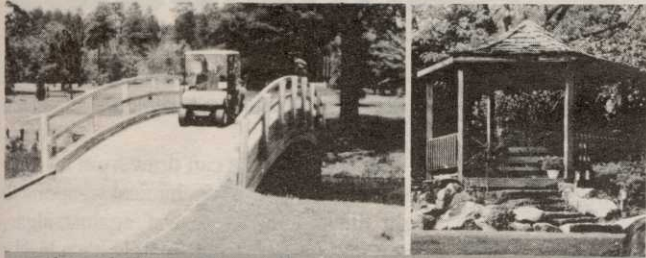
12001 SHOEMAKER AVENUE, SANTA FE SPRINGS, CALIFORNIA  
213/944-0701 FAX 213/944-4025

CIRCLE #158



# Golf Course Marketplace

To reserve space in this section, call Simone Lewis, 813-576-7077



## Glued-Laminated WOOD STRUCTURES

Order Direct From The Leading Manufacturer in U.S.  
 • Complete Prefabricated Packages • Ready for Fast Erection  
 • Direct Distribution Throughout the U.S. • Custom Design & Engineering

**UNIT STRUCTURES, INC.** CALL  
 P.O. BOX A MORRISVILLE, N.C. 27560 1-800-777-UNIT

CIRCLE #159

## willadsen scale models

Custom Models  
for the  
Golf Industry

555 whitehall street s.w.  
atlanta, ga. 30303 (404) 658-1704

CIRCLE #161

Tulip Colorblends... Nature's Fireworks®  
A flower display you can put on.

**SCHIPPER & CO.**  
Wholesale Bulbgrowers and Exporters  
1616ZG Hoogkarspel, Holland



USA Address: P.O. Box 236, Haddonfield, NJ 08033  
Toll Free: 1 800-TTP-TOES or 1 800-877-8637

"Our Roots Are Bulbs"

CIRCLE #163

## MOWER MATE®



U.S. & Foreign Patents Pending. Canadian Pat. #66639  
Protect your greensmower from damage due to transport  
from green to green. Our exclusive 3-point clamping  
system suspends your reel, bed-knife, verticutter &  
differential. Call or write for details.

**BELL TURF  
EQUIPMENT**

316 Blossom Hill Rd.  
San Jose, CA 95123  
(408) 972-5061

CIRCLE #165

## Modular Golf Course Markers

- for
- OUT-OF-BOUNDS MARKERS
  - YARDAGE MARKERS
  - GROUND UNDER REPAIR MARKERS
  - ⊕ TEE MARKERS
  - HAZARD MARKERS

SEE OUR NEW "PATH MINDERS"  
Booth 3344, GCSAA SHOW  
Las Vegas

For more information call Toll Free  
1-800-969-5920

**MARKERS, INC.**

33597 Pin Oak Parkway, Avon Lake, OH 44012  
Phone (216) 933-5927 FAX (216) 933-7839

CIRCLE #167

## Keep Your Divot Seed Mixture Where It Is Used ...



... in Divot Seed & Soil tee  
buckets next to the tee markers.  
Available in Cedar or Redwood  
slats and with companion  
Trash™ debris buckets.



Ask Your Golf Course Distributor for  
**INNOVATIVE MAINTENANCE PRODUCTS**

From

*Master of the Links*

P.O. Box 52 • Lombard, IL 60148-0052  
(708) 627-8379 (MASTERY)



CIRCLE #160

## SUNBELT PATH PAVERS

For maintenance free concrete paths  
using the  
"FAST TRACK" METHOD  
Environmentally Sensitive & Economical

For more details, call  
**(904) 628-3141**

P.O. Box 4228 • Homosassa Springs, FL 32647  
Members GCSAA, GCBA, NGF

CIRCLE #162



## Golf Course Bridges!

1-800-328-2047

**CONTINENTAL  
BRIDGE**

Route 5, Box 178, Alexandria, MN 56308 • (612) 852-7500

Thousands in use.  
Built to last.

Sponsor Member

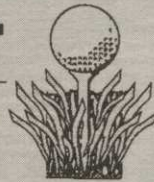


NATIONAL GOLF FOUNDATION B-DA-CL

CIRCLE #164

## "NOVATEE"

The **NOVATEE** is a combination of specially  
manufactured **synthetic grass** of commer-  
cial quality. Its patented design, featuring  
top dressing imbedded between the  
fibers, allows golfers to tee up just  
like on natural grass.



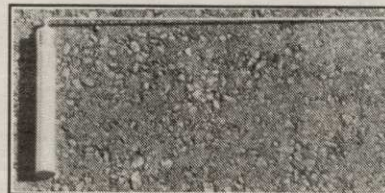
The **NOVATEE** is the state-of-the-art  
synthetic tee surface for all courses & driving ranges.

Dealer inquiries requested.

PO/CP 533 CSL  
Montreal, P.Q., Can. H4V 2Z1  
514/486-1696  
Fax 514/486-9927

**SyntenniCo Inc.**

CIRCLE #166



## PIPE LOCATOR THE LOCAT™ INEXPENSIVE

Locates, traces underground pipes, including drain  
pipes, made of PVC, ABS, steel and cement. Finds  
sprinklers, valves and clogs.

Used by Hundreds of Golf Courses

Satisfaction Guaranteed

**Bloch & Company**  
Box 18058, Cleveland, OH 44118  
(216) 371-0979

CIRCLE #168

## CALENDAR

Continued from page 52

announced. Contact LMA at 813-584-2312.  
17-20 — Green Industry Expo in Tampa,  
Fla. Contact Associated Landscape Contrac-  
tors of America at 703-241-4004.

18-21 — Professional Lawn Care Associa-  
tion of America Convention and Trade Show  
in Tampa, Fla. Contact PLCAA at 404-977-  
5222.

19-21 — Inland Northwest Turf and Land-  
scape Conference and Trade Show in Spo-  
kane, Wash. Contact show producers at 800-  
729-5904.

## December

3-4 — Southern Grounds and Turf Main-  
tenance Expo in Myrtle Beach, S.C. Contact  
show producers at 800-553-7702.

9-12 — Ohio Turfgrass Conference and  
Trade Show in Cincinnati. Contact Ohio  
Turfgrass Foundation at 614-292-2601.

\* — For more information or to register,  
contact Betsy Evans, education coordinator,  
Golf Course Superintendents Association of  
America, at 800-472-7878 or 913-841-2240.  
The seminars are dependent upon the avail-  
ability of the instructors, and are therefore  
subject to change. One-day seminars cost \$100  
for GCSAA members and \$120 for non-mem-  
bers; two-day seminars cost \$180 for members  
and \$210 for non-members.

## Sheaffer

Continued from page 54

ganic fertilizer for the next algae crop. Fur-  
thermore, this decomposition uses up a lot of  
oxygen. Once all the oxygen is gone, decom-  
position goes anaerobic and that releases the  
methane and sulfur gasses that smell so bad.

"Properly employed, aeration alone can  
cut down on odors by keeping dissolved  
oxygen levels high enough to prevent  
anaerobic decomposition. But aeration does  
nothing to affect the levels of dissolved nutri-  
ents that feed successive algae blooms. Aera-  
tion can beat the water severely enough to  
prevent green filamentous algae growth. But  
it can't stop the blue-green algae that stay  
suspended throughout the pond and contrib-  
ute to a dark, murky appearance.

"Important for sewage treatment water is  
the high levels of chlorine and other salts.  
These cause grass damage when this water is  
used for irrigation. Neither aeration nor  
chemicals can remove these salts."

Sheaffer explained that his system, "re-  
stores and renews the water by oxidizing  
harmful organics and nutrients that build up  
otherwise. It also oxidizes out salts like chlo-  
rine. The activated oxygen destroys the ele-  
ments that lead to so many problems.

"Additionally, we supply aeration at the  
bottom to raise dissolved oxygen levels.  
This prevents odors associated with  
anaerobic decomposition and keeps nutri-  
ents tied up in the bottom sediments. In-  
stead of killing algae blooms, we keep the  
nutrient levels low enough to prevent them  
from ever occurring. We work to restore  
water by creating a true ecological balance.  
That includes plants, fish, plankton, etc."

Sheaffer said he has installed the system  
on a dozen courses, primarily in California  
and Arizona. The cost has ranged from  
\$5,000 for a one-acre pond to \$120,000 for a  
325-acre lake.

Hurdzan said the installation and \$80 to  
\$100 per year maintenance costs are "very  
reasonable." It also uses less electricity  
than other systems, he added.

"In all honesty, there's no other treatment  
method I have seen that is as effective, and  
as cost effective, as the Sheaffer System,"  
Alderman said.

Chris Loynd is a writer based in Milford, Conn.