

GCSAA International Golf Course Conference and Show

Following is a brief schedule of the one- and two-day educational courses, and the seminars planned for the Golf Course Superintendents Association of America's 62nd International Golf Course Conference and Show in Las Vegas, Nev.

The conference will be held at the Las Vegas Convention Center, Feb. 5-12. "R" designates the Riviera Hotel and "F" the Flamingo Hilton Hotel.

speaking (F)
Turfgrass insects: basic and advanced principles (R)
Turfgrass identification and utilization (F)
Union labor relations/NLRB regulations (F)

FRIDAY, FEB. 8
8 A.M. - 5 P.M.

Two-Day Seminars Continue

One-Day Seminars (R)
Certification exam study guidelines
Golf course safety, security and risk management
Scouting, sampling and monitoring golf course pests

CONCURRENT EDUCATIONAL SESSIONS

SATURDAY, FEB. 9 (R)

Golf Course Management Techniques: Part I
8:30 A.M. - You are only as good as your interpreter
8:50 - Tees and me
9:10 - Bunker renovation or course remodeling
9:30 - Development of a driving range
9:50 - Management skills that lead to success

10:20 - Building a jewel in the desert
10:40 - Creation of "the mirage" landscape
11:00 - Water injection research
11:20 - The ins and outs of deep aeration
11:40 - Golf course management in the Southern Hemisphere

MANAGING TODAY'S ENVIRONMENT

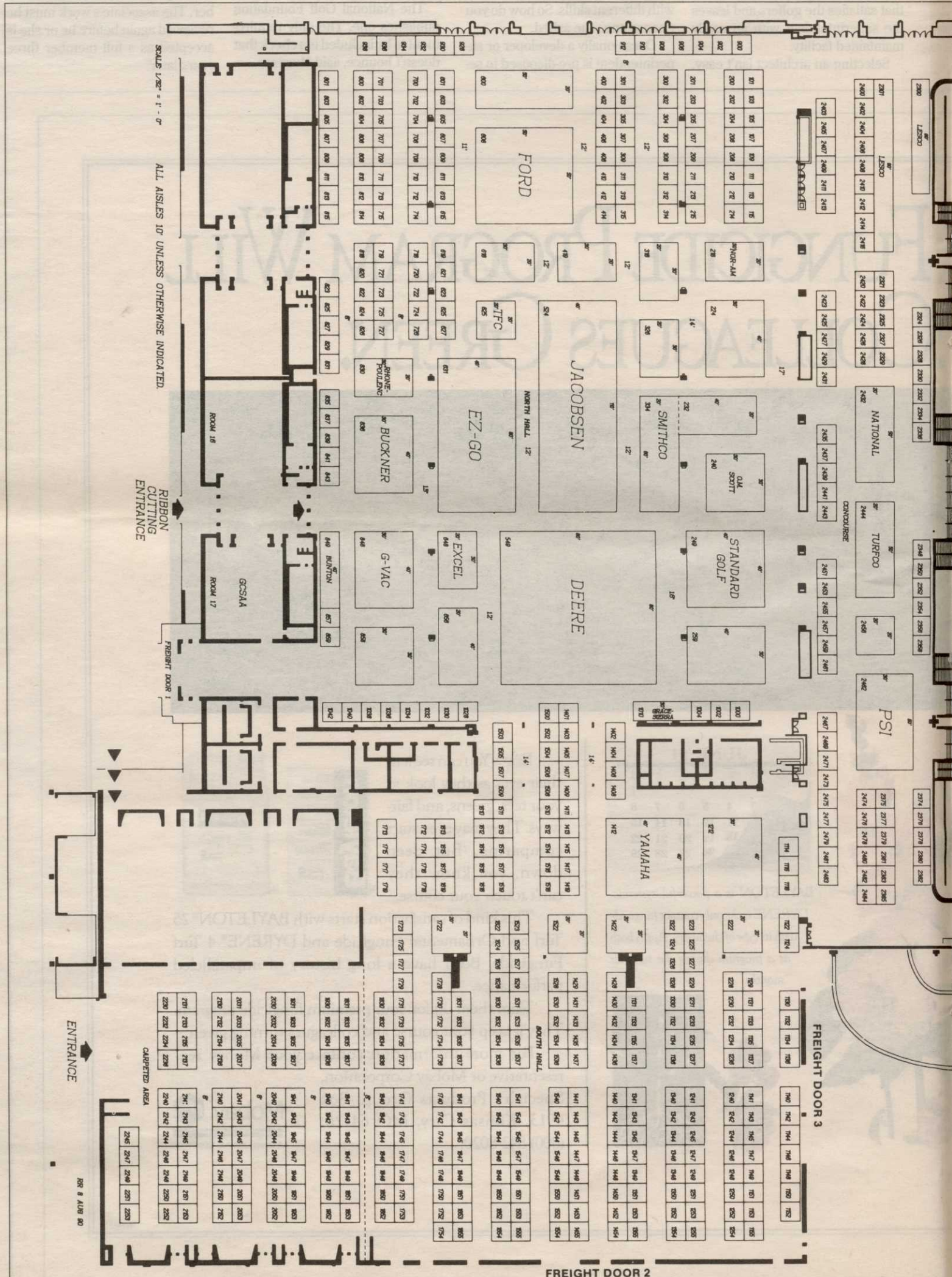
TUESDAY, FEB. 5 (RIVIERA)
8 A.M. - 5 P.M.
Developing your hazard communication program
Safe pesticide management
USGA golf course rating system

TUESDAY AND WEDNESDAY FEB. 5 AND 6 (R)
8 A.M. - 5 P.M.
Two-Day Seminars Continue
One-Day Seminars
Basic principles of turfgrass management
Basic turfgrass botany and physiology
Golf car fleet operations
Golf course construction techniques and management
Integrated pest management
Introduction to soil science
Irrigation I: system component technology
Landscape design and plant materials
Weed control

WEDNESDAY, FEB. 6 (R)
8 A.M. - 5 P.M.
Budgeting and forecasting
Effective business writing
Maximizing job satisfaction

THURSDAY, FEB. 7 (R)
8 A.M. - 5 P.M.
Calculations and practical mathematics in golf course management
Cardiopulmonary resuscitation
Financial management
Negotiating
Preparing your golf course for a major tournament
Underground storage tank selection and installation
USGA intermediate rules of golf
Water quality and irrigation scheduling

THURSDAY AND FRIDAY FEB. 7 AND 8
8 A.M. - 5 P.M.
Business communication and assertiveness techniques (Flamingo)
Disease identification and control (R)
Environmental considerations in golf course management (F)
Golf course design principles (F)
Golf course restoration, renovation and construction projects (R)
Insect pests on golf course trees (F)
Introduction to surveying (R)
Irrigation: system design operations and management (R)
Managerial productivity (R)
Plant nutrition and fertilizers (F)
Protection of water resources (F)
Public relations and public



Show packed with educational talks, workshops

8:30 - Managing today's environment: an overview
 8:50 - Water quality, media relations and the Cape Cod study
 9:10 - Don't bag it
 9:30 - Golf course composting operations
 9:50 - Wetlands: considerations in the construction and management of new golf courses
 10:20 - Crisis communication:

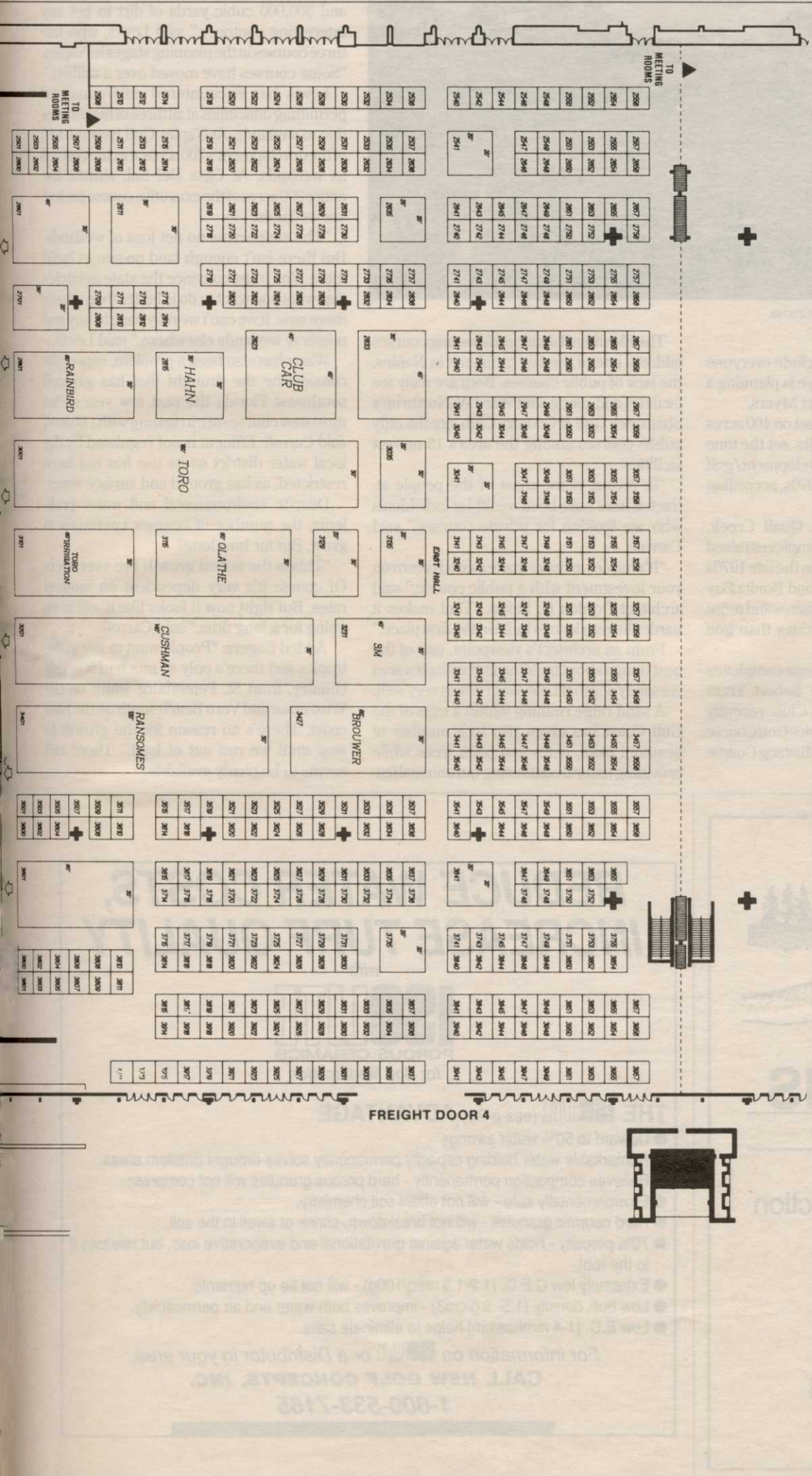
dealing with your members and the media.
 10:40 - Low chemical landscape management
 11:00 - Herbicide mobility in turfgrass
 11:20 - The facts: Vermont model regulations for golf course management plans
 Southern Turfgrass Management
 8:30 - Developing improved

bermudagrass and centipede grass
 8:50 - Developing the optimum cultivation program
 9:10 - Color retention in warm-season grasses
 9:30 - Trends for potassium use on bermudagrass
 9:50 - Managing turf to maximize cold tolerance
 10:20 - Bermuda encroachment into bentgrass greens

10:40 - Turf management on the slope and in the shade
 11:00 - Modified USGA greens: why they're not worth it
 11:20 - Hydrosprigging techniques
 11:40 - Manage job stress: trade frustration for results
GOLF COURSE MANAGEMENT TECHNIQUES: PART II
 1:00 - Water-hogging turf: fact or fancy
 1:20 - Turf growth regulators for poa annua
 1:40 - Rolling turf: effects on soils
 2:00 - Varieties for converting fairways to bentgrass
 2:20 - Subsurface application of pesticides and biological controls
 2:50 - Leaching of organics: fertilizers and pesticides
 3:10 - Animal pest problems and recommended controls
 3:30 - Microbiology of minor root pathogens and nonpathogens in high-sand content greens
 3:50 - The right plant for the right location
 4:10 - New concepts on tree planting
LEGAL QUESTIONS AND CONCERNS
 1:00 - Legal questions about job contracts
 1:40 - Wrongful termination: avoiding a lawsuit
 2:00 - Using retired folks for labor

2:20 - State politics made easy
 2:50 - The liabilities of owning and operating a golf course
 3:10 - Liability for chemical damage
 3:30 - Tree hazards and professional liability
 3:50 - Educating club officials on regulations and liabilities
WATER ISSUES
 1:00 - Golf course irrigation the '90s
 1:20 - Flood management
 1:40 - Effluent irrigation of turfgrass
 2:00 - Surviving the California drought
 2:20 - Building a water coalition
 2:50 - How to handle your friendly local regulator
 3:10 - Landscape water audits: helping good water managers become better
 3:30 - Developing a plan to reduce water usage
 3:45 - Methods for complying with water allotments
 4:10 - "Water, water everywhere and not a drop ..."

To register for the conference and show, people should contact the GCSAA at 1617 St. An draws Drive, Lawrence, Kansas; telephone 913-841-2240.



Advertisers' booth numbers at GCSAA show

Advertiser	Booth #
Airlake Aeration	3546
B.H.Sales	3741
Barebo, Inc.	837-843
Bell Turf Equip.	1242,1244
Best Sand	1240
Ciba-Geigy	656
Club Car	2823
Continental Bridge	2826,2828
E-Z-GO	631
Excel Bridge Mfg.	1732
Fermenta	1412,1414
Flexalon	2414
Fore Par	619-623
Fuerst Brothers	3616
Golf Course News	3732
Goossen Industries	2750,2752
Grace-Sierra	1010
Greens Encroachment Barrier Sys.	3800
Hoechst-Roussel	2635
Jacklin Seed Co.	3535,3537
Jacobsen	524
John Deere	549
Lebanon Turf Products	625,627
Markers, Inc.	3344
Master of the Links	3622,3624
Milona Turf Products	2520-2524
Mobay	2348-2352
Nearby Mfg.	212
O.M. Scott	240
Oregon Fine Fescue Comm.	712
Page Com	2473,2475
Par Aide	2701
Perfection Sprinkler	1254
Precision Small Engine	3800
Precision Tool Co.	2624,2626
Rhone-Poulenc	830
Ringer	1522
Southern Concrete	1440
Standard Golf	249
Syntennico	2544,2549
The Andersons	824,826
Toro Comm'l. Prod. Div.	3001
Turf Seed	718-724
Unit Structures	1833