

Doral's Red course re-opens Sept. 23 after renovation

MIAMI — The Red golf course at Doral Resort and Country Club is undergoing a major renovation, which was designed by the original course architect Robert Von Hagge.

When the course re-opens Sept. 23, its yardage (6,167) will remain the same but the grass, contour and elevation of each hole will be completely changed.

Instead of the flat fairways will be rolling fairways that are slightly narrower and decidedly more challenging. To further enhance play, all sand bunkers will be reshaped and six new ones added.

The grass on the fairways is being replaced by a new hybrid strain of Bermudagrass that is both disease- and pest-resistant. Greens are being replanted with Tifdwarf, a Bermuda known for creating a faster putting surface.

The most significant individual hole change is on the 15th, a 141-yard par 3. Its "island" green will be narrow and 150 feet long, have three tiers that will drop seven feet from back to front, and be surrounded by a rock wall.

Graham/Panks picked in \$3.8B project

SCOTTSDALE, Ariz. — Graham/Panks International has been selected to design the first of five golf courses at Lake Las Vegas, a \$3.8-billion master-planned community and destination resort project in Henderson, Nev.

Pioneering a new concept, Lake Las Vegas has been described by architect Gary Panks as "one of the most ambitious golf course development projects in the nation today."

Permits were first sought more than 25 years ago, and the approved master plan has been formalized within the past five years.

The development by Transcontinental Properties will feature a 320-acre artificial lake and will include up to eight luxury hotels, four resort golf courses, one private golf course and more than 3,000 single-family homes and villas.

Courses newly approved in the U.S.

Golf Course News is publishing this list monthly. It includes courses that have been approved around the country in the past month. In addition, the accompanying chart contains the sites and contacts for new courses and renovations in the planning stages. When those courses are ready to begin construction they will be

listed again in this "Courses newly approved in the U.S." chart.

We would appreciate your help in updating this section. To contact us call 207-846-0600 or write *Golf Course News*, P.O. Box 997, Yarmouth, Maine 04096.

Under "Type" — D= Daily Fee; P= Private; and M= Municipal.

Location	Course Name	Type	Holes	Address	Architect/Contact
California					
Fairfield	Paradise Valley GC	N/A	N/A	1000 Webster St.	Robert Muir Graves
Colorado					
Durango	N/A	N/A	18	Hwy 550	Finger Dye Spann
Ft. Collins	Link-N-Greens	D	9	Lincoln & Lemay Aves.	Mike Musgrave
Florida					
Cocoa Beach	N/A	M	9	Minuteman Causeway	Gene Burress
Idaho					
Idaho Falls	N/A	M	18	East River Rd.	Golf Course Mgr. Chuck Deming
Kendrick	River Crossing GC	D	9	P.O. Box 134	Gordon E. Nelson
Massachusetts					
Sutton	Sutton Hills GC	P	36	Putnam Hill Rd.	Cornish & Silva
Minnesota					
Rochester	N/A	P	18	Country Club Rd.	Paul Pehler
Oregon					
Prineville	N/A	M	18	N/A	Brian Whitcomb
Texas					
East San Angelo	N/A	D	27	Pulliam St.	Richard Fausset
Virginia					
Fredericksburg	Curtis Memorial Park	D	18	Stafford County	Ault, Clark & Assoc.

Champions Development Group appoints Perna v-p

BOCA RATON, Fla. — Craig A. Perna, former divisional vice president for Rainberry Developers Four, Inc., and project director of The Polo Club Boca Raton, has been appointed chief operating officer of Columbus, Ohio-based Champions Development Group. Champions said it "specializes in creating upscale country club communities with ... outstanding golf courses."

While with Rainberry, Perna was responsible for creating two south Florida communities, including The Polo Club Boca Raton, a 900-acre, 1,700-home country club community.

"The success of this project has been a direct result of Craig's efforts," said Roy Flack, president of Rainberry Developers Four, Inc. "His dedication, professionalism and hard work produced south Florida's premiere country club community."

The second project was Polo Trace, a 400-acre golf club community now under construction. Its first golf course, already open, is being acclaimed as one of the best new courses in the country.

"Craig's dedication, professionalism and talent have been very instrumental in developing some of the finest golf course communities in South Florida," said Tak

Tanigawa, chief operating officer of Champions Development Group. "We will utilize his considerable expertise in designing similar communities across the country."

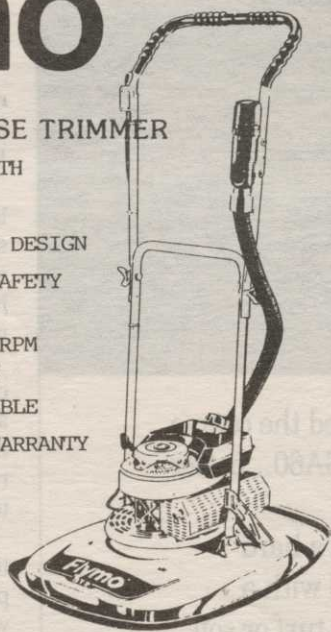
Perna's first projects will be Country Club of the North in Dayton, Ohio, and the Medallion Club in Columbus. The Dayton club will have a Jack Nicklaus course. Jack Nicklaus Jr. will design the Medallion course.

In addition to heading the team of professionals who will create the first two projects, he will formulate a development group that will purchase and create such communities nationwide.

Flymo®

GCT 20 GOLF COURSE TRIMMER

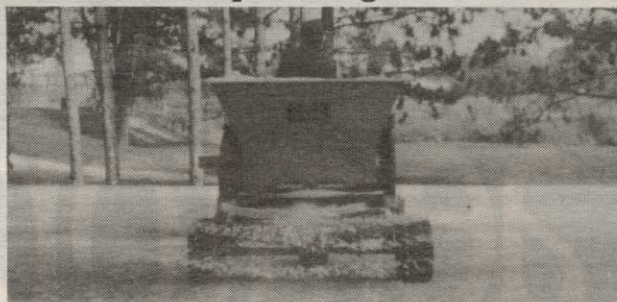
- * 20 INCH CUTTING WIDTH
- * WEIGHT 34 LBS
- * NEW REINFORCED DECK DESIGN
- * PATENTED & PROVEN SAFETY CUTTING SYSTEM
- * 98cc/2 STROKE/4200 RPM POWERFUL JLO ENGINE
- * COMPLETELY REBUILDABLE
- * 1 YEAR COMMERCIAL WARRANTY (ENGINE ONLY)



PRECISION
SMALL ENGINE CO.
POMPANO BEACH, FLORIDA
(305) 974-1960 OR 1-800-345-1960
REPS WANTED

TERRA TOPPER

21' topdressing width



Apply wet or dry sand with ease, no clogging, at the rate of 100 pounds per acre to 2 cubic yards per green. Material can be thrown to the left, right or full pattern. Spinners can be tilted for more direct application. Adjustable spinner speed. Material flow metered by adjustable feed drum speed. SIMPLE!! Requires only 1 remote switch to start and stop material flow. Hopper has 1800-pound capacity.

TERRACARE PRODUCTS CO. INC.
P.O. Box 248
Pardeeville, WI 53954
Phone: 608-429-3402
FAX: 608-429-2889



When
Results
Count...

...USE THE BEST!

Silva-Fiber™


Grows Golf Courses!

Seeds/Sprigs/Stolons/Capping
100% Virgin Wood Fiber
for Hydraulic Planting
- Available Worldwide -

(800) 443-9179

Fax (206) 888-7504

Weyerhaeuser Engineered Fiber, Tacoma, WA 98477

 Weyerhaeuser