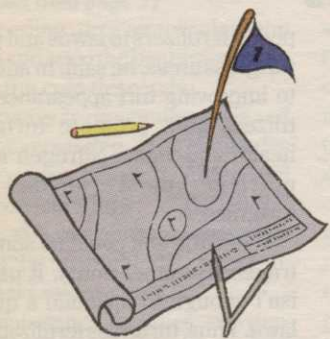


Briefs



INVESTMENT FIRM EYES GOLF

RALEIGH, N.C. — Robert L. Brumbaugh has formed Golf Course Investors, Inc., which will specialize in public and private stock and/or limited partnership offerings to fund golf course projects.

The new company will assist developers, prospective owners, and owners wishing to sell by securing needed capital through security offerings.

Brumbaugh, 43, holds a master's degree in finance and marketing and has several years of experience as a corporate controller, credit manager and investment consultant with major Wall Street firms.

Golf Course Investors is headquartered at 2505 Diamondhitch Trail, Raleigh, N.C. 27615; 919-847-0371.

GIBBONS JOINS DESIGN COMPANY

KANSASCITY, Mo. — Robert M. Gibbons has joined the architectural, engineering and planning firm of Howard Needles Tammen & Bergendoff as a senior golf course architect in the firm's landscape architecture department.



Robert Gibbons

Gibbons recently completed design and construction of Inland Greens in Wilmington, N.C. Prior to Inland Greens, Gibbons was project manager for a 500-acre residential development at Cross Creek Plantation in Seneca, S.C., that included a golf course designed by P.B. Dye.

Gibbons also was project manager for a 2,000-acre residential development in Wilmington, N.C., that included golf courses designed by Dye and Jack Nicklaus, as well as a tennis/sports center.

CLUBHOUSE UNDERWAY AT KIAWAH

Construction of the clubhouse at The Ocean Course at Kiawah Island is underway.

The 12,000-square-foot facility should be completed by early August, better than a month prior to The Ryder Cup Matches being played Sept. 23-29 at the Pete Dye-designed course.

Clubhouse elevation is 20 feet above sea level. The back of the building is made of glass and faces the Atlantic Ocean, according to designer Charlie Arrington of Landmark Land Co. of Carolina, Inc.

The clubhouse will feature a golf shop, dining room and bar, snack bar, locker rooms, offices, cart and bag storage room, and club repair areas. The dining room seats 90 and opens to a patio. Only breakfast and lunch will be served and attire is strictly casual.

Two South Carolina firms are involved in the construction. LS3P, an architectural firm, produced the construction documents. Thomas & Hutton of Mount Pleasant, S.C., are civil engineers.

TPC designs face 'sweeping changes'

By Bob Seligman

PGA Tour officials are switching the emphasis of Tournament Players Club courses to layouts using more of the natural surroundings while being less penal in nature.

Bobby Weed, chief designer for the PGA Tour, said the movement began last year when PGA Tour Commissioner Deane

See related feature on pages 36-37.

Beman said a need existed for more traditional courses. It gained momentum after a survey of more than 150 touring pros showed that they like those types of layouts.

"In the 1990's you'll see some sweeping

reforms in the way we build the golf courses and it will start with design," Weed said. "We want to revert back to some of the traditional design, and that doesn't necessarily mean target golf."

It does mean a move away from the severity of the first TPC at Sawgrass, in Ponte

Continued on page 38



Rees Jones' new creation, The Atlantic Club in the Hamptons on Long Island. A private membership club, it will open next year.

Snead, Graves combine name, talents in new venture

WALNUTCREEK, Calif. — A new career life has begun at 60 for golf course architect Robert Muir Graves.

His 10-employee company has affiliated with Sam Snead Golf Design to create a new firm that will combine the famous golfer's name and philosophy with Graves' technical experience.

Called Classic Golf Designs Inc., the new entity will be a 50-50 partnership between the Graves and Snead organizations.

Their idea is to compete for the top jobs.

"We've been very successful," said Graves, "but we can't quite meet the Arnold Palmers."

The names of Palmer, Jack Nicklaus, Gary Player, Tom Weiskopf and other pros who design courses attract top clients worldwide.

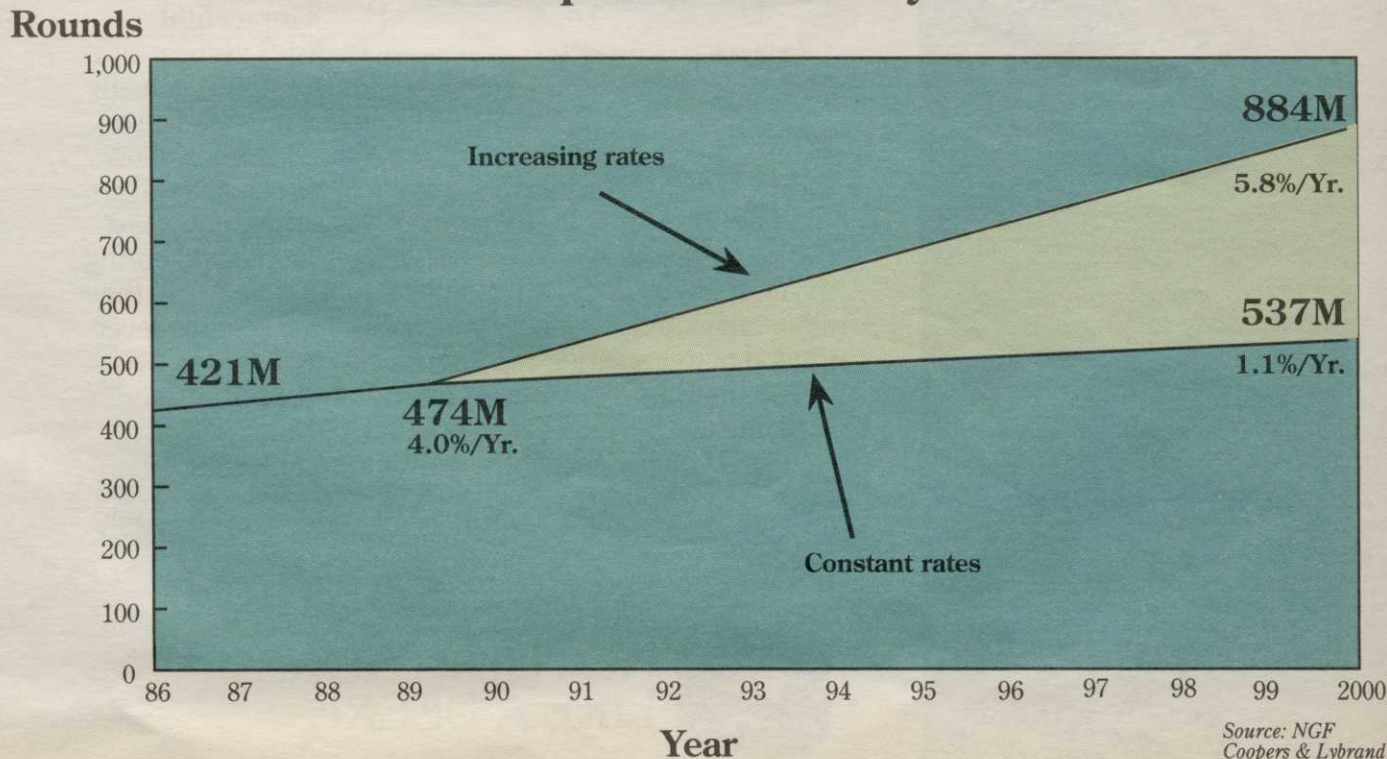
"Occasionally, we get a job away from them or Robert Trent Jones Jr., or Pete Dye, but we are not regularly considered for the high-end resorts and developments," Graves said.

The Snead alliance would enable Graves, who is in the "upper middle" of the \$300,000-\$1 million range for U.S. architects, to charge the \$500,000-plus fees demanded now by some. Palmer's and Nicklaus's normal fees are \$1.25 million.

Snead and Graves hope their combined stature will allow them to move increasingly into Europe, Asia and Latin America, where golf's popularity far outstrips courses.

The Snead organization is known for its European courses. Graves has been active throughout the Pacific Rim.

Golf demand potential to the year 2000



Source: NGF Coopers & Lybrand