

CALENDAR

November

11-15 — Green Industry Expo and Professional Grounds Management Society and American Landscape Contractors' Association Conference at the Hyatt Hotel in Nashville, Tenn. Call 301-667-1833.

12-13 — GCSAA seminar in Painesville, Ohio, on environmental management.\*

12-14 — Golf Summit 90, the third in a series of industry strategic planning meetings, at Marriott's Desert Springs Resort and Spa in Palm Springs, Calif. Coordinated by the National Golf Foundation, the summit will focus on the progress made in the programs of the Strategic Plan for the Growth of Golf, first introduced by the NGF in 1988. Contact the NGF, 1150 South U.S. Highway One, Jupiter, Fla. 33477; 407-744-6006.

13-16 — New York State Turfgrass Association Turf and Grounds Exposition at the Rochester (N.Y.) Riverside Convention Center. Contact NYSTA at 800-873-TURF or 518-783-1229.

14 — GCSAA seminar in Palm Beach Gardens, Fla., on Budgeting and Forecasting.\*

14 — Scotsturf 1990 in Ingleton, Edinburgh, Scotland. Contact Anne Swan at 0908-311856.

15-16 — GCSAA seminar in Louisville, Ky., on Plant Nutrition and Fertilizers.\*

26 — GCSAA seminar in Rapid City, S.D., on Water Quality and Irrigation Scheduling.\*

27 — GCSAA seminar in Albuquerque, N.M., on Developing Your Hazard Communication Program.\*

28 — GCSAA seminar in Albuquerque, N.M., on Safe Pesticide Management.\*

28-30 — Second Golf Course Europe, an international exhibition and conference on the design, construction and maintenance of golf courses and golf club management, at Le Parc des Expositions in du Bourget, Paris, France. Contact Ellen MacGillavry at Expoconsult, Industrieweg 54, P.O. Box 200, 3600 AE Maarssen, Holland; 03465-73777.

29-30 — GCSAA seminar in Pleasanton, Calif., on Golf Course Restoration, Renovation and Construction Projects.\*

December

2-3 — GCSAA seminar in Denver, Colo., on Environmental Considerations in Golf Course Management.\*

3-4 — GCSAA seminar in Cedar Rapids, Iowa, on Managerial Productivity.\*

3-6 — New Jersey Turfgrass Expo '90 at Trump Taj Mahal, Atlantic City. Contact Dr. Henry W. Indyk, Crop Science Department, P.O. Box 231, Cook College, New Brunswick, N.J. 08903; 201-932-9453.

\* — For more information or to register, contact Betsy Evans, education coordinator, Golf Course Superintendents Association of America, at 800-472-7878 or 913-841-2240. The seminars are dependent upon the availability of the instructors, and are therefore subject to change.

Score a HOLE IN ONE

with a Classified Display Ad like this one in GOLF COURSE MARKETPLACE

Call Simone Lewis today at (813) 576-7077 for details...



Nationwide delivery • Install in less than two hours

Golf Course Bridges!

1-800-328-2047

Thousands in use. Built to last.



Route 5, Box 178, Alexandria, MN 56308 • (612) 852-7500

Sponsor Member



NATIONAL GOLF FOUNDATION

For free information circle #158



YARDAGE MARKERS

\$7.50 EACH, POSTPAID IN U.S.A.

High Density Polyethylene with U.V. Inhibitors to Preserve Color and Prevent Deterioration.

Free Sample Upon Request.

Using a Touch Tone Phone Call:

1-800-824-9029 Wait for Tone — 753

GOLF 2000 CORPORATION

9842 HIBERT STREET, SAN DIEGO, CALIFORNIA 92131

For free information circle #160

Clearly Affordable Two-Way Radios By Motorola Radius

- LOW COST: RADIOS START AT \$235.00
- UP TO THREE-YEAR WARRANTY
- IMMEDIATE DELIVERY
- TRADE-INS ACCEPTED
- FREE TWO-WEEK TRIAL
- VARIABLE POWER MODELS AVAILABLE

1-800-527-1670

\*Actual trade-in allowance depends on make and model of unit being traded in

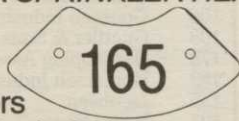


Page-Com, Inc. 10935 Alder Circle, Dallas, Texas 75238 (214) 348-0382

For free information circle #162

ENGRAVED YARDAGE LABELS

FOR SPRINKLER HEADS



CALL FOR FREE SAMPLE KIT

- Bright colors
- Fasteners included
- Orders quickly shipped UPS

1-800-284-YARD

THE YARD EDGE GOLF CO.

P.O. Box 13159

Wichita, KS 67213

For free information circle #163

SUNBELT PATH PAVERS

For maintenance free concrete paths using the "FAST TRACK" METHOD Environmentally Sensitive & Economical

For more details, call

(904) 628-3141

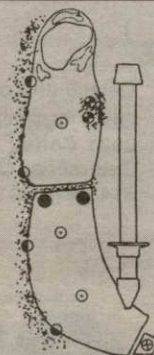
P.O. Box 4228 • Homosassa Springs, FL 32647

Members GCSAA, GCBA, NGF

For free information circle #165

GOLF COURSE MARKERS

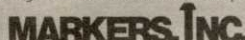
Distinctive • High Quality Low Cost • Low Maintenance Distributor Discounts



Patent No. 4,787,601

- OUT-OF-BOUNDS MARKERS
- YARDAGE MARKERS
- GROUND UNDER REPAIR MARKERS
- ⊕ TEE MARKERS
- HAZARD MARKERS

Call today for information & samples.



33597 Pine Oak Parkway, Avon Lake, Ohio 44012 (216) 933-5927 • FAX (216) 933-7839

For free information circle #166

Daylen INCORPORATED

GOLF COURSE CONSTRUCTION

2559 So. East Ave. Fresno, CA 93706 (209) 233-3345 FAX (209) 233-2086

Lic. No. 437564 Dale L. Siemens President

For free information circle #136