

NEW LITERATURE

Golf community directory helps home buyers

Hilary House Publishers Inc. has released a new, 296-page publication titled "The Directory of Residential Golf Course Communities."

Consumers can use this one source to research 280 of America's leading golf course communities for full-time, vacation or retirement living.

The publication includes information on when the community opened; age range of residents; how many owners use their home as a primary residence or vacation home; total acreage in the community; number of home sites and lot sizes available; whether the community is located inland or by the water; name of the closest airport; financial considerations (equity, initiation fees, dues, minimum food and beverage spending); number of holes; availability of fitness center, monitored security, clubhouse, pool, tennis, marina, equestrian facilities and fishing.

Also included are names of the course designer, golf pro and touring pros plus listings of the tournaments hosted by each community. Most important, each description discusses the sizes and styles of homes, availability of home sites and price ranges.

"The Directory of Residential Golf Course Communities" costs \$19.50 plus \$3 postage and handling. It can be ordered from Hilary House Publishers, Inc., 980 North Federal Highway, Suite 206, Boca Raton, Fla. 33432 or by calling 407-338-2120.

Turner flail mower literature offered

Industrial flail mowers are featured in new product literature published by Turner Equipment, Inc., a division of Elswick, Inc.

Marketed under the trademark "Roadrunner," the mowers are built to stand up to the most rigorous maintenance conditions.

Roadrunner flail mowers are available in three basic models and in a variety of configurations that mow a swath from 74 inches up to 21 feet, depending on the size and number of mid-mount wings and rear-mount units.

The mid-mount wings attach to the tractor with Turner's patented "T" mounting frames, designed to minimize stress on tractor assemblies.

The rear-mount units attach to the tractor's 3-point linkage and may be center mounted or offset.

All mowers feature unitized steel housings, gear-driven hydraulic pumps to combat hot-weather extremes and dynamically balanced reels that can accommodate fine or coarse cut flails.

For a free copy of the new literature write Marketing Department, Turner Equipment, Inc., 4675 Granite Drive, Tucker, Ga. 30084 or call 404-934-5017.

Wittek features range equipment

Wittek Golf Supply's new eight-page color brochure features the latest in driving range equipment, including the Ball Hawk SL90 ball picker and Wittek Blue Grass Tee Mat.

The brochure also contains a variety of new range supplies and pro shop display fixtures for golf clubs and umbrellas.

The free brochure is available by calling Wittek Golf Supply Co. at 1-800-869-1800.

Golf Course Marketplace

To reserve space in this section call Simone Lewis, 813-576-7077

EMPLOYMENT

POSITION AVAILABLE: HEAD GOLF PROFESSIONAL

The Geneva National Golf Club includes three 18-hole championship golf courses designed by Arnold Palmer, Lee Trevino, and Gary Player, and is located four miles west of the City of Lake Geneva, Wisconsin. Geneva National is a 1,600 acre recreational/residential development providing golf, tennis, swimming, horseback riding and hunting to its members. The Geneva National Golf Club is seeking resumes from qualified applicants for the position of Head Golf Professional. Applicants must possess a minimum of five years employment experience as a Class A professional in a like position. Resumes must include the names of three references. Salary and benefits commensurate with experience and training. Please submit resume to:

William J. Bissett
Geneva National
PO Box 1090
Lake Geneva, WI 53147

SUPERVISOR - PIERCE STADIUM EAST PROVIDENCE, RI

\$22,268 - \$26,585. Oversees staff in maintenance of playing fields, basketball, and tennis courts, park area, and Pierce Stadium. High School and nine years exp. maintaining, supervising, and managing large recreational facility, and associated playing fields and park areas. Knowledge of turf maintenance essential. Send resume by 11/30/90 to:

Personnel
City Hall
145 Taunton Ave.
East Providence, RI 02914
(401) 434-3311

EEO/AA EMPLOYER

FOR SALE

FOR SALE

Neary bedknife & reel grinders. Used, good condition. \$1700. Also a 1984 Jacobsen tee mower. \$2500. Delivery available.

(309) 647-7249

POND LINERS

Buy direct from fabricator 20 & 30 mil. P.V.C. Made to order. Under 20 cents per sq. ft. Installation or supervision available. Call...

COLORADO LINING COMPANY
(303) 841-2022

RECONDITIONED PUMP STATIONS FOR SALE

Station #1: 1250 GPM @ 120 P.S.I., 1800 RPM, 3 pumps.

Station #2: 1000 GPM @ 120 P.S.I., 1800 RPM, 2 pumps.

Can be modified to meet your requirements. Call (214) 393-0346 for information. Ask for Susan Hull.

SUPERINTENDENTS WANTED!!

To try these new labor-saving devices:

• The "New Flymo": The original Flymo is back with a brand new look.

• "LEVEL-EEZ": A unique kit that allows you to raise Toro & Rain Bird sprinkler heads in minutes with **No Digging Required.**

• "DonuTTrimmer Edging Blades": Allows you to edge bunkers, sprinkler heads, yardage markers & cart paths in minutes.

• "Aqua-Quick": Turns Toro & Rain Bird valve-in-head sprinklers into 1" water source instantly. To order, call:

Precision Small Engine Co.
Andy Masciarella, Distributor
1-800-345-1960
Thomas R. Wait
New Product Developer

EQUIPMENT FOR SALE

FH-15 Fairway Mower. Hydraulic-driven reels, 11-bladed. All units & reels 100% rebuilt & ground. Tractor has brand new engine. Mower doesn't suit our needs. Asking \$12,000. **MUST SELL!**

Call (919) 626-0450

EQUIPMENT WASH PAD

MEETS EPA REQUIREMENTS FOR ABATEMENT OF POINT SOURCE & NON-POINT SOURCE POLLUTION. Trap specially engineered to filter oil, grease, sand, grass clippings. Has neutralization basin for chemical pre-treatment where ordinances specify.

INEXPENSIVE EQUIPMENT FOR ENVIRONMENTALLY RESPONSIBLE MANAGEMENT. Installed or plans & equipment sold separately.

Call 1-800-638-2980
or 817-924-0804

GOLF COURSE ACCESSORIES

SAVE ON PERSONALIZED FLAGS

Buy factory direct & save 40% or more on personalized flags. Flagpoles, tee markers, etc. also available. Fast personalized service guaranteed. Call toll free.



FOUR SEASONS
GOLF COMPANY

P.O. Box 78011
Greensboro, NC 27427
1-800-476-7005

GOLF COURSE SHAPING

GOLF TRACTOR, INC.

Golf Course Shaping Expertise
Richard LaConte, Jr.,
Owner/Operator. D-5 Cat.
Stuart, Florida
(407) 283-9437

BUSINESS OPPORTUNITIES

MERGER

Hard-working owner of well-equipped Irrigation Company is seeking merger with a company in the Mid to South Atlantic states for golf course & athletic field installations. Serious letters of interest should be faxed to:

(908) 526-8378

REAL ESTATE

TEXAS GOLF COURSES

9 & 18 holes — Statewide.
Some with extra land, dev. lots.
Descriptive list available.

TEXAS GOLF PROPERTIES
1603 Lightsey — Austin, TX 78704
512/442-7105 • Fax 512/442-1812

WANTED

Golf course operator seeks golf operations for lease, purchase or joint venture.

Fax: (201) 842-4608

EDUCATIONAL OPPORTUNITIES

GOLF COURSE MAINTENANCE SHORT COURSE

The Ohio State University's Golf Course Maintenance Short Course will be held January 7-11, 1991. To receive info., write or call: Sue White, Ohio State Univ., Dept. of Agronomy, 2021 Coffey Road, Columbus, OH 43210, (614) 292-7457.

ATTENTION ADVERTISERS!
Closing Date for the December Issue
of GOLF COURSE NEWS is
Friday, November 19th.

Flood

Continued from page 1

overflowed. General Manager Jim Armstrong said the 135-by-40-foot pond that hugs the left side of the 11th green was "gone," along with its retaining walls.

While using a temporary green, Armstrong hired outside contractors and expected to have a new 11th green, retaining wall and creek banks constructed by late November or early December — "weather permitting."

Armstrong discounted rumors that the job would be done in 2-1/2 weeks, saying that while that would be possible, the other work had to be completed before greens reconstruction could begin.

Architect Ed Connor of Golforms in Ponce Inlet, Fla., who in 1987 created a computer model of the elevations and contours of all Augusta National's greens, said the club has the best topographical details of any course he had ever seen. Therefore, it would be easy to rebuild it to its original state as designed by Alister Mackenzie and Bobby Jones in 1933.

Neighboring Augusta Country Club was "fortunate," said superintendent Mike Crouch. "At least we've got grass."

With 12 inches of rain falling in 24 hours, Rae's Creek also overflowed onto Augusta CC's 8th green and left one-quarter inch or more of silt, washed out the riprap and damaged a bridge.

Crouch's crew aerified the damaged turf, then washed off the silt with high-pressure hose. He estimated the cost of the damage at less than \$10,000.

In South Carolina superintendents reported from 8-1/2 inches at Florence (S.C.) Country Club to 15-2/10 at Snee Farm Country Club in Mt. Pleasant.

Nelson Cato, superintendent at Woodside Plantation Club in Akin, said his course got 13 inches of rain in two days, nine inches of it falling in nine to 10 hours on Oct. 12. Nevertheless, he said some concrete cart paths and a pump house, where rain blew out a main disconnect, suffered the major damage.

The town of Mt. Pleasant helped Snee Farm by sending two tractor pumps to the spillway and pumping out 1,800 gallons per minute for two days, according to superintendent Billy Ford.

Superintendent Dennis Bowsher reported his Sunset Country Club in Sumter absorbed 12-13 inches of rain in two days. Though the driving range and tennis courts flooded, his sand-based course drained so well only a couple of sand traps were washed out.

Several superintendents reported they had just overseeded before the rains fell.

Superintendent Chuck Green at Florence lost some of his overseeding work, as did John Gay at Forest Lake Club in Columbia.

Bucky Hill, superintendent at Palmetta Golf Club in Akin, had closed his course for two weeks to overseed. The storms caused him to close it another four days, but he was thankful that his \$14,000 in seeds had mostly germinated.

"We had a pretty good river coming across 4, 5 and 6 fairways," Hill said. The 10-1/4 inches of rain completely destroyed the old dirt cart paths on the course, which was built in 1892 and remodeled by Mackenzie in 1940-41.

Hill had a contractor haul in clay and rock to build up the paths well enough to get play going again. But his crews were still scraping sand off the fairways in late October.

At Kiawah Island, Pete Dye's new course reportedly survived its first major test of water drainage in fine shape.

Assistant superintendent Milt Langley said Wild Dunes Golf Course on the Isle of Palms did not lose its 18th green, as had been rumored. But construction crews working on the new Dunes West course were slowed by mud since the cart paths and roads were not finished.

Golf Course Marketplace

To reserve space in this section call Simone Lewis, 813-576-7077

willadsen scale models

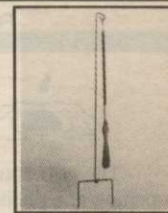
Custom Models for the Golf Industry

555 whitehall street s.w.
atlanta, ga. 30303 (404) 658-1704

For free information circle #150

THE PATH TO THE CUP is strewn with fallen debris. The blowers have all disappeared to the shop, but your golfers are still out.

With the GROOM BROOM in place, this path can easily be cleared and the game continues.



Ask Your Golf Course Distributor for INNOVATIVE MAINTENANCE PRODUCTS

From Master of the Links

P.O. Box 52 • Lombard, IL 60148-0052
(708) 627-8379 (MASTERY)



For free information circle #151



PIPE LOCATOR THE LOCAT™ INEXPENSIVE

Locates, traces underground pipes, including drain pipes, made of PVC, ABS, steel and cement. Finds sprinklers, valves and clogs.

Used by Hundreds of Golf Courses

Satisfaction Guaranteed

Bloch & Company
Box 18058, Cleveland, OH 44118
(216) 371-0979

For free information circle #152



EXCEL

BRIDGE MANUFACTURING CO.

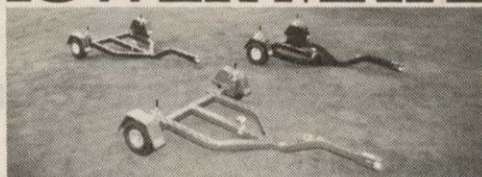
Golf Course Bridges are our specialty! We fabricate easy-to-install, pre-engineered spans and deliver them anywhere in the U.S.A. Call today for a free consultation.

800/548-0054

12001 SHOEMAKER AVENUE, SANTA FE SPRINGS, CALIFORNIA
213/944-0701 FAX 213/944-4025

For free information circle #153

MOWER MATE®



U.S. & Foreign Patents Pending. Canadian Pat. #66639
Protect your greensmower from damage due to transport from green to green. Our exclusive 3-point clamping system suspends your reel, bed-knife, verticutter & differential. Call or write for details.



BELL TURF EQUIPMENT

316 Blossom Hill Rd.
San Jose, CA 95123
(408) 972-5061

For free information circle #154

GOLF COURSE RADIOS

Motorola

2 WAY RADIO PORTABLE FM

POCKET SIZE GOLF COURSE ORGANIZATION

\$235.00

Radios Mail Order Pricing...

for details call Jim Martin

(800)

523-0625

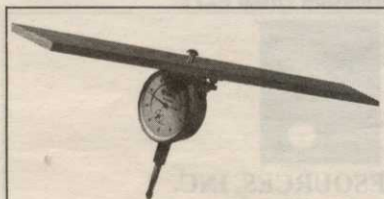
2 YR. WARRANTY

FREE DEMO

WAREHOUSE RADIO
602 Third, Columbus, IN 47201

POCKET SIZE 12 OZ.

For free information circle #155



ACCU-GAGE

Accu-gage is a precision measuring instrument for making highly accurate height-of-cut adjustments on greensmowers or other precision mowers.

—FEATURES—

- Adjustments can be made with the gage on the mower. Simply read the gage while turning the adjusting knob.
- Measurements are made at the front edge of the bedknife regardless of bedknife wear.
- Eliminates the inaccurate "feel" method of old-type adjusting bars.
- Available in 15", 18" and 24" bars.

For more information on this and other precision tools call Toll Free: 1-800-253-2112 / In Michigan call Collect: 313-429-9571

PRECISION TOOL PRODUCTS CO. 7836 Bethel Church Rd. • Saline, MI 48176

For free information circle #156



QUAIL VALLEY FARM INC.

"GROWERS OF QUALITY TURF GRASSES"



MEYER Z-52 ZOYSIA TIFGREEN II
TIFDWARF TIFWAY

7501 KANIS ROAD
LITTLE ROCK, ARKANSAS 72204

501 224 TURF
501 224 8873



For free information circle #157

CALENDAR

November

11-15 — Green Industry Expo and Professional Grounds Management Society and American Landscape Contractors' Association Conference at the Hyatt Hotel in Nashville, Tenn. Call 301-667-1833.

12-13 — GCSAA seminar in Painesville, Ohio, on environmental management.*

12-14 — Golf Summit 90, the third in a series of industry strategic planning meetings, at Marriott's Desert Springs Resort and Spa in Palm Springs, Calif. Coordinated by the National Golf Foundation, the summit will focus on the progress made in the programs of the Strategic Plan for the Growth of Golf, first introduced by the NGF in 1988. Contact the NGF, 1150 South U.S. Highway One, Jupiter, Fla. 33477; 407-744-6006.

13-16 — New York State Turfgrass Association Turf and Grounds Exposition at the Rochester (N.Y.) Riverside Convention Center. Contact NYSTA at 800-873-TURF or 518-783-1229.

14 — GCSAA seminar in Palm Beach Gardens, Fla., on Budgeting and Forecasting.*

14 — Scotsturf 1990 in Ingleton, Edinburgh, Scotland. Contact Anne Swan at 0908-311856.

15-16 — GCSAA seminar in Louisville, Ky., on Plant Nutrition and Fertilizers.*

26 — GCSAA seminar in Rapid City, S.D., on Water Quality and Irrigation Scheduling.*

27 — GCSAA seminar in Albuquerque, N.M., on Developing Your Hazard Communication Program.*

28 — GCSAA seminar in Albuquerque, N.M., on Safe Pesticide Management.*

28-30 — Second Golf Course Europe, an international exhibition and conference on the design, construction and maintenance of golf courses and golf club management, at Le Parc des Expositions in du Bourget, Paris, France. Contact Ellen MacGillavry at Expoconsult, Industrieweg 54, P.O. Box 200, 3600 AE Maarssen, Holland; 03465-73777.

29-30 — GCSAA seminar in Pleasanton, Calif., on Golf Course Restoration, Renovation and Construction Projects.*

December

2-3 — GCSAA seminar in Denver, Colo., on Environmental Considerations in Golf Course Management.*

3-4 — GCSAA seminar in Cedar Rapids, Iowa, on Managerial Productivity.*

3-6 — New Jersey Turfgrass Expo '90 at Trump Taj Mahal, Atlantic City. Contact Dr. Henry W. Indyk, Crop Science Department, P.O. Box 231, Cook College, New Brunswick, N.J. 08903; 201-932-9453.

* — For more information or to register, contact Betsy Evans, education coordinator, Golf Course Superintendents Association of America, at 800-472-7878 or 913-841-2240. The seminars are dependent upon the availability of the instructors, and are therefore subject to change.

Score a HOLE IN ONE

with a Classified Display Ad like this one in GOLF COURSE MARKETPLACE

Call Simone Lewis today at (813) 576-7077 for details...



Nationwide delivery • Install in less than two hours

Golf Course Bridges!

1-800-328-2047



Route 5, Box 178, Alexandria, MN 56308 • (612) 852-7500

Thousands in use. Built to last.

Sponsor Member



For free information circle #158



YARDAGE MARKERS

\$7.50 EACH, POSTPAID IN U.S.A.

High Density Polyethylene with U.V. Inhibitors to Preserve Color and Prevent Deterioration.

Free Sample Upon Request.

Using a Touch Tone Phone Call:

1-800-824-9029 Wait for Tone — 753

GOLF 2000 CORPORATION

9842 HIBERT STREET, SAN DIEGO, CALIFORNIA 92131

For free information circle #160

Clearly Affordable Two-Way Radios By Motorola Radius

- LOW COST: RADIOS START AT \$235.00
- UP TO THREE-YEAR WARRANTY
- IMMEDIATE DELIVERY
- TRADE-INS ACCEPTED
- FREE TWO-WEEK TRIAL
- VARIABLE POWER MODELS AVAILABLE

1-800-527-1670

*Actual trade-in allowance depends on make and model of unit being traded in

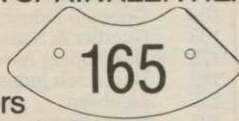


Page-Com, Inc. 10935 Alder Circle, Dallas, Texas 75238 (214) 348-0382

For free information circle #162

ENGRAVED YARDAGE LABELS

FOR SPRINKLER HEADS



CALL FOR FREE SAMPLE KIT

- Bright colors
- Fasteners included
- Orders quickly shipped UPS

1-800-284-YARD

THE YARD EDGE GOLF CO.

P.O. Box 13159

Wichita, KS 67213

For free information circle #163

SUNBELT PATH PAVERS

For maintenance free concrete paths using the "FAST TRACK" METHOD Environmentally Sensitive & Economical

For more details, call

(904) 628-3141

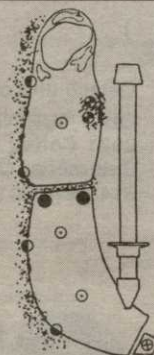
P.O. Box 4228 • Homosassa Springs, FL 32647

Members GCSAA, GCBA, NGF

For free information circle #165

GOLF COURSE MARKERS

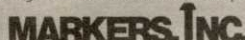
Distinctive • High Quality Low Cost • Low Maintenance Distributor Discounts



Patent No. 4,787,601

- OUT-OF-BOUNDS MARKERS
- YARDAGE MARKERS
- GROUND UNDER REPAIR MARKERS
- ⊕ TEE MARKERS
- HAZARD MARKERS

Call today for information & samples.



33597 Pine Oak Parkway, Avon Lake, Ohio 44012 (216) 933-5927 • FAX (216) 933-7839

For free information circle #166

Daylen INCORPORATED

GOLF COURSE CONSTRUCTION

2559 So. East Ave. Fresno, CA 93706 (209) 233-3345 FAX (209) 233-2086

Lic. No. 437564 Dale L. Siemens President

For free information circle #136