

Golf Course Marketplace

To reserve space in this section, call Simone Lewis, 813-576-7077

EMPLOYMENT

SHAPERS WANTED

For project in Japan. Probable time frame is early 1991 for 6-month period. Must demonstrate experience on premier golf courses designed by top golf course architects. Send resumes to:

International Golf Developments
P.O. Box 8415
Westerville, OH 43081-9998

NOW SEEKING APPLICANTS

For Foreman/Superintendent type positions within the irrigation division of Landscapes Unlimited, Inc., a golf course development company. Inquire with **Roy Wilson** at (402) 423-6653 to set up an interview, or, send a resume with references to:

Landscapes Unlimited, Inc.
5831 South 58th St., #C
Lincoln, NE 68516

POSITION WANTED

Golf course constr. mgr./post production superintendent w/BS degree in Agronomy from Texas A&M Univ., 12 yrs. turfgrass specialist exp. & 6 yrs. as golf course super., seeks golf course constr. &/or post production super. pos. For resume, write or call **Earl F. Arto, Rt. 5, Box 532, Houston, TX 77044. (713) 456-0773.**

GOLF COURSE CONSTRUCTION MANAGER/SUPERINTENDENT

Excellent educational work background & experience. Superb knowledge of all phases of golf course construction management & maintenance, incl. irrigation. Experience includes that of golf course supt. & contractor. Willing to travel worldwide. Please contact: **Mark Sosnowitz, 21-H Weavers Hill, Greenwich, CT 06831. (203) 531-5110.**

EDUCATIONAL OPPORTUNITIES

GRAYSON COLLEGE, Dennison, TX. 2-year technical program in golf course & turf grass management. 18-hole golf course on campus. Dormitories, placement assistance, financial aid & scholarships avail. Contact: **GCC, 6101 Grayson Dr., Dennison, TX, 75020. (214) 465-6030, ext. 253.**

REAL ESTATE

INVESTOR NEEDED

To buy California golf course. \$50K buys 2.5% ownership. Co-op with another investor OK. No negative cash flow. Profit! Profit! Profit! **Call Terry Carroll.**

(805) 969-3029 Days
(805) 969-4251 Evenings

9-HOLE PUBLIC GOLF COURSE FOR SALE

ETHEL, LA (25 miles north of Baton Rouge). Established 1956. Approx. 62 acres. For information, call **Vicki** at 504-927-9554; after 6pm 504-928-9410.

GOLF COURSE ACCESSORIES

SAVE ON PERSONALIZED FLAGS

Buy factory direct & save 40% or more on personalized flags. Flagpoles, tee markers, etc. also available. Fast personalized service guaranteed. Call toll free.

1-800-476-7005
Four Seasons Golf Co.
P.O. Box 78011
Greensboro, NC 27427

WHY...

... be hassled with several vendors? With over 30 sales reps nationwide, **BETTER GOLF, INC.** provides a complete service.

Scorecards
Yardage Books
Course Measurement
Sprinkler Tags/Tagging
Wood/Granite Signs
Fairway Markers & Stakes
Tee Markers
OB/Hazard Stakes
Chain Posts & Fences
Photography/Post Cards

Our references are impeccable and include the major tournament playing fields to world-recognized resorts & course developments. Call for free samples. Rep inquiries invited; prime territories available.

BETTER GOLF, INC.
(708) 893-8672

FOR SALE

BENTGRASS SOD

Putting green quality, grown on a fumigated sand base. Height of cut from 5/13" to 1/2".

STORMY ACRES
West Haven, VT
(802) 265-3046

EQUIPMENT FOR SALE

FH-15 Fairway Mower. Hydraulic-driven reels, 11-bladed. All units & reels 100% rebuilt & ground. Tractor has brand new engine. Mower doesn't suit our needs. Asking \$15,000 (neg.)

Call (919) 626-0450

STOLON PLANTING SERVICE

We plant golf courses mechanically. From Sod to planted Stolons in seconds.

FAST • ECONOMICAL • PROVEN

Call or write for brochure & specifications.

FLANNIGAN Stolon Planting Service
1467 Buena Vista Drive
Vista, CA 92083
(619)630-8910 • Fax (619)945-6783

POND LINERS

Buy direct from fabricator 20 & 30 mil. P.V.C. Made to order. Under 20 cents per sq. ft. Installation or supervision available. Call...

COLORADO LINING COMPANY
(303) 841-2022

PIPE LOCATOR

Inexpensive! Locates, traces underground drain, water pipelines of clay, PVC, ABS, steel, cement. Finds sprinklers, valves, clogs. **Bloch & Co., Box 18058, Cleveland, OH 44118. (216) 371-0979.**

SUPERINTENDENTS WANTED!!

To try these new labor-saving devices:

- **The "New Flymo"**: The original Flymo is back with a brand new look.
- **"LEVEL-EEZ"**: A unique kit that allows you to raise Toro & Rain Bird sprinkler heads in minutes with **No Digging Required.**
- **"DonuTTrimmer Edging Blades"**: Allows you to edge bunkers, sprinkler heads, yardage markers & cart paths in minutes.
- **"Aqua-Quick"**: Turns Toro & Rain Bird valve-in-head sprinklers into 1" water source instantly.

To order, call:

Precision Small Engine Co.
Andy Masciarella, Distributor
1-800-345-1960

Thomas R. Wait
New Product Developer

BUILDING NEW GREENS?

Use the best material available for construction — CMplus. **HIM, Inc.** — serving over 235 Northeast golf courses. Call for samples of TD 1000 topdressing blend, CMplus construction blend, or brochure.

Harford Industrial Minerals, Inc.
(301) 679-9191

INDUSTRY INFORMATION

THOMAS R. WAIT

Inventor/developer of the:

- DonuTTrimmer Edging Blade
 - Aqua-Quick Coupler
 - LEVEL-EEZ Sprinkler Head Raising Kit
 - Greens Encroachment Barrier
- Announces that as of April 1, 1990 he is no longer associated with Greenstate International of Ft. Laud., FL. To contact Tom or or for product information, call:

1-800-345-1960

GOLF COURSE SERVICES

GOLF COURSE SERVICES

- Greens fumigation.
- Economical fairway fumigation with Sectagon II
- Custom deep tyne aeration verti-cutting & sweeping.
- Lab soil analysis.
- Renovation — reconstruction.
- Nationwide service.

Hendrix and Dail — Sunbelt Services
Contact **Roger Hruby** at
1-800-726-5215

BUSINESS OPPORTUNITIES

Need to Advertise Your... EMPLOYMENT OPPORTUNITY, BUSINESS OPPORTUNITY, PRODUCTS & SERVICES?

GOLF COURSE NEWS, the newspaper of the golf course industry, offers you a very affordable advertising option... **Classified Line Ads** in the Marketplace section. At \$35 or less per column inch, these line ads are the least expensive way to reach 20,000 of your top prospects in the golf course business. **Categories are not limited to those you see here...** we'll start a new category to suit your needs.

A classified ad in **GOLF COURSE NEWS** ensures that your advertising dollars are being spent wisely. Call Simone Lewis at **(813) 576-7077** Today to place your ad.

ATTENTION ADVERTISERS!

GCN's July issue, featuring an Equipment Update on

Golf Course Accessories closes on **Friday, June 15th.**

Call **(813) 576-7077** to place your ad TODAY!!!

Golf Course Marketplace

To reserve space in this section, call Simone Lewis, 813-576-7077

CALENDAR

June

6-7 — Landscape Industries '90 at the National Agricultural Centre in Stoneleigh, England. Contact Susan Bourne, International Relations Manager, Royal Agricultural Society of England, tel. 44-203-696969.

9-15 — FIS/ASSINSEL World Congress in Seville, Spain.

12-13 — Crittenden Dealmaker's Conference, to meet cash partners for joint ventures, in Orlando, Fla. Contact Crittenden News Service, Inc., P.O. Box 1150, Novato, Calif. 94948; 415-382-2486.

18-19 — National Club Association's New Club Director Conference — for officers, directors, owners and managers of private clubs — at Pinehurst (N.C.) Hotel and Country Club. The program will encompass knowing the legal environment and the clubs' environmental status, the management team, finances and risk management, and insurance. Contact the NCA at Washington Harbour, 3050 K St., NW, Suite 330, Washington, D.C. 20007; 202-625-2080.

24-27 — American Society of Agricultural Engineers meet in Columbus, Ohio. Call 616-429-0300.

25-29 — American Seed Trade Association annual convention at the Grand Cypress Hotel in Orlando, Fla. Contact the ASTA at Suite 964, Executive Building, 1030 15th St., N.W., Washington, D.C. 20005; 202-223-4080.

July

3-5 — Canadian Seed Trade Association annual convention at the Prince Edward Hotel in Charlottetown, Prince Edward Island.

8-12 — Pacific Seedsmen's Association meeting at Harvey's Casino in Lake Tahoe, Nev.

11-12 — Alabama Seedsmen's Association annual convention at the Hilton Hotel in Orange Beach, Ala. Contact Bob Burdett at 205-821-7440.

18-20 — Northern Seedsmen's Association summer meeting in Winnipeg, Manitoba.

22-24 — North Carolina Seedsmen's Association annual convention at the Sheraton Resort and Convention Center in Atlantic Beach, N.C. Contact Hortense Dilday at 919-782-3673.

25-27 — American Sod Producers Association's Summer Convention and Field Days in Ottawa, Ontario, Canada. Firms will be invited to demonstrate their equipment or exhibit their static displays during two days at the Manderley Farm in Kemptonville. Contact ASPA, 1855 Hicks Road, Rolling Meadows, Ill. 60008; 708-705-9898.

August

1 — University of Georgia Turfgrass Field Day at Griffin, Ga. Contact Dr. Gil Landry or Dr. Tim Murphy at 404-228-7300.6

16-17 — South Dakota Seed Trade Association annual meeting at the South Dakota State Game Lodge in Custer (S.D.) State Park.

25-Sept. 10 — Asia Horticultural Tour of Thailand, Hong Kong and Japan. Contact the Professional Plant Growers Association at 517-694-7700.

September

4-6 — The Institute of Groundsmanship's Sports & Leisure World Trade Exhibition at the East of England Showground in Peterborough, Cambridgeshire, United Kingdom. For more information contact Milton Keynes at The Institute of Groundsmanship, 19-23 Church St., The Agora, Wolverton, Buckinghamshire MK12 5LG; telephone 0908-312511.

18-19 — Virginia Tech Turfgrass Research Field Days at the Virginia Tech Turfgrass Research Center in Blacksburg, Va. Contact John R. Hall III, professor and Extension agronomist, at Department of Crop and Soil Environmental Sciences, 424 Smyth Hall, Blacksburg, Va. 24061-0403; 703-231-9736.

GOLF COURSE RADIOS



Motorola

2 WAY RADIO
PORTABLE FM
POCKET SIZE
GOLF COURSE
ORGANIZATION
\$235.00

Radios Mail Order Pricing...

for details
call
Jim Martin

(800)

523-0625

2 YR. WARRANTY

FREE DEMO

WAREHOUSE RADIO
602 Third, Columbus, IN 47201

POCKET SIZE 12 OZ.

For free information circle #143

THE BALLMARK REPAIRER

This unique repair tool was developed over 40 years ago by Pete Stewart, Superintendent at Butterfield Country Club, Hinsdale, IL. It was widely distributed by George A. Davis Company and is still in demand by many Golf Course Superintendents. It is now available through MASTER of the LINKS.



Ask Your Golf Course Distributor for
INNOVATIVE MAINTENANCE PRODUCTS

From

Master of the Links

P.O. Box 52 • Lombard, IL 60148-0052
(708) 627-8379 (MASTERY)



For free information circle #144

"NOVATEE"

The NOVATEE is a combination of specially manufactured synthetic grass of commercial quality. Its patented design, featuring top dressing imbedded between the fibers, allows golfers to tee up just like on natural grass.



The NOVATEE is the state-of-the-art synthetic tee surface for all courses & driving ranges.

Dealer inquiries requested.

PO/CP 533 CSL
Montreal, PQ., Can. H4V 2Z1
514/486-1696
Fax 514/486-9927

SynTenniCo Inc.

For free information circle #146



Nationwide delivery • Install in less than two hours

Golf Course Bridges!

1-800-328-2047

Thousands in use.
Built to last.

Sponsor Member



CONTINENTAL BRIDGE

Route 5, Box 178, Alexandria, MN 56308 • (612) 852-7500

For free information circle #145

willadsen scale models

Custom Models
for the
Golf Industry

555 whitehall street s.w.
atlanta, ga. 30303 (404) 658-1704

For free information circle #147

WITHOUT GRASS



WITH GRASS

GRASS PAVERS

\$2.20/SQ. FT. DELIVERED IN U.S.A.

- Protect Grass from Vehicle Traffic.
- Used for Cart Paths, Service Roads, Parking Lots and Repair of Worn Areas
- Made of High Density Polyethylene

Free Sample Upon Request.

Using a Touch Tone Phone Call:

1-800-824-9029 Wait for Tone — 753

GOLF 2000 CORPORATION

9842 HIBERT STREET, SAN DIEGO, CALIFORNIA 92131

For free information circle #148

ENGRAVED YARDAGE LABELS

FOR SPRINKLER HEADS



CALL FOR FREE SAMPLE KIT

- Bright colors
- Fasteners included
- Orders quickly shipped UPS

1-800-284-YARD

THE YARD EDGE GOLF CO.

P.O. Box 13159

Wichita, KS 67213

For free information circle #149

Clearly Affordable Two-Way Radios By Motorola Radius

- LOW COST: RADIOS START AT \$235.00
- UP TO THREE-YEAR WARRANTY
- IMMEDIATE DELIVERY
- TRADE-INS ACCEPTED
- FREE TWO-WEEK TRIAL
- VARIABLE POWER MODELS AVAILABLE

1-800-527-1670

*Actual trade-in allowance depends on make and model of unit being traded in.

PAGE-COM

Page-Com, Inc. 10935 Alder Circle, Dallas, Texas 75238 (214) 348-0382

For free information circle #150

Practice makes perfect at home on the range

ON THE GREEN

NORMAN E. JOHNSON

A problem facing many golfers is finding a good place to practice. This is particularly true in rural areas where driving ranges are rare. Small-town golf courses are often nine-hole layouts with little provision for a practice area.

But there is a solution to this problem for many and you may be surprised to learn that having or sharing your own practice area can become a practical reality.

As a golfer who has always liked to practice, I solved the practice problem after we moved to our rural home. I discovered there was plenty of farmland in the area marginally suited to crop production. All I had to do was approach a neighboring farmer and things began to take shape.

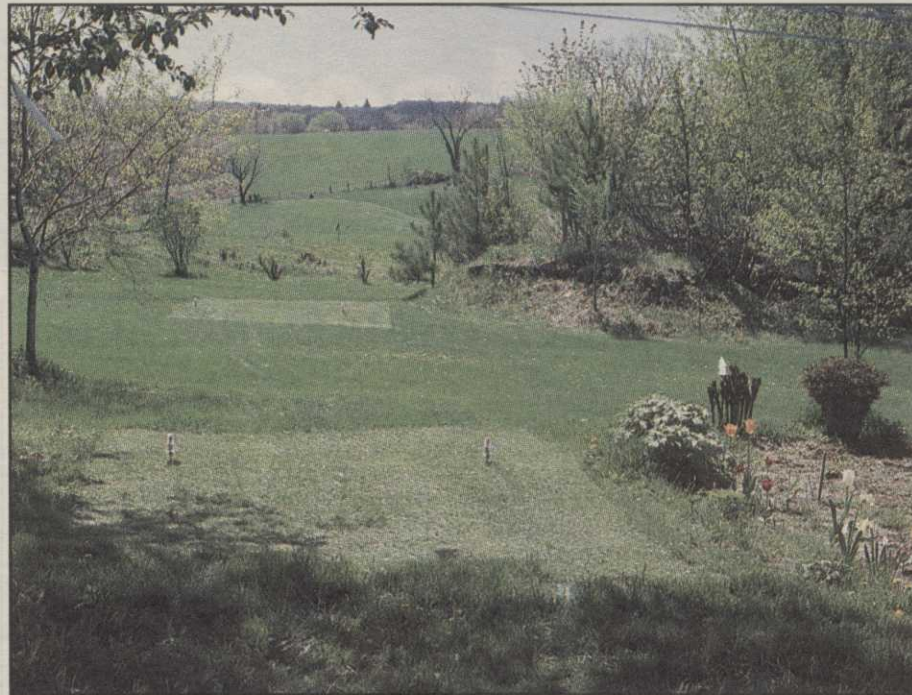
Part of a three-acre pasture caught my eye and I worked out a lease with the farmer to use the land for a practice range. I was doubly fortunate to find this land adjacent to our property and lost no time in grooming it to my needs.

Later, as a golf instructor, I found the practice area ideal for golf lessons as well as a place for others to practice. A serious golfer may want to locate and maintain his own practice area for a number of reasons.

For many it is a case of not having another place to practice. Others may be forced to travel farther than they like. But for the real student of the game, regular driving ranges often fail to offer a really quality practice area that benefits their games.

They may want better groomed turf areas, slopes and sand bunkers. You can also use your own golf balls — not the worn-out balls found at some driving ranges.

A great deal of personal satisfaction can be derived from your own practice area, too.



Norman Johnson has even added a landscaping touch with a flower bed at one of his practice tees. It's 'pick your tee or sandtrap' at this private range.

Equipment and range maintenance

With minimal preparation and care, nature will provide adequate soil nutrition and water to sustain good grass growth in most agricultural areas. This is particularly true of old pastures or fields that may have been abandoned for one reason or another.

Often fields with too severe a slope are turned back to nature or may have too steep a grade to crop farm regularly. These can be ideal for the golfer's needs. In any case, grass can be grown and these areas can be shaped as practice areas with a little work.

You may wish to share this venture with

other golfers, thus minimizing the cost and maintenance.

In most cases a common riding lawn mower will be adequate to mow the grass once the growing surface is properly cleared. Usually, little grass seeding is required as nature seems to provide grass or suitable vegetation as turf. Regular mowing keeps weeds in check as grass spreads naturally over the land.

Some soil may require fertilizer or forms of weed control that can be accomplished with common lawn maintenance equipment.

In my case, I looked around and found a

used, three-gang, steel wheel, golf course mower to mow my three-acre practice area. The price was right and I now own them. I pull these with a small tractor.

I find that mowing the grass once a week, clipped to about one inch high, is ideal.

The property never looked as beautiful as it does now. I even made up a nice sand bunker from which to practice. The \$70 annual rental satisfies the farmer, and I couldn't be happier in finding such a place as a driving range and practice area.

You may not need further encouragement to get started.

Norman Johnson is a freelance writer and golf instructor in Plum City, Wis.

Advertisers Index

RS#	Advertiser	Page
133	Accuform Golf	27
116	American Golf	23
152	Anderson Instruments	38
124	B.H.Sales	29
109	Ciba-Geigy	14
103	Ciba-Geigy	4-5
119	Ciba-Geigy	23
121	Ciba-Geigy	25
112	Cleary Chemicals	16
145	Continental Bridge	37
128	Cushman	34
102	Cushman	3
154	Environmental Constr.	38
148	Golf 2000 Pavers	37
107	Golf 2000 Pavers	13
142	Golf Course News	33
130	Grace-Sierra	39
126	Greensmix	32
105	Growth Products	8
127	Guettler & Sons	32
131	Hancor	24
110	Innovative Equipment	15
135	Jacobsen	40
125	John Deere	30-31
115	Kincaid Enterprises	22
122	Lebanon Total Turf Care	28
113	Lofts Seed	17
144	Master of the Links	37
111	Mike Young Designs	15
114	O.M. Scott	18-19
132	Page Com	24
150	Page Com	37
108	Perfection Sprinkler	12
139	Plantstar Inc.	29
140	Precision Small Engine	28
153	Precision Tool Co.	38
151	Precision Tool Co.	38
106	Rhone-Poulenc	9
120	Seed Res. of OR	26-27
123	Southern Concrete	29
146	Syntennico	37
104	Toro Comm'l. Prod.	6-7
129	Toro Irrigation	35
141	USA 2-Way	32
143	Warehouse Radio	37
147	Willadsen Scale Models	37
101	Yamaha	2
149	Yard Edge	37

This index is provided as an additional service. The publisher does not assume any liability for errors or omissions.

Golf Course Marketplace

NEW ROPE-LOC™
 Finally, a rope and stake system that works! Simple but unique... the ROPE-LOC system eliminates annoying or unsightly rope failures. Simple, clean, durable — ROPE-LOC stakes are made of 3/8" steel and finished in attractive yellow epoxy coating.

As shown in the blow-up, rope is securely "wedged" in place.

Call for a special introductory offer.
 1-800-253-2112 / In Michigan call Collect: 313-429-9571
PRECISION TOOL PRODUCTS CO. • 7836 Bethel Church Rd. • Saline, MI 48176

For free information circle #151

2-WAY PORTABLE SYSTEM

ANDERSON INSTRUMENT & supply co.

\$395 INCLUDES:
 2 Radios
 2 Holsters
 2 Charging Systems

2 WEEK FREE TRIAL
 MADE IN THE USA

800-333-6212
 1850 Kimball Rd. S.E., Canton, OH 44707

For free information circle #152

ACCU-GAGE

Accu-gage is a precision measuring instrument for making highly accurate height-of-cut adjustments on greensmowers or other precision mowers.

—FEATURES—

- Adjustments can be made with the gage on the mower. Simply read the gage while turning the adjusting knob.
- Measurements are made at the front edge of the bedknife regardless of bedknife wear.
- Eliminates the inaccurate "feel" method of old-type adjusting bars.
- Available in 15", 18" and 24" bars.

For more information on this and other precision tools call Toll Free:
 1-800-253-2112 / In Michigan call Collect: 313-429-9571
PRECISION TOOL PRODUCTS CO. 7836 Bethel Church Rd. • Saline, MI 48176

For free information circle #153

Environmental Construction INC.

GOLF COURSE CONTRACTORS

Quality installation of new irrigation systems, renovations and conversions.

Call for a list of our satisfied customers

7195 Templeton Gap Road
 Colorado Springs, CO 80922
 719-591-2132 • 800-666-2132 • FAX 719-591-2545

For free information circle #154