

ON THE MOVE

Int'l Management Group promotes Rielly to Asia

Mike Rielly is in the new post of director of real estate in Asia for International Management Group, and is based in IMG's Tokyo office.

Since graduating from Stanford University in 1985, Rielly has worked in IMG's Cleveland office, where he managed the affairs of PGA Tour players Peter Jacobsen, Ray Floyd, Tommy Nakajima and Isao Aoki and was responsible for IMG's U.S.-based golf course design and resort management projects.

IMG has identified Asia as a high-growth market for its recreational real-estate activities. Several IMG's clients, like Arnold Palmer, Gary Player, Greg Norman, Ray Floyd, Curtis Strange, David Graham, Bernhard Langer and Nick Faldo, design golf courses.

IMG Developments, Ltd. acts as project manager or lead developer for recreational real-estate developments around the world.

Pebble Beach names O'Toole tourney head

Robert "Ducky" O'Toole has joined Pebble Beach Co. golf division as golf tournament coordinator, according to Paul Spengler, vice president of golf.

O'Toole will coordinate golf tournaments at Pebble Beach Golf Links, The Links at Spanish Bay and Spyglass Hill and Del Monte golf courses. He will act as liaison between all visiting golf groups and the golf courses.

O'Toole, a graduate of St. Mary's College in Moraga, Calif., is a former member of the Professional Golfers Association of America. He was most recently employed as manager and development consultant at Denise Duffy and Associates in Monterey.

Stier head pro at Temeku CC

Landmark Club Management has named Ken Stier to be Head Golf Professional at Temeku Country Club, an 18-hole golf facility in Rancho California, Calif. The announcement was made by Joe Hough, director of consulting and management services for Landmark Land Co., Inc.

Stier was formerly first assistant professional at Oak Tree Country Club in Edmond, Okla., where he was in charge of accounting for the golf shop and was involved in tournament organization and member relations.

Stier attended Central State University and Oklahoma State University. He was in private business for 14 years prior to joining Landmark Land Co.

Rutgers' Indyk joining Greenway

Dr. Henry Indyk, a nationally and regionally honored turfgrass specialist, is retiring from Rutgers University on June 30 and will join The Greenway Group of Horsham, Pa.

A professor for more than 30 years, Indyk will be chief agronomist with Turfcon, a recently formed division of GSI Consultants, Inc., which is a company managed by The Greenway Group. He will continue work on the construction, renovation and maintenance of athletic fields and other sports turf facilities.

His appointment was announced by group coordinator Thomas L.

Ripley Sr. of The Greenway Group, who said Indyk "played a vital role in elevating the term 'professional turfgrass manager.'"

Indyk was instrumental in the formation of the American Sod Producers Association, the New Jersey Turfgrass Association, the Cultivated Sod Association of New Jersey, the Irrigation Association of New Jersey and the Bergen County Landscape Contractors Association.

The Irrigation Association named Indyk its Man of the Year in 1978. His other honors include the New Jersey Turfgrass Hall of Fame Award in 1985 and the Golf Course



Dr. Henry Indyk

Superintendents Association of New Jersey's Distinguished Service Award in 1989.

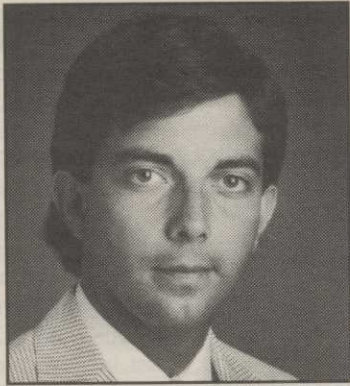


Fister named senior vp for Hale Irwin

Patrick J. Fister has been promoted to senior vice president of development with Hale Irwin Golf Services, Inc. He manages the development of new and current golf course projects and coordinates the firm's design, construction and marketing programs.

Fister previously served as vice president.

Hale Irwin Golf Services is an international golf course design, development and management company based in St. Louis, Mo. Founded in 1986 by Irwin, PGA Tour professional and golf course



Patrick J. Fister

designer, the company designs private, resort and public golf courses as well as golf communities worldwide. It also provides expert management and operational support to existing golf courses.

Spiroplaus La Costa's choice

John M. Spiroplaus, PGA master professional, has been named director of golf at La Costa Hotel & Spa in Carlsbad, Calif.

"Our No. 1 choice was John Spiroplaus, a man who has proven he is America's No. 1 golf director," said Senior Executive Vice President Klaus Ottman.

Spiroplaus is one of only 67 PGA pros to hold the master professional classification.

For the past 18 years, he has served as PGA head golf professional and director of golf at the Olympia Fields Country Club in Illinois. In 1985 and 1989 Olympia Fields won the title of "Best Golf Operation" for a private facility,

conferred by Golf Digest Magazine's Golf Shop Operations.

In 1977, and again in 1986, Spiroplaus was honored with the Horton Smith Award for his contributions to education and training programs for PGA professionals. He was named 1983 Golf Professional of the Year for the Illinois section of the Professional Golfers Association.

He has actively served on the PGA's National Education Affairs and National Rules committees, has been a faculty member of PGA Business Schools since 1976, and is coordinator of the rules workshops and head professional training seminars.

Lasco puts Juwig in new irrigation post

Bryan M. Juwig has been named to the newly created position of irrigation market manager at Lasco Fittings Division, Philips Industries Inc., according to Quentin P. Gallivan, vice president of sales and marketing.

A board member of the Arizona Chapter, American Society of Irrigation Consultants, Juwig has over a decade's experience in various phases of golf and irrigation markets, Gallivan said.

Elsewhere...

Columbia ParCar Corp. has announced the appointments of **Larry Josephson** as materials manager and **Paul Hoth** as assembly line supervisor. Prior to his appointment, Josephson worked at Trek Bicycle Corp. in the position of materials manager. Hoth held his position for many years before a short stint away to work for a local Columbia ParCar authorized service center.

David Chapman is the new regional sales manager in Illinois for the Kubota Tractor Corp.'s Northern Division, while **Jerry C. Wren** has been appointed pump and generator supervisor for the Southeast Division. Chapman had previously served as consumer products dealer development manager for the Northern Division. Wren joins Kubota with more than 17 years experience, having worked as vice president and general manager for a distributor of Onan generators.

Greg Freyermuth, formerly with Wheeler Fertilizer, has joined Sunbelt Seeds of Norcross, Ga., an affiliate of Lofts Seed Inc., as Florida sales manager. Freyermuth will also coordinate the new sales arrangement between Sunbelt Seeds and the Par Ex division of Vigoro Industries.

The Professional Business Group of The O.M. Scott & Sons Co. has announced the appointment of five new technical representatives for the Golf Sales group, according to Manager Dave Heegard.

Tom Heid, Tom Brown, Andrew Bourne, Marque Randall and Rick Styer each will be responsible for providing increased technical service, products and programs to golf course superintendents and turf managers within their regions.

Heid is responsible for northern Michigan, and Wisconsin counties bordering the Upper Peninsula; Brown for western North and South Carolina and the Augusta, Ga., area; Bourne for the Coachella Valley and San Bernardino in California and Las Vegas, Nev.; Randall for Utah, southern Idaho, western Wyoming, eastern Nevada and eastern sections of Oregon; and Styer for western Washington.

Now Mow two days for the price of one

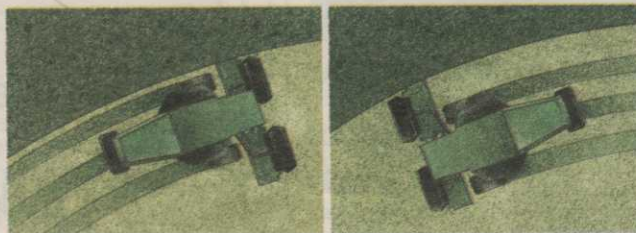
Offset cutting units. They are the key to this new mower's success. Meet the John Deere 2243 Professional Greens Mower. The first triplex ever to offer a head-on solution to compaction.

Until now, the built-in price you've always had to pay for triplex productivity has been increased compaction wear around the perimeter of your greens. That price just got cut in half.

The 2243's patented offset design allows you to spread machine weight over twice as much area. Simply change the direction of your perimeter cut each day, and your tires travel over completely different ground. Your greens get a welcome rest.

And that's just the start. The 2243 also features a liquid-cooled, 18-hp, gas engine; steerable cutting units; power steering; hydrostatic drive; ORFS hydraulic fittings and more.

Call 1-800-544-2122 for the location of your nearest distributor. Or write John Deere, Dept. 956, Moline, IL 61265 for free literature. Because you and your greens deserve the best—and this is as good as it gets.



Offset cutting units on the 2243 allow you to stagger your wheel tracks by simply changing your direction of cut.



Nothing Runs Like a Deere®