

News

Panel advises new course in Kansas City

Building a new golf course was the unanimous recommendation of the Kansas City (Kan.) Golf Course Advisory Committee to the city commissioners in early November.

The possibility of a nine-hole addition to Sunflower Hills Golf Course, the site of the meeting, was considered. But the advisory committee made it clear it preferred an 18-hole course that could be located along Interstate 435.

Sunflower Hills is a profitable municipal course where 55,000 rounds are played annually.

The advisory committee discussed the possibility of bringing in a private developer and opening the area around the course to residential development. Any decision on course expansion, however, must be made by the city commissioners.

CC of Indiana team a winner

A team from the Country Club of Indiana in Baton Rouge, La., won first place in the third annual John Deere Team Championship, Nov. 18-19 at the Jack Nicklaus Resort at PGA West.

The tournament is the only PGA-sanctioned competition that provides an opportunity for golf professionals and golf course superintendents to team up with other club officials in a national championship.

The winning team of Tolby Strahan, Dean Alexander, Luis Romero, Ben Skillman and John Deere golf and turf distributor Howard Ruiz, beat 35 other teams in the two-day, 36-hole event. More than 700 teams competed in sectional tournaments through the year to determine the 36 finalists for the modified scramble tournament.

Rounding out the top 10 were teams from Twin Oaks Country Club in Springfield, Mo.; Elm Grove GC in Lubbock, Texas; Marbella Golf and Country Club in San Juan Capistrano, Calif.; Olympia Golf and Country Club in Olympia, Wash.; Seven Springs Resort in Champion, Pa.; Schuyler Meadows Club in Loudonville, N.Y.; Bob O'Link GC in Highland Park, Ill.; Madden Golf Courses in Dayton, Ohio; and Mission Hills Country Club in Rancho Mirage, Calif.

NE supers net research money

The Golf Course Superintendents Association of New England reports a successful first Turfgrass Research Fund Golf Tournament, held at the Dedham Polo and Country Club in Dedham, Mass.

The September event netted approximately \$20,000 from the tournament and contributions.

USGA 'perfect course' exhibit open at Far Hills

A new exhibit, "In Search of the Perfect Course," is on display at Golf House, the U.S. Golf Association's museum in Far Hills, N.J.

The new exhibit, which opened Nov. 27, is the fourth in a series of special exhibits at Golf House. "In Search of the Perfect Course" is a review of golf course architecture. The display features quotes, photographs and paintings of a number of prominent architects, such as

A.W. Tillinghast, Donald Ross, Alister Mackenzie, Robert Trent Jones, Jack Nicklaus and Arnold Palmer, as well as paintings and sketches of some of the courses they designed.

Included in the display is a drawing on silk, a recent acquisition, of the layout of Glenaeles in Scotland. The exhibit also includes original diagrams and paintings.

The new display will be on exhibit until the fall of 1990.

Citizens group forms to stop planned project

A Huntington Beach, Calif., citizens group has started a petition drive to block a proposed golf course in the city's Central Park.

Huntington Beach Tomorrow/Save Our Parks filed a petition with the city in late October calling for an amendment to the city charter that would require voter approval of any action affecting passive use of the city's parks and beaches.

The City Council's Sept. 5 approval in concept of an 18-hole, 105-acre golf course on unimproved land in Central Park is at the root of the controversy.

The council approved the plan as a way to turn unimproved land into developed parkland at no cost to the city. The \$20 million to build the course would be borne by a developer who would lease the land.

Opponents counter with surveys revealing that most citizens want the land to remain set aside for passive use. Their petition, which needs 20,000 signatures to appear on the ballot, would require a majority of both the city council and voters before development could take place.

Watertronics Pumping Systems; Meeting Your Irrigation Management Needs

Effective golf course irrigation is one of your major concerns, as a superintendent. Maintaining your system can be time-consuming and expensive.

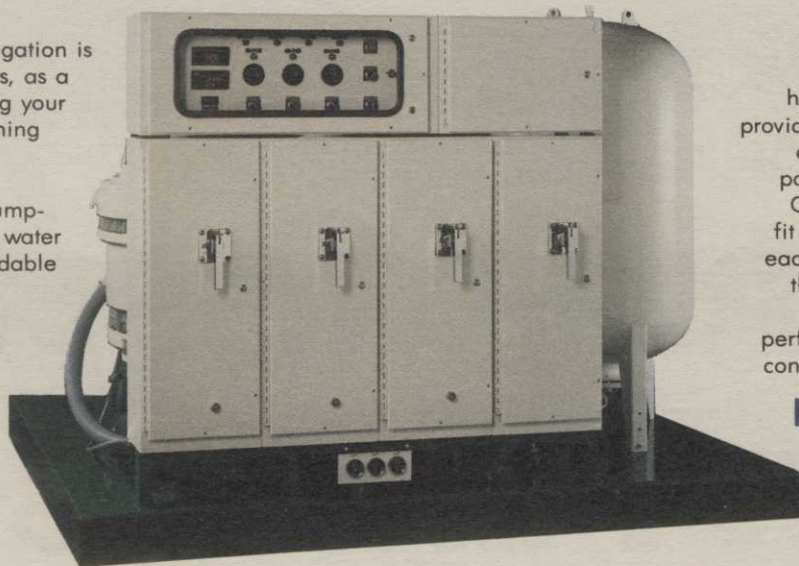
Now Watertronics™ electronically controlled pumping systems make efficient water management simple, affordable and automatic. Advanced microprocessor technology monitors and controls flow, pressure, pump sequence and water usage. Precisely and reliably. To save you time and money, year after year.

Watertronics systems are also flexible. Changing the programming to fit new course configurations or new pumping needs is simple. And the spare preprogrammed control module assures you of uninterrupted operation.

Excellence in system design and construction

Watertronics systems include a selection of high quality pump configurations:

- Vertical Turbines
- Centrifugals
- Submersibles
- Wet Pit Systems
- Variable Speed
- Booster Stations



Custom fabricated modular controls to meet your local electrical code requirements.

Custom designed VT 1200 model delivers up to 1200 GPM at 125psi discharge pressure on only a 52" x 96" base.

High engineering and design standards plus heavy-duty construction provide the rugged dependability you expect in a packaged pump station.

Custom-design services fit Watertronic systems to each application. No "off the shelf" models, that may not give you the performance capability or configuration you require.

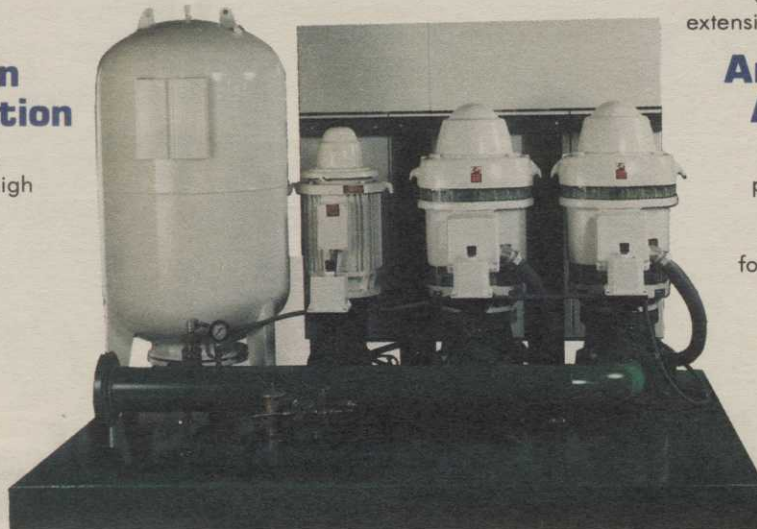
Retro-Fit Controls Packages

Watertronics microprocessor based technology and electrically actuated regulating valves can easily be added, increasing performance and efficiency. This means you can retrofit your existing pump station without extensive and expensive renovation.

Amazingly Affordable

High-tech doesn't mean high price. Watertronics systems are surprisingly affordable. But don't just take our word for it. Call us today to find out how easy and cost-effective electronically controlled pumping systems can be.

Toll Free: 800-356-6686
Wis. Collect: (414) 782-6688



13400 A Watertown Plk. Rd., Elm Grove, Wisconsin 53122

For free information circle #102