

## NEWS

**McCumber  
Japan-bound**

Mark McCumber & Associates has been commissioned by Random Associates to design Japanese golf course projects in Hiroshima and Utsunomiya.

Construction at Hiroshima is expected to begin this year. Negotiations for the purchase of additional land is underway at Utsunomiya, where preliminary plans should be completed by this fall.

**Palatine faces five-year remodeling**

Approximately \$2 million in improvements appear in the Palatine, Ill., master plan for the Palatine Hills Golf Course.

The 18-hole, Edward Lawrence Packard-designed course is in line for a dozen cosmetic improvements over the next five years. Some have already been completed or are un-

der way.

A fourth irrigation well was added last summer. Sewer and water hook-up to the village is taking place. Two rain-shade shelters have been approved and should be ready when the course opens in April. The Killian Design Group has designed a layout for a 20 tee-off box driving range.

Another \$1 million has been proposed for a computerized irrigation system and improved landscaping. Additional trees and shrubs have also been mentioned.

A recommendation for a timetable for improvements was scheduled to be submitted to the park board in January.

**\$6.8 million in changes ahead at Schaumburg**

The Schaumburg, Ill., Park District is planning \$6.8 million in renovations to a course it bought last year.

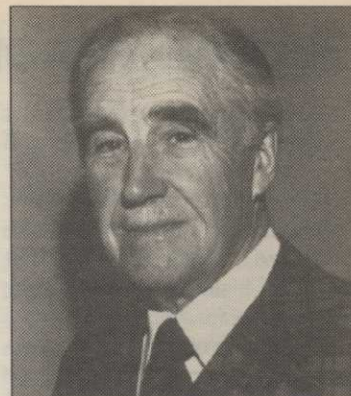
The Park District agreed to pay \$15.5 million for the former Golden Acres golf course a year ago. It is

now considering a three-phase facelift to the renamed Schaumburg Country Club that will make the 27-hole facility more playable.

The first phase calls for creation of a driving range, doubling the parking lot from 180 to 350 spaces

and constructing a new maintenance building. The combined cost is estimated at \$3.4 million.

Subsequent improvements include green and tee expansions of the second nine holes, a new clubhouse and more second nine holes.



Robbie Robinson

**Architect  
Robinson  
dead at 82**

C.E. "Robbie" Robinson, credited with designing some of the most outstanding golf courses in Canada, died Dec. 29 at the age of 82.

The president of the American Society of Golf Course Architects in 1961-62 and 1971-72, Robinson entered practice as an architect in 1948 and founded C.E. Robinson & Associates, Ltd., in 1961.

He had become interested in course design during his undergraduate years when he updated and renovated the Fenelon Falls, Ontario, course of Canadian statesman and magnate Sir Joseph Flavelle.

After graduating in 1929 from University of Toronto's Agricultural College in Guelph, Ontario, he served an apprenticeship with famed Canadian golf architect Stanley Thompson, who arranged a position for Robinson as course manager and superintendent at Sunningdale Country Club in London, Ontario.

Robinson returned to Thompson's firm in 1936, then served with the Royal Canadian Air Force during World War II before moving on to a job in site selection and housing development with the Canadian government and later opening his business.

He further studied soil science and agronomy at Cornell University and turf management at the University of Massachusetts, and became recognized as an expert on turfgrass culture.

Robinson served several years as director of the Royal Canadian Golf Association's Green Section.

He designed Upper Canada Village Golf Club in Morrisburg, Ontario; Brudenell Golf Club on Prince Edward Island; John Blumberg Winnipeg Municipal Course in Winnipeg; Cape Breton Golf Club in Nova Scotia; Hamilton Golf & Country Club in Ancaster, Ontario, and other courses in the United States, Mexico, the Caribbean and South America.

He remodeled St. George's Golf and Country Club near Toronto and Cherry Hill Golf and Country Club in Ridgeway, Ontario, for the 2968 and 1972 Canadian Opens, respectively.

Survivors include his wife, Thelma, of Paris, Ontario; one brother and three sisters.

Donations may be made to the Canadian Cancer Society.

# Cut aeration labor by 75 percent.

**Introducing the new Cushman  
Core Harvester™ attachment.**

Now one person in a Turf Truckster® vehicle can scoop up, load and dump aeration cores in the same time it takes three workers with shovels. In fact, with the revolutionary new Core Harvester attachment, you can clean up an average 7,000 sq. ft. green in about 15 minutes — two to three times faster than you've ever done it before.

**As gentle as it is quick.**

The Core Harvester's unique

spring-balanced parallel link flotation system protects your fine turf from scuffing. Because they float, the Core Harvester's gathering blades automatically adjust to undulating greens for quick, gentle operation.

The Core Harvester attaches easily to Turf Trucksters, and retrofits 1985 and newer models. After the Core Harvester has been attached, it's easy to take off by just removing four bolts, two hoses, and you're ready to go.

There's nothing else like it on the market today. The new Core Harvester, only from Cushman. For a convincing demonstration on your course, contact your Cushman dealer today. Or call toll free: 1-800-228-4444.

**CUSHMAN®**  
**BUILT TO LAST**

8033 © Cushman Inc. 1990. All rights reserved.  
A Ransomes Company  
P.O. Box 82409, Lincoln, NE 68501