

Irrigation conclave featuring many experts

David N. Kennedy, director of the California Department of Water Resources, will deliver the keynote address at the opening session of the 1989 Irrigation Exposition at the Anaheim (Calif.) Convention Center, Nov. 12-15.

Kennedy, who will speak at 10 a.m. Monday, Nov. 13, will be one of several technical and business management experts speaking at the conclave coordinated by The Irrigation Association.

Kennedy was appointed in 1983 by California Gov. George Deukmejian after serving nine years as assistant general manager of the Metropolitan Water District in Southern California.

He had been an engineer with the Department of Water Resources for six years.

The conference will cover the latest developments in turf and landscape irrigation and agriculture in two days of presentations. On Monday the California Department of Water Resources will present two concurrent sessions on agricultural water conservation programs and turf and landscape topics.

DWR's Marsha Prillwitz will moderate Monday's turf/

landscape session on what tools are available for landscape professionals to survive dry times. Agtech Associates President Gary Kah and a representative of the Green Industry Council will cover the Landscape Water Management program, xeriscape, residential water audits and landscape ordinances.

Tuesday's session will include National Xeriscape Council President Bruce Adams speaking on "Xeriscape and the Irrigation Industry"; School of Architecture and Environmental Design

landscape architecture director Gary Robinette speaking on "Urban Landscape Water Management"; Aqua Engineering's Stephen W. Smith and Robert Beccard speaking on "CADD Design of Landscape Irrigation Systems" and "Landscape Irrigation with Effluent Water"; and Drip Irrigation Specialties owner Bob Galbreath speaking on "Water Saving Micro-Irrigation Solutions for Urban Landscapes."

Management seminars are planned on Tuesday and

Wednesday. On Tuesday, Robert A. Franciose, IBM's manager of marketing development for the wholesale services industry, will speak on "Using Technology To Gain Competitive Advantage," and Applied Scholastics President Ingrid Gudenas will cover "Communicating Effectively Under Stress."

On Wednesday, Bruce Merrifield will discuss "Marketing Strategies for a 'Glut Economy'" and "Making Perfect Service Happen."

Prior to the exposition opening, The Irrigation Association will

conduct four special short courses on Saturday and Sunday, Nov. 11-12, at the Anaheim Marriott designed to improve professional expertise and help people prepare for IA certification.

The courses are Landscape Contracting and Installation, Designer Preparation, Water Management, and Landscape Irrigation Systems Operation/Maintenance.

More information on the exposition is available from the IA at 1911 North Ft. Myer Drive, Suite 1009, Arlington, Va.; 703-524-1200.

Design

Continued from page 14

has moved up to 1 1/4 to 1 1/2 inches per week from 1 to 1 1/4 inches per week.

"When customers on large jobs such as golf courses are spending in six figures, they look for protection for their investment," Taliaferro said.

"If a pump is too small," Manley explained, "it works too hard and it will break under the strain. If it's too large, it's fat and lazy, delivering a low efficiency of 40 to 50 percent, versus 70 to 80 percent, which is ideal."

Taliaferro added, "If you use a pipe that's too small you have to pay for it with more horsepower over the life of the system. It's better to spend more on pipe diameter once than to pay more on a continuing basis for energy."

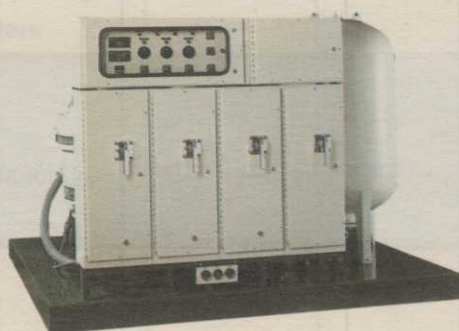
"A good design loses no more than 20 percent of available pressure under highest demand," he said. "A poorly designed system may lose 30 to 40 percent to the farthest sprinkler head. So we start at the farthest head and work back to the pumphouse. If we lose more than 20-percent pressure, we change the system to make it 20 percent or less. We can use larger pipe, smaller nozzles or loop lines so less pressure is lost."

Mark L. Gunderson works for Century Rain Aid.

The Choice Is Yours

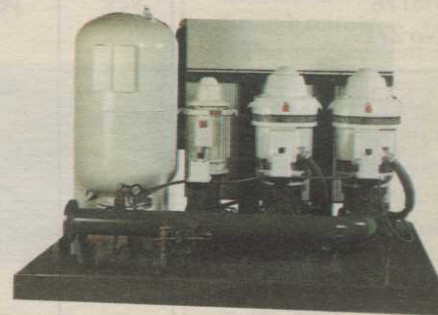
There are over a dozen different pump station manufacturers on the market today, each with their own specific design and control methods. Choosing the right pumping system can be a frustrating experience.

Now you can make the right choice. Match your irrigation requirements to one of Watertronics' quality engineered pumping systems, all built for years of dependability at affordable prices.



A

PREFABRICATED PUMPING STATIONS
Vertical Turbine pumping systems with fixed or variable speed motor controls. Centrifugal pump stations for wet-sump, flooded suction or booster applications. All are equipped with Watertronics state-of-the-art control panels plus your choice of electronic or conventional hydraulic regulating valves.



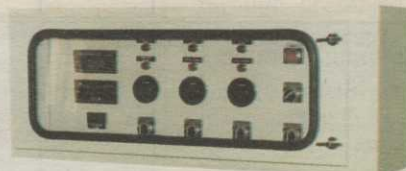
B

LANDSCAPE/SPORTS TURF PUMP STATIONS
Compact, efficient, and affordable are these self-contained single pump systems. Suction Lift/Wet Sump models feature capacities of 50-600 GPM, with Booster model capacities up to 1000 GPM.



C

ADD 1980'S TECHNOLOGY TO YOUR PRESENT SYSTEM
Watertronics retrofit control panels and electronic regulating valves can add new life to your existing pumps. Eliminate pipe shattering surges. Upgrade your control system to provide accurate pump sequencing, consistent pressures and economical irrigation at affordable prices.



D

HYDRAULIC SPRINKLER CONTROL BOOSTER STATIONS
Provides precise filtered supply line pressure for your hydraulically controlled sprinklers. They feature multi-stage booster pump, replaceable bladder tank, and pressure regulating controls.



E

PROFESSIONALLY TRAINED SERVICE REPRESENTATIVES
Watertronics utilizes factory trained service representatives, and knowledgeable sales professionals to meet all your sales and service needs.



So, if your system's not currently pumping up to par, contact a Watertronics representative, call toll free, 1-800-356-6686. In Wisconsin 414-782-6688.

WATERTRONICS
ELECTRONICALLY CONTROLLED PUMPING SYSTEMS

13400 A Watertown Plk. Rd., Elm Grove, Wisconsin 53122

For free information circle #115