

SB
433
.G4
V.1
NO.3

BULK RATE
U.S. Postage
Paid
Crystal Lake,
IL 60014
Permit No. 82

GOLF COURSE NEWS

VOLUME 1 NUMBER 3
MAY 1989

Jones challenges architects

Robert Trent Jones Jr. took over the gavel as president of the American Society of Golf Course Architects in April and promptly gave a rallying call for the building of 5,000 new golf courses in the United States in the next 10 years.

Jones, of Palo Alto, Calif., who took over the reins from Pete Dye, told ASGCA members at their annual meeting in Pinehurst, N.C.: "The National Golf Foundation says we must add at least one golf course every day for the next 10 years to meet the exploding demand for golf throughout the country."

"We should probably round that figure off to 5,000 before the year 2000 and consider it one of the greatest challenges that this organization has ever faced."

Jones said it is also "a tremendous challenge to the creative energy and talent of each one of us individually. The game has never been more popular than it is today, and it is our responsibility to meet that

Continued on page 29

1988 Golf Facilities in the U.S.

	1987	1988	Change Number	Pct.
Total Facilities	12,407	12,582	+175	+1.4
New Facilities	110	161	+51	+46
Total Courses	13,436*	13,626	+190	+1.4
New Courses	145*	211	+66	+46
Courses under Construction	223*	334	+111	+50
Courses in Planning	290*	382	+92	+32

* — Estimated.

Courtesy of National Golf Foundation

INSIDE

Features

16 COLUMBUS
bubbles over in courses

18 WILDFLOWER
innovations spruce up courses

Golf Participation in the U.S.			
	1987	1988	Change
All Golfers (played at least 1 around)	21.7M	23.4M	+7.8
Frequent Golfers (played 25 rounds)	4.86M	5.62M	+15.6
New Golfers	2.10M	2.21M	+5.2
Rounds Played			
Total	434M	487M	+12.2
Average	19.4	20.8	+7.2

29 POPULARITY of
golf continues to rise

Departments

SUPER FOCUS
Felix Paguaga is a super course-shaper 10

ON THE LINKS
Dodgertown's "C.H." Thomas a name to remember ... 11

ASSOCIATION NEWS
CMAA's Edward Hoffman eyes grassroots needs.....8-9

NEW COURSES
From East Coast to West, architects busy.....12-13

ON THE MOVE
E-Z-GO gets new president, Ralph Olson22

GOVERNMENT UPDATE
NCA hires veteran of Washington politics ...14-15

NEW PRODUCTS
Manufacturers show off their new lines.....25-28

Construction up 45 %

The growing wave of golf course construction in the United States rose 45 percent in 1988, according to the latest research by the National Golf Foundation.

With Florida leading the way for the fourth straight year, 211 new golf courses opened for play in 1988, compared to 145 in 1987.

Another 716 were either under construction or being planned, compared to 513 in 1987, the study found.

Florida accounted for 35 new courses, while Texas followed with 20, Georgia with

Continued on page 30

Oregon's seed industry in trouble

BY MARK LESLIE
Oregon's State Legislature is considering a field-burning ban that would endanger the country's major providers of cool-season golf course grasses.

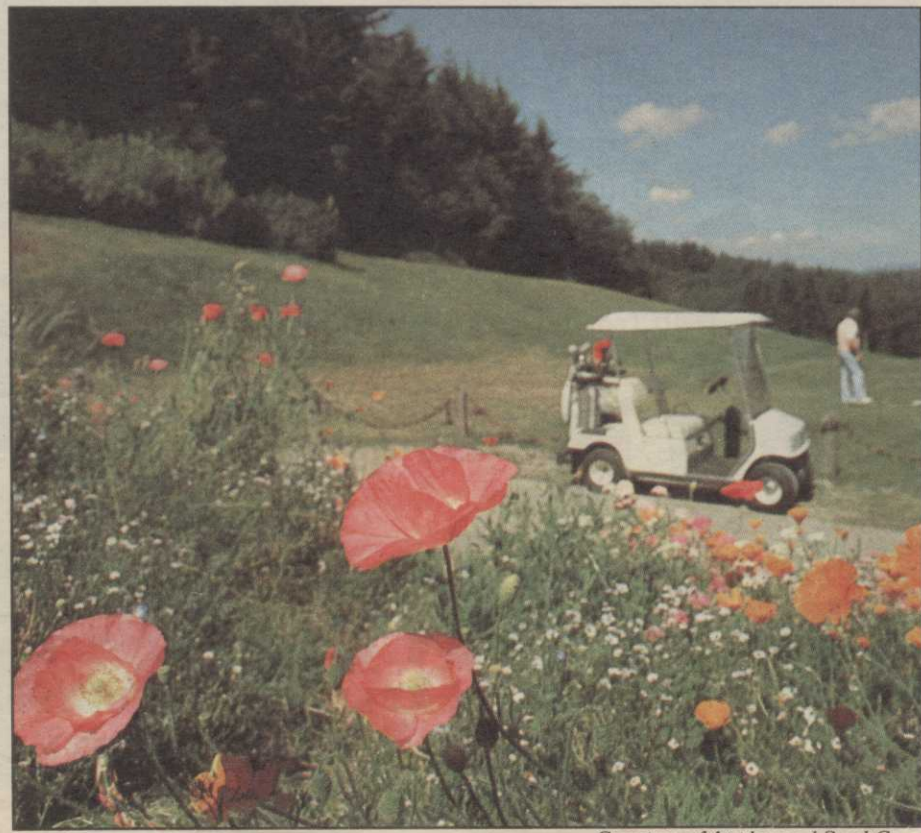
Oregon's 70 seed companies provide all U.S.-produced ryegrass, bentgrass,

Chewings and creeping red fescues, half the U.S.-produced tall fescue and about one-fourth its bluegrass.

But in the process, between mid-July and the end of September each year, the 800 farmers who grow seed burn their fields to purge them of the weeds and disease that

endangers the grass seeds. And last year when one farmer was burning a field, the wind changed direction, blew the smoke onto a major highway, and a seven-death, 37-care pileup resulted.

Continued on page 14



Courtesy of Applewood Seed Co.

Superintendent Dick Schmidt has beautified his Port Ludlow (Wash.) Golf Course. See pages 18 and 19 for the lowdown on innovations in wildflower use.

ClubCorp. contracted for Moscow site

BY MARK LESLIE
A U.S.-Russia joint venture company has contracted Club Corp. International to build and then manage an 18-hole golf course, country club and conference center outside Moscow.

JV Dialogue, a company formed in November 1987 by Chicago Research and Trading owner Joe Ritchie and six Russian firms, plans the complex as part of a technical village it is building on the collective farm Leninski Lutch (Lenin's Light) outside Moscow.

Ritchie formed Management Partnerships Inc. to formally separate CRT from the Russian project. But CRT Executive Vice President Gus Pellizi is working on the plan and is upbeat about its prospects.

"The concept of the Leninski Lutch project is to develop a village which would enable people to live and work in a pleasant place with a pleasant environment," Pellizi said. "We thought what we would like to do was

Continued on page 29