

NEW PRODUCTS

Lesco offers turf marking paint

Lesco, Inc has introduced Tournament Turf Marking Paint for golf courses, athletic fields, irrigation and landscape installation and other turf uses.

The new, economical, 16-ounce can provides 33-1/3 percent more paint than competitive brand cans containing 12 ounces.

The Tournament Turf Marking Paint is available in four vivid colors

— white, yellow, red and fluorescent red — in a lead-free formula.

The can fits all standard marking devices and operates in an inverted position.

Lesco is headquartered in Rocky River, Ohio.

For more information, contact Marta E. Geiger, Lesco, Inc. 216 333-9250. **Circle No 350**

Cushman adds water-cooled engine

Cushman has expanded its line of Cushman Front Line mower models with the addition of two new water-cooled gasoline engine tractors.

Available in both 3-wheel and 4-wheel models, the newest unit features a 4-cycle, 3-cylinder Teledyne-Wisconsin engine that develops 26 hp at 3,600 rpm. The engine has a displacement of 60.88 cubic inches, and develops 44.7 foot-pounds torque at 2,500 rpm.

The model "809" 4-wheel Front Line is equipped with hydraulic power steering and is capable of a zero turning radius, using the



traction assist brake on the inside wheel.

The "808" 3-wheel Front Line has manual steering and can turn in zero radius for maneuverability. Outside turning circle is 150 inches when the tractor is equipped with the 72-inch mower deck. Mower decks and other attachments are driven through a heavy-duty OMC-built PTO clutch.

A warning horn signals the operator in the event coolant temperature should ever rise above safe levels. An automatic seat switch shuts down the engine if the operator should leave the seat with the PTO engaged.

Contact: Cushman, P. O. Box 82409, Lincoln, Neb. 68501; 800-228-4444. **Circle No 302**

Having trouble getting bentgrass?

Try Jamestown

Chewings Fescue

It's no secret that bentgrasses are in short supply. It's hard to get enough creeping bentgrass.

But there is a solution: Jamestown chewings fescue! After all, chewings fescue has been used on golf courses for over three centuries. And there's none better than Jamestown. It's been proven in tests at the University of Rhode Island and on prominent courses for more than 20 years.

For new greens

Cut your bentgrass needs in half by using a mix which is 50% Jamestown and 50% bentgrass by seed weight. Not only will this match the performance of a solid bent, but will give some added benefits as well.

Jamestown establishes quickly and puts the greens into play faster. It will perform as a companion grass for up to 10 years as the bentgrass matures and gradually dominates the turf.

For repairs

Use 3-4 pounds of Jamestown with 1/2 lb. of bentgrass per 1000 square feet. This mixture has proven very effective in emergency repair of damaged greens.

For winter overseeding

Consider Jamestown as part of a mix for overseeding southern Bermudagrass greens, tees and lawns. Jamestown will enhance turf performance during winter months.

So whether it's to help out with a bentgrass shortage, or add benefits to your overseeding program, try Jamestown chewings fescue.

Jamestown chewings fescue played a big part in developing The Links at Spanish Bay in Monterey, CA:

Greens: 80% Jamestown, 20% Colonial bentgrass

Tees: 100% Jamestown

Fairways: Blend of chewings fescue including Jamestown

Roughs: Mixture of fescues including Jamestown chewings, Reliant hard, sheep and creeping red.



Lofts Seed Inc.

World's largest marketer of turfgrass seed
Bound Brook, NJ 08805
(201) 356-8700

Lofts/Great Western, Albany, OR (503) 928-3100 or (800) 547-4063
Sunbelt Seeds, Inc., Norcross, GA (404) 448-9932 or (800) 522-7333

To locate the Lofts' distributor nearest you, call
(800) 526-3890 (Eastern U.S.) • (800) 547-4063 (Western U.S.)

For free information circle #135

Moisture-Stat eliminates over-watering

The Moisture-Stat line from Griswold Controls adds moisture sensing and monitoring capability to any existing electro-mechanical or solid state controller to eliminate over-watering. Moisture-Stat allows watering to occur only when it's needed.

The system consists of a control panel with moisture level indication, adjustment and by-pass provisions along with four sets of special stainless steel probes. Each valve zone can be assigned to a set of probes.

Moisture-Stat II offers a convenient front-panel display that keeps track of the percentage of water saved. The system pays for itself in a few short months.

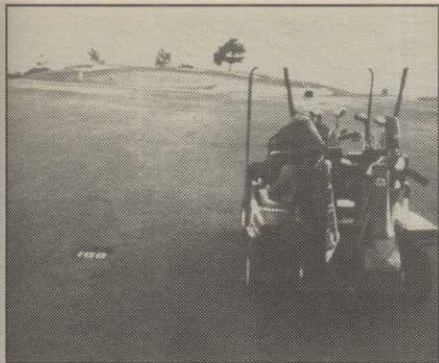
For more information, contact: Marketing Department, Griswold Controls, 2803 Barranca Road, Irvine, CA 92714; 714-559-6008. **Circle No 349**

Course Cover controls erosion

Course Cover, a new line of erosion control/revegetation products for the professional turf manager has been introduced by North American Green.

Course Cover includes a line of four products designed to control erosion on both slopes and in drainage channels. The blankets reduce rainfall impact, reduce velocity of run-off water, and transportation of soil particles. Sewn together between two polypropylene nets, the blankets stay in place until a vegetative cover is established.

Write or call North American Green 1-800-772-2040 or in Indiana 812-867-6632. **Circle No 335**



Toro's 224 enters gas-power market

After introducing the company's Groundsmaster 220-O diesel trim mower, Toro found that some users preferred gas-powered mowers. The new 224 is Toro's response.

Customers had noted that groundskeepers' current key need was for a compact trim mower that combined maneuverability and high productivity with comfort and servicing ease.

The 224 features a three-cylinder, liquid-cooled Mitsubishi GL3C engine that delivers 24 horsepower. It is a gasoline conversion of the 220-O's L3C diesel engine.

The 224 offers more horsepower than the diesel version's 20.5 because gasoline has a higher energy content than diesel fuel.

Groundsmaster mowers maintain opera-



tor comfort and improve handling ease by using a new power-assisted, four-link steering design.

Contact The Toro Co., Commercial Division/Marketing Services, 8111 Lyndale Avenue South, Minneapolis, Minn. 55420. **Circle No 303**

Clarke introduces trash pumps

A new line of trash pumps with quick access to the impeller, volute and casing for cleaning and maintenance has been introduced by Clarke Power Products.

The self-priming, centrifugal trash pumps are available in 2-, 3- and 4-inch sizes.

Clarke says the pumps are ideal for water that contains compounds often found in agriculture and construction applications. The pumps have a steel frame and overall lightweight, compact design for easy handling and moving to and from job sites.

To achieve maximum fuel efficiency, the 2- and 3-inch pumps use Honda engines and the 4-inch pumps feature Robin engines.

Contact Craig Valentine, Clarke Power Products, P.O. Box 391, Bowling Green, Ohio 43402; 1-800-227-9603. **Circle No 268**

Golf 2000's yard markers speed up play

Visualize a course with the grass uninterrupted by concrete or asphalt, where play is faster because cart paths follow the fairway and where the yardages are clearly marked.

Golf2000 Corp. of San Diego, Calif., offers two new products which help to speed up play. Their interlocking pavers protect turf and are used to construct cart paths in the fairway. Their 5-by 10-inch yardage markers lie flush with the fairway and are easily visible.

Placed at 10-yard intervals in the center or at the sides of the fairway, the markers allow golfers to quickly determine the yardage, hit fewer misclubbed shots and help realize when it is safe to shoot to an occupied green.

Since golf balls bounce normally off of the pavers and yardage markers they do not materially alter the game.

The pavers and yardage markers do not violate the rules of golf and are covered under USGA Rule 24-2

Contact Golf 2000 Corp., 9842 Hibert St., Suite 257, San Diego, CA 92131; 619-566-6189. **Circle No 341**



Turbo Shredder said 'revolutionary'

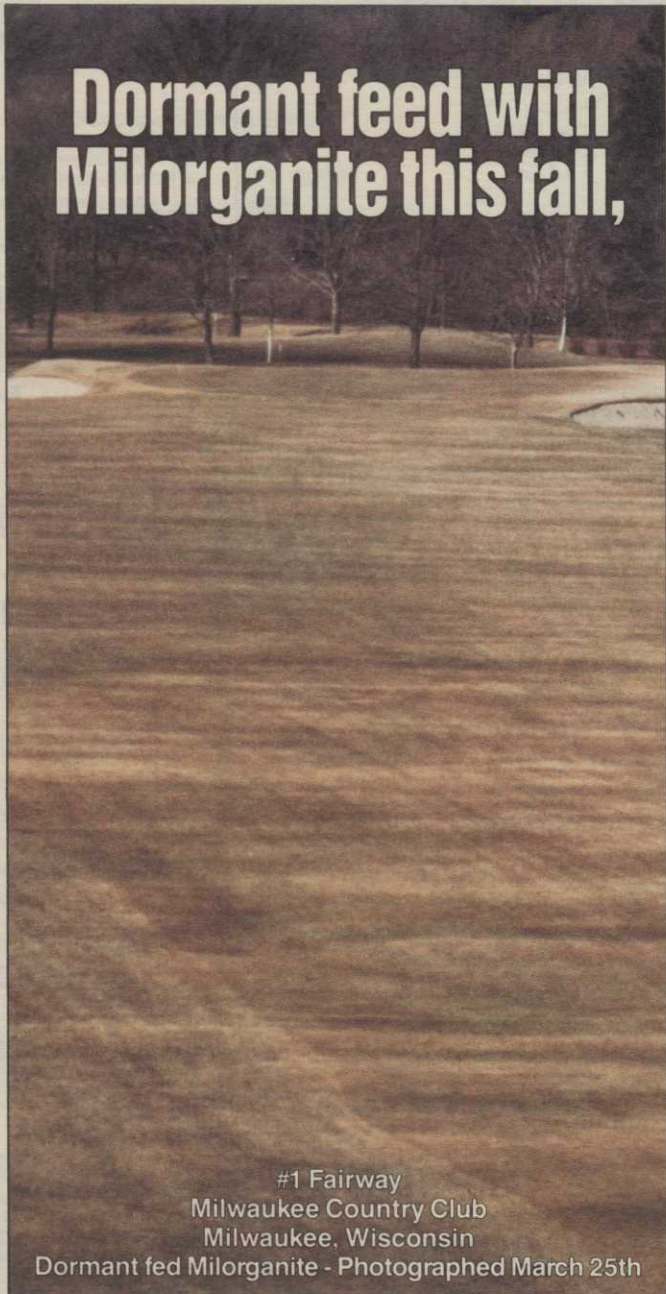
Excel Industries has introduced what it calls a "revolutionary" new Turbo Shredder mower deck that chops grass clippings into fine particles that return to the soil surface easier and faster than is possible with standard mower designs. The shredding action of the Turbo Shredder improves decomposition of the clippings and returns valuable nutrients to the soil.

The eight-blade design of the Turbo Shredder™ eliminates clogging and increases the airflow for better dispersal of clippings. When shredded grass clippings are collected in the eight-bushel BAC-PAC™ grass catcher, less air is trapped in the catcher so the grass is packed more densely.

Development of the Turbo Shredder deck was prompted by the need for an environmentally safe way to dispose of grass clippings without the use of plastic bags.

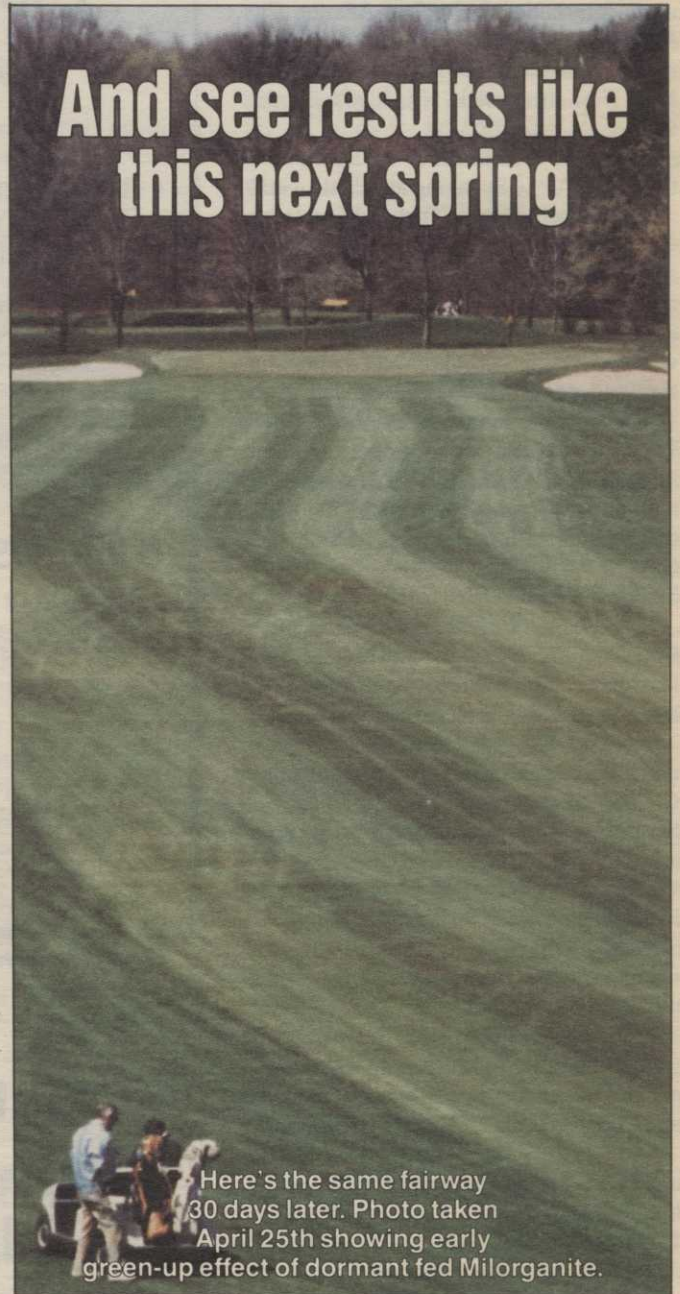
The Turbo Shredder 51-inch deck will be standard on all Hustler 251K models beginning in late July, 1989. The 251K is an 18 hp dual hydrostatic mower that provides the ultimate in maneuverability and true zero radius turning.

For more information contact: Excel Industries, Inc. P.O. Box 7000, Hesston, KS 67062-2097; 1-800-835-3260. **Circle No 319**



Dormant feed with Milorganite this fall,

#1 Fairway
Milwaukee Country Club
Milwaukee, Wisconsin
Dormant fed Milorganite - Photographed March 25th



And see results like this next spring

Here's the same fairway 30 days later. Photo taken April 25th showing early green-up effect of dormant fed Milorganite.

Why Dormant Feed Milorganite?

Reduce Operating Costs

You'll save time and money. Apply Milorganite in late fall for efficient labor and nutrient use. More time is available for you and your staff in late fall, and spring time crunches will be avoided when you dormant feed Milorganite.

The W.I.N. Factor

Dormant applied Milorganite does not burn, leach, or lose its nutritive value due to a 90% Water Insoluble Nitrogen (W.I.N.) factor.

Rich In Chelated Iron

Your turf will look great. Milorganite provides 4% min. iron and a full package of nutrients. That means an early

spring green-up without excessive growth, with the iron content carrying the rich color well into the heat of summer.

FREE LITERATURE

Mail in the coupon below for further information or call 414-225-2222.

- Milorganite's Iron — Technical Bulletin
- Please send other Milorganite Information

NAME _____
 ADDRESS _____
 CITY _____ STATE _____ ZIP _____
 () _____
 PHONE # _____

Mail to: Milorganite • 735 N. Water St. • Milwaukee, WI 53202



America's Number One
Naturally Organic Fertilizer

For free information circle #136