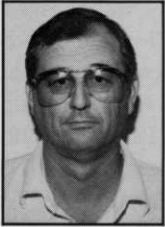
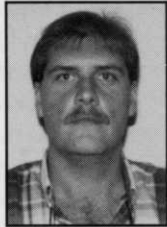


WANTED



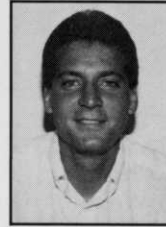
Dick Campbell



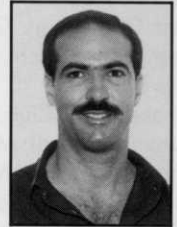
Russ Mitchell



Tom Gaines



Bill Lund



Steve de Mello

OUT OF COMPETITIONS HAIR!

These professionals are guilty of:

- Great Service
- Best Pricing
- Maintaining 4 Service Locations
- Top Products
- Expert Knowledge
- 25 Plus Years of Florida Turf Tradition
- Industry Support

BUT YOU CAN FIND THEM AT:

Dick Campbell, North and Central Florida — (407) 422-2337 Ext. 862 Pager, (407) 247-1727 Mobile

Russ Mitchell, Southeast Florida — (407) 835-5283 Pager, (407) 346-7078 Mobile

Tom Gaines, Dade and Broward Counties — (305) 397-4372 Pager, (800) 432-3411

Bill Lund, Southwest Florida — (813) 883-1724 Pager, (800) 282-2719

Steve de Mello, Tampa Area North — (813) 883-1684 Pager, (800) 282-2719

Woodbury
A TURF TRADITION



Ranch, Lecanto; Bloomingdale Golfers Club, Valrico; Bonita Bay Club, Bonita Springs; Cobblestone CC, Palm City; Emerald Bay, Destin; Hammock Dunes Links, Palm Coast; Ibis G&CC (The Legend), West Palm Beach; Ironhorse CC, West Palm Beach;

Lake Nona Club, Orlando; Lely Resort (Flamingo Island); Magnolia Point, Green Cove Springs; Old Mash GC, North Palm Beach; TPC of Tampa Bay, Tampa; Weston Hills, Fort Lauderdale; Wildcat Run, Estero; Willoughby GC, Stuart.

PGA National to be featured on TV show

PGA National GC in Palm Beach Gardens will be one of the courses featured in the PGA of America's nationally syndicated TV program, PGA's Golf Almanac.

In its third year, the series will expand from 10 to 13 weeks for each of the PGA's 41 sections. The 30-minute shows will air in both Florida sections beginning the weekend of April 4 and ending June 27.



Robert Trent Jones Sr. in oil portrait by Arthur Weaver

USGA honors Robert Trent Jones Sr. with portrait for permanent display in Golf House

An oil portrait of golf architect Robert Trent Jones Sr. by renowned British artist

Arthur Weaver was unveiled during the annual meeting of the United States Golf Association in Palm Beach in February.

"It was an occasion I will always remember," Jones said. "I was simply delighted with Arthur Weaver's work and am honored the USGA will display it."

It was the first of two February honors for the architect. He received the Don Rossi Humanitarian Award from the Golf Course Builders Association of America at the International Golf Course Conference and Show in New Orleans.

Jones's portrait will hang at the USGA's Museum, Golf House, in Far Hills, N.J. He becomes the 17th golf dignitary — and the first golf architect — honored with a portrait. Others include Bob Jones, Francis Ouimet, Ben Hogan, Byron Nelson, Gene Sarazen and Glenna Collett Vare. A selection of Arthur Weaver's landscapes was exhibited at Golf House last summer. The museum is open from 9 to 5 weekdays and 10 to 4 on weekends.

We work at ground level...



so you can play on top!

The fact is, Central Florida Turf is working hard to provide you with superior workmanship in construction of new golf facilities, irrigation with all turf installations or renovation of existing golf courses... and all at a competitive price!

Jeff Harstine
President/Vice President

Rodney Davis
Secretary/Treasurer

Dennis Crews
Sales Manager

Central Florida Turf, Inc.

4516 East Kinsey Road
Avon Park, FL 33825
(813) 452-2215 • 800-422-1187

•TURF TRACER • FOAM GARD • RUST BUSTER • BEAUTY/

GREEN • PENETROL • KICK IN THE GRASS • TURF IRON • SUPER WET • EV R GREEN

ALMAR

Quality
Service
Economy

CHEMICAL CO. INC.

P.O. BOX 18101
TAMPA, FL 33679

**CALL COLLECT:
813-839-3363**

STUART COHEN
EAST FLA.

RUSS VARNEY
WEST FLA.

•KNOCK M' DED • GRIME OFF • GREEN LAPPING SOAP • RUST BAN • GREEN MAGIC

•TURF KOTE • WATER PENN • GREEN MASTER • SCRAM //

ASGCA honors Paul Fullmer with 1992 Donald Ross Award

Paul Fullmer, who has guided the development of the American Society of Golf Course Architects for the past 22 years in his role of executive secretary, has been named the 1992 winner of the organization's Donald Ross Award.

"Paul has been at the helm during one of the most dynamic growth periods in the history of golf course architecture in this country," President Tom Clark explained, "and his steady hand has enabled the society and its members to achieve recognition throughout the world as the premier design source. The Society has experienced rapid growth during the past decade and has become a high-profile member of the Allied Associations of Golf, and we wanted to recognize his consistent counsel and pro-active programs by awarding Paul the Ross Award — the highest honor we can bestow."

Fullmer now joins others including Robert Trent Jones and Geoffrey Garnish as ASGCA recipients of the coveted Ross award. The ASGCA presents the Ross Award annually to someone who has made a significant contribution to the game of golf, and specifically golf course architecture.

Fullmer became ASGCA executive secretary in 1970. His golf connection developed through his wife, Sandra, and her father, Percy Clifford, who was an ASGCA Fellow and one of the



We are dedicated to helping turf grass managers do their jobs more efficiently by striving to provide the best parts and service available

TORO CUSHMAN/RYAN OLATHE

TORO IRRIGATION
GREEN MACHINE
BILLY GOAT
POWER TRIM
FOLEY
MAIBO
OHIO
CROSLY TRAILERS

CUSHMAN INDUSTRIAL
TRENCHMASTER
OTTERBINE
NATIONAL MOWERS
BERNHARD EXPRESS DUAL
CHEM-PRO SPRAYERS
ALLEN HOVER MOWERS
HAMMER RECYCLED PLASTICS

STANDARD
PAR AIDE
BROYHILL
CYCLONE
GANDY
WINDMILL
VICON

SALES MANAGER, Don DeLaney

(407) 333-3600

JACKSONVILLE

1741 Hamilton St. 32210

(904) 387-0516

TERRITORY MANAGERS

Carl Heise
John Higgins
Bob Ward

LAKE MARY

300 Technology Park 32746

(407) 333-3600

TERRITORY MANAGERS

Phil Bradburn
James Griffin



We understand the importance of a good mix.

That's why it's important that you get to know Atlantic FEC. Because we provide a variety of specialty mixes and related products specifically formulated for the South Florida turfgrass industry.

Each turfgrass mix is delivered by Spyder equipped trucks in water-resistant paper or plastic bags. Bulk material is available in either normal size Killebrews or "small door" (24") Killebrews to accommodate your turf spreader. Drop trailers, sulfur coated potash, and new Micro Prill Greenskote, a quality putting green blend, also available.

Call us toll free at 1-800-432-3413 or visit us at 18375 S.W. 260th Street in Homestead to find out how you can benefit from quality mix from the Atlantic FEC turfgrass professionals.

Atlantic FEC

Better Mixes Since 1923.

©1990 Atlantic FEC

leading golf course architects in Mexico.

"Quite simply, I am deeply honored by the Ross Award," Fullmer said.

"I am well aware that staff people seldom are recognized with their organization's highest honor, and this recognition certainly is one of the highlights of my life, especially because it comes from such great friends."

**USGA presents
C. Richard Skogley
Green Section Award**

A turfgrass breeder and educator responsible for several varieties of bentgrass and fescue, including Providence and Jamestown, was presented the USGA's 1992 Green Section Award at the International Golf Course Conference and Show in New Orleans Feb. 10-17.

"I'm very proud to receive the acknowledgement of my peers for my years of research in turfgrass," said Dr. C. Richard Skogley, who has spent most of his 40-year career as director of the Uni-

versity of Rode Island turfgrass program.

The award has been presented annually since 1961 to recognize distinguished service to golf through work with turfgrass.

An author or co-author of many articles for scientific journals and the public press, Skogley has been a featured speaker at turfgrass programs throughout the world.

He has received many honors, including the Oregon Seed Trade Association Man of the Year Award and the GCSAA Distinguished Service Award.

Skogley retired from URI in 1990 but he continues to provide consulting services.

**USGA Foundation
grants funding to
youth golf programs**

A Florida-based program to introduce underprivileged youngsters in 125 cities around the nation to golf has received a grant from the USGA Foundation.

"Hook-a-Kid-on-Golf," run by the National Youth Sports Coaches Association based in West Palm Beach, and the LPGA/American Athletic Foundation Junior Golf Program in Anaheim, Calif., which will teach the game to disadvantaged youths in Southern California.

Both received major funding from the USGA series of grants designed to assist in developing youth and education programs.

Several programs for physically challenged golfers also received support this year, including Special Olympics International; Fore Hope, Inc, of Columbus, Ohio; National Amputee Golf Association, of Amherst, N.H.; and the Physically Limited Golfers Association in Duluth, Minn. Funds for these programs were raised through USGA sales of greeting cards in 1991.

The National Minority Junior Golf Scholarship Association, in Phoenix, Ariz., was awarded a grant to assist with its scholarship program for financially disadvantaged high school golfers.

South Florida Grassing, Inc

"A Leader in the grassing industry since 1964"

419 SOD • 419 SPRIGS

**TIFDWARF * 328 * HYDROMULCHING * WILDFLOWERS
* GRASSING & MULCHING**

DIRECT FROM HOBE SOUND, FLORIDA
South of Stuart

We provide reworking
and planting
services for fairways, tees
and greens.

Certified 419
and Turfgrasses grown
on gassed, irrigated
sand land.

Phone: (407) 746-7816 • (407) 546-4191 • Fax (407) 546-3482

We Supply It, So You Can Work It . . .



FOR PRODUCT KNOWLEDGE, THESE EXPERTS SERVICE YOUR AREA.

David Miller	Central Florida
Jim Sartain	West Coast
Bob Schroeter	North Florida
David Cheesman	Treasure Coast
Shawn Zakany	South Florida
Jim Wells	Central Florida
Tracie Rodwell	Everglades
David Barnes	Ridge
Mike Ayer	West Coast
Marty Griffin	Palm Beach
Mike Miles	Sun Coast
Mel Hallack	Ridge

QUALITY PRODUCTS FOR YOUR GOLF COURSE, ITS MAINTENANCE AND APPEARANCE.

FERTILIZERS AND SOIL AMENDMENTS

Lykes Agri Sales
Ringer Turf Products
Liquid Ag Systems Inc.
Dakota Reed-Sedge Peat

CHEMICALS

Helena Chemical Co./Ag Resources

SEED

Pickseed West Inc./Ag Resources

EQUIPMENT

Club Car Carryall
Ransomes Turf Equipment
Daihatsu Hijet
Florida Sprayers Inc.
Crosley Trailers
Easy Picker Driving Range Vehicles
Douglas Rollers
RedMax Reciprocators
Rainjet Fountains
Windfoil Sprayers

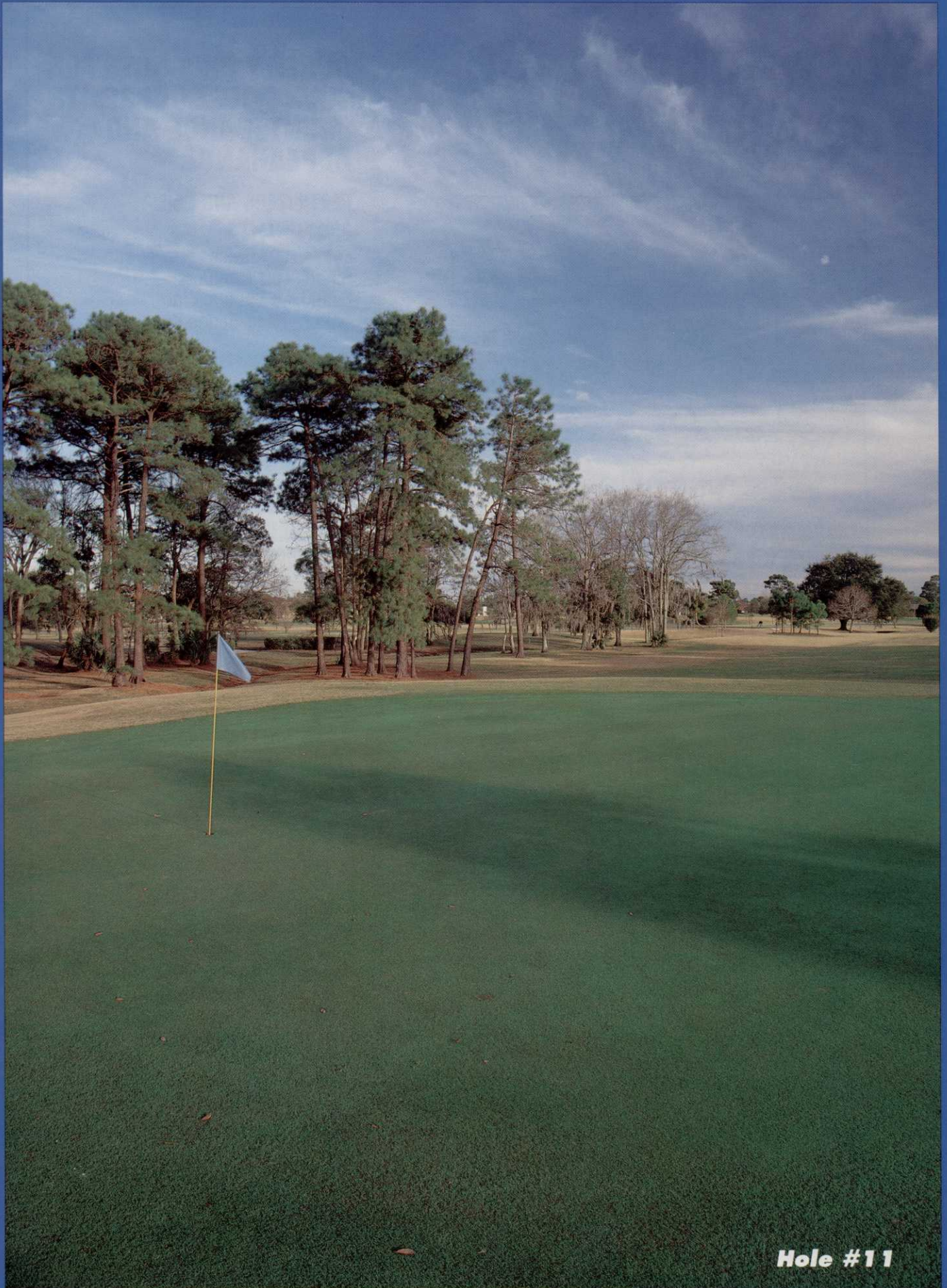
ACCESSORIES

Cylex Granite Signs
Southern Screen and Embroidery Flags
Standard Golf Co.
Lewisline American Eagle
Par Aide Products
FlexStake
Motorola Radius Radios
DNA Sun Helmets
Hammers Recycled Plastics
Fox Valley Marking Paints
Lundrain Drainage Material
Spyker Spreaders
Master of the Links Wood Products
Hole-in-White (Cup Brightener)
Clover Lapping Compound

2582 OLD COMBEE ROAD
LAKELAND, FLORIDA 33805

1-800-330-8874 • (813) 665-5800 • FAX 667-0888

Golf Ventures
a complete line of golf course products



Hole #11



Photos by Brian Everhart

Winter Pines Golf Course

A good, everyday golf course for good, everyday golfers

BY LARRY KIEFFER

Joe Ondo, CGCS, is a working superintendent.

With four full-time employees and three part-timers, he maintains the 18-hole, 5,400-yard Winter Pines Golf Course, a par-67 public facility that gets 90,000 rounds a year. He's a part-time mechanic and sprayer technician, and a full-time member of the crew.

And he wouldn't have it any other way.

"Everybody can't be at the prestigious places," says the 39-year-old Ohio native and 1975 graduate of Lake City Commu-

nity College's School of Golf Course Operations.

"I enjoy not having to be in the office all day. I not only get to see my golf course up close and personal every day, I get the chance to do something about it. You see things when you're riding the sprayer that you wouldn't see while making an inspection tour.

"What we have is a good, everyday golf course for good, everyday golfers."

And Ondo, with a three handicap and several state championships under his belt, is a pretty good everyday golfer himself. He learned to play golf at 15, when a public course, Bronzwood

Golf Club owned by James and Natalie Bronson, was constructed across the street from his Kinsman, Ohio, home.

Kinsman is about 50 miles east of Cleveland and not much further southwest of Erie, Pa., home of the current Winter Pines owners.

After watching the course grow in, Joe and his dad thought golf might be fun. So they walked across the street and tried it. They liked it... and became pretty good at it.

The Bronsons's son, Carl, was Joe's age. Soon the two teenagers were tearing up the local junior tournaments.

After high school, Carl Bronson (now superintendent at East Lake Woodlands GC in Palm Harbor, Fla.) went to Lake City Community College while Ondo entered Youngstown State University on a golf scholarship.

"I thought I knew a lot about math until I started taking engineering courses," Ondo recalls. "I changed my major to physical education."

Although he toyed with the notion of becoming a golf professional, Ondo dismissed the idea because "I didn't have the resources. Sponsors weren't readily available back then."

So he followed his buddy, Carl, to Lake City, and graduated with the class of 1975. He then landed the assistant's job at Sharon (Pa.) CC.

In the fall of 1978, he came to Florida as assistant to John Lapikas at Lost Tree Club in North Palm Beach. Six months later, he took the Winter Pines post. There was an E(e)rie connection.

Lapikas had been superintendent at Winter Pines before moving to posh Lost Tree and the Winter Pines owners were

"seven guys from Erie, Pa.," near Ondo's hometown and the wellspring of Ondo's career in golf.

"It was a different world, that's for sure," said Ondo, comparing Winter Pines to Lost Tree. "Down there, everybody was under scrutiny every moment. Every member was everybody's boss. At Winter Pines, we have only the owner to satisfy."

As a public golf course operated for profit, Winter Pines could not be described as "manicured." But it gets as much tender loving care as the staff and budget will allow.

"It's not a difficult course to maintain," says Ondo "but it takes quite an effort to get everything done before each weekend, particularly when we try to make it at least a little bit better every week. We put in a lot of 10-hour days."

At Winter Pines, as at most public courses, weekends are the source of profits and profits are the source of funds for improvements.

"We pretty much gear up for weekends," Ondo says.

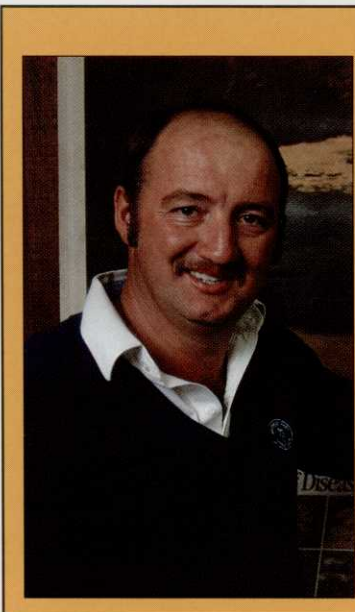
One of the things that helps the profit picture at Winter Pines is free treated sewage effluent from the city of Winter Park.

"It's a good deal for the city because we are getting rid of the effluent at no cost to the city and it's a good

deal for us, too." Ondo says. In the future, the golf course may pay some of the energy costs of treating and pumping the effluent.

At 5,400 yards, the Winter Pines is short, but not as easy as it looks, says Ondo, a former Florida Publinx GA state champion and member of the FGCSA national team several times.

As a concession to maintenance economy and speed of play, Winter Pines has only 21 bunkers, but three lakes and a canal



Joe Ondo, CGCS

Employed as Golf Course Superintendent at Winter Pines Golf Course, Orlando.

Originally from Kinsman, Ohio.

Attended College at Youngstown State University and Lake City Community, Class of 1975.

Previously employed as assistant superintendent at Sharon (Pa.) CC and Lost Tree Club of North Palm Beach.

Earned CGCS designation in 1986.

Married to Kathy, eight years.

Special
**GOLF
COURSE
MIXES**

Sterilization Available



Since 1948

**Florida Silica
Sand Co., Inc.**

Outside Broward/Dade
1-800-330-3521

Dade County
949-3521

Broward County
923-8373

Complete Line Of
**LANDSCAPE
Materials**

**Red Ball
Diamond Clay**

ORTHENE® will keep unwanted pests off your turf.

Trying to control a broad range of tough turf pests like mole crickets, fire ants, fleas, chinch bugs and the worm complex is no day at the beach. That's why you should use ORTHENE.®

ORTHENE kills both on contact and with long-lasting systemic action, and

can be applied to lawns, ornamentals, shrubs, even trees. You can also combine ORTHENE with many miticides and fungicides for more effective pest and disease control with just one application.

ORTHENE is waterproof within 24 hours, and its chemical structure allows it to break down quickly, eliminating the threat of harmful buildup in the soil.

Throw a party your toughest turf pests will never recover from, with ORTHENE Turf, Tree and Ornamental Spray.

ORTHENE® **Turf, Tree & Ornamental Spray**

For safety, always read and follow label directions. © 1992 Valent U.S.A. Corp. All rights reserved. ORTHENE is a registered trademark of Chevron Chemical Co.



THROW A KILLER LAWN PARTY.



bring water into play on 12 holes and a tree-planting program has tightened the course into a challenge. Three par-threes are longer than 200 yards.

"There's not a lot of room out there. You've got to score well on the front side if you want to leave happy," he says.

"Of course, there aren't too many courses where you can shoot 12 over par and still break 80," Ondo adds. "A lot of golfers like that."

If Ondo is a working superintendent at a working man's golf course, he is thoroughly professional, with the complete support of owner Ed McMillin (another resident of Erie, Pa., who bought the course eight years ago) and his son Jon, the course manager and Ondo's boss.

"Every time I have the opportunity to learn something, they are willing to let me. In fact, they encourage me to attend all the seminars and workshops," he says.

In 1986 Ondo was one of the first golf course superintendents in central Florida to become certified. And he has served the FGCSA for years as a director (external vice president of the Central Florida GCSA) and as golf chairman.

Between his professional responsibilities and his passion for golf, there is little time for other recreational activities.

"Weekend golf tournaments are pretty much our vacations," says Ondo, who gets (and takes) three weeks of vacation every year. Taking long walks with Kathy, his wife of eight years, is a major source of relaxation.

"There is not a private club atmosphere here," Ondo says. "And I like that. I like knowing that we're doing the best job we can do and the fact that we are helping all kinds of people—from

kids to senior citizens—enjoy themselves and this great game. "I'm happy."



Continued

AmerAquatic®

TOTAL LAKE CAPABILITY

- algae and aquatic weed control
- fountains, installation & service
- lake & littoral zone design
- fish stocking & breeding
- wetlands establishment
- floating weed barriers
- water quality testing
- silt/turbidity control
- lakescaping™
- free surveys

Serving golf courses and green spaces from Florida to the Carolinas

Your lake's best friend.™

Florida Toll Free (800) 432-1349

Containment Basins for liquid fertilizer/pesticide storage. Statewide delivery. Order today!

We are your direct source for tanks of all sizes, spray guns, nozzles, hose and more. Send today for your free products flyer!



CHEMICAL CONTAINERS, INC.
P.O. Box 1307 Lake Wales, FL 33859
Telephone (813) 638-2117

* Required in Dade and Broward Counties.

