

# The preemergence you want with the fertilizer your turf needs.

**LESCO 20-2-20  
with  
0.95% Ronstar®**

The reputation of Ronstar® speaks for itself. On golf courses, it's the leading pre-emergence for control of **goosegrass**, crabgrass, *Poa annua* and other turf weeds.



LESCO now offers a product that combines the effectiveness of Ronstar with a fertilizer specifically formulated for controlled growth, LESCO 20-2-20 with 0.95% Ronstar.

With an analysis that is designed to increase stress tolerance, this formulation has equal amounts of nitrogen and potassium for optimum turf development.

To keep your course weed-free and looking great, use LESCO fertilizer with Ronstar today.

To order, contact your LESCO sales representative or call **(800) 321-5325**

toll free. In Cleveland, call 333-9250.

**LESCO**

ESTABLISHED 1962

20005 Lake Road  
Rocky River, Ohio 44116

**Fertilizers, Seed, Control  
Products, Equipment, Parts**

Contains Ronstar® Herbicide, a registered trademark of Rhone Poulenc, Inc.

Always read and follow actual label instructions before applying any pesticide product.

**LESCO — The Right Combination for the Professional Turf Manager**





PHOTOS BY KIT BRADSHAW

## South Florida Field Day draws crowd

Members of the South Florida GCSA gathered at Rolling Hills Resort in Fort Lauderdale April 17 for the chapter's fourth annual field day. Dr. Houston Couch of Virginia Tech University (seen right talking to Steve Kuhn of Doral CC) was the featured speaker in the education session. Following a trade show and lunch, everyone gathered outside for equipment demonstrations under working conditions (above).



Now that he's not working full time, Turcotte stays busy playing golf, biking every day, and hitting the ocean for vigorous swims. He and Germaine also travel to Alabama to see their son, Richard, and to Kentucky to see their daughter, Joline, and their families.

But his interest in the industry remains. One of the most satisfying occurrences has been the growth of golf in Florida.

"They say now that Florida is number one in the country in golf courses, but I could see that coming years ago," Turcotte says. "Golf was one of the main tourist attractions in Florida for years, and now it

brings in millions to the state.

"I think that's why it's even more important for our association to be strong, to have knowledgeable professionals who work for the betterment of golf involved in the association. The entire country is looking at what we do here in Florida with golf course design, management and environmental issues."

### **Crowfoot set for Grand Cypress; may move to new Disney course in '92**

The 1991 Crowfoot Open weekend will take place this year on August 3-5. The

event will be again held at the Grand Cypress Golf Club and Villas and will include the FGCSA Summer Board Meeting, the FGCSA Annual Business Meeting, Educational Seminar, Banquet and Tournament.

Next year look for a possible change of venue as the Crowfoot Committee investigates the possibility of holding the event on either the new Tom Fazio or Pete Dye courses nearing completion at Walt Disney World.

Two new resort areas, Dixie Landings and Port Orleans, across the street from the new courses will make this an exciting site for the 1992 event.

## LANTANA PEAT & SOIL

10570 Hagen Ranch Road

Boynton Beach, Fla.

732-4116

1-800-433-5552

STERILIZED SOILS • TOP DRESSING  
TOP SOIL • MULCH • POTTING SOIL

"Keeping Golf Courses Green"





JOEL JACKSON



JOEL JACKSON

Sam Robinson, above, USGA Section Affairs Committee member from Orlando, moderated the morning session. At left, Jim Moore, center, demonstrates the weather service available on ComputerNet to Richard Haas, superintendent at Crescent Oaks CC in Holiday, left, and Tom Trammel, Indian River Colony Club.



JOEL JACKSON

Dr. Bert McCarty of the University of Florida discussed integrated plant management.

## USGA Green Section Conferences sell out

Approximately 300 golf course superintendents, greens committee members and other club officials attended the USGA Green Section Regional Conference sessions in West Palm Beach and Kissimmee.

The Kissimmee conference at Orange Lake CC was sold out, assuring the continuation of future Green Section programs in the Central Florida area, according to Shelley Foy, administrator of the Green Section's Florida Region.

Five sessions filled the morning and three more rounded out the afternoon.

The Kissimmee program March 14, outlined below, varied only slightly from the Palm Beach Gardens presentation two days earlier.

Ron Dodson, president of the Audubon Society of New York, discussed his organization's new "Cooperative Sanctuary for Golf Courses," suggesting ways similar programs could be set up in Florida.

The New York program was the first of its kind and ushered in a new era of cooperation between the Audubon Society and the golf industry.

Other morning topics included maintenance facilities, Steve Brock and Don



JOEL JACKSON

Ron Dodson, president of the Audubon Society of the State of New York, discussed his state society's Cooperative Sanctuary for Golf Courses.





Above from left, Roger Harvie, USGA regional director; Tom Alex, Arnold Palmer Management; and Larry Kamphaus, Walt Disney World. Left, Steve Brock, architect, and Don Raudenbush, vice president of Erwin Construction Associates, discussed maintenance facilities.

Raudenbush, Erwin Construction Associates; pesticide storage, Lee Bloomcamp, Mobay Corporation; water management; Dwight Jenkins, hydrologist with the St. Johns River Water Management District.

Afternoon topics were computer applications in golf course management, Jim Moore, director of the Green Section's Mid-Continent Region; integrated plant management, Dr. Bert McCarty, University of Florida; successful renovation of 18 greens, Cary Lewis, superintendent at Country Club of Orlando, and Brian Silva, architect.

**TURFGRASS QUIZ**

**EARTHQUAKE!** Dean Gump, superintendent at Pasatiempo GC, Santa Cruz, Calif., had the rare experience of having his green aerified by nature. Fortunately, the damage was not too extensive. They filled in the depressions, added sod where needed, and were soon back in play.

Liquid Ag  Systems, inc.

**The Original  
Clear Liquid Fertilizer Company  
For Your Turf Featuring...**

- Flow-sensitive Injection Systems
- Total Concept Service... Delivery, Field Service, and Custom Blend Programs
- New "Micro Green" micro nutrient product line
- Enviro-Safe Containment Systems (state approved)

**Pompano**  
**1-800-432-2249**  
**305-971-0022**

**Call Today!**

**Ft. Myers**  
**813-332-5565**

# Fungicides

*How you apply it can be at least as important as which one you use, says famed researcher*

BY KIT BRADSHAW

**D**o nozzle type, dilution rates, spray patterns, pH and pressure make a difference when applying fungicides?

"You bet'cha," says Dr. Houston Couch, professor of plant pathology at Virginia Polytechnic Institute and State University. Couch, well known for his book, *Diseases of Turfgrass*, was the speaker at the Fourth Annual South Florida Workshop and Exposition in Fort Lauderdale April 17.

For two hours, he discussed a checklist of items necessary for the correct application of fungicides. This checklist is important, he said, because golf course superintendents need to improve the effectiveness of the fungicides they are applying to the nation's golf courses.

"With the IQ of Zippo the chimp, a crescent wrench and a screwdriver, you can double the effectiveness of your fungicide application," Couch said.

Superintendents must optimize the applications of their fungicides because they are faced with increased expectations.

"The Stimpmeter is the worst thing that happened to golf," he said.

"They roll the golf ball and tell the guy on the spot what they want. To get the number right, the superintendent will roll the green to harden it up, back up on the watering and lower the cutting height. But biologically, under these conditions, the grass has a real problem. Along comes a fungus that really sort of likes this world, and all it's got to do is snarl and this grass dies."



*Dr. Houston Couch, pathologist*

The problem is even worse because of South Florida's climatic conditions, he added. "A lot of you are growing grass in a part of the world where the Lord did not mean for that grass to grow. You know that. This is where he created fungus to kill the grass."

In order to fight the fungus problems, Couch recommends several procedures.

## GRANULAR FUNGICIDES

Although he spent a majority of his time discussing spray fungicides, he did delineate his findings on granular fungicides: mow and irrigate the day before application to have the longest possible interval between application and mowing or watering; and apply the fungicide in the morning while the grass is still wet.

*• With the IQ of Zippo the chimp, a crescent wrench and a screwdriver, you can double the effectiveness of your fungicide application. •*

HOUSTON COUCH



## Pesticide research inadequately funded, says Couch

Dr. Houston Couch feels strongly that superintendents should be more visible in their responsible use of pesticides.

"Golf course superintendents should not just talk about what a golf course does for air quality and sound conditioning and all that stuff," he said. "Because after all is said and done, if three or four ducks die on your golf course, I don't care how much sound pollution and air pollution you are controlling, all the public knows is that are some dead ducks out there. And you are in trouble.

"Generally, superintendents come across as using pesticides properly because the law is making them do it. And that's not the case. Superintendents are responsible people. They are trying to do the job right, but the average citizen thinks they spray indiscriminately. It's not done that way."

To offset this public impression, Dr. Couch had some suggestions.

"Superintendents should be putting out materials that show them using pesticides

and fungicides in the right way, without actually saying it. They should show that they are using Spraycheck, for instance, because it allows them to use the materials more effectively.

"They should show how they use a preventive program to cut fungicide use in half.

"They should demonstrate that synergistic combinations can cut fungicide budgets in half and produce better control."

Couch's research has produced valuable information for superintendents 30 years. He is concerned, however, about pesticide research.

"The GCSAA will not provide and grant money to test pesticides. Should they? I think so. Shouldn't they put out grant money to test nozzle size, longevity of control and so on, so that people can use the materials more effectively?

"Everything we deal with has pesticides... even our clothing has it or clothes would

rot off. The question isn't whether we can live without them; it's whether we can live with them properly.

"But do you realize there isn't a place in this country, including my university or the University of Florida that provides any money for this type of work.

"But if golf courses didn't use pesticides, they wouldn't last a year. Then why shouldn't they be sponsoring research to use these things properly?"

Pat Jones of the GCSAA responds, "The GCSAA is not a test organization. We currently give our research support to the USGA/GCSAA turfgrass breeding program. That's our primary area of support. We also support the USGA research which accounts for pesticides after they are used on the ground."

*The opinions expressed by Dr. Couch are entirely his own and do not necessarily reflect those of The Florida Green or the FGCSA. JJ*



## Pike Creek Turf Farms, Inc.

Route 2, Box 376-A • Adel, Georgia 31620  
1-800-232-7453

*Producers of Quality Sod and Sprigs*  
Row Planting

- Tifway - 419
- Meyer Zoysia
- Tifdwarf
- Tifway II
- Tifgreen - 328
- Centipede



"Granular formulations of non-systemic fungicides require two to three times the active ingredient level of spray formulations to produce the same degree of disease control."

The type of carrier makes a tremendous difference in effectiveness. Get test data on the carrier as well as the active ingredient.

Granular formulation should never be used on home lawns or park applications.

#### NOZZLE TYPES

Couch is emphatic about not using flood jet nozzles in fungicide applications.

"The flood jet has the worst of all possible worlds," he said, "with big droplet size and lots of aerosol. The material comes through the nozzle, hits the baffle and goes splat. That's equivalent to putting your thumb over a hose. The only good thing you can do with a flood jet nozzle is to take it to a kiln, have it melted down and make it into a doorstep for your office."

He recommends either the flat fan 8002 or the raindrop type nozzles, RA 10 to RA

15 for fungicide applications. He also says fungicides should be applied with 100 percent overlap and the angle of the nozzle on the floating boom should be set at 45 degrees.

"The Chempro floating boom is the hottest thing you'll ever see. It has two manifolds for putting out the same pressure at each nozzle and will give you uniform application. The boom is in a class by itself."

#### NOZZLE PRESSURE

In Couch's research, nozzle pressure made a significant difference in the effectiveness of the fungicides.

"We used the 8002 nozzles with the right dilution rate of Chipco 26019 to control dollar spot," Couch said. "When we used 10 pounds per square inch, we got 55 percent control. But when we switched to 30-60 pounds, with the same amount of material in the same amount of water, we just about doubled the effectiveness of the fungicide. With Dyrene, the same thing occurred. There was 45 percent control at 10

pounds and nearly 100 percent control at 30 - 60 pounds."

In order to calibrate the correct pressure, Couch recommends gauges on both the tank and the nozzle ends. "You should be using the Spraycheck method to check your pressure when you apply fungicides. This may not seem important unless it's your prize putting green, it's five days before the big tournament, the nights are in the 90s and the humidity is 150 percent, and one part of the boom is killing all the fungus and the other part is killing just some of the fungus. That's when you think about moving up North."

Couch recommends 40-pound pressure for both the flat fan nozzles and the raindrop nozzles.

#### DILUTION RATES

Forget the old rule, primarily based on the use of mercury fungicides, of 5-10 gallons per 1,000 square feet.

Couch recommends Daconil 2787 at one gallon per 1,000 square feet; Dyrene at 1-2

## CUSTOM CONCRETE BORDERS

**Border Cart Paths... Putting Greens... Flower Beds!**



**COLORS**  
&  
**CUSTOMS**

Call for prices  
and  
specifications



**Consulting  
services for  
paving and  
drainage  
problems!**

**Contact  
Dell  
Haverland**

**Haverland Blackrock Corp.**  
**Boynton Beach, Fla.**

Office: 407/369-7994

Fax: 407/369-0535

**Excavating • Cart Paths • Drainage**

## GOLF COURSE RENOVATION

gallons; Bayleton at 2 gallons; Chipco 26019 at 0.5 to 4 gallons; Banner at 2 gallons; and Vorlan at 1-2 gallons.

"Chipco is hard to mess up," he says. "It's not dilution dependent, so if you went from a half gallon to four gallons per 1,000 square feet, you got some control.

"Dyrene, however, can't be used at four gallons because it's been diluted out of existence and with Daconil, it's dilution dependent, so if you drop down or go up to two gallons, there is a drop in effectiveness.

"Bayleton shouldn't be put in at one or three gallons, but at its optimum rate of two gallons. If you change from the optimum dilution rate with Bayleton, you get less control over the fungus and it doesn't last as long."

**IRRIGATION AND RAINFALL**

Irrigation or rainfall shortly after application will affect the fungicide, and usually not for the better.

In his research, Couch used Dyrene,

Rubigan, Bayleton, and Daconil. He applied the materials to the leaves while they were wet, allowed the leaves to dry, then irrigated. After three days, he irrigated again.

As a result, Couch said, "with dollar spot control, rainfall before the spray dries, significantly reduces the effectiveness of the contact type fungicides. With Rubigan, if the leaves are washed before the spray dries, it's goodbye Rubigan. With Bayleton, leaf washing before the spray dries does not significantly reduce the effectiveness."

He also concluded that the basic effectiveness of turfgrass fungicide is established by the initial amount of the water used in its spray application.

If the treated area gets more water before the spray dries on the leaf, the effectiveness of non-systemic fungicides will drop significantly.

If the fungicide formulation contains a sticking agent, rainfall or irrigation immediately after the spray dries on the leaves

will not appreciably reduce its effectiveness.

**pH AND IN-TANK STABILITY**

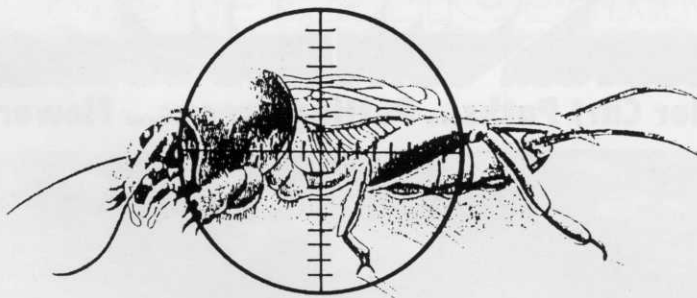
Superintendents need to know the stability of the active ingredient of the fungicide (which usually is supplied by the manufacturer); they need to test for the pH stability of the formulations; and they need to know the pH of the water in the area.

"The lesson here is that if the active ingredient of the product is unstable in alkaline ranges, it will be formulated with a buffer that will skew it toward the acid range," Couch said. "So what you want to find out is if the water you are using will offset what was going on in the first place.

"Dyrene is alkaline sensitive. It loses disease control effectiveness rapidly at 9.5 in the alkaline range. However, if it is used immediately in the acid range it doesn't lose effectiveness."

He recommends using a simple pen-type

**An Un-Welcome Sight!**



**Take Aim With Sunniland  
Molecricket Bait**

**Sunniland  
Regional Managers**



Dennis Varady (407) 332-9078  
Steve Goedereis (407) 964-9478

Wayne Carmichael (904) 272-4891  
Joe Kempeneer (813) 743-2643

Post Office Box 1697, Sanford, Florida 32772-1697 Telephone (407) 322-2421 • 1-800-432-1130



# NEED SOME TREES MOVED?



**WE DO IT ANYWAY YOU WANT  
TREE SPADES, CRANES, BACKHOES, LOADERS  
ROOT PRUNING DONE BY HAND OR MACHINE.**

**WE ALSO SUPPLY AND INSTALL  
LANDSCAPE MATERIAL AND LARGE TREES  
ROYALS, DATES, WASHINGTONIA,  
AND LARGE CANOPY TREES.**

## **TREE MOVERS, INC.**

16313 Military Trail, Delray Beach, FL 33484

**(407) 496-0700**  
Delray Beach

**(305) 491-6250**  
Broward

pH meter to avoid mistakes. The ideal pH for a fungicide formulation is 6.5.

But pH is not the only significant factor. The length of time a fungicide mixture is stored can affect it, even to the point of rendering it useless.

During Couch's tests, the fungicide formulations were adjusted and tested immediately. Then they were stored for 24 hours at 71 degrees, and tested again.

"If Dyrene is allowed to stand for 24 hours, regardless of pH, there is a significant drop in the effectiveness of the fungicide. The same holds true of Daconil 2787. Although it's stable initially from 3.5 to 9.5, if it is allowed to stand for 24 hours, there is a clumping together of the particles and a loss of effectiveness."

Rubigan is stable from 3.5 to 9.5 initially and remains stable from 6.5 to 9.6 after 24 hours. "But," he said, "at 3.5, the material breaks down significantly. It's acid unstable."

**SYNERGISM**

A lot of research still must be done on synergism, a positive reaction that occurs when fungicides are combined to improve their baselines. But some products have already proven to exhibit that characteristic.

For instance, Fore and Subdue or Fore and Banol can be used at half their dilution rates and improve their effectiveness through synergistic action.

For dollar spot control, Couch recommends Banner and Dyrene, Banner and Chipco 26019 or Banner and Bayleton at a quarter of the normal rate.

"Not everything (combination of fungicides) works, but when they do, it can increase the effectiveness of the products," Couch said.

"Good golf course superintendents need more training in pesticides and agricultural chemicals because we are more dependent on chemicals than ever before," said Couch in an interview after his lecture.

"In order to stay alive in their profession, superintendents need to attend the local, state, and national education sessions. The information they receive in these sessions is current. By the time it hits the magazines, it's months old and by the time the material is in a book it is about two years old."

Couch feels superintendents also need education in personal relations.

"One of the reasons they need this training is because of a trend I see as bad: the trend toward having golf course managers or having corporations involved with the golf course.

"This takes away the superintendent's ability to make spot decisions. In some cases, a superintendent may need a product to take care of a problem, but he can't get the money released, or can't get it released in time to apply the material. And as a result, there's a problem on the course.

"Who gets blamed?" Couch asked rhetorically. "The golf course superintendent, and yet it wasn't his fault."



*We are dedicated to helping turf grass managers do their jobs more efficiently by striving to provide the best parts and service available*

DISTRIBUTOR FOR

**TORO CUSHMAN/RYAN OLATHE**

TORO IRRIGATION  
GREEN MACHINE  
BILLY GOAT  
POWER TRIM  
FOLEY  
MAIBO  
OHIO  
CROSLY TRAILERS

CUSHMAN INDUSTRIAL  
TRENCHMASTER  
OTTERBINE  
NATIONAL MOWERS  
BERNHARD EXPRESS DUAL  
CHEM-PRO SPRAYERS  
ALLEN HOVER MOWERS  
HAMMER RECYCLED PLASTICS

STANDARD  
PAR AIDE  
BROYHILL  
CYCLONE  
GANDY  
WINDMILL  
VICON

SALES MANAGER, Don DeLaney  
**(407) 333-3600**

**JACKSONVILLE**

1741 Hamilton St. 32210  
**(904) 387-0516**  
TERRITORY MANAGERS  
Carl Heise  
John Higgins  
Bob Ward

**LAKE MARY**

300 Technology Park 32746  
**(407) 333-3600**  
TERRITORY MANAGERS  
Phil Bradburn  
James Griffin

A Lake is a REFLECTION of its MANAGEMENT

The Lake Doctors 1-800-666-LAKE