

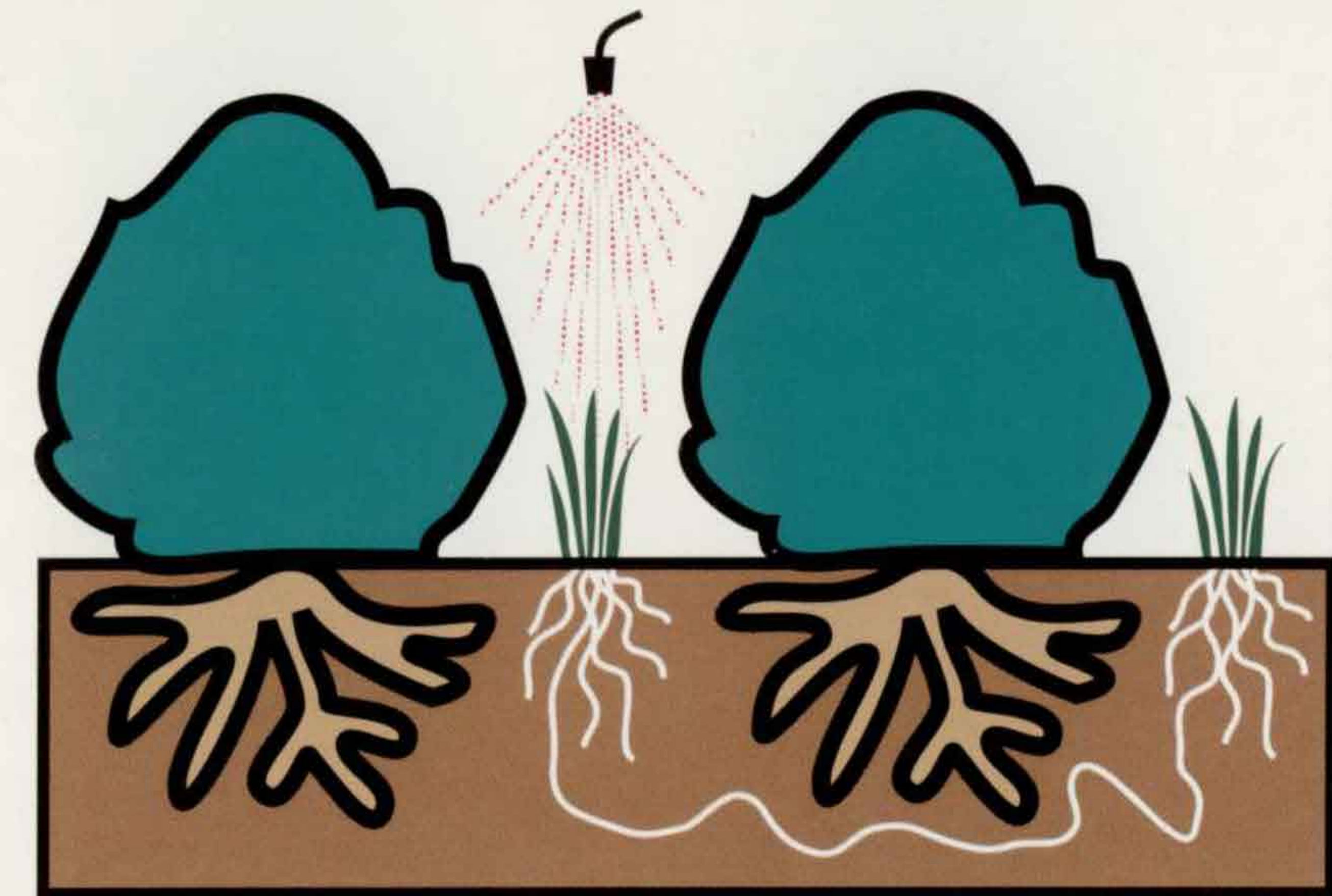
Take-Away™

*Selective, Systemic
Control of Grassy Weeds
in Ornamental Beds*



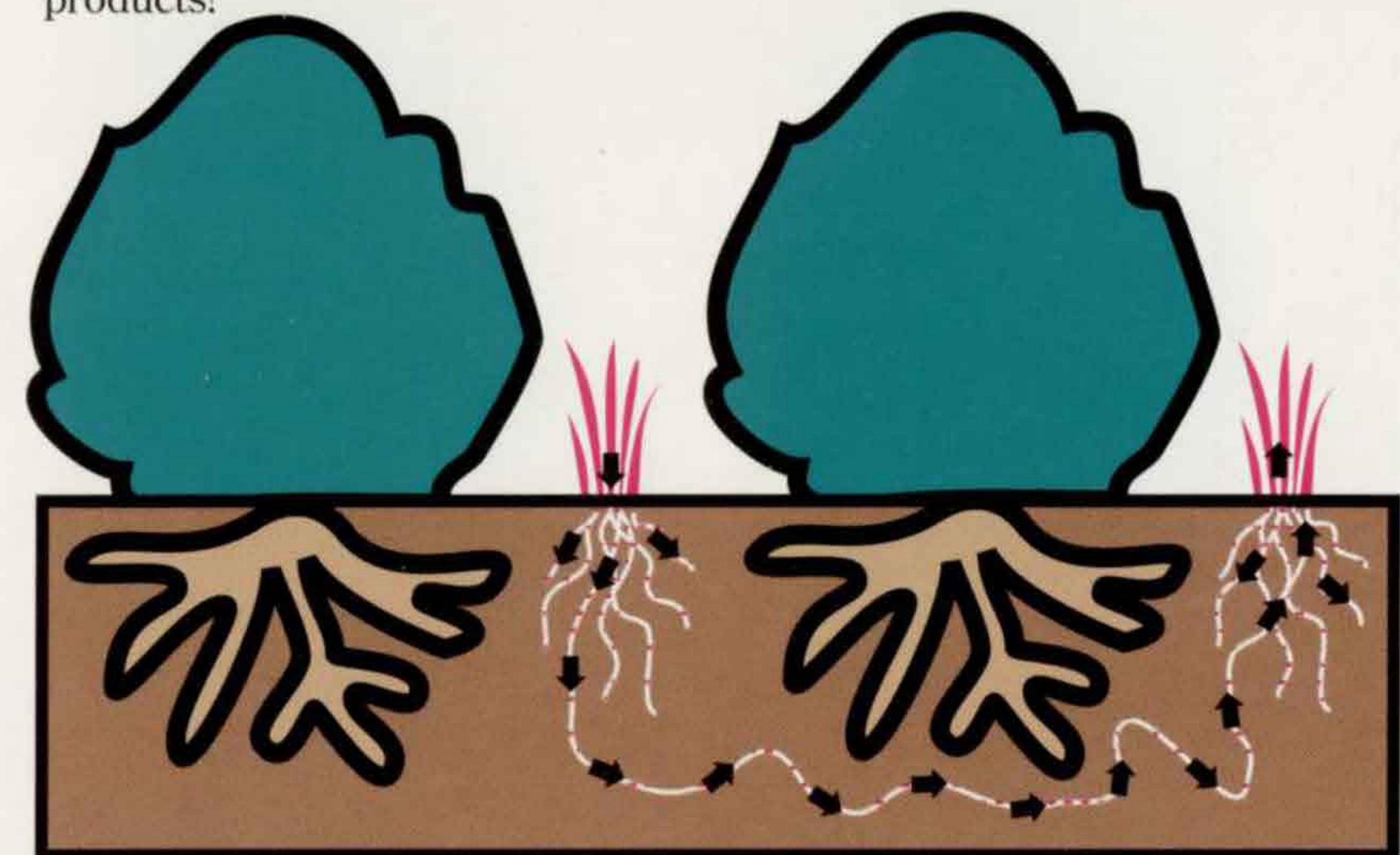
*Take out unsightly
grassy weeds with
LESCO Take-Away™
Postemergence
Herbicide!*

Selective



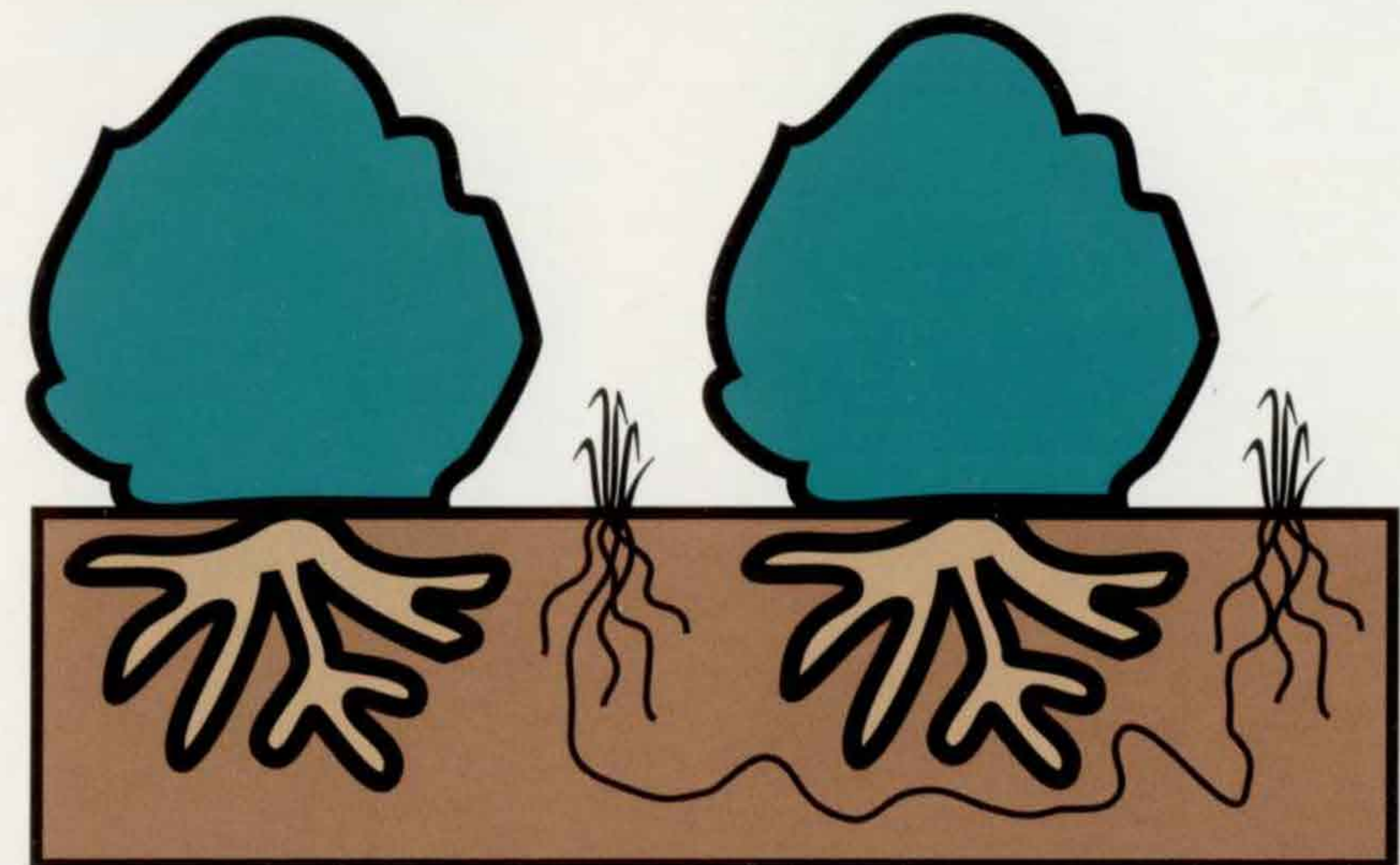
LESCO Take-Away controls over 30 problem annual and perennial grassy weeds. It is labeled for over-the-top application on over 300 species of ornamental plants — that's three times as many ornamentals as competitive products!

Systemic



Take-Away moves quickly from treated foliage to all growing points and destroys the entire grassy weed plant— shoots, roots, rhizomes and stolons. Take-Away is rainfast one hour after application.

Fast Acting



Growth of treated grass virtually ceases within 48 hours after application. Grass will show symptoms of loss of vigor, yellowing or reddening. Death of grass usually occurs within 1-3 weeks, depending on species and environmental conditions.

To Order, contact
your LESCO sales
representative or call
(800)321-5325.

LESCO

ESTABLISHED 1962

2005 Lake Road
Rocky River, Ohio 44116

Fertilizers, Seed, Control
Products, Equipment, Parts

Take away the competition!

Give ornamentals a fighting chance! Grasses compete with ornamentals for moisture, light and nutrients and can also harbor insects and disease-causing organisms. Take-Away removes this threat without injuring desirable plants.

Take-Away controls over 30 annual and perennial grassy weeds including tough-to-control perennial grasses like bermudagrass, torpedograss, quackgrass, johnsongrass, kikuyagrass, guineagrass.

Cut costs!

Take-Away reduces the need for expensive handweeding. It requires only an over-the-top spray application for quick results.

Apply LESCO Take-Away to actively growing grasses before they reach the maximum size and before tillering and/or seedhead formation. Always use a wetting agent like LESCO Spreader Sticker for better adhesion and improved performance. Rainfall or irrigation occurring one hour or more after application will not affect performance.

Refer to label for specific application rate information. Always read and follow label directions when applying any chemical product.



LESCO

Take-AwayTM Grassy Weed Herbicide

Selective Postemergence Herbicide for Use on Ornamentals

**Keep Out of Reach of Children
CAUTION**

See Enclosed Supplemental Label For Complete Precautionary Statements and Application Instructions.

Reg. No. 10182-104-10404
Est. No. 44616-M0-01

CONTENTS: 1 GAL.

Systemic Herbicide for Selective Postemergence Grassy Weed Control in Ornamentals.

ACTIVE INGREDIENT:
Fluazifop-p-butyl
Butyl (R)-2-[4-[[5-(trifluoromethyl)-2-pyridinyloxy]phenoxy]propanoate*.....13.00%
INERT INGREDIENTS.....87.00%
TOTAL.....100.00%

*LESCO Take-Away Grassy Weed Herbicide contains 1 pound (+) isomer (fluazifop-p-butyl) per gallon

Manufactured for:
LESCO, INC.

#019230

20005 Lake Road, P.O. Box 16915 Rocky River, Ohio 44116

LESCO

Take-AwayTM Grassy Weed Herbicide

Selective Postemergence Herbicide for Use on Ornamentals

**Keep Out of Reach of Children
CAUTION**

See Enclosed Supplemental Label For Complete Precautionary Statements and Application Instructions.

EPA Reg. No. 10182-104-10404
EPA Est. No. 44616-M0-01

NET CONTENTS: 16 FL. Oz.

Systemic Herbicide for Selective Postemergence Grassy Weed Control in Ornamentals.

ACTIVE INGREDIENT:
Fluazifop-p-butyl
Butyl (R)-2-[4-[[5-(trifluoromethyl)-2-pyridinyloxy]phenoxy]propanoate*.....13.00%
INERT INGREDIENTS.....87.00%
TOTAL.....100.00%
*LESCO Take-Away Grassy Weed Herbicide contains 1 pound (+) isomer (fluazifop-p-butyl) per gallon

Manufactured for:
LESCO, INC.

#019280

20005 Lake Road, P.O. Box 16915 Rocky River, Ohio 44116

Golf Course Superintendents
New CRUSADE Insecticide
Protects All Your Turf





CRUSADE[®] 5G

Granular Insecticide



ow golf course superintendents have a protective shield against economically-draining pests - new CRUSADE[®] 5G granular insecticide. ♣

Extensively tested by university researchers and golf course superintendents, CRUSADE insecticide consistently delivers superior efficacy. Against a broad spectrum of turf insects, including white grubs, cutworms, mole crickets, sod webworms, and chinch bugs. ♣ CRUSADE is nonphytotoxic, and can be easily applied to both warm and cool season grasses on all areas of the golf course. From tee to green. And its performance is not affected by microbial degradation. ♣ CRUSADE 5G insecticide. Effective, flexible, gentle...on all your turf. For golf course superintendents, it's the only crusade. For turf pests, it's the last crusade. ♣ For more information contact your authorized distributor for CRUSADE, or call ICI Product Information at 1-800-759-2500.



Professional Products
Wilmington, Delaware 19897

CRUSADE[®] 5G

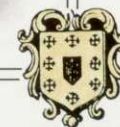
Granular Insecticide

Offered by **LESCO** Contact your sales representative or call 1-800-321-5325

Apply turf chemicals sparingly and according to label directions.

CRUSADE[®] is a trademark of an ICI Group Company.

A business unit of ICI Americas Inc. 05-0517-012





Officers

President Ray Hansen
Del Aire CC
4645 White Cedar Lane
Delray Beach, FL 33445
(407) 495-0536

Vice President Thomas Benefield, CGCS
BallenIsles CC of JDM
10600 Ave of PGA
Palm Beach Gardens, FL 33418
(407) 622-0177

Secy/Treasurer Mark Jarrell, CGCS
Palm Beach National GC
7500 St. Andrews Road
Lake Worth, FL 33467
(407) 965-0046

Past President Joel Jackson, CGCS
Address FGCSA business to:
6780 Tamarind Circle
Orlando, FL 32819
(407) 363-4514

Directors

Treasure Coast Scott Bell
Bent Pine Golf Club
(407) 567-9422

Ridge Buck Buckner
Orange Tree Golf Club
(407) 352-0330

Everglades Lou Conzelmann, CGCS
Fiddlesticks
(813)768-2332

West Coast Frank Cook
Bardmoor Country Club
(813) 392-1234

Palm Beach Paul Crawford
Palm Beach Country Club
(407) 845-2395

Sun Coast Talbot Denny
El Conquistador Country Club
(813) 775-9709

Big Bend Scott Price
Capital City Country Club
(904) 878-2791

South Florida Dale Kuehner, CGCS
Colony West Country Club
(305) 721-5980

Central Florida Joe Ondo, CGCS
Winter Pines Golf Club
(407) 671-1651

Seven Rivers Tim Sever
Sugar Mill Woods Country Club
(904) 382-2100

North Florida Eddie Snipes, CGCS
Oak Bridge Club at Sawgrass
(904) 285-5552

Staff

Secretary Marie Roberts
1760 NW Pine Lake Dr
Stuart, FL 34994
Phone: Days (407) 692-9349

CONTENTS

MAY/JUNE 1991



NEWS ROUNDUP DEDICATED TO A DEDICATED MAN 8
The FGCSA research green was officially dedicated to the memory of Otto Schmeisser in ceremonies that included two of Schmeisser's four daughters.

COVER STORY GETTING IT RIGHT THE FIRST TIME 16
Weston Hills in Fort Lauderdale was architect Bobby Jones' first golf course in Florida. He got it right, says Superintendent Bob Drake.

FGCSA SPOTLIGHT WHO IS AWAY... AND WHAT IS HE PUTTING FOR? 24
Members of the Palm Beach GCSA have earned \$5,200 for research and gained high praise from producers for their work as spotters at nationally televised golf tournaments.

TECH REPORT TECHNIQUE MAKES A DIFFERENCE 35
How you apply fungicides is at least as important as which ones you use, says Dr. Houston Couch, VPI's famed plant pathologist.

ARCHITECTS, ETC. WITH A LITTLE BIT OF MUCK 41
Bobby Jones' recipe for Weston Hills: Smear 1 million cubic yards of muck over 150 acres of limestone, shape it, cover with sand, plant grass, water and stir.

HANDS ON HURRICANE PREPARATIONS 45
Each superintendent should draw up his own specific plan to prepare his course for a big blow, but Dan Jones offers a starting point.

MARK MY WORDS STILL MOSTLY ENVIRONMENTALLY IGNORANT 50
Organized superintendents have done a good job of selling themselves as environmentalists. But not everyone is part of the organization.

GREEN SIDE UP A REQUIEM FOR BENTGRASS 55
Growing bentgrass in Florida year-round can be likened to growing oranges in Pennsylvania. Even if you follow all the rules, you will have some tough days.

RESEARCH REPORT BERMUDAGRASS DECLINE FACT SHEET .. SUPPLEMENT
By special arrangement with the University of Florida's Institute of Food and Agricultural Sciences, the complete four-page IFAS Fact Sheet on bermudagrass decline is reprinted as a pull-out supplement.

The Florida Green

Official Voice of the Florida Golf Course Superintendents Association
Published six times a year : On the first of February, April, June, August, October and December

editor/publisher emeritus Dan Jones, CGCS
Banyan GC
West Palm Beach

editor Joel D. Jackson, CGCS
Walt Disney World
Address Florida Green business to:
6780 Tamarind Circle, Orlando, FL 32819
(407) 351-3729
(407) 363-4514 Fax

publications chairman/assistant editor Tom Benefield, CGCS
Ballenles CC of JDM
10600 Avenue of PGA
Palm Beach Gardens, FL 33418
(407)622-0177

Janlark Communications

Janlark Communications, Inc., publishes The Florida Green on behalf of the Florida Golf Course Superintendents Association, which sets all policies.

publisher Larry Kieffer
copy editor Janetta Kieffer
contributing editor Kit Bradshaw
architecture editor Brad Klein

Resources

photography Brian Everhart
Tradewinds PhotoGraphics
536 Ave. A, NE
Winter Haven, FL 33880
(813) 293-2554

color separations Dimension, Inc.
1507 West Cass St.
Tampa, FL 33606
(813) 251-0244

production film Typesetting Today/Printcrafters
658 Douglas Ave., #1114
Altamonte Springs, FL 32714
(407) 788-7343

printer Rinaldi Printing Co.
4514 Adamo Drive
Tampa, FL 33605
(813) 247-3921

COPYRIGHT NOTICE: Copyright 1991, Janlark Communications, Inc. All rights reserved. May not be reproduced in whole or in part without written permission of the publisher. EXCEPTION: Official publications of all golf course superintendent associations affiliated with the Golf Course Superintendents Association of America are welcome to use any material contained herein provided they give credit and copyright notice.

EXTRA COPIES: Copies of this issue and some back issues are available from Janlark Communications at \$5 each plus shipping. Supplies are limited.

SUBSCRIPTIONS: If you would like to receive a copy of each issue, please contact the FGCSA office for price and policies.

ADVERTISING: For rates and information, contact Janlark Communications, Inc. July/August issue closes June 15; September/October closes August 15.

EDITORIAL: All inquiries should be directed to the editor, Joel Jackson, CGCS. Unsolicited manuscripts and photographs cannot be returned.

JANLARK
COMMUNICATIONS, INC.

P.O. Box 336, Auburndale, FL 33823
813-967-1385 Fax 813-965-1734

Advertiser Index

A. Duda & Sons	29	Lofts Seed, Inc.	54
Almar Chemical Co.	49	Most Dependable Fountains	30
AmerAquatic Inc.	49	National Mower Co.	10
Ametek	56	Nor-Am Chemical Co.	Insert
Aquatic Systems Inc.	29	Nutri-Turf, Inc.	14
Aquatrols Corp. of America	42		
Atlantic FEC Fertilizer & Chemical .	23		
Central Florida Turf	12	Pike Creek Turf Farms	36
Chemical Containers, Inc.	44	Rhone Poulenc	21
Classic Greens Inc.	30		
Delray Stake & Shaving	44	South Florida Grassing	18
Douglas Products	49	Spread-Rite, Inc.	28
		Standard Sand & Silica	13
E.R. Jahna Industries	45	Sunniland Turf Products	38
		Sustane Corp.	28
Florida Silica Sand	48		
Flowtronex International	19	Terracare Products, Inc. Mailing Label	
		TMI Turf Merchants Inside back cover	
Golf Ventures	43	Tom Burrows Turfgrass Service	28
		Total Turf Services	51
Haverland Blackrock Paving	37	Tree Movers, Inc.	39
Hoechst-Roussel Agri Vet Co.	27		
		Valent USA	09
ICI Professional Products	2	Vigoro Industries	06
Lake Doctors	40	Wesco Turf	12
Lantana Peat & Soil	32	Woodbury Chemical Co.	47
Lesco, Inc.	1,31,covers		
Liquid Ag Systems, Inc.	34	Zaun Equipment Co.	15,40

Welcome!

The following companies are advertising in *The Florida Green* for the first time:
Classic Greens Inc. 30

National Mower Co. 10
Total Turf Services

TURFGRASS QUIZ

OM
M
A
S
C
A
R
O
S



Something is terribly wrong with this green in California. A severe soil depression runs the full length of the green. The sod is parted in an irregular fashion. What's your diagnosis?

Answer on Page 34

READ

...the fine print.

Net Weight 61 $\frac{3}{8}$ lbs

CAUTION: PLEASE KEEP OUT OF THE REACH OF CHILDREN. EYE CONTACT WITH CONTENTS MAY CAUSE IRRITATION. FLUSH EYES WITH WATER AS SOON AS POSSIBLE.

ProTurf Fairway Fertilizer 32-3-10 643-8408

Guaranteed Analysis

Total nitrogen (N)	32%
0.8% ammoniacal nitrogen	
24.2% urea, methylene urea, nitrogen	
6.7% water insoluble nitrogen	
Available phosphoric acid (P ₂ O ₅)	9%

Scott's ProTurf

GUARANTEED ANALYSIS

Total Nitrogen (N)	18%
8.5% Water Insoluble Nitrogen	
9% Ammoniacal Nitrogen	
3.5% Urea Nitrogen	
Available Phosphoric Acid (P ₂ O ₅)	5%
Soluble Potash (K ₂ O)	9%
Magnesium (Mg)	10%
Sulfur (S)	8.0%
Iron (Fe)	10%
Manganese (Mn)	0.5%

Nutrient Sources: Urea, Methylene Ureas, Ammonium Phosphate, Ammonium Sulfate, Ammoniated Superphosphate, Sulfate of Potash, Oxides, Ferrous Sulfate, Sulfates.

Potential Acidity Equivalent 1300 lbs. Calcium Carbonate per Ton.

Lebanon Country Club

GUARANTEED ANALYSIS

TOTAL NITROGEN (N)	24.0%
1.6% Ammoniacal Nitrogen	
11.6% Urea Nitrogen	
10.8% Water Insoluble Nitrogen	
AVAILABLE PHOSPHORIC ACID (P ₂ O ₅)	4.0%
SOLUBLE POTASH (K ₂ O)	12.0%
Magnesium (Mg)	0.7%
Sulfur (S)	5.0%
Iron (Fe)	0.4%

Derived from ammonium phosphate, isobutylidene diurea, urea, sulfate of potash, sulfate of potash-magnesia and iron sulfate. Potential Acidity 1000 lbs. Calcium Carbonate Equivalent per ton.

Manufactured by Vigoro Industries, Inc.
Fairview Heights, Illinois 62208.

Par Ex

Down in the analysis area on every fertilizer bag, you'll find the "fine print" that tells you what the big print doesn't. Read all of it. Carefully. But most importantly, look at the percentage of Water Insoluble Nitrogen.

Water Insoluble Nitrogen (WIN)... the key to superior turf.

The higher the WIN percentage, the longer your turf will remain green. And the less often you will have to fertilize. That's because WIN is the percentage of total Nitrogen that is truly slow release. Freeing small amounts of Nitrogen each time it's touched by water (Par Ex® with IBDU®) or activated by temperature or bacterial action (competitive products).

No competitor can deliver as much usable WIN as Par Ex.

Only Par Ex contains IBDU—a unique Water Insoluble Nitrogen source that is 100% available to your turf in a single growing season. Consider that urea formaldehyde products (bacteria and temperature released) contain about one third of their WIN in the form of plastic polymers. Its long-term Nitrogen

release is so slow, it's almost useless, and will most likely occur during the hottest periods, just when you don't want it.

For Sulfur Coated Urea (SCU), research has shown that by the time it is spread, about 50% is immediately soluble, effectively doubling your cost of controlled-release Nitrogen and cutting the benefit in half!

Be sure to read your bag.

If the percentage of Water Insoluble Nitrogen isn't listed, there isn't any slow-release Nitrogen. If it is listed, chances are it won't be as high as the WIN percentage in Par Ex. Even if it is, we guarantee you that 100% of what we list as WIN is available to your turf every growing season. That means for every six months of growing, you'll receive an additional 46-53% more usable WIN than our competitors can deliver.

So start building your WIN percentage today. Talk to your local Par Ex Representative or call 813/294-2567. And get all the WIN you've been reading about.



par ex
THE EX STANDS FOR EXCELLENCE

Research green dedicated to a very dedicated man

It was an honor to dedicate the FGCSA Research Green at the Fort Lauderdale IFAS Research Center to the memory of Otto Schmeisser.

The event was made even more enjoyable because two of Otto's four daughters, Karen and Kris, were able to attend the ceremony. Otto was an integral part of the Palm Beach and South Florida chapters with over 30 years of service in three separate south Florida golf courses — Indian Creek GC, Gulf Stream GC and Everglades GC. He was well respected by his peers and a very likeable person.

I would like to quote the following from Kris Schmeisser: "The green was so impressive in size and structure that we are sure a tremendous amount of valuable research will be conducted at the site. He (Otto) would be very proud to be associated with this endeavor."

I would like to take this opportunity to thank everyone who has been associated with the planning and construction of this project and especially the following companies who contributed directly to the construction of the green:



Ray Hansen
FGCSA President

American Peat & Soil
Estech, Inc.

Lantana Peat & Soil
Bilberry & Associates
Florida Rock & Sand

Pifer, Inc.

Boynton Pump

Golf Ventures

South Florida Grassing

Central Florida Turf

Hector Turf

Swiftline Trucking

D & K Sprinkler

I.F.A.S.

W. W. Googe Trucking

DeBra Turf

ISS Landscape Mgmt.

Williams Pump Service

TURF NEWS

ROUNDUP

FGCSA research green dedicated to memory of Otto Schmeisser

The IFAS Field Day March 28 was the perfect setting for the dedication of FGCSA's Otto Schmeisser Research Green.

As over 500 attendees were guided in groups around the research plots, Dr. Monica Elliott gave each group a history of the green and its intended purpose, which is to provide a field research laboratory that simulates a golf course putting green.

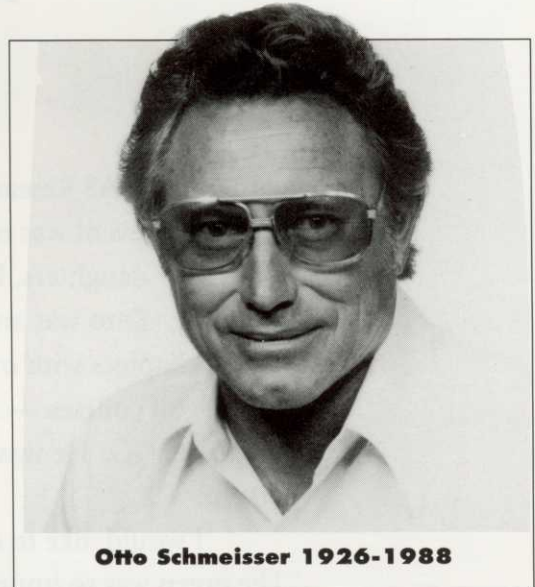
Research on the green will include evaluation of products and the effects of current management practices on the environment; and the development of new management practices.

She detailed the FGCSA's involvement in building the green and its support for the research station.

Meanwhile, Dr. John Cisar explained the first USGA-funded research that he was conducting on leachate studies on a USGA Spec Green.

At the conclusion of the tour of the test plots, the field day attendees gathered at the Otto Schmeisser Research Green as FGCSA President Ray Hansen opened the dedication ceremonies.

Paul Crawford, a member of the FGCSA Research



Otto Schmeisser 1926-1988

Committee and friend of the Schmeisser family, outlined Otto's career as a golf course superintendent. Schmeisser's two oldest daughters, Karen and Kris, represented the Schmeisser family and thanked the FGCSA for the honor bestowed on their late father.

Otto Schmeisser was a golf course superintendent from the Old Tom Morris mold: a professional with

ALSO

Florida Legislature approves \$350,000 matching funds to build Envirotron ... 11

Pioneer Florida golf architect Mark Mahannah dies ... 12

Gov. Lawton Chiles considers a new version of the just-defeated water tax that could cost each golf course \$30,000 annually 14

Alabama state employees invest retirement funds in golf course development 15



MIKE BAILEY

Gathered around the monument, from left, Mark Jarrell, CGCS, FGCSA secretary/treasurer; Kris Schmeisser; Paul Crawford, FGCSA research committee; Karen Schmeisser; Ray Hansen, FGCSA president; Kevin Downing, CGCS, FGCSA research committee.

a strong work ethic learned from his horticulturist father, Hans.

Otto was a creative, curious man who created a lifestyle out of his profession as he and wife Trudy raised their four daughters — Karen, Kris, Kim, and Katy. The family always lived on the golf courses where Otto was employed. That included tenures at Normandy Shores G.C., the Gulfstream Club, Indian Creek G.C., and the Everglades Country Club.

Karen and Kris recalled the wonderful, unique years of growing up with golf courses as their backyards. They feel quite at home whenever they visit golf courses, because those visits bring back happy memories of riding the golf courses in the evenings with their dad.

The sisters did admit that at the time they did not really appreciate the complexity of Otto's work. It was not until much later that they were aware of the demands that managing a golf course placed on their father.

All of the daughters have been associated with the turf industry in some way over the years. The common thread has been selling turf supplies.

However, only Kris and Katy are still involved to varying degrees. Kris is the publisher of the Georgia GCSA's magazine, *Through The Green*, and she works with the Mike Young Golf Course Design company in Georgia.

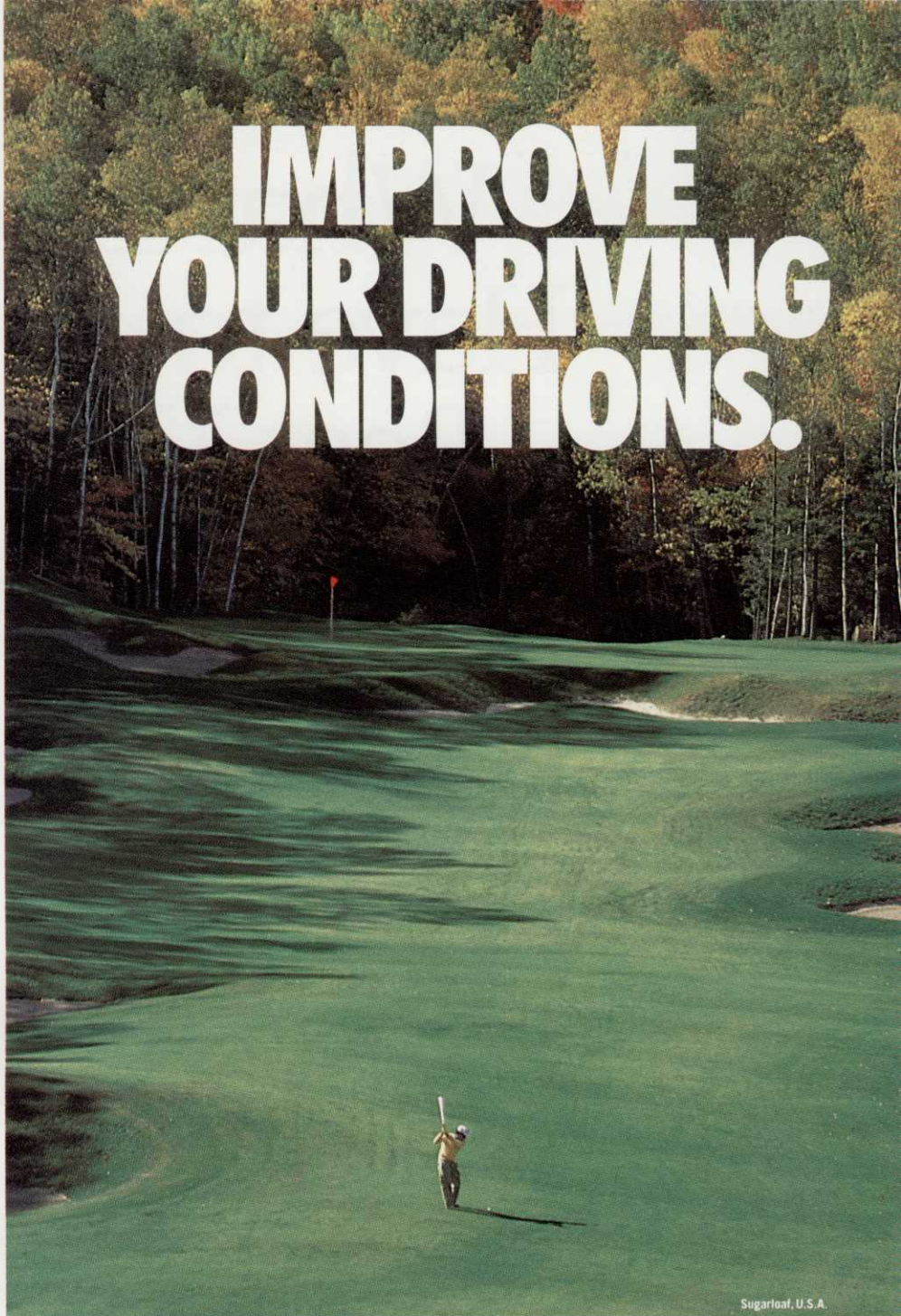
Katy is a landscape architect, managing a horse farm near Athens, Ga., with her mother, Trudy, while working on her masters degree in agronomy. Currently, Karen and Kim are busy raising families in Cocoa Beach and Germany.

Otto Schmeisser was one of the pioneering founders of the FGCSA. He was the prototype professional superintendent. The FGCSA is proud to dedicate the new research green in his memory.

Basic genetic research wins \$4,000 Musser grant for Tennessee doctoral student

Developing techniques to transfer desirable traits from one plant to another has earned a \$4,000 scholarship for a 26-year-old doctoral candidate at the University of Tennessee in Knoxville.

IMPROVE YOUR DRIVING CONDITIONS.



Sugarloaf, U.S.A.

ORTHENE® Turf, Tree & Ornamental Spray keeps pests out of your club.

Stop pests from playing a round on your course with ORTHENE Turf, Tree & Ornamental Spray. One treatment provides a broad spectrum of protection for turf as well as a wide variety of trees and ornamentals.

ORTHENE kills quickly on contact, then by systemic action. So you'll keep hard-to-kill pests like mole crickets, armyworms and leafhoppers under

control. ORTHENE supplies long-lasting residual action against other insects including tent caterpillars, aphids and thrips.

ORTHENE Turf, Tree & Ornamental Spray. It's more than enough to drive unwanted pests right off your course.

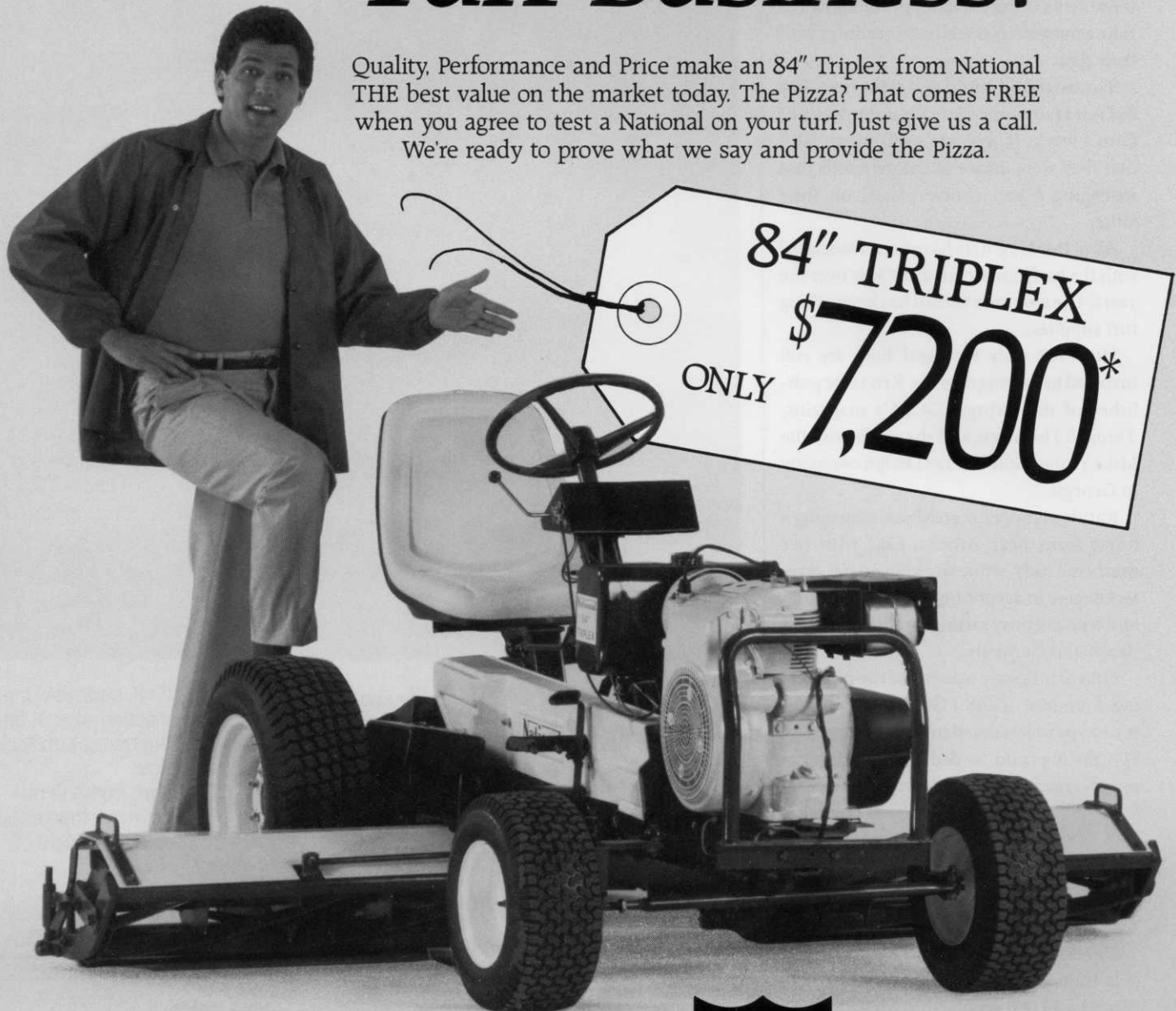
ORTHENE® Turf, Tree & Ornamental Spray

Avoid accidents. For safety, read the entire label including precautions. Use all chemicals only as directed. Copyright © 1990 Valent U.S.A. Corporation. All rights reserved. ORTHENE is a registered trademark of Chevron Chemical Co.



What Does Pizza Have to do with the Best Value in the Turf Business?

Quality, Performance and Price make an 84" Triplex from National THE best value on the market today. The Pizza? That comes FREE when you agree to test a National on your turf. Just give us a call. We're ready to prove what we say and provide the Pizza.



*Does not include sales tax, freight, or dealer prep; suggested price in U.S. dollars. Price may vary with dealer and region.



®

NATIONAL MOWER COMPANY
700 Raymond Avenue
St. Paul, Minnesota 55114
(612) 646-4079