



**WE PACK A FULL SEASON
OF WORRY-FREE WEED
CONTROL INTO EVERY BAG.**

Only CHIPCO® RONSTAR® herbicide gives you safe, season-long control of crabgrass, goosegrass and tough broadleaf weeds.

Like most turf professionals, you want a herbicide that works the first time, every time. One that controls crabgrass, goosegrass and tough broadleaf weeds all season long...without damaging your turf.

But there's only one place you'll find that kind of control. Inside every bag of CHIPCO RONSTAR herbicide.

A single application of CHIPCO RONSTAR herbicide delivers the longest-lasting, most dependable pre-emergence control of crabgrass and goosegrass you can buy. In addition, CHIPCO RONSTAR herbicide keeps oxalis, carpetweed and many other broadleaves out of sight and out of mind.

Unlike most turf herbicides, CHIPCO RONSTAR herbicide controls weeds without harming turfgrasses. In fact, tests prove that CHIPCO RONSTAR herbicide will not cause the root pruning problems associated with other products.

CHIPCO RONSTAR herbicide can also be used near trees, ornamentals and ground covers without fear of damaging sensitive varieties. And, CHIPCO RONSTAR herbicide won't leach or move laterally like some other herbicides.

When it's time to plan your weed control program, remember the herbicide that has everything you need in one bag. CHIPCO RONSTAR G herbicide or new CHIPCO RONSTAR WP herbicide.

Rhone-Poulenc Ag Company, CHIPCO Department, P.O. Box 12014, Research Triangle Park, NC 27709.



**CHIPCO®
RONSTAR®**
HERBICIDE

 RHÔNE-POULENC AG COMPANY

Please read label carefully and use only as directed.
CHIPCO® and RONSTAR® are registered trademarks of Rhone-Poulenc.

(continued from page 80)

reflecting the “spotty” soil conditions underlying. In short, all of these factors mean that turf soils are more difficult to manage!

Where do we go from here? Good turf managers have learned the vital importance of proper soil conditions to the success of grass production and maintenance. Therefore, the problem is simple. By carefully studying and evaluating the soils you inherit, you can then go about an intelligent soil management program. For intensively managed turf areas (such as putting greens, tees, athletic fields, etc.) you may need to improve that inherited “dirt pile” by the use of soil amendments. We know generally, for example, that heavy, mucky soils can be improved by the addition of coarse sands; or that infertile, ball bearing sands may become more productive by the addition of heavier soil fractions like clay or organic matter such as peat.

SOIL AMENDED TO IMPROVE PHYSICAL CONDITION

But just a minute! What really are we doing when we add the above soil amendments (and many others — natural processed or manufactured)? First and most importantly, we are changing the physical condition of the soil.

The management of turf facilities imposes unique and damaging requirements on the turf. Heavy traffic, continuous wear, regular movement of maintenance equipment, high rates of irrigation — all these factors work to destroy soil structure. Thus, turf soils must be constructed (remember — no more natural soil, so we must construct a usable soil base from that inherited “dirt pile”) to take the punishment and still grow good turf.

Here is where the soil amendments come in — to change the inherited soil to a more desirable physical condition. Briefly, to produce good turf under our demanding conditions, soils must have proper pore space. There must be pores to move water through the soil and pores to move air so the grass can “breathe”. Approximately half of the soil is made up of solids (the mineral matter plus a small amount of organic matter). The other half is pore space.

Pore space is of two kinds — large (macro) pores and small (micro) pores. Air moves into the soil (and harmful gases move out) through the large pores, except after a heavy rain or irrigation. Then they may be filled with water temporarily, which soon drains out. This is the ventilation system which aerates the soil. The large pores should comprise about half of the total pore space.

Small pores (also called capillary pores) move water through the soil. These pores conduct water to the grass roots (not the opposite — roots don’t “grow to water” — water must be there first), from the water table, like a kerosene “hurricane” lamp moves kerosene up through the wick. The finer the pores, the farther the water will move, and the slower.

PROPER BALANCE OF LARGE AND SMALL PORES

The most important aspect of soil porosity is the proper balance between the large and the small types of pores. An excessive proportion of large pores will result in a well aerated but dry soil (like most of our sandy soils). Water will move through (percolate) too rapidly and very little will be retained to grow turf. An excessive proportion of fine pores, on the other hand, will exclude air and may be waterlogged (like heavy clay soils).

Thus, once we have determined our given soil situation, and knowing the physical requirements of our turf facility (percolation rates, drainage, etc.), we can then amend the soil to meet our requirements. A great variety of soil materials are available to do this including calcined clay, vermiculite, peat, colloidal phosphate, sand, etc.).

If we are fortunate enough to take over the turf facility prior to planting, we have a golden opportunity to shape our future soil condition. If we inherit an established facility, the job is more difficult, expensive and time consuming. It can be done gradually, however, by periodically working proper amendments into the soil as topdressing following soil aeration.

The proper proportion of amendments can be determined by a soil testing procedure known as “mechanical analysis”. Many soil testing laboratories and industrial firms can provide these tests, and will help you compound or construct a soil to meet your needs based on such factors as percolation rates, etc.

Once you have amended your soil to a proper physical condition, then the previously mentioned secondary symptoms such as compaction, weeds, restricted roots, etc., will be minimized. Then turf maintenance will be a more enjoyable and successful business. ■

WHAT’S YOUR EXCUSE?

HUNDREDS of policemen entered a contest to find “America’s most creative excuse for speeding.” Among the entries were:

“My car is so light that the wind blew it over the speed limit.”

“I was speeding to get away from my mother-in-law.”

A woman claimed she was speeding to keep up with the cars behind her.

A man said he had a “right to speed” while making up for time lost in a construction zone.

Another man was speeding after being detained at a farewell party, where speakers included a lot of stuttering children.

Still another man was speeding because he was furious that his wife had just received a ticket for speeding. (This one incidentally won the contest.)

“I have to go to the bathroom.” was the most common excuse.

"I Believe the Best One-Word Description of Gator is 'Great.'"



Fred Tucker, Superintendent
U.S. Homes Timber Pines
Retirement Community
Spring Hill, Florida

Fred Tucker is one of a growing group of Superintendents who knows he can rely on Gator turf-type perennial ryegrass to be dark green, cold tolerant, and have improved density as well as a low-growth habit.

While in every sense a premium ryegrass, Gator has an unusual background. It was developed by hybridizing dark green, heat tolerant premium varieties such as Derby and Regal with the denser, lower-growing European turf-type ryegrasses.

That's why Gator consistently produces leafy, medium-fine, dense, low-growing turf which performs well in full sun or medium shade and persists when cut at 3/16ths inch even during unusual cold spells.

Gator also has excellent wear tolerance and will blend beautifully with other quality ryegrasses.



TURF-GRASS SUPPLIES

107 W. PINE ST. P. O. BOX 807
LAKELAND, FLORIDA 33802
(813) 682-8153 W. A. T. S. 1-800-282-8007



For the long run.



Introducing a powerful new force in riding rotary mowers.

Now there's more to Cushman Front Line® Mowers than top cutting performance. More power. More operator comfort. More endurance.

Now there's the new diesel-powered Cushman model 807.

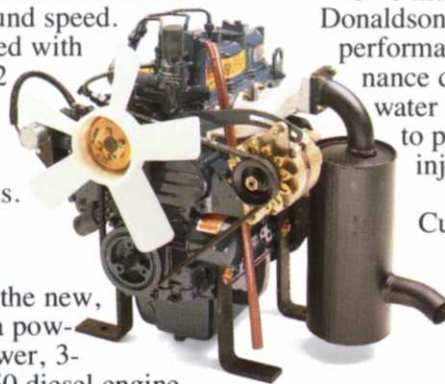
Its totally integrated power train and new hydraulically-powered steering gives you unmatched performance over the long run. The 807 dispatches thick, wet grass on

tricky maneuvers around obstacles without losing ground speed.

It's factory-equipped with wide 23 x 10.50-12 tires to accommodate any accessory without major modifications.

Precision Performance.

At the heart of the new, four-wheel 807 is a powerful 21.5 horsepower, 3-cylinder Kubota 950 diesel engine.



We've included a heavy-duty Donaldson air cleaner to keep performance up and maintenance down. A Stanadyne water separator fuel filter to protect injectors and injection pumps. And a new heavy-duty Cushman PTO clutch to keep your new Cushman Front Line running longer.



As with all Cushman Gas and Diesel Front Line Mowers, the 807 features a durable 60- or 72-inch side or rear discharge mower deck that leaves no grass uncut. The under-deck baffle design produces a positive lift and free flow of air for the industry's most uniform discharge of clippings.

No other rotary mower gives you a cleaner cut.

A complete family of Cushman Front Lines and a wide range of accessories are available to meet all your needs. Choose a 3 or 4 wheel design. Add the exclusive Cushman Grass Caddy™ system, which lets you cut, catch, and hydraulically dump 16 bushels of clippings without leaving the seat. Shut out the

elements with a weather-tight cab.

Or keep your Front Line working all year with a Snow Thrower, Snow Blade, Tine Rake, Flail Mower, Leaf Blower, or Rotary Broom.

In the long run the Cushman Front Line is a cut above the rest. For a convincing demonstration contact your Cushman dealer today. Or call toll-free: 1-800-228-4444.

CUSHMAN[®]
BUILT TO LAST

3332 Cushman, OMC-Lincoln, P.O. Box 82409, Lincoln, NE 68501

© Outboard Marine Corporation, 1987. All rights reserved.

President's Message



As the new President of the Florida Golf Course Superintendents' Association, I welcome the distinct pleasure of addressing my colleagues through this message. Please accept my comments constructively, not critically.

Undoubtedly the results of a whipping can be considered controversial. Many times in a horse race the jockey is accused of using the whip too much or too little. I trust you can stand one more exhortation on the need to join an organization and possibly transform the power of that whip from a device of punishment to one of attention and identification.

I am not a true believer in becoming part of an organization just to be another name on the roster, but we are playing an important numbers game. Without a doubt, the legislature, manufacturers, environmentalists, or any controlling or regulatory group will listen to 1,000 voices more intently than 10. The performance has been chosen, the stage has been set, now it is time for the cast to act — you and I individually and collectively. It is up to ALL of us to join forces — stand up and be counted. You supposedly have chosen the turf industry for good reasons. Now support it. Become an active part of your livelihood. Invest in your present and future.

Join your local Superintendents' Association and expose yourself to "grass roots" education — what is being done in your backyard. As part of the state association you contribute, through numbers, to the sting of the whip. Lend a "Big Brother" hand to the turf industry at large by joining forces through the Florida Turf Grass Association. And as a member of G.C.S.A.A. you collectively impart support to and have an impact on Federal decisions concerning matters which effect our environmentally oriented business.

I believe all of us can afford the dues even, if necessary, out of own pocket. Perhaps it is difficult to see or feel a direct "in the hand" benefit of these investments — but they are worthwhile and your future depends on your present action.

You are important. We need you even if you think you don't need us. Become an active member of the mentioned associations.

Bill Wagner

All Spray Pattern Indicators Are Not Created Equal.



“I’ve just put my finger on the difference between Blazon[®] and the dyes being sold for spray pattern identification. Can you guess which finger?”

Blazon[®] is the only **NON-STAINING** and **INERT** spray pattern indicator in the world.

Your spray pattern indicator should be the least of your worries.

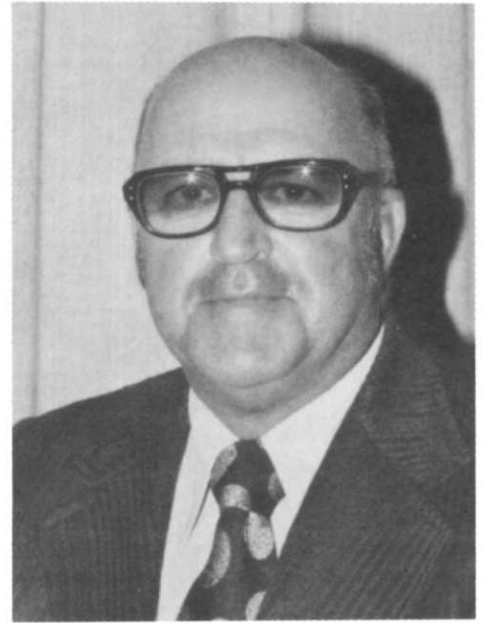
*Blazon[®] will not stain.

*Blazon[®] will not interfere with your pesticides.

There are many imitations, but only one original ... Blazon[®] by Milliken Chemical.



President's Message



Communication — the act of passing along; transferring; a giving of information by talking, writing, etc.

The failure to communicate properly, or even more simply, the lack of good communication is probably one of the biggest creators of, or contributors to, problems which we all face every day.

Were the instructions given to the crew explicit enough to make them aware of the need to do a certain job in a specific manner?

Do the members of your club know that you will be aerifying the greens next week?

Did we get all of the facts pertaining to an issue or a decision that was made by others with which we disagreed before we arrived at our conclusion or were critical of that resolution?

Did we prejudge someone's guilt because we were not privy to all of the facts?

Did the citizen voice an unpopular condemnation of golf course irrigation practices simply because he was not informed of the unique demands of our circumstances?

Did the instructions mean we should turn left or right at the junction?

Did the teacher's homework assignment include the entire chapter?

Do we know why the bomb was dropped?

One could go on and on with example after example, from the ridiculous to the sublime, of situations which develop needlessly simply because we fail to communicate properly. Either we do not get our point across or we flunk the test by not grasping the essence of the information presented to us.

Recently I had the pleasure of attending a meeting comprised of golf course superintendents, a distributor's representatives, and a major manufacturer's representatives at which the dialogue was one on one and dealt with the present and future needs of our industry. This was excellent communication performed in an atmosphere of mutual respect and open minded consideration of each other. All three parties contributed and all three parties received. Communication at its finest — more of this is needed.

There can be no mutual understanding without communication between people. This is a challenge we must all strive to conquer. Certainly, above and beyond our daily routine, the contributing to and the absorbing of the wealth of information in this publication is a good place to start.

Bill Wagner

Cut With The Best.

*John Deere and Neff
Machinery, your support team
that stands above the rest.*

*With Neff, you get more than the
best grounds care equipment.
You get a team of professionals
at each of our 4 branches
dedicated to keeping your
John Deere equipment where
it's supposed to be – on the
turf working efficiently sunup
to sundown.*

*Cut with the best, and Neff
will take care of the rest!*



MIAMI
4343 N.W. 76th Ave. (305) 592-5470
WEST PALM BEACH
3933 Beeline Hwy. (305) 848-6618
ORLANDO
4333 John Young Hwy. (305) 299-1212
FT. MYERS
2995 Hanson St. (813) 334-3627



**Sales and
Service**



President's Message

Most times the subject matter for this message is difficult to come by simply because choosing the right topic is problematical. What do you say that will hold everyone's interest? What do you say that will be informative — enlightening — worthy of one's time? Today the problem is reversed — the issues are too numerous to cover properly but they are issues of such consequence that none can wait. So sit back and relax and read on — you may not like every word but, I encourage you to persist.

First and foremost, of course, is the election of John Hayden, CGCS, as a G.C.S.A.A. Director. For those who have not heard, John won with the highest number of votes ever recorded by a first time candidate. Congratulations to John, Chip Powell (John's campaign manager) and all those who helped in the action. We can feel assured that we will be represented.

Our golf team again performed as has come to be expected as they carried off the championship. Congratulations to Fred Klauk, Bill Whitaker, Dan Meyers, and Ron Hill. Not only do these gentlemen play the game of golf well, but they also serve as excellent ambassadors for our State.

Plaudits must also go to Fred Klauk and his committee which assisted in organizing and conducting the G.C.S.A.A. golf tournament. It was the largest ever (both men and women) and was acclaimed by all as a colossal success. Fred's committee was comprised of Butch Singo and Jim Ellison from the Central Chapter, Dan Meyers from the West Coast Chapter, and Kevin Downing and Tim Hiers from the Palm Beach Chapter.

Much praise is given to Larry Kamphaus for the excellent condition of the Disney World courses. No one could ask for better facilities. All would go for naught if the playing surface was inferior.

If you did not go to the G.C.S.A.A. Turf Conference and Trade Show in New Orleans you missed an excellent opportunity to learn, to view, to observe, to refresh, to acquaint, to renew, and to familiarize yourself with the past experiences of some, the future desires of others, the present state of affairs, the comparable situation of your near and far neighbors, the newest equipment and merchandise, and of course the inner workings and intricate mechanisms that make our organization tick.

The Florida Turf Grass Association is launching a drive for research funds which **MUST** and **WILL** be a success only if you understand it, get behind it, and contribute to it.

Congratulations go to Dan Jones, Dave Bailey, and all those who contribute to our award winning publication. What an outstanding year for the *Florida Green*!

And of course as this is being written (middle of February) we are in constant negotiations with the South Florida Water Management District regarding the water crisis, our impact on it and the Environment and, conversely, its impact on us. By the time you receive this article you will have been informed as to the content of their use restriction matrix.

Put this all together and what do you have? A profession that is worthy of support. A profession that places a burden on everyone. A profession that is demanding. A profession that is also rewarding and very gratifying. Unfortunately this is also a profession that provides the opportunity to garner a great deal without ever paying your dues. And I'm specifically pointing a finger at those who partake, and quite often criticize, but never reciprocate with objective participation. Sit back and enjoy the results of other labors; share the benefits of other experiences; play golf at the finest facilities, but don't be concerned about the education program; read the finest trade magazine, but don't be an active part of your association — in fact don't even belong to any superintendent's group and you still are able to reap most of the ripe harvest.

I trust I am preaching to the segment that needs chastising, but I fear these words will only reach those who already care. To those I apologize. To those who are the target, wake up; take your hands out from under your butt; pull your head out of the sand; become tuned to the action around you. The profession of golf course superintendent is making steady progress. Look what you have going for you! G.C.S.A.A. is alive and running on all cylinders. I can sense a dynamic reformation taking place. Outstanding, competent staff implementing the desired programs of elected, dedicated officers is a combination hard to beat. Your state and local associations are governed by committed fellow superintendents. This magazine is **YOUR** excellent communication tool. Everything is being unselfishly done for you. Why don't you respond by becoming an active part? Join your local association, the state association, the national association, and also the Florida Turf Grass Association. Florida cast a block vote of slightly over 200 in the recent G.C.S.A.A. election — there is absolutely no reason why that cannot be 300 next year. Join now and don't anyone tell me they can't afford the dues — you cannot afford **NOT** to be a member of all those associations. You want to share in the profits? Then share in the costs! Come out of the barn, put on a coat and tie, put down the beer can, and stand up and be counted. At the South Florida Water Management District Governing Board Meeting held on Feb. 12, 1982, Mr. Robert Clark, Chairman, referred to us as **PROFESSIONALS**. Please let's look the part, let's act the part, let's **BE** the part, and let's **BE** it by the members. **JOIN AND PARTICIPATE!**



Bill Wigner