

# Perfect Partners

**IBDU and Sulfur Coated Urea**

**A new concept in slow release fertilizers to give you high performance at an economical cost.**

Now you can get all the performance of a slow release fertilizer at a cost lower than most other professional fertilizer products.

New IBDU/SCU<sup>™</sup>\* mixes combine three nitrogen sources—IBDU, Sulfur Coated Urea and Ammonium Sulfate—to give your turf short, intermediate and long nitrogen release. This three-stage release results in a constant, even rate of turf feeding that lasts for up to 90 days.

Yet the price of IBDU/SCU fertilizers is less than you would expect to pay.

### **A First for Turf**

New IBDU/SCU fertilizer mixes can provide your turf a combination of features never before available in a single fertilizer. It gives your turf all



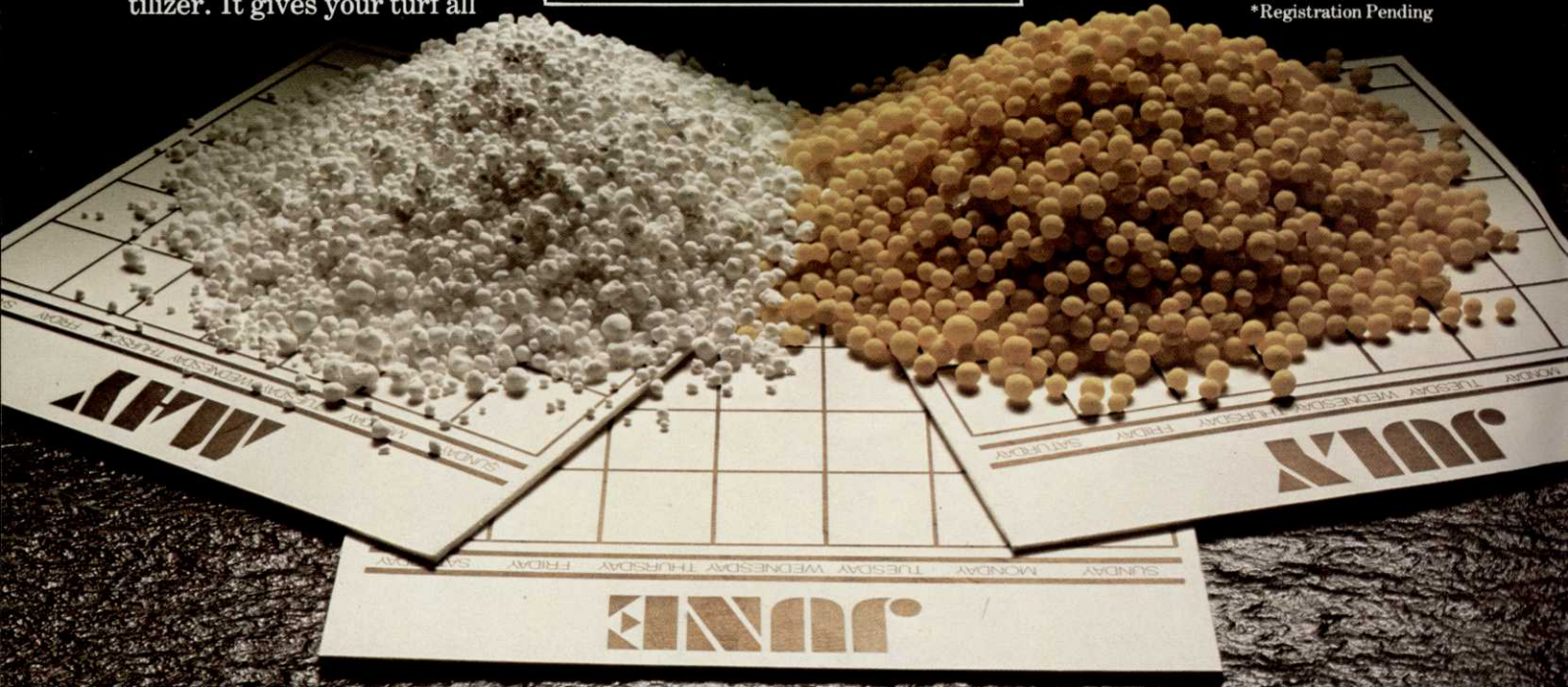
the benefits of IBDU, the highest performance slow release nitrogen available, with the proven benefits of a high quality prilled Sulfur Coated Urea. Plus, there's water soluble Ammonium Sulfate to get your turf off to a fast, green start. IBDU/SCU fertilizers are available in a variety of complete mixes, custom formulated to regional turf requirements.

See your local distributor or PAR EX representative about the new IBDU/SCU fertilizer mixes. They just might be the perfect partner for your fertilizer budget.


Estech General Chemicals Corporation  
Selvitz Road, Ft. Pierce, FL 33450  
305/464-3511

2121 3rd St., S.W., Winter Haven, FL 33880  
813/293-3147

\*Registration Pending



**par ex**  
PROFESSIONAL PRODUCTS

A man with glasses and a goatee, wearing a dark jacket over a light turtleneck and dark pants, stands in a laboratory. He is leaning on a black stool with a white lab coat draped over it. To his left is a wooden lab bench with various glass bottles and equipment. Behind him, two large wooden doors are open, revealing a vast, flat landscape with rows of small, green grass clumps planted in a grid pattern, stretching towards a green horizon under a clear sky.

# “Welcome to the South’s next great winter golf green.”

— Howard Kaerwer, Director of Turf Research at Northrup King’s Research Center

From one of these unlikely looking clumps of ryegrass will come the next improvement in Northrup King Medalist Brand® Over-seeding Mixtures. The South’s most successful blends for over a decade.

Howard Kaerwer and the Northrup King research team have devoted thirty years to developing new grasses and perfecting blends. The results are products such as Medalist 7 Brand, the rugged, dependable ryegrass blend that lets *you* control transition. And new grasses like Delray, with lower nitrogen requirements and better tillering than any other ryegrass on the market.

When Howard isn’t in the lab he’s on the links talking to superintendents, conducting field experiments and collecting new grass samples to bring back for testing.

Has Howard’s hard work paid off? Ten years after the introduction of Medalist Brand, 90% of 250 original customers were still with Northrup King. And since then, the number has grown to over 400 golf courses throughout the South.

Ask your Northrup King distributor how to make your course even better with Medalist Brand, the South’s most successful winter over-seeding blends.

Or write: Medalist Turf Products, Northrup King Co., P.O. Box 370, Richardson, TX 75080 or P.O. Box 959, Minneapolis, MN 55440.



# How to cut your



Long-lasting Chipco® 26019 fungicide is as good for your budget as it is for your turf.

Because it gives you the longest residual activity, you'll need fewer treatments on greens and tees with Chipco 26019. And fewer treatments on fairways, where it controls diseases longer...from 21 to

28 days. So for every treatment you eliminate thanks to Chipco 26019, you'll save up to \$10 an acre in fuel and labor!

And Chipco 26019 is strong medicine. No other fungicide gives better control of the major turf diseases. Chipco 26019 is effective on *Helminthosporium*

# operating costs.

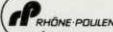


Please read label carefully, and use only as directed.

Leaf Spot and Melting Out, Dollar Spot (including benomyl-resistant), Brown Patch, Fusarium Blight, Fusarium Patch (Pink Snow Mold), and Gray Snow Mold.

For healthier turf on greens, tees and fairways — plus a healthy cut in operating costs — control diseases with long-lasting Chipco

26019. It's just what the doctor ordered.

Rhône-Poulenc Chemical Company, Agrochemical Division, Rhône-Poulenc Inc., Monmouth Junction, NJ 08852. 

**CHIPCO 26019.**  
**It's strong medicine.**



# THE GT-7. ITS CARRYING CAPACITY IS NO EMPTY CLAIM.



No other golf utility vehicle on the market has a bigger carrying capacity than the GT-7. It'll haul a 1500 pound payload at up to 24 mph, without so much as a complaint. And its 19 cubic feet of cargo area can save you extra trips.

It's also available with a full line-up of accessories for aerating, seeding and spreading, top dressing or spraying.

The GT-7 is easier to service, has undentable fenders and a diamond steel rear bumper. Yet it

sells for about the same price as the leading competitor.



But don't just believe our claims. For a demonstration on your course, just call your E-Z-GO Branch Office or Distributor. They're in the Yellow Pages. Or call us at (612) 542-0516.

**E-Z-GO**  
**TEXTRON**

E-Z-Go Division Textron, Inc.  
P.O. Box 388 (13) • Marvin Griffin Rd.  
Augusta, Ga. 30913

## President's Message

After my recent comments on becoming active in the organizations which contribute heavily to the life blood of our profession, the following remark may sound contradictory.

"I think there are too many meetings."

"Let's back up and start in the beginning so we can analyze the situation and perhaps realize why those words are not inconsistent with my thoughts on effectual participation—rather they are germane to the fact.

Everyone must, yes must—not should, belong to a local superintendent's association. If you have chosen this profession as your career, then how can you honestly expect to take advantage of all the benefits without offering any contribution in return. "It's not what my country will do for me but rather it's what I can do for my country" may sound square, but it does hold true in all levels of existence. Certainly you don't just take from your family life without offering anything in return. Hopefully, while receiving, you contribute to your community, your church, your work, and anything else of importance and value to you. But how much can anyone give of themselves? And I am talking about a combination of money and time—both essential to the culmination of any cause.

In my opinion, a superintendent must also belong to the State association, the FT/GA, and the GCSAA—all absolutely vital segments in the wheel of successful maintenance of a golf course. That superintendent must make every effort to attend the GCSAA Turf Conference. This association is the outer rim which holds the industry wheel together. It cannot be a successful binder without your money and talent when requested.

That same superintendent must make an even greater effort to attend the FT/GA Turf conference. This association is one of the essential spokes in that success wheel due to the close affiliation with IFAS, our local potential supply of expertise, and the ability to gather and disseminate information of value for us. Again this association needs your money and your time and; your talent to enable it to hold up its portion of the wheel.

The FGCSA and the local chapters are the other essential spokes with the individual superintendent being the hub. The rim is a needless hoop without spokes or a hub. The spokes are useless pegs without an attachment at both ends. And, although nothing can start to roll without the hub, it in itself is confined to rotating in its own tiny circle and would be ineffectual without the spokes and rim. It takes all to be a successful wheel.

Participating in and/or partaking of the GCSAA conference requires at least five days; the FT/GA conference, Golf Tournament, and FGCSA annual meeting four days. These events amount to what should be classified as required meeting time. There are now two other well established and managed golf tournaments—Poa Annua and Crowfoot. These must be supported as they contribute to our social well being and business survival. More required time of the superintendent—time important to both the event and the participant.

I personally think the local chapter meetings should be reduced to four per year—fewer and, hopefully, better. Many monthly meetings have and continue to amount to a social outing, lunch and golf, a very inexpensive and enjoyable day away from the job.

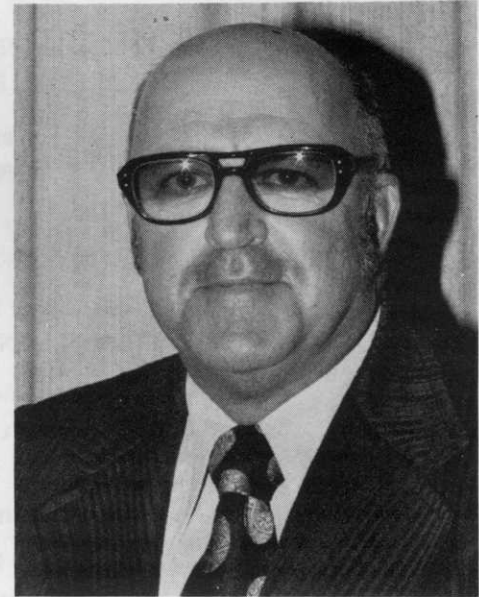
Try on this schedule for a year:  
Four good, one day, educational programs  
Four informal golf outings (seperate from above)  
Two golf tournaments  
FT/GA conference and tournaments  
GCSAA conference

Six educational opportunities—seven golf opportunities

An individual would be **REQUIRED** to attend three of the educational sessions to qualify him for participation in the golf events. Too drastic, too demanding, too restrictive—I don't think so.

The greatest reward for man's toil is not what he gets out of it, but rather what he becomes from it.

Maybe, just maybe, we all can become slightly better superintendents and better contributors to our society.



*Bill Wagner*

# The Florida Green

The Official Bulletin of the Florida Golf Course Superintendents Association  
 Florida Green Phone: Days — (305) 793-0069 or 793-2497

## Officers and External Vice Presidents for Florida G.C.S.A.



### BILL WAGNER.....President

Tequesta Country Club  
 22 Pine Tree Circle, Tequesta, FL 33458 • (305) 746-4408

### KEVIN DOWNING, C.G.C.S. ....Vice President

Atlantis Golf Club  
 301 Orange Tree Dr., Atlantis, FL 33426 • (305) 965-6316

### DON DELANEY, C.G.C.S. ....Secretary-Treasurer

Isle Del Sol Country Club  
 6025 Sun Blvd., St. Petersburg, FL 33715 • (813) 866-0313

### ALAN WEITZEL.....South Florida

Metro Dade County Golf Courses  
 15810 S.W. 99 Ave., Miami, FL 33157

### FRED KLAUK.....Palm Beach

Pine Tree Golf Club - R.R. #1  
 Pine Tree Box 200, Boynton Beach, FL 33436 • (305) 732-6404

### TOM BURROWS.....Treasure Coast

Turtle Creek Club  
 Club Circle Drive, Tequesta, FL 33458 • (305) 746-8911

### JAMES ELLISON.....Central Florida

Bay Hill Club and Lodge  
 6200 Bay Hill Blvd., Orlando, FL 32811 • (305) 876-2402

### BOB SANDERSON, C.G.C.S. ....Everglades

Port Charlotte Golf Course  
 425 Oneida, Port Charlotte, FL 33952 • (813) 625-7192

### JOHN HAYDEN, C.G.C.S. ....North Florida

San Jose Country Club  
 607 Bowles Court, Neptune Beach, FL 32233 • (904) 733-3464

### CHARLES RETTEW, C.G.C.S. ....Gulf Coast

US NAS Recreation Department  
 Route 8 Box 695, Pensacola, FL 32506 • (904) 455-2555

### REED LeFEBVRE.....West Coast

Pines & Palms Management Corp.  
 3820 Cason Road, Plant City, FL 33566

### ROYCE STEWART.....Suncoast

Conquistador Bay C.C.  
 4400 Conquistador Pkwy., Bradenton, FL 33507 • (813) 756-9555

## TABLE OF CONTENTS

President's Message .....	7
Watching Your Tees & Q's .....	10
Goosegrass .....	12
The Gator Grows .....	14
Central Florida Crowfoots .....	16
West Coast Buccaneers .....	18
On The National Scene .....	
Palm Beach Chapter: Golf Course Superintendent's Association .....	20
Rhone Poulenc Names New Chipco Product Manager .....	21
Mole Crickets: Your Enemy Below .....	24
POA Annua Classic .....	32
Compensation: A View From The Other Side .....	35
Wet Soil & Carts .....	36
Palm Beach Trade Winds .....	39
Treasure Coast "Tide"ings .....	40
North Florida Divots .....	41
South Florida Sunshine .....	45
Editorial .....	46

## ABOUT OUR COVER

Hole No. 9 of the Gold Course at Wyndemere Country Club, Naples, Florida. Mark Hampton is the golf course superintendent. See page 37.

**NOTICE:** All correspondence concerning business matters, circulation, editorial and advertising should be addressed to the Editor, P.O. Box 5958, Lake Worth, Fla. 33461. Opinions expressed by writers in by-lined editorials are not necessarily those of this publication. "The Florida Green" is published quarterly: the 1st of January, April, July, October. Closing date for advertising and copy is 45 days prior to publication. Not copyrighted. Please credit the author and "The Florida Green."

### Dan Jones, C.G.C.S., Editor

Banyan Golf Club



### David Bailey, C.G.C.S.

Atlantis Country Club  
 Associate Editor



### Daniel Zelazek Cover Photography



## Florida Green Reporters

South Florida.....	Brad Kocher
Palm Beach.....	Mike Bailey
Treasure Coast.....	Jim Callaghan
Central Florida.....	Jim Ellison & Gary Morgan
North Florida.....	Ed Snipes
West Coast.....	Reed LeFebvre
Everglades.....	Dan Hall

# If your pumping station has left you high and dry, call AquaTurf.



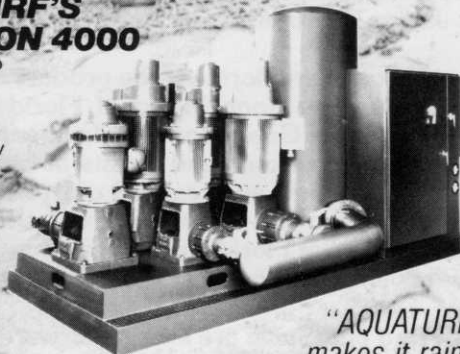
AquaTurf irrigation and pumping systems are custom designed to keep golf courses green, from the sun-baked fairways of the South and Southwest to tees and greens from Maine to Washington.

AquaTurf's unique "brain" tells you exactly what your system is doing at all times. You set the program. It waters your course, exactly the way you want it watered.

To find out more about how AquaTurf can solve your irrigation problem, call or write today.

## **AQUATURF'S POSEIDON 4000**

FOUR-PUMP  
STATION  
Backup  
dependability  
coupled with  
maximum  
flexibility  
and  
operational  
savings.



*"AQUATURF  
makes it rain  
while the sun shines."*

- Please send complete information about AquaTurf's pumping system with a brain.
- Please have someone call to discuss our golf course irrigation problem.

Your name \_\_\_\_\_ Position \_\_\_\_\_

Name of country club  
or golf course \_\_\_\_\_

Address \_\_\_\_\_ Phone \_\_\_\_\_

City \_\_\_\_\_ State \_\_\_\_\_ Zip \_\_\_\_\_

## **AquaTurf**

11363 San Jose Boulevard  
Jacksonville, Florida 32217  
904/268-6707



# Watching Your Tees & Q's

by Steve Batten and Bud White  
United States Golf Association—Green Section  
Southeastern Region



## MONTY MONCRIEF RETIRES

As of June 30, 1982, James B. (Monty) Moncrief, Director of the USGA Green Section, Southeastern Region, will officially retire. For more than 25 years, Monty through the Green Section, has served over 100 golf courses in Florida. Monty always said he was in the "information sharing business" as he talked about growing turfgrass with his colleagues.

During this time, he was responsible for bringing the first Tifdwarf bermudagrass plug to Dr. Glen Burton in 1961 for field evaluation. Since then, he has continued bringing plugs of natural mutations from golf courses to Tifton, Georgia, hoping to help further improve the section of fine bladed bermudagrasses.

Monty is a member of the American Society of Agronomy and is a certified profession agronomist. He has always supported superintendents association efforts, which is reflected by his membership in 13 of these organizations. Monty has consulted in 19 states and 6 countries outside the U.S. He has just received the A.W. Crain Diamond Award, the highest turfgrass award given in Texas. Other honors include the indoctrination into the Oklahoma Turfgrass Research Foundation Hall of Fame Award in 1977.

When asked what he will do after retirement, Monty said he's going to join the big league and play all those golf courses he visited. That should keep him busy for the next 25 years. If you see Monty playing golf, be sure to remind him of a few simple rules he often spoke of. That is, play the course as you find it, and the ball where it lies.

Monty will remain very active in the Green Section and the turf industry after his retirement. He is part of the new USGA Turfgrass Research Foundation Committee which will fund hundreds of thousands of dollars for turf research over the next years. He will also frequent superintendent association meetings and accept speaking engagements.

Monty Moncrief may get a chance to catch his breath, but he will never retire...we won't let him! ■

Charles "Bud" White, Southeastern Senior Agronomist, will become the Southeastern Regional Director for the USGA following Monty's (semi-) retirement. The office will still be housed on the University of Georgia campus in Athens, Georgia. Since last fall's football season, Bud is the only Clemson grad allowed near the University of Georgia campus.

## NEW USGA OFFICE IN FLORIDA

The Southeastern Region of the Green Section now has a new sub-regional office in Florida. This office will be headed by Steve Batten and located in Lake Worth. Steve joined the USGA on February 16, 1982—25 years to the day after Monty began his USGA career. Steve is originally from Oklahoma City, Oklahoma and has a BS and MS in agronomy from Oklahoma State University. During the past four years he has been the research associate for Dr. James Beard at Texas A&M University.

The new office in Florida is the product of over ten years of promotion by Monty Moncrief. Florida has over 30% of the total USGA Green Section Membership in the Southeastern Region alone, and boasts of more than 700 golf courses. The new sub-regional office is unique in being one of only two sub-regional offices in the United States. This means that Florida golf course superintendents can take advantage of having local USGA benefits.

Both Bud and Steve are looking forward to sharing their information and talents with the Florida golf course superintendents. ■



Mr. & Mrs. Monty Moncrief