

For 10
full years,

the South's
most
successful
blends.



**Medalist[®]
Brand
Winter
Overseeding
Blends.**

Northrup King introduced them 10 years ago and by 1973 they were keeping greens and tees green and healthy all winter long at over 250 Southern courses. Today, Medalist blends are still used at 90 percent of those courses. And another 215 Southern courses have discovered Medalist blends, too.

That's success.

All those golf courses use Medalist blends for plenty of hard-nosed reasons. Medalist blends establish rapidly. They mow beautifully. Their transition characteristics are excellent. And they're exceptionally reliable.

The latest Medalist blend is Medalist 6 and it's a standout. That's why it will help keep more and more greens in top shape all winter long. Ask your Northrup King man how to make your course even better. He'll tell you about all the Medalist blends, including Medalist 6.

And he'll be more than happy to pour you some.

For more information, write:
Medalist Brand Formulas,
Northrup King Co.,
P.O. Box 370, Richardson,
Texas 75080.
Or 4801 Lewis Road,
Stone Mountain, Georgia 30083.

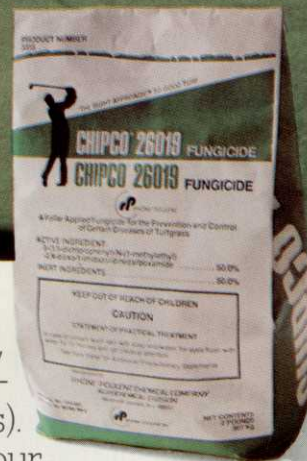


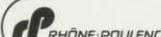
CHIPCO



**LONG-LASTING
CHIPCO® 26019 IS
STRONG MEDICINE.** If you're serious about protecting your turf against diseases, give it your best shot. Spray Chipco 26019 fungicide. Thousands of superintendents have switched to Chipco 26019 in the past two years. And no wonder. Chipco 26019 gives you the longest residual. You can cut the number of sprays in your program, and that cuts your costs. And Chipco 26019 prevents the major turf diseases with unsurpassed effectiveness. You'll get good results with Chipco

26019



26019 against dollar spot (including benomyl-resistant dollar spot), Helminthosporium (leaf spot and melting out), brown patch, Fusarium blight and Fusarium patch (west of the Cascade Mountains). Chipco 26019 also suppresses grey and pink snow molds. Ask your Chipco distributor or Rhône Poulenc representative about effective, long-lasting Chipco 26019...the strong medicine in turf disease prevention. Rhône Poulenc Chemical Co., Agrochemical Div, Rhône Poulenc Inc. Monmouth Junction, NJ 08852. 

THE GT-7. ITS CARRYING CAPACITY IS NO EMPTY CLAIM.



No other golf utility vehicle on the market has a bigger carrying capacity than the GT-7. It'll haul a 1500 pound payload at up to 24 mph, without so much as a complaint. And its 19 cubic feet of cargo area can save you extra trips.

It's also available with a full line-up of accessories for aerating, seeding and spreading, top dressing or spraying.

The GT-7 is easier to service, has undentable fenders and a diamond steel rear bumper. Yet it

sells for about the same price as the leading competitor.



But don't just believe our claims. For a demonstration on your course, just call your E-Z-GO Branch Office or Distributor. They're in the Yellow Pages. Or call us at (612) 542-0516.

E-Z-GO
TEXTRON

Polaris E-Z-Go Division of Textron Inc.
1225 No. Cty. Rd. 18, Mpls., MN 55427

Palm Beach Tradewinds

(Continued from Page 9)

Michael Bailey also had golfers tell him that those nine greens were different and wanted to know why? Michael Bailey says, "It's not that the color is so much better but the density and wear factors had improved. The dusted greens also outgrew a previously checked disease problem faster than the nondusted greens."

The cost of application is about \$250 per plane hour. When just greens and slopes are being done the normal \$6.50 per acre rate cannot be used. Many variables will affect the cost. Your distance from the crop service airport, concentration of material (more water hauled = more time), design of course for flight patterns. Material cost is 39-60¢ per pound.

In conclusion Michael Bailey is pleased with the experiment. He says, "Next year I am going to do the whole golf course from tee to green. Because of excellent cold weather response I will skip one of my dry fertilizer applications in the winter and use activated charcoal. The cost will be about 1/3 less and give a better visual result. Soil test will determine what dry fertilizer is applied prior to the cold season. A high nitrogen liquid fertigation program will be used all winter."

Next time you hear an airplane while you are putting, look out! You better hope it's not Michael Bailey and Bob King doing another experiment. ■

Schmeisser Scholarship Awarded

At a recent meeting of the Florida Turf-Grass Association Scholarship and Research Foundation Board of Directors, action was taken to create a scholarship at the Lake City Community College in memory of the late Hans C. Schmeisser, the "Grand Dean" of golf course superintendents.

This scholarship, named The Hans Schmeisser Memorial Award, will be made annually to the Lake City Community College student, enrolled in the Golf Course Operations School, that most exemplifies the qualities that Mr. Schmeisser possessed during his long, and most honored, turf career. This award carries a \$1,000.00 cash compensation.

Mr. Schmeisser, who passed away in October, 1980, had been superintendent of Forest Hill Golf Course, West Palm Beach, for the past 15 years. He was a consultant, golf course designer and builder and superintendent for nearly all of his 88 years. He was made an honorary member of the FT-GA in 1976 and a posthumous confirmment of the Golf Course Superintendent's Association of America "Distinguished Service Award" was made at their 1981 Annual Convention.

One of his sons, Otto, is a member of the FT-GA and is superintendent of the Everglades Club in Palm Beach. His other son, John, is associated with Robert Trent Jones, the noted golf course architect. ■

A New St. Augustine Grass

Something new and exciting has happened on Florida's west coast. It is a new St. Augustine grass "Seville". Seville is flourishing beautifully on Pursley's Sod Farm located on Florida's suncoast approximately 25 miles south of Tampa.

Seville is a semi-dwarf, vigorously growing perennial turf-grass with several outstanding attributes. It has a uniform texture, short internodes, shorter and narrower leaf blades as compared to other St. Augustine varieties like Floratine and Floratam, a tendency to grow horizontal, a rich dark green color, excellent tolerance to shade and cold, moderate seed head production ability and resistance to St. Augustine Decline Virus (SAD). It is not resistant to chinch-bugs but has shown strong tolerance to gray leafspot disease. Seville is somewhat easy to maintain and requires less frequent mowings than other cultivars, an obvious advantage from the standpoint of energy conservation. Moreover, because of shorter and narrower leaf blade, it does not produce excessive thatch. Color retention and spring green up rate are good under moderate fertilizer and cultural management. It has responded well to nitrogen fertilization and supplemental iron.

Seville was developed in 1968 by Dr. Terry Riordan, former Turfgrass breeder at O.M. Scott & Sons Company in Marysville, Ohio. Parent lines used for this cross were originally grown at O.M. Scott's Research Station in Apopka, Florida. Dr. Riordan is currently employed at the University of Nebraska in Lincoln, Nebraska. Soon after the development of Seville, a plant patent was obtained by Dr. Terry Riordan and Jake T. Gruis of O.M. Scott & Co., but now the patent and the exclusive propagation and marketing rights have been acquired by Pursley Sod Farms.

Over the last eight years, Seville's performance has been tested in field at various locations in Florida, Texas and California. Pursley Sod Farm has established several test plots at various locations in Florida and Georgia. Among them are Walt Disney World Tree Farm in Orlando, University of Florida Campus in Gainesville, Maclay Garden State Park in Tallahassee, Deerwood Country Club in Jacksonville and University of Georgia Campus in Athens. Seville is also being grown on a few home lawns in Apopka. ■

Cost of Federal Regulations

OMB now estimates that the annual cost of federal regulations affecting U.S. industry costs \$135 billion. These regulations add 10% across the board to business expenditures. EPA is responsible for 77% of these costs while the Equal Opportunity Administration ranks second with 7% and the Department of Energy at 5%. Federal regulatory costs are now equivalent to 5% of the entire gross national product and costs every American \$500 a year, personally, or \$2,000 per family. (Burt Bohmont, CSU) ■

ATLANTIC

SULPHUR COATED UREA

For That Deep Long Lasting Green
Without Excessive Growth
ATLANTIC SULPHUR COATED UREA
Is the Answer!

Ask Your Atlantic Representative for the
Formulations Available

ATLANTIC Fertilizer & Chemical Co.
Homestead, Florida
In Dade 247-8800 All others 1-800-432-3413

Superintendents Aid Turf Fund

By VINCE SMITH

The Everglades Chapter of the Florida Golf Course Superintendents Association is one of the most active and intense organizations of its kind in the nation.

The Everglades Chapter contains, as its members, the men who are in charge of maintaining the playing surfaces of all golf courses in Southwest Florida.

The association meets monthly and during these sessions, a wide variety of subjects are discussed, the superintendents listen to talks from key figures in the turf management field and then they get to play a round of golf themselves.

Last month's meeting at Myerlee Country Club produced a good cross-sample of the activities members become involved in and foremost, the continuing new problems each of them face in their daily efforts to keep Southwest Florida's golf courses green.

At the Myerlee gathering a research donation of \$400 was presented to Dan Jones, vice president of the Florida Turf-Grass Association.

To the casual golf club member, this small grant does not reflect the full impact of the reason for the gift. But for golf course superintendents, the \$400 was a gesture of intense purpose which is a portion of a head-to-head confrontation with the increasing crises facing these professional workers.

The money chipped in by the Everglades Chapter will be pooled with donations from the state's seven other chapters. The total fund will be used for specific golf turf research at the University of Florida.

The almost frightening problems golf course superintendents are facing today because of environmental regulations, possible water shortages and the banning of proven pesticides are forcing research into new areas of turf management.

Some of these new territories include biological control of pests and grasses more resistant to wear with less water and fertilizer.

To maintain the quality playing surface that today's golfer demands research is going to play a vital role in the future.

And no one is more aware of this than the members of the Everglades Chapter of the Florida Golf Course Superintendents Association.

Although the superintendents' prime concern right now is research, the Everglades Chapter also concerns itself with the continuing education of young people seeking careers in the turf management field. ■

(Continued on Page 17)



- Golf Course Grassing
- Renovation
- Custom Fumigation
- Fla. State Certified Grasses

Experienced,
Knowledgeable People
Providing Only
The Highest Quality
Workmanship

"Unconditionally Guaranteed"

Over Seeding Grasses
of All Varieties

Stan Cruse and Associates
(813-722-4547)

Rt. 1, Box 402-X, Palmetto, Florida 33561

A DIVISION OF  **purley, inc.**

Two scholarships were presented by the Everglades Chapter during its meeting at Myerlee.

Dick McCandless received the Jesse Medhurst Memorial Scholarship. He will be graduating from Lake City Community College in May with an A.S. degree in Golf Course Operations.

McCandless' on-the-job training experiences came at Jekyll Island, Ga., and Arnold Palmer's Bay Hill Club near Orlando. He worked at Lely County Club in Naples under Superintendent Chuck Belyea before attending Lake City.

Brad Walters was recipient of the Ken Willis Memorial Scholarship. He is currently in his second year of the turf management curriculum at Lake City.

A graduate of Cypress Lake High School, Walters has worked at several Lee County courses including Myerlee and last summer took on-the-job training at Palmetto-Pine Country Club in Cape Coral under Superintendent Mark Selby.

Both McCandless and Walters received checks of \$250 from the Everglades Chapter to help in their schooling.

Meanwhile, the chapter is looking forward to its seventh annual Poa Annuu Classic, its No. 1 golf outing each year.

Strictly a fun-type day, the Poa Annuu Classic will be held at Mirror Lakes Country Club in Lehigh Acres, April 28. Rick Cook is host superintendent and expects his fellow maintenance technicians and turf suppliers to quickly fill the 144 openings for the 11 a.m. shotgun start.

But up until that one-day, 18-hole picnic, members of the Everglades Chapter will be hard at work, applying all their knowledge and skill to further combat the daily annoyances that constantly disrupt the tee-boxes, fairways and greens of the golf courses we all love to play. ■

Reprinted from Fort Myers News-Press, Wednesday, March 11, 1981.

Everybody, Somebody, Anybody, Nobody

By CLINT SMALLRIDGE, C.G.C.S.
Royal Ponciana Golf Club

This is a story about four people:

Everybody, Somebody, Anybody and Nobody. There was an important job to be done and Everybody was asked to do it. Everybody was sure Somebody would do it. Anybody could have done it, but Nobody did it. Somebody got angry about that because it was Everybody's job. Everybody though Anybody could do it, but Nobody realized that Everybody wouldn't do it. It ended up that Everybody blamed Somebody when actually Nobody asked Anybody.

OUR GAME IS IMPROVING YOUR TURF



FERTILIZERS-CHEMICALS-FUMIGANTS

See your Superior Golf Course Specialist

LAMAR "SUNNY" SMITH ED HAITHCOCK DARRYL REJKO
Mobile: 305/832-0451 Mobile: 305/581-6123 813/576-9214
Unit 636 Unit 2425

PLANTS IN TAMPA AND FT. PIERCE

LANTANA PEAT & SOIL

1123 State Road 441
Boynton Beach, Fla.

Call "Ted" Collect

1-305-732-4116

STERILIZED SOILS

TOP DRESSING ■

TOP SOIL

KEEPING GOLF COURSES GREEN

EDB Poses Fire Hazard

By D. S. ADAMS
Plant Pest Regulator Service
Clemson, South Carolina

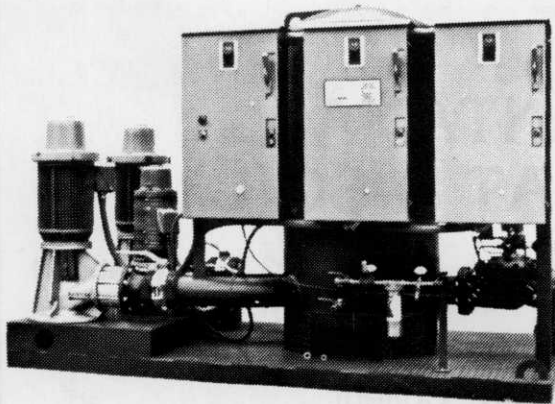
Ethylene Dibromide (also known as Soilbrom 90, Dowfune W-85 and Royal Fume 85) presents a hazard when used with aluminum and the heat from the reaction can result in explosion and fire. There has been one report of a fire when the applicator used a pump with aluminum parts and an aluminum suction pipe which extended into the pesticide.

This compound also reacts vigorously with other metals such as magnesium, sodium and potassium, strong alkalis and oxidizing agents.

If a fire should occur, use water spray, dry chemical, foam or carbon dioxide in areas where ethylene dibromide is stored. Use water to keep fire-exposed containers cool.

When using any of the products containing ethylene dibromide, avoid using any aluminum equipment for storage, application or transfer.

Peach Update, June, 1980



PRECISION PUMPING STATIONS



**Carroll
Childers
Company**

Post Office Box 23417
Fort Lauderdale, FL 33307
Telephone (305) 564-1155

Michael J. Misunas

Post Office Box 12951
Houston, Texas 77017
Telephone (713) 649-5780

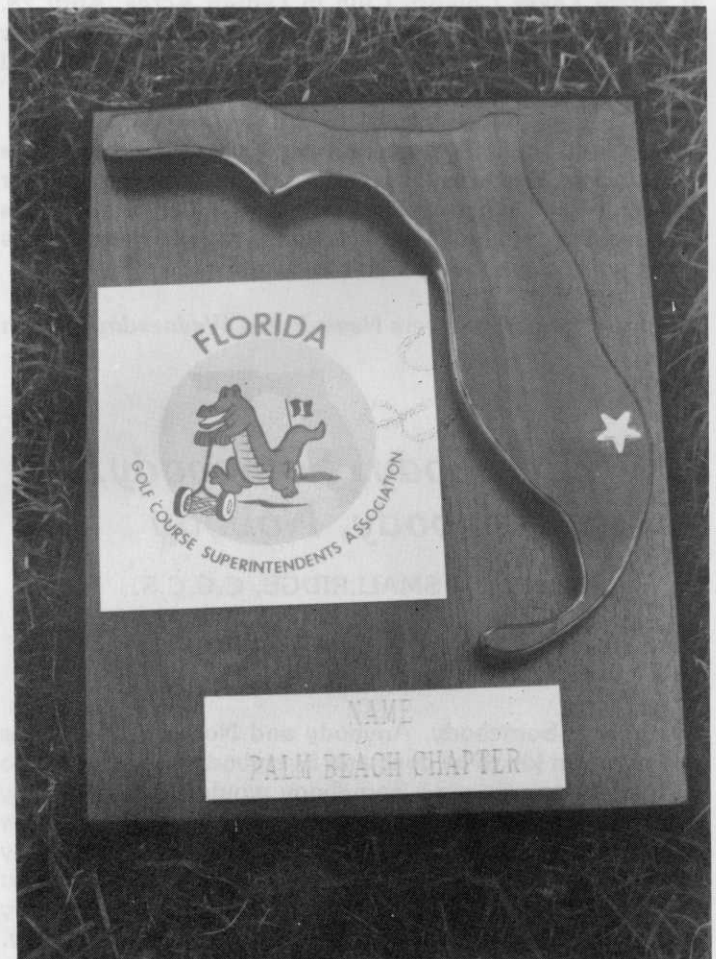
Carroll Childers

Plaque for Sale

The official Florida Golf Course Superintendents Association plaque is now for sale. The plaque has the state logo, your name, your chapter. The location of your chapter is marked on a 3-D wood carving which is the shape of Florida.

The plaque can be purchased by mail. The delivered price is \$17.50 plus \$.70 tax, \$18.20 total. The address is Manhattan Trophies, 13 South Dixie Highway, P.O. Box 1169, Lake Worth, Florida 33460. On your request please PRINT your name and chapter.

Make your office a showplace! Have a state plaque showing your local chapter hanging next to your national plaque! ■



If your pumping station has left you high and dry, call AquaTurf.



AquaTurf irrigation and pumping systems are custom designed to keep golf courses green, from the sun-baked fairways of the South and Southwest to tees and greens from Maine to Washington.

AquaTurf's unique "brain" tells you exactly what your system is doing at all times. You set the program. It waters your course, exactly the way you want it watered.

To find out more about how AquaTurf can solve your irrigation problem, call or write today.

AQUATURF'S POSEIDON 4000

FOUR-PUMP
STATION
Backup
dependability
coupled with
maximum
flexibility
and
operational
savings.



*"AQUATURF
makes it rain
while the sun shines."*

- Please send complete information about AquaTurf's pumping system with a brain.
- Please have someone call to discuss our golf course irrigation problem.

Your name _____ Position _____

Name of country club
or golf course _____

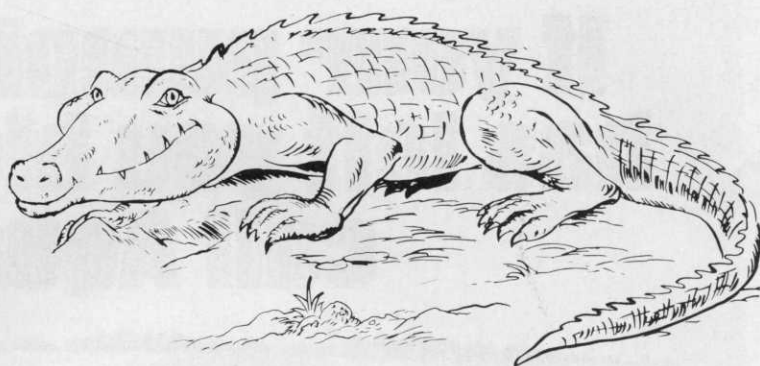
Address _____ Phone _____

City _____ State _____ Zip _____

AquaTurf

11363 San Jose Boulevard
Jacksonville, Florida 32217
904/268-6707

The Gator Growls



By **BOB SANDERSON, C.G.C.S**
Port Charlotte C.C.

This year, even though the financial outlook nationwide is unsteady, many superintendents in Southwest Florida are planning some extensive renovation for their golf courses. Most of the work will center around new golf cart paths, rebuilding tees and adding to existing irrigation.

Randy Vaughn (Jacaranda West) has a work order made up to build 3000 feet of cart path around the greens and tees of his new nine holes. The work is scheduled for June and will cost about \$8,500. Also, he is planning to put in about 500 feet of drainage tile which will run more than \$2500. Jim Lindsay (The Plantation Golf Course), though his course only opened March 14, still plans to spend much of the summer filling and sodding washouts, adding more drainage tile, and possibly adding a few more sand traps. Bob Shaffer (Count Club of North Port) is going to add a little length to two tees during June, and in the meantime he will be reshaping many of his sand traps and continuing the use of asphalt coverings for the swale bottoms already built into the golf course design. His black top cost has more than doubled in the past two years. During this time, he has spent about 400 hours preparing and laying the black top and has covered about 27,000 square feet of drainage area. He used about a ton of material per thousand square feet. In the Port Charlotte area, Bob Sanderson (Port Charlotte Golf Course) will be black topping five or six thousand feet of cart path on the first nine holes during March. He plans to spend under \$10,000. During May, he will be installing TORO automatic heads and controllers on the first nine fairways. The control tubing is already in place having been put there when the first twelve greens and tees were automated two years ago. Meanwhile, Ken Shakeshaft (Rotunda-Oakland Hills Golf Course) hopes to put in cart paths around all 18 greens and tees. His estimate for this work runs close to \$75,000. Dick Bessire (Burnt Store Golf Course) has already started using rip-rap around head walls and bad washout areas in his lakes and swales. Since the entire perimeter area of his golf course has been cleared for new homes, there is an unlimited amount of small rock which can be used for this purpose. Just down the road a few miles, Marc Tallmadge (The Mariner Golf Course) plans to finish the construction of the second nine of his executive course in order to open 18 completed holes by next fall.

Mark Selby (Palmetto Pines Golf Course) will be building a practice area with a green for his members to practice their wedge shots and/or chipping. Also, he is planning to strip the sod off several tees, then level that area and replace the sod. During the rainy season, his plans also call for the course to be closed one day, so Mike Cook can come in and inject all his fairways with EDB at a cost of more than \$7000. Buddy Carmouche (Cypress Lake Golf Course) will be spending \$34,000 to patch and cover his existing cart path which circles the entire course. He also plans to build a new tee for the 18th hole during the early summer. Rick Cook (Mirror Lakes Golf Course) also will be leveling several existing tees on his golf course just after the "Poa Annuu Tournament". Rick will aerify the tees first and then pull a heavy roller across the tees several times to achieve a more level surface. Ten miles to the east, Dennis Weaver (Oxbow Golf Course) is watching a three to four million dollar clubhouse take shape. This building will include a pro shop, cart storage area, meeting rooms, restaurant and will have about 25 motel rooms close by with expansion for more in the future. The completion date is set for early next fall.

Stan Norton (Naples Beach and Golf Club) after extensive greens rebuilding the past two years, now plans to rebuild several tees to complete the reconstruction of one of the oldest golf courses on the west coast of Florida. Architect Ron Garl redesigned all the greens.

Paul Nevers (The Country Club of Naples) is undertaking an ambitious program of reshaping 75% of his sand traps. He will be cutting away in some areas and adding sod to new tongues in other locations in order to achieve the new appearance. He will also be adding new sand to these traps to finish off the program. Meanwhile, Rodger Whitford (The Pelican Bay Golf Course) has been asked to add several sand traps to his new facility and hopes at the same time to add a few ladies tees. Bill Flippen (The Hole-in-the-Wall Golf Course) will be starting a program to build a few ladies tees each year for the next couple of years. He is going to replace his four ice cooled water coolers with electric coolers that have filters on them to improve the taste of local water. Bill's largest project is the replacement of all his Griswald Controllers with Toro Controllers and at the

(Continued on Page 21)