

# Perfect Partners

**IBDU and Sulfur Coated Urea**

**A new concept in slow release fertilizers to give you high performance at an economical cost.**

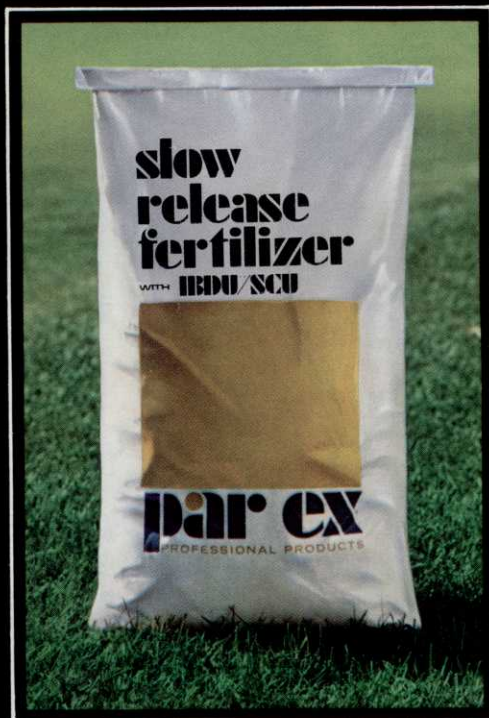
Now you can get all the performance of a slow release fertilizer at a cost lower than most other professional fertilizer products.

New IBDU/SCU<sup>™</sup>\* mixes combine three nitrogen sources—IBDU, Sulfur Coated Urea and Ammonium Sulfate—to give your turf short, intermediate and long nitrogen release. This three-stage release results in a constant, even rate of turf feeding that lasts for up to 90 days.

Yet the price of IBDU/SCU fertilizers is less than you would expect to pay.

### **A First for Turf**

New IBCU/SCU fertilizer mixes can provide your turf a combination of features never before available in a single fertilizer. It gives your turf all



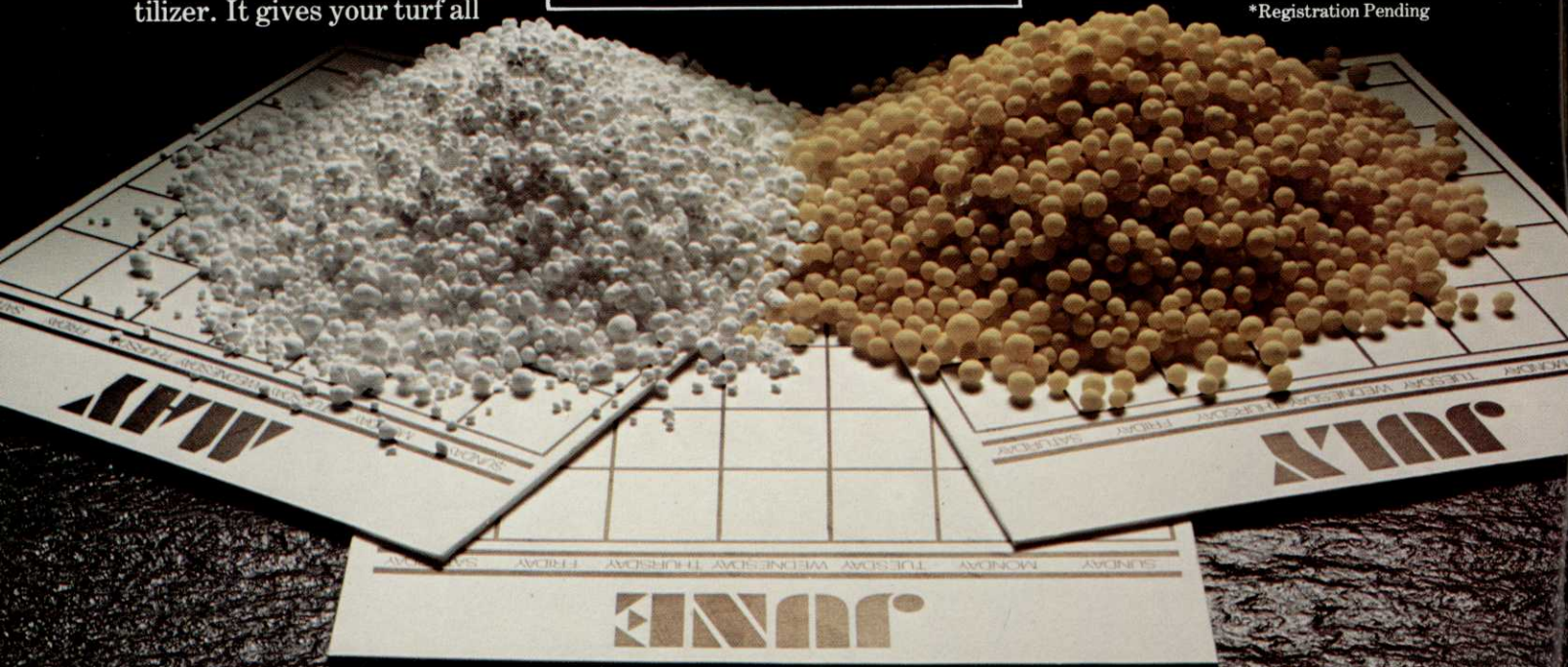
the benefits of IBDU, the highest performance slow release nitrogen available, with the proven benefits of a high quality prilled Sulfur Coated Urea. Plus, there's water soluble Ammonium Sulfate to get your turf off to a fast, green start. IBDU/SCU fertilizers are available in a variety of complete mixes, custom formulated to regional turf requirements.

See your local distributor or PAR EX representative about the new IBDU/SCU fertilizer mixes. They just might be the perfect partner for your fertilizer budget.

Estech General Chemicals Corporation  
Selvitz Road, Ft. Pierce, FL 33450  
305/464-3511

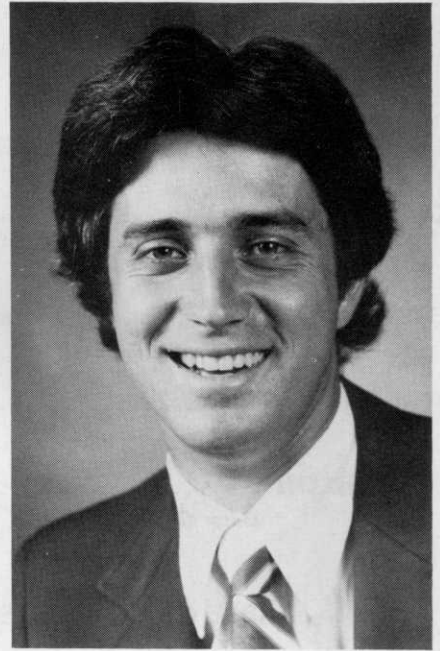
2121 3rd St., S.W., Winter Haven, FL 33880  
813/293-3147

\*Registration Pending



**par ex**<sup>®</sup>  
PROFESSIONAL PRODUCTS

## ***President's Message***



The Florida Golf Course Superintendent's Association has been very active and productive in 1980. At our most recent board meeting a state logo was adopted and soon will be seen on our stationery and blazers. We also had the opportunity to meet with G.C.S.A.A.'s president, Mel Lucas, and discuss how their plans and philosophies relate to the F.G.C.S.A. Attendance at this board meeting was strong and very encouraging. Your chapter presidents and vice presidents are to be commended for their dedication and outstanding contribution toward strengthening our state association and its chapters.

October will be a busy month for golf course superintendents and their affiliates in the turf industry. The Florida Turf Grass Association conference and show will be held in Gainesville from October 19-22. In accordance with our By-Laws, the Florida Golf Course Superintendent's Association will hold its annual meeting at that time.

The board and I look forward to personally meeting you and discussing our association's objectives. You should make plans now to attend these annual functions and receive their many benefits.

*Tom Hur*

# The Florida Green

The Official Bulletin of the Florida Golf Course Superintendents Association

Florida Green Phone: (305) 793-0069

**TIM HIERS**.....President

*Sun Tree Country Club*

**BILL WAGNER**.....Vice President

*Tequesta Club*

**REED LE FEBVRE**.....Director

*Pines and Palms, Inc.*

**KEVIN DOWLING**.....Secretary-Treasurer

*Atlantis Golf Club*

**GARY MORGAN**.....Director

*Sherwood Country Club*

**JOHN HAYDEN**.....Director

*San Jose Country Club*

**PAUL TURCOTTE**.....Director

*City of Miami*

**LESLIE HIXON**.....Director

*Gator Greek Golf Club*

**CLINTON SMALLRIDGE**.....Director

*Royal Poinciana Golf Club*

## TABLE OF CONTENTS

President's Message.....	3
"Mr. Green Committee Chairman".....	6
Budget Saving Ideas.....	12
Responses To April Editorial.....	16
Interview with Jerry Chessman.....	17
Everglades Chapter Meetings.....	18
The Gator Growls.....	19
Pompano Beach Golf Facility Becomes Computerized.....	24
New Officers South Florida Chapter.....	24
Who In The World Put The Hole There.....	25
Crowfoot Open Huge Success.....	29
Jimmy Blackledge Motivated Turfgrass Research In Florida.....	30
Florida Plows Ahead in 1980.....	33
FCGSA Board Meeting.....	33
Golf Course Development Report.....	36
Please, Don't Call Me Greenskeeper!!.....	37
Editorial.....	38

Cover Photo by Harry McCartha

## ABOUT OUR COVER

Left to right: Tim Heirs, G.C.S. Suntree C.C.; Mel Lucas, president, G.C.S.A.A.; Gilli Flamnio, chairwoman, Member Volunteers, Suntree C.C.; Ken Boozer, golf pro, Suntree C.C.; Harold Stabb, president and general manager, Suntree C.C.

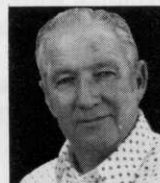
**NOTICE:** All correspondence concerning business matters, circulation, editorial and advertising should be addressed to the Editor, P.O. Box 5958, Lakeworth, Fla. 33461. Opinions expressed by writers in by-lined editorials are not necessarily those of this publication. "The Florida Green" is published quarterly: the 1st of January, April, July, October. Closing date for advertising and copy is 45 days prior to publication. Not copyrighted. Please credit the author and "The Florida Green."



Dan Jones, C.G.C.S., Editor  
*Banyan Golf Club*



Dave Baily  
*Atlantis Country Club*  
Associate Editor



Harry McCartha  
*Henderson & McCartha*  
Photography

### Contributing Editors:

- Hubert E. (Al) Frenette  
*Peachtree G.C., Atlanta, Ga.*
- Fred V. Grau, Ph.D.  
*President, The Musser Foundation*
- Paul R. MacDonald  
*Johns-Manville Corp.*

# OUR BIGGEST ADVANTAGE IS HOW LONG A SINGLE APPLICATION WILL CONTROL CRABGRASS, GOOSEGRASS, BULLGRASS AND SANDBUR.



## ONE WHOLE SEASON.

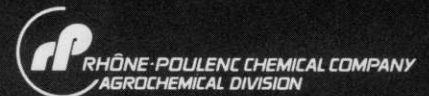
That's right. You get an entire season's control with just one application of Asulox®. Control of your four major problem weeds in Tifway 419 Bermuda grass and St. Augustine grass. Reliable, consistent control that will help produce the kind of turf that reflects most favorably on your management skill.

Asulox is easy to use without drift problems, since it is extremely selective to surrounding vegetation. You apply it postemergence to weeds with regular ground equipment. Use four to five pints per acre in 30 to 50 gallons of water. Be sure to use the higher rate for goosegrass control. It's tough, but not as tough as Asulox.

You may get temporary discoloration following application. But your turf will quickly grow out of it, with no ill effects. Just be sure not to apply above labeled rates, as permanent turf injury may occur. And don't apply Asulox to freshly mowed turf or turf that's under stress.

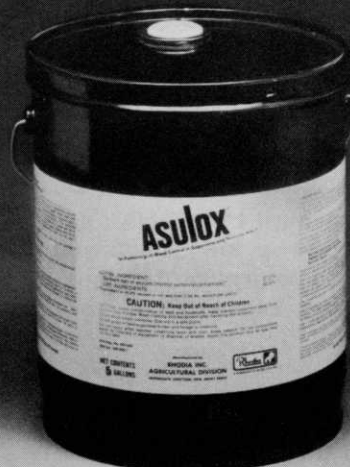
This season, why not simplify and improve your turf weed control program? Spray Asulox. A single application will control crabgrass, goosegrass, bullgrass and sandbur for one whole season.

Rhône-Poulenc Chemical Co. Agrochemical  
Division, Monmouth Junction, New Jersey 08852.



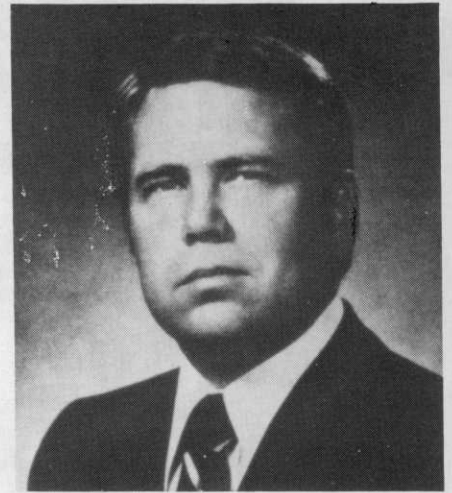
Please read labels carefully, and use only as directed.

Labeled for use in Florida only.



*The once-a-season herbicide.*

# "Mr. Green Committee Chairman"



Paul D. Cato, Jr.

by **PAUL D. CATO, JR.**  
President, Colonial Country Club, Fort Worth, Texas

**F**OR THE LAST three years, I have been green committee chairman at Colonial Country Club, in Fort Worth, Texas, the home of the Colonial National Invitation Tournament. This is a golf-oriented club, with over 40,000 rounds played each year. Golf has been good to Colonial, and the Board feels strongly about the continued improvement of the course. Over the last three years, more than \$400,000 has been spent on golf course improvements, including a new automatic irrigation system and pump station, a new and efficient maintenance building, a new 10,000 square foot putting green, a new design and construction of the par 3, 13th hole, a new 16,000 square foot bentgrass nursery, and all our asphalt cart paths were relocated and replaced with concrete.

In 1977, Paul Cano, our golf course superintendent, retired after a 42-year career at Colonial. Replacing him was very difficult, but during this process I gained tremendous respect for the profession of golf course superintendents. We interviewed several men for the job, and I can truthfully say that every applicant was extremely qualified, proud of his profession, and

interested in improving himself. With this background and experience I do not consider myself an expert, but I have learned just enough to develop some opinions. So the following thoughts are the way I see it as *Mr. Green Committee Chairman*.

Most clubs are judged by their golf course, its layout and condition. Country clubs were created primarily for golf, and members need to understand the importance of their golf course. If it were not for the course, the clubhouse, tennis courts and swimming pool would probably not have been built. It follows that the green committee should be one of the most important and most active in the club. With this understanding, it puts great importance on the selection of a green committee chairman. In my opinion, a chairman should meet the following qualifications:

1. He must be an active golfer (not necessarily a low handicapper) and enough a student of the game to have a working knowledge of the Rules of Golf.

2. He must be a fair, understanding and flexible person who has enough maturity and self discipline to recognize that he is not an agronomist.

3. He must be a man who has easy access to the Board of the club, probably as a member of the Board. This enables the Board to be kept up-to-date and to be in a position to understand and explain the activities on the course to members. An informed Board is easier to sell on budget or the need for additional capital expenditures.

4. He must be a man who has time to give to the job and a great pride in the golf course.

The other committee members should be basically like the chairman. They need to be chosen by the chairman, or at least approved by him. The committee must have very good communications. I recommend a small committee, three people or less, and in many cases only a chairman without a committee. Meetings with the superintendent are held at all times in many places, and this makes getting a large committee together very difficult. The chairman and superintendent should have regular meetings while they inspect the course.

The green committee chairman should help the superintendent with his budget and with policymaking problems. The green committee chair-

man has a good feel for the pulse of the club's thinking and of its financial condition. He should work closely with both operating and capital expenditure budgets. The operating budget should be updated every six months to better relate to the changes constantly occurring on the course. Most of these changes will be in labor, since this makes up about 70 percent of the operating budget.

I feel that the large turnover rate in the labor force is a major problem on most golf courses. Part of the reason for the problem is the low wage scale set up by many clubs. It is increasingly difficult to find good men to work the odd hours, often under less than comfortable conditions. You get what you pay for! It is not good business to put expensive equipment and a valuable golf course in the hands of low-priced, unskilled labor. With the equipment technology in the turf industry improving daily, our golf courses should be able to do more with less people, but it will mean that each workman must be better qualified.

When you have good management, you do not have surprises. This is especially true on your capital expenditures. It is essential to have good records on maintenance equipment and to be realistic about its estimated life. Be certain that your Board knows when your large dollar needs will occur. The green committee chairman and superintendent can hurt their credibility with large emergency needs in capital expenditures.

The green committee chairman and his committee should demand a high degree of maintenance on the golf course. The superintendent is responsible for the manner in which the golf course is maintained. He should not have any doubt about what condition the Board and green committee chairman expect. He must know the standard set down by the Board, and along with this responsibility, he must have authority and complete control over his crew and equipment. The green committee chairman and his committee cannot nit-pick the golf course. They must judge the superintendent and his organization on the com-

plete job. The superintendent and his crew must try to view the course and its condition as the green committee chairman and club members see it.

There must be a close relationship between the green committee chairman and the golf committee chairman, just as there should be a close relationship between the superintendent and the golf professional. Communication and mutual respect is essential or the club will be the loser. The superintendent and the golf professional must pursue the same goal — "The playing condition of the golf course!" I strongly recommend that these two men have regular meetings on the course so that each man can better understand the other's problems. A well-informed golf professional can be a great public relations man for the superintendent. I believe that for such things as hole locations, tee marker location, and width of fairways, the superintendent must have the cooperation of the golf shop for the good of the club.

The superintendent must have a calendar of all scheduled golf events

*The superintendent must have full schedule of events so there are no surprises.*



*(Continued on Page 8)*

at the beginning of each year, and course maintenance needs must be considered when making the calendar of events. For instance, it is bad to find the greens aerified the day before a big club tournament, simply because the superintendent wasn't notified. At times of adverse weather, this line of communication is also very important. I feel that the superintendent should have a complete authority over whether golf carts are to be permitted on the course and when play is to be kept off the course because of freeze or frost. Other closings of the course should be by mutual decision of the superintendent and the golf professional. If they don't agree, then the green committee chairman and the golf committee chairman must step in and do what is best for the club. The green committee chairman and superintendent must never forget that the main reason for the golf course is to accommodate the members.

The green committee chairman and superintendent have a commitment to the club to maintain the philosophy and character of the golf course. All major changes must be approved by the Board. The green committee chairman's job is not to rebuild the course the way he wants it. The green committee chairman and superintendent can and must prevent changes such as: the greens changing shape, loss of hole locations, bunker changes in their depth or shape, uncontrolled tree growth, or changing of green contours. I recommend annual photographs of the golf course so that it does not change in front of our eyes without our noticing it. Hiring a qualified golf course architect is often beneficial in maintaining your philosophy in course character. An architect can also be of great assistance in rebuilding and making major changes when they become necessary.

What does a green committee chairman expect from his superintendent?

The superintendent must have confidence in the green committee chairman and he must be extremely loyal to the chairman. The chairman must never hear of something the superintendent says from another source; it must be said directly to the chairman.

The superintendent must be organized, have the ability to handle men, and be tactful enough to handle members. He must have goals, both long and short range. His standards

for maintenance should be high, with extreme pride in the golf course. He must be a leader of men and must be able to delegate responsibility.

The superintendent, like the green committee chairman, should play golf and be knowledgeable about the Rules of Golf. He must know how to define the hazards correctly and realize the importance of these hazard lines being maintained. He must have ability as a mechanic, and with his work on budget, planning and purchasing, he needs to be a good businessman.

It goes without saying, but he must be well-founded in principles of agronomy. He must keep abreast of new developments in the industry. The green committee chairman can help by making sure the club sends the superintendent to state and local turfgrass conferences, the annual GCSAA International Turfgrass Conference and Show and the USGA Green Section Annual and Regional Meetings. The superintendent then accepts the responsibility to attend all sessions and gain as much knowledge as possible to bring back to the club and his organization.

The superintendent must have an open mind to the fast changes in the industry. He should also have a good nursery of both his green and fairway grasses where he can experiment before gambling with them on the course. The superintendent cannot be afraid to say, "I don't know," or "I was wrong." Excuses, alibis and blaming others will cause the green committee chairman to lose confidence. No superintendent can afford for this to happen. The industry has a lot of specialists who are willing and able to help, such as the USGA or the outstanding universities in our country. A good superintendent will make use of all technical resources available to him.

As *Mr. Green Committee Chairman*, most of the reward comes in your own mind and the pride you have in the changes, or lack of changes on the golf course . . . and in a member saying, "I have never seen the course in finer condition."

---

This address was made at the USGA Green Section Regional Conference at Irvine, Texas, in 1978.



**SOUTHERN MILL CREEK  
PRODUCTS CO., INC.**

**SERVING ALL OF FLORIDA  
Tampa, Miami, Orlando  
Jacksonville**

**Dade  
635-0321**

**Broward  
525-0648**

**Tampa Office  
1-800-282-9115**

# PRIMICID<sup>®</sup>

INSECTICIDE

**...reliable, long-lasting control for even second generation sod webworms and chinch bugs.**

## **Simplify turf and lawn care problems**

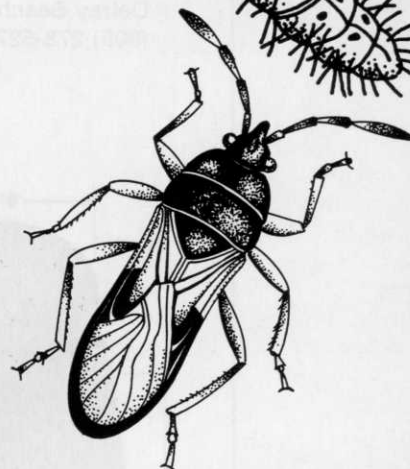
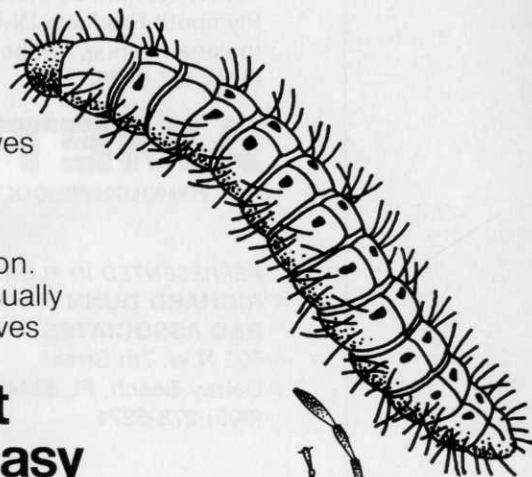
for your customers and for yourself by using Primicid insecticide. It gives effective, dependable, long-lasting control of sod webworms and chinch bugs.

## **Primicid works**

by contact and ingestion. Residual action is so good that one application usually controls two generations of sod webworm and gives lasting control of chinch bugs.

## **Primicid is powerful against these insect pests but it's easy on turf**

and beneficial insects such as earthworms. Use Primicid without damage to grasses such as Bermuda, St. Augustine, blue and fescue grasses. Follow label directions carefully. It's registered in Florida on a "special local need" label for use on turf. Primicid is a product of ICI Americas Inc., Agricultural Chemicals Division, Wilmington, DE 19897. See your Primicid supplier or your ICI Americas representative now.



ICI Americas Inc.



# Control boxes for turf irrigation systems

Plymouth irrigation boxes are made of a strong, tough thermoplastic material especially suitable for underground use. They're lighter in weight, easier to handle and less brittle than the cast iron or concrete boxes. And, the covers feature molded-in green color to blend-in-with rather than stick-out-of your turf. Rectangular boxes have snap locking covers; 10" round boxes have twist lock covers; and 6" round boxes have snap fitting covers. All boxes nest for simplified storage. AMETEK, Plymouth Products Division, 502 Indiana Avenue, Sheboygan, WI 53081. (414) 457-9435.

**AMETEK**  
PLYMOUTH PRODUCTS DIVISION

REPRESENTED IN FLORIDA BY:  
**RICHARD DUNN  
R&D ASSOCIATES**  
502 N.W. 7th Street  
Delray Beach, FL 33444  
(305) 278-5271

