



The Florida Green

Spring 2004



Number 18
Lemon Bay Golf Club
Englewood
Photo by Daniel Zelazek



President Greg Pheneger
 Johns Island Club
 115 Silver Moss Dr.
 Vero Beach, FL 32963
 (772) 231-1700

Vice President Joe Pantaleo
 Indian Creek C.C.
 52 Indian Creek Drive
 Indian Creek, FL 33154
 (305) 866-7224

Secretary/Treasurer Craig Weyandt
 The Moorings Club
 100 Harbour Drive
 Vero Beach, FL 33433
 (561) 231-4996

Past President David Court, CGCS
 Boca Lago Country Club
 8665 Juego Way
 Boca Raton, FL 33433
 (561) 482-5017

Directors

Calusa Ken Shakeshaft
 Six Lakes CC
 (239) 995-0595

Central Florida Chris Cartin
 Deltona Hills CC
 (386) 789-3911

Coastal Plains Jeff Heggen
 Hilaman Park GC
 (850) 891-3936

Everglades Matt Taylor
 Royal Poinciana Club
 (239) 261-4987

North Florida Clayton Estes, CGCS
 San Jose CC
 (904) 733-3464

Palm Beach Steve Bernard
 Adios GC
 (954) 421-6207

Ridge Jeff Brown
 Lake Region Y&CC
 (863) 324-4578

Seven Rivers Buddy Keene
 Gainesville G&CC
 (352) 376-8174

South Florida Jim Goins, CGCS
 Hollybrook G&TC
 (954) 433-1725

Sun Coast Michael McCulloch
 Jacaranda West CC
 (941) 497-1534

Treasure Coast Ralph Dain
 Sailfish Point GC
 (772) 225-1200

West Coast Chris Ansley
 Quail Hollow
 (813) 469-9932

Staff

Association Manager Marie Roberts
 1760 NW Pine Lake Dr.
 Stuart, FL 34994
 Phone: Days (772) 692-9349
 (800) 732-6053 (Florida WATS)
 (772) 692-9654 (Fax)
 fgcsa123@bellsouth.net (E-mail)



34



14



55

14

SPOTLIGHT: APOLOGY BRINGS DOWN THE HOUSE

Sportscaster Jim Nantz brought down the house at the GCSAA Conference with a pledge to do a better job of telling the golf maintenance story during golf broadcasts.

16

COVER STORY: COURSE SCORES A COUPLE OF EAGLES

Having an eight-acre eagle preserve in the middle of your golf course is like hanging out a sign saying, "Hey Look At Me!" and the eagle watchers at Lemon Bay GC in Englewood do watch. The property was a lemon grove in the 1890s.

30

HANDS ON: ROUGHING IT

According to GCSAA's figures for land use at an 18-hole course, roughs, woods and water hazards make up about 70 percent of a course's total area that is "under maintenance."

36

INDUSTRY: HATS OFF TO SUPER SAVERS!

Bill Stine, president of the Florida Golf Course Owners Association, praises superintendents who do their homework before asking him to invest in new equipment. Do a cost analysis, investigate options and get bids before you ask him to buy you a new toy, he says.

44

OFFICIAL BUSINESS: LAWMAKERS STILL DON'T GET IT

On a visit to the Capitol during "Committee Week," FGCSA officials discovered that legislators understand that golf is "out there," but they didn't always understand how our industry fits into the big picture. Or simply that golf in and of itself is not on their radar screens as having issues that need addressing.

52

AFTERWORDS: SHOW AND TELL

Joel Jackson begins a series of tips on how to improve your photos; Mark Jarrell suggests that Florida should not replace the foundation of its economy; Jim Walker connects the dots between better turf conditions today and safer working environments for golf course employees; Joel Jackson plays a round of birdies and bogeys.

About the use of trade names: The use of trade names in this magazine is solely for the purpose of providing specific information and does not imply endorsement of the products named nor discrimination against similar unnamed products. It is the responsibility of the user to determine that product use is consistent with the directions on the label.

The Florida Green

SPRING 2004

Published four times a year:
On the 25th of January, April, July and October

Editor Joel Jackson, CGCS

FGCSA Director of
Communications
Address Florida Green business to:
6780 Tamarind Circle
Orlando, FL 32819
(407) 248-1971 Florida Green voice/fax
E-mail address: FLGm@aol.com

Assistant Editor Scott Bell

Red Stick GC
P.O. Box 700107
Wabasso, FL 32970
(772) 564-7206 (561) 564-7207 Fax

Publications Chairman Joe Pantaleo

Indian Creek C.C.
52 Indian Creek Drive
Indian Creek, FL 33154
(305) 866-7224

Business Manager Michael Perham, CGCS

Jonathan's Landing
16823 Captain Kirle Drive
Jupiter, FL 33477
(561) 748-9799

Editor Emeritus Dan Jones, CGCS

Oviedo

COPYRIGHT NOTICE: Copyright 2004, Florida Golf Course Superintendents Association. All rights reserved. May not be reproduced in whole or in part without written permission of the FGCSA. **EXCEPTION:** Official publications of all golf course superintendent associations affiliated with the Golf Course Superintendents Association of America are welcome to use any material contained herein provided they give credit and copyright notice.

SUBSCRIPTIONS: \$20 for four issues. Contact the FGCSA office.

ADVERTISING: For rates and information, contact the FGCSA office at 800-732-6053

EDITORIAL: All inquiries should be directed to the editor, Joel Jackson, CGCS. Unsolicited manuscripts and photographs cannot be returned.

CALL FOR ARTICLES

Hands on Topics: Share your best practices and tips for these upcoming topics. Photographs or slides are encouraged. Digital images that are 5 inches wide at 300 dpi or greater accepted.

Summer 2004 - Aquatic Management: From Vegetation to Water Quality

Fall 2004 - Traffic Control Programs and Strategies

Winter 2005 - Your Best In-House Projects... and How You Did Them.

Please submit articles via email if possible. Attached articles should be saved in Microsoft Word or, if you use another word processor save it as a Text file before attaching or you may just copy and paste it into the email text box. Try to limit articles to 1500 words or less. The Florida Green pays \$100 per page and \$50 for 1-3 pictures.

Digital photos must be a minimum of 5 inches wide at 300 dpi for publication-quality reproduction.

Do not write on the back of prints. Attach a Post-it note with ID information. All slides and photographs should include identification of persons in the picture and the name of the photographer.

Contact Joel D. Jackson, editor for more information. Mail: 6780 Tamarind Circle, Orlando, FL 32819. Phone or fax: 407-248-1971. E-mail: flgm@aol.com.

ADVERTISER INDEX

Aerification Plus	34	Nu-Gro Technologies	13
Almar Turf Supply	6	Nucrane Machinery	Back Cover
Aquatrols	3	Parkway Research	46
Brannack Turf Care	38	Pike Creek Turf Farms	10
Broyhill	31	Powell Golf Design	37
Classic Green	10	Ragan Technical	37
Cleary Family of Products	32	Regal Chemical Co.	53
Coastal Equipment Systems, Inc.	27	Ridge GCSA	7
Country Club Services	5	Seaisle One	49
Disbrow Enterprises	43	Sod Solutions	35
Dow AgroSciences	47	South Florida Grassing	11
Emerald Tree	42	Spread-Rite	21
ER Jahna Industries	8	Syngenta	23
Florida GCSA	15	Tampa Bay Turf	9
Golf Agronomics Supply	36	Tee-to-Green Turf Products	40
Gowan Company	41	TifSport Growers Association	25
Green Technologies	21	Tifton Physical Lab	50
Green-Way	14	TMI Turf Merchants	Inside Back Cover
Harrell's	51	Tom Burrows Turfgrass Service	18
Howard Fertilizer & Chemical Co.	1	Toro Dealers of Florida	28
Kubota Tractor Corp.	19	Turf Technologies	6
Laserturf Leveling	18	Turflite	33
Lesco, Inc	39	Upstart Products	21
North Georgia Turf	38	Valent USA	45

CONTRIBUTORS TO THIS ISSUE:

Beckner. Brian Beckner is superintendent, LaPlaya Golf Club; 239-597-2991; fax 239-597-2291; sbbeckner@aol.com

Berg. Renze Berg is superintendent, Bradenton CC; 941-792-2943; fax 941-794-5983

Calhoun. Chuck Calhoun is superintendent, John's Island Club South Course; 772-231-1700; fax 772-231-8600; snakeye86@msn.com

Cowan. Tom Cowan is employed by Wesco Turf supply, Inc.; 904-783-0500, fax 904-783-3835; email tom.cowan@wtsupply.com.

Davis. Darren Davis is director of golf operations, Olde Florida GC; 941-353-4441; fax 941-353-5947; darrenjuddavis@aol.com

Foy. John Foy is director, Florida Region, USGA Green Section; 561-546-2620; fax 561-546-4653 ; jfoy@usga.org

Jackson. Joel Jackson, CGCS is director of communications, Florida Golf Course Superintendents Association; 407-248-1971; fax 407-248-1971; flgrn@aol.com

Jarrell. Mark Jarrell, CGCS is superintendent, Palm Beach National GC; 561-965-0046; fax 561-967-0459; markjarrrl@aol.com

Keene. Buddy Keene is superintendent, Gainesville G&CC; 352-376-8174; fax 352-376-3371; ckeeneii@aol.com

Pheneger. Greg Pheneger is golf course manager, Johns Island Club; 772-231-1700; fax 772-231-8600; gregp@johnsislandclub.org

Stine. Bill Stine is CEO, Golf Enterprises and a director, National Golf Course Owners Association; 407-344-4004; fax 407-344-9316

Walker. Jim Walker is superintendent, Greynolds Park Golf Course; 305-945-3425; fax 305-945-3428

WHEN
QUALITY
MATTERS,

EXPERIENCE
IS THE
DIFFERENCE.



When it comes to your turf, quality matters. And at Howard Fertilizer, we handpicked the industry's top experts to enable us to provide the highest quality products and first-class service to our clients. Our team of committed experts will provide you with top quality, free-flowing specialty mixes, coupled with on-time delivery to your door.

Call Howard Fertilizer today at 352-429-0024 to learn how we can keep your turf strong and healthy-looking all year long. Because quality matters.

H O W A R D
fertilizer & chemical
| company, inc. |



Groveland Division, Telephone 352-429-0024
Toll Free 888-668-5868
www.howardfertilizer.com

Springing Into Action

By Greg Pheneger

A long, hard winter has passed with many memories. I always sit down in the early spring to examine the operations in my department. Once I have checked my facilities it is time to get out and see others and determine how they survived our “busy” season.

Congratulations to Mike Perham who is the 2003

Distinguished Service Award winner. Mike is currently the superintendent at Jonathan's Landing in Jupiter. Mike has loyally served the state association over the years and continues to work for the state as the Florida Green business manager and chairman of the state reception every year. Congratulations Mike

for a well deserved award.

At our winter board meeting the board approved the retention of a reputable financial management company to manage our reserve funds. Companies used and recommended by several allied industry associations (FFAA, FFVA and Citrus Mutual) were interviewed. With professional management, our money can be invested in low-risk, accessible funds that will earn more interest than our current simple bank certificates of deposit. A key part of this action will be to draft a board-approved investment

policy that will dictate the strategy and percentages of recommended investments. The policy will also create investment discipline and protect our funds from wild market swings in certain sectors. No change in allocation or investments can be made with the approval of the full board. The financial advisors will report to the board at each quarterly board meeting.

The objectives of our investment policy will be to preserve capital liquidity and optimize the investment return within the constraints of the investment policy. Preserving capital is very obvious in that we do not want to lose money. Nobody wants to lose money. By saying we will “preserve capital,” we are stating that we will be conservative in our investing. We want all of our assets to be available to us. Last but not least, we want to make money so operating funds do not have to be used to help maintain the reserve account at proper levels.

The Poa Annu Classic at the Naples Beach and Golf Club is just around the corner (May 13-15). The

Everglades Chapter always puts on a wonderful family event. The setting offers events for the whole family while the spouse is working hard in the classroom and toiling on the golf course. If you have never made the Poa you have missed out on one of the highlights of the year.

The weekend begins on Thursday afternoon with our FGCSA spring board meeting. All members of the association are invited to attend the board meeting. Many Past presidents have attended the spring board meeting and have been very helpful. Results of the members-needs survey should be tabulated by that time for review. I hope the results of the survey will lead future boards in the direction that will best serve our membership. Feedback from membership,

even negative, is needed for an association to function effectively.

On Thursday evening the board will host the Past President's Dinner. All past Presidents are invited for dinner with the current board. This is only the second year for the dinner and last year I had the pleasure of talking with past Presidents Scott Bell and Darren Davis. That conversation helped generate ideas for this year's agenda.

I strongly believe that discussing actions and decisions from previous boards can help future boards to make intelligent decisions. Ideas from previous boards can be examined to determine what worked and what didn't and why. Ideas and projects discounted before do not necessarily mean that they should be discounted now. Times change and good ideas should be reexamined for relevance. I look forward to another enjoyable evening and hope I can soak up even more information.

Friday the formal educational aspect of the Poa event swings into action with a GCSAA Superintendent Leadership Series

The objectives of our investment policy will be to preserve capital liquidity and optimize the investment return within the constraints of the investment policy... We want all of our assets to be available to us. Last but not least, we want to make money so operating funds do not have to be used to help maintain the reserve account at proper levels.

seminar secured by Buddy Keene, our education chairman. This year's speaker is Pat Schwab and her topic is “Dealing with Jerks.” I have not had the pleasure of attending one of Pat's seminars but those who have speak very highly of the presentation.

We all have our “war stories” of dealing with people who might fit the “jerk” description. I know I have often wondered if I could have handled things better. Hopefully, after taking this class, I will come away better equipped to handle a “jerk” should he appear during any given day.

Friday afternoon and Saturday morning bring golf and camaraderie. These two tournaments fill up very quickly and sandbaggers are lining up to take home the trophies. These days can also be used to play on the beach or just relax by the pool if you so desire. More relaxation and networking is in store for all on Saturday evening at the Luau where adults can have as much fun as the kids as they nosh on the traditional roasted pig and other culinary delectables.


On May 24, the Treasure Coast Blue Pearl Tournament is scheduled back at its original home, Loblolly Pines in Hobe Sound. The proceeds are earmarked for area youth and environmental organizations in an attempt to help our Blue Pearl, the planet Earth.

After a long winter hibernation at your course, come on out and live a little.

PRESIDENT'S MESSAGE



Greg Pheneger



AQUATROLS® Announces **Recent Distributor Changes**

The quality products that you depend on are now available from Howard Fertilizer and ProSource One – the sole distributors of Aquatrols products in Florida.

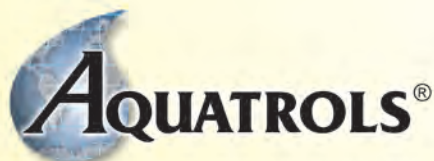


H O W A R D
fertilizer & chemical
| company, inc.

888-668-5868 • www.howardfertilizer.com



877-350-3999 • www.prosourceone.com



800-257-7797 • www.aquatrols.com

**Teaming up
to make
your job
easier.**

Contact your local Howard Fertilizer or ProSource One representative for more information on Aquatrols' line of products.

Chapter Round Up Education, Golf, Fundraisers Top Winter Events

Calusa

USGA Agronomist Todd Lowe was the speaker at our January meeting at the Coral Oaks GC hosted

their facility to make it more economical and environmentally friendly. The occasion was the 16th Annual Central Florida/FTGA Turf Research Tournament. Host superintendent Stuart Leventhal, CGCS reported that not counting this event's proceeds, the tournament had contributed over \$60,000 to the FTGA. After a sumptuous buffet



FGCSA Past President David Court, CGCS, left, presented Mike Perham, CGCS with his FGCSA Presidents Award at the FGCSA Reception in San Diego. Photo by Joel Jackson.

by Joe Boe. Todd's topic was "Cultural Practices and Overseeding." We didn't have a meeting in February due to the GCSAA Conference. Art McCoy, GCS will host our March "Yellow Ball" golf outing at the Deep Creek G.C. in Port Charlotte.

Central Florida

Guest speaker Tim Hiers' talk on the Future of Golf gave the 60-person audience at the Interlachen C.C. in Winter Park a take-home list of improvements that any club can make to

lunch, the 30 two-man teams made up of a superintendent and either golf pro, general manager or other club official battled stormy skies and one rain shower and the always-testy tournament set up, but the round was completed.

The Winter Pines GC team of Joe Ondo, CGCS and head pro John Pohira took low gross honors in the First Flight with a 67. Last year's winners Pat Murphy and Tom Dirschel from Orlando's Northshore G.C. took the low net prize. The Second Flight prizes went to Barry Shuman and Tony



The Ridge Chapter has founded an annual \$1,000 turf student scholarship at Florida Southern College in the name of Jack Harrell, Sr. Chapter officers shown here, from left: Clay Marshall, Roy Wilshire, Jeff Brown, Alan Puckett and Mark Hopkins. Photo by Joel Jackson.



Host Superintendent Roy Wilshire, CGCS, left, congratulates Joe Ondo, CGCS for his low round of 77 at the Jack Harrell, Sr. Memorial Invitational. Photo by Joel Jackson.



Jack Harrell, Jr., left, receives an original pencil portrait of his father drawn by David Pursell. Tim Orton presented the picture on behalf of Pursell Industries. Photo by Joel Jackson.

Johnson (low gross) of the Timacuan C.C. in Longwood and host Stu Leventhal and his GM Tom Powell took low net. In the Third Flight Gene Stys and John Raycroft from the Indian River C.C. won low gross and John Kress and Mike Dunnington from the Alaqua C.C. took low net honors.

Bay Hill Superintendent John Anderson has the course ready for the Bay Hill Invitational PGA tour event. Meanwhile chapter members are eagerly awaiting the chance to "Hike the Hill" inside the tournament ropes as spotters for NBC Sports as the Florida swing of the PGA Tour continues.

Everglades

The FTGA Southwest Florida Regional Seminar in conjunction with EGCSA had more than 200 golf course and landscape attendees at the January 22nd TECO Arena event. Congratulations to the following mem-

bers: Jason Brod, Raptor Bay Golf Club, Bonita Springs for being recognized as a Merit Winner by GCSAA for the 2004 Environmental Leaders in Golf Awards and Greg Maze, CGCS and Twin Eagles Golf & CC for once again hosting the ACE Group Classic Champions Tour Event in early February. Congratulations are also in order for Hal Akins, Bonita Bay Club and Tim Larson, Stonebridge G.C. for recently achieving Certified Golf Course Superintendent status.

The chapter is hosting a sunset cruise aboard the "Naples Princess" in March. Thanks to our generous event sponsors, all guests attend the event at no cost and enjoy a beautiful social atmosphere along the Naples waterways. Our Annual Spring Symposium is scheduled for April 8 at the Naples Beach & Golf Club in Naples. Guest speakers from around

the country will be presenting at the event as well as two of Southwest Florida's leading superintendents, Mark Black, CGCS, and Darren Davis.

North Florida

March will be busy for us as we hold our 12th Annual Mike Richards Memorial Tournament hosted by Greg Tharp at the Jacksonville G&CC. The proceeds from this event, also supported by the family of PGA Tour agronomist Alan McCurrach, helps to fund scholarships for turf students each year. A week after that event several of our chapter members will get to slip inside the ropes at the TPC Championship and work with NBC Sports as spotters for the TV broadcast. Superintendent Fred Klauk and his staff do an outstanding job of preparing the PGA Tour's home course for this "fifth major" each year.

Palm Beach

Mike Perham, CGCS was presented his Presidents Award for Lifetime Service during the FGCSA Reception in San Diego. Congratulations and thanks for your service to our associations. Bob Randquist, CGCS of the Boca Rio C.C. served as chairman of a "Current Issues in Golf" Forum at the GCSAA Conference in San Diego. As the PGA Tour moves north from Miami, Superintendent Tad Altman is getting his Mirasol Club ready for their second Honda Classic and the chapter is ready to pitch in once again as spotters for NBC Sports coverage of the event.

Ridge

Joe Ondo, CGCS won our Jack Harrell, Sr. Memorial Ridge Invitational at the Grasslands C.C. in Lakeland. Thanks to host superintendent Roy Wilshire, CGCS for a job well done. The course should have been called the Glasslands, since the greens putted like glass. During the awards dinner after the tournament, Tim Orton, representing David

Pursell of Pursell Technologies, presented Jack Harrell, Jr. with an original pencil sketch of his father Jack Harrell, Sr. in honor of all that "Senior" stood for as a family, community and industry leader. Our chapter also has founded a scholarship in Mr. Harrell's name for turf students attending Florida Southern College in Lakeland.

Seven Rivers

Congratulations to John Cunningham, CGCS, at Black Diamond Ranch and Barry Greenwalt, CGCS of One Source at The Villages. Both gentlemen just became certified recently. By the time you read this, we will have hosted another annual Jeff Hayden Envirotron Classic at the World Woods G.C. where we hope to have another successful event for raising funds for the University of Florida's turf research programs.

South Florida

Congratulations to Carlos McKeon, the host superintendent for the Royal Caribbean PGA Champions Tour event held in January at his Key Biscayne course. As Sam Urso, GCS at Doral prepares for the 2004 Ford Championship at Doral in March, our chapter has been asked to provide 18 spotters and scorers for four days of the NBC telecast of the PGA Tour's Doral Tournament. Superintendents Jim and Suzi Walker have volunteered to coordinate with the network production crew.

We are looking forward to joining with UF/IFAS to host the 17th Annual South Florida Turf Expo at the Ft. Lauderdale Research Center on March 18th. The event has been approved for .35 GCSAA education points and consists of research updates, equipment demonstrations and a mini trade show and turf education workshops. The funds raised at this event are used to support a technician to maintain the turf plots to actual golf course conditions to make the research more meaningful in the real world.



Golf Course Renovation & Construction

- **EXCAVATION AND GRADING**
- **DRAINAGE**
- **GREENS CONSTRUCTION**
- **LASER GRADING**
- **BUNKER CONSTRUCTION**
- **ATHLETIC FIELD CONSTRUCTION**
- **GRASSING SERVICES**
- **EQUESTRIAN CENTERS**

William H. Wright, CGCS
PRESIDENT

Robert Farina
VICE-PRESIDENT

749 NE 70th Street • Boca Raton, FL 33487

(561) 862-0445

Fax (561) 862-0447

countryclubsvcs@aol.com

Suncoast

Congratulations to recently certified Mark Johnson, CGCS at the TPC at Prestancia. Thanks to Gary Smither and the Misty Creek CC for hosting the 22nd Annual Suncoast Scramble. The purpose of this event is to inform, educate and promote a strong professional bond among the members of the golf industry in our area. The tournament format is a four-man scramble. Each team is made up of a superintendent, golf professional, club manager or official and a supplier.

Treasure Coast

Great golf by our chapter defeated "The Boys from Palm Beach" at our December joint-chapter meeting at Rob Kloska's Jupiter Island Club. Thanks for hosting this event for the third time in the past five years. We brought home the Cavanaugh & Wagner Trophy in the Ryder-Cup-format match. In January Dr. Bob

Carrow from UGA was our speaker on "Nutrient Uptake From Root Absorption." Chapter President Roy McDonald hosted the meeting at the Hobe Sound GC. We will have a golf outing in March and then gear up for another joint meeting with the Palm Beach GCSA on April 12th with our annual meeting of superintendents, pros and managers at the PGA Golf Club. And our big fundraiser, The Blue Pearl, will be held at Loblolly Pines May 24.

West Coast

Congratulations to Tom DeChant at Hunters Green CC for passing the requirements to become a Certified Golf Course Superintendent.

Florida GCSA

Florida's golf team of Bob Harper, Seth Strickland, Steve Bernard, and Joe Pantaleo placed second at the GCSAA Golf Championship in San Diego. The

guys report that reading the breaks and putting on the greens at Maderas and Del Mar National was their undoing. Wait til next year!

Joel Jackson, CGCS

Retired was a presenter at a "Current Issues in Golf" session in San Diego titled "Proactive Approaches to Dealing with Drought." The panel presentation dealt not only with turf stresses but also how to work with regulators and legislators during water shortages and restrictions.

FGCSA-sponsored

research projects at the University of Florida by Dr. Billy Crow, nematologist and Dr. Lawrence Datnoff, plant pathologist received matching funds from the GCSAA's Environmental Institute for Golf. The announcement was made at the conference and show in San Diego.

Check out the Official Business section for a report on FGCSA's 2004 Capitol Hill visit with state legislators.


**2003 Presidents Award
North Florida
Honors Clayton
Estes for Service**

By Tom Cowan

The recipient of the President's Award for 2003 from the North Florida GCSA is Clayton Estes, CGCS. Estes is a past president of the North Florida Chapter and is currently serving as external vice president rep-



Clayton Estes, North Florida GCSA Presidents Award for 2003.



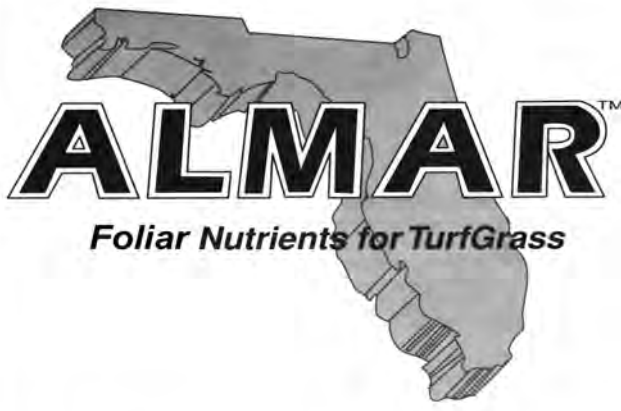
HOWARD FERTILIZER & CHEMICAL

FLORATINE PRODUCTS

SALES & SERVICE

Bryan Riddle	561-310-8482
Craig Perkins	561-262-8794
Dave Price	561-379-8403
Erik Thor	954-383-5638
JB Branstrom	561-723-7048

P.O. Box 7918 · Jupiter, FL 33468
Ph: 866-575-TURF(8873) · Fax: 561-575-2177



ALMAR™
Foliar Nutrients for TurfGrass

THE POWER of Foliar Nutrition ...
Hyperspectral Turf Enhancer Program

(800) 340-3888

P. O. BOX 291370, TAMPA, FL 33687
 FAX (813) 988-0329



Thank you sponsors for making this a memorable event honoring Mr. Harrell.

Ridge Runner

Coastal Equipment Specialty Products
Sales & Service (Chemical
Containers, Hidden Acres Nursery,
GMS Landscaping)

Syngenta

Florida Turf Support – Floratine

Lesco

Verdicon

Highland Golf

Harrell's Fertilizer

Golf Ventures

Wesco Turf Supply

Golf Agronomics Supply & Handling

Southeast Partners

Calcium Silicate/Liquid Ag

Quality Grassing

Bayer Environmental Science

All About Signs & Service Inc.

E-Z Go

Dow Agro Science

Cricket Stomper

Lewis Equipment

Go-For Supply

ESD Waste 2 Water

Proplus Golf Services, Inc.

Florida Potting Soils

Pinestraw of South Florida

Central Florida Soil Lab

Growers Fertilizer

E. R. Jahna, Inc.'

Monsanto

Florida Mulch Express

Aerification Plus/Almar

Pennington Seed

Snowman

Du Cor International

Everglades GCSA



representing the NFGCSA on the Florida GCSA board of directors. Over the years he has donated many volunteer hours on behalf his local chapter.

If you have ever had the pleasure of meeting Estes, you'll quickly be put at ease by his broad smile, slow-talking, easy-going demeanor. It is his genuine concern for others that has put him at the top of the list with many of his professional peers. He is a loyal and faithful friend to many.

As an employer, Estes takes the time to get to know each of his employees. He is very visible to his club members at San Jose Club, where he has served as superintendent for 24 years. He is an active church member, and currently an elder at the Lakewood Presbyterian Church.

Husband to Joanne and father to Jimmy, Clayton has always been a dedicated family man. Jimmy is a former member of the Army's 82nd Airborne and soon to be fire-

fighter/EMT in Tampa. He was scheduled to be married in March, as the Florida Green went to press.

You might say that the primary reason for his selection as the recipient of the President's Award is his strong sense of commitment to his community. Estes was instrumental in establishing the annual "Keeper of the Green Award" that honors a member of the North Florida turf community at the Mike Richards Memorial Tournament held each spring.

He was also one of the organizers of the annual past presidents' golf outing and dinner. He has hosted this event every year since its inception, and this past Christmas he also hosted the chapter's annual Christmas tournament, which was dedicated in honor of one of his veteran crew members Scott Strickland. Scott died tragically in an automobile accident and the chapter made the event a fundraiser for a college scholarship for Scott's son, Brian.

In an age when every eye is turned towards our nation's President and every spoken word and action is reported and analyzed - one's individual integrity is paramount to the day-to-day operation of our country. Because of his enduring commitment to the community which he serves every day, and the unselfish manner in which he does it, the members of the North Florida GCSA are proud to honor Clayton Estes for his devotion to family, friends, profession and community.

**2003 Presidents Award
Suncoast Founder
Jim Svabek Retires
with Honors**

By Renze Berg

There is so much to say about Jim Svabek. After serving as the president of the West Coast

GCSA, he helped found the Suncoast Golf Course Superintendents Association in 1976. He is a past president and the only newsletter editor we have ever had. Svabek was the superintendent at the Bradenton C.C. from 1967 until his retirement in October. He has probably hosted more meetings and events such as our annual Superintendent/Vendor Day than any other Suncoast member.

Jim has been a great mentor for me over the past six years. He has taught me everything I know about being a superintendent. He has also been an inspiration to me in life and has been the type of superintendent I am hoping to become. I know Svabek will stay busy, because he can't sit still for too long. That's why he's working part-time for Bob Gwodz at the Sara Bay C.C. where he can continue to share his knowledge with others.

We are going to miss Jim



Your Sand Man

- Trap Sand • Top Dressing Sand
- Greens Mix • Green Divot Sand

All Sands meet U.S.G.A. Specs

E. R. JAHNA INDUSTRIES, Inc.

Lake Wales, FL 33859-0840 • (863) 676-9431

the product everyone
is talking about

ENLIVEN



reduce thatch and
unlock soil nutrients

A unique blend of amino acids and 18 beneficial microorganisms, **ENLIVEN SOIL TREAT** works as an antagonist against pathogenic bacteria and fungi that may be present in native soils.

Applied as a foliar spray Enliven reduces thatch, helps unlock tied up nutrients and assists in nutrient uptake.

While many products containing amino acids and microorganisms lose their effectiveness over time, **ENLIVEN SOIL TREAT** was developed to withstand the heat and light of storage. Microorganism are also know to cannibalize each other, thus destroying the effectiveness of the product. **ENLIVEN SOIL TREAT'S** special blend of microorganisms were specifically designed to work together for you and your greens.

- **SPRING GREEN-UP**
- **SUMMER STRESS MANAGEMENT**
- **OVER SEEDING**
- **GROW-IN/RENOVATIONS/SPRIGGING**
- **PHYSICAL DAMAGE RECOVERY**

SOIL PROGRAM (PER ACRE):

- 1 lb. Enliven
- 1 qt. Affinity
- 2 gal. Comp Verde CA Complex 9-00-12
- 1 gal. 0-0-27 K Carb.
- 1 gal. Carbon Source

"Using Tampa Bay Turf's soil program we've been able to keep our fairy ring under control."

RICHARD GREEN – Fountain Country Club

TAMPA BAY TURF
The Turf Specialist

7162 123rd Circle N. • Largo, FL 33773
(800) 229-1981

The specific species include Actinomycetes, Ectomycorrhizae, Endomycorrhizae, Aspergillum, Bacillus Subtillus, Bacillus Cereus, Bacillus Thuringiensis, Lactobacillus, Trichoderma, and yeast extracts.

Tom Phillips
(561) 719-6265

Carl Bronson
(727) 638-5858

Jim Lawson
(239) 633-6398

Frank Cook
(727) 235-3637

Terry Brawley
(727) 638-3481



On the occasion of his retirement, Jim Svabek (center) received a 2003 FGCSA Presidents Award for Lifetime Service from Suncoast Past President John VanVranken, left, and President Bob Gwodz at the annual Superintendent/Vendor Meeting held at the Bradenton Country Club

Svabek in our day-to-day routine, but we will see him from time to time since he lives across the street from our golf course. Jim, enjoy yourself and have a great retirement. This 2003 President's Award is just our way of saying thanks again for more than three decades of service to your local chapters and your profession.

Richards/MacCurrach Students, First Tee, ACSP All Benefit from Memorial

The North Florida Chapter held another successful Mike Richards/Alan MacCurrach Memorial Tournament at the Jacksonville Golf



From left, North Florida GCSA President Andy MacGuire with scholarship winners Roger Hale and Tim Lyons. Photo by Joel Jackson.

& Country Club in March. Host Superintendent Greg Tharp and staff had the greens rolling tournament speed and the blooming azaleas made for a Masters-like feeling.

This year Lake City students Roger Hale and Tim Lyons each picked up a \$2,000 scholarship to help with their education expenses. Roger is working at The Slammer and The

Producers of Quality Turfgrasses
for Golf Courses and Athletic Fields



Producers and Installers of Fumigated Georgia Certified Bermudagrasses

- Tifway
- Tifdwarf
- TifSport
- TifEagle
- Meyer Zoysia
- Paspalum
- Centipede Sod/Seed

Pike Creek Turf, Inc.

427 Pike Creek Turf Circle, Adel, GA 31620

1-800-232-7453

www.pikecreekturf.com

CLASSIC GREENS, INC.



Celebrating our 18th year of serving the turf industry with quality products.

Our Classic Dwarf remains genetically pure, maintains good color and vigor at close mowing heights and Superintendents enjoy the ease of maintenance.

Classic Dwarf – Tifway (T-419) - Floratex

Golf Course / Athletic Field Grassing and Renovations
Phil Horn, President
1007 NW 143rd Street
Newberry, FL 32669

Office (352) 332-6318
Mobile (352) 284-8175



Super volunteer Paul Hamrick, left, is presented with the 2004 Lifetime Achievement Award by Jay McCord. Photo by Joel Jackson.

Squire course in St. Augustine and will graduate this May. Tim works at Marsh Landing and is a second-year student.

The NFGCSA also donated funds to the Audubon Cooperative Sanctuary Program and to the First Tee Program of St. Johns County. First Tee

Coordinator Elliot Levercombe and one of the First Tee participants, Andrew Taylor, were on hand to receive the donation. Young Andrew gave a poignant thank you speech highlighting what the First Tee has meant to him and the others in the pro-



At the podium, 13-year-old Andrew Taylor tells the audience how important the First Tee program is in his life. Looking on: Andy MacGuire, NFGCSA president, left, and Elliot Levercombe, First Tee coordinator. Photo by Joel Jackson.

gram. He especially cited the mentoring and positive influence the program has had on his education and outlook on life.

Long-time NFGCSA member and super volunteer, Paul

Hamrick, was presented with the Alan MacCarrach Lifetime Achievement Award for his consistent and persistent service to the chapter, as he jumped in and helped to run so many of the association's events.

South Florida Grassing, Inc

Over 35 Years in the Grassing Industry

TifSport

SeaIsle
Certified Seashore Paspalum

Sod, Sprigs and Rolls available

- We provide reworking and planting services for fairways, tees and greens
- Our grass is grown in Hobe Sound on gassed, sand-based soil
- Hydro-mulching, grassing and mulching also available

Tifway 419

TifEagle

Tifdwarf



Certified Producer

Southern Seed
Certification Association

(772) 546-4191

www.southfloridagrassing.com

800-483-4279



This was my view every day on the shuttle bus from my hotel on Shelter Island to the convention center. We saw every type of vessel in the bay: yachts, sailboats, tuna boats, freighters, cruise ships and aircraft carriers.

Apology From Sportscaster Brings Down the House



The newly expanded convention center is to the left. The towering palms and bougainvillea bushes welcomed us to downtown San Diego across the street.



From left: IGM's Greg Plotner and Scott Zakany presented GCSAA CEO Steve Mona with a check for \$7,500 for the Environmental Institute for Golf. The money was the proceeds from the 2003 IGM Hole-in-One Shoot Out.

GCSAA's 75th International Golf Course Conference & Show in San Diego

This was perhaps the most idyllic setting the conference and show

has ever had. The weather was perfect. The harbor views were spectacular. The location and transportation was flawless and there was even a PGA Tour event going on at the same time to visit if you could find a spare moment in the jam-packed week of activities.

The weeklong schedule of activities concluded with the presentation of the association's highest honor, the Old Tom Morris Award, to highly regarded golf-course architect Rees Jones. But the real surprise was at the

In addition, Mark J. Woodward, certified golf course superintendent at Dobson Ranch and Riverview golf courses in Mesa, Ariz., was elected GCSAA president. Overall attendance for the Conference and Show was 19,317, up 1,153 from last year's total of 18,164 in Atlanta. There were approximately 6,200 qualified buyers (those who make purchase decisions at a golf facility), up from the 6,045 in Atlanta. Education seminar attendance reached 6,780, again surpassing the 6,295 figure of last year. A total of 684 exhibitors covered 240,000 square feet of floor space, down slightly from the 701 exhibitors and 245,200 square feet of floor space last year.



CBS Sports announcer Jim Nantz, the voice of the Masters, pledged to do a better job of telling the story of golf maintenance during tournament broadcasts during his presentation at the Opening Session in San Diego. Photo by Bruce Mathews.

Opening Session as CBS Sports announcer Jim Nantz brought down the house with a pledge to do a better job of telling the golf maintenance story during golf broadcasts. He promptly followed up that promise with praiseworthy comments during the Saturday and Sunday broadcasts of the Buick Invitational at Torrey Pines.

GCSAA's International Golf Course Conference and Show is the world's largest golf course management conference/trade show, with attendance averaging more than 20,000 per year over the past nine events. Last year, according to *Tradeshow Week* magazine, GCSAA's trade show ranked

The Blenders Choice

Why do blenders of premium fertilizer depend on Nitroform® and Nutralene® nitrogen...

...They are the effective, safe, environmentally sound nitrogen.



Nitroform and Nutralene nitrogen offers these many features and benefits.

- Nitrogen availability closely parallels the plants' nitrogen needs.
- Non-burning.
- No growth flushes after heavy rains or due to granule breakage during handling or application.
- Vigorous, controlled growth and color with less grass clippings.
- Balanced growth of roots and leafy parts of plants, increasing plant vigor.
- Very little nitrogen escapes to surface water or groundwater.

The next time you buy fertilizer, remember to look for blends that display the original Nitroform or Nutralene logo, it's your assurance of quality nitrogen.

For the name of a blender in your region contact us at 1-888-370-1874.



Nu-Gro Technologies, Inc. 2680 Horizon Drive SE, Suite F5, Grand Rapids, MI 49546
www.nugrotech.com

Nitroform and Nutralene are registered trademarks of Nu-Gro America Corporation



This was the view from my room at the Bay Club Hotel and Marina

84th among the top 200 tradeshows (there are more than 4,500 trade shows in the U.S. annually).

GCSAA's 76th International Golf Course Conference and Show will take on a new format, appearing next year as the Golf Industry Show. It will combine the trade shows hosted by GCSAA and the National Golf Course Owners Association. Both associations will operate separate education conferences that will run concurrently with the trade show. The 2005 Golf Industry Show is set for Feb. 10-12 in Orlando, with the GCSAA education conference Feb. 7 - 12 and the NCGOA education conference Feb. 8 - 12. I think this union will help get owners more involved in the issues facing the golf business.

My good friend, Monroe S. Miller, golf course superintendent at Blackhawk Country Club in Madison, Wis., for the past 30 years, was presented the Green Section Award from the United States Golf Association at its education session. The award is given annually by a panel of experts in the turfgrass field and recognizes distinguished contributions to golf through work with turfgrass.

Gordon LaFontaine, Danny H. Quast, CGCS, and Gordon C. Witteveen were selected as recipients of the GCSAA's Distinguished Service Award. LaFontaine, known for his leadership in Michigan turfgrass affairs has worked with the Florida Turfgrass Association during an independent review of the IFAS program at the University of Florida and Gordon



Scott Bell, Red Stick GC, left, and Gary Morgan of UHS agree on weed control.



From left: Jay McCord, John Foy and Greg Pheneger catch up with each other at the FGCSA Reception.

Around 400 Floridians got together at the Wyndham Emerald Plaza to nosh on shrimp cocktail, see old friends and meet new ones.



Kim Shine, Windsor Parke GC in Jacksonville was checking out tee signs at the trade show.



I flagged down Steve Ciardullo, Mountain Lake CC, for a snapshot while he cruised the show.



I spied a couple of our IFAS Turf cohorts, Dr. George Snyder, left, and Dr. John Cisar at the Milorganite booth.



A lot of us were away from home on Valentines Day. Hey, I got lonely.

Witteveen, a well known author, columnist and Canadian superintendent, is a member of the Florida West

Coast GCSA. He winters in Tarpon Springs and visits area courses and

Dry Fertilizer
Bulk Liquid Fertilizer

Office: 954-741-4041
Fax: 954-741-4082



GREEN-WAY

Quality Turf Products
We Specialize in Keeping you GREEN

MANGA PLEX PLUS • ULTRA - GREEN • BIO-PLEX

10008 N.W. 53rd Street • Sunrise, Florida 33351

Thank you to all our FGCSA Reception Sponsors

Level I. Platinum Sponsors

Bayer Environmental Science
Dow AgroSciences
Golf Ventures Industries
Harrell's Fertilizer/Polyon
Kilpatrick Turf /Boynton Pump
Syngenta
Florida Toro Distributors - Hector,
Wesco Turf and Wesco Turf Supply

Level II. Gold Sponsors

Eagle One Products
Grigg Brothers
Lesco
Nucrane Machinery
Quality Grassing & Services
Southeast Partners
Tresca Equipment Co.
United Horticultural Supply

Level III. Silver Sponsors

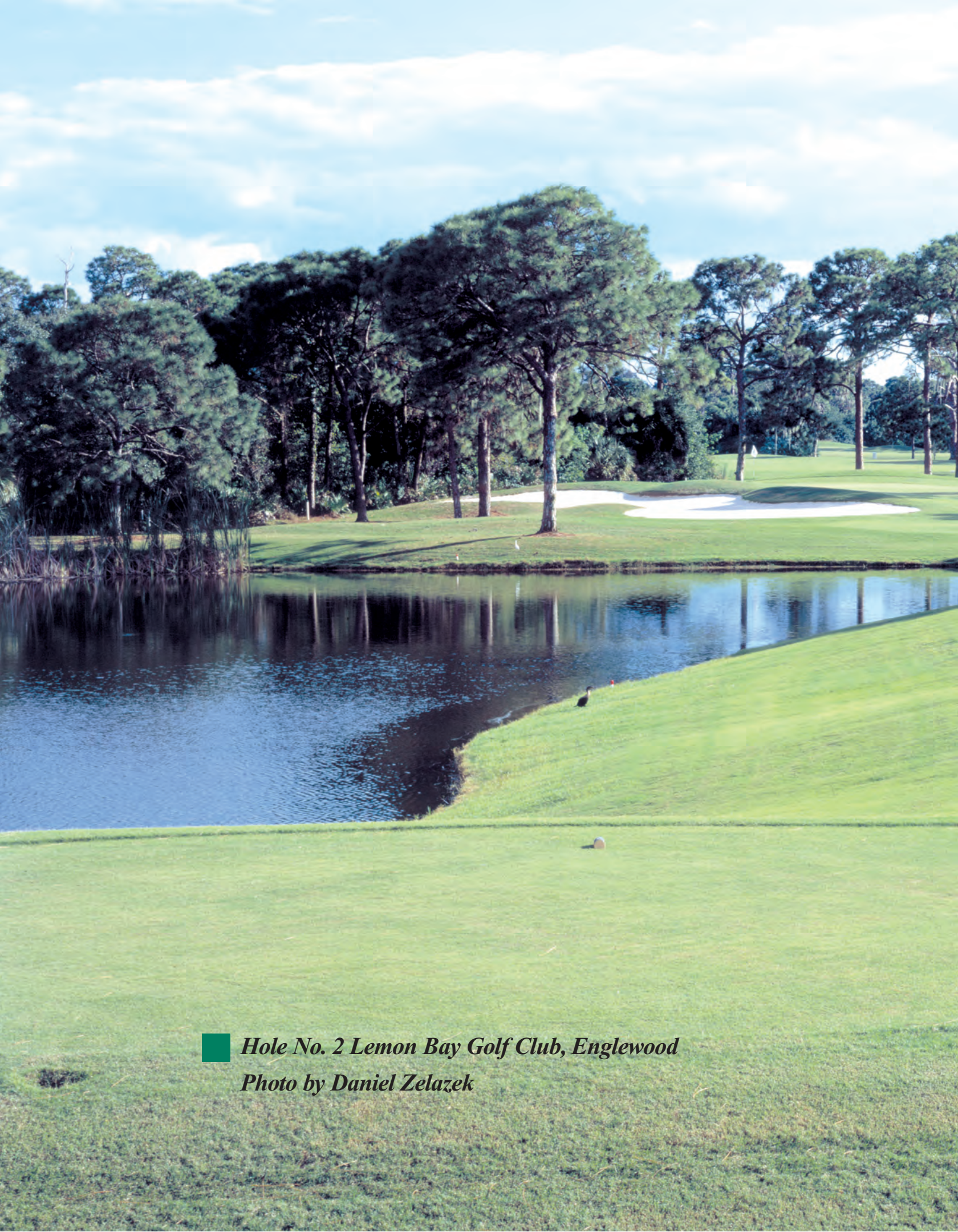
BASF
Country Club Services
Detailed Sport Turf Const.
Disbrow Enterprises
FMC Corporation
Florida Superior Sand
Golf Agronomics
Griffin L.L.C.
Liquid Ag Systems -
Div. of Douglass
Precision Small Engine
Prime Turf/pHairway
Sullivan Electric & Pump
Total Golf Construction
Turf Merchants, Inc.
Valent U.S.A.

Level IV. Bronze Sponsors

Almar Turf Products
Aerification Plus
Amerigrow Golf
E. R. Jahna Industries
Floratine
Flowtronex
Gowan Company
Green Edge Technologies
Gro Pro
Hamilton Grading & Grassing
Hamilton Turf Farms, Inc.
Haverland Blackrock

Hendrix & Dail, Inc.
Laserturf
Lewis Equipment Co.
Monsanto
Parkway Research
Pennington Seed
Rainbird Golf
Tee to Green Turf Products Inc.
Tom Burrows Turfgrass
The Andersons Inc
Upstart Products
3 Tier Technologies (Dan Burdette)





 *Hole No. 2 Lemon Bay Golf Club, Englewood*
Photo by Daniel Zelazek



LEMON BAY GOLF CLUB

A Course That Scores a Couple of Eagles

By Joel Jackson

Every course has a story to tell and Lemon Bay is a book with several chapters. In many ways it could be called a rags-to-riches story.

There's the course-history chapter that takes an 1890s lemon grove and transforms it into a public golf course in 1981 only to fall into disrepair and be rescued by the members in 1989. The member-owners became so successful that they had to expand and incorporate the Long Marsh

Golf Club at Rotunda to serve the long waiting list for membership.

There's a chapter on the superintendent Chip Copeman, who guided the transformation of the golf course from a weed-infested wreck to a beautifully manicured gem of a golf course. Copeman graduated from the school of hard knocks and is a throwback to the days of the apprentice learning his trade at the side of a master craftsman. Now he's the vice president of the Suncoast Chapter and is a firm supporter of con-

tinuing education. His annual trips to the Masters Tournament in Augusta were part of his inspiration to excel in his profession.

Lemon Bay is a Certified Audubon Cooperative Sanctuary. Certainly another tale worth telling filled with creative ideas on how to accomplish that goal and be a better steward of the area's natural resources. When there's a pair of bald eagles living in an eight-acre preserve in the middle of your golf course, it pays to be a good environmental steward because first, it's the right

Tom Burrows, Consulting
Agronomist/Turfgrass Specialist
Independent Consulting using
"Brookside Laboratory"

Greens Reconstruction

- ◆ Soil Physical Analysis
- ◆ USGA Approved Testing
- ◆ Analytical Service
- ◆ Recommendations
- ◆ Specifications for Contractor Bidding

Soil Testing

- ◆ Greens, Tees, Fairways
- ◆ Analytical Report and Soil Fertility Recommendations

Water Testing

- ◆ Report & Recommendations

In the business 40 years

Jensen Beach, Florida
772-692-1221 cell: 772-215-1819

Laserturf.
Setting the Standard

Laser Controlled Leveling
and Topdressing For:

Golf Tees
Sports Fields
Tennis & Croquet
Courts

• **Dale Witting**

Main Office

• **Ron Butler**

Central Florida

• **Tom Mackanos**

Northeast Coast

772-225-3771

1535 NE Darlich Ave.
Jensen Beach, FL 34957



Gator left, great egret right, and one of Lemon Bay's 18 lakes in the middle guard the fifth green. Photo by Daniel Zelazek.

Chip Copeman



Chip Copeman

Originally from: Orlando

Family: Married to wife Lisa for 11 years. Son Kevin, daughter Lindsay

Education: Practical experience in the early years.

Accredited turf management seminars and continuing education at GCSAA, FTGA and FGCSA events.

Employment history: 1982-87 crew member

Myakka Pines GC; 1987-91 assistant superintendent, Plantation G&CC; 1991 to present superintendent/director of turf maintenance at Lemon Bay and Long Marsh courses.

Professional affiliations and awards: Member of GCSAA and FTGA. Currently vice president of the Suncoast GCSA chapter. Served on the board since 2000.

How did you get into the business? My dad got me started in golf at the age of 9 at the Winter Pines GC in Winter Park. My mother worked in the snack bar and we got to play golf for free. At age 12 I was a range rat and picked up range balls after school. I was in and around golf for most of my life and I knew I had a passion for the game and industry.

Mentors: My dad obviously who got me started playing the game. Pat McClain, superintendent at Myakka Pines, who gave me my first maintenance job and the opportunity to learn all the jobs on a golf course to begin my steps to becoming a superintendent some day. In 1987 I went to work for Eddie Fatica at the Plantation G&CC and within 30 days he promoted me to assistant superintendent.

Goals: Maintain the natural integrity of the golf course and continue my education and the crew's education on environmental issues. Create and maintain a close relationship with the surrounding community, with regard to their environmental concerns.

Accomplishments: Getting Lemon Bay and Long Marsh certified in the Audubon Cooperative Sanctuary Program. Lemon Bay was the 25th course in the state and 115th in the world to be certified. In May 2003, Long Marsh became the 60th in Florida and 438th in the world to attain certification.

Work philosophy: Choose goals. Prepare plans to achieve those goals. Have the discipline to follow your plan and your goals will be met. Always remember, there's more than one way to get downtown. Some roads just take a little longer to get there.

Advice: Be involved in your local, state and GCSAA associations. Stay informed and have the right answers. Never guess or pretend to know the answer.

Memorable moments: (1) My wedding day, 12-12-92, beautiful blue sky and cool weather on Boca Grande Island. (2) The death of my good friend Tom Crawford. (3) When I started at Lemon Bay we didn't have power in the maintenance building. We had to run a small generator, but it was so small we would first brew a pot of coffee and then turn on the lights to check the fuel and oil levels on the equipment after the coffee was made.

Hobbies/Interests, community, church involvement: (1) Golf, hunting, fishing, and wood working; (2) Consult and help with Lemon Bay High School sports fields; (3) Christian faith believer

Lemon Bay Wildlife Inventory

MAMMALS

Armadillo
Bobcat
Gray fox
Red fox
Skunk
Rabbit
Raccoon
Palmetto rat

REPTILES

Alligator
Chameleons
Coral Snakes
Indigo Snakes
Eastern Diamondback Rattlesnakes
Gopher Tortoise
Leatherback turtles

FISH

Bream
Catfish
Largemouth bass

BIRDS

Anhinga
Bald Eagle
Blue Heron
Blue Jay
Cardinal
Coots
Crow
Dove
Gallinules
Grackles
Glossy Ibis
Great Blue Heron
Great White Egret
Green Heron
Hawks (several varieties)
Kingfisher
Limpkin
Louisiana Heron
Moorhens
Night Heron
Owls (several varieties)
Roseate Spoonbill
Sandhill Crane
Scrub Jay
Snowy Egret
Terns
Tri-colored Heron
White Ibis
Woodpeckers
Wood Stork



"You're a Turf Pro Mow With a Turf Pro"



7-Gauge Steel Deck—
Heavy-duty, built to last
60" and 72" Cutting Deck—
Cut your jobs down to size

5 1/2" Cutting Depth—
Smaller clippings,
cleaner cut

Kubota's rugged new
ZD Pro commercial
turf mower. Powerful,
affordable and reliable
enough to build your
fleet around.



See One Of These Kubota Dealers Today!

BRADENTON
Franz Tractor Company
5504 15th Street East
(941) 758-2020

DELAND
Triple D Equipment
2820 S. Firehouse Rd.
(386) 734-2119
tripledd@cfl.rr.com

NAPLES
Florida Coast Equipment
694 Commercial Blvd.
(239) 435-1667

DAVIE
Growers Equipment Co.
2595 Davie Road
(954) 916-1020

FT. MYERS
Creel Tractor Company
3771 Palm Beach Blvd.
(239) 694-2185
(800) 282-7949
www.creeltractor.com

WINTER HAVEN
Polk Tractor Co.
3450 Havendale Blvd.
(863) 967-0651
(800) 532-8783

JACKSONVILLE
Coastal Equipment Systems
5287 New Kings Road
(904) 924-9624



Kubota.

EVERYTHING YOU VALUE
KUBOTA TRACTOR CORPORATION MARKETS A FULL LINE OF
TRACTORS AND CONSTRUCTION EQUIPMENT THROUGH A
NATIONWIDE NETWORK OF OVER 1,000 AUTHORIZED DEALERS.

Lemon Bay Golf Club



Lemon Bay Golf Club

Location: Englewood

Ownership: Members

Playing policy: Private (October-April); Semi-Private (May-September)

Number of holes: 18; 6,180 yards; Par 71; **Course Rating** 69.9/Slope 126.

Designed by: Jim Petrides. Opened in 1981.

Management: Club President Bonnie Tyler; Club Manager Peter Hodson; Green Chairman Joe Anderson; Head Golf Professional Missy Eldridge; Director of Turf Maintenance Chip Copeman.

Major renovations: Greens, tees and bunker redesign/renovation by Chip Powell in 1997.

Ongoing vegetation plan: Adding trees and native plants.

Total acreage under maintenance: 90

Greens: TifDwarf, Avg. Size = 5,000 sq. ft., Total = 3 acres; HOC = 5/32 inch summer, 1/8 inch winter;

Overseeding: Princeville blend @ 10 lbs/1,000 sq. ft. Green speed goals: 8.0 summer, 9.0 winter.

Tees: Turf - Tifway 419 Bermudagrass, 4.0 acres; HOC: 5/8 inch; No overseeding.

Fairways: Turf - 419 Tifway Bermudagrass, 35 acres; HOC: 5/8 inch. No overseeding.

Bunkers: 35 = 1.21 acres; Sand type: 38 Special; machine raked with Toro Sand Pro, hand rake edges.

Native areas: 8-acre eagle preserve in the center of the course. Buck Creek and Lemon Creek run through the course from the Lemon Bay waterway. We have 3.5 acres of pine-straw ground cover in the large pine-tree areas in the roughs.

Waterways/Lakes: 18 lakes/ponds. Aquatic weed control done by outside contractor.

Irrigation: Reclaimed water; VFD Flotronex pump station; Toro Osmac radio controlled/computerized control system; Heads on 70-ft. spacing; Fertigation: 1,650-gallon tank. No watering restrictions.

Total staff including superintendent: 12 full time and 1 part time. 40 hours straight time and 4 hours overtime per week.

Leadership: Assistant Superintendent Bruce Crocker; Equipment Technician Bob Himmelhauer; Pest Control Technician Mike Sharpe; Administrative assistance by club's Executive Secretary Cindy Claude.

Communications: Monthly crew/safety meeting. Bimonthly green committee meetings. Quarterly newsletter.

Cultural Programs: Aerification - Greens 4x/year; Tees, fairways, and roughs 3x/year. Verticut fairways 1x/year. Fertilization - Greens every 14-21 days @ 0.5 lb N/1000 sq. ft; Tees, fairways and roughs 6x/year @ 1.0 lb. N/1000 sq. ft. Light fertigation of supplemental nutrients to greens November to February. Periodic light greens topdressing as needed.

Management Challenges: Green speed, nematodes, and pine tree decline.

Environment: Fully certified Audubon Cooperative Sanctuary. We have a nesting pair of eagles in our preserve area and we are fortunate to see young eagles fledged each spring. We maintain a 20 foot "no spray zone" around all lakes and ponds. Daily visual scouting and monitoring of pest problems and threshold levels to assess the actual locations and need to apply pesticides.

thing to do, and second because there are laws that protect our national symbol. Certification became a natural way to go and Lemon Bay got help from local high school students - an idea anyone can borrow to help with the process.

Every course has its unique set of operational challenges, such as soil, drainage, turf management, landscape and weather - which is another chapter in the Lemon Bay story. Seasons come and go, each one bringing different growing conditions. After years of drought, Lemon Bay endured 48 inches of rain from June to September in 2003. The normal average is 52 inches per year.

Chapter One: History

The Lemon Bay Golf Club is located just off State Road 775, which snakes its way south on the mainland from Englewood to Placida on Florida's southwest coast. West of the course lie mangroves, Lemon Bay and Don Pedro Island. To the east lie the Rotunda and Port Charlotte communities and the pine and palmetto scrubland flats of southwest Florida.

In 1981 the course rose from the overgrown acres of a pioneer lemon grove. It was designed by Jim Petrides, who had also designed the nearby Rotunda community golf course. It opened and operated as a public golf course for many years but, for whatever reason, the course conditions declined and it became an eyesore. The irrigation system was in a shambles. Smutgrass grew everywhere and nematodes devoured the turf, creating large bare areas on the course. In 1989 a group of members bought the course and began to turn it around.

It took man working with nature and some good agronomy from three to five years to get the course looking respectable, but at the end of the five years they had been so successful they had to cap the membership. A seven-to-ten-year waiting list ensued. The nearby Long Marsh Golf Club, located two miles away in Rotunda, came on the market and the Lemon Bay members group bought it to serve the waiting list.

Chapter Two: The Superintendent

Born in Orlando, Chip Copeman was around golf courses and landscaping for most of his childhood and early adult life. His mother Pat worked at the Winter Pines Golf Club in the snack bar. This gave him access to the course and his dad started him playing the game at the age of nine. Copeman became a "range rat" who worked picking up range balls after school and in return had the run of the golf course. Thus began a lifelong love affair with the game. He currently maintains a six handicap.

After working at a variety of landscape jobs, Copeman knew golf was his passion. In 1982 he

took a job on the crew at the Myakka Pines G.C. in Englewood under superintendent Pat McClain. Copeman was a sponge as he soaked up all he could learn under McClain's tutelage, and in turn McClain let him learn all the jobs on the course. Copeman set his sights on becoming a superintendent. After five years at Myakka Pines, he went to work for Eddie Fatica at the Plantation Golf and Country Club. Copeman's apprenticeship was about to get a big boost. After only 30 days of watching Copeman in action, Fatica promoted him to assistant superintendent.

Copeman says, "Eddie took all the course management skills I had learned on the job and molded me into the kind of superintendent it takes to be successful in this business." Four years later, Copeman assumed his first superintendent's job at Lemon Bay. He's been here for 13 years, a testament not only to his agronomy skills but to his character as a manager and a leader. Copeman's responsibilities include overseeing both the Lemon Bay and Long Marsh courses. Copeman acknowledges that he couldn't be successful without two critical elements at Lemon Bay.

"I'm a firm believer that you're only as good as your resources, but I'm also a believer in not having excuses like 'our budget is too small' or 'I don't have enough people or the right kind of equipment.' I try to do the best we can with what we have. In this age of technology and new products, I don't forget about the old ways of doing things. We're not too proud to hand-pull a weed or hand-rake pine needles or roll up our sleeves to do whatever it takes to get the job done. I don't want to hear *why* you can't get a job done. I want you to tell me *how* you got it done. That kind of attitude takes a supportive staff and we have a good one at both of our locations.

"The other element of course is the people who provide those needed resources... the owners and members. This can be a fickle business, as you know. I never thought I'd be here for 13 years, based on the way it goes at some clubs. I have to publicly thank our membership. They have shown the greatest respect for me and my knowledge of the golf course. I can tell you the respect is mutual. I can go to them about anything and I do go well in advance to discuss issues, situations and needs so they know what to expect. This relationship wouldn't be as solid as it is without the guidance and mentoring I have received from Peter Hodson, the general manager. Peter has been involved with the club since 1989, first as a consultant and now full time since 1999.

"Some superintendents fail two or three years after a big effort because the club doesn't match the resources to their demands or expectations. The superintendent has to be able to clearly identify and present and defend what it takes to provide the desired

SPREADRITE, INC.

CUSTOM SPREADING

FERTILIZER • DOLOMITE • GYPSUM
ARAGONITE • HYCAL LIME

FAIRWAY TOP DRESSING

LAMAR SAPP

ART SAPP

6001 S.W. 19th STREET
PLANTATION, FL 33317
MOBILE: (361) 479-8417
MOBILE: (954) 383-4836

Upstart Products, Inc.

GreenHoover Brushes
Fits Turf, John Deere & Johnsen

CASCADE PLUS

LIQUID OR GRANULAR

PHYTO-FUS

Fast Release System - Phytonutrients

AMINO ACID BIOTRIFLIZERS

Ureoloid A-1 - Ureoloid B
Micro-Sorb Nutritive - Micro-Sorb Pflanz

1 800 203 5629

Wake Up Your Turf



with GreenEdge®

Liquid GreenEdge® provides a complete nutrient package with an added kick of micronutrients, seaweed extract and humic acids.

Give your turf a fresh start with GreenEdge® organic blend!


GreenEdge®

GreenTechnologies, Inc.

Call toll free 877-GREEN30 for product and distributor information or visit us at www.green-edge.com.

**Agronomically Superior Environmentally Sound
Technologically Advanced**

Long Marsh GC



Long Marsh GC Crew

Ownership: Members

Playing Policy: Semi-private all year

Number of holes: 18, 7,160 yards, par 72,

Slope/Rating: 74/127

Designed by Ted McCanlis; constructed by M.G.I.

Opened: 1999

Management Team: Same as Lemon Bay and includes Head Golf Professional Ted Green. Golf Course Superintendent Mike Troxell reports to Chip Copeman.

Acreage under maintenance: 115

Greens: Tifdwarf; Avg. Size 5,000 sq. ft., Acres: 4;

HOC: 5/32 inch summer, 1/8 inch winter.

Overseeding: 10 lbs/1000 sq. ft. Princeville seed mixture. Green speed goals: 8.0 summer, 9.0 winter.

Tees: Tifway 419, Acres: 5; HOC = 5/8 inch.

Overseeding: Perennial Ryegrass @ 400 lbs/A.

Fairways: Tifway 419, Acres: 45; HOC = 5/8 inch.

Overseeding: Perennial ryegrass @ 300 lbs/A.

Roughs: Tifway 319, Acres: 60; HOC = 1.5 inch. No overseeding.

Bunkers: 13, Sand type: 38 Special; Machine-raked with Toro Sand Pro, Hand-rake lips.

Waterways: 16 lakes/ponds. Aquatic weed maintenance by outside contractor.

Irrigation: Lakes and Canals; Pumping System: Flotronex VFD; Control System: Toro LTC. SWFWMD watering restrictions apply when in force. Converting to reclaimed water source in the near future.

Staff: Total including superintendent: 9. Scheduled 40 hrs straight time and 4 hours overtime per week. Superintendent Mike Troxell, Equipment Technician Andy Easley, Pest Control Technician Ray Terrazas.

Environment: Long Marsh is a fully certified Audubon Cooperative Sanctuary.



Trimmed-back mangroves (by permit) provide a gap for the tee shot over Lemon Creek on the par 3, 15th hole. Photo by Daniel Zelazek.

results. All you can do is give the best you can for the size of the budget. To do that you need to surround yourself with good people. They don't always walk through the door. Sometimes you have to mold them from the people you have and those you can hire to work in this business. Then you have to motivate them.

"I believe in teaching employees something new as often as possible. It makes them more effective and it shows you have an interest in them. They may leave and take that skill with them, but they know who made them more valuable. I always encourage my superintendents to share what's been given to them, the tricks of the trade, to pass it on to others. My journey through the ranks has been a great learning experience from being on the bottom rung and working my way up. I know what I can expect from others. I've learned to assess their strengths and weaknesses and harness them to be productive employees. Like I always say, 'There's more than one way to get downtown. Some roads just take longer to get there.'"

Copeman also believes that his golfing ability gives him an edge when it comes to evaluating playing conditions and credibility when he explains what needs to be done to achieve those conditions.

Chapter Three: The Sanctuary

One of the roads followed at Lemon Bay was the path of becoming a certified Audubon Cooperative Sanctuary, which they accomplished in 1998 and renewed in 2003. Their sister course, Long Marsh, is also certified, becoming the 60th course in Florida to achieve that distinction.

Having an eight-acre eagle preserve in the middle of your golf course is like hanging out a sign saying, "Hey Look At Me!" and the eagle watchers do watch. Copeman is mindful of nesting season and keeps projects to a minimum in the area to avoid disturbing the eagles. His diligence has paid off as eagle watchers report seeing eaglets fledged each spring. Mother Nature unfortunately disturbed them more when a recent storm damaged their primary nest. The eagles have been constructing a temporary home in a pine tree on one of the fairways. Everyone is anxious to see if they will repair the old nest.

The Florida Golf Course Superintendents Association is supporting Audubon International's five-year campaign (50-in-5) to get 50 percent of the nation's courses enrolled in the Cooperative Sanctuary Program. It is a natural fit for courses to work with an environmentally focused organization that recognizes golf courses can be a tremendous asset to wildlife and natural resources. More members are joining all the time, but why the slow pace? It can't be the dues; they're only \$150 a year. The biggest fear is that it will take more time. Time that superintend-



Syngenta never stops working to keep your course green.

Sure, we have an unmatched portfolio of products. From Subdue MAXX™, the industry leader against Pythium, to Barricade®, the longest-lasting pre-emergent against crabgrass. But we're never content. Keeping turf healthy means constantly refining our formulations. And developing new ones, to ensure we always have the best products. Making sure you have the tools you need, that's what we do.

**Contact Lee Bloomcamp at 1-352-495-3405, Pablo Perez at 1-305-969-9996,
or Kevin Wasilewski at 1-863-860-4293 to learn more about Syngenta.**

Important: Always read and follow label instructions before buying or using these products.
©2003 Syngenta. Syngenta Professional Products, Greensboro, NC 27419. Banner MAXX™, Barricade®, Daconil®, Heritage®, Medallion®,
Primo MAXX™, Subdue MAXX™, and the Syngenta logo are trademarks of a Syngenta Group Company.

www.syngentaprofessionalproducts.com



View of the dogleg third hole from the green. Lemon Bay rewards good shot selections, not sheer length off the tee. Photo by Daniel Zelazek.

ents don't feel they have. Copeman found an answer at Lemon Bay that saved him time and provided a great learning experience for area high school students.

Copeman said, "Danny Claude, the son of the club's executive secretary Cindy Claude, was an honor student looking for an extra-credit project he could do for one of his classes. I put him to work installing and monitoring nesting boxes and taking water samples. He worked with me and we went over the reports

and results and he got school credit for the environmental work.

"I bought the wood for the birdhouses and took it and the instructions to the Lemon Bay High School and the shop class built our birdhouses. We got nesting boxes and the kids got class credit for the project and the knowledge that this golf course was doing something for the environment and they helped. The high school swim team joined an "Adopt a Shore" program and they help keep the shorelines cleaned up.

There are kids out there who hunger to do something for the environment. Why not enlist them to help with the ACSP on your course and relieve some of the workload off the staff?

"We put ID placards on each golf car so the members can identify the many species of birds that inhabit the course while they play, and we have bird counts on Men's and Ladies' days. As part of our certification, we have an ongoing program of adding native trees, shrubs and beneficial vegetation along the banks of our lakes. We

Fun Facts



Chip Copeman believes environmental awareness is a way of life at Lemon Bay. Photo by Joel Jackson.

Here are some things you may not know about our cover story superintendent

1. **Car:** 1998 Conversion Van
2. **The last good movie I saw:** Patriot
3. **I stay home to watch:** NFL football
4. **The book I've been reading:** The Bible
5. **Favorite meal:** Lobster, salad and bread
6. **Favorite performers:** Elvis Presley
7. **Prized possessions:** My son and daughter
8. **Personal Heroes:** My mom and dad
9. **Nobody knows that I:** Am shy
10. **If I could do it over:** I wouldn't change a thing
11. **I'd give anything to meet:** President Bush
13. **My fantasy is:** Play golf at Augusta National
14. **The one thing I can't stand:** When people say, "Oh, I forgot!"
15. **If I could change one thing about myself:** Putting the Lord first in my life at an earlier age
17. **My most humbling experience:** Watching my son and daughter raising up their first- and second-place junior-golf trophies. It was like passing the torch.
18. **The words that best describe me:** Motivated, dedicated, responsible

Here's a Nice New Dark Green for All of You Exterior Designers



**Ideal for Fairways,
Roughs, Tees,
Greens Collars and
Practice Areas**

TIFSPORT

CERTIFIED BERMUDAGRASS

**To Order Your Certified TifSport Sod or Sprigs
Contact One of These Licensed TifSport Growers**

South Florida Grassing Hobe Sound FL 772 546-4191 **Super Sod** Fort Valley GA 800 535-1320
Pike Creek Turf, Inc. Adel GA 800 232-7453 **North Georgia Turf, Inc.** Whitesburg GA 800 273-8608
Super Sod Orangeburg SC 800 255-0928

www.tifsport.com



An overcast, dewy dawn on the well-bunkered sixth hole. Photo by Daniel Zelazek.

also maintain a 20-foot no-spray buffer around our water hazards.

“We carefully select sites for new trees so they don’t create a future shade problem. We are experiencing some pine-tree-decline problems, so we have hired Emerald Green to use their injection program to save them. We also expanded the pine straw areas around the trees to restore their native habitat and avoid competition with the turf.”

Chapter Four: Maintaining the Course

In 1991 USGA Agronomist John Foy rode the course with the newly hired Copeman and declared, “This is the worst golf course in the state.” A year later his comment was, “This is the probably the fastest turn around of conditions I’ve ever seen.” Copeman took it as a great compliment.

Copeman began his renovation of the course by photo documentation of the problems and provided a historical record of how the course improved over time. One of the early problems was eradicating the prolific smutgrass. A household sponge mop with a wringer proved to be more useful than the rope-wick-type applicators. It took persistence but it paid off. The next obstacle was to improve the single-row irrigation system so grass could be grown on the huge bare areas in the roughs.

Nematodes plagued the course for many years and they were fought with the usual array of products. Copeman says the results of the Curfew application last year were excellent. Overseeding is the only other challenge of consequence. Lemon Bay is not overseeded; the Long

Marsh course is. Copeman says, “Our location next to the bay helps to moderate the winter temperatures and we can get away with not having to overseed. Certainly it helps in the spring when transition takes place. We don’t have to worry about balancing the overseeding with the native bermudagrass, like we do at Long Marsh. When we do get a prolonged cold, gloomy spell in the winter, we have to watch our traffic during the poor growing conditions.”

So we come to the end of the story. There are no magic potions or silver bullets at Lemon Bay. It is just hard-working people going about their jobs conscientiously in harmony with each other and with nature. Wouldn’t it be great if this story could be told over and over at more golf courses?



Multiply the number below by 12,000
and you'll get an idea of how many
quality holes per hour our
Aercore™ Aerator 2000 can punch,

100

thanks to our patented "flexi-link"
design. Which is almost as impressive
as that divot you just took.
Just make sure you fill it.



Of course, the only holes they care about on your course are one through eighteen. But you'll see the difference in your aeration program once you try our Aercore™ Aerators. From our 800 walk-behind to our tractor-mounted 1000, 1500, and 2000 models, no other aeration unit matches a John Deere Aercore for hole quality and productivity. Why? Easily accessible belts, instead of chains, power the systems, making them quieter and more durable. And the patented "flexi-link" supporting arm ensures that the tines stay perpendicular to the ground longer. To witness aeration at its finest, call your local John Deere Golf & Turf One Source distributor or 1-800-537-8233.

Coastal Equipment Systems, Inc.

Your John Deere
Golf Course and
Sports Turf
Equipment Supplier

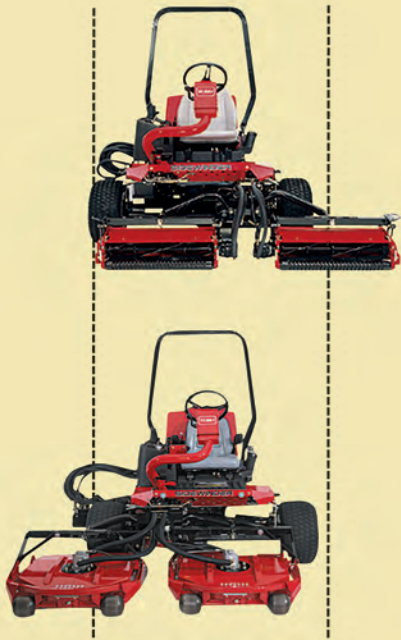
5287 New Kings Rd.
Jacksonville, FL 32209-2732
1-800-275-3860

6025 Highway 301 North
Tampa, FL 33610-9516
1-877-4JD-TURF (1-877-453-8873)

www.coastalequipmentsystem.com

JOHN DEERE GOLF & TURF
ONE SOURCE™





Toro® Groundsmaster® 3500-D and Reelmaster® 3100-D: Two innovative trim mowers with the Sidewinder™ cutting system. The reels on the 3100-D and the ground-following rotary decks on the 3500-D move side to side for superior trimming.



Toro® Multi Pro® 1200 and 1250 sprayers: Featuring the innovative Spray Pro™ control system that directly links flow rate to ground speed ensuring precise application rate.



Who to better understand a perfectionist than a perfectionist.

At Toro we know when it comes to your course, no detail is too small. That's why pros like you are And keep it looking great year after year. To us, it's the perfect relationship. For more information, contact your



Toro® Workman® 1100 and 2100 vehicles: With the most capacity and power in their class, these vehicles get more done. They also feature rattle-free plastic beds for a quieter ride.



Toro® 800S Series sprinkler: Put the water just where you want it. Precision control is made possible with predictable head rotation and uniform nozzle distribution.



Toro® Greensmaster® Flex 21: The greens mower that flexes with the contour of greens to virtually eliminate scalping.

the best source for new ideas on ways to make it look great.
Toro distributor at 1-800-803-8676 or visit us at TORO.com.



The Other 70 Percent of the Golf Course



Multi-gang rotary rough mower used at the Johns Island Club. Photo by Joel Jackson.

According to GCSAA's figures for land use at an 18-hole course; roughs, woods and water hazards make up about 70 percent of a course's total area that is "under maintenance." That's a fact that escapes most people when they talk about the inputs of chemicals, fertilizer, water and labor on a golf course. We spend the most time and money on the greens, tee, and fairways which comprise about 27 percent of the golf course area.

As environmental concerns heighten and budgets tighten, the roughs have become the place of choice to make changes in how we view them. More and more designers are treating rough areas between greens and tees as natural areas with minimal maintenance requirements, and existing courses are finding areas where they can convert previously mowed, fertilized and irrigated turf into native plantings to reduce costs and create more habitat.

For the roughs in play, the trend toward rotary mowers is gaining favor as a labor saver. Two of your peers, Chuck Calhoun and Buddy Keene share their thoughts on roughs from a trend perspective to practical operations.

The Evolution of Rough Maintenance

In the ongoing quest to provide the best possible playing conditions for today's golfers, throughout the course there have been many changes. In addition to new types of turf, advances

in equipment technology may in fact influence how we manage one area of the golf course that not long ago received little or no attention: "the rough."

There are significant contrasts in today's maintenance practices versus the practices of just a few years ago. I can only relay my own experiences. However, I do recall in the early 70s that the "rough" was just that.

Webster's Dictionary describes "rough" as "jagged, scratchy, crude, incomplete, severe,



A lot of superintendents like the mulching aspect of the rotary mowers which chops up leaves and even pine cones saving labor. They also wade through tall roughs after missing a couple of mowings due to wet conditions. Photo by Joel Jackson.



Chuck Calhoun, Superintendent Johns Island South Course. Photo by Joel Jackson.

unpolished, uneven, irregular, and bumpy" and many other terms that, if they were to exist today at any golf course, would surely send the superintendent packing.

Prior to the practice of wall-to-wall irrigation, in most instances with only rainfall for irrigation, the "rough" consisted of whatever would grow and could sustain itself. In the tropics of Florida, that could be almost anything since pre-emergent treatments were new and unreliable and might leave you with a less-than-desirable playing surface.

The gear-driven reel units of this era worked excellently on turf, but unless the reels were kept extremely sharp, they would not cut the varied grasses that nature produced. Even then, the rugged terrain and native growth would dull the units very quickly.

We had to use pull-behind rotary units that were generally designed for pasture and roadsides which didn't really matter, as most often the "rough" had a more-than-passing resemblance to the aforementioned areas. These mowers were usually single-deck units, PTO driven with maybe two

would cut anything, it was very time-consuming and often took more than a week to get around the course just once.

With the 80s and 90s, the practice of wall-to-wall irrigation became much more common and with it the areas of turf to be maintained increased dramatically. The large, gang-reel mower, with gear drive and hydraulic power, could not only cut these expanded areas of fine turf, but could get the job done in a timely fashion.

By now the investment in these areas once considered to be "rough," became merely an area of fairway with a slightly higher cut. Such high visibility and attention now needed the same management approach used on other areas of the course, aerification, fertilization and pest control in the "rough" had become the norm.

Now in the early 21st century has come the introduction of the new age of the rotary mower. These units, now with multi-gang capabilities, ease of maintenance, and superior cutting abilities have started many of us to rethink some of our options in maintaining the "rough."

The tremendous success of programs such as the Audubon International Signature Cooperative Sanctuary Program have propelled many courses to take a strong look at alternative grasses and plantings in the "rough," as well as other areas of the course. With the advent of our new equipment options and the abilities they have we may indeed be going "Back to the Future" in maintaining the "rough."

By Chuck Calhoun

Roughing It at the Gainesville Golf & Country Club

We use a combination of reel and rotary mowers to cut our 70 acres of rough. Our arsenal consists of two Toro five-gang reel mowers, one John Deere three-reel trim mower, one Progressive TriDeck rotary mower and one Jacobsen 72-inch, out-front rotary mower.

Historically we used the five-gang units to mow the bulk of the roughs and it took about a week. In 1998 we began hosting a Nike and later Buy.com Tour events and we were required to overseed the course wall to wall. Because the overseeded roughs needed to be maintained at four-plus inches we purchased the TriDeck Rotary to achieve that height requirement specified by the PGA Tour.

Today we no longer host the tour event and we needed to justify having this mower in our inventory.

We began mowing our bermuda roughs with the TriDeck and found that it was very efficient

WHEN ONLY PERFECTION WILL DO

ACCESSORIZE WITH QUALITY AND PRECISION FROM BROYHILL



Highlander Pro

Greenskeeper Brush

- Gas Powered



NEW DESIGN! NO MORE TIRE MARKS!



Sand Rake

- 71" width
- optional finishing brush

Also available (not shown)

Terra Super Spiker

- Zero to 2.5" working depth
- 5 gangs of spiking heads



Terra Roller

- 2-gangs spiker heads 3-gangs roller
- 66" working width

Even if your current utility vehicle isn't from Broyhill, at least accessorize it with quality, precise accessories from Broyhill. Broyhill accessories are compatible with most popular utility vehicles and have the quality that only Broyhill can provide.

Broyhill

when only perfection will do

Check out our Web Specials Today!

For more info: 800.228.1003, ext. 34 • sales@broyhill.com • www.broyhill.com

We began mowing our bermuda roughs with the TriDeck and found that it was very efficient and productive cutting our previous mowing time in half. It comes in very handy during the rainy season because we have very heavy soils and it may not be possible to mow for several days and it's easy to get behind. When the course dries out, we go out with the rotary and gradually take the grass back down without scalping.

It is also very efficient at mulching up pine cones, pine needles and leaves. Wow, what a labor saver that is, and the rotary costs less to maintain mechanically than the reel mowers.

The only negative thing we have experienced with the rotary is a higher noise level because of the high-speed blades. Scalping is not an issue because we still use the five-gang and three-gang mowers to mow and trim around the greens and tee slopes, bunker mounds and landscape beds. The reel-type mowers are also used to mow out the walk paths from tee to fairway and the intermediate cut around the fairways.

Last but not least, the 72-inch, out-front rotary is used to trim around the trees to put a finishing touch on the rough-mowing program. We maintain a height of cut about 1.5" inches because

that's the height preferred by most of the members.

All of the rough we maintain now is in play so there are no plans to eliminate any of it. We have numerous native and natural areas on our course, which are enhanced by our proximity to the Paynes Prairie State Preserve.

We fertilize the rough two or three times annually depending on rainfall. If we fertilize too much, we could wind up in the hay business pretty quickly. While heavy clay soils can become too wet to mow sometimes, the slow-percolating soil helps prevent leaching of nutrients and our fertilizer applications last longer and can result in savings.

Our biggest insect problem in the roughs are mole crickets and sod webworms. Our budget is more adequate than it used to be, which allows for more control options like Chipco Choice, Merit and some mole cricket baits for spot-treating hot spots. These products work very well for us. Fire ants used to be a problem but we broadcast fire ant bait products twice a year at label rates and we have pretty much put out their fire.

The course is over 40 years old and the shade from our grand old trees and compaction in



Buddy Keene used a combination of reel and rotary mowers in his roughs. Photo by Joel Jackson.

high-traffic areas can create some weed problems. We found by applying Ronstar and Barricade pre-emergent herbicides in the spring and fall, we can get effective control of goosegrass, crabgrass, Poa annua, and volunteer ryegrass. All post-emergent work is done by spot-treating large weed patches with a boom sprayer and small scattered clumps with 2-gallon and 14-gallon portable sprayers.

Our roughs consist mostly of Ormond bermudagrass, which is dinosaur by today's standards. We have to be careful with the herbicide rates because the Ormond is more sensitive to some of the products. It is also slow to come out of dormancy in the spring and slower to recover from cultural practices like aerification and verticutting, so we are careful not to beat it up too badly. However, once the weather warms up, it grows aggressively like any other bermuda and keeps us "roughing it" all summer.

There When You Need Us



With Solutions That Work

Cleary's Solutions Programs combine proven products and new, cutting-edge chemistry along with the know-how and experience to help solve your turfgrass disease problems.

For more information about Cleary's **Solutions Programs** contact your local Cleary's Turfgrass Professional.



Count on Cleary

Read and follow all label directions. The Cleary logo, 3336, Spectro and Alude are trademarks of Cleary Chemical Corporation. Endorse is a trademark of Arvesta. Nutri-Grow Magnum is a trademark of Biagro Western Sales, Inc. Visalia, CA. ©2003 Cleary Chemical Corporation.

What is all the hype about?

The Thatch-Away[®] SUPA-SYSTEM[®]



WORLD PATENTS PENDING

Thatch is the biggest problem superintendents are fighting worldwide! If you have a thatch problem today or are trying to prevent one in the future, you need...

The Thatch-Away[®] SUPA-SYSTEM[®] **MAKE US PROVE IT!**

Call your Florida distributor today to request more information or to get a demonstration

"A great piece of equipment that lets me remove tremendous amounts of thatch on our new Tif Eagle greens without having a noticeable effect to the golfers."

-- Rick Wall
Belleair Country Club
Belleair, Florida

"After trying the verticutting reels I was so impressed I bought them right off the distributor ~ Tampa Bay Turf. You have hit the JACKPOT in turf grooming design!"

-- Walter Owsiany, CGCS
The Vineyards of Naples
Naples, Florida

Tampa Bay Turf Management

Southeast
* Tom Phillips (561) 719-6265

Southwest
* Jim Lawson (239) 633-6398

Northeast & Central
* Carl Bronson (727) 638-5858

Northwest
* Frank Cook (727) 235-3637

Tampa Region
* Terry Brawley (727) 638-3481 *

*...it's all about the greens!*SM
TURFLINE, INC
www.true-surface.com
(800) 443-8506



Super Tips

Shedding Some Light on Several Situations

Darren J. Davis

When James P. Whalen, golf course superintendent at Calusa Pines Golf Club in Naples, accepted his current position at this nationally ranked club, he quickly realized he was “in the dark”... in the dark on some of his greens that is. Whalen, a graduate of Lake City Community College, has been employed at Calusa Pines since July of 2003. His prior employment includes stints at a few other well known clubs - Olde Florida Golf Club and Augusta National Golf Club.

When Whalen was hired, he was informed of a few greens that had been a challenge the previous season. After analyzing the situation he swiftly came to the conclusion that excessive shade created by several very tall, stately pines was the culprit, and the specimen trees would continue to pose a problem in the future.

Since removal was not an option, he went in search of other possible solutions. That's when Whalen turned to his equipment manager, John Patterson. According to Whalen, Patterson, an employee of the club since 2001, is his “go-to” guy. With their two heads put together, it did not take long for a light bulb to go on. The solution was grow lights mounted on portable towers.

The grow lights were purchased from Precision for just under \$600 and are attached to an aluminum pole that can be raised up to 12 feet. The pole assembly is affixed to a 4x4 trailer, also constructed by Patterson. On the bed of the trailer is mounted a 2700-watt generator purchased from



The grow lights are attached to an aluminum pole that can be raised up to 12 feet.

Northern Tool and Equipment Company for approximately \$500. The fuel for the generator is supplied by a 6-gallon marine fuel tank also mounted on the bed. The metal for the trailer and pole was purchased locally for approximately \$300, bringing the total cost of the portable grow light towers to around \$1,400.

For one-person transfer, Patterson also installed hitches to the back of the trailers so that

they can be towed in tandem. Whalen preferred the portable, trailer mounted units to “fixed” units as they provide flexibility to move if other areas develop the need for additional artificial sunlight.

Whalen said he anticipates using the light towers from mid-November until March 1 each year. The light towers are placed near the shaded greens after golf play is finished and just prior to sundown each day. Although pleased with the results



The lights are powered by a 2700-watt generator with fuel supplied by a 6-gallon marine fuel tank, both mounted on the bed of the trailer.

to date, he is the first to point out that the grow lights are not a cure-all; they are just one of the tools in his arsenal. He also credits his success this year on the trouble areas to an intensive hand-watering regimen, limiting overhead irrigation use to an occasional deep irrigation associated with a granular fertilizer application. He feels that his foliar spoon-feeding program also played a role in keeping those shady areas healthy.

Whalen found additional uses for the lights that helped justify the expense. In winter - his busiest golfing period - the trailers can be pulled behind a utility vehicle with a greens mower trailer towed behind the light tower, allowing employees to get a jump on play by mowing a few greens before the sun rises. The towers have also been used to provide light for repairing late-night irrigation blow-outs. Whalen says he's sure other uses will arise.

Smooth—Power SM

Soil Reliever Technology

(800) 340-3888

www.aerificationplus.com



When was
the last time
you bought
one of
these in
Georgia?

*Now you can buy
better bermudagrass
where you buy
the best oranges.*

In Florida.



For a long time, Florida was known for oranges—but not bermudagrass. The best bermudagrass came from Georgia. But that's changed. Through a unique program, the Florida Sod Growers Cooperative and leading turfgrass developer Sod Solutions have released Celebration Bermudagrass, a turfgrass of unrivalled quality. It's beautiful, easy to handle and maintain; and it's readily available throughout our state. **Finally, there's a new bermudagrass for Florida, from Florida.**

A Unique Improvement.

From a deeper blue-green color to easier handling, Celebration **trumps** other bermudagrasses.

Certified Purity. No other turfgrass quality control program involves checks by **three** independent organizations. Celebration is inspected and certified by the Southern Seed Certification Association, the Florida Sod Growers Cooperative, and Sod Solutions.

Readily Available. With 16 licensed growers throughout Florida, you can count on ample **local** supply.

Superior Handling. Celebration's tight, dense root system means that it harvests in thinner, well blocked slabs, resulting in easier handling and a smooth, **consistent** finish when laid.

Maximizes Resources. Reduced mowing requirements and improved shade tolerance decrease maintenance and **eliminate** costly renovation.

For more information about Celebration Bermudagrass, including where to buy, photos, and best management practices, visit www.celebrationforflorida.com or contact Sod Solutions 843.849.1288.



Celebration Bermudagrass is a joint release of the Florida Sod Growers Cooperative and Sod Solutions, Inc.



The Celebration Bermudagrass and Sod Solutions names and logos are trademarks of Sod Solutions, Inc.

Cap X in Hard Times

Hats off to the Super Savers

Over the past twenty-something years, I have had the pleasure of working with some great superintendents and suffered the frustration of working with some bad ones. Like any profession, there are bad apples who can leave a bad



taste in the mouth of the owner. You know the ones... come in at 8 a.m., work until 4 p.m., spend most of that time complaining about lousy equipment and yelling at their staffs. I call them the Blamers.

Whenever there is a problem, they blame their staff, me, the weather, customers, course construction, their

dog and anything but themselves. These are the guys who make me very nervous when they say, "WE need some new equipment." All of a sudden it's "WE." The problem is the person is never straight with me about their operation so it is hard to take his or her word for it. So the inquiry begins. Why do WE need it? How old is the machine? Do a productivity analysis on a new machine (that one kills them). Can we get by with repairing the old one? If you don't have confidence in your superintendent, then Cap X (Capital Expense) becomes a much bigger problem than usual. The usual problem is where to get the money to buy it.

Then on the flip side of the coin is the superintendent who bears the weight of the world on his shoulders. There's no bull. When these people need something done, they guide and direct their staffs thru the processes. They solve problems rather than create them. Their staff respects them and they have little turnover.

This individual comes to the owner like this: "You know we've talked about it before and we have nursed that piece of equipment along, but looking forward we are going to spend more money piecing the thing together.

"What a relief! He or she has done the productivity analysis, meaning the cost to repair vs. the cost to replace... obtained quotes from sales persons who are not their relatives, and even looked at financing and used equipment as an alternative.

Combined with our down time while it is being fixed, it will cost more money than replacing it this year. I have looked at replacements and have three quotes from Orange, Green and Red. They all have financing available. I have also looked at used equipment and have found a piece in good shape with only "x" amount of hours on it. I will piece the current equipment along until you let me know what you want me to do."

What a relief! He or she has done the productivity analysis, meaning the cost to repair vs. the cost to replace, combined with the increase in work the crew will be able to do with the new machine. They have obtained quotes from sales persons who are not their relatives and they have even looked at financing and used

Computer-Exact Custom Mixes. Every Order. Every Time.

- All Loads Scaled
- Soil Analysis Available



- Next Day Service
- Volume Orders

Visit our website at www.golfAg.com!

Traps Installed to Spec.



Golf Agronomics meets all your top dressing needs with our ability to customize your mix with a variety of soil amendments including:

- Dolomite
- Hi-Cal
- Charcoal
- Wetting Agents
- Humic Acid
- Minor Elements
- Rock Phosphate
- Gypsum
- Customer Products

**GOLF AGRONOMICS
SUPPLY & HANDLING**

Serving all of Florida

(800) 626-1359
(941) 955-4690 Fax

2004 Plants of the Year

In an on-going effort to promote the production, sale and use of superior Florida-grown plants, the Florida Nurserymen & Growers Association is pleased to announce the 2004 selections of the Florida Plants of the Year. This program was launched to promote under-utilized, but proven Florida plant material. These proven ornamentals are selected on an annual basis by a group of growers, horticulturists, retailers, landscape professionals and University of Florida faculty.

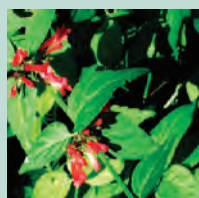
For a plant to be considered a Plant of the Year, set criteria must be met. Selected plants have good pest resistance, require reasonable care and are fairly easy to propagate and grow. The award winning plants must also exhibit some superior quality, improved performance or unique characteristic that sets it apart from others in its class. Here are two 2004 selections for your consideration:



Needle Palm. Photo:
Leu Gardens, Orlando

Common Name: Needle Palm
Botanical Name: *Rhapidophyllum bystrich*
Hardiness: Zones 7-11
Mature Height and Spread: 5' - 8' Tall x 6' wide
Classification: Native Palm

Landscape Use: Understory, specimen, border, erosion control, foundation or massing
Characteristics: Slow-growing cluster palm makes a dark green mound of palmate leaves growing in sun or shade. Long dark needle-like spines develop at base and cover trunk.



Red Russelia. Photo:
Leu Gardens, Orlando

Common Name: Red Russelia
Botanical Name: *Russelia sarmentosa*
Hardiness: Zones 8b-11
Mature Height and Spread: 5' Tall x 5' Wide
Classification:

Flowering shrub/Perennial
Landscape Use: Specimen plant or border
Characteristics: Covered with bright red tubular flowers for all the warm months and is a butterfly attractant. Masses of splendor arching stems create a mounding appearance

'DEALING WITH JERKS AND KNEE-JERK REACTIONS'

by Dr. Patt Schwab

Thursday, May 13, 2004

8:00 a.m. to noon

Preregister with Poa Application
or call FGCSA @ 800-732-6053
Approved for .35 GCSAA points

Naples Beach Club

Powell Golf Design Company

Lewis C. "Chip" Powell ASGCA



Classically Inspired

Golf and Nature
working together



Environmentally Sensitive

2831 Ringling Blvd., Suite 202A · Sarasota, Florida 34237
941.955.8429 · Fax 941.366.8429 · www.powellgolf.com



equipment as an alternative. The only thing for me to do is to figure out where to get the money to pay for it.

The superintendent who approaches all capital repairs with this attitude is valuable at any time but most importantly at this time in the industry when more courses are being built and fighting over sales, which is decreasing the average course's revenues. With the superintendent having this approach to all Cap X, in the end you have a better product for less money.

Thank you Super Savers.

Bill Stine

Editor's note: This Owners Outlook column is a semi-regular feature and part of a cooperative communications-exchange effort between the FGCSA and FGCOA to share information and concerns. In February 2005, at the national level, the GCSAA and NGCOA will hold a joint Golf Industry Show in Orlando and our worlds will move closer together, as they should. Hopefully, we are getting a little head start.

USGA Green Section Florida Regional Update Recovering From Mid-Winter Course Conditions

We have passed the halfway point of the 2004 Florida winter season. After a slightly rough start for some during the late fall and early winter, typical mid-winter conditions are being found during TAS visits around the state.

Normal winter season wear-and-tear is evident, but appropriate and acceptable course conditioning is being provided. On a positive note, temperatures and day length are increasing and becoming more favorable to the resumption of sustained bermudagrass growth, and with this it should be possible to produce some recovery and improvement in course conditions.

Along with direct turf injury and wear, another consequence of heavy winter season traffic is soil compaction. As compaction increases, moisture and oxygen infiltration are restricted, which in turn limits growth and recovery. Aeration of high traffic areas and putting



John Foy

surfaces is encouraged to help relieve compaction and promote a faster recovery response. Water injection cultivation or aeration with small diameter solid tines causes very minimal surface disruption and provides two to three weeks of relief.

The biggest obstacle to winter aeration is often scheduling needed maintenance practices when peak play is occurring. At a growing number of facilities, course closures for maintenance are being allowed during the winter season, which is very beneficial in providing top quality conditions.

The winter and spring months also are the Florida dry season, and below-average rainfall (3-inch deficit as of March 15) has been recorded throughout the central to southern portion of the peninsula. While far from the drought conditions of a few years ago, limited rainfall is starting to present some management challenges. The combination of increasing temperatures,



Brannack

TURF CARE

DETHATCH • AERIFY • EXCELLENT SEED BED



- Greens
- Fairways
- Tees
- Rough
- Approches
- Etc.

HEAVY DUTY VERTI-CUT PROGRAM

BENEFITS: A Beautiful Regeneration of Turf Through:

- Less compacted Turf
- Drought tolerance and prevention of disease & fungus
- Better drainage
- Better absorption of water and fertilizer
- Creates deeper root structure
- A light aeration
- A level fairway - for player satisfaction
- Plus, clippings used for sprigging sparse growth areas

Also Available...

DEEP TINE AERATING (The Soil RelieverSM)

1213 Piney Branch Circle • Valrico, FL 33694
Phone & Fax: (813) 707-9493
Mobile: (813) 246-2155

North Georgia Turf, Inc.

"Providing Sodding and Sprigging Services to Golf Courses"



- Superior Cold Hardiness
- Superior Response to Close Tee and Fairway Mowing Heights
- Genetic Purity
- Mole Cricket Non-Preference



'El Toro'
Zoysia

For Fairways and Tees

1487 Blackdirt Road
Whitesburg, Georgia 30185

800-273-8608





**AN EARLY MORNING RIDE
DOWN YOUR FAVORITE FAIRWAY
MAKES YOU APPRECIATE
YOUR HARD WORK
AND LONG HOURS.**

LESCO is there.

Some days everything seems just right. Other days are less than perfect. But one thing is for sure. Building, growing-in or maintaining a golf course presents many challenges. And it's up to you to turn the challenges into opportunities. The problems into solutions.

A business relationship with a company focused on your needs helps. Someone offering service, convenience, technical expertise and value. Someone who understands what you're up against.



Someone like LESCO.

SERVICE. LESCO is there with the most complete line of products available anywhere.

Everything from seed, fertilizer, control products and application equipment to flags, cups and markers. Plus so many additional services. Like

custom blending, soil testing, grassing specifications and agronomic program development... just to mention a few.

CONVENIENCE. LESCO is there with 69 LESCO Stores-on-

Wheels®, 235 LESCO Service Centers® and a variety of direct delivery options. No one makes it easier and more convenient to obtain the products you need...when you need them.

TECHNICAL EXPERTISE.

LESCO is there with turf professionals who appreciate the challenges you face and are fully prepared to answer your questions. Turf management and product use recommendations are all part of the job...part of the convenience and service.

VALUE. Put it all together and what you get is an overall commitment from a company dedicated to meeting your needs. That's called value. And value is all about. Call 800-321-5325. LESCO is there.

LESCO®
G R O W W I T H U S.™

bright blue skies, and windy conditions result in rapid soil moisture loss and high evapotranspiration (ET) rates.

Additional care must be exercised with supplemental irrigation to avoid the onset of drought stress, especially at courses where winter overseeding is practiced. Juvenile overseeding, lack drought tolerance and can be thinned quickly by drought stress. Through the spring, closely monitor for drought stress. Daytime irrigation may be necessary to prevent a fast transition of the overseeding cover.

Until rainfall occurs on a regular basis, salt accumulation in the upper rootzone can be a problem. Even with irrigation sources that have low to medium salt content, a progressive build-up in concentration levels can occur. Thus, it is a good idea to monitor with soil sampling and, if needed, schedule flushing or leaching irrigation cycles.

This regional update, and others written by the Green Section staff, may be found on the USGA Web site at www.usga.org/green.

John Foy, Director



GCSAA News New Governance Model Will Save Officers' Time and Jobs

I'll be anxious to see how the new governance model works out as the GCSAA board members turn over the details of running things to the staff under the direction of Steve

Mona our CEO. It's a worthwhile idea since the travel time away from work for a sitting officer or board member ranges between 30 and 100 days a year. That's too long to be away from work and keep your job. Just look at the job changes of former officers. This just makes sense, and might get more people involved.

The 2004 budget and strategic initiatives

- Good news for superintendents looking for a job. The GCSAA's online Employment Referral Service is now free.
- The association is budgeting \$175,000 for television exposure for continuing its national outreach campaign.
- The association will be developing plans for more diversity within the organization's membership and improving international opportunities.
- Florida had two research projects approved in the Chapter Cooperative Research Program. Dr. Lawrence Datnoff will be looking at management of *Bipolaris* and *Curvalaria* on ultradwarf greens, and Dr. Billy Crow will be studying the best timing for nematicide applications based on soil temperatures, nematode



Foliar Fertilizer & Nutrients

Bulk Liquids

Custom Liquid Blends

Wetting Agents, Stickers, Defoamer, Indicator Dye

TEE-TO-GREEN TURF PRODUCTS, INC.

P.O. Box 2224
Palm City Florida 34991

E-mail: Tee2green2001@aol.com

Fax: 772-692-4887

Mobile & Voice mail: 561-719-3462

1 - 800 - 900 - 6444

***Superior Solutions for Turf Professionals*®**

Most Superintendents
Rely on Rubigan® as a
Herbicide For
Poa annua Control.



Some
Rely on Rubigan
as a Fungicide
For Turf Disease.

We Just Want Your Turf to Look Great.

Rubigan® A.S. fungicide outperforms herbicides for *Poa annua* control and tackles tough turf diseases.

Rubigan provides excellent control of *Poa annua* without harming turf or impeding the germination of desirable grasses. That's because it eliminates *Poa* plants as they germinate, much like a preemergence herbicide.

Plus, Rubigan is a locally systemic fungicide that controls tough turf diseases like spring dead spot, take-all patch, dollar spot and brown patch. Reach for the best *Poa* product on the market —Reach for Rubigan.

Rubigan® A.S.
Fungicide

Gowan
The Go To Company

P.O. Box 5569 • Yuma, AZ 85366 • Toll Free: 800.883.1844 ext. 2 • www.gowanco.com

Rubigan® A.S. is a registered trademark of Gowan Company. Always read and follow label directions.

activity and root development.

Environmental Management Program

Congratulations to Bob Bittner, CGCS and 2003 FGCSA Presidents Award Winner. Bob has completed all areas of specialization in GCSAA's Environmental Management Program (EMP). Fewer than 40 superintendents have accomplished that feat. There are six areas of specialization within the EMP:

- Employee safety and right-to-know
- Golf course development
- Habitat development and Management
- Integrated pest management
- Storage, disposal and recycling
- Water quality and application

Bob says that by taking seminar courses within these areas of specialization he could focus his continuing education for a specific purpose and goal. He says that the EMP program helped him achieve ACSP certification, designing his new chemical storage/mix load facility and IPM programs, and even in the remodeling of the golf course.

Moving Up

GCSAA has an online booklet available called "From Assistant Golf Course Superintendent to Superintendent: Making a Smooth Transition." The booklet provides information on continuing education, professionalism, tips on ways to achieve career success and other information that will help move you forward in your career. The view is a little different when you are where the buck stops on everything that happens in maintenance.

Compliance Corner

One of best online tools for superintendents is GCSAA's "Compliance Corner" in the Government Relations section at www.gcsaa.org. The section contains a comprehensive list of state and federal OSHA, EPA, DOL and general safety resources. It covers everything from safe handling of drinking water (a really big deal these days) to external defibrillators and child labor laws.

Retirement

With all the buzz about Alan Greenspan's comments on Social Security, it pays all of us to take steps to secure our own

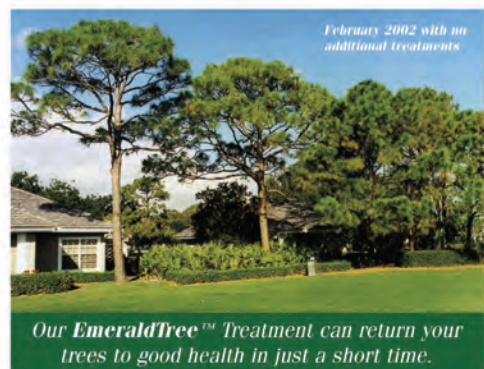
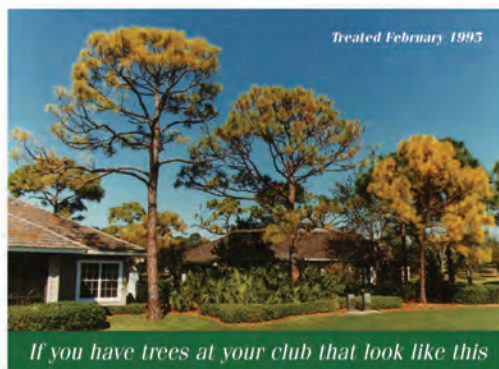
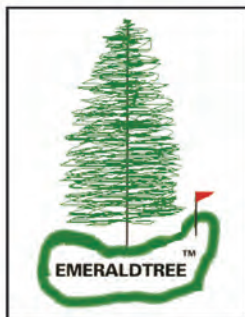
retirement funds. This is especially true in our profession where retirement benefits are often non-existent as part of our compensation packages. The GCSAA has a program called Golf Retirement Plus, which provides the following benefits:

- Personalized retirement planning. Specialists work one-on-one with members to determine the best investment strategy.
- Affordability. There are no sales charges on contributions so every dollar contributed begins working immediately.
- Significant tax savings. Members can defer taxes on potential earnings.
- Portability. The plan can be taken from one job to the next.
- Family Protection. The program provides a death benefit that ensures loved ones will be taken care of after a member's death.

For more information call Golf Retirement Plus toll free at (877) RET-PLUS.

Compiled and edited by Joel Jackson

EmeraldTree™



We can do the same thing for your trees – GUARANTEED!

Do you have sick yellow trees? Do you have some "Key" trees you're worried about? Don't cut down another tree needlessly – Save those trees – Treat them with EmeraldTree. Over 95% of our treated trees regain color and vigor and we guarantee the treatment to last a minimum of **THREE YEARS!!** We now offer the Arborjet insecticidal system to protect your trees from Bark beetles. Call Neal Howell @ 251-402-9848, Robert Howell @ 561-523-1295 or call toll free @ 877-779-TREE (8733). Visit our web site @ WWW.Emeraldtree-inc.com.

DAKOTA GIVES “MULTI-PURPOSE” A NEW MEANING



FROM THE DAKOTA 410 TO THE 440 – WE CAN HANDLE THE JOB

Whatever your needs. Be it moving it, spreading it, filling it or leveling it. DAKOTA has the right equipment at the right price. Check out our great line of Turf Tenders, Spreaders, Dethatchers, Blenders and Soil Movers at Disbrow Enterprises.

410 FEATURES:

- Spread Pattern Variable up to 30 Feet Wide
- Rear Unloading Hopper Conveyor
- Dual Spinner Discharge System
- Vehicle Mount Control Panel for Electric over Hydraulic Drive System
- Manual Rear Door Adjustable from 0" to 7"
- Detachable Parking Stand for Storage
- Mounts on John Deere ProGator or Toro Workman
- Hydraulic Lift Allows Easy Engine Servicing
- Hopper Built Long Enough to Accept 6 Foot Loader

440 FEATURES:

- 4.2 Yard Hopper Capacity
- Hydraulic Swing-Away Conveyor
- Dual Spinner Discharge System
- Fender Mount Control Panel for Remote Hydraulic Drive System
- 4 Softrac Turf Tires with Independent Walking Axles
- Belly Mount Box Scraper
- Electric Vibrator
- Hydraulic Rear Door
- Manual Front Door



440 – Spread



410 – Pull Type



440 – Bunker Fill

DAKOTA

Contact us at:
disbrowent.com or call
954-345-8577 for
more information or
a free demonstration
of our equipment.

**Disbrow
Enterprises**
TURF DISTRIBUTION DIVISION



2004 Capitol Hill Visit

Legislators Don't Understand Golf's Role in Economy, Environment

By Joel Jackson, CGCS

Encouraged by our reception and conversations with legislators in Tallahassee last year, the FGCSA officers asked our lobbyist Mike Goldie to schedule another round of visits this year. We went during the legislative session last year, so this year we explored going up during committee-work weeks prior to the session so their schedules wouldn't be so tight.

This year we had a couple of items of concern that we explored with each legislator:

- Six water bills that were on the agenda.
- The upcoming budget and would IFAS again be affected after three years of cuts.
- Legislative funding of turf research. If North Carolina can do it, why can't we?

We talked to the following people: Rep. Dudley Goodlette (R-76, Naples); Sen. Ken Pruitt (R-28, Port St. Lucie), chairman of the appropriations committee; Sen. Paula Dockery (R-15, Lakeland),

member of the agriculture and natural resources committees; Sen. David Aronberg (D-27, Greenacres), whose district runs from Fort Myers to Palm Beach; and Sen. Skip Campbell (D-32, Tamarac) from Broward County. What we discovered in our conversations was that these folks understood that golf was out there, but they didn't always understand how our industry fit into the big picture. Or simply that golf in and of itself was not on their radar screens as having issues that needed addressing.

Rep. Goodlette. On Monday evening, we spent an hour with Rep. Goodlette. If you've ever been to Naples you have undoubtedly seen or passed Goodlette-Frank Road. So Mr. Goodlette is from pioneer family stock. He has seen Collier County grow and understands how important golf is to his part of the state. But like many legislators he doesn't understand how turf research gets funded and when we gave him the examples of the North Carolina legislative support and how we used grass varieties developed exclusively in Georgia, he became very supportive of

improving Florida's efforts to become a leader in turf research.

On Tuesday morning we started the day with a meeting with Steve Rutz, Dennis Howard, Dale Dubberly and Leigh Humphrey of the Dept. of Agriculture and Consumer Services. The topic of chief concern was the status of the arsenic issue as it related to the use of MSMA. They reported that the state and the MAATF were negotiating an agreement on a prospective ground water study to try and determine the exact role, if any, that the application of MSMA is playing in releasing arsenic into the ground water. Our message was that we support decisions and policy based on sound science and that we would cooperate as much as we could in the process. After that session, we began our appointments with four senators.

Senator Pruitt is an advocate for IFAS, but he is frustrated that IFAS doesn't do a better job of taking its message to the people. He encouraged the institution to publicize its contributions to health, wealth and food and environmental safety of the state. He suggested that IFAS hold more open-house tours of its research centers to tout their value to the citizens of the state.

We also broached the subject of direct legislative funding for turf research. We used the example of North Carolina's funding of \$650,000 a year to NC State's turf program. He was supportive and offered some ideas that we will follow up on with Mike Goldie.

Senator Dockery had all sorts of nature photos and plaques on her walls from environmental groups. She was the sponsor of one of the water bills dealing with the mandatory use of effluent water for irrigation, and the first words out of her mouth were... "since golf is a big water user." We quickly dispelled that misconception with our Economic and Environmental Information Kit that we left with each legislator.

Mike eased us into the discussion of the intent of her bill which had exempted golf courses from being forced to hook up to effluent unless it was



From left, FGCSA Lobbyist Mike Goldie with Vice President Joe Pantaleo and President Greg Pheneger during the January 2004 trip to Tallahassee. Photo by Joel Jackson.

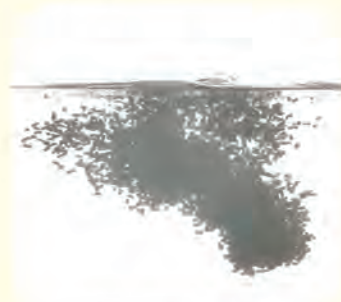
Historically Proven: The One Reliable Mole Cricket Control.



Easy to handle and measure

No-dust, low-odor Orthene® Turf, Tree & Ornamental Spray 97

- Smooth-flowing pellets improve handling and measuring accuracy
- Controls over 40 pests (more than Chipco® Choice™)
- Labeled for use on over 110 plant species
- Controls pests through both contact and local systemic activity
- One of the most cost-effective turf insecticides you can buy
- Wide range of tank mix flexibility



Clean flowing with minimal dust and odor



Quick-dissolving

Learn more about *Orthene 97* from your distributor or by visiting www.valentpro.com.



Products That Work, From People Who Care™ | www.valentpro.com | 800-89-VALENT (898-2536)

Read and follow the label instructions before using. Products That Work, From People Who Care is a trademark of Valent U.S.A. Corporation. Orthene is a registered trademark of OMS Investments, Inc. Orthene 97 is U.S. patent 6,013,272. Chipco is a registered trademark and Choice is a trademark of the Aventis Group. ©2004 Valent U.S.A. Corporation. All rights reserved. 10140.13

technically, practically and economically feasible. It was those interpretations that we zeroed in on. In the course of the conversation she also acknowledged that she couldn't understand the knock against golf courses since she saw so much wildlife on the courses she played during those annual political fundraisers. She also confessed her contribution to her scramble team was as a putter and not much else.

Senator Aronberg is a young lawyer who helped the sugar industry negotiate the Everglades clean-up issue and sugar tax. He comes from a golfing family. He plays, but in truth it isn't a passion right now. When we brought up research funding, he associated us with the recently approved PGA-sponsored license plate for junior golf and asked if we didn't get money from that. We told him that IFAS researchers had to solicit the money for their projects and the private industry and non-profit associations like ours were the major source of funds. He was surprised. After hearing some facts about golf's impact to the state and our long-term support, he said he would help us in any way he could. He was the lone legislator to respond to my thank-you letter that I sent to each of them. Again he pledged his support for our issues.

Senator Campbell is a golf nut. He loves the game. Before we even got down to the business of

our visit, he challenged us to a putting contest in his office. It was a great ice breaker. I have to report that only Greg Pheneger, who hasn't been able to play since his back operation, was the only one to sink a putt to challenge the senator, who holed both of his. Local knowledge I suspect. Senator Campbell was also a sponsor of one of the water bills, and we found out it was a shell bill kept in the wings in case private entities tried to take over water rights without due process. In an area of the state where golf is being heavily scrutinized in the arsenic issue, we have an advocate for golf.

When I attended the Florida Pesticide Review Council meeting the week before our Tallahassee trip, I had the opportunity to meet Rep. Roger Wishner (D-98, Plantation), who is also from the Broward County area. He was the legislative sponsor of the PGA's junior golf license tag. Mike introduced us and filled him on our issues and concerns to give a different view of golf besides playing and growing the game. And a couple of weeks after our trip I attended a Florida Fertilizer and Agrichemical Association meeting in Crystal River. One of the speakers was Sen. Nancy Argenziano (R-3, Crystal River), chairman of the agriculture committee. She's heard of the Environtron Classic. She understands the

importance of agriculture and arranged a tour for freshmen senators who came from urban areas and have no clue about the Number 2 industry in Florida (See *Mark Jarrell's column in this issue*).

There is no doubt in my mind that the professional fact-based meetings that we are conducting on these annual trips to Tallahassee will help us gain support for the issues facing the golf industry. We aren't asking for special treatment or favors. We are providing facts and pledging to work for solutions that will benefit our industry of course, but ones that make sense for everyone.

But Mike Goldie repeatedly tells us that the best way to deliver our message and earn legislative support is at the grass-roots level. Each chapter can work with Mike to arrange a meeting with the senators and representatives that serve their regions. It will carry more weight for a legislator to be among his or her constituents at the local level. Chapters should seriously consider allocating one of their monthly meetings to a meet-your-legislator session. It would be a great time to have a superintendent/manager or club official joint meeting. Find out from Mike the best time of year to hold such a gathering and do your part to improve government relations.

Neo-Tec[®]

Effective, Environmentally Sound Nematode Control

It's true! **Neo-Tec** isn't like other nematicides. Neo-Tec is naturally derived and EPA registered under the safer pesticide rules. Neo-Tec is harmless to beneficial nematodes and is completely biodegradable.

- **Promotes healthier roots by controlling harmful nematodes**
- **Easy container disposal, minimal PPE and re-entry time**
- **Reduces damage to plant root in the following ways:**
 - ▶ **Disrupts the ability of plant parasitic nematodes to locate plant roots, thereby restricting penetration, feeding and reproduction**
 - ▶ **Reduced nematode feeding activity reduces the opportunities for invasion by pathogenic fungi**



Parkway Research

A Division of

BRANDT
CONSOLIDATED
Professional Agriculture

800.442.9821

info@parkwayresearch.com

Fax 281.590.3353

Dow AgroSciences

Curfew[®]

Soil Fumigant

*Trademark of Dow AgroSciences LLC

Have you booked your Curfew[®] yet?



73 Days after Application

- **Curfew soil fumigant for nematode control is applied by certified applicators with approved equipment.**
- **Labeled for use on all established, actively growing golf course fairways, roughs, tees, and greens complexes; athletic fields, and polo fields.**

For information, please contact your Local Sales Representative for Curfew:

Susan Carney
South Florida
561-644-5692

Raymond Miller
Central Florida
813-363-9059

Linda Satter
Georgia, North Florida
404-435-3153

Russ Barnette
North Carolina
919-345-3744

Always read and follow label directions.
<http://www.dowagro.com/turf> 1-800-258-3033
**Trademark of Dow AgroSciences LLC

Curfew is a federally Restricted Use Pesticide.

Stewardship Notes

Why You Should Join the ACSP Now!

By Joel Jackson

Can we agree that golf courses often get a bad rap in most news stories whenever pollution or water quality are mentioned? Can we also agree that we know golf courses really are positive environmental assets to a community? Would you or your club ever want the positives to be praised and the negatives debunked? If you answered “yes” to these questions, then I hope you already are a member of the Audubon Cooperative Sanctuary Program.

If not, why not?

We are good for the environment and it's way past time we tooted our own horn. The ACSP is best way we've got to demonstrate our environmental stewardship.

Reputation and Results

For \$150 per year dues, you receive the services of an environmental consultant with a stellar reputation. The Audubon International (AI) has received numerous awards and recognition from the U.S. Environmental Protection Agency and the GCSAA for its proactive work, not only with golf courses, but also schools, commercial properties, residences and whole communities. They will help and guide you and encourage you, but they will never dictate what projects you must do at your club. Their suggestions and recommendations are just that and they are based on the information you supply about your particular site. Here are some examples of the high regard officials have of the ACSP program:

Programs such as Audubon

International's represent the types of positive partnerships that need to be created across the country. This type of an effort is the only way that we can positively deal with the many, serious environmental issues we face as a nation. - Christine Todd Whitman, former EPA Administrator

My observation has been that Audubon International provides a real service to, and sets up a real challenge to be met by, real environmental professionals, and in doing so, is responsible for signifi-

cant voluntary environmental progress... I can attest that AI's strategy is not just words, but represents genuine accomplishments. - Michael C. Farrar, Office of Pesticide Planning and Toxicity, EPA

Audubon International has stepped up and created a very practical and effective program that now serves as a model for other industries. It is one the few programs that can demonstrate clear, on-the-ground accomplishments that benefit the environment and that is also successfully changing people's attitudes - Peter W. Stangel, Director, SE Partnership Office, National Fish & Wildlife Foundation

Why wouldn't you want to be part of that effort for the good of your own property and the community? Not only is it the right thing to do, it makes

good business sense.

Courses involved in the ACSP, and especially those who get certified, have realized genuine cost savings. In the time of tight budgets who doesn't want to save money and direct efforts to maximizing customer satisfaction? I don't know what dollar amount you can put on the public-relations value of holding school or environmental tours, annual bird counts or other community outreach, but it certainly can't hurt. Here are just some of the benefits to clubs in the program tabulated from a recent survey:

- 82% reduced pesticide use
- 75% reduced pesticide costs
- 80% decreased managed turfgrass to increase wildlife habitat (less turf, less cost) Average increase of 22 acres per course for habitat
- 69% decreased water usage or 1.9 million gallons per year per course
- 99% report playing quality has been improved or remained the same
- 99% found golfer satisfaction improved or remained the same
- 99% of superintendents report job satisfaction improved or remained the same
- 85% did not track costs or benefits of ACSP.
- 100% of the certified courses that tracked costs noted a reduction in costs due to ACSP

So we've got a respected environmental association (Audubon International), with a highly regarded program (Audubon Cooperative Sanctuary System) that protects the environment, saves money and enhances your reputation as a good neighbor. Then I have to ask, “Why are only 13 percent of the nation's courses participating in the plan?”

We know the annual dues are only \$150, so it can't be the money. Is it apathy or the assumption that it will take a lot of time? I can't address your apathy. You have to look in the mirror each day. I know from personal experience that the “time excuse” is baloney. You have to invest a certain amount to get started, but help is available to do that from AI and the FGCSA.

Numerous articles have been written (see



Your club should have one of these to announce your commitment to good environmental stewardship.

SeaIsle1 Keeps Your Irrigation Options Open



Option A

Streams, Canals, Rivers, Ponds, Lakes, Wells & Brackish Water

SeaIsle 1 will produce high quality fairways and roughs with high quality water. It also thrives when irrigated with many medium-to-poor quality water sources. As with all turfgrass, management practices will vary depending on water quality, rainfall and season.



Option B

Recycled Water, Gray Water and Effluent Water Sources

Recycled water usually varies by location, season, quality and nutrient content. Depending on the uniformity of your source, you may need to monitor water quality daily, weekly or monthly. SeaIsle will do quite well with up to 4, 5, even 8 thousand TDS.



Option C

Use Blended Ocean Water with Aggressive Management

Fresh water is a must during the grow-in phase, but mature turf can be irrigated with ocean water/fresh water blends. This requires a comprehensive aeration and leaching program to move excess salts downward through the soil profile.

- Most Salt Tolerant Turfgrass •Tolerates Gray Water & Effluent
- High Tolerance to Salt Spray, Water Logging and Periodic Inundations
- Low Fertilization and Minimal Pesticide Requirements •Good Rooting in Sandy, Clay or Muck-Type Soils
- Darker Green Color Than Bermudagrass •Excellent Low Light Intensity Tolerance •Excellent Winter Hardiness
- Tree-Shade Tolerance Similar to Bermuda •Can Be Overseeded with Bentgrass-Ryegrass-Alkaligrass
- Recommended pH Levels: 5.5-8.0

SeaIsle1

Certified Seashore Paspalum

www.seaisle1.com

SMR Turf & Trees Bradenton FL 941 746-8873
 The Turfgrass Group Marshallville GA 866 967-2652
 Phillip Jennings Turf Farms, LLC Norristown GA 877 887-3626
 Emerald Island Turf, Inc. Punta Gorda FL 941 637-4770
 Pike Creek Turf, Inc. Adel GA 800 232-7453
 Rapid Turf, Inc. Rincon GA 912 826-2454

ACSP Update

New Members

Boca Rio GC, Boca Raton, Bob Ranquist, CGCS
 Coral Creek Club, Placida, Robert Wagner (A)
 Countryside CC, Clearwater, Dale Reash, CGCS
 Naples National GC, Terry Wood (A)
 Queens Harbour CC, Jacksonville, Jason Wilson (A)

Newly Certified

Camp Creek GC, Panama City, Larry Livingston,
 CGCS
 Hammock Dunes, Creek Course, Palm Coast, Matt
 Howes (SM)
 (A) = Class A Supt behind names; and
 (SM) = Supt Member [the old Class B] to recognize
 those who are participating in continuing education
 and maintaining Class A status

the ideas in the Lemon Bay cover story in this issue) and case studies published how superintendents have recruited help from the club members and others to do the legwork on the projects. There are lots of people who want to help the environment and they can be harnessed to do the work. It is a *cooperative*, sanctuary, not just yours.

50-in-5 Campaign

Currently the Audubon International is entering year three of its 50-in-5 campaign to get 50 percent of all golf courses into the ACSP. With a flat membership growth the last couple of years, frankly we're all a little disappointed.

Each FGCSA local chapter was given a chart that showed the total number of FGCSA members and the number enrolled in the ACSP program. The chart also showed that if each chapter made a positive effort to enroll just a few courses each year that we could achieve that 50-percent goal easily. Now we only have three years to go until 2007.

As I said before, this is a *cooperative*

effort and superintendents shouldn't carry the burden alone. I call on the Florida State Golf Association, the Florida Golf Course Owners Association and the Florida Club Managers Association to step up and get their member courses enrolled in the ACSP. The United States Golf Association already supports the program. More people in the golf industry need to

show their commitment to the environment by supporting this program.

We are already called to task for the misconceptions about golf. Won't you join now to promote the game, your club and the industry to give golf its proper respect and place in the environment?

Juvenile Owl Survives Eagle Attack



Superintendent Mark Shoemake to find out what steps should be taken next. Joanna Fitzgerald of the Conservancy informed us that she would be right out to the course to identify the bird and take it for monitoring for any injuries that may need to be treated at the conservancy. In the meantime, we were instructed to find a lift that could get us to the nest, which the mother great horned owl was watching over closely.

We contacted NationsRent and representative Steve Acquafresca graciously donated the use of a 60-foot boom lift for replacing the owl in its nest. At 10:30 a.m. Tuesday, the owl was strategically placed in the nest by Naples Conservancy employee Amy Heller. She was accompanied in lift by Shoemake and myself.

During the course of the day we anxiously awaited the mother great horned to return the nest, which did not happen. Thanks to everyone's efforts and much to our relief, the mother-and-child reunion occurred on the following day when we found the mother huddled next to the juvenile on a branch near the nest.

This was quite a rewarding experience for all and a token moment in the day-to-day routine of golf course and landscape maintenance. It will be added with pride and merit to our membership experiences in the Audubon Cooperative Sanctuary System for Golf Courses.

Walk on the Wild Side

By Brian Beckner

It was Monday, Feb. 16, at the LaPlaya Golf Club in Naples and our Landscape Superintendent Doug Fuller was making his routine, early-morning tour of the golf course. As he approached to the 13th green he noticed a bald eagle swooping close to the treetops of the nearby stand of slash pines. Next thing he saw was a juvenile great horned owl that could not yet fly, falling to the ground. The young owl scurried to safety in a nearby landscape bed hiding among the Mexican petunias. He was not attacked again.

The Conservancy of Southwest Florida was then called by Assistant Golf Course

Tifton Physical Soil Testing Laboratory, Inc.

Accredited by the American Association for Laboratory Accreditation (A2LA)

Specializing in:

- Testing All Materials for USGA Golf Green Construction.
- Developing Putting Green Rootzone Mixtures that meet USGA Specifications.
- Recommending Topdressing and Bunker (Trap) Sands that meet USGA Specifications.
- Developing Sportsturf Rootzone Mixes with Optimum Physical Properties for Athletic Fields.

1412 Murray Avenue
 Tifton, Georgia 31794



www.tiftonsoillab.com

T. Powell Gaines
 (229) 382-7292

Southern Tradition #29

Drive



*Remember when "drive"
was something you had...
not something you did.*

Harrell's hasn't forgotten.



Get a jump on the competition.
Call your Harrell's rep or
call toll-free at: 1-800-282-8007

Or visit our Web site: www.harrells.com

Harrell's reps will go the distance for you. That's because – for Harrell's – providing you with efficient, high performance service is a top priority. In addition, Harrell's world-class, custom-blended fertilizers are formulated to give you optimum turf growth and health; state-of-the-art technology and quality ingredients guarantee it. Together we are all part of a fine-tuned team that assures you'll get what you need, when you need it. It's a winning combination.

Mark My Words
Food for Thought...and the Economy

By Mark Jarrell, CGCS

The economic "down-turn," if that is the appropriate word to describe what the country has experienced for the past few years, has not hit Florida as hard as it has most of the other states. One big reason is because the agricul-



ture and natural resource sectors - those industries served by IFAS research and extension, which

includes turf management - performed better than any other major sector of Florida's \$484 billion economy during this period.

Between 2001 and 2003 personal income in Florida increased by 7.6 percent compared to 4.8 percent for the rest of the country. Of 22 major industry sectors of Florida's economy surveyed during this period, only management of companies and enterprises (27 percent), exceeded farms (26.2 percent) in personal income growth. I don't know quite what to think about these numbers that were generated by a recent University of Florida/IFAS economic impact study.

My long history of working through FTGA and FGCSA committees with IFAS has been continuous frustration that our legislature cuts the IFAS budget year after year, failing to recognize that agriculture and natural resources are the heart and soul of Florida and its economy. No matter what a governor or a group of legislators would like Florida to become, ignoring what it is just never made any sense to me.

Kudos go to all those working in the green industries, who have performed so well despite the lack of support by those who write legislation and set state budgets. My question is how long can this strong performance go on as IFAS continues to be hamstrung by dreamers and urban legislators who've never had dirt under their fingernails?

While trying to attract more high-tech industry, with its higher incomes, to our state is a worthwhile goal, it would seem to be an intelligent strategy to ensure that the industries that are currently serving the needs of the people of this state are protected and supported. Agriculture and natural resource industries - which include such diverse enterprises as citrus, forestry, seafood, sugarcane, vegetables, ornamentals, and turf - generate about \$62 billion in output impacts (\$31 billion in value-added impacts). About 650,000 people work in these industries, generating \$19 billion in labor income and nearly \$3 billion in indirect business taxes. Florida's unemployment rate hovers around 5.1 percent, while California is at 6.6 percent, North Carolina is 6.1 percent, Oregon is 8.2 percent, Colorado is 5.8 percent, Massachusetts is 5.5 percent, and Washington is at 7.3 percent - states specifically pursuing economic development strategies based on high tech industries.

The diversity of Florida's agriculture and natural resource industries is impressive - not only do we have more golf courses than any other state, but our citrus, seafood processing, and at least nine other crops are tops in the nation. While this diversity gives our economy a stability and balance that other states don't have, it also makes it difficult to secure private research and development investment - 12 million acres of corn in Iowa will attract more investment than our 850,000

acres of citrus. One would think our legislators would recognize the value of this diversity to the stability of our economy and try to nurture and preserve it by increasing the investment in the kind of research and extension that IFAS does so well, rather than continuing year after year to decrease it.

As for tourism, am I just being simple-minded, or is it just common sense to think that people visit or move to Florida because of our great weather, water, beaches, fishing, golf courses, and green spaces? Yes, we have Disney World and other attractions, but so do other states. I love visiting San Francisco, but when I jump in the car I want to see Napa Valley, not Silicon Valley. Let's hope that Mike Martin can find a way to make this message resonate with the powers in Tallahassee.

As it Lies
The Times They Are a' Changing

By Jim Walker

A couple of years ago, players on the PGA Tour, European Tour and Senior PGA Tour were asked what was the single most important advancement which has led to the superior quality of play today. Most people expected the answer to be new and better clubs and balls or the conditioning of the



players who are stronger and in much better shape, or a combination of those factors. To everyone's

surprise, the answer almost to a man was the condition of the turf being so much better today than it was in the 50's, 60's or even the 70's.

Each decade has

brought new and better varieties of grass, safer and more effective pesticides and sophisticated mowers and supporting equipment.

A visit from the state DEP inspector several weeks ago made me think of the strides our industry has made in the last 30-odd years that I have been in the business. Not only have we made giant steps forward with our mowing and cultural practice equipment, and grass types, but more importantly, we have made even bigger steps in the use and application of pesticides. Superintendents have become environmental stewards and, as such, the players, workers and applicators are safer because of it. The environment, the non-golfing public, and our wildlife are in much less peril than back in the good old days.

I am most pleased that future generations of golf course workers will be less at risk because of some of the pesticides which were removed from the market. Furthermore, I am pleased that all the aforementioned non-golfers, wildlife, and the environment in general are also less at risk.

Don't get me wrong, I'm not saying everything we did back then was unsafe or wrong, but there is no doubt that where we are now is much better than where we were then.

Just think of how much more effective it is to spot-spray Sencor or Revolver for goose grass than to boom spray MSMA. How much better we are now that we apply pre-emergent herbicides for grassy and broadleaf weeds than to have to make all those post-emergent applications?

What a wonderful day it was when we could apply one fungicide to address all our fungal problems than to spray this for that and that for this, and on and on it went!

How much better off are we with grasses that tolerate 1/2-inch to 3/8-inch mowing heights

CONSYSTENT CONTROL IN THE MOST INCONSISTENT CLIMATES.



Consistent performance, consistent results. When the humidity is up and the temperature is rising ConSyst® fungicide gives you turf disease control you can count on time after time, every time. ConSyst works on contact and it works systemically to prevent and cure even resistant diseases, so no product rotation is

ConSyst®

needed. Used in a regular program, ConSyst is even fungistatic to pythium diseases. ConSyst is one fungicide with such a broad spectrum of disease control, it's become the "all-purpose fungicide" for turf and ornamentals. If you want consistent protection, you want ConSyst from Regal Chemical Company.

The all purpose fungicide for Healthier plants / / 800.621.5208

on fairways and dwarf varieties of putting green grasses being mowed at .150-inch or less on a regular basis with minimal damage?

How much easier is it now to aerify greens and pick up the debris with a core processor rather than a crew with shovels and trap rakes turned upside down?

What did we do before trap rakes that groomed bunkers with one man in just a few hours in most cases?

Isn't it wonderful to verticut or groom during the growing

season with ease, and then to dust the greens with our rotary top dressers?

How difficult is it to keep level tees now? Dude, just call the contractor and have him laser level them every couple of years!

How about fertigation? Fertilize every night when you water!

One Adam Twelve, see the man on the two-ton truck broadcasting 5 tons of fertilizer an hour! I watched with amazement as that same device - and one like it - put out 650 tons of top dressing

on four soccer fields in less than four hours. How long would have that taken with a couple of walking Turfco top dressers?

I could go on for a while longer now that I'm on a roll but no need beating a dead tree or a dead tree hugger or a young superintendent who doesn't know where this industry has come from. Trust me. We've come a long way, baby, and hopefully still have a long way to go.

Who knows, maybe someday we will see a grass that

needs no water, food, mowing or other tending to. I guess that's not really likely since grass is a living organism and all living things need a little TLC from folks like us.

Leadership - A Learned Behavior

By Bruce R. Williams, CGCS

Early in my career I learned from some great mentors.

continued on page 56 ...

Show and Tell

Put More 'Grin' Than 'Grip' into Award Presentation Photos

From time to time in future issues, we will provide some writing and picture-taking tips to help you improve your communications skills whether it's for your club newsletter or for articles for other publications.

Photos are a great way to capture memories and the history of your department at the club or your chapter, whether they're the good old 35mm prints or slides or digital images. Maybe these pictures will go into an album or onto a CD for the archives, but then again they might be used in the *Green Sheet*, *The Florida Green* or even a national publication like *GCM* or *Golfdom*.

The Grip and Grin Photo Op

One of most-often taken photos is the golf trophy, service award or donation check presentation. They are often called "grip and grin" after the handshake and broad smile that go with the handing over of the hard cash or hardware. The most common mistake in this photo-op is the position of the subjects. Ninety-nine percent of the time, the subjects stand at arms length shaking hands and holding onto the



Typically subjects stand too far apart. Also watch for background objects "sticking" out of people's heads. Photo by Joel Jackson.

plaque or whatever.

The other big mistake is keeping the camera too far away from the subjects. We don't need to see their feet. We want to show their smiling faces. And since some of us are maturing nicely, we also don't want our bellies prominently displayed either.

And whether indoors or outdoors, *always use a flash* to take the picture unless you know how to eliminate shadows from overhead lighting or bright sunlight in the dark-room or with your computer.

The key to these photos is to get the subjects close together, shoulders touching and plaque held high. Also get the subjects, especially

if there are more than two, to stand angled toward the camera (45 degrees instead of square to the lens. It helps to minimize the girth of the person and saves column space in the magazine.

And if at all possible, try to create a different pose entirely. Of course it's a good idea to take a "safe" pose as well, in case the bright idea doesn't look so hot when you edit your photos.

One caution - especially for framed awards - is to be aware of reflections of lights and flash on any shiny, polished or glass surfaces. You may have to tilt the award down slightly to avoid reflections.

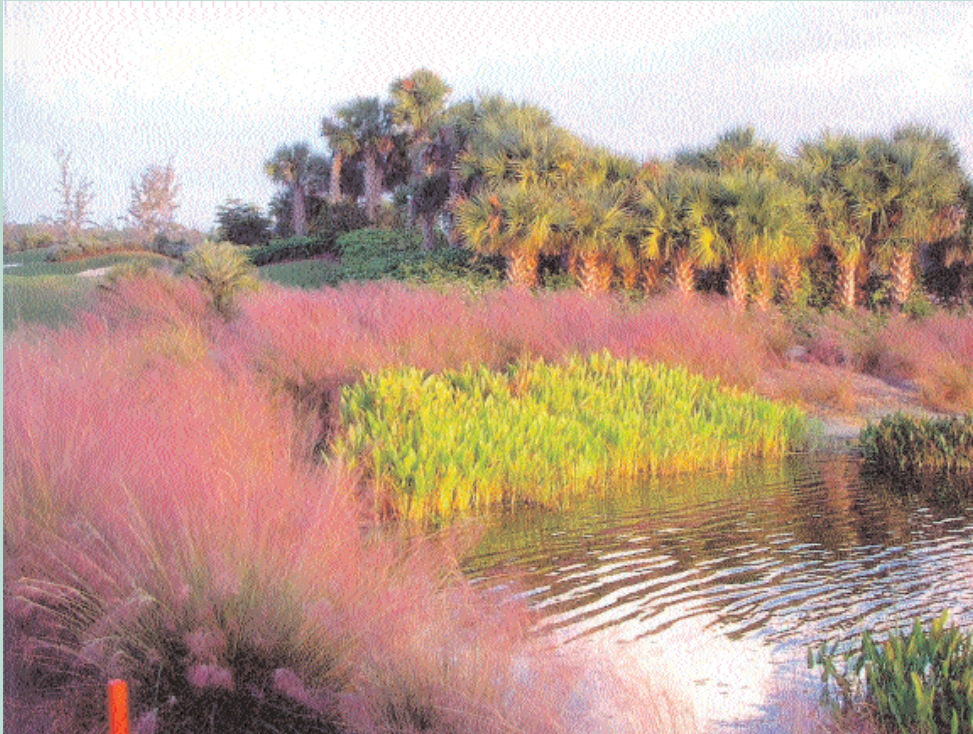


Better composition. Subjects are closer. Blank wall space is minimal. This photo can be easily cropped to fit into the column space in a magazine. Photo by Joel Jackson.

A good suggestion is to eliminate the presenter altogether from the photo, unless it is someone famous or someone who rarely ever appears in chapter photos. The focus of the story is the recipient. Keep it dignified, but have fun with it too. Remember, when you have the camera, you're the boss of the photo shoot. Above are examples of poor and better composition of the Grip & Grin photo.

2003 Photo Contest Results

This is part three of presenting the four category winners of the 2003 photo contest.



First Place - "Lake Bank Plantings" by Trevor Brinkmeyer, Shadow Wood CC, Naples



Second Place - "Fountain Grass along No. 4 Tee" by Tom Biggy, Bent Tree CC, Sarasota

Category 3 - Native Areas

2004 Photo Contest Categories

Category 1 - Wildlife on the course: includes any critter on the course that walks, flies, swims, slithers or crawls.

Category 2 - Formal Landscaping: includes annuals and ornamental shrubs and trees planted in formal beds on the course or club entrance.

Category 3 - Native Areas: includes beds of native plants including trees, shrubs and grasses used in naturalized areas to reduce turf inputs and aquatic vegetation plantings used to create habitat and protect water quality.

Category 4 - Scenic Hole: includes any view of a golf hole (panoramic or close up) that demonstrates the scenic beauty of a golf course.

Easy Rules

1. Color prints or slides. Prefer prints. Only one entry per category. Digital images: Digital image entries must be taken at a resolution setting of 300 dpi or higher and saved as Jpeg or Tif format images. Images taken, saved and sent at lower resolutions will not qualify for the contest. If you're not sure. Send a print instead.
2. Photo must be taken on an FGCSA member's course. Photo must be taken by an FGCSA member or a member of his staff.
3. Attach a label on the back of the print or slide which identifies the category, course and photographer. **DO NOT WRITE DIRECTLY ON THE BACK OF THE PRINT.** Each print shall be attached to an 8.5" x 11" sheet of paper using a loop of masking tape on the back of the print. Slides should be in plastic sleeves for easy access for viewing. Digital images must be accompanied by the same information in an email or document on a CD.
4. A caption identifying the category, course and photographer should be typed or printed on the sheet of paper below the mounted print.
5. Judging will be done by a panel of FGCSA members not participating in the contest.
6. Mail entries in a bend-proof package marked "PHOTOS DO NOT BEND" to Joel Jackson, 6780 Tamarind Circle, Orlando, 32819. Entries postmarked after August 1, 2003 will be automatically entered in the 2004 Photo Contest.

Birdies and Bogeys

GREEN SIDE UP



Joel Jackson, CGCS

It's time for another round of birdies for those who pull off a good deed and bogeys for those who whiff their chances in our wonderful world of golf.

Birdie; no make that an eagle for Jim Nantz of CBS Sports, who admitted to a couple of thousand superintendents that the media has blown the coverage on how important golf maintenance is to the game. He promptly practiced what he preached by talking about the unsung heroes of golf and our national education conference on air at Torrey Pines.

Bogey to the ABC team covering the Accenture Match Play

event in La Costa. They showed pictures of the flood which inundated the holes on the course, but the only mention I heard of the crew's efforts was the typical

"the superintendent and his staff did a nice job this week" uttered by Tim Finchem. Meanwhile, one doofus was praising the PGA Tour officials acting as referees for the matches as the nuts and bolts that make this thing happen. Say what?

Birdies to the Georgia Golf Course Superintendents Association and the Cactus and Pines GCSA in Arizona for getting their golf course owners associations, club managers associations and state golf associations together to work on the issues facing golf. Awesome.

Bogeys and Double Bogeys to the golf course owners in Florida who can't even support their own Chapter of the NCGOA. Maybe when the GCSAA and NCGOA get together in Orlando in February 2005 for the new Golf Industry Conference and Show they will get the hint.

Birdies to the North Carolina Legislature. It took the Turf Council of North Carolina and their supporters like the Carolinas

GCSA awhile, but they got \$650,000 budgeted to go to the turf-grass center at North Carolina State University annually. If they can respond to a \$2.5 billion dollar turf industry like that, just think what Florida should get at \$4.4 billion.

Triple bogeys to the governor of South Carolina. Word is that his state budget proposal cuts out all funding to Clemson University's turf and ornamental programs including extension. Has this guy ever heard of Myrtle Beach? Got to give a bogey to our Florida legislature with their annual budget cuts to IFAS. Agriculture has helped pull Florida through the slow economy, and for that they get sucker punched.

Birdies to all certified Audubon Cooperative Sanctuary courses. Thanks for being proactive and a good example of golf's environmental stewardship, and an eagle to the superintendents paying the ACSP dues out of their own pocket.

Triple bogey to the club that won't cough up the \$150 annual dues. I'm embarrassed for you. What is it, one buck per golfer? And bogeys to the rest of the clubs that just don't get it. We're in tough environmental times and this program can help you and the whole

industry. Get on board.

Birdies to the Florida Department of Agriculture and Consumer Services (FDACS). They get it. They know agriculture is the state's most reliable economic performer during good and bad times. They seek scientific answers to issues and don't let rhetoric muddy the picture. Plus they work with all stakeholders on the issues.

Bogey to the county health official spreading the story of a baby's death in New England from trace amounts of arsenic in the tap water. Turns out it was homicide and intentional poisoning. Arsenic is a serious issue, but let's deal with facts and not misinformation.

Birdies to all of you dedicated guys and gals out there in golf maintenance. Nobody really knows how much you care or how hard you try to give the people what they want.

But I have to throw a bogey on your score card if you aren't also making the case for your value to the club. If you aren't following a business plan or communicating frequently with the movers and shakers then you are risking disqualification.

In the real game of golf there are no mulligans.

....continued from page 54

There was Dr. Ken Payne at Michigan State University, Bob Williams at Bob O'Link Golf Club, and Bruce Sering at Glen View Club. All of these fellows were great leaders and I learned much from their leadership styles. It was evident that they had the skills to steer the ship in the right direction.

5 Skills of Leaders

Communicating

Great leaders communicate their position well. All those around them know where you are coming from. You cannot over-

communicate. Keep all those around you informed.

Interviewing

Great leaders surround themselves with great people. They know how to ask the right questions and do the right background work to assemble a successful team.

Observing

This area of leadership skills would include being a superb listener. Listen to what the golfers, staff, and industry, etc. has to say. You must not only observe by listening but also by watching. Be visible on your golf course. Find people doing something right and let them know it.

Negotiating

Understand how to negotiate win-win situations. Work toward compromise when solving problems. Pick your battles and don't win the battle and lose the war.

Sharing Recognition

The final skill is that of sharing rewards and recognition with your peers and staff. Celebrate successes! You wouldn't be successful without those who surround you. Let them know how important a role they play.

Great leaders share the common thread of being able to visualize and create a vision for the future. They communicate that vision to those around them. They

are very capable of making good decisions and giving appropriate directions. They do the right things. They realize that those around them have contributed to their success and recognize them accordingly.

When we think of leaders, it is easy to come up with names of coaches, CEOs, and political leaders. However, we must remember that each and every one of us is a leader in our own right. We lead our own teams (staff). All of the aforementioned skills are important to each and every superintendent. It may be true that these skills don't come easy to all but they will if you work at them!

It's hard to beat the performance of TMI turfgrass varieties!

For Successful Seeding,
call . . .



Butch Gill 706-302-7333
Joe Baggett 251-990-4911
Roy Bates 239-566-9006

Michael Bonetti 561-357-3286
Bodie Boudreaux 251-752-0198
Jeff Fitzpatrick 904-616-9031
Pete Giauque 678-797-1400
Billy Griffith 407-323-9042
Brent Holmes 404-467-7872
Richard Kirkland 863-698-8328
Roger Welker 772-260-0282
Glenn Zakany 239-267-7575



Compare test results of proven overseeding grasses and you'll notice similarities. V.I.P. 3 Turf Type Perennial Blend is a combination of quality and performance...and at an amazingly affordable price. Contains #1 ranked varieties. Available in specific overseeding formulations. Varieties chosen for outstanding ease of transitioning, and genetic dark green color. Contains endophytes.



PIZZAZZ promises to set the standard for the next decade. Its dark green color and dense turf make it an attractive choice for parks, home lawns and golf courses. Clonal selections contained high levels of endophytes, and this synthetic variety is lower growing than many older varieties.



Paragon is in a class all of its own. In fact, we are so certain that you will want Paragon in your turf program because of its superior turf qualities, we have taken measures to ensure that once you see Paragon for yourselves that you will be able to readily get seed for this coming fall season. It's that good. Better color, finer texture, improved disease resistance. Paragon - the professionals choice.



Private and university trials have shown Cypress to be a premier overseeding grass. Cypress Poa trivialis establishes fast and can be cut close immediately, even after overseeding. As your Bermudagrass goes dormant, Cypress will provide the finest dark green putting surface with no interruption in play. Cypress is tolerant to shade and damp soils. This unique prostrate growing variety thrives in cool weather and will survive cold weather that will damage Turf Type Ryegrasses. But most important, Cypress will maintain its dark green color all winter long. As the weather turns hot in the spring, Cypress will die out naturally as your Bermudagrass begins to grow. Cypress will not choke out your Bermudagrass in the spring as some heat tolerant Perennial Ryegrasses do.



TMI has spent years developing StarDust to be more disease resistant and is one of the darkest commercial Poa trivis for better color matches with some of today's darkest green ryegrasses. University overseeding trials in Florida and Arizona have shown StarDust is setting the next standard that other Poa trivis can only hope to achieve!



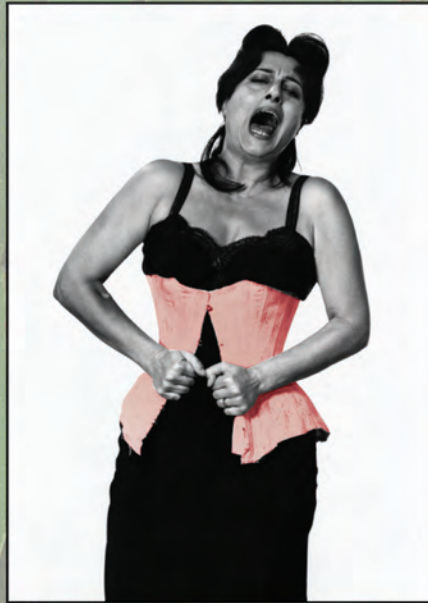
Created to meet the specific needs for seeding athletic fields, lawns, and golf courses. Establishes quickly and performs well under moderate to low fertility. Barracuda will grow under a greater variety of conditions than other grass seed, even on soils very poor in lime. Barracuda is a perennial grass with a creeping habit of growth, darker green than common redtop. Drought tolerant, dense turf with excellent mowing qualities.

Perfecting Turfgrass
Performance.™



33390 Tangent Loop
Tangent, OR 97389
Phone: (541) 926-8649
800-421-1735
Fax: (541) 926-4435
www.turfmerchants.com

Quality...Support...Value



With Nucrane, you can still get all three...

WHEN IT COMES TO PROVIDING SOLID QUALITY, SUPPORT, AND VALUE. THE OLD INDUSTRY JOKE USED TO GO... "PICK ANY TWO"...

NOT SO WITH NUCRANE. HERE WE ARE ABLE TO PROUDLY PROVIDE QUALITY JOHN DEERE EQUIPMENT, UNPARALLELED SERVICE SUPPORT, AND NEW FACTORY INCENTIVES GEARED TO PROVIDE YOU THE CUSTOMER WITH THE MOST COMPETITIVE PRICING EVER.

FOR A TRUE "TRIPLE PLAY", CALL US.

2020 SEABIRD WAY
RIVIERA BEACH, FL 33404
(561) 842-0440

72104 CORPORATE WAY
1000 PALMS, CA 92276
(760) 343-0270

6361 INDUSTRIAL BLVD
LAS VEGAS, NV 89118
(702) 263-4512

QUESTIONS/COMMENTS?
EMAIL DIRECT TO:
JDMAIL@NUCRANE.COM



NUCRANE MACHINERY

www.nucrane.com
www.deere.com



JOHN DEERE