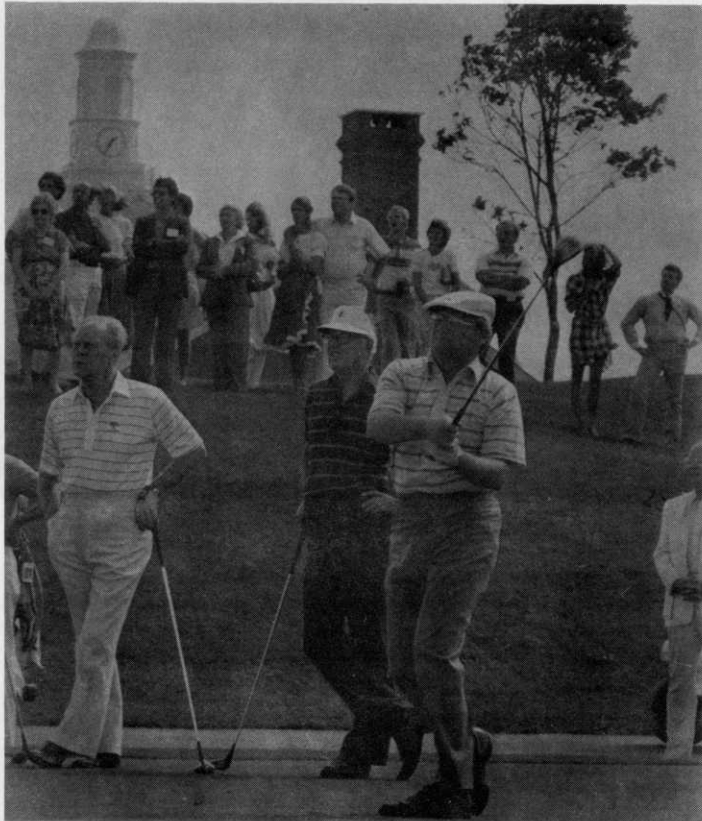


WHAT A PRICE TO PAY!

We all know that the prices of various goods advance at different rates. Some will shoot ahead, while some will remain static. What would happen, though, if you took the price trend for the last five years and projected it to the next 10 years, or to the year 2001?

That is exactly what Manplan Consultants, a Chicago-based management consulting firm, has done in a recent study. Here are projected prices for various goods based on their price trends in the past 10 years (are you ready?)

	1973	1977	1987	2001
Low priced car	3,000	5,000	17,700	105,000
High priced car	6,500	12,000	55,320	471,240
Private college tuition	3,000	3,840	7,219	17,510
Average house	34,500	54,000	191,160	1,134,000
Bar of soap	.15	.35	3.01	61.12
Toothpaste	.39	.79	4.89	62.80
Rump roast (lb.)	1.49	1.49	1.64	1.89
Ground beef (lb.)	.89	1.19	2.57	7.54
Coffee (lb.)	.70	3.25	163.86	39,642
Jelly (small jar)	.25	.59	5.28	113.98
Sunday Newspaper	.30	.60	4.38	70.92



PGA Tour Commissioner, Dean Beman, driving from 1st tee.

(Continued from page 38)

fairways. It will persist for years in decaying turf debris, and if he's looking for it, a pathologist can find latent *Curvularia* in almost any turf sample.

Because *Curvularia* is so similar to *Helminthosporium*, those fungicides which control *Helminthosporium* will generally control *Curvularia*. The most effective compounds seems to be Daconil and the Mancozeb fungicides (Manzate 200, Dithane M-45, or Tersan LSR). Other fungicides which have been used include Actidione, either alone or in conjunction with Terraclor or Thiram. We don't feel that the cadimium fungicides are particularly effective against *Curvularia*.

Because *Curvularia* is so prevalent in stressed or dying tissue, at one time several turf pathologists considered it to be a major factor in Bermudagrass Decline. Subsequent investigations, however, have resulted in the conclusion that it is not a primary cause of Bermudagrass Decline. It is frequently found in "declining" greens, but probably as a saprophyte or secondary pathogen.

When *Curvularia* is diagnosed as a pathogen in a fading green, the superintendent must first ask himself what is the real, underlying cause. Its presence indicates that something else is wrong. The fungus itself should be treated, but for full, lasting recovery, the primary cultural disorder must also be addressed. Many times this year the weather has aggravated an already existing problem in the root zone. As a result, the lush, well-fed grass plant could not support its foliage properly, and *Curvularia* invaded the weakened tissue. Thus, in order to control this disease, the superintendent must combine the use of proper chemical controls with fundamentally good turf maintenance practices. ■

Wesco-Zaun/Toro Announce Michael Swanson Outstanding Salesperson Award

Wesco-Zaun, distributor of Toro products for the west coast of Florida, has announcez that Michael Swanson has been honored as the Southeastern Regional Master Salesman for Toro Commercial Turf Products. Swanson was presented a special blazer for most outstanding Toro turf products salesperson in the Southeastern United States at the annual Toro Distributor Convention on August 2 in Minneapolis, Minnesota, headquarters for Toro.

Swanson is currently the President of the Florida Turf Grass Association and represents Wesco-Zaun and Toro in cities, counties, municipalities and parks on the west coast of Florida. ■