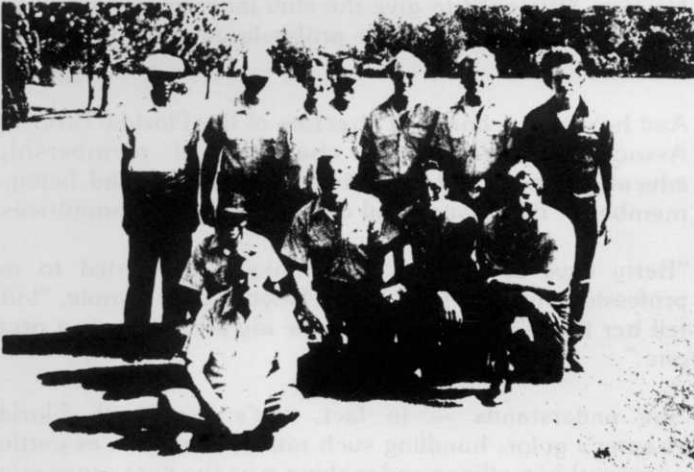


(Continued from Page 55)



Grounds crew at San Jose Country Club.

"GCSAA offers the golf industry a powerful tool to work with to find these answers. I'm committed to work towards making GCSAA fulfill its potential." ■

STRAIGHT SHOTS

Death and taxes may always be with us but death doesn't get any worse.

No matter what happens there's always somebody who knew it would.

If you think nobody cares if you are alive, try missing a couple of car payments.

Speak when you are angry and you will make the best speech you will ever regret.

Few things help an individual more than to place responsibility upon him and to let him know that you trust him.



West Coast Buccaneers



By REED LeFEBVRE
Pines & Palms Management Corp.

When you speak of taking care of greens top dressing rates among the top priorities. But along with everything else, the cost of performing this necessary function has gone way up! Supers who have top dressed with a top-dress mix, on a regular basis, are having a hard time justifying the cost of this material.

Our costs for equipment, labor, and materials have far out-paced our income, consequently we have to find newer and more economical ways of accomplishing the same ends. One way many are now using is the substituting of regular white or trap sand for top-dressing. With its cost at about half of what a mix would run, it seems to be the logical answer. There are those circumstances when you have to use a mix, either for the organics, or to have amendments such as charcoal etc. in an easy to apply form. Conversations I have had with Superintendents who use one or both, found the majority felt very good about the results of straight sand as a top-dressing.

John Luper at Countryside Country Club prefers a mix but uses sand in his top-dressing every three weeks program. He used top-dressing along with light verticuting, and has been on this program for three years.

At Clearwater Country Club, Joe Clay uses an 80/20 mix when he top-dresses lightly each month.

Sugar Mill Woods where Richard Mann is Superintendent, was using builders sand but found it to be a little too fine. Now he is using a 90/10 mix just when aerifying.



Lee Todd at Dunedin Country Club uses a 90/10 mix four times a year. He uses the 90/10 very lightly. Lee likes to use his core processor for top-dressing material when he aerates.

At Plant City Golf and Country Club we have been using trap sand with good results. The only drawback are the occasional pea sized chunks in the sand. We are planning to screen our sand or perhaps look into D.O.T. spec sand which I understand is pretty well screened when you get it. We are now using a vicon spreader to top-dress, and as long as there are small rocks in the mix we have to drag it in to remove them, where we had no chunks, dragging was unnecessary, as about five minutes of irrigation settles the sand right down in. ■