

UNITY IN SOUTH FLORIDA

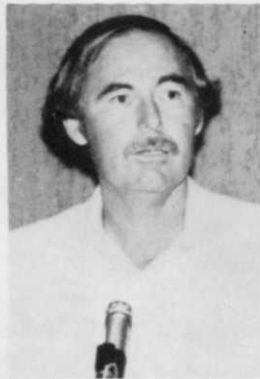
The golf industry had tremendous growth in the past decade. No area in the nation can match the growth of the southern three counties of Florida's eastcoast. Dade, Broward and Palm Beach counties are now nearing the three hundred mark for number of courses. For decades South Florida GCSA was the only local association. But as the area grew, needs and desires changed. In 1976 the Tri-County GCSA was founded. Both associations are now affiliated chapters of the national GCSAA. The national GCSAA does not establish defined areas for a local organization. The overlapping of territory between the two local associations was a matter that needed to be resolved. Both groups were functioning in Palm Beach, Martin, and St. Lucie counties. Thus diluting the effectiveness of both associations.

A review of events in recent months is in order. South Florida GCSA suggested to its members in November 1978 that a decision was needed about a defined boundary line. South Florida GCSA would be located in Monroe, Dade, and Broward counties. Tri-County changed its board of directors in January to comply with national standards. Now all officers are golf course superintendents. February saw Tri-County become an affiliated chapter of the national GCSAA. In May Tri-County voted to change its name. The new name is Palm Beach Chapter GCSA. The word "chapter" was included to show support and affiliation with the state association. Also defined was a territory of Palm

Beach, Martin, St. Lucie, and Indian River counties. In June South Florida GCSA officially approved their territory as the three southern counties previously mentioned. This becomes effective January 1980 for South Florida GCSA, the end of their fiscal year.

Now that you understand what happened let's evaluate it for you individually. You as a golf course superintendent have been assigned a local association to be a member of. Which one depends upon where your club is located. Your home residence has no bearing. You can vote and hold office only in your local association. Anyone can always attend any meeting no matter where it is located. Commercial members can join any association they desire with no voting privilege. Any superintendent that joins either local association automatically becomes a member of the state association.

The decade of the 80's will see the golf course superintendent continue to be a proud profession. Management assignments will continue to broaden beyond our previous duties. The leadership displayed of a smooth mutual division of local territory by the two associations will be a successful kickoff for the future. Now we all know where the term "grassroots politics" comes from. We are all ready to move forward together and concentrate on just the "grassroots".



Participants in serious presentation of division of South Florida Golf Course Superintendents into two associations. Shown above left to right top row: Dan Jones, Leroy Phillips, Phil Amman, Bill Wagner. Second row: David Bailey, Tom Burrows and Alan Weitzel, Dick Lemmel and Fred Klauk.