

The South Florida Green

The Official Bulletin of the South Florida Golf Course Superintendents Association
 South Florida Green Phone: Days — (305) 793-0069 • Evenings — (305) 581-3976

BOARD OF DIRECTORS

ALAN WEITZEL.....President
Metro Dade Country Club Golf Courses

DAN JONES.....President Emeritus
Banyan Country Club

DICK LEMMEL.....Vice President
Doral Country Club

NEIL KALIN.....Secretary-Treasurer
Pembroke Lakes Golf Club

PHIL AMMAN.....Director
Bonaventure Country Club

BRAD KOCHER.....Director
Inverrary Country Club

KEN NICHOLSEN.....Director
Woodlands Country Club

TABLE OF CONTENTS

The Future of the LPGA..... 5

Creating a Challenge for Women Golfers.....10

Golf Course Superintendents.....16

An Interview with Karl Litten.....19

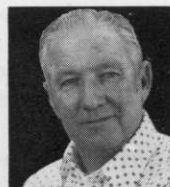
Golf: Where Is It Now?
 What's Ahead for the '80s?.....23



Dan Jones, C.G.C.S., Editor
Banyan Country Club



Dr. Max Brown,
 Associate Editor



Harry McCartha
Henderson & McCartha
 Photography



Dave Bailey
Atlantis Country Club
 Staff Writer

ABOUT OUT COVER

Shown seated, center, Betsy Rawls, LPGA
 Tournament Director.

Standing left to right Betty Burfeindt, Kathy Young,
 Mary Dwyer and Barbara Moxness.

Color Photograph by Harry McCartha

Contributing Editors:

Hubert E. (Al) Frenette
Peachtree G.C., Atlanta, Ga.

Fred V. Grau, Ph.D.
President, The Musser Foundation

Paul R. MacDonald

NOTICE: All correspondence concerning business matters, circulation, editorial and advertising should be addressed to the Editor, 7521 N. W. 12th Street, Plantation, Fla. 33313. Opinions expressed by writers in by-lined editorials are not necessarily those of this publication. "The South Florida Green" is published quarterly: the 1st of January, April, July, October. Closing date for advertising and copy is 45 days prior to publication. Not copyrighted. Please credit the author and "The South Florida Green."