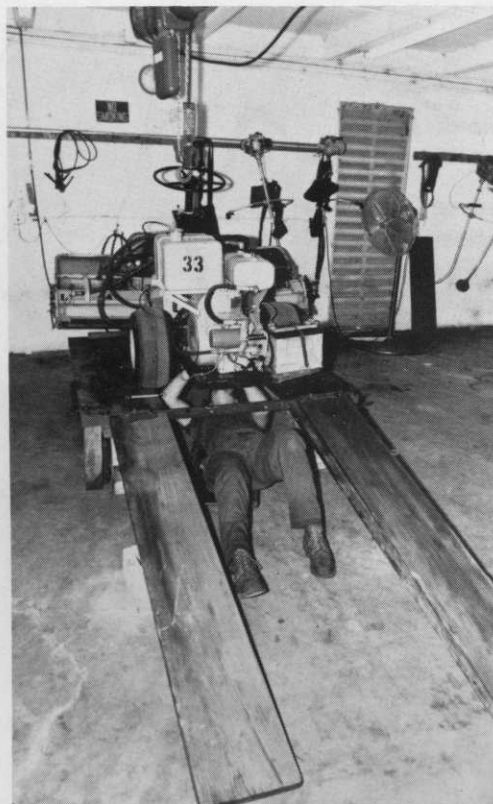
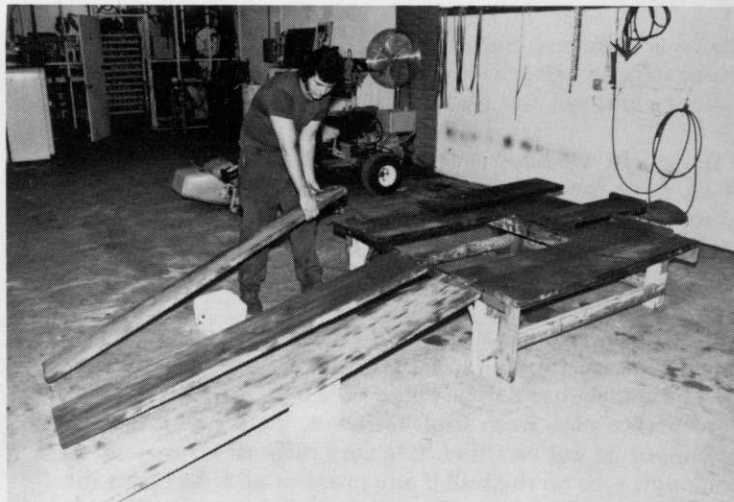


'SUPER' ideas

Innovative ideas by South Florida Superintendents and their staffs . . .



Here's a "Super" idea by our association secretary Neil Kalin and his mechanic John DeRose.

Neil's neat service facility needed a way to elevate equipment for servicing. With sturdy wooden timbers Neil and his people constructed the elevated platform shown here. The "ramp" pieces are adjustable and the entire structure is under an electric chainfall mounted on track.

Not only can mechanics work under the equipment but they are comfortably seated alongside as well.

(Picture story by Harry McCartha. Call us and share your ideas with others . . . we'll come to you.)