



# ***THE SOUTH FLORIDA GREEN***

---

VOL. 5

JANUARY, 1978

NO. 1

---



# The South Florida Green

The Official Bulletin of the South Florida Golf Course Superintendents Association

## BOARD OF DIRECTORS

Leroy Phillips ..... President  
*General Development Corporation Properties*

Tom Burton ..... President Emeritus  
*Coral Ridge Country Club*

Dan Jones ..... Vice President  
*Aventura Country Club*

Fred Klauk ..... Secretary-Treasurer  
*Pine Tree Country Club*

Phil Amman ..... Director  
*Bonaventura Country Club*

Vince Spano ..... Director  
*Atlantis Country Club*

Alan Weitzel ..... Director  
*Dade County Parks & Recreation*

## CONTENTS

President's Message .....	1
GCSAA President's Invitation .....	2
GCSAA Conference and Show .....	3
Certification for Members .....	4
How to Succeed as Greens Chairman .....	6
Can You Top This? .....	8
Chemically Speaking .....	9
Super Ideas .....	11
The Modern Superintendent .....	12
Recently .....	14
Pine Tree Golf Club .....	15
Supers Should Get Involved .....	17
Ask The Doctor .....	18
Continuing Education Thru Night Training .....	21
Newsletter .....	23
Editorial .....	24



Dan Jones, Editor  
*Aventura Country Club*



Dr. Max Brown,  
 Associate Editor

Susan F. Edwards, Editorial Supervisor  
*Aventura Country Club*

### Staff Writers:

Dave Bailey, *Breakers Country Club*  
 Guy Williamson, *Woodmont Country Club*  
 Harry C. Lincoln III, *Boca Raton Hotel & Club*

### Photography:

Harry McCartha, *Henderson & McCartha*

### Advertising:

Guy Williamson — Broward County  
 Mike Dmytriw — Dade County  
 Scott Sincerbeau — Palm Beach County

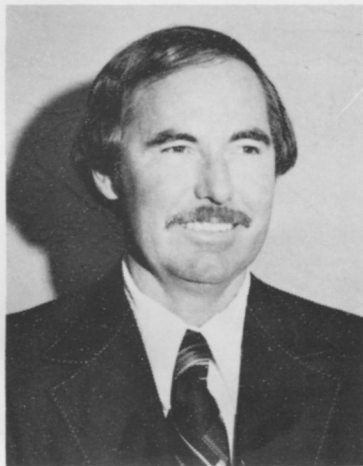
### "ON OUR COVER"

13th Hole of Pine Tree Golf Club, Story on Page 15.  
 Photographed by Harry McCartha.

---

NOTICE: All correspondence concerning business matters, circulation, editorial and advertising should be addressed to the Editor, 7521 N. W. 12th Street, Plantation, Fla. 33313. Opinions expressed by writers in by-lined editorials are not necessarily those of this publication. "The South Florida Green" is published quarterly; the 1st of January, April, July, October. Closing date for advertising and copy is 45 days prior to publication. Not copyrighted. Please credit the author and "The South Florida Green."

## President's Message



Our responsibility as superintendents of our clubs is very important as we are liable for the largest expenditure the club incurs. These monies are spent to insure fine quality golf courses for the membership to play. The way we spend these monies relates to the quality of the courses we produce.

The purchase of fine quality equipment, that has low maintenance cost and large productivity, is necessary. This will cut cost and time. The same applies to the purchase of chemicals that control disease and pest problems.

To keep up with the newest chemicals, the latest equipment and up-to-date technology in cultural practices introduced to the market, we need current information. To obtain this information, we must rely on the various Professional Associations involved in our industry. These Associations are: *South Florida Golf Course Superintendents Association, Florida Turf-Grass Association* and *Golf Course Superintendents Association of America*. These Associations gather top educators in our field, and bring new information to us at trade shows and conferences.

The FTGA Conference was one of the best and most informative I have ever experienced. Those of you who attended will agree, I'm sure. The Golf Course Superintendents Association of America Conference is coming up in February, and likewise, has a fine program that will be beneficial to all in attendance. The dates are February 12-17, 1978.

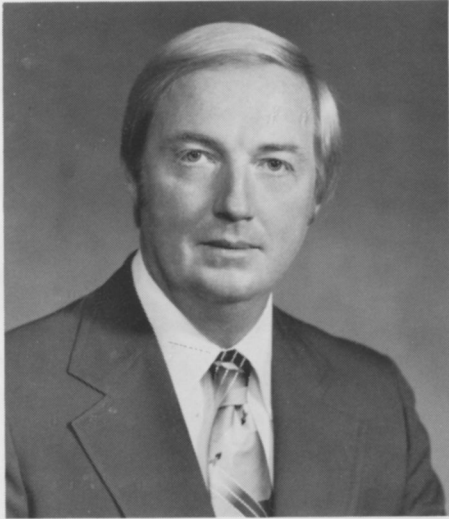
It is the responsibility of the club management to help us keep up with all the new information presented at these trade shows, so let your club know what is happening and by all means try to attend as many of these meetings and conferences as possible. You will benefit accordingly.

Hope to see you in San Antonio, at the GCSAA Conference and Show.

*Berney Phillips*



# PRESIDENT'S INVITATION



The theme for the 49th International Turfgrass Conference and Show in San Antonio, Texas, is "Economy thru Ideas." The success of this show depends upon your participation. I personally invite you to attend and share our greatest asset — ideas.

Economy in manpower, natural resources, and fiscal management is the goal of every superintendent. At the conference, sponsored by the only international organization of golf course superintendents, you are offered numerous ideas to help you provide the best possible product at the lowest cost in manpower, natural resources and money. The more members and other interested turfgrass experts that gather and provide input, the better are all of our chances of improving overall quality.

The cornerstone of the most important turfgrass event of the year is education. This year's conference will include four preconference seminars which begin Saturday, February 11. Qualified GCSAA members may take the Certified Golf Course Superintendent's exam on Sunday, February 12. To give you a greater opportunity to choose those areas that interest you most and that will afford you additional education, four general and two concurrent education sessions are presented throughout the five-day event.

Besides offering participants a warehouse of knowledge, the conference and show will feature more than 160 exhibitors displaying millions of dollars worth of the latest equipment, tools and ideas for turfgrass managers. The show will be held in the 130,000-square-foot San Antonio Convention Center Tuesday through Thursday, February 14-16.

Another function of the conference is to provide members the opportunity to decide the course that GCSAA will take for the next year. At the annual membership meeting on Wednesday, February 15, members can share their ideas and elect leaders to determine the Association's future.

We can all prosper from "Economy thru Ideas," and San Antonio will provide us an ideal setting for this most important event. Plan now to join the nation's other leading turfgrass managers.

*Theodore W. Woehrle*

Theodore W. Woehrle, CGCS  
GCSAA President



# GCSAA CONFERENCE AND SHOW

## Gives Participants "Economy Thru Ideas"

The 49th International Turfgrass Conference and Show, sponsored by the Golf Course Superintendents Association of America (GCSAA), offers the world's turfgrass managers an exciting and varied program of education sessions, industry exhibits, a golf tournament, the GCSAA annual meeting and election of officers and a golf course tour.

The six-day event, for which a record number of participants is anticipated, will take place February 12-17 in the 130,000-square-foot San Antonio, Texas, Convention Center, home of the 1968 *HemisFair*.

"Economy thru Ideas" is the theme for the conference, which will be a fountain of ideas. Numerous suggestions to help provide the best golf course at the lowest cost in manpower, natural resources and fiscal expenditure will be shared with participants through education sessions and an industry show.

Seven education sessions will feature 38 speakers from universities, industry and GCSAA. Presentations will cover Management, Public Golf — Owners and Operators, Research, Thinking Superintendent, Turf Management/North and Turf Management/South. Areas to be discussed include employee motivation, pesticides on the golf course, legal hiring and firing practices, working with civil service employees, using a stamp meter and common problems with zoning.

Besides offering participants a warehouse of knowledge through these education sessions, the conference and show will feature more than 180 exhibitors displaying millions of dollars' worth of equipment, tools and supplies for turfgrass management.

Earl L. Butz, secretary of agriculture under Presidents Richard Nixon and Gerald Ford, will deliver the key-

note speech, entitled "I Don't Want to Live in a No-Growth Society," at the opening session on Monday morning, February 13. Butz is now the dean emeritus of agriculture at Purdue University.

The 39th GCSAA National Golf Tournament will be played at three Corpus Christi, Texas, golf courses on February 9 and 10. The courses are Padre Isles Country Club, Corpus Christi Country Club and the Pharaohs Country Club. A victory banquet to honor winners will be held Friday night at the Corpus Christi Country Club.

The annual GCSAA membership meeting and election of officers will take place Wednesday afternoon in the Convention Center.

A tour of four area golf courses on Friday, February 17, will take some 500 golf course superintendents to Fort Sam Houston Golf Course (Dick Reardon, golf course manager); Oak Hills Country Club (Robert R. Wilson, superintendent); San Antonio Country Club (Roy Schneider, superintendent); and Willow Springs Golf Course (Harold A. Henk, superintendent).

### IECO

665 Mokena Drive  
Miami Springs, Florida 33166 / 305 888-8489



#### HYDRAULIC POWER 5/7 GANGS

5-unit 3.35 m (11 ft.)      7-unit 4.57 m (15 ft.)

- \* Hydraulic power allows one to seven units to be used separately or collectively
- \* Hydraulic power lifts all units in and out of work and drives all cutting cylinders.
- \* Heavy duty, 6-knife cutting units as standard or alternative floating head 8-knife cutting units for undulating conditions, especially recommended for golf course fairways.
- \* Forward and reverse drive to cutting cylinders. Reverse drive allows back lapping for maintaining a keen edge on the cutters.
- \* Height of cut ranges from 13mm to 90mm (1/2 in. to 3-9/16 in.)
- \* Positive and precise cylinder to bottom blade adjustment.
- \* Totally enclosed, precision cut gear drive to cutting cylinders.
- \* Designed for easy mounting to tractors having category 1 or 2 linkage, 1-3/8" diameter 6-spline pto shaft with suitable mounting for pump gearbox and minimum of 34 hp at pto.
- \* Floating Head units with front and rear rollers for the ultimate cut on fairways.

### WELL AND PUMP INSTALLATION

Specializing in  
Deep Well Turbine Pumps — Service and Repair  
Maintenance Program Available

**MAXSON**  
**WELL DRILLING, INC.**

3328 N. E. 11th Ave.      Oakland Park, Fla.

Phone 564-3419



# Certification

FOR MEMBERS OF THE GOLF  
COURSE SUPERINTENDENTS ASSOCIATION OF AMERICA

## THE CONCEPT

You are good at your job as a Golf Course Superintendent, perhaps the best. You know it, and so do some of your friends and associates, but how can you substantiate your claims?

In 1971, the GCSAA instituted a Certification program which may hold the answer for you. This program will provide the means by which your competence, knowledge and capabilities can be measured. This measurement can certify that through your training and experience you have acquired the qualifications and professionalism necessary to perform the tasks of today's Golf Course Superintendent. In addition, Certification will demonstrate that you have sufficient interest in your profession to expend the necessary time and energy to acquire such a prestigious rating, just as it increases your sense of professional confidence and personal accomplishment.

No longer will a club owner or club official be forced to rely upon a word-of-mouth reputation concerning your technical competence and then make a decision based only on that information.

## ELIGIBILITY

To be recognized as a stand-out in the profession, the Certification program is available to you if:

1. you are currently employed as a Golf Course Superintendent; and,
2. you have been a Class A member of GCSAA for at least two years.

The Certification process is begun when Headquarters receives your completed application form and a \$50 administrative fee. At all times, your application and progress is held in the strictest confidence. Although verification of your completed application information is compulsory, total discretion is maintained throughout.

## STUDY MATERIAL

Formal education is not a requirement of the Certification program, as practical experiences, dedication and your effort in preparing for the examination are equally important.

Select publications may be purchased directly from GCSAA after determining which, if any, items will be of particular interest and assistance to you in preparing for the following areas of the six-hour examination.

1. The GCSAA — history, ethics, purpose and procedures of the Association and the profession of golf course superintendency;
2. Golf — official USGA rules of the game;
3. Practical turf management — irrigation, fertilization, soil factors, the turfgrass plant, plant growth and basic calculations;
4. Plant protectant chemicals — pesticides — usage, safety, precautions, use limitations and application calculations;
5. Business administration — record keeping and application; budget preparations and methods of presentation;
6. Leadership — delegation, training, human relations, recruiting, supervision and public relations.

## EXAMINATION

The strength of any professional certification program — its value to the individual, his profession and employer — lies with the procedures utilized in documenting an individual's professional stature. Therefore, of prime significance to the GCSAA Certification program is the comprehensive six-part examination prepared by GCSAA's Director of Education.

Although you prepare for the tests at your own pace, a limit of one year from the date of initial Certification application approval has been placed on the successful completion of the entire six-hour examination.

When your application is approved, you will receive a list of volunteer examination monitors in your area. These monitors are respected members of colleges and universities involved in turfgrass courses. Their belief in objective testing and individual confidence is above reproach. At your request, GCSAA may approve some individual other than an educator in your area to act as a monitor for your examination.

At your convenience, you and a monitor of your choice will arrange the time and place for the actual examination and then advise the Headquarters of your plans. You will be permitted a total of six hours to take the initial examination.

Upon completion, the monitor will return the examination to the Headquarters office where it will be confidentially and anonymously scored by the Director of Education. Each section of the examination is scored separately. If any section is failed, only that section must be retaken, and all passing scores will be carried over until such time as all sections are passed. However, if the six sections are not satisfactorily completed within one year, all six sections must be retaken, and an additional fee will be necessary to cover administrative costs.

## DO IT NOW!

Contact Palmer Maples, Jr., Director of Education at GCSAA Headquarters, 1617 St. Andrews Drive, Lawrence, Kan. 66044. Mr. Maples will send you full details of the Program, an application plus your eligibility.

# Exhibit Space Sold Out For GCSAA's Conference & Show

Three months before its opening date in February, the original space allotted for the 49th International Turfgrass Conference and Show had been sold out. Additional space has been found to meet the demand.

The trade show, which will bring turf industry representatives from all parts of the world to San Antonio, Texas, is sponsored by the Golf Course Superintendents Association of America (GCSAA). The event combines educational seminars with the trade show, and is designed to familiarize superintendents with new products, methods and equipment that can promote better and more efficient golf course maintenance practices.

By November 1, 1977, the show had surpassed its exhibit sales record. Some 52,000 square feet of space had been sold to 180 companies. This is 7,500 square feet more than were sold altogether for the 1977 show in Portland, Ore. Thirty-three new companies have joined the

show so far, compared with only 22 in Portland.

James R. Brooks, director of GCSAA's new department of industrial relations, attributes these record sales figures to "the location, a slight economic upturn in the turf industry and also the more aggressive posture we are taking. For the first time, we have actively identified, contacted and followed up on new companies, rather than maintained the low profile we had in the past."

The exhibit hall will be open Tuesday and Wednesday, Feb. 14 and 15, from 9 a.m. to 5 p.m. and Thursday, Feb. 16, from 9 a.m. to 4 p.m. The opening day traditionally has been reserved for superintendents only to view the show. Monday afternoon, Feb. 13, has been set aside as distributors' day, when dealers can preview the show before it opens to the public. Special dealer passes must be obtained by exhibitors in advance of the show. Daily passes for other guests also will be available.

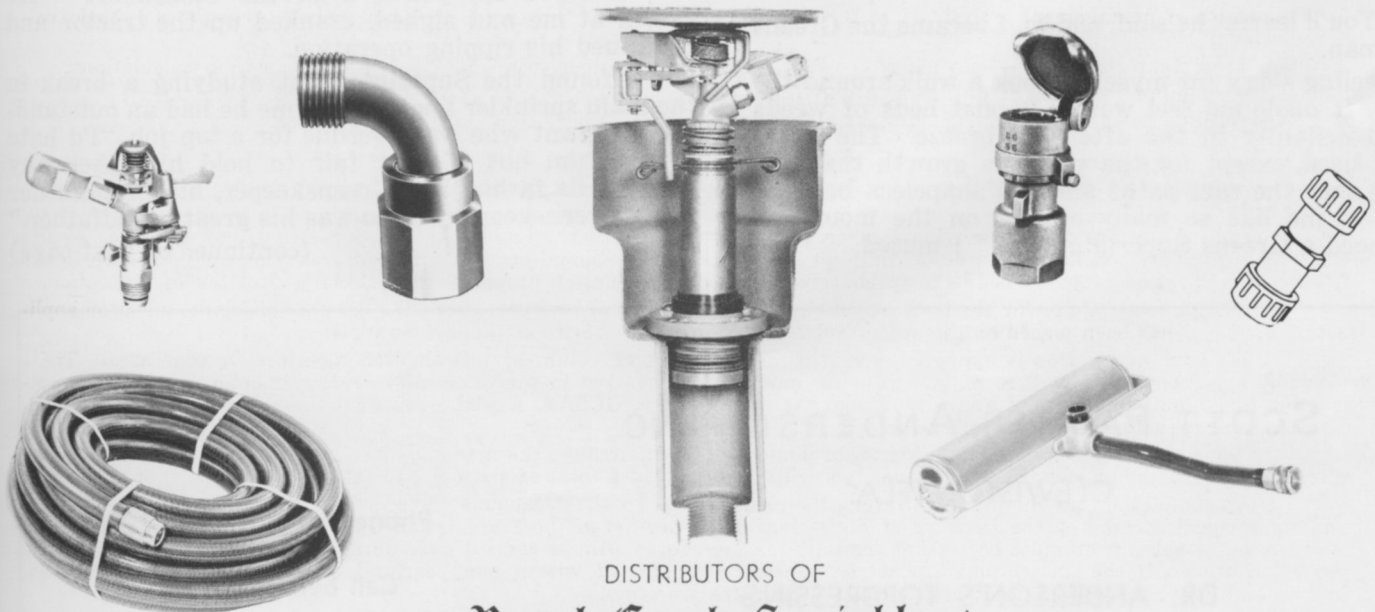
---

## SOUTHERN IRRIGATION SUPPLY

2223 HAYES STREET

HOLLYWOOD, FLORIDA 33020

(305) 921-4993



DISTRIBUTORS OF

**Royal Coach Sprinklers**

WE CARRY A COMPLETE LINE OF IRRIGATION EQUIPMENT.

TURF ACCESSORIES AND PARTS FOR ALL TYPES OF HEADS AND SOLINOID VALVES.



# How To Succeed As A Greens Chairman

By C. MICHAEL DUNN

Commodore Royal Palm Yacht and Country Club  
Boca Raton, Florida



Next to being a major league umpire I can think of no job as thankless as a Greens Chairman's. A Greens Chairman needs a thick skin, a green thumb, a soft heart, a hard head, a refillable prescription for sleeping pills and an unlisted telephone number. In a club with 400 golfing members he has 400 assistant chairmen, not including the wives, some of whom should count double.

The Greens Chairman must produce greens that will stop a flyer out of the rough within two feet of the hole. He must engineer the fairway grass long enough to make the ball stand up as if it were teed and yet roll 50 yards after it lands. It's his responsibility to limit the rainfall between the hours of 9:00 p.m. and 5:00 a.m. and never let it rain hard enough to close the course. He's expected to make a greens mower last indefinitely and a fairway mower even longer. Gadgets such as trucksters, weed eaters, sodcutters and rototillers are looked upon by the Board of Governors as unnecessary frills.

Now I hate yard work. I have always hated yard work. I don't see eye to eye with things that grow. When I look at flowers they wilt. Born on a farm in Northern Michigan, I've always been grateful to my father for having the good sense to move to Chicago where most of the land is covered with concrete. So, when the Commodore of our club tapped me for the Greens Chairmanship I rebelled.

"Look, Mr. Commodore," I said with all the persuasiveness I could muster, "I couldn't make a petunia grow in the Garden of Eden."

"That's O.K." he said, "we don't need petunias. All we want is some nice green grass on the fairways and some even nicer and shorter grass on the greens."

"But," I pleaded, "I don't really know a . . . ."

"You'll learn," he said, and so, I became the Greens Chairman.

Feeling sorry for myself, I took a walk around the course. It made me feel worse. Robust beds of weeds nodded defiantly in the afternoon breeze. The grass looked tired, except for the vigorous growth that was taking over the cart paths and the shapeless bunkers stared at me like so many craters on the moon. "I must need a Greens Superintendent," I mused.

Unlike plumbers or doctors, Greens Superintendents don't list themselves in the yellow pages, so I decided a good place to look would be on someone else's golf course. All Greens Superintendents are nocturnal; just why they can't sleep like normal humans escapes me at the moment, but armed with this bit of insight I arrived at a nearby country club at dawn. The place was a beehive of activity. "How the hell did I get involved in this slave labor business," I wondered just as a tractor whizzed by.

"Watch yourself there, Buddy," the driver yelled over the roar of the engine. He was pulling what looked like a heavy farm disc cutting deep slits in the soil. In places it tore up big chunks of turf making the fairways look like great green noodles laid side by side.

I caught him the next time around. He turned off the engine and swung around on the metal seat. "I'm the Greens Chairman of the club down the road. You the Superintendent here?"

"You'll find him over on the next fairway," he said.

"Tell me," I said, my curiosity getting the best of me, "How come you're tearing up the course? Are they gonna make a subdivision here?"

"Nothing like that," he said, "I'm wiping out the nematodes."

"What are nematodes?"

"Did you say you're a Greens Chairman?" He looked at me and sighed, cranked up the tractor and continued his ripping operation.

I found the Superintendent studying a break in the main sprinkler line. He told me he had an outstanding assistant who was overdue for a top job. "I'd hate to lose him but it's not fair to hold him back any longer. His father is a Greenskeeper, his grandfather was a Greenskeeper and so was his great grandfather."

(continued on next page)

SCOTT, PALMER, ANDERSON, INC.

CLEWISTON, FLA.

Phone: 1 - 813 - 983-7255

DR. ANDERSON'S TOPDRESSING  
QUALITY ORGANICS FOR QUALITY GOLF COURSES

Call before 8:00 A.M.

## GREENS CHAIRMAN (continued)

"Sounds like the whole family is demented," I said.

"Probably so," he answered, "but you don't have to be to get into this business because it'll drive you there soon enough. You'll find out. Lot's o' luck."

The new Superintendent arrived two weeks later, on the first of the month. We toured the course together. "Do you think we have any nematodes?" I asked.

"Well," he said, "I don't want to hurt your feelings the first day on the job but it looks to me like this is the international headquarters for nematodes and I'd say right now they're holding their annual convention."

"We have some weeds, too," I said, weakly.

"Yeah, and bermuda mites."

"Let's go back to the barn," I said. "Maybe we can contrive a plan to deal with the whole problem."

We poured ourselves some black coffee from a pot that simmers all day on the far corner of a workbench. Then we sat down to drink coffee, argue, make notes, and draw sketches until late into the afternoon. I knew what the members wanted, or at least I thought I knew. To translate that into a golf course that would make them happy we decided to retain a recognized golf course architectural firm. This would assure us the needed course changes would be done professionally. Fairway bunkers, from years of raking and maintenance work, had become uninteresting, round, cavities, and the shape of the greens had lost their character. The lethal yellow epidemic had taken a toll of over 700 coconut palms, so there was plenty for an architect to do.

Then we decided to retain one of the leading agronomists in the Southeast to make monthly visits of inspection. Our abundant crop of goosegrass and other assorted irritants added to the nematode and bermuda mite population gave him plenty to do, too.

My assignment was to hold the membership at bay and to persuade the Board of Governors to supply the funds we needed to do the job. Being Vice Commodore and a member of the Board helped some, but it's not easy to explain to an owner of a super market chain a criminal lawyer, a C.P.A. from Detroit, an industrial architect, a business consultant turned college president, and a vice president of marketing for an international oil company, why it costs so damned much to mow the lawn!

"Ye GODS!" they'd cried in unison, "All you gotta do is mow some grass, rake some sand and kill a bunch of weeds! How in hell can that cost a quarter of a million dollars?" So I, too, had plenty to do. When I asked for (and finally got) \$50 an acre to kill the nematodes they almost accused me of personally infestating the course.

"We never heard of nematodes before you took this job."

My first victory over the Board came when I pried a Triplex greens mower, and 100-gallon sprayer out of them in spite of their claim that I already had more equipment than the Florida State Highway Department. Sand to refurbish all the fairway bunkers, \$6,500 worth, came a little

easier. I delayed my request for \$10,000 to install a liquid fertilizer system until the House Committee Chairman planned a request for new chairs for the country club dining room. We formed a coalition and maneuvered both through successfully.

But the big problem still lay ahead. Golf course beautification doesn't come cheap, especially when an extensive tree planting program is a part of it. Using reverse strategy, when it came my turn to make the Greens Committee report at the November meeting I stated, simply, "The Greens and Grounds Committee makes no request for funds." I received a standing ovation.

Meanwhile, thanks to my Greens Superintendent, the nematodes were gone along with the bermuda mites. The crowfoot was dead and so was creeping charlie and there was a thick carpet of bright green grass on the fairways. The greens were smooth, putted true and were newly shaped. Some of the bunkers had been rebuilt and there was fresh sand in them and in all the bunkers around the greens.

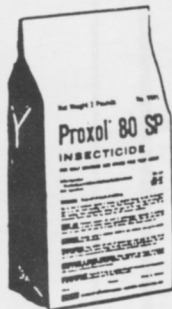
So, in the December meeting I hit them for \$40,000 to beautify the course. There was hardly a whimper.

I'm the Commodore now, so I appointed myself to the job for another year. I know goosegrass when I see it; in fact it haunts my dreams at night. I can distinguish between dollarweed and dichondra. And I know what MSMA will do and why, sometimes, we add a little 2-4-D. After we spike the greens, if I see a little brown grass around the hole I know there is a tiny worm down in there just awaiting evening so he can come up and feast on those tender leaves of Tiftdwarf. So I'm gonna apply for the job again next year. After all, I wouldn't want all that hard earned knowledge to go to waste. Besides, it's easy . . . when you've got a top quality Greens Superintendent calling all the shots.

But I still hate yard work.

### TUCO

Programmed Turf Care with PROXOL 80 SP Insecticide  
and ACTI-DIONE THIRAM Fungicide



## PROXOL® 80 SP

For Worm and Grub Control

## ACTI-DIONE THIRAM

For Disease Control



BILL J. MAXWELL, TUCO, Div. of Upjohn - (305) 395-4323

CAN YOU TOP THIS? . . .



DEAD GRASS IN ARTISTIC CIRCULAR PATTERN

Answer on page 23



## Liquid Ag Systems, Inc.

The Leader In

**QUALITY LIQUID FERTILIZERS**

and

**Injection Systems for Golf Courses**

Ed Darlington

Dan Brunetti

1010 NorthWest 15th Avenue

Pompano Beach, Fla. 33060

**(305) 971-0022**

## CONROY & McCAULEY

Distributors For

**W. W. GRAINGER, INC.**

Motors • Tools • Equipment

**AMERICAN LUBRICANTS CO.**

Oils • Greases • Tire Guard

**ROTARY MOWER PARTS**

Engine Parts • Mower Blades

Filters • Mufflers • Controls

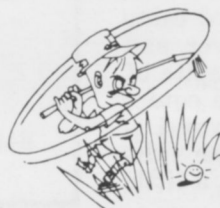
**FOLEY MANUFACTURING CO.**

Grinding Equipment • Parts

ALSO

BELTS • BEARINGS • TIRES

POLY PRO CORD • CHAIN



Call or Write for Catalogue

1131 N. E. 23rd STREET  
POMPAHO BEACH, FL. 33064

Phone: 946-8685



# "CHEMICALLY SPEAKING"

by TOM LAMBERK  
Woodbury Chemical Company

## CALIBRATION OF YOUR PESTICIDE EQUIPMENT

The use of pesticides in the turf industry is an accepted practice. The successful use of pesticides depends largely on how precisely they are applied. Used improperly or carelessly, the results can be disastrous. Applying too little or too much chemical can result in unsatisfactory performance and greater cost. Users should calibrate their applicator prior to its initial use and periodically check the calibration during operation. Many factors cause variation in the rate of application, such as speed and size of orifice.

Your sprayer should be thoroughly and properly cleaned, properly equipped and checked. The entire system, including spray tanks, hoses and pumps, should be thoroughly flushed with water to remove loose rust particles, oil, or dirt. A clean, properly operating sprayer can save many costly delays during the spraying operation.

The calibration of the sprayer should be done on your golf course shortly before spraying to make certain that your conditions are the same as those which you will find during the actual application. This is why accurate calibration of equipment is so important.

There are different methods of calibrating equipment. The following way is fairly simple and is commonly used:

- 1) Measure off a known distance such as 100 ft. (or more).
- 2) Fill the sprayer with water to a known mark. Then spray the measured area at the same speed and pressure that would be used in the actual application of pesticides.
- 3) Refill the tank to the known mark, measuring carefully the amount of water used.
- 4) Calculate the gallons per acre by the following formula:  

$$\frac{43,560 \times \text{gallons used}}{\text{Distance} \times \text{Band Width}} = \text{Gallons per acre}$$

You might find a second method simple and handy:

- 1) Before you start — Check your equipment. Are all nozzles and screens the same size and free of trash? Are all nozzles putting out the same rate? Check by catching spray for each nozzle for a specific period of time.
- 2) Measure off 100 feet in the field where spraying is to be done.
- 3) Record time in seconds it requires spray rig to travel measured 100 feet.
- 4) With sprayer stationary, catch and record amount of spray (all nozzles should be putting out same rate) from one nozzle for the number of seconds as recorded in Step 3.
- 5) Measure band width, then multiply ounces of spray recorded in Step 4 by the appropriate band width factor. This answer gives total gallons per acre applied broadcast. NOTE: To figure width of 1 nozzle band for broadcast application, use distance between nozzles on spray boom.
- 6) Add the required amount of pesticide on a broadcast acre basis to the total gallons applied broadcast (found in Step 5) regardless of whether you are using band or broadcast treatment.

### CONVERSION FACTS

#### For Sprayer Calibration for 1 Nozzle — 100 Foot Run

Band Width In Inches	Factor
6	6.81
7	5.82
8	5.10
9	4.53
10	4.08
11	3.72
12	3.39
13	3.15
14	2.91
15	2.73
16	2.55
17	2.40
18	2.28
19	2.16
20	2.04

Many years of experience have proven that a variety of techniques and chemicals are necessary in the performance of any pesticide program.

There are many types of pesticides available today. More are being formulated and manufactured each year. Each of these chemicals was designed for a specific job that can only be accomplished if your sprayer is accurately calibrated.

# Get out of the water!

Weeds grow all the time, even when you don't have time for them.

We specialize in aquatics. We have the people, the equipment, the know-how and the time to do it right.

When we manage your water and shoreline areas, you spend your time on more important things.

*Serving golf courses throughout Florida*

## FLORIDA AQUATIC WEED CONTROL, INC.

Lakes and Waterways Management

320 South State Road 7  
Ft. Lauderdale, FL 33317

**(305) 792-1500**

### Golf Course Grassing

### Renovation

WE GROW  
AND  
INSTALL  
FLORIDA STATE  
CERTIFIED  
TURF-GRASSES

Experienced,  
Knowledgeable People  
Providing Only  
The Highest Quality  
Workmanship

*"Unconditionally Guaranteed"*

Over Seeding Grasses  
of All Varieties



Custom  
Fumigation

## Stan Cruse and Associates

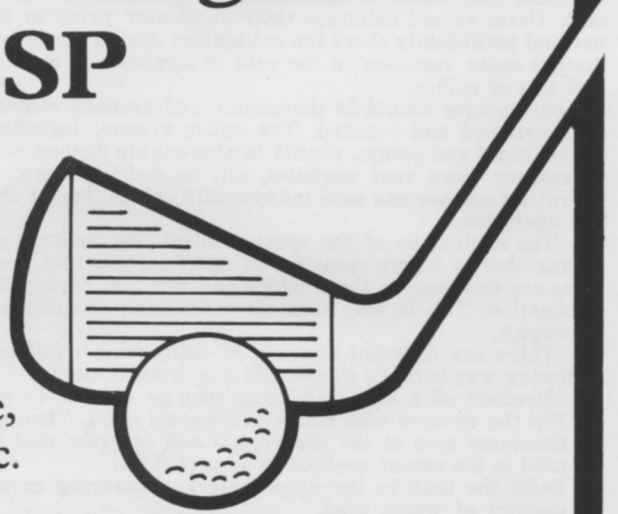
**(813-722-4547)**

Rt. 1, Box 402-X, Palmetto, Florida 33561

*A Division of Pursley Turf-Grass*

# Protect Overseeded Greens From Pythium Damage— Spray TERSAN<sup>®</sup> SP FUNGICIDE

Pythium can destroy your greens in a matter of days if you're not careful. But you can prevent pythium damage by spraying TERSAN SP properly. TERSAN SP is safe to use, gives effective, economical control, and is non-phytotoxic. Plus, TERSAN SP is very easy to use.



## Prevent Dollar Spot Damage with TERSAN<sup>®</sup> 1991 & TERSAN<sup>®</sup> 75 FUNGICIDE

Spray TERSAN 1991 in combination with TERSAN 75 to prevent possible development of tolerant strains of dollar spot.



**DU PONT** Turf Products  
REG. U.S. PAT. & TM. OFF.



# 'SUPER' ideas . . . . .

*Innovative ideas by South Florida Superintendents and their staffs . . .*

This month we show you answers to some water problems . . . "TOO MUCH" at Inverrary Country Club and "TOO LITTLE" at Coral Ridge Country Club.



1. Brad Kocher and Rick Hammond are shown with inexpensive "Catch Basins" their crew made from concrete pipe "culls." In picture 2. we see Brad inspecting drainage ditches dug by his workmen. Even the paved parking lots collect water . . . in picture 3. you can see drainage swales installed by Inverrary's crew. Picture 4. is "mosquito control rig" made by Brad's mechanics. These shots show graphically that our members do more than GROW GRASS!



At Coral Ridge the problem was low water pressure as 3 turbine pumps drew water from small lake. Inefficient system had evolved from many add-ons over the past years. In picture 5. you can see the workmen starting to "untangle" the pipes. In picture 6. you see the 14" "header-pipe" being tailor-made to couple the pumps. In picture 7. you can see the finished product looking much better and working great!

*If you or your crew have any ideas to share with others give us a call and we'll be glad to photograph your "super ideas."*  
— Harry McCartha





**Nutrient deficiencies,  
weeds, diseases,  
thin turf, insects.**

For the superintendent  
who has everything . . . or  
anything . . . or who just wants  
to make a good thing better . . .  
ProTurf offers research tested,  
golf course proven professional  
turf products.

Just give me a call.



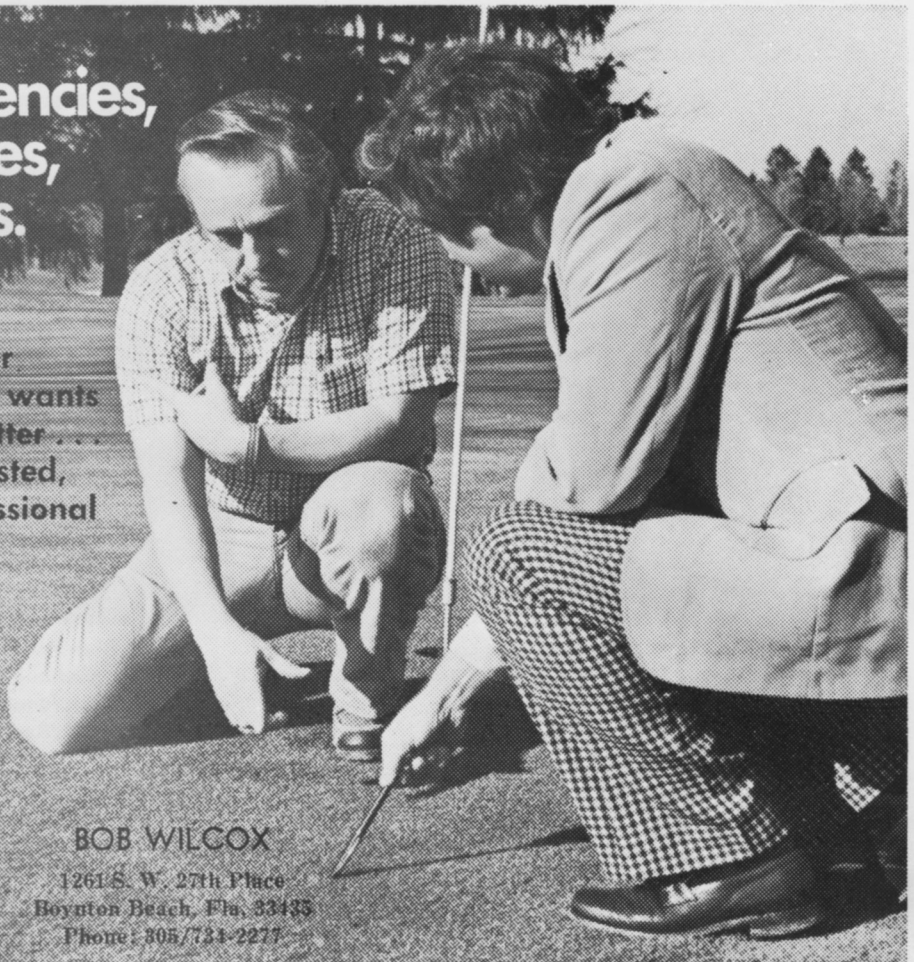
A division of  
O. M. Scott & Sons

**JERRY MILLS**

8506 N. W. 23rd Manor  
Coral Springs, Fla. 33065  
Telephone: 305/753-1593

**BOB WILCOX**

1261 S. W. 27th Place  
Boynton Beach, Fla. 33435  
Phone: 805/731-2277



## **COMMERCIAL ENGINE & EQUIPMENT CO.**

337 S. W. 14th AVENUE    POMPANO BEACH, FLORIDA 33060

The Budget Stretchers . . . **GUARANTEED**

### **Remanufactured Exchange ENGINES**

### **Kohler - Wisconsin - Onan - Omc**

CALL COLLECT

## **305-781-2228**

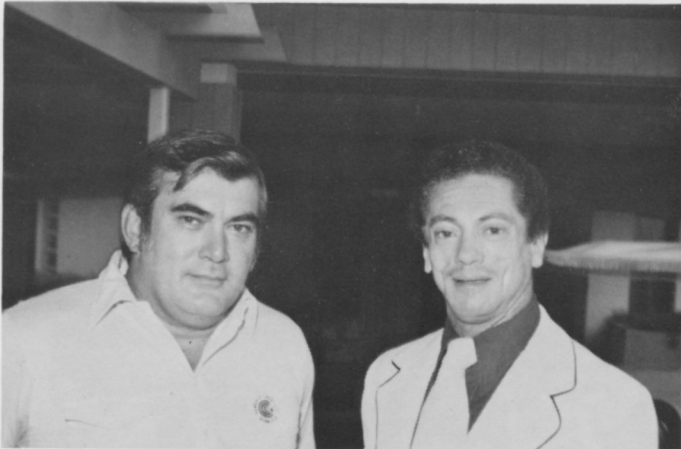
### **Free Pickup & Delivery**

BROWARD - DADE - PALM BEACH - MARTIN COUNTIES

### **"We Ship Anywhere"**



# Recently...



Kendale Lakes Golf & Country Club was the site of our October Meeting. Hosted by Richard Cartwright and Dieter Silber.



Tom Mascaro was presented with a "Special Edition" of the South Florida Green. Standing by are (left to right) Dan Jones, Tom Burton, Dorothy Mascaro, Susan Edwards, LeRoy Phillips, Tom Mascaro, Tony Mascaro.



November Program Participants:  
Front row: Hans Schmeisser, Joe Konwinski, Tom Mascaro. Rear row: Mark Mahannah, C. C. Show, Tom Burton, Program Chairman of S.F.G.C.S.A.



Hosts for the November Assn. Meeting at Jacaranda. Wayne Sloan, General Manager Gulfstream Properties and Chuck Smith, Club Manger.

**LESCO**  of  
**FLORIDA**

Div. of Lakeshore Equipment & Supply Co.  
300 So. Abbe Rd., Elyria, Ohio 44035  
(216) 323-7544

**HOME OF LESCO PRODUCTS**

Replacement Parts  
Tires  
Batteries  
Lapping Compound  
Irrigation Supplies

Insecticides  
Fungicides  
Herbicides

Tee & Green Accessories  
Safety Equipment  
Rain Gear  
Pressure Washers  
Tire Changers

**LESCO**  Products Catalog Available On Request

PHIL GARDNER

BOCA RATON, FLORIDA

305 994-0122



# CHANDLER INDUSTRIES

PRECISION SHARPENING  
AND REBUILDING OF  
CUTTING UNITS  
ON ALL  
TURF EQUIPMENT

*Serving Dade, Broward  
and Palm Beach Counties*

285 N.E. 185th Street #11  
Miami, Florida

Bus. (305) 651-1148  
Res. (305) 264-0995-

# Woodbury Chemical Company

*"THE SERVICE SUPPLIER"*



LLOYD M. GRAY  
GEORGE JONES

PRINCETON, FLORIDA  
305/247-0524  
1-800/432-3411

# Pine Tree Golf Club

By DAVE BAILEY

"The best flat course in the world" . . . With the natural terrain of South Florida this could be said of several courses, but it generally refers to one; Pine Tree Golf Club in Delray Beach. The club was constructed in 1962 along Military Trail on what was then flat cattle grazing land. Golf Digest rates it in the top twenty clubs in the nation, and is architect Dick Wilson's highest rated course.

Two of the finest meetings held by our association in recent years have been hosted by Pine Tree. Our secretary, Fred Klauk, is golf course superintendent. Robert Dorian is club manager, and Bob Ross is the golf professional.

Fred Klauk has been superintendent since January, 1975, moving there, after serving at Johns Island Club in Vero Beach. Fred is a graduate of the University of Florida.

This past summer, the Pine Tree staff working with Patton Seed Company, replanted all the greens at the club.

Fred Klauk says, "We replanted greens for three reasons; our members wanted Tifdwarf Bermuda greens, removing Tifgreen 328." (Contaminated with foreign grass, mostly ormand from the fairways. "Amendments were made to the soil, adding sand to the muck for better drainage and adjusting the contours," he concluded.

The greens are overseeded this winter with Penn-cross Bent at a rate of five pounds per thousand square feet. The greens vary in size from forty-five hundred to nine thousand square feet, the average being seventy-five hundred.

Great clubs generally have loyal members and Pine Tree is a leader. Membership is limited to 350 and there is a waiting list at all times. Golf's Hall of Fame member, Sam Snead, is one of the select number.

The course record from the 6600 yard middle tees is a sizzling 63, scored by Ed Tutwiler. Pine Tree will be host club for 1978 U.S. Senior Amateur championship next September. Low handicap golfers are put to a real test from the 7190 yard championship tees.

Pine Tree has a real country club feeling . . . Its stately colonial clubhouse atop a man-made hill sets the tone.

Touring this great layout one is struck by the high degree of maintenance and the bunkers 131, in all sizes, shapes and depths.

Dick Wilson's other two great courses of the same era, "Doral's "Blue", and J.D.M. "East" have a bit more water than Pine Tree, however, the trap placement seems a bit tougher. Low handicapper, superintendent Fred Klauk, concurs that the second shot on each hole is important, and at Pine Tree even more so. To reach the greens, the player must carry sand-traps on sixteen of the eighteen lush greens.

Seeing Pine Tree will add to your golf education . . . if ever the opportunity is yours, do not let it pass.

# MALLINCKRODT

The Complete Line... The Quality Line

## Turf Products



**FUNGO®** Prevents and controls turf diseases without discoloring fine turf.

**CADMINATE®** Economical — effective — for dollar spot, copper spot, red thread. Even for fairways.

**CALO-CLOR®** Great mercurial fungicide for snow mold control.

**KOBAN®** Absolute "tops" for Pythium control.

**KROMAD®** Broad spectrum fungicide controls five major turf diseases plus minor ones.

**PRE-SAN®** Pre-emergence herbicide for crabgrass, goosegrass, poa-annua control.

**VITALON®** Turf colorant — instant life-like color for dormant or off-color grass and foliage.

**AURAGRASS®** Turf Dye to "touch-up" off-color grass or as spray "indicator".

**CALO-GRAN®** The dry granular mercurial fungicide for snow mold control.

**THIRAMAD®** 75% Thiram fungicide.

**TREX-SAN®** Broad spectrum broadleaf herbicide. Controls or eliminates more than 35 broadleaf weeds.

**PO-SAN®** Unique growth retardant for post-emergence fairways poa-annua control.

**SPRAY-HAWK®** Calibrated mobile turf sprayer for accurate, uniform, fast turfgrass spraying.



**Mallinckrodt**

**MALLINCKRODT, INC.**

St. Louis • Jersey City • Los Angeles

"See your nearby  
Mallinckrodt Representative"

**JOHN BIRK**

#12 Bonsai Drive, Delray Dunes  
Boynton Beach, Florida 33436 (305) 732-2245

## AV FUEL SYSTEMS CO.

Miami, Florida

PHONE (305) 667-0663

J. C. (JIM) THOMPSON

Sales/Service

**CLAYTON**

**AUTOMATIC CONTROL VALVES**

(CLA-VAL)

Golf Course Sprinkler Systems

Water Treatment Plants

Waste Disposal Systems — Well Fields

Water Booster Systems

COMPLETE SERVICE & INSTALLATION

PARTS AND VALVES IN STOCK

AVAILABLE

# ATLANTIC

## SULPHUR COATED UREA

For That Deep Long Lasting Green  
Without Excessive Growth  
**ATLANTIC SULPHUR COATED UREA**  
Is the Answer!

Ask Your Atlantic Representative for the  
Formulations Available

**ATLANTIC Fertilizer & Chemical Co.**  
Homestead, Florida

In Dade 247-8800 All others 1-800-432-3413



# Course Operation...

## Supers should get involved

By DAN HALL, JR.

There are numerous groups within a community to which a person can belong. Most are associated with fraternalism and-or group assistance in some type of service to the area in which its members live. These are fine, well and good. We heartily endorse all such benevolent groups. When and where he has the time, your golf superintendent should be part of such community interested associations. They need him.

But, as a general rule, most golf course superintendents are thought of by the vast majority of club members as a person whose prime and sole purpose in life is to be seen in, on, and around the links busy at work in some turf-related activity. As fast as this vocation is growing with almost daily changes by the governmental agencies, as well as in chemicals, fertilizers, machinery and management, the up-to-date golf course superintendent must keep himself and his club informed of these problems and changes, and make himself aware of how to go about making the changes, and solving the problems.

The only way this can be done cheaply, and economically is membership in turf-related, primarily golf turf, organizations.

Your superintendent should first, be very active in his local area's superintendent's association. Then, the two state associations-Florida Turf-Grass Association, and the Golf Course

Superintendents Association of Florida. On the national level, he should be an active member of the Golf Course Superintendents Association, in his class, and advance in the classes as he becomes eligible.

All dues, travel, and meals one spends money for should be reimbursed from allocated funds planned for within the budget. They say a doctor who doesn't read much, attend professional seminars and study continuously will become completely useless seven years after his internship, because of advancements in the field. This is probably just about the same for a non-progressive golf course superintendent. The entire chemical and fertilizer field, and nearly all the equipment requirements, have changed immensely since the fuel oil crisis of three years ago.

A golf course superintendent not up to date on these changes is wasting your money. If your club maintenance facility and-or chemical procedures are ever government inspected, and violations are found, it could cost the club thousands of dollars in penalties and fines.

Generally speaking, dues in these groups vary, but here are some round figures:

To belong to the local association, and the travel for the year could run between \$50 and \$100.

To belong to the Florida Turf-Grass Association, it would cost \$60 a year for dues, and \$100

to \$200 a year for the annual conference.

For the Golf Course Superintendents' Association of Florida, dues are \$5.

To belong to the Golf Course Superintendents Association of America, there are \$90 dues, plus \$300 to \$1,000 expenses, including airfare depending on the location of the national meeting.

Your finance committee will probably say "Too much." Just one fine by OSHA (Occupational Safety and Health Administration) could cost the club thousands of dollars. One misuse of chemicals injuring an employee, member, guest or even neighbors, yards or miles from the golf course could amount to hundreds of thousands of dollars in fines and possible legal suits.

After October 21, 1977, your superintendent must hold a qualified license recognized, both state and federally, to even own pesticides on the Environmental Protection Agency's restricted list, much less use them on club property. The superintendent is the one holding the license, not the golf club.

Now I ask you, is it too expensive to keep your superintendent actively engaged in a continuous educational program through dues, meetings, magazines, bulletins, and newsletters to make him better able to serve you and your members?

On the other hand, if your superintendent says he is too busy, that he doesn't get anything

our of attending these meetings, or any other excuse about not having time or he can't get away from the job for not joining his peers, then, if he worked for me, I would watch him closely. And when I felt that he was going to get my club, or me, in serious trouble, turf-wise, or any other way, I'd quickly replace him.

There is no way that a superintendent today can isolate himself as the old times did 20 or more years ago, and be giving his club dollars worth of values in services received. There's just not any way.

The golf superintendent today must be actively engaged in keeping abreast of all the many changing facets in his occupation that involve many required fields of expertise. Today's golf manager just doesn't water, fertilize and mow grass. He is a specialist, of which there are only 12-13,000 people in the whole U.S.A that are qualified to fill his job. This makes him a special man among men. He must participate to remain so. See that he does.

*Dan Hall is golf superintendent at Countryside C. C. in Clearwater. He is vice president of the Florida West Coast Golf Course Superintendents Association and has been in the business more than 20 years.*

Reprinted from  
"Florida Golfweek"

### ATLAS PEAT & SOIL, Inc.

P.O. BOX 867

BOYNTON BEACH, FLA.

CALL  
COLLECT

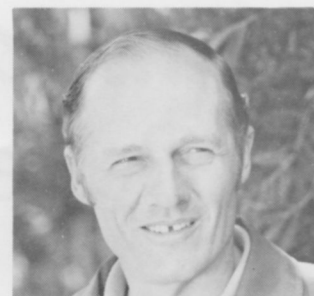
1-305-732-8959

Top Dressing . . . Top Soil . . . Trap Sand



# ASK THE DOCTOR

By MAX A. BROWN, Ph.D.



Dr. Max A. Brown

**Q. I have just discovered that my greens have a soil p.h. of 8.3. How can I lower the p.h. to a reasonable level? Dade County.**

**A. Soil p.h. of 8.3 is extremely high and will cause nutritional problems, especially involving the micronutrients such as zinc, boron, iron, manganese and copper.**

My approach would be to first check the soils and irrigation water for conductivity (soluble salts) and levels of calcium and sodium. If a problem exists with the irrigation water, some type of treatment may be necessary or an alternate supply will be required. High soluble salts and/or high sodium are severe problems.

A common situation in your area is that irrigation waters contain high levels of dissolved calcium carbonate or limestone. Each time you irrigate you lime the soil.

The regular use of acid-forming fertilizers is important. This means using fertilizer materials in which the nitrogen source is primarily ammonium nitrogen.

Soil p.h. can be effectively adjusted downward with applications of elemental sulfur, preferably in the granular form. The sulfate form of sulfur has virtually no effect on soil p.h. It is the chemical and biochemical oxidation of elemental sulfur to sulfate sulfur which is the acid forming reaction.

Granular sulfur can be topdressed on putting green turf at five pounds of material per thousand square feet (5 lbs./m.). It must be watered in well. There is some burn danger with this material in warm humid weather at rates above 5 lbs./m. Applications can be as often as every three months, however, twice a year is the usual recommendation.

The number of sulfur applications required to reduce soil alkalinity by one p.h. unit varies considerably from one soil to another. The amount of organic matter, clay content, and water quality are the major determining factors. However, on a light sandy soil with low organic content, five pounds of sulfur should reduce soil p.h. by one half a unit. Total amounts applied must be based on results of a reliable soils laboratory.

**Q. What type of preventive fungicide program should be established on overseeded greens of blended perennial ryegrasses? Boca Raton.**

**A. Ryegrasses should be planted either with Koban or Terrazole treated seed or the chemical applied as a drench immediately after seeding. Seven days after seeding an application of one of the above chemicals or Tersan SP should be applied to check any "damping off" (Pythium spp.) development in the newly emerging seedlings.**

Applications of Fore, Daconyl 2787 or a similar broad-spectrum fungicide every 14 days should be adequate preventive control through the season. Keep some Koban, Terrazole or Tersan SP on hand to use when conditions are right for Pythium development and for curative treatment.

**Q. What can be done to control white grubs in bermu-grass turf? Ft. Lauderdale.**

**A. Dr. James Rinert, Entomologist at the Agricultural Research Center, University of Florida in Ft. Lauderdale has been conducting extensive research into the control of these insects for the past three years. He has found that the presently recommended chemicals (Diagion and Baygon) have given poor control for most species of grubs. As a result grub populations have built up considerably in Broward County over the past few years.**

Dasanit at 2.5 pounds of 15 G per thousand square feet gave quite good control. The best control was obtained with an experiment chemical, Ceiba-Greigy 12223. Hopefully, this material will receive a turf label by Spring of 1978, so that we will once again have an effective control of these damaging insects.



## Florida Silica Sand Co.

DADE  
949-3521

• SERVING FLORIDA •  
SINCE 1948

BROWARD  
923-8323

- SPECIAL GOLF COURSE MIXES FOR YOUR PARTICULAR NEEDS
- STERILIZATION ALSO AVAILABLE — FLASH FLAME
- #70 TRAP SAND IS A COURSE WHITE SILICA SAND
- Pine Bark Nuggets — Cypress Mulch — River Gravel — Log Edging





It's not just  
the W.I.N.  
you use,  
it's how you  
say the name  
**par ex**<sup>®</sup>



All water insoluble nitrogen (W.I.N.) fertilizers are not alike. Some are activated by soil bacteria. Others by temperature. But IBDU<sup>®</sup> (31-0-0) and PAR EX fertilizer mixes with IBDU are activated very slowly by soil moisture. Nitrogen is released at a controlled, even rate that can't be hurried by high temperatures or excessive moisture.

It's important on high maintenance turfgrass to control the level of nitrogen feeding. Excessive bursts of nitrogen can be a greater problem than a nitrogen deficiency.

Custom formulated to exacting specifications of the professional turfgrass manager, IBDU and PAR EX fertilizer mixes with IBDU provide a controlled level of nitrogen nutrition that stimulates root growth, shoot density, rich green color and improves overall plant hardiness.

Let water insoluble IBDU (31-0-0) and PAR EX fertilizer mixes with IBDU perform for your turf. After all, performance is the name of the game.

## A NEW ADDITION TO JACOBSEN'S FAMOUS LINE OF MOWING EQUIPMENT



Jacobsen has combined two proven, dependable, time tested products with hydraulics to give you the first complete hydraulic mowing tractor — Jacobsen HF15.

The HF15's hydraulic reels provide you with excellence of cutting on formal turf with high and low range reel frequency.

And to help you maintain a regular mowing schedule, the Jacobsen HF15 also cuts in soft and wet ground conditions.

Out front mowing for time saving maneuverability and patented reel unit suspension for full articulation and smooth cut.

### DE BRA TURF & INDUSTRIAL EQUIP. CO.

1551 South 30th Ave.  
Hollywood, Florida 33020

921-1919 Hollywood  
659-4533 Palm Beach

Miami 947-5443  
Deerfield 427-7616



# Continuing Education Through Night Training

by DAVID MILLER  
*Emerald Hills Country Club*

How many golf course manager, superintendents, assistants, crew members, etc., are so busy they can not spend three night hours a week broadening their intellectual horizon? Is there any person who wouldn't benefit from more education, even though many have convinced themselves otherwise. The enormous and rapidly-increasing, world-wide demand for education is one of the most important phenomena of our age. The growing number of educated people in our field today is not only making education vital, but it is now regarded as an essential commodity.

In the South Florida area we are fortunate to have an abundance of modern learning facilities. Anyone reading this article probably lives within a thirty mile radius of a college campus or an extension. In Broward and Dade County there are two four-year universities, two of the largest community colleges in the state, and several vocational institutions.

Broward and Dade Communities Colleges offer a broad spectrum of courses at very low tuition rates. Miami Dade and Broward Community College each have three campuses (North, South, Central) located within their respective counties. Both schools have technical curriculums awarding associate of science degrees relating to our line of work such as: Ornamental Horticulture, Pest Control Technology, and Business. Many of these individual courses are given at night, giving the working person a chance to attend. Although you may already have obtained a degree you could still benefit from taking one night class a week in a different curriculum. Business courses will coordinate well with a horticulture or turf degree to strengthen your performance on the job.

The University of Miami and Florida International University have excellent learning opportunities on a secondary college level. For most of us, the university is far too costly to attend on a part-time basis. F.I.U. concentrates on the last two years of a four year degree. Courses are offered there that can not be found at B.C.C. or Miami Dade. A turf grass curriculum is given which



Superior Fertilizer & Chemical Company

MAIN OFFICE:  
P.O. BOX 1021, TAMPA, FLA. 33601  
813-247-3431

FT. PIERCE PLANT: 305-461-2230

Dial Operator Mobile (305) 581-6123

LAMAR "SUNNY" SMITH  
mobile unit 2209

could fulfill the credits needed for a bachelor of science degree after graduating from a community college.

Vocational training is increasing rapidly. Students can now begin their occupational training in high school. Turf Grass Science and Ornamental Horticulture programs are now being taught at many high schools and even some junior highs. Students in these programs get technical class room knowledge as well as practical field experience by constructing and maintaining their own golf green or nursery. Teachers in the area have reported excellent participation and less absentees in these special classes. Vocational programs relating to our line of work being taught on the high school level will surround the industry with more skilled and knowledgeable people to continue the industry on the upward trend.

It is true that education is no substitute for actual field experience, however, with one complementing the other, they will combine to make the person concerned a professional in the industry and a more open minded individual.

When you think of MILORGANITE in South Florida we hope you will continue to think of us

Harry McCartha



Please note our new name and telephone number:

**HENDERSON and McCARTHA**

Phone (305) 751-3459

P.O. Box 380396 Miami, Fla. 33138

Golf Courses Use More

**MILORGANITE** 

Than Any Other Fertilizer

*With great consideration  
and more than passing thought —  
To the art of growing grass  
there's more than what is taught.*

*Seeing grass from its view  
may help to understand —  
Why withering up and dying  
is sometimes grass' plan.*

*Grass is like a woman —  
tenderness will work  
Along with gentle caring  
of beauty you should speak . . .*

*. . . What care if others hear you  
and tend to call you JERK.  
A wise man will remember,  
IF IT WORKS . . . IT WORKS . . . IT WORKS.*

—S. F. EDWARDS

## SEMINOLE TOP FLORIDA GOLF COURSE

The latest GOLF COURSE RATINGS released prove South Florida a great golfing area. *Golf Digest* November, 1977 rated America's 100 greatest golf courses. Six of our area clubs are rated in the *Nation's Elite One Hundred*. Even more impressive is the fact we have five clubs in the top forty. No other area in the nation has such a high rating of clubs within a fifty mile radius.

TOP TEN — Seminole Golf Club, North Palm Beach,  
Bill Whitaker, Supt.

SECOND TEN — Pine Tree, Delray Beach,  
Fred Klauk, Supt.

THIRD TEN — Jupiter Hills, Tequesta

FOURTH TEN — J.D.M. Country Club East,  
Palm Beach Gardens  
Carl McKinney, Supt.  
Doral Country Club, Blue, Miami  
Dick Lemmel, Supt.

SECOND FIFTY — Mayacoo Lakes Country Club,  
West Palm Beach  
Steve Pearson, Supt.

### OTHER FLORIDA COURSES RATED IN THE TOP 100

FIFTH TEN — Innisbrook Golf and Country Club  
Copperhead Course, Tarpon Springs

SECOND FIFTY — Bay Hill Club, Orlando, Disney  
World, Palm Course, Lake Buena  
Vista. Sawgrass Golf Club,  
Ponte Verda Beach



## NEWSLETTER

September 22, 1977

Our former image of a greens superintendent was an elderly gent in baggy khaki trousers, a perpetual scowl and a being incapable of communicating with other persons not belonging to the select few wise in the ways of soil, wind and weather. Not so today.

On September 13, Pine Tree hosted the regional section of Golf Course Superintendents of Florida. As the morning meeting convened we saw a group of professionals and business men, all young, well dressed and extremely good looking. Golf courses today may be used by the old, but are maintained by the young.

The group played golf in the afternoon, and our Fred Klauk was a bit off at 80. His brother had 78.



*black, rusty irrigation boxes belong in black, rusty grass.*

## Your turf deserves Plymouth boxes with "Ever-green" covers



Plymouth irrigation box covers feature molded-in green color. They blend in beautifully, eliminating cast iron or concrete eyesores in your turf.

Both box and cover are made of a strong, tough thermoplastic material developed specifically for underground use. They're lighter in weight, easier to handle and less brittle than cast iron or concrete enclosures.

The new 10" diameter box shown provides plenty of working area and features a twist lock cover. Boxes nest with or without covers for easy storage. Other models are available, including rectangular boxes with snap or pentagon locking mechanisms.

AMETEK, Plymouth Products Division, 502 Indiana Ave., Sheboygan, Wisconsin 53081. (414) 457-9435.

REPRESENTED IN FLORIDA BY:

**RICHARD DUNN  
R&D ASSOCIATES**  
502 N.W. 7th Street  
Delray Beach, FL 33444  
305-278-5271

# AMETEK

Irrigation Boxes are stocked at our Lakeland Warehouse for fast delivery throughout Florida.



*Answer to "Can You Top This?" . . .*

*Workers without training cannot appreciate the damage chemicals can create. Workers, probably testing the flow of a hand sprayer caused this circular burn in the turf.*

Slide Credit: Mike Dimetryw



# EDITORIAL

## THE INFORMED SUPERINTENDENT

How much money do you spend a year on R & D? Have you figured it out? R & D is Research and Development, of course, and the amount of money we're spending on R & D will be in direct ratio to how well we keep abreast and a little ahead of competition.

So . . . How much are you spending? It makes no difference whether you have a company or not. As an individual, it's important that we stay abreast and ahead of our contemporaries.

But it's a fact that most people spend very little on self-improvement. They see what the competition is doing and then follow suit. As a result, most of them are always dragging a year or so behind the leaders. That's why the leaders stay in front.

The top golf course superintendents belong to and attend the *South Florida Golf Course Superintendents Association*. They attend the yearly state and national conferences. It costs less than one thousand dollars to belong to the three organizations and to *attend* the state and national conferences.

There is an infallible relationship that exists between R & D and the top superintendents. The Superintendent with the best golf course is always the one spending the most on R & D.

Money spent for R & D isn't really money spent; it's money invested. And the return is generally higher to the company or person than any other sort of investment. Most golf courses don't spend fifty dollars a year on books or other materials of a kind calculated to make their superintendents smarter and more effective. They simply watch other club operations, and then follow in a kind of sluggish lock-step.

Every person in an organization can contribute to R & D, and with the right kind of leadership, many of them will.

So . . . How much is your club spending on R & D? By figuring that out, you can see into your clubs future as far as progress is concerned.

# USS Vertagreen... A product for all reasons.



For professional turf products you just can't beat the Vertagreen lineup. And this complete array didn't just happen. It's the result of many years of experience, testing and proven use—designed and formulated to meet every need and contingency.

USS Vertagreen products contain those extra pluses that separate them from ordinary turf fertilizers—like urea-formaldehyde

for sustained, long-term nitrogen release. There's potassium sulfate to provide needed sulfur for lush growth and a dark healthy color. And iron is available in chelated and fritted form. Add a complete guarantee of secondary and micro-nutrients and you have turf products that are second to none.

And backing this line of Vertagreen products are the best turf

teams in the business—your local Vertagreen distributor and a Vertagreen turf specialist. The two work together to help plan your tailor-made turf program and keep it running smoothly. And that makes it easy for you because when you want the best you just have to see the best—and that's your local Vertagreen distributor.

A product for all reasons.



TRADE MARK

## Agri-Chemicals

Division of United States Steel  
P.O. Box 1685, Atlanta, Ga. 30301

# THE E-Z-GO MAINTENANCE MACHINE



FOR FREE DEMONSTRATION CALL E-Z-GO SOUTH FLORIDA  
Ft. Lauderdale 772-6700 • Miami 945-1130 • W.P.B. 659-0144