

ON COURSE

THE MIDWEST ASSOCIATION OF GOLF COURSE SUPERINTENDENTS

July 2012



Midwest Association of Golf Course Superintendents
11855 Archer Ave.
Lemont, IL 60439

INSIDE

The Summer of 2012

Employee Training is Essential

MAGCS Scholars, Family Night
Picnic, Bullsheets and More.

PRSRST STD
US POSTAGE
PAID
FOX VALLEY, IL
PERMIT NO 313

ON THE GREEN, "ALMOST" DOESN'T CUT IT.

Jacobsen® Eclipse® 322: the industry's only
100% hydraulic-free riding greens mower.

When we say no hydraulics, we mean it. The Jacobsen Eclipse 322 provides greener operations and less maintenance to lower operating costs by up to 86%. Combined with programmable settings and individual reel control, you're assured perfectly manicured greens every single time. **Determine your course savings using our cost calculator at www.Eclipse322.com.**



www.Eclipse322.com

Burris
EQUIPMENT

www.burrisequipment.com



PGA

The Official Turf Equipment Supplier to The PGA of America and
The Exclusive Turf Equipment Supplier to PGA Golf Properties.
© May 2010, Jacobsen, A Textron Company.

JACOBSEN
A Textron Company

Lakemoor

27939 W. Concrete Drive
Ingleside, IL 60041
(815) 363-4100

Waukegan

2216 N. Greenbay Road
Waukegan, IL 60087
(847) 336-1205

Frankfort

10351 W. Laraway Road
Frankfort, IL 60423
(815) 464-6650

PRESIDENT

Bob Kohlstedt, Fox Bend G.C.

VICE PRESIDENT

Michael Mumper, Riverside Country Club

SECRETARY / TREASURER

Dave Groelle, CGCS, Royal Melbourne C.C.

EXECUTIVE DIRECTOR

Luke Cella

BOARD

Chuck Barber, St. Charles Country Club

Matt Harstad, Calumet Country Club

Matt Kregel, The Club at Strawberry Creek

Dave Kohley, Silver Lake Country Club

John Nelson, Merit Club

PRESIDENT EMERITUS

Dan Sterr, Stonebridge Country Club

COMMERCIAL REPRESENTATIVE

Eric Nadler, Nadler Golf Car Sales, Inc.

CLASS 'C' REPRESENTATIVE

Nick Marfise, Cog Hill Golf Course

TURFGRASS ADVISOR

Dr. Derek Settle

EDITORIAL CHAIRMAN

Chuck Barber

ASSOCIATE EDITORS

John Gurke, CGCS

Chuck Anfield, CGCS

GRAPHIC ARTIST

Mark Karczewski

Table Of Contents

AUGUST 2012 Volume 66 No. 4



If there is a good thing about a drought it is most of the golfers that come to our properties pull out of their driveways and see their lawns toasted. When they pull up to the golf course, they are amazed at the turf conditions presented to them.

FRONT COVER

The dog days of summer came early this year. Sam (Jake Mendoza's canine) takes a break from all the prep work for the Ryder Cup this summer. Jake's responsibility for the Ryder Cup is being the go-to-guy for every vendor and contractor that are on property for the event. No small task. Photo credit: Luke Cella

ON COURSE WITH THE PRESIDENT

3 Making an Impact in This Season
Luke Cella

FEATURES

5 The Summer of 2012
Bruce Branham

9 Employee Training is the Key to Efficiency
Josh Therrien

20 Tyler Carter -N- Kane County Cougars
Josh Therrien

DEPARTMENTS

10 the Bull Sheet
John Gurke

25 MAGCS in Motion
Charles Anfield



The Midwest Association of Golf Course Superintendents (MAGCS), founded December 24, 1926, is a professional organization whose goals include preservation and dissemination of scientific and practical knowledge pertaining to golf turf maintenance. We endeavor to increase efficiency and economic performance while improving and enhancing the individual and collective prestige of the members.

The MAGCS member is also an environmental steward. We strive to uphold and enhance our surroundings by promoting flora and fauna in every facet in a manner that is beneficial to the general public now and in the future.

All editorial and advertisement inquiries should be directed to Luke Cella, Publisher, *On Course*. 11855 Archer Avenue, Lemont, IL, 60439. (630) 243-7900 or visit www.magcs.org for rates and requirements. Statements of fact and opinion are the responsibility of the authors alone and do not imply an opinion on the part of the officers or members.

Be Prepared for the Tier 4 Mandate

The Environmental Protection Agency's Tier 4 diesel engine emission reduction mandate will soon have an impact at your course. Beginning January 2013, turf equipment manufactured in the 25 to 74 horsepower category must be Tier 4 compliant.



To comply with this EPA mandate, diesel powered equipment will require more sophisticated engine electronics and exhaust after-treatment systems. The increased design, manufacturing and component costs will make this new equipment more expensive. Contact your Reinders sales representative today to find out how Tier 4 will affect your course. They will help you evaluate various options available regarding your turf equipment needs and purchasing plans.

Reinders

Solutions & Supplies for the Green Industry

3816 Carnation Street | Franklin Park, IL
888.838.5778 | www.reinders.com

COMMERCIAL EQUIPMENT SALES

Joe Etten 630.284.8492 | Tim Snell 708.284.8497

Steve Stewart 630.284.8496 | Whitey Anderson 630.251.4832



Count on it.

www.toro.com/tier4



DIRECTOR'S COLUMN
Luke Cella, *Publisher*



Making an Impact in This Season

There is something to be said about being solid and secure, especially since human nature and the world are always changing. This growing season has been a challenge and continues to test each and every Midwest member. Whether this is your first season at a club, or your 20th something year at a course, the trials continue.

Most were happy for the March we experienced, getting a jump-start on wrapping up projects from the fall, and welcoming golf in short sleeves for the entire spring. With this fortuitous beginning, however, there lurked in the back of everyone's mind a question of the kind of summer it would produce. I just thought everyone would be tired come July, only because the amount of work (warm days and lack of rain outs) that took place in spring – I didn't think we'd see the tired out there now: The tired caused by lack of rain. The tired caused by holding hoses at all hours of the day. The tired caused by excessive heat. The tired caused by irrigation pumps, controllers, heads and water sources. The tired caused by the long range forecast. The tired caused by hoping a spray will last another day or two until you can get out there again. The tired caused by caring for the turf, like only you do on your property. The tired caused by the inability to sleep past sunrise. The tired caused by turf conditions that worsen instead of mend. The tired caused by seeing only the sick turf on 3000 square feet rather than all the healthy turf on the rest of the 120 acres. The tired caused by being too tired for anything enjoyable other than sleep.

Here's the thing, though. You can still be counted upon. You still show up for work everyday, often the first one there and the last one to leave. You create schedules for your crew, utilizing this resource in the best way possible. You give your staff days off and keep morale high by praising the work they do each day. You tweak your irrigation program conserving every last drop of water. You plan each day around the weather, scheduling tasks and programs. You calculate the best way to fertilize and feed the turf. You happily talk with members and golfers about their own lawns and give them sound advice. You tour the course each day to see what needs to be done, what needs to be improved, what can be done better.

Most could not do what you do, mentally, physically, or even emotionally. There are still a few weeks to go until that date in mid-August. That date that you look forward to each season where the days are noticeably shorter, the shadows a bit longer and pockets of cool air more common across your face on your morning tour. You are still at it, still caring, still trying to improve, still offering a place for respite and relaxation where others may forget about the things that drag them down. That is solid. That is impactful. **-OC**

Bayer CropScience



John "JT" Turner
Area Sales Manager IV
Bayer CropScience LP
Environmental Science / Golf and Lawn
40 W 665 Campton Woods Drive
Elburn, IL 60119
Tel: 630-443-7807
Mobile: 630-215-6110
Fax: 630-443-7839
john.turner@bayer.com
www.bayer.com



LAYNE-WESTERN

When in need of professional services for well drilling,
well rehabilitation, pump installation and repair,
please contact fellow M.A.G.C.S. members at:

Aurora, IL: **TOM HEALY** 630-897-6941 office
708-514-2233 cell
thealy@laynechristensen.com

Beecher, IL: **JOE EISHA** 708-946-2244 office
708-514-0631 cell
jeisha@laynechristensen.com



Nels J. Johnson Tree Experts, Inc.

A Proud Tradition Since 1930

Phone: 847-475-1877 • Fax: 847-475-0037
www.nelsjohnsontree.com





FEATURE I

Bruce Branham, *University of Illinois*

The Summer of 2012

One for the Record Books or a View of the Future?

One can not ascribe climate change as the proximate cause for individual weather events. Climate does vary, but how much of what we are observing in this summer heat wave can be attributed to climate change? That is a difficult question to answer and beyond my range as turf scientist. I do know that it is hot, dry, and extremely unusual weather that we're experiencing. Those of you who have around the block a few times remember the summers of 1995 and 1988 as exceptionally hot or dry, respectively. How do those summers compare with what we've experienced in 2012? How does 2012 compare to some of the all time hottest summers, like 1936 or 1934?

The State of Illinois climatologist, Jim Angel, is based at the Illinois Natural History Survey and has posted online the daily climate record for Champaign-Urbana going all the way back to 1888. I've used that data to put together some comparisons that will give you an idea of just how hot 2012 has been.

In Chicago, the 1995 heat wave was blamed for nearly 750 deaths. I don't have data for Chicago, but C-U is usually warmer than Chicago, so the C-U climate data is a good proxy. In this series of graphs, I've plotted high temperatures from June 1 through July 31 in 2012 compared to 1995 (Figure 1), 1988 (Figure 2), and 1936 (Figure 3.) Plotting all of these together is more efficient but you really can't see the differences.

While 1995 was hot, it can't hold a candle to the heat we've had in 2012. From June 1 till June 26th, the two years were similar, but in 1995, it cooled off in late June with a high temperature of 72° on July 1. In contrast, in 2012 the temperatures touched 100° F for two days in a row near the end of June. In early July, it got really hot with 4 consecutive days at 100° or higher. The end of July saw significantly higher temperatures in 2012 compared to 1995. Clearly, 2012 has been hotter in June and July than 1995.

(continued on next page)

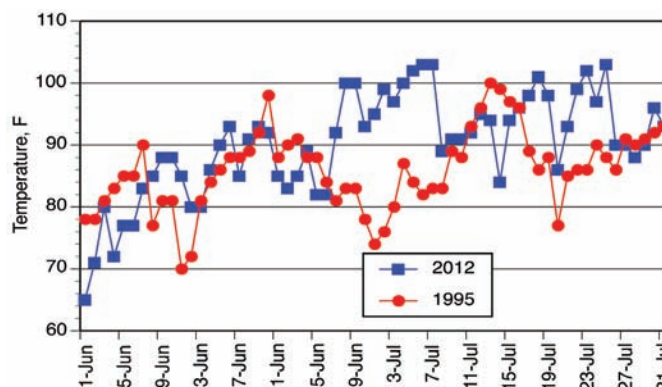


Figure 1. Daily high temperatures for June 1 through July 31 for 2012 and 1995.

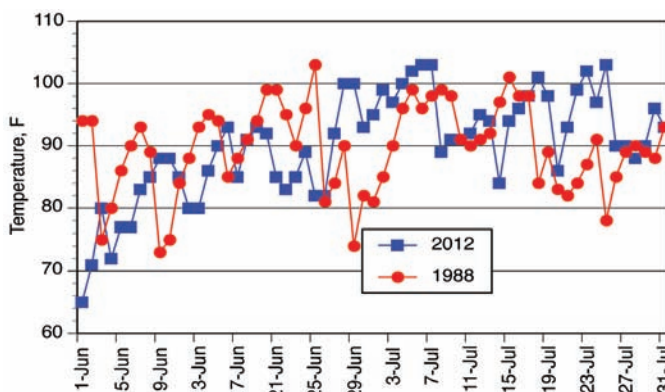


Figure 2. Daily high temperatures for June 1 through July 31 for 2012 and 1988.

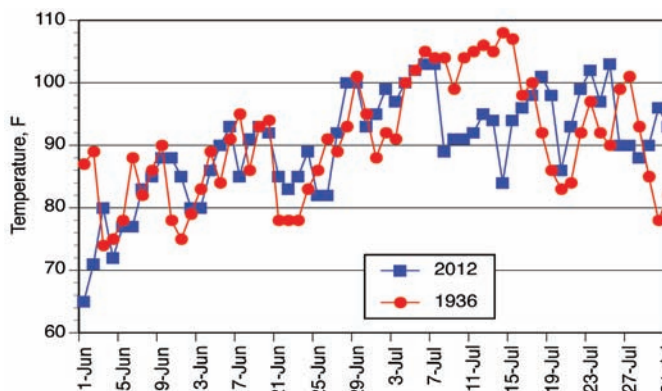


Figure 3. Daily high temperatures for June 1 through July 31 for 2012 and 1936.



Wheeling 847-537-2177
Mokena 708-444-2177

We'll help you keep your water features worry free.



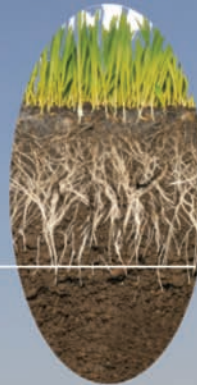
arthurclesen.com
Anderson, Garry....630-514-4114
Anderson, John.....630-669-0519
Bartosh, Scott.....262-221-5524
Lamkin, John.....708-259-4354
Spier, Scot.....847-561-3139



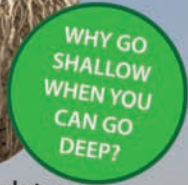
WHAT'S HOLDING BACK YOUR ROOTS?

Conventional Cultivation

Deep Tine Cultivation



Break up your cultivation pan



Utilize and expose your complete soil profile to adventitious roots by shattering the cultivation pan created by repeated shallow cultivation.

CS Turf offers the turfgrass industry a "Common Sense" approach to turfgrass health and management. You are measured by the factors and quality of your turf that is above ground. These components are defined by what is below ground, the plant roots. CS Turf offers a complete service of deep tine aerification operations for all your turf needs.

*Experienced Operators - (25+ years as golf course superintendents)
Flexible to Your Schedule and Turf
Affordable
Needle Tine at Night™ - we'll get it done and only the roots will know
Let's Talk Turf - call today for a quote*

Renny Jacobson
renny@csturf.net
(815) 791-7404
Frankfort, IL

What about 1988? That was a year of unrelenting drought and stifling heat. Interstate pavement buckled around Omaha, NE as temperatures soared above 100°. These two years look more similar than did 1995 and 2012. However, while mid- to late June was hotter in 1998 than in 2012 with a 102° reading on June 25 in 1988, by the end of the June, 2012 is clearly much hotter. There were two days with temperature readings above 100° in 1988 and nine in 2012. In 1988, there were 34 days at 90° or above for June and July. In 2012, there 36 days at 90° or above including 27 days in July. So, both summers were hot, but the average daily high temperature in 2012 was 90.2° while in 1988 the average daily high for June and July was 89.6° F, which would indicate that 2012 was slightly warmer than 1988. However, if I just remove the first 2 days in June from the average, then the 2012 average becomes 90.9° and the 1988 average becomes 89.4°, indicating 2012 had a daily high air temperature that was 1.5° F higher than in 1988.

My father grew up on a farm and often talked about how hot the summer of 1936 was. This was during the dust bowl, and while it wasn't dusty in central Illinois, it was hot and dry and no one had air conditioning. Here we see that 2012 meets its match. The temperatures were very similar throughout June and early July in both years. However, in 2012 we had 4 days of 100°+ temperatures in early July, almost exactly the same pattern seen in 1936. In fact, during high temperatures in early July, every record high came from 1936. In 2012, our temperatures cooled off to a relatively balmy 89° F on July 8th and stayed in the low 90°s over the six days. In 1936, by contrast, the temperature dropped all the way to 99° on July 8th and then stayed over 100° for the next six days reaching a high of 108° F on July 14th. In 1936, the average daily high temperature for June and July was 90.8° versus 90.2° in 2012, a difference of over a half of a degree per day. July of 1936 had 13 days of temperatures over 100° F versus 7 days in 2012. So, 2012 is not the hottest summer on record, but very close to the hottest in human records (which are no more than a nanosecond of the history of the earth).

What about drought during these years? In 2012, we had decent rain in early June, but since June 17th, we've had a total of 0.67" of rain. For the two months of June and July, the average precipitation in C-U is 9.04" and we've had a total of 2.89" in 2012. In 1995, 1988, and 1936; C-U received 3.92, 3.96, and 1.82" of rain, respectively. While the 1988 number looks respectable, the drought broke near the end of July, and we received 3.24" of rain between July 18 and July 25. In 1988, the drought started in late April

and lasted until mid-July. While 1995 was hot, the bigger problem for turf managers was the rain. In the first 9 days of August of 1995 (the data I'm showing is for June and July), we received 4.5" of rain. It is more difficult to manage turf through excess moisture than lack of moisture. Receiving all of that rain in early August when temperatures were still above 90 F created sauna-like conditions perfect for rapid disease development. It is the disease pressure that makes turf management such a challenge for today's superintendents. So while 2012 has been very challenging, disease pressure has been relatively light and thus turf problems have not been as catastrophic as we might expect had we had more rain. As a note caution to golf turf managers, if the rain does return yet this summer, be prepared. The humidity that will accompany significant rain when combined with the weakened state of most turf will put tremendous disease pressure on the turf. Periods of control can be much shorter than anticipated and turf loss can be rapid and severe.

Weather Extremes

One last graph I'll leave you with. We saw that the temperatures in 1936 were similar to 2012 and actually warmer. What about the winter of 1936, was it warm like we had in 2012? As can be seen in Figure 4, the winter of 1936 was pretty severe with a low temperature below -20° F and many days of below zero lows. The average daily low temperature in 2012 was 25.2° F while in 1936 the average daily low temperature was 13.4° F. I would consider 1936 a year of temperature extremes while 2012 is just plain hot.

I will not start a debate about climate change in this post, but let us hope that 2012 is a weather extreme and not the start of long-term change in our climate. **-OC**

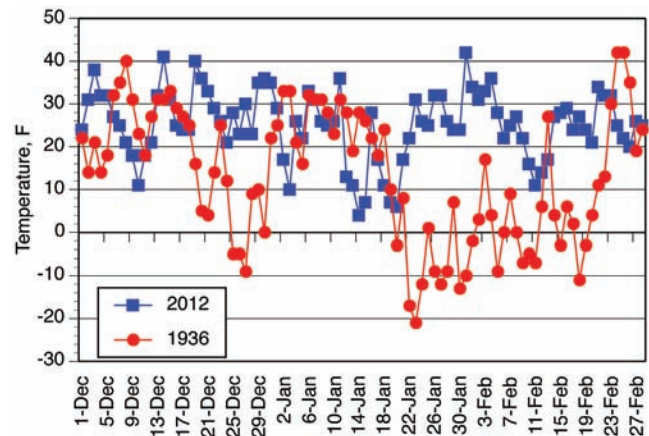


Figure 4. Daily low temperatures from Dec 1 through Feb 28 for 2012 and 1936.

*Specializing in Bedding Plants
Large Variety Fall Mums*

ANTON'S
Greenhouses & Garden Centers

<p>Rick & Bob Anton ANTON'S OF KENOSHA 9140 Cooper Rd. (51st Ave.) Kenosha, WI 53142 414/694-2666</p>	<p>Gary Anton ANTON'S OF EVANSTON 1126 Pitner Avenue Evanston, IL 60202 847/864-1134</p>
--	---

healthy grow
PROFESSIONAL

A Pearl Valley Organix Brand
healthygrowpro.com

Jeff Leuzinger (815) 291-9627 jleuzinger@healthygrowpro.com



It's All About **PLAYABILITY.**

Playability keeps your customers coming back. At Chicagoland Turf, we have the agronomic expertise, range of products, and keen industry knowledge to help you make your golf course one that customers play again and again. And we'll do it with solutions that work for both your golf course and your budget.

Now proudly offering products by The Andersons.

To make the most of your golf course, contact us today.

(630) 268-8871
turfventures.com



chicagolandturf

global resources / local service



“I'll make dollar spot pay.”



“Even the best turf can fall victim to disease. But with **Honor® Intrinsic™ brand fungicide**, I won't go down easily. On top of unsurpassed disease control, research shows that **Honor Intrinsic's plant health benefits** give me a better root system so I can stand up to stresses like drought and moisture events, extreme temperatures, and aeration—better than ever.”

Intrinsic brand fungicides don't just fight disease; they give turf the resilience to endure stress. Find out more by contacting Randy Lusher, 630.810.1832, randy.lusher@basf.com.

BASF

The Chemical Company

* Not registered in California.
Always read and follow label directions. © 2011 BASF Corporation. All Rights Reserved.

FEATURE II

Josh Therrien, *Black Sheep Golf Club*



Employee Training is the Key to Efficiency

Before my child was born this spring I had always been the one to work twelve-hour days without thinking twice about it. I was always getting involved in everything because I had the attitude that if I did not do it, it would not get done correctly. Now, I do not have time to work those long shifts each day as I once did. The funny thing is, everything still gets completed. The reason tasks get accomplished without me being involved every step of the way is due to the fact that I have learned both how to train and trust my colleagues. Even in this outrageous summer that we have had, I have worked fewer hours because my superior and I have trained key staff members on hand syringing and hand watering.

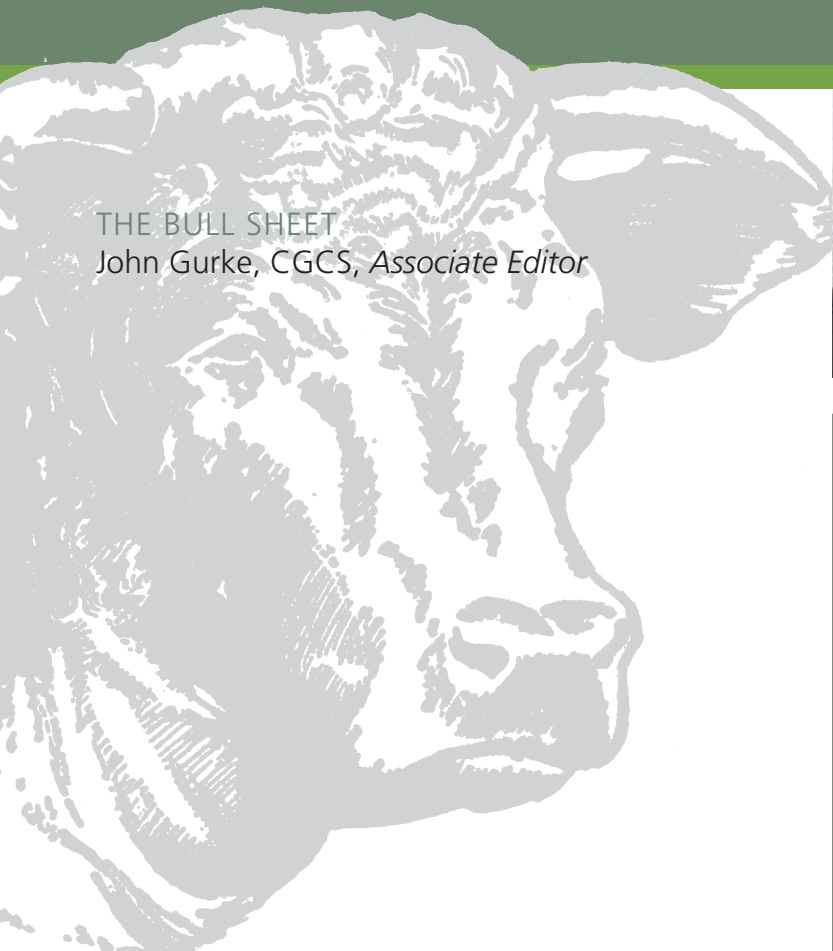
When training employees on new and more technical tasks the one thing I can tell you is patience is a virtue. It took years and a few tough summers for me to learn how to be precise at such things as hand watering, course set up, and irrigation diagnostics. No one can expect even a seasoned crewmember to be a specialist at a task that is new to them. When you are training someone, I have found that it is best to show and not just tell them what to do. Have them go out to the job site with you and demonstrate exactly what you want done. Be as detail oriented as possible and expound on how critical the job is. Also, when you go out to the job site make sure that you come prepared with all the tools required to accomplish the job. It just looks bad and unprofessional when you show a crew member how to cut cups and you bring the cup cutter but forget all the other necessities back at the shop. Additionally, demonstrating the proper way to do something the first time gives the employee confidence in you.

After you have shown someone a particular job, now it is his or her time to give it a try. Let them do it on their own with you watching and answering questions. Expect them to make mistakes. Don't get mad when this happens. Follow up is imperative. Just because they are trained on something as fixing a broken swing joint, does not mean that they are going to do it right all the time without slipping up. When they make a mistake let them know that it is all right and assist them in fixing it. Continue to watch and critique and always give them a vote of confidence. Just remember never to get worked up. Remember someone took the time to teach

you and the feeling you had of not knowing how to do something.

One of the more difficult aspects in training someone in a task that you once did on a regular basis is learning to let go. We all believe that we are the best in what we do. Sometimes we want to do it ourselves because we are the educated experts. Well, I have come to the realization that the educated experts have to learn to train, observe and fine-tune. I remember the first time I trained someone on how to syringe a *Poa annua* green. I thought to myself that this is going to go horribly wrong and I am going to get blamed for it when this green dies. After training the individual I was pleasantly surprised. Someone who I thought of as just an average worker, turned out to be my number one hand waterer. He became my go-to person even on the hottest of weekends. This process of teaching, training and letting go helped me grow as a leader and be more efficient as a manager. Now I spend more time fine-tuning other aspects of the golf course and am not so narrow-minded and controlling.

Golf course superintendents often get labeled as perfectionists. I see that as a good thing. If we teach everyone on staff to be a perfectionist in their tasks, that will be a great thing. After teaching and training is complete, just remember not to kick into auto-pilot and look at things each day. You are still accountable for someone else's work. When you give the right training and tools to the right person you too will find that you have more time to spend on other aspects of life, especially your family. **-OC**



THE BULL SHEET
John Gurke, CGCS, Associate Editor



AUGUST 2012

Great news! **Dan Murray** is the new golf course superintendent at Pheasant Run Resort in St. Charles, IL. Dan takes over for the retiring **Peter Mirkes**. BIG congratulations to both Dan and Peter on their new paths in life.



Dan Murray

Also congrats to **Jeff Plasschaert**, assistant superintendent at Bryn Mawr Country Club on carding a hole-in-one on a long par 3 at the Rock Island Arsenal golf course last month.

And more good news—**Brett Gutekunst**, superintendent at Sydney Morvitz, Robert Black, and the Diversey Driving Range (Chicago Park District facilities under the management of Billy Casper Golf) earned his Masters of Business Administration degree from Northern Illinois University. Brett, who has been with Billy Casper since 2008, graduated with a 3.6 GPA. Congratulations Brett!

DATES TO REMEMBER

August 20 – Annual CAGCS Founders Cup golf event at Lake Shore Country Club, **Jeff Frentz, CGCS** host.

September 17 – Annual Wee One Outing and Fundraiser at Pine Hills Country Club in Sheboygan, WI, Rod Johnson host.

September 24 – MAGCS Golf Championship at Big Foot Country Club in Fontana, WI, **Jim Knulty** host.

September 25-30 – The Ryder Cup Matches at Medinah Country Club in Medinah, IL, **Curtis Tyrrell, CGCS, Ross Laubscher, Jacob Mendoza, and Jim Wallace** hosts.

October 3-December 14 – Fall Session of the Professional Golf Turf Management School Two-Year Certificate Program at Rutgers University in New Brunswick, NJ.

October 22 – MAGCS Annual College Championship at Calumet Country Club, **Matt Harstad** host.

October 24-26 – PLANET 2012 Green Industry Conference in Louisville, KY. Information to follow.

October 25-26 – GIE + EXPO in Louisville, KY. Info can be found at www.gie-expo.com.

October 29-30 – Symposium on Affordable Golf at Southern Pines, NC. Go to www.symposiumonaffordablegolf.com for information.

November 14 – 60th Annual Midwest Turf Clinic, Medinah Country Club



Brett Gutekunst

(continued on next page)

Daconil Action™ Fungicide, A New Era in Turfgrass Management

The power of the active ingredient contained in Daconil® fungicide combined with a revolutionary Turf Protein Booster results in longer, more efficient, and broader spectrum turfgrass disease control.

- Boosts turfgrass natural defense proteins (PR proteins)
- Enhances overall plant health
- Increases tolerance to environmental stresses, like drought
- Suppresses activity of fungi, bacteria, viruses, and abiotic diseases

To learn more about Daconil Action, visit DaconilAction.com or contact:

Brian Winkel
630-391-2170



 **Daconil Action™**
Fungicide

syngenta.

Important Public Service Announcement: Drought makes golf courses dry. Dry golf courses need water and wetting agents. Water and wetting agents are sometimes best applied through a hose-end applicator. Hose-end applicators can become dangerous hand grenades if their structural integrity has been compromised. Don't let your hose-end applicator become a hand grenade—check it thoroughly before turning that quick coupler on.



When pressure reached this applicator, the jar broke just under the threads, hurtling it 63 yards from its operator, with an accompanying pop heard over 400 yards away. The nozzle

also blew off, sending it in another direction. Had the jar been directed toward the operator, it would have been really ugly. I know this—it was me, and it scared the poopie outta me.

.....
 The PLANET 2012 Green Industry Conference, which is hosted by the Professional Landcare Network (PLANET), is held in conjunction with the GIE+EXPO and Hardscape North America trade shows from October 24th through the 26th in Louisville, KY. Attendees will learn practical formulas for business success, as well as solutions for dealing with technology, sustainable practices, generation Y, and the changing landscape of the green industry. Information on this conference can be found at www.landcarenetwork.org/GreenIndustryConf.

.....
 The Turfgrass Information File (TGIF), produced at the Turfgrass Information Center of the Michigan State University Libraries, passed a significant milestone recently. As of June, 50% of all TGIF records link to full-text of the item. This is a huge deal, especially for researchers who spend countless hours searching for full-text documents in research libraries. Today, TGIF has around 204,000 total records (including this magazine), with over 102,000 being full-text accessible. Neat, huh?

.....
 The July 15th Sunday Tribune ran a story about this season's drought and its effects on local courses called "No Lie: Golf Courses Enduring Drought." In it, MAGCS members **Kevin Carlson** of the Naperville Park District, **Brad Helms** of Palatine Hills and **Bryan Stromme** from Billy Casper Golf were asked how their respective golf courses were handling

PAF
INC.
 Tree and Mulch, Inc.

Tree Removal • Trimming • Installation • Stump Grinding • Lightning Protection • Cabling
 Onsite Tub Grinding/Dyed Mulch Product (Turn Your Own Material into Premium Mulch)
(708) 913-3916

the drought, and what measures were being taken to keep them in top condition. Then the July 23rd Aurora Beacon News ran a similar story featuring quotes from **Jim Pedersen** of Hughes Creek Golf Club. The common theme amongst them all was that they'd rather deal with a lack of water than too much, as we've experienced the last two years. Well done guys.

Our condolences go out to **Fred Behnke, CGCS** and his family on the loss of his father on July 4th. Those who knew him know he loved his family and his country, and he was a true patriot whose passing on Independence Day was sadly appropriate.

Q: What do you call a member at **Brian Thomson's** club who never repairs his ballmarks?

A: A Biltmoren.

The National Alliance for Accessible Golf announced the update of its two signature resources, the Toolkit for Golfers and the Toolkit for Golf Course Owners/Operators. These toolkits further the mission of the Alliance to increase awareness of inclusion for individuals with disabilities into the game of golf. These resources provide guidance for golf courses, ranges and facilities and individuals interested in golf for people with disabilities. Both are available in PDF format at www.accessgolf.org/resources/index.cfm.

Congratulations to the Kirtland's. Justin and Elise were married the weekend after the Cougar Game back in Michigan. Justin is the golf course superintendent at Arrowhead Golf Course in Wheaton.



Big month for announcements, huh? The National Golf Foundation (NGF) announced it launched the 2012 American Golf Census Sweepstakes on July 4th. Now in its third year, the Census continues to count the country's estimated 26 million golfers and give away some pretty amazing golf prizes in the process. You can register with the Census by filling out a brief form at www.AmericanGolfCensus.org. For participating, every golfer is automatically entered into a sweepstakes to win one of more than 80 prizes. The Grand Prize is a trip to Orlando for the PGA Merchandise Show (yawn) and fulfilling

(continued on page 14)

STACK THE DECK IN YOUR FAVOR

With Solutions From
Quali-Pro



You win, turf diseases lose. Keep your course at its best with cost-effective, proven products from Quali-Pro. Because we have complete manufacturing capabilities and utilize the latest formulation technologies, Quali-Pro can deliver the products you want and need for less. Course Quality Rules and Quali-Pro puts you in control. Contact Doug Suttor for more information on Quali-Pro products. Ph: (616) 403-3983 • Email: dougs@quali-pro.com or see us online at www.quali-pro.com

QUALI-PRO
Quality Turf & Ornamental Products

 **Know the Sign.**

the winner's wish list with up to \$5,000 worth of goods and services on display at the Show. Other prizes include tickets to all four 2013 Majors, as well as equipment and gear from all the top golf companies.



The GCSAA Excellence in Government Relations Award recognizes and honors an individual, chapter, or coalition/alliance that demonstrates outstanding advocacy or compliance efforts in government relations. I'm guessing that's how it got its name. Nominees—and self-nominations are encouraged—will be judged on how their efforts best serve the interests of the golf course superintendent profession and the golf course management industry. The EGR Award may be given for the creation or successful use of tools, programs, or efforts to: Influence laws and regulations affecting golf courses, including but not limited to work with lawmakers, regulators, alliances, coalitions, and other entities; Encourage member compliance with laws and regulations, including but not limited to environmental laws, occupational safety and chemical applications. Nomination forms can be found at gcsaa.org by clicking on the Community tab, and then on Government Relations. Go get 'em, Dan.

In other GCSAA news, sixteen seminars have been added to the educational lineup for the 2013 GCSAA Education Conference to be held Feb. 4-8 in San Diego. To better reflect members' current educational needs and to keep offerings relevant to the profession, a number of seminars were deleted, rested, or restructured. For a list of the new seminars, go to gcsaa.org, click on the Education tab and then Conference Seminars. It's very exciting.

Next month should provide some compelling news from the United States Golf Association and its European counterpart, the R & A. At issue is the act of anchoring long putters to one's belly, which has gained more and more popularity (and notoriety) after major victories by Keegan Bradley and Webb Simpson spurred cries from traditionalists for banning the act. Regardless of the outcome of September's meeting, any rules change enacted would not go into effect until January 1, 2016, when the next rules changes are implemented. Could be a good thing for Adam Scott. Ouch.

Q: What do you call **Tom Wilson** if he just can't stop telling fibs?

A: A Deerpathological liar.

Once again this past month, MAGCS members were prominently featured in OPP's (other people's publications). **Curtis Tyrrell, CGCS** had a nice writeup on *TurfNet.com* about everything from how he came to land at Medinah Country Club; the renovations to Course #3, and the planned

Rooted in Science

FLORATINE

www.floratine.com

ASTRON Liquid Fertilizer <i>Drive Roots</i>	PERK UP ENERGY <i>Heat Stress Relief</i>	PROTESYN Liquid Stimulant <i>Essential Amino Acids</i>
Hold Water <i>Water Retention</i>	CALPHLEX <i>Soil Catalyst</i>	Push Water <i>Permeability</i>
RENAISSANCE Micronutrient Technology	KNIFE <i>Rapid Green</i>	

Distributed by:

GREAT LAKES TURF LLC

Jeff Mazur - 630.936.3179 Ed Fischer - 847.337.1091
Marty Heyen - 630.939.0151 Jim Johnson - 616.292.0260

SOD

Sod That Fits Your Course To A Tee

All varieties available as washed sod, traditionally cut sod or big roll sod.
Your Single Source for:

Bentgrass Varieties

- Penncross™ Bentgrass Sod
- Pennlinks™ Bentgrass Sod
- Penneagle™ Bentgrass Sod
- L-93™ Bentgrass Sod

Low Mow Varieties

- XL2000™ Bluegrass Blend
- Bluegrass Fescue Blend

Installation and turf stripping capabilities available.
We can custom grow to your specifications.
Please inquire.

H&E SOD NURSERY inc.

3900 West 167th Street, Markham, IL 60428
708-596-7200
1-800-244-7200

Member: **Midwest Sod Council**

WWW.HESOD.COM

THE LITTLE GIANT

RTV500

**Starts quicker.
Runs quieter.
Stops smoother.**

The new Kubota RTV500 compact utility vehicle has all the comfort, technology and refinements of a larger utility vehicle. Available in Kubota orange and Realtree® camouflage, the four wheel drive RTV500 is ready for work or play. Visit your local Kubota dealer to test drive the only utility vehicle of its kind.



Martin Implement, Inc.
18405 115th Avenue
Orland Park, IL 60467
(708) 349-8430

Kubota
www.kubota.com

*Realtree is a registered trademark of Jordan Outdoor Enterprises, Ltd.
© Kubota Tractor Corporation, 2008




Growers of Quality Sod

SERVICE!
LOCAL GROWING FOR
EASY PICKUP OR QUICK DELIVERY.
DELIVERY ON TIME, EVERYTIME.

QUALITY!
FEATURING
ELITE KENTUCKY BLUEGRASS,
BENTGRASS SOD, AND
TURF-TYPE FESCUE

- LOWER MAINTENANCE
- MORE DROUGHT & SHADE TOLERANT
- BETTER WEAR RESISTANCE

PRICE!
CALL FOR A QUOTE

NEW
PRODUCT



630-557-2900

MAIN STREET
11 MILES WEST
OF BATAVIA, IL

renovations to Courses #1 and 2; through the current preparations for next month's Ryder Cup matches. On *TurfNet's* Forum, **Chuck Barber** and **Tim Christians** posted on quite the variety of topics, from their favorite fertilizer to Quicksilver for moss control to the best sunglasses for the golf course. And of course, as usual **Dan Dinelli** was spotted in something or other. It was actually a great article in *Golf Course Industry* about dealing with poor water quality if memory serves.

I think it has finally been figured out. After years of research, and poring through old documents and photos, the question of PGA Tour golfer Ricky Fowler's parentage has been answered: Could **Eddie Braunsky** be Ricky's baby daddy? You decide...



Congratulations to Travis and Brooke Dykstra on the birth of their daughter Avery. Avery Grace was born on February 20 of this year.



For Sale: 19 (Nineteen) – NW8000 Satellite Controllers. \$750 each. Contact: Chad Papke, Rockford Country Club. (815) 988-5434

(continued on page 16)

The 12th Annual John Buck Golf Outing was held at Bartlett Hills Golf Course on the 10th of July with **Kevin DeRoo** serving as our host. This event is a must-do as all of its proceeds go to the John Buck Scholarship fund, which is divided up by the Kane County Farm Bureau Foundation, the Northwest Illinois Golf Course Superintendents Association, the Wisconsin Golf Course Superintendents Association, and MAGCS. The golf course was in perfect condition, and a great time was had by all who participated. Seemingly every hole had some kind of fun event on the side, including a big cup, three flags to choose from, the bags game, and the ring in the water chipping challenge (and all with pretty ladies running them). Following golf, a terrific dinner and awards ceremony were enjoyed by all. Many thanks to all the volunteers who ran the tee games, to Kevin and the entire staff at Bartlett Hills, to the folks at JW Turf, and to John Buck for being the man he was and the inspiration behind this great event.



THORNTON EQUIPMENT SERVICES, INC.

Office: 708.479.7531 Mobile: 708.774.8751
 Jim@WhenItsOutOfReach.com



*Stream & Pond Bank
 Restoration and Stabilization*



Low Impact Construction Methods



Bunker Renovation

**In House Participation Welcome*



SUPERCHARGED BENTGRASS

With Yellow Jacket® Enhanced Seed Coating



SUPERCHARGED BENTGRASS WITH YELLOW JACKET®

Bentgrass coated with Yellow Jacket® germinates and establishes better than uncoated seed. The secret is better utilization of available water. This is due in large part to ZEBA®, a key component of Yellow Jacket.

ZEBA is a super absorbent technology that can hold 600 times its own weight in water. Yellow Jacket acts like a sponge around the seed, holding water and nutrients for the seed to draw on as needed for germination.

The Yellow Jacket Advantage

- Improves handling of small seed
- Provides moisture during seed germination
- Improves establishment
- Reduces need for frequent watering during establishment
- Absorbs and releases nutrients to seedling

Why water my seeds? ZeBA® is a registered trademark of and owned by Zeon Tech. Member Technology, Inc. ZEBA®

BARENBRUG
Great in Grass®
www.barusa.com

PROGRO
solutions
815.747.6024
progro-solutions.com

Rusty Stachlewitz..... (630)779-0761
Craig Shepherd (563)213-1632
Brett Ziegler (847)302-9673
Aaron Goy (859)991-0828

GET FASTER RANGE RECOVERY



USE WS&S DIVOT MIXES

Waupaca Sand & Solutions
715-258-8566

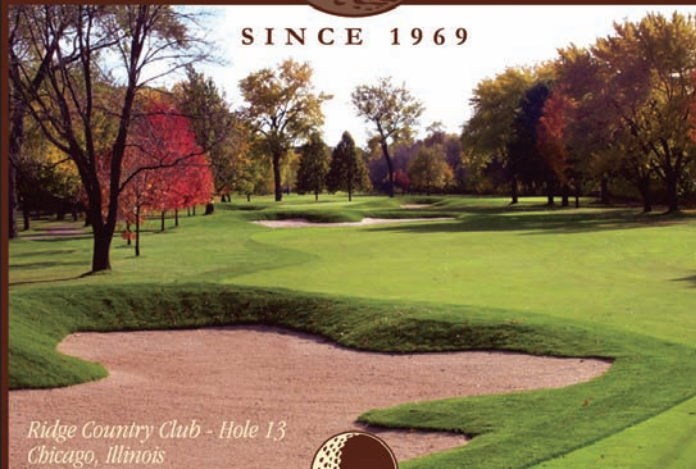
www.WaupacaSand.com

YOUR Trusted Sand Source



HOLLEMBEAK CONSTRUCTION INC.

SINCE 1969



Ridge Country Club - Hole 13
Chicago, Illinois

Golf Course Construction • Renovations • Bunkers
Clearing • Feature Grading • Shaping • Drainage
Tee and Green Construction • Cart Paths • Grassing
Shoreline Stabilization • Pond Construction and Dredging
Laser Tee Leveling • GPS Golf Course Mapping

P.O. BOX 103 • BIG ROCK, IL 60511 • 630-556-3891



SUPER -N- SITE

Josh Therrien, *Black Sheep Golf Club*



Tyler Carter -N- Kane County Cougars

On July 14th MAGCS held its Family Picnic Night at Fifth Third Bank Field to watch the Kane County Cougars. As golf course superintendents we often times find ourselves paying more attention to the turf on the field than the game itself when in a ball park. The man behind the scenes for the Kane County Cougars is Head Groundskeeper Tyler Carter. Tyler is in his rookie season as Head Groundskeeper for the Cougars. Prior to his arrival in the Chicago area, Tyler served as a grounds crew member for the Minnesota Twins at Target Field. Tyler also fulfilled a student internship at Target Field while attending Michigan State University's Sports Turf Management Program.

As head groundskeeper, Tyler has been successful in field preparation for not only minor league baseball games but also other events that the park hosts. On July 8th the ball-park held its first concert. The band Wilco took stage during a major heat wave to their largest audience they every had. Fortunately, Tyler and his Assistant, Sean Ehlert, were able to prepare the field for all events while constantly keeping a watchful eye on the weather.

Prior to graduating from MSU Tyler received a Bachelor's Degree in Archeology from the University of Michigan. While at U of M, Tyler took a student job working on the football field. It was not too long after that when Tyler caught the "turf bug" and turned a college job into a career. Some of Tyler's mentors who have helped him hone his craft have been Dr. John "Trey" Rogers of Michigan State University and Larry DiVito, Head Groundskeeper of Target Field.

One aspect that Tyler enjoys is watching the stands full of fans at game time. Certainly MAGCS is a group of fans who can realize and appreciate the hard work that Tyler has put in so far. **-OC**

On July 14, 2012 the MAGCS held their Family Night Picnic at the Cougar baseball game in Geneva, Illinois. It was a mild evening weather wise and most of the talk centered on a few passing rainstorms that hit the evening and morning prior to the game. Nevertheless, those in attendance enjoyed a Cougar win, good food and company and fireworks as usual. The highlight of the night was our own Jan Jarvis as he sang "God Bless America" to kick off the seventh inning stretch. Thanks to our sponsors for making this night affordable for all: Arthur Clesen, Inc., BASF, Burris Equipment Company, Nels J Johnson Tree Experts, Pro Gro Solutions, Reinders, Inc. and Syngenta Professional Products.

(photos on pages 21 and 23)







Breaking barriers to better turf.

BILL SMITH
Account Manager -
Central and
Northern Illinois
Cell: 217-971-6695

REDEXIM TURF PRODUCTS:
A Division of Redexim North America
29 CASSENS COURT
FENTON, MO 63026
TEL: 636-326-1009
FAX: 636-326-4884
EMAIL: Bill@RedeximTurfProducts.com
WEBSITE: www.RedeximTurfProducts.com

PENDELTON TURF SUPPLY



Mike Werth

805 Ela Ave. • Waterford, WI 53185
Phone: 262-534-3334 • Cell: 414-640-2392 • Fax: 262-534-2990
E-mail: pendeltonturf@tds.net

Midwest's Largest Golf Car Distributor



HARRIS GOLF CARS

SALES & SERVICE

—HOURS—

Mon.-Fri. 8-5 • Sat. 9-1

CHECK US OUT...

www.harrisgolfcars.com

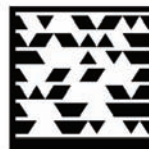
ILLINOIS LOCATION:
549 Heartland Drive, Suite A
Sugar Grove, IL 60554
(630) 466-5239

IOWA LOCATION:
9875 Kapp Court
Peosta, IA 52068
(563) 582-7390

WISCONSIN LOCATION:
13900 Leetsbir Road
Sturtevant, WI 53177
(262) 886-2816



Results. Expect it.



Scan to your contacts.
Download free app
at gettag.mobi

CHIP HOUMES

District Sales Manager
(217) 260-6943 Mobile
choumes@precisionlab.com

www.precisionlab.com

Spectrum Technologies, Inc.

"To Measure Is To Know"

Weather Stations
Data Loggers
Frost Alert Systems
Pest Management Tools
Irrigation Management Tools
Soil Moisture and Compaction Meters
pH, EC, and Nitrogen Meters
Light and Chlorophyll Meters



12360 S. Industrial Drive East
Plainfield, IL 60585

toll free: 800.248.8873
phone: 815.436.4440
fax: 815.436.4460

gzumdahl@specmeters.com
www.specmeters.com

Greg Zumdahl
Sales Consultant

RIVERWALLS LTD.

P.O. Box 562, Barrington, Illinois 60011

GOLF COURSE ENHANCEMENT

Shoreline Stabilization, Creek Crossings
Stream and Spillway Re-Construction
Arched Stone Bridges

DARRYL SCOTT BURKETT
C.E.O.

1-888-254-4155
OFFICE: 847-382-9696
MOBILE: 847-366-5400
E-mail: riverwalls@hotmail.com

Since 1968 Division of STL Corp. BUY EXPERIENCE



Elburn, IL 60119

Lake Villa, IL 60046

www.wsssg.com

Please contact us 24/7 for all of
your water well pump service, well
rehabilitation and irrigation pump
repair needs.

M.A.G.C.S Core Sponsor

Todd Kerry
Office: (888)769-9009
Cell: (630)201-0749
E-mail: todd@wsssg.com

Tim Kelly
Office: (888)769-9009
Cell: (262) 269-6289
E-mail: tkelly@wsssg.com



**HALLORAN &
YAUCH, INC.**

IRRIGATION
SYSTEMS

28322 Ballard Road
Lake Forest, IL 60045

Telephone: 847-281-9400
Fax: 847-281-9780





**Independent Soil, Tissue
and Water Analysis**

USGA Physical Analysis

- ◆ Organic matter
- ◆ Percolation rate
- ◆ Pore space study
- ◆ Construction Analysis

Local ~ Experienced
Here when you need us!



David Marquardt - Consulting Agronomist
630-251-1511 Dave@dirty-n-turf.com
www.dirt-n-turf.com

*"Golf Course Work
a Specialty"*
LEMONT PAVING CO.

EST. 1957

MURPHY'S

Tracy Murphy

11550 Archer Ave., Lemont, IL 60439
(630) 257-6701 • FAX 630-257-5194



DARRELL KOELPER
PRESIDENT

GOLF COURSE
CONSTRUCTION & REMODELING

MARENGO, IL

**KOELPER
GOLF COURSE
CONSTRUCTION
COMPANY**

OFFICE: 815-568-8382
FAX: 815-568-1048
HOME: 815-568-6603

COMMERCIAL TURF & TRACTOR
CONTRACTING, SALES, SERVICE, PARTS
Trust Your Turf to Us!

- Terra Spike® Deep-tine Aeration • Overseeding & Slit Seeding • Core Collecting •
- Greens, Tees, Fairways, Sports Fields • Complete Turf Renovation •

1-800-748-7497 • Bryan Wood, owner
Serving the Industry for over 25 years
Check out our demo and trade-in equipment for sale
www.commercialturfandtractor.com

On Course and the MAGCS thank our August advertisers.

- | | |
|-------------------------------------|--|
| Antons Greenhouses | Nadler Golf Car Sales |
| Arthur Clesen, Inc. | Nels J Johnson Tree Experts |
| BASF | PAF Tree Service |
| Bayer Environmental Science | Pearl Valley Organix |
| Burriss Equipment Company | Pendelton Turf Supply |
| Chicagoland Turf | Precision Laboratoeis, Inc. |
| Dirt-n-Turf | ProGro Solutions |
| Dunteman Turf Farms | Quali Pro |
| GroHort Enterprises | Redexim Turf Products |
| H and E Sod Farms | Reinders Inc |
| Halloran and Yauch | Riverwalls |
| Harris Golf Car Sales | Spectrum Technologies |
| Hollembek Construction | Syngenta |
| Koepler Golf Course
Construction | Thornton Turf Equipment |
| Layne Western | Water Well Solutions
Illinos Division |
| Lemont Paving | Waupaca Sand & Solutions |
| Martin Implement Sales | |

Advertise with On Course.

Our
members
notice!

Call 630-243-7900



MAGCS IN MOTION

Charles Anfield, CGCS, *Heritage Bluffs Golf Course*



MAGCS 2012 Scholars

There were 20 applicants for the Midwest's scholarships this year. Eight of the applicants are in college and 12 are headed off for their first year this August. We send each of them well wishes for the coming year and thank them for applying.

Congratulations to the Midwest's 2012 Scholars.



Bobby Dunteman son of MAGCS member Bob Dunteman will be attending Iowa State University and studying Agricultural Engineering this fall. Bobby graduated this past May from St. Charles North High School where he played varsity tennis and was a member of the Math National Honor Society and the Business Professionals of America.



Sarah Ludwig daughter of Michael Ludwig will be attending Valparaiso University and play Division 1 soccer this fall. Sarah has played soccer since she was eight years old culminating her high school career as an All Sectional Player for Downer's Grove South High School. Sarah is also a member of the National Honors Society and has volunteered at Sharing Connections Furniture Bank over the past several years to help those in need.



Emily Schaefer, daughter of Paul Schaefer is a junior at the University

of Illinois studying Elementary Education with an endorsement in Spanish. Her main goal is to become a dual-language elementary school teacher. Emily is a dancer on the Illinettes Dance Team at the U of I and a member of the Student Education Association. She volunteers throughout the year at elementary schools in Champaign and Crystal Lake. **-OC**



Delivers
brains
and
brawn.

CAN A UTILITY VEHICLE
REALLY DO THAT?

Vehicles that go where you need them to go, doing the jobs you need them to do, day in, day out, without problems. Brains and brawn. Now available in utility vehicles.

Nadler Golf Car Sales, Inc.
2700 N. Farnsworth Ave.
Aurora, IL 60502
Call: 630-898-1616 for Eric, Chad or Dave
www.nadlergolf.com

YES, IF IT'S A



1 800.CLUBCAR • clubcar.com

Coming to An Ash Tree Near You...



Throughout the Chicago area, EAB is creating heartbreaking scenes like this.



GRO has the expertise, as well as the specimen replacement trees, to help restore the damage. Contact the "Big Tree Professionals."

Life is too short to plant small trees



HORTICULTURAL ENTERPRISES, INC.

14440 Marengo Road • Union, IL 60180

www.grohort.net

847-669-8658