

High performance is in our DNA.
Well, technically it's in our molecules.

New Renown™ fungicide is the only product to contain the active ingredients in both Daconil® and Heritage® fungicides—the top two-selling fungicides in the golf market. Azoxystrobin and chlorothalonil have been optimally formulated to protect turf from root to leaf tip. It's one economical, disease-fighting machine.

To learn how Renown can help you this season, contact Brian Winkel at 630-391-2170 or brian.winkel@syngenta.com.



syngenta.

www.RenownFungicide.com

©2011 Syngenta Crop Protection, LLC., 410 Swing Road, Greensboro, NC 27409. Important: Always read and follow label instructions before buying or using these products. The label contains important conditions of sale, including limitations of remedy and warranty. Renown™ is not currently registered for use in all states. Please check with your state or local extension service prior to buying or using this product. Daconil®, Heritage®, Renown™, and the Syngenta logo are trademarks of a Syngenta Group Company. Statistics cited from the 2009 study by SPC LLC.

100

2012 Board of Directors

PRESIDENT

Bob Kohlstedt, Fox Bend G.C.

VICE PRESIDENT

Michael Mumper, Arrowhead Golf Club

SECRETARY / TREASURER

Dave Groelle, CGCS, Royal Melbourne C.C.

EXECUTIVE DIRECTOR

Luke Cella

BOARD

Chuck Barber, Indian Lakes Resort

Matt Harstad, Calumet C.C.

Matt Kregel, The Club at Strawberry Creek

Dave Kohley, Silver Lake Country Club

John Nelson, Merit Club

PRESIDENT EMERITUS

Dan Sterr, Stonebridge C.C.

COMMERCIAL REPRESENTATIVE

Nick Baker, Chicagoland Turf

CLASS 'C' REPRESENTATIVE

Nick Marfise, Cog Hill G.C.

TURFGRASS ADVISOR

Dr. Derek Settle

EDITORIAL CHAIRMAN

Chuck Barber

ASSOCIATE EDITORS

John Gurke, CGCS

Chuck Anfield, CGCS

GRAPHIC ARTIST

Mark Karczewski

This publication is not copyrighted. We would like to share our articles with any who would like to use them, but please give the author and *On Course* credit.

Table Of Contents

www.magcs.org

DECEMBER 2011 Volume 65 No. 8



The Midwest Conducts its 59th Annual Midwest Turf Clinic with over 120 members in attendance at Medinah Country Club a few weeks later than normal this year.

FRONT COVER

On Christmas Eve MAGCS will celebrate its 85th year of existence with a few shots from the past.
Photo credit: Luke Cella

ON COURSE WITH THE PRESIDENT

3 Time Flies When You're Having Fun

Bob Kohlstedt

FEATURE

5 Established 1926

Luke Cella

DEPARTMENTS

12 the Bull Sheet
John Gurke

21 Education Review
Charles Anfield



The Midwest Association of Golf Course Superintendents (MAGCS), founded December 24, 1926, is a professional organization whose goals include preservation and dissemination of scientific and practical knowledge pertaining to golf turf maintenance. We endeavor to increase efficiency and economic performance while improving and enhancing the individual and collective prestige of the members.

The MAGCS member is also an environmental steward. We strive to uphold and enhance our surroundings by promoting flora and fauna in every facet in a manner that is beneficial to the general public now and in the future.

All editorial and advertisement inquiries should be directed to Luke Cella, Publisher, *On Course*, 11855 Archer Avenue, Lemont, IL, 60439. (630) 243-7900 or visit www.magcs.org for rates and requirements. Statements of fact and opinion are the responsibility of the authors alone and do not imply an opinion on the part of the officers or members.

ON THE GREEN, "ALMOST" DOESN'T CUT IT.

Jacobsen® Eclipse® 322: the industry's only
100% hydraulic-free riding greens mower.

When we say no hydraulics, we mean it. The Jacobsen Eclipse 322 provides greener operations and less maintenance to lower operating costs by up to 86%. Combined with programmable settings and individual reel control, you're assured perfectly manicured greens every single time. **Determine your course savings using our cost calculator at www.Eclipse322.com.**



www.Eclipse322.com

Burris
EQUIPMENT

www.burrisequipment.com



PGA

The Official Turf Equipment Supplier to The PGA of America and
The Exclusive Turf Equipment Supplier to PGA Golf Properties.
© May 2010, Jacobsen, A Textron Company.

JACOBSEN
A Textron Company

Lakemoor

27939 W. Concrete Drive
Ingleside, IL 60041
(815) 363-4100

Waukegan

2216 N. Greenbay Road
Waukegan, IL 60087
(847) 336-1205

Frankfort

10351 W. Laraway Road
Frankfort, IL 60423
(815) 464-6650

ON COURSE WITH THE PRESIDENT
Bob Kohlstedt, Fox Bend Golf Course



Time Flies When You're Having Fun

I am very grateful to the board of directors and the membership for allowing me to serve as the president of the Midwest Association of Golf Course Superintendents. It seems like yesterday when I was asked to serve on the board. At the time, my decision to run took some thought and I had my concerns: Will I do a good job? Do I have enough time to dedicate to serve? What are the responsibilities? Will I get elected? Am I ready to go the full term?

I figured I would try and do my duty to serve the membership of an association I had been a part of for almost two decades. In the back of my mind I thought "Heck, I might lose in the election and all my worries will go away." Little did I know I was running unopposed!

My time on the board has been hastened due to changes within the typical board order and in four short years I get to serve as president. Time flies when you're having fun.

My duties as a board member have been event arrangements, editorial chairman and partnership task group chairman. I did not have an opportunity to chair golf or education. Each of these tasks is assigned to board members and they are responsible for putting together a committee and completing each element. All the committee assignments come together and rely on each other to orchestrate the season of events and operation of the association. The time commitment varies with each task and the board works in teams to get it done. None of the tasks I chaired were overly time consuming. During my time on the board we have gone to a chair/ co-chair structure which helps to "break-in" new board members into new tasks. I found this to be very helpful and made for smoother transitions. I would encourage any member to consider board service. The rewards outweigh any challenges that one might think of to not get involved.

I am always amazed when I have to sit down and reflect on where I currently stand in life. My story is typical in that I started working at a golf course as a summer job and ended up choosing it as a career. The part I have difficulty with is where did all the time go? I started working at Silver Lake Country Club in 1983 washing dishes for banquets and in 1990 I was on the grounds crew trying to become the next Dudley Smith. The next year I started as an assistant super-

intendent to Jack McCormick at Calumet Country Club. During my seven year stay there I married my wife Robyn and had my first child Kelli. In 1997 I left CCC and took my first superintendent position at Wedgewood Golf Course to fill some big shoes left by Kenny Shepherd. Currently I am employed by Oswegoland Park District as the superintendent at Fox Bend Golf Course. I started in 2000 which is the birth year of my son RJ. I also have another daughter Kyra who is 9 years old. RJ will be 12 years old in July and I use that as a benchmark for my tenure. Again I wonder where all the time has gone.

I don't regret any of the career choices I have made. I have met some great friends and experienced some unforgettable moments. The people I have worked with and for have left a permanent impression in whom I have become. The rewards are endless and the great fortune of working with nature brings constant challenges. The trick is to forget the rough times and keep the good times in your memory banks. Time flies when you're having fun, maybe that is why it all goes too fast.

As I begin my term as president I would like to thank the current board members for their hard work and dedication. I want to welcome Matt Harstad and Matt Kregel to the Midwest board of directors and thank them for their willingness to serve. Thank you to all the past presidents that have set a standard I hope to achieve. It is an honor to be involved in an association that is nationally recognized as a leading chapter. All of which rests on the shoulders of our executive director who makes all things possible. Thanks Luke.

I want to wish the membership and their families a happy and healthy Christmas and New Year. Enjoy your "down time," surround yourself with friends and family, create memories and let the good times roll. -OC



**Want a mower that performs as well
in the shop as on the green?**

With our new SL PrecisionCut™ Walk Greens Mowers, you can set height-of-cut with a cordless drill, switch rollers by simply removing two bolts, and add an easy-to-adjust front push brush, Greens Tender Conditioner or rotary brush.

Plus, get the flawless finish on your greens that our walkers are known for. Interested? Contact us to learn more or visit JohnDeere.com/Golf.

Think Ahead.



46524

J. W. TURF, INC.
14 N 937 US HWY 20
HAMPSHIRE, IL 60140
(847) 683-4653

Nels J. Johnson Tree Experts, Inc.
A Proud Tradition Since 1930

Celebrating 80 years of complete, dependable and economical tree service for residential properties, municipalities, schools, industrial areas, parks and golf courses.

847-475-1877
fax: 847-475-0037
www.nelsjohnsontree.com

FEATURE
Luke Cella, *Publisher*

Established 1926

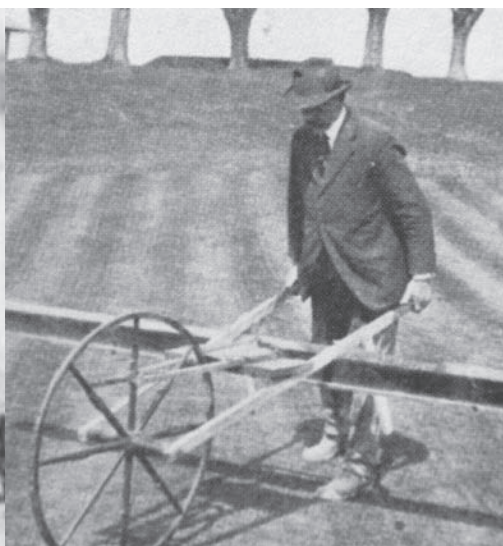
Having been over for more than seven years in 1926, the war was a thing of the past. There was plenty of time for America to convert from a wartime to a peacetime economy. The country prospered as radical changes occurred; more Americans lived in cities than in rural farm communities. It was the time of the \$5 workday, a good wage for those days as the workweek shortened in hours, creating more leisure time. People had money to spend as America became the richest nation on Earth and our culture of consumerism was born. Henry Ford sold over 15 million Model T's, roads were being paved and Americans headed out to explore the United States. It only took 13 days to drive from New York to California. The economic boom that propelled the nation impacted the game of golf as the number of courses grew from the mid 200s in the late teens to nearly 1,100 courses by 1930.

The art of greenkeeping was just that, an art. It wasn't based on science until the USGA and the USDA developed a formal science and the results were made available to those in the profession. Furthermore, as the demand for course conditioning grew, the profession of greenkeeping took hold as the work shifted from the golf professional and or green chairman to the greenkeeper. Several colleges and universities soon began to conduct turfgrass research and offer formal courses for the profession. Regional associations, clubs and a national association of greenkeepers were formed by men with the foresight, drive and perseverance to give each greenkeeper the knowledge and tools to manage the golf course

they oversaw the best that it could be. These pioneers took the principles of the game and applied them to the profession to make golf better for all.

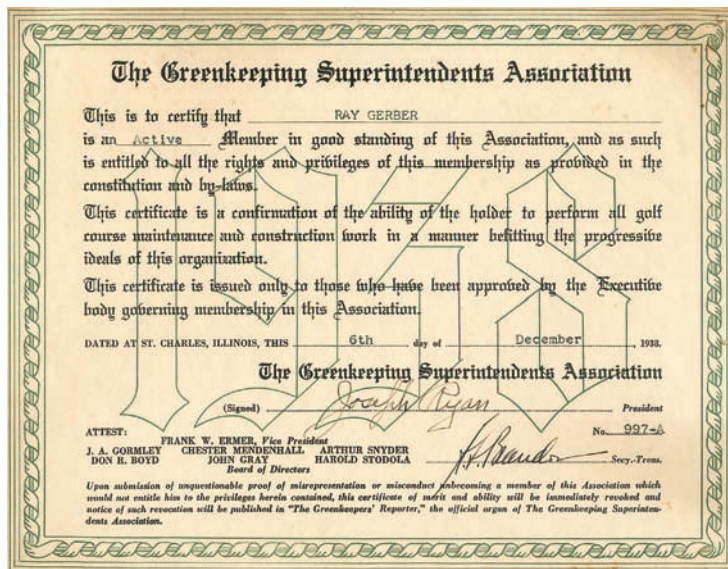
A day in the life of a greenkeeper was a little different than it is today, but I'm careful with this statement, as I think you'll see why. After all, the basic components of the golf course are still the same. People play the game, and they are still unchanged. They follow the same basic rules of the game, using clubs and balls on the same components that make up the field of play. Things and objects might be called

(continued on page 6)



something else or use another name (i.e. superintendent) but the basic tenets have not altered. We are more efficient, can do more with less, practices and techniques have advanced but the outcome is still the same – greens were mowed each day as they are today. “We pole the greens every morning the very first thing. We never mow a green under any circumstances until it has been poled. The mowing is done with hand mowers, always catching the clippings. Once a week during the growing season we recut the bent greens with a power mower using a steel brush in front to stand the runners up. Sometimes we find it necessary to recut some of the greens at different angles,” Fred Kruger, 1928.

Greenkeepers tried to educate their committees and warn them against the pitfalls of comparing golf courses to each other. “When comparisons are made of golf courses they should be made by a committee of experts who take into consideration the money that was expended in the construction, the drainage, the general locality, the expen-




diture for equipment, etc., and also whether it is per U.S.G.A. standard or whether it is to suit its own committee and members.” H.C. Moore, 1927.

If you are trying to switch your turf to a new cultivar, you do your homework and use turf plots and trials to make the selections. “In spite of the articles appearing in all golf periodicals extolling the merits of creeping bent this class of grass was the least appealed to the members, and in order to show them that bent

was the grass for our course we had to plant a nursery and showed the Green committee what bent would do.” Alex McCallum 1927. No matter what new thing you are going to try, it always makes sense to have a test plot “Before inaugurating a new practice on a general scale it is always advisable first to try it out on a small scale. Every golf course should have its experimental garden.” The Bulletin of the United States Golf Association Green Section, 1928.


We manage our turf stands to our weakest link, for most, it is *Poa annua*. Even if we have that under control, the seed

“I’ll make dollar spot pay.”



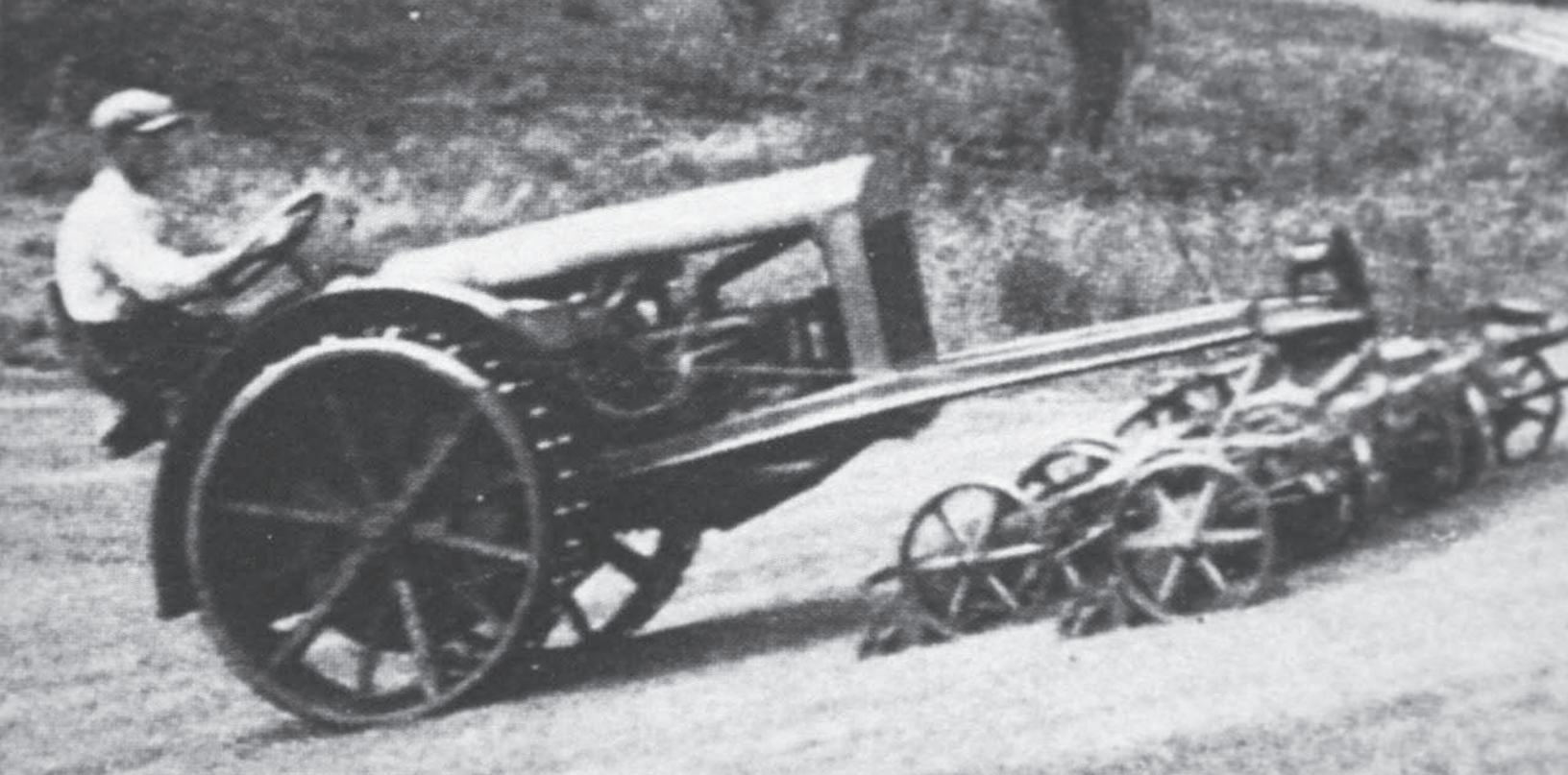
“Even the best turf can fall victim to disease. But with **Honor® Intrinsic™** brand fungicide, I won’t go down easily. On top of unsurpassed disease control, research shows that **Honor Intrinsic’s** plant health benefits give me a better root system so I can stand up to stresses like drought and moisture events, extreme temperatures, and aeration—better than ever.”

Intrinsic brand fungicides don’t just fight disease; they give turf the resilience to endure stress. Find out more by contacting Randy Lusher, 630.810.1832, randy.lusher@basf.com.



The Chemical Company

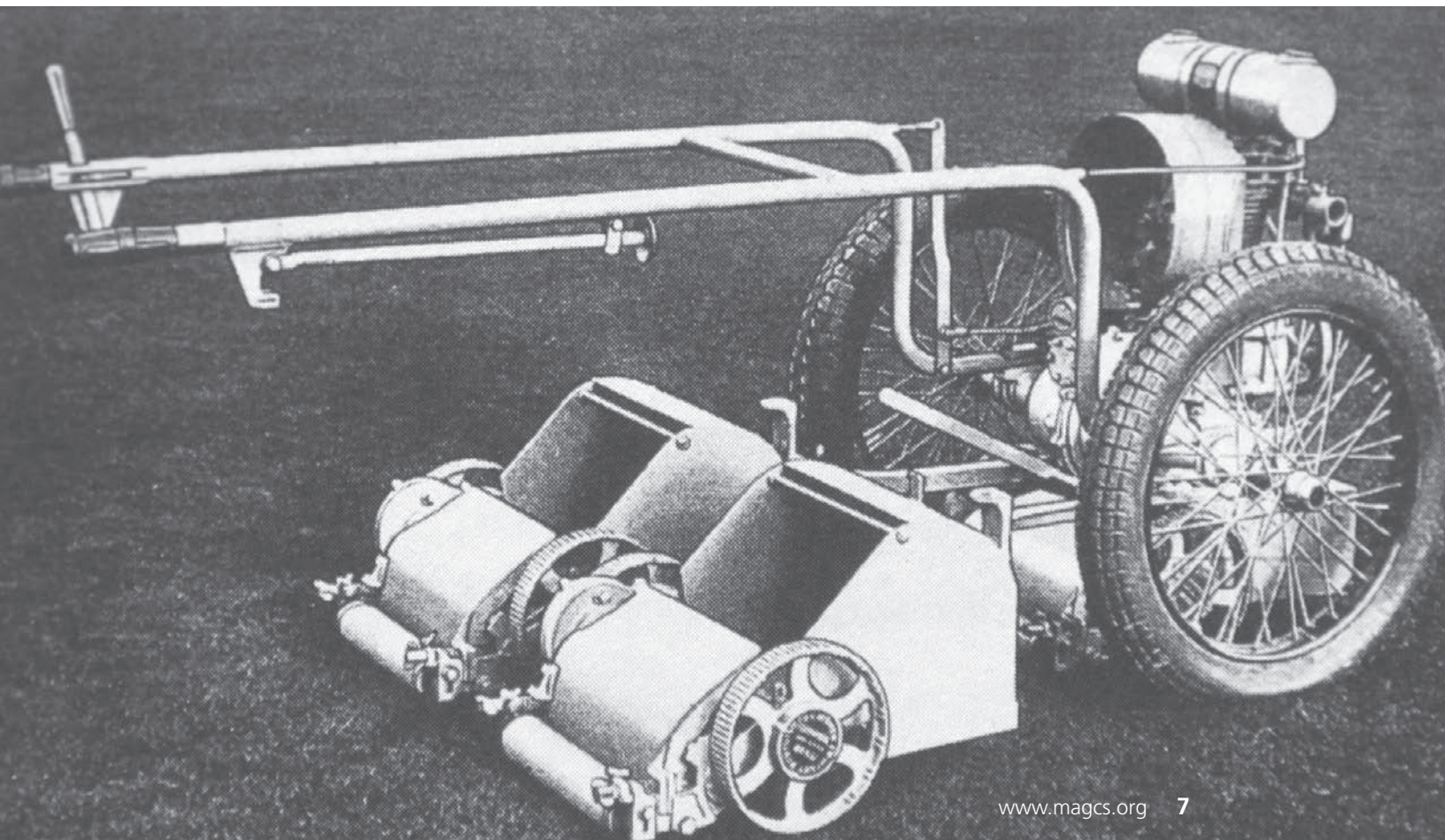
* Not registered in California.
Always read and follow label directions. © 2011 BASF Corporation. All Rights Reserved.



heads are a concern. "If only scattered plants occur in the turf, it is sometimes objectionable, as it may make the putting surface uneven. No matter how closely the grass is cut it will still blossom and make seeds at the very surface of the ground." C.V. Piper and R.A. Oakley, 1924. Furthermore, we know that grain is not an issue with how low we can go with our mowers, and thought it was only something greenkeepers

fought in the early days. "The better strains of creeping bent never form a "grain" because of the fact that under turf conditions their blades are so crowded together as to stand upright." Piper, 1927.

To finely manicure a golf course means attention is paid to the detail work. The devil is in the trifles. "Train your men
(continued on page 8)



to look out for the mere trifles. Greens and fairways alone have no beauty – it is what goes with them, trees shrubs, hills etc., that give them their artistic effect, but so many times these are mere trifles in the way of dead branches, broken limbs, fallen twigs that are left untouched, side shoots from young trees that ought to have been removed, give a neglected and untidy appearance. " Fred Sherwood, 1927.

How many conversations have you had with fellow superintendents and commercial representatives about the benefits of specific products? "At this season of the year there is always much discussion as to what chemicals are best for controlling brown-patch." John Monteith, Jr., 1927.

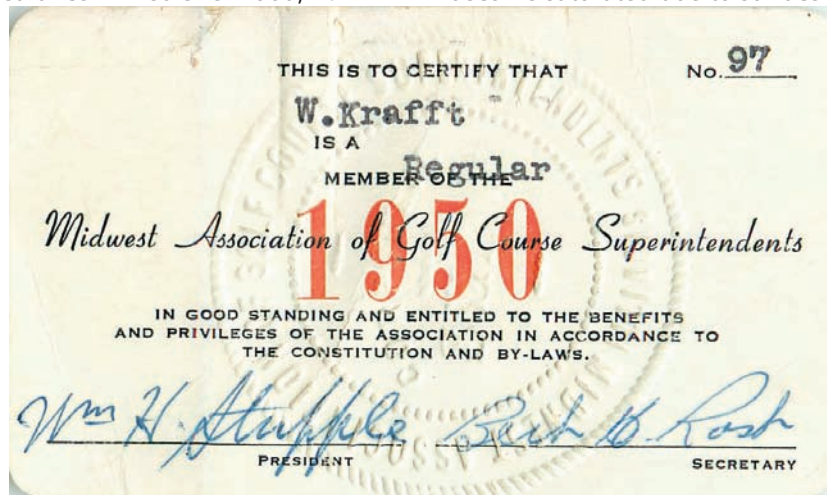
Golfers have high expectations for the conditioning of the course no matter the time of year or as we continually talk about, the weather. "Golfers are prone to be unreasonable and demand perfect putting turf irrespective of weather conditions...Members pay to play golf and expect well groomed turf at all times." O.J. Noer, 1929.

The best irrigation system in the world can't compete with a man and a hose when it comes to taking care of hot spots on a course. "Extreme care in watering seems important to avoid excesses, and during the hot months may mean hand watering greens blessed with low lying pockets or surface runways. When sprinklers are used these areas frequently become saturated due to surface movement from the surrounding higher areas."

O.J. Noer, 1929.

Water quality and quantity defines the quality of turf. "No greenkeeper, however competent, can keep a course in excellent condition now required, without adequate water facilities." Welton, Kenneth. 1928.

How many times have you heard that it is just common sense for the golf course superintendent to be on staff when a course is being built? "If the greenkeeper is engaged in the early stages of the construction and can see the course developed from the start, he will be better able to determine the methods of conditioning the course for play." Dearie, Edward B. Jr. 1928.





Tour-Redi
USGA- Spec Sand Based
Bent Grass

*Lay it and
Play it!*

**CENTRAL SOD
Tour-Redi Turf**


- USGA Spec Sand Based
- Available in "Greens" Height
- Multiple Varieties
- Custom Grown to Your Specifications
- Delivered and Installed Throughout the Midwest
- Poa Free!
- Sand Based Low-Mow Bluegrass at Tee height



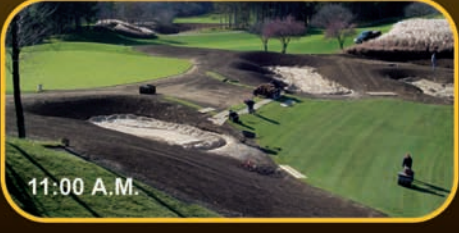
Water Saver Sod

Fescue Sod Available

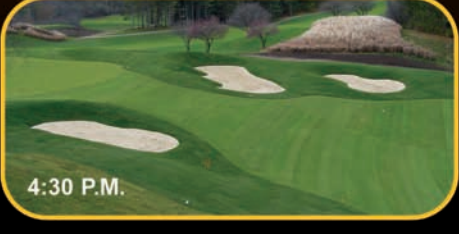
1-800-310-0402



7:45 A.M.



11:00 A.M.



4:30 P.M.

www.centernalsod.com

MIDWEST ASSOCIATION OF GOLF COURSE SUPERINTENDENTS



MIKE BAVIER...Candidate-National Board



wise to talk over with him, as his judgment is generally more sound and less expensive than that of the "expert" who is so often called in by club officials." MacGregor, John. 1928.

If turf in a specific area suffers because of poor drainage or lack of air movement, no amount of chemicals or fertilizers will remedy the problem. "Fertilizers will not effect permanent turf improvement if major injury is due to impervious water-saturated soil." Furthermore, "Better drainage (1) makes lands dry up earlier in the spring and prevents water standing after rains; (2) warms the soil so that the season is lengthened in both spring and fall; (3) ventilates and increases air content of the soil so that organic matter is decomposed; (4) removes the injurious salts and acids; (5) favors deep root development; (6) prevents winter kill; (7) prevents shrinkage and cracking of soils in periods of drought." O.J. Noer, 1929

Animals are still a problem on fine turfs especially when they are hunting for food. "How do you get rid of skunks rooting up the ground? ...is to remove the cause by getting rid of these grubs (also works for robins that will molest your greens)". McNamara, John. 1928.

Golfers still join clubs or go to courses to play golf. "I wonder when golf clubs will recognize the greenkeeper is the man who holds the key to their membership? He is working hard for his club, sometimes under adverse conditions. Give the greenkeeper a fair show, and he will produce. Anything pertaining to improvements which run into money, it is

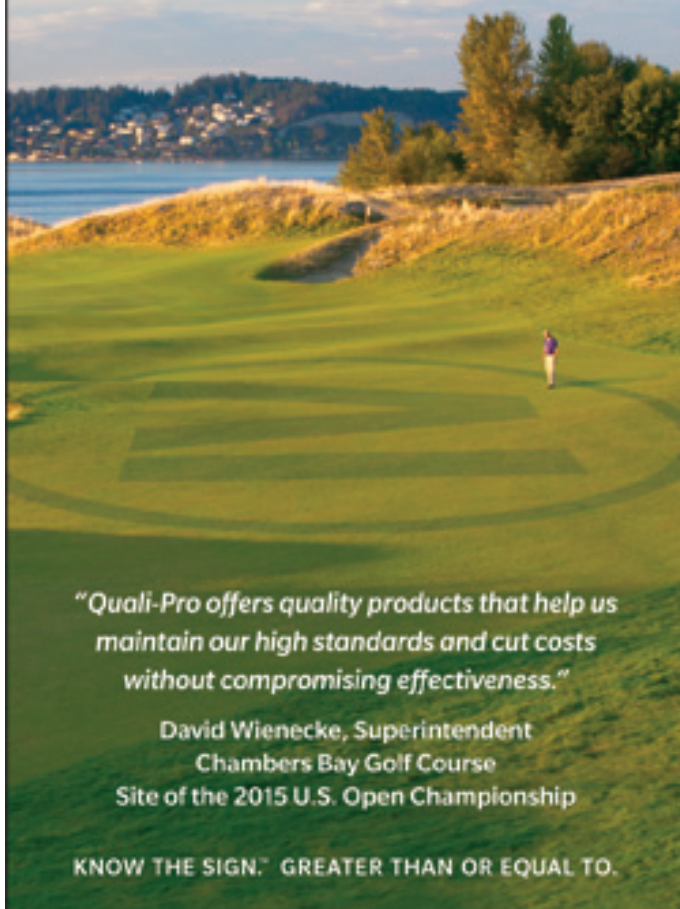
We live in a society where people want things right away. Impatience and entitlement rule the day and are principles that are brought to the golf course by the players. "Today golf courses are run in a business manner....We are living in a mechanical age today and most of our club members and some of our club officials, I am sorry to say, think mechanically. They have drifted far from nature. They are of the opinion that a greenkeeper should be able to restore a course to first class condition in two or three months." Edward Dearie, 1931

In times of budgeting and not knowing how you will get

(continued on page 11)



Course Quality RULES



"Quali-Pro offers quality products that help us maintain our high standards and cut costs without compromising effectiveness."

David Wienecke, Superintendent
Chambers Bay Golf Course
Site of the 2015 U.S. Open Championship

KNOW THE SIGN.™ GREATER THAN OR EQUAL TO.

At Quali-Pro, our manufacturing capabilities combined with the latest advanced formulation technologies allow us to deliver the products you want and need for less. For more information, contact Doug Suttor at 616-403-3983 or visit us online at quali-pro.com.

QUALI-PRO

Quality Turf & Ornamental Products

©2011 Quali-Pro. Quali-Pro is a registered trademark of MANA. Know The Sign is a trademark of MANA. Always read and follow label directions.

TURF TOUGH!

ASK ABOUT OUR TURF SPECIALS!

- New & Used Sales/Leasing •
- Full Service Department For All Brands •

HARRIS GOLF CARS

SALES & SERVICE

HOURS:
Mon.-Fri. 8-5 • Sat. 9-1



Tomberlin Electric Vehicles
are street legal!



Golf, Utility, Multi-Pass,
& Beverage Cars
Available

Tournament Fleet
Cars For
Special Events!

ILLINOIS LOCATION:

549 Heartland Drive
Suite A
Sugar Grove, IL 60554
(6 Miles West of Aurora)
(630) 466-5239

WISCONSIN LOCATION:

13900 Leetsbir Road
Sturtevant, WI 53177
(West of Racine on Int. 94)
(262) 886-2816

IOWA LOCATION:

9875 Kapp Court
Peosta, IA 52068
(7 Miles West of Dubuque)
(563) 582-7390

Please visit us online at www.harrisgolfcars.com



See how equipment and
agronomics can work together.

Only John Deere Golf offers both a full selection of golf maintenance equipment and soft goods from top name brands. Plus advice on how to pick the best of each for your course. Call us today.



Think Ahead.

Equipment Sales:
J.W. Turf, Inc. Hampshire, IL
847-683-4653

Agronomic Sales:
Chicago South: Paul Yerkes,
630-514-9373
Chicago North: Charles Hill,
630-768-9275