



Class C winner Virgil Range shows off his awesome new hair.



Coollest range ever



The other adult was biting my leg while this was taken



Brothers?



*The better half of MAGCS
(Beth Whitehouse, Sharon Riesenbeck, and Holly Gilmour)*



Holly Gilmour of JW Turf, and Tom Healy of Layne Western worked the registration table at Elgin CC.



Father and son. Zachary and Phil Zeinert.

(continued on next page)



The golf car that will be raffled off at the Midwest Turf Clinic to benefit the Wee One Foundation was on hand, thanks to Nadler Golf Car Sales.



Boots/Pumps



Maintenance/Landscaping



Food/Clubhouse



Engine Parts/Marking Tools



Fans/Safety Protection



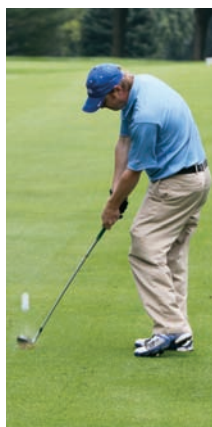
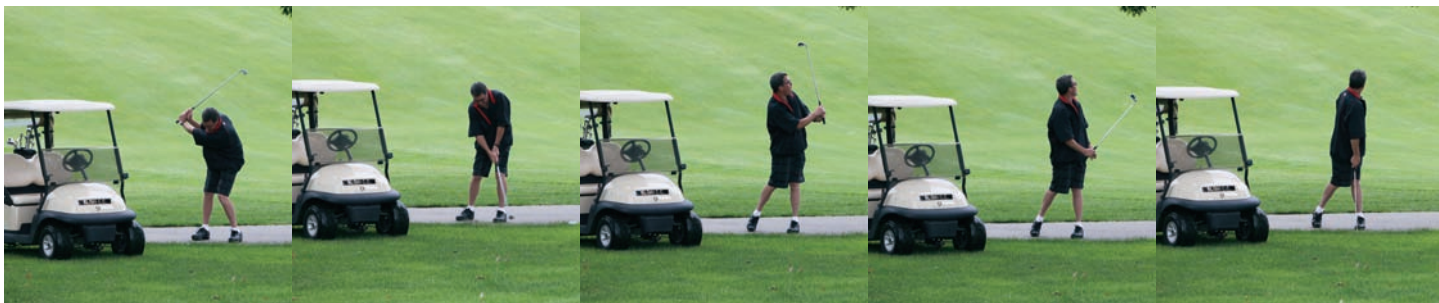
Sanitation Supplies

342 N. 400 E. Valparaiso, IN 46383

Phone Toll Free: 800.362.6951



www.phpdistribution.com



CLASSIFIEDS

.....
For Sale: 2 1998 Ryan GA-24 Aerators in good condition.
 Contact **Chuck Anfield** (he's not that bad) at Heritage Bluffs
 GC at 815-474-7155 for info.

For Sale: 1995 JD 2653 5 blade reel mower w/4082 hrs
 \$1500 obo. 1986 Toro GM 300 11 blade mower w/4292 hrs
 \$500 obo. 1993 Metermatic ½ yd top dresser \$2000 obo.
 Landpride 3 pt hitch tractor grading blade \$500 obo. Ryan
 walk behind slit seeder \$600 obo. 2000 JD 1600 w/ 2341

(continued on next page)

hrs, w/ spare front & rear wheel \$10,985 obo. 1995 JD F-935 with only 1303 hrs has solid tires on deck \$4100 obo. 1995 Hollrock ball picker, w/ 2 sets of plastic baskets and lots of spare parts \$400 obo. Electric hose reel w/ chemically rated hose \$500 obo. Any questions or inquiries please contact Steve Bychowski @ 847-253-2552 or sbychowski@rtpd.org.

For sale: Brand new Blackhawks home sweater, worn only to work, motivated seller who has been transferred. Call Blackhawks equipment manager for details—it turns out he has a bunch more with a lot of other names on them.



-OC



Growers of Quality Sod

SERVICE!

LOCAL GROWING FOR
EASY PICKUP OR QUICK DELIVERY.
DELIVERY ON TIME, EVERYTIME.

QUALITY!

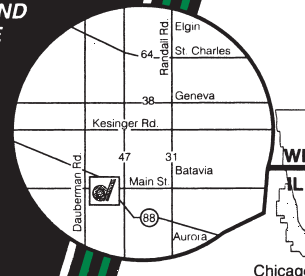
FEATURING
ELITE KENTUCKY BLUEGRASS,
BENTGRASS SOD, AND
TURF-TYPE FESCUE

- LOWER MAINTENANCE
- MORE DROUGHT & SHADE TOLERANT
- BETTER WEAR RESISTANCE

PRICE!

CALL FOR A QUOTE

NEW
PRODUCT



630-557-2900

MAIN STREET
11 MILES WEST
OF BATAVIA, IL

LOHMANN COMPANIES

MARENGO, ILLINOIS ■ 815.923.3400
PEORIA, ARIZONA ■ 623.322.7189
ARLINGTON, VIRGINIA ■ 703.986.3417

www.lohmanncompanies.com

Distinctive. Innovative. Memorable.



GOLF COURSE ARCHITECTURE
& PROJECT MANAGEMENT

Building on Experience




GOLFCREATIONS

GOLF COURSE CONSTRUCTION,
RENOVATION & RESTORATION

Professional Construction for
Maximum Performance



SPORTS FIELD CONSTRUCTION
& RENOVATION



Dirt~n~Turf


Consulting, Inc.

**USGA Physical
Analysis and Quality
Control**

Cultural Management

Soil & Tissue Analysis

**Local - Independent
Irrigation Analysis**



David Marquardt - Consulting Agronomist
630-251-1511 Dave@dirty-n-turf.com
www.dirty-n-turf.com

S
O
D

Sod That Fits Your Course To A Tee

*All varieties available as washed sod,
traditionally cut sod or big roll sod.*

Your Single Source for:

Bentgrass Varieties

- Penncross™ Bentgrass Sod
- Pennlinks™ Bentgrass Sod
- Penneagle™ Bentgrass Sod
- L-93™ Bentgrass Sod

Low Mow Varieties

- XL2000™ Bluegrass Blend
- Bluegrass Fescue Blend

*Installation and turf stripping capabilities available.
We can custom grow to your specifications.
Please inquire.*



3900 West 167th Street, Markham, IL 60428
708-596-7200
1-800-244-7200

Member:


WWW.HESOD.COM


Rock On!

Order
Online at
WaupacaSand.com



**Rock your landscaping with
low-maintenance stone!**

- Spruce up planting areas with
Decorative Stone - 13 varieties available
- Build landscape feature areas with
Boulders, Cobblestone, & Outcropping
- Create carpaths & walkways with
Pathway Aggregate



Waupaca Sand & Solutions
715-258-8566
www.WaupacaSand.com

HOLLEMBEAK

CONSTRUCTION INC.

SINCE 1969



Ridge Country Club - Hole 13
Chicago, Illinois



Golf Course Construction • Renovations • Bunkers
Clearing • Feature Grading • Shaping • Drainage
Tee and Green Construction • Cart Paths • Grassing
Shoreline Stabilization • Pond Construction and Dredging
Laser Tee Leveling • GPS Golf Course Mapping

P.O. BOX 103 • BIG ROCK, IL 60511 • 630-556-3891

MIDWEST PERSONALITIES

John Anderson, *Arthur Clesen Inc.*



Job Title: **Sales Manager**

MAGCS Member Since: **1982**

Date of Birth: **8-3-59**

Place of Birth: **Joliet, IL**

Current Residence: **Naperville**

College/Degree: **U of I : (2) B.S. Forestry & Orn. Hort. (lots of BS)**

Spouse/Children: **Wife - Debbie; Alicia, Ashley, Jake**

My Favorite Childhood Memory is: : **Playing Catch-One-Catch-All or Kick-the-Can in my neighborhood. We would have over 20 kids in the games and they lasted forever.**

My Personal Hero: **Michael J. Fox**

My Professional Mentors: **Art Clesen Jr., Dick Trevathan**

Favorite Actor: **Clint Eastwood**

Favorite Musical Performer: : **Eric Clapton**

Favorite Restaurant: **Meson Sabika**

Favorite "Pig Out" Food: **Anything from Dairy Queen**

Favorite TV Show: **"24"**

Favorite Color: **Orange & Blue...Duh!**

Favorite Professional Sports Team: **Black Hawks**

Favorite Pro Athlete: **Dennis Savard**

Favorite Pro Golfer: **Jack Nicklaus**

My Handicap Index: **Variable**

My Favorite Place to Play Golf is: **Woodruff GC - Joliet PD**

My Best/Most Memorable Round: : **All the way back to High School(1977). Match against Lemont HS at Cog Hill #3. Shot a one under 34 on the front nine. Only under par round in competition.**

The Most Interesting/Exotic Place I've been: **Definitely the highlight of my life was my visit to "Wall Drug"!**

The Book I've Been Recommending Lately: **Catholicism for Dummies**

The Last Great Movie I Saw: **Ninja Assassin**

In my Spare Time I Enjoy: **Fishing & Running**

Three Words that Best Describe Me: **Can I Help?**

What I Enjoy Most about My Job: **Getting to know people throughout our industry.**

What I Enjoy Least about My Job: **The perception people have about Salesman...We are not all "Slimy Used Car Salesman".**

I'm a MAGCS Member Because: **Easy...I have been a member for more than 25 years and the quality people hasn't changed. It makes meetings/events something to look forward to attending.**

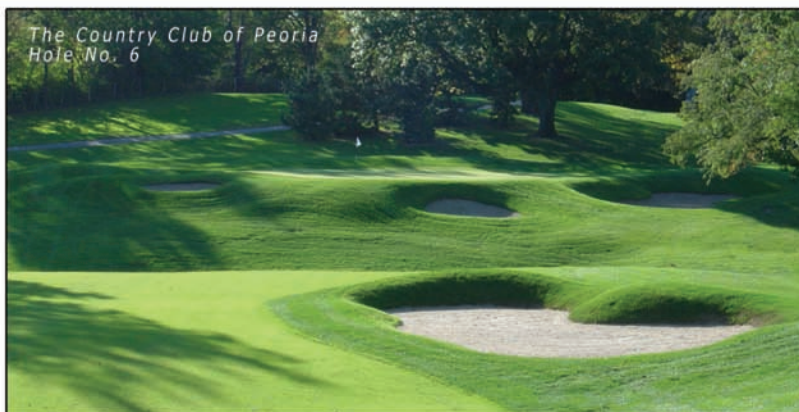


Michael J. Benkusky, Inc.
GOLF COURSE ARCHITECTURE

Over 20 years of golf course design experience.
Member American Society of Golf Course Architects



Lake in the Hills, IL 815-474-8385
www.mjbgolfdesign.com mbenkusky@mjbgolfdesign.com



EDUCATION RECAP

Charles Anfield, CGCS, *Heritage Bluffs Golf Course*



Invasive Weeds

The June MAGCS meeting was held at Elgin Country Club. Randy Lusher, Senior Sales Specialist for BASF (you know, the people who don't make the products, they make the products better) made a great presentation on Invasive Species Management Practices.

An invasive weed is any plant, not native to the community. The invasive plant tends to take over and cause harm. (Don't worry Gurke; I don't think he's talking about the poa on your greens) Many of these plants were brought over from Europe or Asia for gardening purposes. Over time, the seeds of the plants were spread by birds, wind and water. Most of these plants have no natural predators which causes their populations to overtake native plant communities. The result is a mono stand of the weed and overall loss of diversity within the plant community. The snow ball effect can affect the loss of species.

Some examples of invasive plants are: Buckthorn, Honey-suckle, Spotted Knapweed, Fragmites, Reed Canary Grass, Purple Loosestrife, Canada Thistle and Garlic Mustard.

Randy played an entertaining video, highlighting some of the problems with the invasive species.

Some control methods discussed were:

- Mechanical removal
- Control through the use of fire
- Cultural control
- Chemical control

Some additional tips include timing of weed control, specific herbicide rates, cut surface applications and use of adjuvants.

Randy had a hand out for everyone with many of the invasive weed control specific herbicide rates.

For more information on control of invasive weeds check MIPN.org (Midwest Invasive Weed Network) -OC



Randy Lusher explained cutting invasives such as buckthorn without a follow up surface application of herbicide can create more work in the future because of the sprouting that occurs.

SOIL and WATER

SCIENTIFIC ANALYSIS

V. J. ZOLMAN & SON

Turfgrass Soil and Irrigation Water Specialists Since 1964

Locally based services include Physical Soil Testing, Tissue, Lime and Audubon/Environmental Analysis

Fax (630) 964-9769 Tel (630) 964-9702

7100 Blackburn Ave. * Downers Grove, IL 60516
Lab Services by Brookside Laboratories Inc.

EXPERTISE

Included with every agronomic purchase.



We offer a comprehensive selection of industry basic manufacturer products, and LESCO products. Plus the expertise to help answer to help answer what will and won't work on your course. So call, and see how you can **Consider us part of your crew.**

JohnDeere.com/Golf

Agronomic Sales Rep

Nick Miethe, SOW 815-341-4438

Mark Toennies, GSR 618-204-9645



JOHN DEERE
GOLF



Kerry G. Anderson
Territory Manager

Valent U.S.A. Corporation
4819 Strong Road
Crystal Lake, IL 60014

Office: (847) 910-3130
Fax: (925) 817-5153
Cell: (847) 946-9138
E-Mail: kerry.anderson@valent.com



360 Schaumburg Rd.
Streamwood, IL 60107

(630) 830-7405

FAX (630) 830-9652

CLAUSS BROTHERS, Inc.
GOLF COURSE CONSTRUCTION AND RENOVATION
LARGE TREE MOVING



Bayer Environmental Science

John Turner
Sr. Sales Specialist - Golf

Tel: 630-443-7807
Fax: 630-443-7839
Mobile: 630-215-6110
john.turner@bayercropscience.com

RIVERWALLS LTD.

P.O. Box 562, Barrington, Illinois 60011

GOLF COURSE ENHANCEMENT

Shoreline Stabilization, Creek Crossings
Stream and Spillway Re-Construction

1-888-254-4155
OFFICE: 847-382-9696
FAX: 847-516-0116
MOBILE: 847-366-5400
DARRYL SCOTT BURKETT
C.E.O.
E-mail: riverwalls@hotmail.com

Since 1968 Division of STL Corp. BUY EXPERIENCE

PROFESSIONAL TURF & ORNAMENTAL PRODUCTS

Douglas Suttor
Midwest Area Manager
Dougs@quali-pro.com

QUALI-PRO
quali-pro.com

616.748.1977 Direct Line
616.403.3983 Cell
616.748.1988 Fax
800.979.8994 Corporate

2740 Sandpiper Lane, Holland, MI 49424

Makhteshim Agan
of North America, Inc.



C.P. ENVIRONMENTAL
ROAD SOLUTIONS

5616 Progress Road
Indianapolis, IN 46242

Cell: 773-315-0293
Office: 317-243-3248
Fax: 317-244-8461
Main Office: 888-888-3615

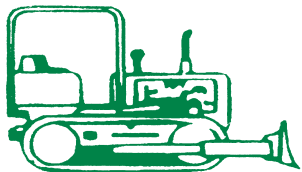
Email: jamesfee7522@yahoo.com
www.cpenvironmental.com

"WE MAKE TURF STRONGER!"

James Fee
Regional Manager
Chicago

C.P. Environmental





**KOELPER
GOLF COURSE
CONSTRUCTION
COMPANY**

DARRELL KOELPER
PRESIDENT

**GOLF COURSE
CONSTRUCTION & REMODELING**

MARENGO, IL

OFFICE: 815-568-8382
FAX: 815-568-1048
HOME: 815-568-6603



**HALLORAN &
YAUCH, INC.**
IRRIGATION
SYSTEMS

28322 Ballard Road
Lake Forest, IL 60045

Telephone: 847-281-9400
Fax: 847-281-9780



Tim Kelly
Sales
630.853.5582

Tree Pruning
Tree Removal
Land Clearing
Stump Removal
Plant Health Care
Lawn Maintenance

P.O. Box 249
Wayne, IL 60184
630.681.8733
www.abbotttreecare.com



*"Golf Course Work
a Specialty"*

LEMONT PAVING CO.

EST. 1957

MURPHY'S

Tracy Murphy

11550 Archer Ave., Lemont, IL 60439
(630) 257-6701 • FAX 630-257-5194



COMMERCIAL TURF & TRACTOR
CONTRACTING, SALES, SERVICE, PARTS

Trust Your Turf to Us!

- Terra Spike® Deep-tine Aeration • Overseeding & Slit Seeding • Core Collecting •
- Greens, Tees, Fairways, Sports Fields • Complete Turf Renovation •



1-800-748-7497 • Bryan Wood, owner

Serving the Industry for over 25 years

Check out our demo and trade-in equipment for sale
www.commercialturfandtractor.com



Master of the Links®

Course Accessories and A Lot More

www.masterofthelinks.com

Toll Free (888) TURF-888

Dan Howard (847) 420-5092

Jan Jarvis (312) 315-4123

On Course and the MAGCS thank our July advertisers.

Abbott Tree Care	Koepler Golf Course Construction
Arthur Clesen, Inc.	Layne Western
BASF	Lemont Paving
Bayer Environmental Science	Lohmann Group
Benkuskus	Martin Implement Sales
BTSI	Master of the Links
Burris Equipment Company	Nels J Johnson Tree Experts
Central Sod Farms	Palatine Oil Company
Chicagoland Turf	Phoenix Environmental Care
Clauss Brothers, Inc.	PHP
Commercial Turf & Tractor	Prime Turf
CP Environmental	ProGro Solutions
Dirt-n-Turf	Quali Pro
Dunteman Turf Farms	Rabine
Great Lakes Turf	Redexim North America
Gruenmann	Reinders Inc
H and E Sod Farms	Riverwalls
Halloran and Yauch	Syngenta
Hollembeak Construction	Valent USA
J.W. Turf, Inc.	Waupaca Sand & Solutions
John Deere Golf	