



Growers of Quality Sod

SERVICE!

LOCAL GROWING FOR
EASY PICKUP OR QUICK DELIVERY.
DELIVERY ON TIME, EVERYTIME.

QUALITY!

FEATURING
ELITE KENTUCKY BLUEGRASS,
BENTGRASS SOD, AND
TURF-TYPE FESCUE

- LOWER MAINTENANCE
- MORE DROUGHT & SHADE TOLERANT
- BETTER WEAR RESISTANCE

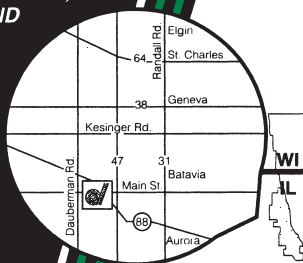
NEW
PRODUCT

PRICE!

CALL FOR A QUOTE

630-557-2900

MAIN STREET
11 MILES WEST
OF BATAVIA, IL



RTV900

**The utility vehicle that's built
as tough as a tractor.**



Hard working, dependable and tough: the Kubota RTV900.

- 21.6 HP diesel engine - Designed by Kubota engineers
- Hydrostatic power steering - Handle tight turns with ease
- Variable Hydrostatic Transmission (VHT) - No belts. No maintenance. No loss of torque.
- Hydraulic wet disc brakes - Smooth braking, even in mud and water
- 4-wheel drive - Power through the roughest terrain
- Ground-hugging suspension - Fully independent front and semi-independent rear suspension
- 4 different models - General, worksite, turf and recreational

Tractor tough. Kubota smart.
Martin Implement, Inc.
16400 104th. Ave.
Orland Park, IL 60467
(708) 349-8430

Kubota

EVERYTHING YOU VALUE
www.kubota.com





ON TARGET A.D.C.

On Target Animal Damage Control.
Specializes in the selective control of grubbing skunks
& Raccoons and Beaver removal. Our control
methods have proven to be 100% effective in
major golf courses in the Chicago area.



ON TARGET A.D.C.

PO BOX 469 CORTLAND, IL 60112

815-286-3073

wctech@ix.netcom.com

Bill Johnson

Technical Sales Representative



233 South Genoa Street

Genoa, Illinois 60135

Mobile: 815-762-9932

E-mail: bill.johnson@clearychemical.com

Cleary Chemical

Phone: 800-524-1662 • Fax: 732-274-0894

Specializing in Bedding Plants
Large Variety Fall Mums

ANTON'S

Greenhouses & Garden Centers

Rick & Bob Anton

ANTON'S OF KENOSHA

9140 Cooper Rd. (51st Ave.)

Kenosha, WI 53142

414/694-2666

Gary Anton

ANTON'S OF EVANSTON

1126 Pitner Avenue

Evanston, IL 60202

847/864-1134



Jeff Mazur

(630) 936-3179

Ben Struheck

(219) 771-4502



T. J. EMMERICH ASSOCIATES, INC
Irrigation Consultants

Office (262) 538-2776

Fax (262) 538-0118

Cell (262) 719-2728

EMAIL: tje@netstream.net

W28620 Beverly Lane

Hartland, WI 53029

Thomas J. Emmerich, CID, ASIC

SOIL and WATER

SCIENTIFIC ANALYSIS

V. J. ZOLMAN & SON

Turfgrass Soil and Irrigation Water Specialists Since 1964

Locally based services include Physical Soil Testing,
Tissue, Lime and Audubon/Environmental Analysis

Fax (630) 964-9769 Tel (630) 964-9702

7100 Blackburn Ave. * Downers Grove, IL 60516

Lab Services by Brookside Laboratories Inc.



360 Schaumburg Rd.
Streamwood, IL 60107

(630) 830-7405

FAX (630) 830-9652

**CLAUSS
BROTHERS, Inc.**

**GOLF COURSE
CONSTRUCTION AND RENOVATION
LARGE TREE MOVING**

www.allthatswildlife.com

Serving Chicagoland & Suburbs
& Greater Lake Geneva Area
24 Hour Service Available

- Humane Capture Methods
- Over 20 Years Experience
- Licensed & Insured



ALL THAT'S WILDLIFE

Nuisance Animal Solutions

Rick Wilberschied

President

P.O. Box 781

Harvard, IL 60033

815-560-7421

847-980-5561

630-291-8274

- Residential
- Commercial
- Municipal
- Golf Courses

The Much Anticipated Completion Habitat for Humanity

On May 30th 2008 the MAGCS' Habitat For Humanity project was wrapped up. The Class C Committee offered to install an entire landscape plan for a home that the Fox Valley Chapter of Habitat For Humanity built. I took the reigns as project coordinator and started making the necessary phone calls. I apologize if I pestered anyone a little too much, but this project was very important to MAGCS and myself.

There are so many people I would like to thank for their generosity and commitments. First and for most I would like to thank MAGCS for allowing me the freedom to start this great endeavor. It truly was a worthy cause and has helped a great family in need. Tim Anderson, CGCS was president of the Association when this undertaking started. He was a vital asset during the entire process. Thank you Tim for your guidance and willingness to help wherever you could. Greg Martin, Martin Design Partnership Ltd, deserves a show of gratitude for his contribution of the home site's landscape plan. The sod for the home was donated by Dunteman Turf Farms. Thank you Bob for all your cooperation and making sure we received the sod before the ground froze.

Thanks also go out to the Brickman Group's Steve Norman for all his efforts. The Brickman Group not only donated a large portion of the material, they also took care of the installation of the plant materials. Each year Steve takes his office support staff into the field and they donate their time on a special project. This year we were able to coordinate and they showed up on a rainy day this past May to complete the install. Not to mention Steve also coordinated the delivery of the materials, not only from his company, but also from Mariani Nurseries.

Jeff Barrett, Executive Director of Habitat for Humanity, Aurora Chapter said, "Fox Valley Habitat for Humanity is more than appreciative. The family for the home was not at home that rainy day when the final landscaping was installed. But I

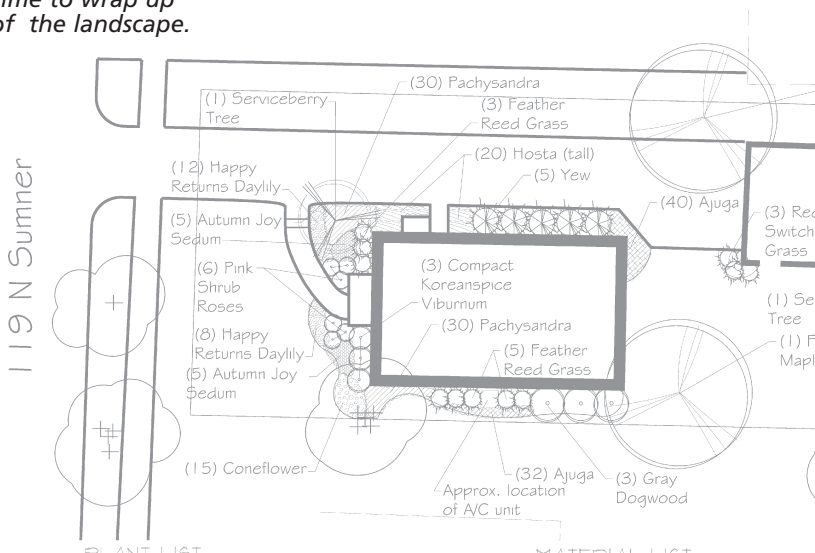


The Brickman Group's office staff donated their time to wrap up the installation of the landscape.

was there later when they arrived home and they were thrilled. Thanks so much for all you have done for Ramiro and Dora Ortega, their children, and for Habitat. We stand in awe."

Last and certainly not least, I would like to thank all the members of the MAGCS for their eagerness to help out for such a great cause. Most of all I would like to thank the Class C Committee and all of the people that were there on that beautiful December day laying all of that semi-frozen sod. Thank you all, this project could not have been completed without you.

-OC



PROFESSIONAL TURF & ORNAMENTAL PRODUCTS

Douglas Suttor
Midwest Area Manager
Doug@squali-pro.com

QUALI-PRO
quali-pro.com

616.748.1977 Direct Line
616.403.3983 Cell
616.748.1988 Fax
800.979.8994 Corporate

2740 Sandpiper Lane, Holland, MI 49424

Makhteshim Agan
of North America, Inc.



CLESEN
WHOLESALE

Your best source for
annual flowers.

- Begonias
- Grasses
- Petunias
- Coleus
- Impatiens
- Pansies

Tim Clesen ext 16

Tom Clesen ext 12

Evanston, IL 847-869-2257 www.clesen.com



**ILLINOIS
PUMP, INC.**

2525 S. Clearbrook Drive • Arlington Heights, Illinois 60005
Your reliable source for pumps, motors, equipment and professional service

24-Hour Emergency Service
Call 847-ILL-PUMP (847-455-7867)

♦ **WE RESPOND!** ♦

Sales • Service • Parts

James "Big Jim" Shanley

Phone: 847-439-9205 EXT 238
Fax: 847-439-9388
E-mail: jim@illinoispump.com



Bayer Environmental Science

John Turner
Sr. Sales Specialist • Golf

Tel: 630-443-7807
Fax: 630-443-7839
Mobile: 630-215-6110
john.turner@bayercropscience.com



**HALLORAN &
YAUCH, INC.**

IRRIGATION
SYSTEMS

28322 Ballard Road
Lake Forest, IL 60045

Telephone: 847-281-9400

Fax: 847-281-9780



Master of the Links®

Course Accessories and A Lot More

www.masterofthelinks.com

Toll Free (888) TURF-888

Local (630) 545-2474

Fax (630) 545-2782

RIVERWALLS LTD.

P.O. Box 562, Barrington, Illinois 60011

GOLF COURSE ENHANCEMENT

Shoreline Stabilization, Creek Crossings
Stream and Spillway Re-Construction

DARRYL SCOTT BURKETT
C.E.O.

Since 1968 Division of STL Corp. BUY EXPERIENCE

1-888-254-4155
OFFICE: 847-382-9696
FAX: 847-516-0116
MOBILE: 847-366-5400
E-mail: info@riverwalls.com

ACCURATE
TANK
TECHNOLOGIES

- Precision Tank Tightness Testing
- Upgrades for Tanks & Leak Detection Systems
- Install Underground & Aboveground Fuel Tanks
- Removal of Tanks

Your Complete, Professional Tank Experts

Please contact us at:

1-800-773-Tank or 630-375-6121

OFF COURSE

Virgil Range, Aurora Country Club



Racing Fever — Have You Caught It?

For those of you who haven't been bitten by the racing bug, here's a little something that might just change your mind. Imagine yourself strapped inside a piece of steel and carbon fiber doing 200+ miles per hour around an oval with 30-degree banks in the turns. Your helmet is bouncing violently between the cushioned tubular roll cage. Your fingers are throbbing from the kung fu grip you've had on the wheel. Your legs are aching from sitting, throttling, and braking for over 200 miles. Then you hear your spotter over the radio yelling "Get low! Get low!" Too late, your car is spinning, and then it skids sideways about 150 yards. Bam! You hit the wall and just hope that none of your colleagues induce further pain by bashing into you. Bam again! So much for that hope—you are now flipping over, landing on the hood of your once-beautiful car and sliding down the track upside down with a deadly combination of sparks and high-octane fuel shooting from your car. What are these guys thinking when they get into that car?

Racing is a sport. It is not just a bunch of grease monkeys driving fast cars into left turns. NASCAR is one of the most popular sports in our country now, boasting a fan base of millions. Did you know that there are people out there who wear Dale Jr. underwear? True story. The people who race these cars do so at great personal risk, and it is not just to get the moonshine to its destination before the local constable nabs them, as it was in the days of Junior Johnson. No, these guys put their lives on the line every time they get into their cars and strap in, and that's their everyday job! And it's a BIG money sport too—it takes over \$250,000 just to prep a car for the Daytona 500. That's why there are so many decals on those cars—it takes HUGE sponsor money to keep a race car on the track. Here's a little history—the first NASCAR-sanctioned race was held on Daytona's Beach Course on February 15th, 1948; and the first race held in Indianapolis was on May 11th, 1911. And it keeps getting bigger every year.



*Kevin DeRoo and Jimmie Johnson's car.
They're both good, but at different stuff.*

In NASCAR, there are 5 main team owners. Hendrick Motorsports has Dale Earnhardt Jr., Jimmie Johnson, and Jeff Gordon driving for them (if these names don't ring a bell for you, go back and read something stupid like Bull Sheet). Penske Racing has Kurt Bush and Ryan Newman as its main drivers; Joe Gibbs

Racing employs Tony Stewart, Denny Hamlin, and JJ Yeley; Jeff Burton, Kevin Harvick, and Clint Bowyer ply their trade for Richard Childress Racing; while Roush Fenway Racing has the greatest number of drivers, including Greg Biffle, Carl Edwards, Matt Kenseth, and Jamie McMurray. The current points leader is Jeff Burton, but I'm not going to go into how a driver gets points—it's very confusing.

Racing of various kinds has been available to fans in the Chicagoland area for some time. Indianapolis is within driving distance, and local dirt tracks always close by. But it was May 8th, 2000 when the Chicagoland Speedway opened in Joliet, Illinois, and brought professional racing into our back yard.

(continued on next page)

The track is a 1.5-mile D-shaped oval with 18-degree banking in one turn and 15-degree in the other, and yes, they are all left turns. I've heard that if you travel south of the equator they drive clockwise and all the jokes are about right turns. The facility holds 75,000 people, and the record NASCAR speed was set in 2002 by Kevin Harvick with a mark of 136.832 MPH.

Jimmie Johnson was the first NASCAR driver to taste the bubbly in victory lane at Chicagoland after winning a Busch Series race on July 14th, 2001. The next day, Kevin Harvick won the speedway's first NASCAR Cup event. On July 11th, 2008, NASCAR was back in Chicagoland with the Busch Series on Friday night and the Cup Series on Saturday night. These events are a weekend-long extravaganza. Half the fun is hanging out in the parking lot with the die-hards and their RVs, and ATVs, and Boo-Bees, and of course their bean-bag toss games.

On May 25th we welcomed back the IRL (Indy Racing League)

when Illinois native Danica Patrick, the first woman ever to win an Indy race, points leader Helio Castroneves, and the rest of the IRL racers participated in the Peak Antifreeze 300. Indy racing is totally different from NASCAR, with open-wheel cars boasting 900+ horsepower and top speeds over 80 mph faster than their cousins. Buddy Rice posted Chicagoland's fastest IRL speed at 224.064 mph.

Although I have never been to a NASCAR event (yet), I do enjoy attending dirt track racing. This is much different from NASCAR, but the principle is the same—drive fastest and cross the finish line first and you get champagne dumped on you.

Typically there are four different kinds of cars—Late Model, Modified or Sportsman, Street Stock, and Hornet. Late Models are the fastest and Hornets are slowest (being pretty much normal cars you'd find driving down the street with only a roll bar and some other minor requirements). The cool thing about dirt track racing is that it is fun, exciting, entertaining, and affordable for the whole family. It's like going to a Kane County Cougars game instead of a Cubs or Sox game—same great time with WAY less cost. Some local tracks where you might want to

satisfy your thirst for fast cars include the Grundy County Speedway in Morris, Illinois, and the LaSalle Speedway in LaSalle, Illinois. The World of Outlaws late model series and the Lucas Oil late model series both pay yearly visits to LaSalle, and offer some of the fastest dirt racing I have ever seen. The World of Outlaws late model division is arguably the best dirt track racing in the world. I would recommend

highly a trip to LaSalle, if you feel you might enjoy catching the racing bug without jumping in full-bore.

I probably have racing in my blood—my father was a racer, having competed with Rusty Wallace, Ken Schrader, and many other notable drivers. If you want to take the family out for a day of entertainment that won't empty your pocket, give racing a try. It's fast, fun, exciting, entertaining, affordable (if you don't go crazy buying the Dale Jr. undies), and it can be found just around the corner. Oh, and you'll LOVE the noise!

-OC



The track is really tilty.

Punch Holes And Pound Sand

Schedule your fall topdressing loads today!

- ✓ Fines Free™ Kiln Dried Topdressing Sand
- ✓ Fines Free™ Non Dried Topdressing Sand
- ✓ Topdressing Blends



715-258-8566 • www.WaupacaSand.com



KOELPER GOLF COURSE CONSTRUCTION COMPANY

DARRELL KOELPER
PRESIDENT

GOLF COURSE
CONSTRUCTION & REMODELING

MARENGO, IL

OFFICE: 815-568-8382
FAX: 815-568-1048
HOME: 815-568-6603

Jeff Leuzinger
President



Phone: 847.627.0538
Fax: 847.683.4087
E-mail: jeff@legacyproductsonline.com

47W115 Kelley Road
PO Box 485
Hampshire, IL 60140

TURF & ORNAMENTAL SUPPLY

WWW.LEGACYPRODUCTSONLINE.COM



Brian S. Winkel
Territory Manager
Professional Products

Syngenta Crop Protection, Inc.
835 Myers Road
Sugar Grove, IL 60554
Mobile 630-391-2170
Fax 630-466-3784
Toll Free 800-334-9481
www.syngentaprofessionalproducts.com
brian.winkel@syngenta.com



*"Golf Course Work
a Specialty"*

LEMONT PAVING CO.

EST. 1957

MURPHY'S

Tracy Murphy

11550 Archer Ave., Lemont, IL 60439
(630) 257-6701 • FAX 630-257-5194



COMMERCIAL TURF & TRACTOR CONTRACTING, SALES, SERVICE, PARTS

Trust Your Turf to Us!

- Terra Spike® Deep-tine Aeration • Overseeding & Silt Seeding • Core Collecting •
- Greens, Tees, Fairways, Sports Fields • Complete Turf Renovation •



1-800-748-7497 • Bryan Wood, owner
Serving the Industry for over 25 years
Check out our demo and trade-in equipment for sale
www.commercialturfandtractor.com

Paving the Finest Golf Courses on the North Shore

KAPLAN

TRUCKING & PAVING CO. INC.

847 • 949 • 1500

M.A.G.C.S. Member

P.O. Box 200 • Lincolnshire, IL 60069 • www.KaplanPaving.com

On Course and the MAGCS thank our August advertisers.

Accurate Tank Technologies	John Deere Golf
All That's Wildlife	JW Turf
Anton's Greenhouse	Kaplan Trucking and Paving
Arthur Clesen, Inc	Koepler Brothers
BayerEnvironmental Science	Layne Western Company
Brookside Laboratories Consultant	Legacy Products
Bruce Company, The	Lemont Paving Co.
BTSI	Martin Implement Sales
Burris Equipment Company	Master of the Links
Central Sod Farms	Municipal Well and Pump
Chicagoland Turf	Nels J Johnson Tree Experts, Inc.
Clauss Brothers, Inc.	On Target Animal Control
Cleary's	Palatine Oil Company
Clesen Wholesale	Phoenix Environmental Care
Commercial Turf and Tractor	Prime Turf, Inc.
Dirt-N-Turf Consulting	QualiPro
Duntelman Turf Farms	Rabine Paving, Inc.
Great Lakes Turf, LLC	Reinders
GRO Horticultural, Inc	Riverwalls Ltd.
Growing Solutions, Inc	Sediment Removal Systems
H & E Sod	Syngenta
Halloran & Yauch	Timberline
Hollembek Construction	TJ Emmerich Associates
Huber Ranch Sod Nursery	Valent, USA
Illinois Pump, Inc.	Waupaca Sand & Solutions



100%
From well-managed forests
www.fsc.org Cert no. XSC-COC-0000
© 1996 Forest Stewardship Council