

The MAGCS Charles Bartlett Award

Throughout his career Charles Bartlett served as an ambassador for the game of golf. He spent 36 years chronicling the major golf events of his time. He was a confidant to the great players of his era, and earned a wide spread reputation for his devotion to the game. Upon his death, then MAGCS President, Dudley Smith, established the MAGCS Charles Bartlett Award. This award is completely separate from the Bartlett Award given out by the Golf Writers Association of America. The GWAA Bartlett Award did not come into existence until 1970. The MAGCS Charles Bartlett Award was first presented in 1967 (the year of Bartlett's death). The award is presented to an individual who, through his or her devotion to the game of golf, exemplifies the spirit of Charles Bartlett – a true ambassador of the game. The Charles Bartlett Award is unique in that it is not given out annually, and the recipient is not selected by the MAGCS Board of Directors. Instead, past award recipients decide when a deserving candidate is to be acknowledged. During its 41 year history the award has only been presented 15 times. The recipients are:

CHARLES BARTLETT AWARD RECIPIENT	YEAR
Paul Voykin	1967
Oscar Miles	1968
Norman Kramer	1970
Ray Gerber	1971
Robert Williams	1975
Julius Albaugh	1983
Ken Zanzig	1986
Oscar Miles	1987
Mike Bavier	1990
Pete Leuzinger	1994
Tim Kelly	1996
Fred Opperman	1999
Mike Bavier	2000
Carl Hopphan	2003
Dan Dinelli	2008

This distinguished list includes: innovators, visionaries, authors, poets, mentors, activists, environmentalists, instructors,

public speakers, GCSAA Past Presidents, CAGCS Past Presidents, MAGCS Past Presidents, past recipients of the GCSAA Distinguished Service Award, past recipients of the GCSAA Leo Feser Award, and inductees into the Illinois Golf Hall of Fame.

Waterloo

Perhaps not as well known about Bartlett, was that despite his great love for golf, he was still affectionately classified as a "duffer" by his fellow writers. He carried a 46 handicap and often shot in the 140s at the Golf Writers Annual Tournament. The annual tournament has been held at The Dunes Golf and Beach Club in Myrtle Beach, South Carolina, since 1954. Hole #13, the esteemed "Waterloo," so named because of the large broad body of water that stretches down the entire right side of the golf hole, is a 590 yard, par 5. Not trusting his ability to drive the ball, it is reported that Bartlett never challenged the water at Waterloo, always opting instead to chip around the perimeter of the pond. Bartlett's fellow writers knew that this hole was his nemesis, so it was only fitting that on April 9, 1968, more than 60 golf writers gathered at Waterloo for a moment of silence and the dedication of a plaque that reads, "Dedicated to the memory of Charles Bartlett, *Chicago Tribune*, Golf Writers Association of America, who once scored a 22 on this hole and never hit a ball into the water." The plaque is still in place today. It is located by the white tee on the 13th hole at the Dunes Golf and Beach Club.

-OC

Sources:

- *Illinois PGA Golf Hall of Fame web site*
- *The Golden Age of Gold Design by Geoff Shackelford*
- *Golf Time Line web site*
- *Wikipedia web site*
- *Mike Bavier CGCS*
- *The Dunes Golf and Beach Club, Steve Hamilton CGCS*
- *The Portland Golf Club, Forrest Goodling, Golf Course Superintendent*
- *The Chicago Tribune Archive Service, (a number of articles written by Charles Bartlett and others)*

COMPOST

15 Yard Loads
30 Yard Loads
Screened 1/2 inch
Screened 1/4 inch

DIVOT MIX

30/70 Sand/Compost



GreenCyclesm

For more information and pricing, call Caroline
847-441-6606

Green Cycle Incorporated
400 Central Avenue, Suite 115
Northfield, Illinois 60093
847-441-6606
www.greencycle.net



ARTHUR CLESEN INC.

Dedicated to Service!

See the difference.

Quality products • Priced competitively • Prompt delivery

You get fast, courteous service from Arthur Clesen Inc.

We've staked our reputation on it.

Try us and see the difference.

▶ WHEELING p. 847.537.2177 f. 847.537.2210 ▶ MOKENA p. 708.444.2177 f. 708.479.9477

Nels J. Johnson Tree Experts, Inc.

Since 1930

A Tradition of Excellence.

More than 75 years of complete, dependable and economical tree service for residential homes, municipalities, schools, industrial areas, parks and over 125 golf courses.

847-475-1877

fax: 847-475-0037

www.nelsjohnsontree.com

FEATURE ARTICLE II

Derek Settle, PhD, *Chicago District Golf Association*

A 'Family Doctor'

The idea that became the CDGA Turfgrass Program

The Chicago District Golf Association's (CDGA) Turfgrass Program began in September 1985, when Dr. Randy Kane returned to Illinois from New York. Randy had completed his education, a Ph.D. at Cornell University under Dr. Richard Smiley. Dr. Smiley, a thorough scientist, had pioneered the idea that patch diseases were caused by previously unknown turfgrass pathogens. He showed that a suspected above-ground fungus, Fusarium, did not cause the dead patch symptoms of Kentucky bluegrass. Instead, Fusarium was a secondary colonizer, or saprophyte, and not responsible for the disease. Dr. Smiley focused his investigations belowground.

Over the course of multiple investigations, Randy Kane had found that soilborne fungi were capable parasites of roots. Smiley and Kane found that *Magnaporthe poae* (originally misnamed *Phialophora*) could breach the inner stele of roots and invade vascular tissue, and that it caused summer patch of Kentucky bluegrass. Xylem vessels that move water and nutrients were impaired by fungal infection. Compromised, the roots then rot. Aboveground the root disease appears as dead patches. At the time this idea generated controversy. However, the long-term outcome has been a whole-plant approach to solving turfgrass problems. The pathogens weren't actually 'new,' but they were as yet unstudied in a relatively new field called Turfgrass Pathology. In 1985, the field was only two decades old. The first comprehensive textbook of its kind, *Diseases of Turfgrass*, by Dr. Houston Couch, had first hit bookshelves in 1962.

The Idea

A trained turfgrass diagnostician was placed in Chicago in many ways owes itself to a relatively rare bacterial pathogen we now call *Xanthomonas translucens*. The story begins



Photo credit D. Settle

sometime in the 1930s, when an improved creeping bentgrass variety designated C-15 was born. By the 1970s, C-15 or 'Toronto' had become a popular choice for newly renovated golf greens in Chicago

The Family Doctor

Carl Hoppman remembers meeting Paul Butler in a room filled with some of the region's best turfgrass experts. It was at Butler National Golf Course, located in the west Chicago suburb of Oakbrook. Paul wanted answers. In 1980, the greens at Butler had died mysteriously just two weeks prior to the PGA Western Open. Among those attending the Oakbrook meeting were two highly regarded turfgrass pathologists; Dr. Houston Couch from Virginia, and Dr. Joe Vargas from Michigan.

Later, Carl would attend another meeting where the phrase 'Family Doctor' was introduced in regard to Chicago's golf courses. A small contingent of Chicago superintendents along with University of Illinois professors were

invited to attend a CDGA board meeting at Oak Park County Club. Carl admits the group never really knew what would happen. "Some on the CDGA Board of Directors were skeptical it

(continued on page 15)

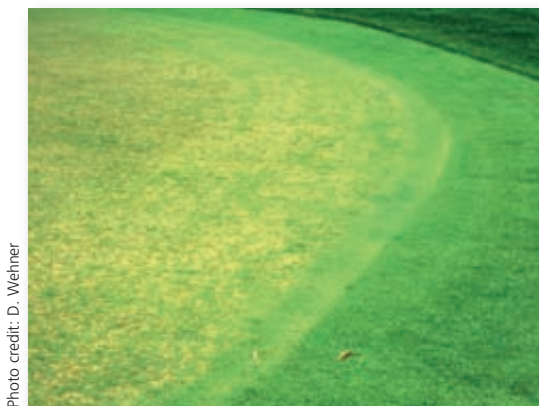


Photo credit: D. Wehner

Figure 1: Bacterial wilt of a green killing the creeping bentgrass variety Toronto/C-15.



Beauty.

Efficiency.

Display Aerators.

HYDROLogic
Yard Management Systems

800-422-1487 www.hydrologic.net

A Continuing Tradition of Quality
in Golf Course Renovation
Restoration and New
Construction



[608] 836-7041

FAX: [608] 831-4236

WWW.BRUCEGOLF.COM

was even needed. Many hurdles existed. It had never been done before." It took about fifteen minutes for the closed-door decision. Carl remembers, "When told, we were actually somewhat surprised. At the time we really didn't realize what the position would grow to mean. Today it represents a feather in the cap of the CDGA." Nevertheless, this unique position was initially funded for only one year. An annual review would determine if the 'Family Doctor' should stay.

The initial proposal the CDGA agreed to fund was written by Dr. Hank Wilkinson. Originally, it was conceived as a position within Hank's University of Illinois program. "Randy was hired to give Chicago a rapid response expert for golf pathology and other aspects of golf. I was his director on paper." Later, the Chicago-based position would be reclassified to the U of I Extension, and then to CDGA entirely. Dr. Randy Kane became the Family Doctor. He was largely self-sufficient and worked from a small lab he outfitted at an Oakbrook office complex, where the CDGA headquarters existed from the 1980s until 2001. His 'on call' hours were generally March through December. His patients were golf courses and their greens. His research plots were on select golf courses throughout the District.

Varieties to Improved Greens

Chicagoland has always been innovative with respect to golf course management. This included the rapid adoption of improvements, such as using an improved creeping bentgrass variety for a better playing surface. In the 1930s, the first improvement of bentgrass began under a joint project by the USGA and USDA. Dense, finely textured turfgrass that could withstand low mowing heights were selected.

The idea was based on early observations that superior-looking creeping bentgrasses could be found in patches across a green. We see the same phenomenon today and each superior patch likely originates from a single seed at establishment. Given frequent low mowing and time, the spreading stoloniferous bentgrass forms a patch possessing superior visual quality. In a way, the superintendent is an unknowing geneticist. Using cultural practices, he has produced a superior bentgrass clone for greens.

The Seed Problem

In the early 1900s only two sources of creeping bentgrass seed existed: Seaside and South German. Unfortunately, the seeded greens lacked uniformity once established. Each green eventually wound up looking like a patch-work of color, density, and texture. It is called segregation. Quilt-like, the greens were heterogeneous and of diverse genetic material. Those seed sources are very different from today's highly refined varieties. For example, the variety Seaside, for unknown reasons, contained a majority of plants that lacked vigor at green height.

Seaside was difficult to maintain. Its seed originated from creeping bentgrass swards indigenous to coastal regions of Washington and Oregon.

Understanding South German is even more complicated. Prior to World War II, 'South German' actually meant a seed mixture of many cool-season turfgrasses native to Europe. 'South German' seed was harvested from a natural field of good quality in what is now Austria. Thankfully, this grab-bag of seed contained bentgrasses (creeping, colonial, and velvet). Once in the Midwest, creeping bentgrass or *Agrostis stolonifera*, was best adapted since it out-survived or out-competed all other *Agrostis* spp.

The Early Solution

There was a simple solution; quit using heterogeneous seed and introduce a new vegetative variety propagated of creeping bent. Establishment would utilize the spreading above-ground plant part, the stolon. After culling numerous selections, twelve were deemed good enough by the USGA. The ultimate green, one of uniform quality, might just exist. But first, the twelve needed to pass one final test. They would be grown at multiple locations across the U.S., using a unique test plot design. Each would owe its genetics to a single plant seed of either Seaside or South German. A variety would be a genetic clone from a single mother plant.

The final USGA evaluation occurred at only a few US golf course locations. Each variety was established as a wedge within a pie-shaped circle. The best variety or varieties would become apparent given 'real world' conditions. It seemed to work. Julius Albaugh, a Chicago superintendent, wrote of his experience "...for thirty-four years we had some of the most uniform, true, fast, and beautiful greens in the Midwest." He recalled that in 1943 they began propagating stolons of Toronto from the USGA study to make a separate nursery at his course in Wilmette, Illinois – Westmorland Country Club. Its

experimental name was C-15. Of the pie-shaped wedges that radiated from the test green center, Toronto was deemed best. That same year, Westmoreland's number nine green would become the first Toronto green in the Midwest. Over a period of 10 years the remaining 17 greens were converted to Toronto. It had a spillover effect and Toronto become popular in Chicago – in the name of golf.

What did Toronto creeping bentgrass look like? A 1968 [USGA Green Section Record report by Alexander Radko](#) tells us. "Toronto/C-15 – thin-bladed, tight and upright growth; forms a true putting surface; exhibits a tendency towards reduced summer vigor; best in spring and fall." Dan Dinelli of North

(continued on next page)



Figure 2: The 2003 NTEP fairway/tee bentgrass test located at Sunshine Course in Lemont, IL during July, 2006.

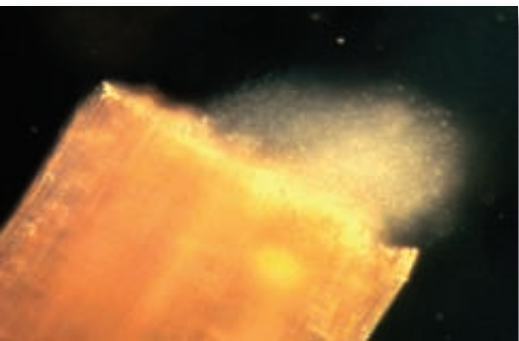


Figure 3: *Xanthomonas translucens* bacteria streaming in a cloud from a cut leaf blade.

Shore Country Club remembers Toronto as, “A wonderful grass, fairly tight. A wide leaf by today’s standards, but it performed well and proved hardy...” A growing group of private Chicago clubs began to intensively manage Toronto on their greens. At the time, 3/16 inch was the standard height of cut. Sand topdressing did not yet exist.

Other vegetative-clone varieties from the USGA test were also adopted for golf greens. Popular varieties would include; Arlington/C-1, Congressional/C-19, Cohansey/C-7, and Washington/C-50.

Toronto use ended abruptly in 1981. Toronto would be remembered by its experimental name and for a disease

in Chicago. The disease would initially be called ‘the C-15 problem’ or ‘C-15 decline’, though Cohansey and another vegetative selection named Nimisilla were also somewhat vulnerable. The rapid fall of Toronto dovetailed with other events. Putting green management changed around 1980 and resulted in higher levels of midsummer plant stress. Possibly it was the advent of light frequent sand dressing and a new potential for wounding. Maybe it was the adoption of lower mowing heights that neared 5/32 inch. Whatever the precipitating event, Toronto was suddenly highly susceptible to a previously unknown disease.

Toronto/C-15 Decline

Dr. Hank Wilkinson recently recalled the devastation of ‘C-15 decline.’ The decline was first reported affecting Chicago golf greens sometime in the late 70s (Figure 1). “I would say that C-15 decline focused the Illinois Turf industry on the need for an expert in pathology.” Hank was actually hired by the University of Illinois as a direct consequence of the C-15 problem. His early investigations indicated it was not a fungus and therefore not easily preventable. “I quickly determined it was a bacterium...”

A specific, genetic vulnerability of the C-15 clone (Toronto) was responsible. A bacterium we now know as *Xanthomonas translucens* pv. *graminis* had arrived in Chicago. A highly specific bacteria-host relationship is signified by pv., or pathovar. The pathovar *graminis* had it out for Toronto. The cloned bentgrass variety was doomed. So turfgrass scientists like Dr. Wilkinson recommended that Toronto be replaced using newer seeded varieties. At the time, Chicago’s creeping bentgrass greens shifted to Penneagle, released in the 1980s.

Mystery Solved

By 1980 Toronto had slammed the door on using clones as a tool to improve bentgrass greens – a valuable lesson had been learned. In 1984, Roberts and Vargas summed it up in *Golf Course Management’s* April issue. Beginning sometime

in the 1970s, Chicago had experienced an outbreak of a new turfgrass disease named bacterial wilt. Worldwide, another *Xanthomonas* species had been well studied — it was known as bacterial leaf blight of rice. Part of the mystery was that a bacterial pathogen had never been discovered affecting turfgrass until that 1980 PGA tournament in Chicago (cameras rolling). The bacterial disease began during extended cool, wet periods. A shift to warm, dry weather caused rapid wilt, then death. Frequent mowing spread the disease, and also provided the necessary wounding which the bacteria need.

The evidence was clear. During diagnostic examination by Vargas and others, opaque clouds of microscopic bacteria

would stream from cut sections of infected crowns and leaves (Figure 3). By fission, the rod-shaped bacterial cells divide and quickly generate a population explosion within xylem. Histological documentation using electron microscopy showed that the bacteria and their slimy polysaccharide exudates clogged vascular elements in Toronto’s leaf blades (Figure 4). Xylem are necessary for all water and nutrient transport from the rootzone to the leaves. Without xylem function, rapid death by wilt occurs.

Once isolated in culture, *Xanthomonas* is recognized by its characteristic glossy yellow colonies (Figure 5). Today, natural populations of both Toronto and the bacterium *Xanthomonas translucens* pv. *graminis* are considered virtually nonexistent. The normal cascade of plant defenses by Toronto was completely overcome by a highly virulent pathovar.

The ultimate outcome of C-15 decline was a rapid development of improved seeded bentgrass varieties. The Chicago event highlighted the need for genetic variation in turfgrass. Open pollination held the answer, as long as the seeded variety did not segregate highly. For example, since 1956 a creeping bentgrass variety named Pennecross had been used

increasingly on greens with good results. It looked uniform visually, provided a good putting surface, and had good resistance to disease.

Today, our skepticism about new bentgrass varieties continues. It is one reason we carefully watch entries in field trials like the [National Turfgrass Evaluation Program](#) (Figure 2). NTEP tests begin every five years. Turfgrass performance data is summarized annually. Information is freely available online at [www.ntep.org](#). In 2008, a new NTEP bentgrass trial for greens will be established across 17 states. In Illinois, bentgrass varieties will be evaluated on a Chicago golf course green where practice putting or chipping occurs. Dr. Tom Voigt will be the principle investigator. A list of entries is not yet available, but should be comparable to the 2003 test. In that variety trial, a total of 26

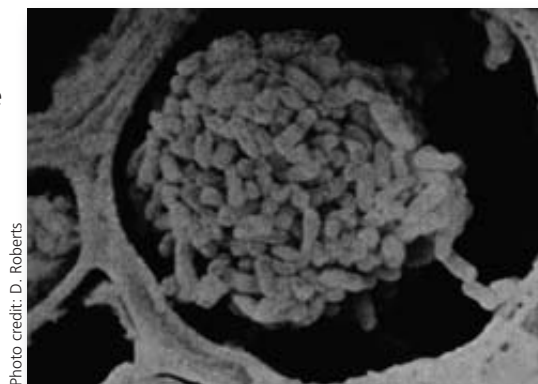


Photo credit: D. Roberts

Figure 4: Scanning electron micrograph of rod-shaped bacteria clogging the xylem of Toronto creeping bentgrass.

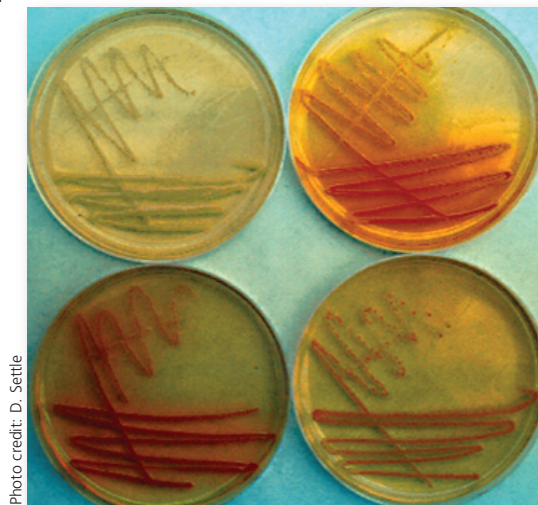


Photo credit: D. Settler

Figure 5: Glossy bacteria colonies isolated on sterile nutrient agar by a streaking method.

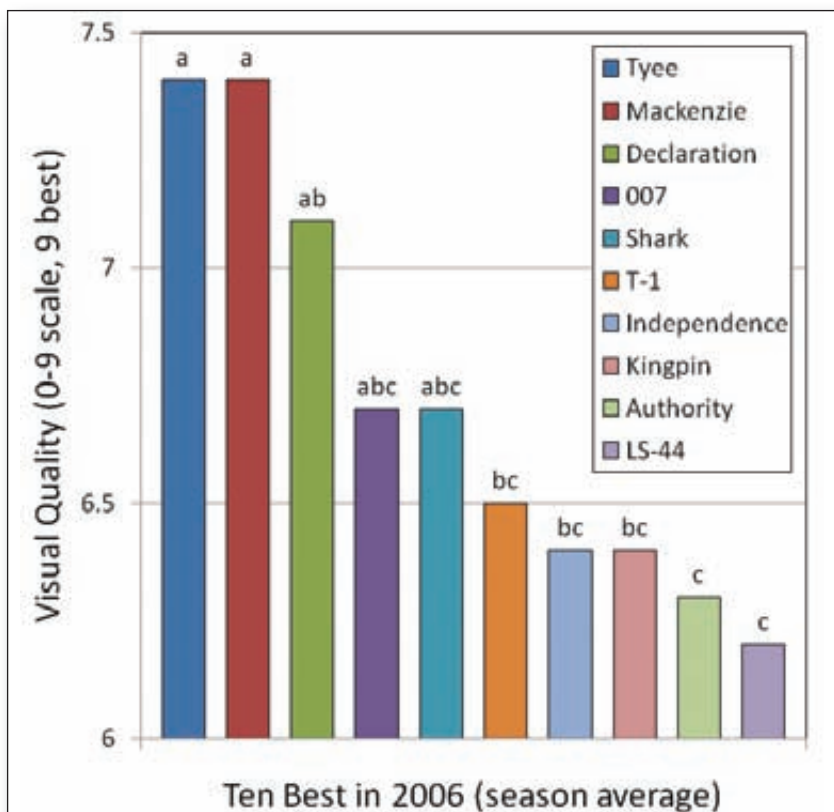


Figure 6: Average visual quality ratings of bentgrass varieties for greens during 2006 from the NTEP test in Urbana, IL.

creeping bentgrass entries were evaluated from 16 different seed companies. The bentgrass varieties tested were of two species. Twenty were creeping bentgrass (*Agrostis palustris*) and the remaining six were velvet bentgrass (*Agrostis canina*). All but three of those seeded varieties tested are now commercially available (Figure 6).

The CDGA Turfgrass Program

The C-15 event indirectly provided the impetus to establish a turfgrass scientist in Chicago. Dr. Randy Kane gained an encyclopedic knowledge of Chicago's golf courses and became a well-respected plant disease diagnostician. From his base in Oak Brook, and later Lemont, the plant pathologist faithfully served CDGA superintendents. Today, the CDGA represents 380 golf courses, with approximately 250 located in the Chicago region. Now it is my turn to assist those who manage the natural assets of a golf paradise known simply as Chicagoland.

This time my lessons are not inside Throckmorton Hall or outdoor field plots called Rocky Ford Turfgrass Research Center – Kansas State University. Nor are those lessons located in the Redding Building of a campus known simply as "Experiment Station" – University of Georgia's Griffin Campus. Today, the majority of my teachers are golf course superintendents, sometimes simply called "Sups." They and their crews have mastered the difficult art and science of intensive turfgrass management. Mostly my lessons are located at courses across Greater Chicago. Our main laboratory is outdoors and known as Sunshine Golf Course in Lemont, Illinois (Figure 7). Sunshine is cared for by Chris Painter, our superintendent. The teacher's aide is an individual we all know and respect, Mother Nature.

The dynamic attempt of the Turfgrass Program to help CDGA superintendents continues. It includes research, diag-

nostics, education, and new ways to communicate. Of these, diagnostics will always remain the focus and will continue to be done by traveling to see an actual site. Patterns of stress or injury are needed to understand if injury is biotic (e.g., fungal disease) or abiotic (e.g., environment or cultural practice). For 2007, 134 diagnostic visits were made in Chicago alone. Sixty percent of those occurred during July and August.

My job is pretty simple. It is about helping others through science. The long-version was penned by Randy Kane in 1985. "To help superintendents identify and control disease and other pest problems, conduct field research and product testing to determine best management practices to promote healthy turf, and to oversee CDGA educational programs related to turfgrass science." A shorter version might just as well say, "To help superintendents one tiller at a time." All that is required is membership in the CDGA – the rest is free. **-OC**

Acknowledgements

I am grateful for information that was provided in preparation of this article by [Carl Hopphan, Dr. Hank Wilkinson, Dan Dinelli, and Dr. Randy Kane.](#)

Literature cited

- [Albaugh, J. 1981. Resodding eighteen greens \(system 3\). A superintendent report. March 1981. 1-5.](#)
- [Anonymous, 2007. 2003 National bentgrass \(putting green\) test. National Turfgrass Evaluation Publication no. 07-4. USDA, Beltsville, MD.](#)
- [Mitkowski, N. M. 2005. Bacterial Wilt. Golf Course Superintendent Factsheet Series - University of Rhode Island. 2005:1.\[http://www.umassvegetable.org/soil_crop_pest_mgt/crops/documents/BacterialWiltFactsheet.pdf\]\(http://www.umassvegetable.org/soil_crop_pest_mgt/crops/documents/BacterialWiltFactsheet.pdf\)](#)
- [Radco, A. M. 1968. Bentgrasses for putting greens. USGA Green Section Record. March 1968:6, 11-12.](#)
- [Roberts, D. L., and Vargas, J. M. 1984. Bacterial wilt: a potentially devastating threat. Golf Course Management. April 1984:33, 37-41.](#)
- [Smiley, R., Craven Fowler, M., and Kane, R. 1985. Temperature and osmotic potential effects on *Phialophora graminicola* and other fungi associated with patch diseases of *Poa pratensis*. Phytopathology 75:1160-1167.](#)
- [Vargas, J. M. Jr. 2005. Management of Turfgrass Diseases. New Jersey: John Wiley & Sons. Pp. 97-101.](#)



24-Hour Emergency Service
Call 847-ILL-PUMP (847-455-7867)

♦ **WE RESPOND!** ♦
Sales • Service • Parts

James "Big Jim" Shanley

Phone: 847-439-9205 EXT 238
 Fax: 847-439-9388
 E-mail: jim@illinoispump.com

ILLINOIS PUMP, INC.
 2525 S. Clearbrook Drive • Arlington Heights, Illinois 60005
Your reliable source for pumps, motors, equipment and professional service

syngenta

POLYON

BASF

STANDARD
GOLF COMPANY



Chicagoland
TURF



1444 Bernard Drive
Addison, IL 60101

Phone 630.268.8871
Fax 630.268.1357



Nature Safe
Natural & Organic Fertilizers

Trent Bradford
630.742.2327

Walter Fuchs
630.258.8765

John Lebedevs
630.742.4905

Brian Baker
630.546.1454

Sean Hearden
630.742.4135



Growers of Quality Sod

SERVICE!

LOCAL GROWING FOR
EASY PICKUP OR QUICK DELIVERY.
DELIVERY ON TIME, EVERYTIME.

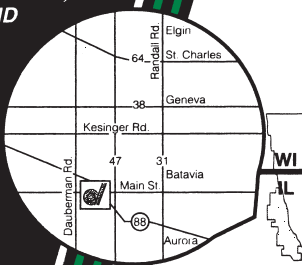
QUALITY!

FEATURING
ELITE KENTUCKY BLUEGRASS,
BENTGRASS SOD, AND
TURF-TYPE FESCUE
• LOWER MAINTENANCE
• MORE DROUGHT
& SHADE TOLERANT
• BETTER WEAR RESISTANCE

NEW
PRODUCT

PRICE!
CALL FOR A QUOTE

630-557-2900



MAIN STREET
11 MILES WEST
OF BATAVIA, IL

BTSI

Emerald Isle Solutions™

Emerald Isle True Foliar Nutrition Programs
Provide Increased Root Mass,
Controlled Tissue Growth,
Color, and Consistency.

CPR

4-0-1 Turf Fertilizer

Fairway
SeaQuential
6-0-2 with Liquid Chelated Iron

NUTRI-RATIONAL
TrueFoliar
N-P-K Plus
10-0-10

NUTRI-RATIONAL
TrueFoliar
N-K Balance
10-0-10

NUTRI-RATIONAL
TrueFoliar
SI
3-0-10

NUTRI-RATIONAL
TrueFoliar
Mg-Mn
6-0-0

PO Box 1325
Frankfort, IL 60423

800-732-9401
Fax: 815-463-8395

MIDWEST BREEZES

Chuck Anfield, CGCS, *Heritage Bluffs Golf Course*



Change

People are often afraid of change. Some people avoid change and think the easiest thing to do is to continue on doing the same thing. Lack of change is predictable, comfortable and provides a form of security. Lack of change can also be boring.

Two of our members recently jumped off the "edge" and made changes in their careers and their lives.

Ken Shepherd, Golf Course Superintendent at Prairie Bluff Golf Club woke up one day and decided he wanted to make a change. He had been working on a golf course for the last thirty six summers. He just wanted to do something different. He wanted to stay in horticulture because he still loves working in the outdoors. In a perfect world, he would like to stay working for the Lockport Park District. He inquired with his Director that if anything ever came up in the Parks Department he would be interested.

Several years later, a position opened for the Superintendent of Parks and the call came. "Ken can you help us out?"

He's excited about the change. There is ample opportunity to use his experience. Several soccer fields are in need of irrigation installation and new parks are being planned for development. The Parks Staff is also excited about the change. Kenny has a well deserved reputation for getting things done. After all, growing in a golf course can be a little demanding.

Without the duties of babysitting a golf course on weekends, he's excited about the new opportunities to do other stuff. One of his interests is working with a program called Team Focus. It's a camp for fatherless children. The leaders teach life skills to the children. Skills like changing a tire, gardening or tying a tie. Perhaps even teaching the children the most valuable lesson that it's important to care and help other people less fortunate than themselves.

We will miss Ken, or as I like to call him Shep-a-matic at the meetings.

He'll still be around doing what he does best, making other people around him better.

Brad Anderson, CGCS said he was looking for a challenge after eighteen years at Midlane Country Club. Brad grew in Midlane and was very happy to be part of its growth and

development. That being said, Brad is always looking for the next challenge. Some nice folks in Michigan gave him that opportunity.

He is now the Golf Course Superintendent at Birmingham Country Club, in Birmingham Michigan. BCC was founded in 1916 and is located about twenty miles north of Detroit. Brad says the local professional organizations, vendors and other Superintendents have been very supportive in his new job. He says most things about the Detroit area are very similar to Chicago. The only difference he finds is that he had to learn how to make a "Michigan left" while driving. I'm not sure what that means but Brad said anyone from Michigan would understand.

One of the challenges he faces is the short preparation time he has before the golf season gets into full "swing". He just recently started in his position a few weeks ago. Perhaps his biggest challenge will be the separation from his family until he gets established. He expects a full reunion in three months. He misses the hugs at night.

Brad will also be missed from the meetings. He is a Past President of the CAGCS and he was an Associate Editor for "On Course" magazine. As a matter of fact he used to write this column.

Sometimes change happens when we are ready or not. Our guys were ready.

Are you? **-OC**



Kerry G. Anderson
Territory Manager

Office: (847) 910-3130
Fax: (925) 817-5153
Cell: (847) 946-9138
E-Mail: kerry.anderson@valent.com

Valent U.S.A. Corporation
4819 Strong Road
Crystal Lake, IL 60014

PALATINE OIL CO., INC.

Over thirty-four years of caring service
and delivery of quality products



"One call does it all"



PALATINE OIL CO., INC.

847-358-3600

P.O. Box 985, Palatine, IL 60078



Your Single Source for:

- pH Control
- Fertigation
- Injection Equipment
- Irrigation System Monitoring & Alarm

Ask about our **NEW 990v!**



- P VFD Technology
- P Eliminates Overfeed Spikes from On/Off Control
- P Affordable
- P Remote Control from Irrigation Central
- P Optimize Treatment Costs
- P Easy to Use



PRODUCT * EQUIPMENT * SERVICE * SUPPORT

For additional info or to schedule a demo, call 800.677.8097

RTV900

The utility vehicle that's built
as tough as a tractor.



Hard working, dependable and tough: the Kubota RTV900.

- 21.6 HP diesel engine - Designed by Kubota engineers
- Hydrostatic power steering - Handle tight turns with ease
- Variable Hydrostatic Transmission (VHT) - No belts. No maintenance. No loss of torque.
- Hydraulic wet disc brakes - Smooth braking, even in mud and water
- 4-wheel drive - Power through the roughest terrain
- Ground-hugging suspension - Fully independent front and semi-independent rear suspension
- 4 different models - General, worksite, turf and recreational

Tractor tough. Kubota smart.
Martin Implement, Inc.

16400 104th. Ave.
Orland Park, IL 60467
(708) 349-8430

Kubota

EVERYTHING YOU VALUE
www.kubota.com

