

The New Sand Pro®



**This
Changes
Everything**

Introducing the revolutionary Toro® Sand Pro with its patent-pending Quick Attach System (QAS), operators can switch out most of the front, rear and mid-mount attachments in seconds. Realize the true potential of your equipment with the right tool for the job. The new Sand Pro with QAS, this changes everything.

Call your TPEC Account Executive today to schedule a demonstration of the latest in Toro® innovation. 1-800-861-8676.

TPEC



Count on it.



2007 BOARD OF DIRECTORS

PRESIDENT

Tim Anderson, Naperville C.C.
Home: 630-718-9601
E-mail: tjanderso@aol.com

VICE PRESIDENT

Dave Braasch, Glen Erin G.C.
Home: 608-757-2328, Office: 608-856-0240
E-mail: dbraasch@gleneringolf.com

SECRETARY / TREASURER

Tony Kalina, Prairie Landing G.C.
Home: 630-690-2683, Office: 630-232-1650
E-mail: tkalina@prairielanding.com

EXECUTIVE DIRECTOR

Luke Cella
MAGCS, 11855 Archer Ave., Lemont, IL 60439
Office: 630-243-7900, Fax: 630-257-0362
E-mail: luke@magcs.org

BOARD

Paul Bastron, Glen Flora C.C.
Home: 847-746-7212, Office: 847-244-6305
E-mail: pdbastron@sbcglobal.net

Harry Lovero, Orchard Valley G.C.
Home: 630-894-0453, Office: 630-907-8998
E-mail: lsupt1@aol.com

Tom Prichard, Ivanhoe Club
Home: 815-337-9217, Office: 847-566-2050
E-mail: tprichard@ivanhoeclub.com

Todd Schmitz, Phillips Park G.C.
Home: 630-851-5636, Office: 630-898-5296
E-mail: tschmitz@aurora-il.org

Dan Sterr, Stonebridge C.C.
Home: 630-357-4874; Office: 630-898-6139
E-mail: Djsterr@aol.com

Scott Witte, Cantigny G.C.
Home: 630-497-1909, Office: 630-260-8182
E-mail: switte@tribune.com

PRESIDENT EMERITUS

Gary Hearn, Salt Creek G.C.
Home: 630-540-1460, Office: 630-773-4790
E-mail: g.hearn@worldnet.att.net

COMMERCIAL REPRESENTATIVE

Sharon Riesenbeck, Waupaca Sand & Solutions
E-mail: sharon@waupacasand.com

CLASS 'C' REPRESENTATIVE

John Ekstrom, Hinsdale Golf Club
Home: 815-436-2281, Office: 630-986-1323
E-mail: snapp79@aol.com

TURFGRASS ADVISOR

Dr. Randy T. Kane
University of Illinois & CDGA
630-257-2005

EDITORIAL CHAIRMAN

Scott Witte
E-mail: switte@tribune.com

ASSOCIATE EDITOR

John Gurke
E-mail: Boomding@aol.com

Brad Anderson
E-mail: bradkim@earthlink.net

GRAPHIC ARTIST

Mark Karczewski

This publication is not copyrighted. We would like to share our articles with any who would like to use them, but please give the author and *On Course* credit.

JANUARY 2007

Volume 60 No. 8

FRONT COVER

Your 2007 Board of Directors

Back Row (L-R) Sharon Riesenbeck, Harry Lovero, Dan Sterr, Ed Braunsky, Scott Witte, John Ekstrom, John Gurke, Tom Prichard, Paul Bastron.

Front Row (L-R) Luke Cella, Tony Kalina, Tim Anderson, Gary Hearn, Dave Braasch, Todd Schmitz.

Photo Credit: Jim Trizinski.

ON COURSE WITH THE PRESIDENT

3 Accept the Challenge, Become Engaged

Tim Anderson

DIRECTOR'S COLUMN

5 Planning Ahead: 2007 MAGCS Calendar of Events

Todd Schmitz

6 MIDWEST BREEZES

Brad Anderson

SUPER -N- SITE

9 Jason Funderburg and Jeff VerCautren -N- Rich Harvest Farms

Luke Cella

FEATURE ARTICLE

13 Past and Present: Dollar Spot Research from Kansas State to Chicago

Derek Settle, PhD

NEWS FROM ALLIED GROUPS

19 Golf Course Builders Association Hosts Annual Meeting and Invites MAGCS Members

Sharon Riesenbeck

TECHNICALLY SPEAKING WITH



23 Technicians Using Technology

Ted Soenksen

26 THE BULL SHEET

John Gurke

The Midwest Association of Golf Course Superintendents (MAGCS), founded December 24, 1926, is a professional organization whose goals include preservation and dissemination of scientific and practical knowledge pertaining to golf turf maintenance.

We endeavor to increase efficiency and economic performance while improving and enhancing the individual and collective prestige of the members.

The MAGCS member is also an environmental steward. We strive to uphold and enhance our surroundings by promoting flora and fauna in every facet in a manner that is beneficial to the general public now and in the future.

All editorial and advertisement inquiries should be directed to Luke Cella, Publisher, *On Course*, 11855 Archer Avenue, Lemont, IL, 60439. (630) 243-7900 or visit www.magcs.org for rates and requirements. Statements of fact and opinion are the responsibility of the authors alone and do not imply an opinion on the part of the officers or members.



Nels J. Johnson Tree Experts, Inc.

Since 1930

A Tradition of Excellence.

More than 75 years of complete, dependable and economical tree service for residential homes, municipalities, schools, industrial areas, parks and over 125 golf courses.

847-475-1877

fax: 847-475-0037

www.nelsjohnsontree.com

PALATINE OIL CO., INC.

Over thirty-four years of caring service
and delivery of quality products



"One call does it all"



PALATINE OIL CO., INC.

847-358-3600

P.O. Box 985, Palatine, IL 60078



ON COURSE WITH THE PRESIDENT

Tim Anderson, CGCS Naperville Country Club

Accept the Challenge, Become Engaged

Winter is the perfect time for planning and preparation. Through out the winter most of us spend time developing programs for the year to come and working on office projects that we can never find time for during the season. This principal holds true for our association as well. During the off season committees work diligently to lay the ground work for the year ahead. This year the committee assignments are:

Recognize that if you are approached regarding service to the association then it is because your actions and character have already identified you as someone who is ready to serve.

- Strategic Planning - Tim Anderson
- Scholarship / Financial Task Force - Dave Braasch
- Secretary / Benevolence - Tony Kalina
- Education - Scott Witte
- Advocacy and Compliance - Paul Bastron
- Golf - Dan Sterr
- Membership and Unemployment - Tom Prichard
- Media and Public Relations / Bylaws and Nominating - Gary Hearn
- Arrangements - Todd Schmitz
- Editorial / *On Course* - Harry Lovero
- Class E Advisory / Hospitality Suite - Sharon Risenbeck
- Class C Advisory - John Ekstrom
- Past Presidents Council - Ed Braunsky

Last month I urged everyone to participate in the MAGCS in the form of membership renewal. This month I would like to take that idea one step further and urge all members to participate by becoming actively engaged in the association. Local chapters cite a lack of member involvement as their #1 concern. Members are the greatest resource that the MAGCS has to offer. It follows that engaging **all members** to actively participate in the association is the key to providing a valuable experience for the entire membership.

Participation can take many forms. For those that have the desire there is the opportunity to become active at the committee or board level. Often members are reluctant to volunteer for this type of service because they are not sure if they are ready. Recognize that if you are approached regarding service to the association then it is because your actions and character have already identified you as someone who is ready to serve. Feel good about the opportunity and accept the challenge. It is not too late to volunteer for 2007 committees.

Participation is not limited to committee service. Frequently participation is more event or task oriented. There are countless ways to become engaged. Volunteer to host a meeting. Work a registration table. Provide financial sponsorship at an event. Attend an educational seminar or golf event. Place an ad in the magazine. Utilize the employment service. Mentor an employee in the value of establishing a network of professional peers through association participation. Write an article for *On Course* or persuade an employee to write an article. Inform the association of illness or benevolence. Encourage a child to apply for a MAGCS scholarship. Donate to the scholar-

ship fund by participating in the raffle at the hospitality suite. Support the charitable activities of the association through participation at a betting hole. Support research through a gold or silver contribution. Attend a social event like the dinner dance, the hospitality suite, or the Cougars Game. Pass along a copy of *On Course* to an employer or fellow superintendent. Recruit a new member.

Most associations are based on the principals of networking, education, fraternity, and the philosophy of giving back. The same hold true for the MAGCS. The bottom line is that the MAGCS is founded on its members and your presence and participation is what allows the association to evolve. If even a single member forgoes the opportunity to be actively engaged then all members are denied the opportunity to gain from their experience and the association is not able to achieve its full potential.

In today's world we are all starved for time and overloaded with responsibilities. Proper planning allows us to cope with these challenges. This winter as you plan for the year ahead take some time to become engaged and plan your participation in the MAGCS.

The Golf Industry Show is scheduled for the week of February 19th - 24th. The MAGCS hospitality Suite is schedule for the evening of February 22nd from 6:00 p.m. til 10:00 p.m. at the Anaheim Hilton. A special thanks to the Gold Tee Sponsors for hosting this outstanding event. To those attending the GIS - have a safe trip.

See you in Anaheim!

Tim

Tim



*"...MAGCS is
founded on
its members..."*

BIGHEAD

Mulch, LLC

- Double and Triple Processed Mulch
- On-Site Custom Grinding and Coloring
- Debris Hauling

Paul Frankowski
708-913-3916



Planning Ahead: 2007 MAGCS Calendar of Events

The year has finally come to an end, "weather" we wanted it or not, in the form of a blanket of slush and snow, then freezing temperatures. This past November I was counting down the events I had planned for the year, looking forward to some "down time" and a chance to catch my breath once they were over. That time came and went in the matter of a day. Then it was back to event planning for the new year. People unfamiliar with our industry always ask, "What do you do in the winter time?" That in itself is an article for another time, but I will say that every year that "down time" seems to be shorter and shorter.

This past year on the Arrangements Committee was a learning experience for me. Planning events and finding host sites has its ups and downs as expected. What caught me by surprise was the need for learning the schedule of and planning around the events of other organizations. I'm writing this article sooner than I have in the past in order to help avoid future event conflicts. My goal this year is that our members have the opportunity to attend events, not to have to choose between them. I hope that by announcing our schedule early it will give the membership and other organizations enough time to plan appropriately. Here are our MAGCS events for 2007:

*My goal this year
is that our
members have the
opportunity to
attend events,
not to have
to choose
between them.*

Wednesday, January 10th	GCSAA Seminars at Midwest Golf House Topic: "Taking Control of Grassy Weeds"
Tuesday, January 23rd	Jason Funderberg/Jeff VerCautren and Rich Harvest Links Winter Meeting
Thursday, February 8th	Assistants Workshop at Midwest Golf House
Thursday, February 22nd	MAGCS Hospitality Room at Anahiem
Tuesday, March 13th	MAGCS Seminar at Midwest Golf House Dr. Derek Settle and Dr. Bingru Huang
Monday, April 30th	Chuck Ardell and Indian Lakes Resort Spring Scramble
TBD - May	Tom Prichard and Ivanhoe Country Club ITF/MAGCS- Spring Scramble
Monday, June 18th	Craig Lewis and Shepherds Crook Dom Grotti, Senior and Class C Championship
Saturday, July 21st	Kane County Cougars Game
Tuesday, August 7th	Dave Drendel and Mistwood Golf Club
Monday, September 17th	Larry Flament and Stonewall Orchard Golf Club MAGCS Championship
Monday, October 1st	Ken Shepherd and Prairie Bluff Golf Club ITF/MAGCS-College Championship
Wednesday, November 7th	Tom Lively and Medinah C.C. MAGCS Turf Clinic
Saturday, November 17th	Ben Exline and Eaglewood Resort Fall Dinner Dance
December 5th-7th	IPTC at Pheasant Run

(continued on page 31)

Midwest Breezes



Shoreacres' Bunker Work

This fall the grounds staff at Shoreacres restored the greenside bunker on the left side of the Redan hole, #14. A comparison of the most recent aerial photo of the course with the 1937 aerial photo reveals that the original bunker had become two bunkers. Tim restored the hazard to one continuous bunker.

To put the perimeter and embankments of the bunkers at Shoreacres back to their original shape, Tim's men stripped the sod and carefully removed the layers of sand which had accumulated on the banks from wind and golf shots. All this work was done with hand shovels.

The old sand was removed and the floor of the bunkers was cut to a depth of eight inches below the grass line to hold eight inches of Thelens #1 Mason sand.

An eight-inch deep and ten-inch wide drainage trench was cut for four-inch rigid, plastic tile to be laid on a one-inch bed of number nine stone. Additional number nine stone was added to nearly cover the four-inch pipe. The final three inches of the drainage trench was back-filled with pea gravel.

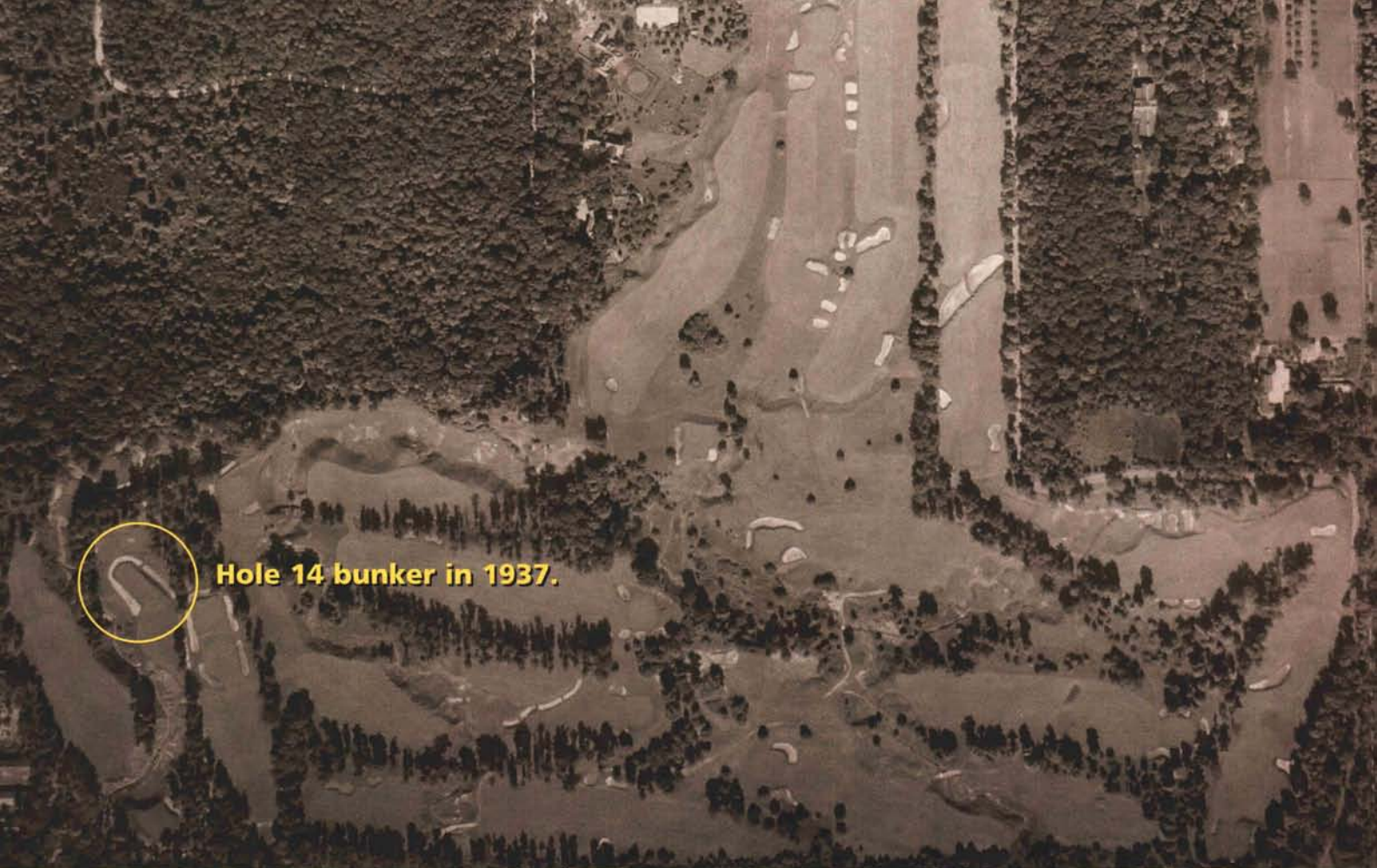
Before the sand was brought to the bunker, the slopes were sodded. The sod was held on the steep slopes with biodegradable sod staples.

The sand was placed in the bunker in two four-inch lifts. Each lift was plate compacted.

Brad Anderson, CGCS



Redan Hole, #14 completed and viewed from the opposite side of the ravine.



Hole 14 bunker in 1937.



Hole 14 bunker in 2006.

The handwork of the crew at Shoreacres.

Above: Men check the pitch of the solid 4" drain tile installed in the hand dug trenches.

Middle: One of the lateral drain lines in the trench prior to pea gravel backfill.

Below: This image shows two important features of this project. The first is the immense size of the bunker and the second is the severity of the slope on the greenside edge.



Jason Funderburg and Jeff VerCautren -N- Rich Harvest Farms



The Funderburgs, Jason, Bridget, Jackson and Jaycie.



The VerCautrens, Amanda, Jenna and Jeff.



This month, MAGCS members have the opportunity to visit Rich Harvest Farms located in Sugar Grove. The golf course has two superintendents, Jason Funderburg and Jeff VerCautren.

(Ed. note: The intended idea was to have Jeff write Jason's and Jason write Jeff's profile for the article, however I've combined both articles into one.)

Superintendent Funderburg

Born and raised in Belvidere, Illinois, Jason Funderburg is thirty-four year old. He currently resides in DeKalb, with his wife Bridget, two-year-old son Jackson, and six-month-old daughter Jaycie. Jason's free time is spent enjoying his family and friends.



A green complex at Rich Harvest Farms. Notice the red tailed hawk in the upper left hand sky in the image.

Oddly enough, Jason was introduced to the golf business through carpentry. While building his mother's retirement home in Hot Springs Village, Arkansas, he decided that it was time for a change. With his passion for the game of golf, what better way to get a discounted rate than to take a job on the maintenance department at one of the village courses. Working for Don Jensen at the Magellan course in Hot Springs Village, Jason found his true calling, and decided to make a career of it.

Knowing the importance of education, he returned to the Midwest and attended Kishwaukee College, where he graduated with an Associates of Applied Science in Horticulture, and a Certificate in Turf and Golf Course Management. While fulfilling his academic requirements, Jason wanted to challenge himself with an internship at one of the area's top golf courses. He was given the opportunity to do so at Rich Harvest Farms. Upon graduation Jason had a chance to get involved with the grow-in of a golf course, so he accepted an assistant position at the Golf Club at Timber Pointe in Poplar Grove, Illinois. Just prior to Timber Pointe's opening Jason had the opportunity to return to Rich Harvest in the capacity of

(continued on page 10)

an assistant superintendent. His desire to manage at a high-end facility proved greater and he went back to work at Rich Harvest Farms. After spending one-and-a-half seasons as assistant, the ownership made the decision to make a change and promoted Jason along with Jeff VerCautren as co-superintendents.

When asked what he felt was the most difficult part of his job, Jason answered with “personnel management,” and wanted to share an inspirational quote of Vince Lombardi:

“Leadership rests not only upon ability, not only upon capacity; having the capacity to lead is not enough. The leader must be willing to use it. His leadership is based on truth and character. There must be truth in the purpose and will power in the character.”

Superintendent VerCautren

Born and raised in the Quad Cities, Jeff also lives in DeKalb with his wife Amanda and three-year-old daughter Jenna. They’re expecting a new born in June (good timing).

His other interests are classic cars, hunting, and fishing.

Jeff entered the golf course business by loving the outdoors. He had worked on an apple orchard through high school, and his father wanted a place where he could play golf for free. This led Jeff to try his hand in the golf course industry. Shortly thereafter, he started at Short Hills Country Club as a laborer and has loved the profession ever since.

After graduating from Riverdale High, in Port Byron, Illinois, He went to Black Hawk East Junior College in Agri-Business Horticulture. From there he received an Associates Degree in Science while playing college basketball for Black Hawk. Upon graduation he went to Illinois State, continuing his studies in Agri-Business Horticulture for two more years.

Jeff started his career at Short Hills Country Club in East Moline, working summers while going to Illinois State University. While at school he worked at Crestwicke Country Club and Bloomington Country Club. From there he helped with the grow-in of TPC at Deere Run as an Application Foreman. Jeff transferred to TPC of Prestancia, in Sarasota,

Florida, as an Assistant. He eventually worked at three different TPC courses in Florida, helping with PGA and Senior PGA Tournaments. Jeff wanted to get back to the Midwest, and that brought him to Rich Harvest Farms in 2002.

The Course

Rich Harvest Farms was started with three holes in 1989 and completed 18 holes in 1998. The course sits on 250 Acres with 2000 Acres of property for the farm. The greens are Penncross/Pennlinks, with Penncross tees and Penneagle fairways. There are two practice facilities, one with bentgrass tees and one with low-mow bluegrass. The owner, Jerry Rich, was the designer, with the help of Greg Martin Design. It is a private facility with many fundraising events. Every hole has signature-hole characteristics. Twelve holes on the course are heavily treed and six are more of a links style. There are numerous holes with multiple tees, so one can play the hole as a par three, four, or five. Thirteen holes on the course have some sort of water feature. Rich Harvest Farms upgrades the course yearly by adding tees or renovating bunker surrounds. This winter they are in the process of moving into a new maintenance facility that is more centrally located (we are all invited to tour the new shop after our meeting this January).

The most difficult aspect of the job is dealing with the environment and shaded greens. Jeff and Jason have been working towards Audubon certification at the course. They have completed the Water Conservation, Environmental Planning, and Wildlife and Habitat Conservation certification. They hope to complete the whole certification by the end of the 2007 season.

Past achievements at Rich Harvest Farms include the 2006 **Golf Digest** “America’s Best Retreat Course”, where it was ranked 21st, the only course in Illinois. In the 2005-2006 **Golf Digest** “America’s 100 Greatest Golf Courses” it ranked 45, the largest jump (54 places) a course has made in the ranking history. In 2003 and 2006 RHF was CDGA’s Toughest Course in District. In 1999 it was named in **Golf**

*It’s a relationship
that’s a lot like
a good marriage:
a lot of communi-
cation and a lot
of give and take.*

Digest’s “Top 10 New Private Courses in the Country.” Rich Harvest Farms is hosting the 2007 NCAA Regional in May and the 2009 Solheim Cup in September.

The Team

Working with shared superintendent responsibilities has been a great experience for both. Jeff relates, “I am with Jason more than anyone on a day-to-day basis. We’re both here to improve the course. We do what the owner asks of us and what we feel needs to be done. It has worked out for the best. The question I get asked most often about shared responsibility is, “what happens if you disagree?” Well it doesn’t happen that often, but when it does we discuss it and give the reasons for our differing opinions. Sometimes we get backing from literature or other peers to arrive at a decision. It’s a relationship that’s a lot like a good marriage: a lot of communication and a lot of give and take. After it’s said and done, we each back the decision and go on to the next task at hand.”

Both plan on staying with Rich Harvest for a long time. There are a lot of great upcoming events scheduled, and the “Farm” hopes for more in the future. Both enjoy the high-end, great conditions that they are able to produce daily. The owner, Jerry Rich, has never turned them down when they wanted for the course. He has created great working conditions.

The MAGCS members look forward to the January meeting at Rich Harvest Farms.

